



Pronghorn 44-41-7HNB

MD
5":100'

Company: Bonanza Creek
Well Name: Pronghorn 44-41-7HNB
UWI or LSD: 05-123-36386
Rig Id: Ensign 128
State: Colorado
County/Parish: Weld
Country: USA
Survey Company: Ensign Directional
Job number: 128-334
Company Rep 1: Kenny Graham
Directional 1: Daniel Barton
Directional 2: Chris Saykally
MWD Operator 1: Wade Eldridge
MWD Operator 2: Arin Hatfield

Log measurements: Gamma
Depth measured from: 5500
Maximum temperature: 206.6

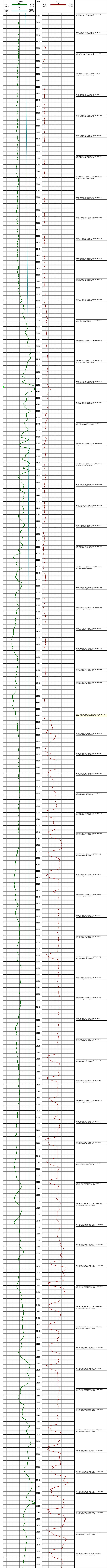
Depth **Date**
Start: 6560 ft 01/24/2013
End: 10610 ft 01/29/2013

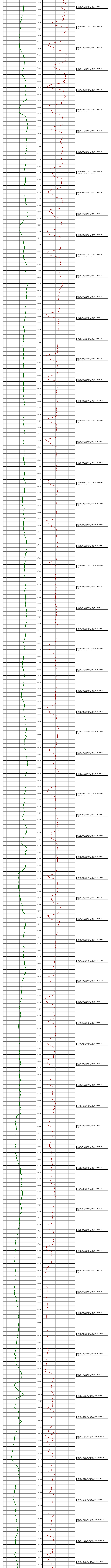
Casing **Depth** **Size**
Surface: 432 9 5/8
Intermediate: 6553 7

Mud Type:
Density:
Viscosity:
Rm: **Rmf:** **Rmc:**

Elevations
KB: 4577
GL: 4562
DF: 4577

Run	Bit Size	Offsets		Depths		Dates	
		Gamma	Survey	Start	End	Start	End
1	12.25	0.00	0.00	0	443	01/19/2013	01/19/2013
2	8.75	0.00	0.00	443	5522	01/20/2013	01/21/2013
3	8.75	36.68	48.09	5522	6560	01/21/2013	01/23/2013
4	6.125	39.50	50.92	6560	10610	01/24/2013	01/29/2013
5							
6							
7							
8							
9							
10							





10280
10290
10300
10310
10320
10330
10340
10350
10360
10370
10380
10390
10400
10410
10420
10430
10440
10450
10460
10470
10480
10490
10500
10510
10520
10530
10540
10550
10560
10570
10580
10590
10600
10610

#197 MD(10299.00) Inc(90.6) Azm(359.6) TVD(6065.75)
VS(4053.68) NS(4021.85) EW(508.19)

#198 MD(10330.00) Inc(89.9) Azm(359.6) TVD(6065.62)
VS(4084.44) NS(4052.85) EW(507.97)

#199 MD(10362.00) Inc(90.0) Azm(359.4) TVD(6065.65)
VS(4116.19) NS(4084.85) EW(507.69)

#200 MD(10394.00) Inc(90.2) Azm(359.4) TVD(6065.59)
VS(4147.93) NS(4116.85) EW(507.36)

#201 MD(10426.00) Inc(90.9) Azm(359.2) TVD(6065.28)
VS(4179.66) NS(4148.84) EW(506.97)

#202 MD(10457.00) Inc(91.5) Azm(0.3) TVD(6064.64)
VS(4210.43) NS(4179.84) EW(506.83)

#203 MD(10489.00) Inc(90.4) Azm(358.7) TVD(6064.10)
VS(4242.17) NS(4211.83) EW(506.55)

#204 MD(10521.00) Inc(90.0) Azm(359.2) TVD(6063.99)
VS(4273.87) NS(4243.82) EW(505.97)

#205 MD(10552.00) Inc(90.6) Azm(359.2) TVD(6063.83)
VS(4304.61) NS(4274.82) EW(505.53)

10610.0:Final Survey Projection to Bit: Inc: (90.6)
Azm: (359.2) TVD: (6063.83) VS: (4304.61)

