



Scale: 2" / 100'
Measured Depth Log

Well Name Falcon Seaboard 11-90-12 #3

Location 1,847' FSL, 1,848' FWL, SEC. 12, T11S, R90W

State COLORADO

Country USA

County GUNNISON

Rig Number AZTEC 777

API Number 05-051-06045

AFE # 59050001

Spud Date

6/23/2015

Drilling Completed 8/9/2013

Field BULL MOUNTAIN - #7819

Surface Coordinates LAT: 39.11241°N

LONG: 107.39938° W NAD 83

Ground Elevation 7,531'

K.B. Elevation 7,549'

Logged Interval 8,000

To 11,898

Total Depth 11,898

Formation S CANYON GROUP, CAMEO COALS, ROLLINS, COZZETTE, CORCORAN, DAKOTA, MANCOS
Type of Drilling Fluid GEL / POLYMER

Open

Company SG INTERESTS

Address 100 Waugh Drive # 400
Houston, TX 77007
Phone: (713) 951-0100

Geo

Name MIKE NEVILLE, JOSEPH LAFOR
Company FIELD GEO SERVICES, INC.

Address 533 BOGART LN., UNIT A
GRAND JUNCTION, CO 81505
(970) 424-5162 OFFICE

Zone Co

Oil
Note
Error

Condensate
Core
Water

Rock

	QUARTZ		SIDERITE or LIMONITE
	CALCITE		ARG LIMESTONE
	Illite		LIMESTONE
	Celadonite		DOLOMITE
	UNKNOWN		CHELT
	ANHYDRITE		COAL
	GYPSUM		MARLSTONE
	SALT		CLAYSTONE

erator

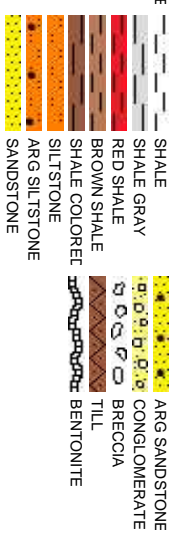
logist

RTUNE

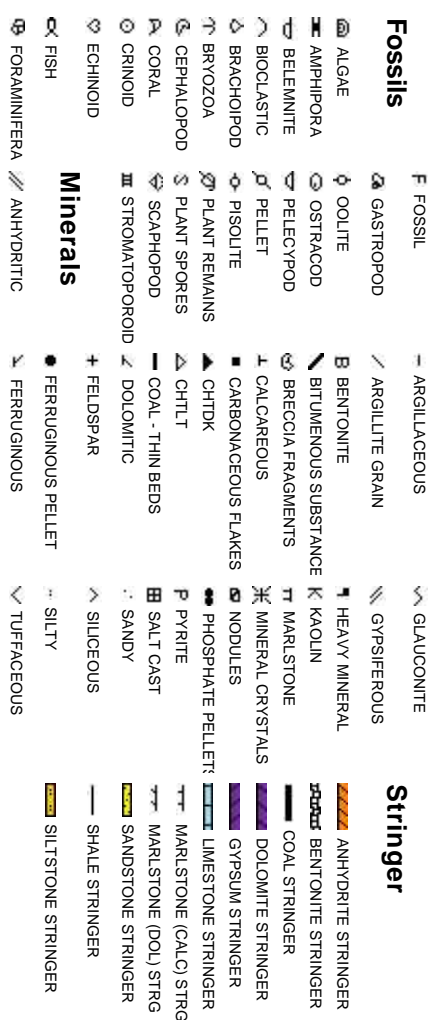
for Coding



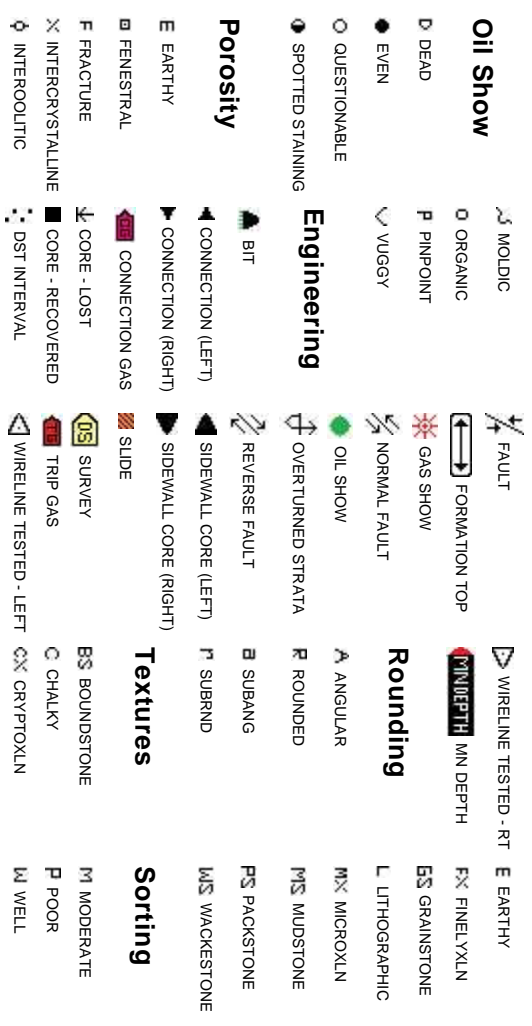
Types

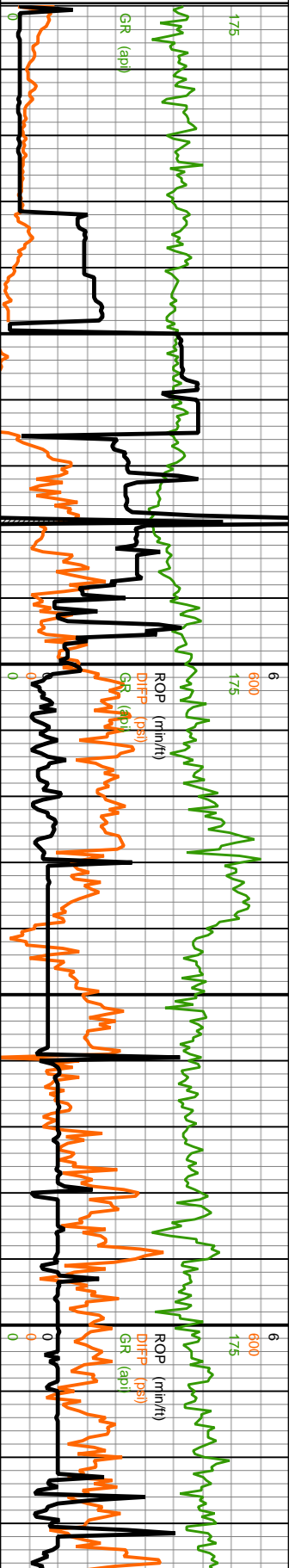


Accessories



Other Symbols

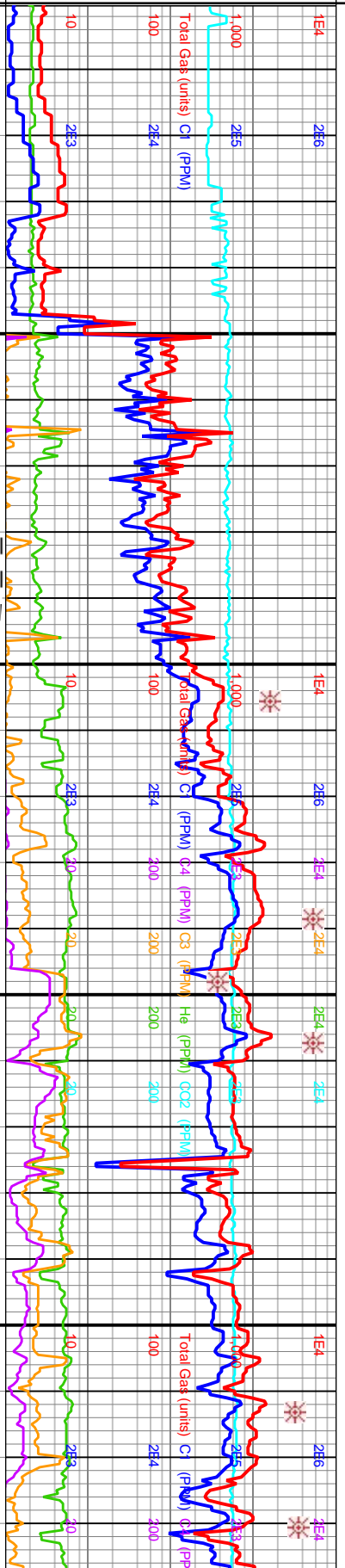




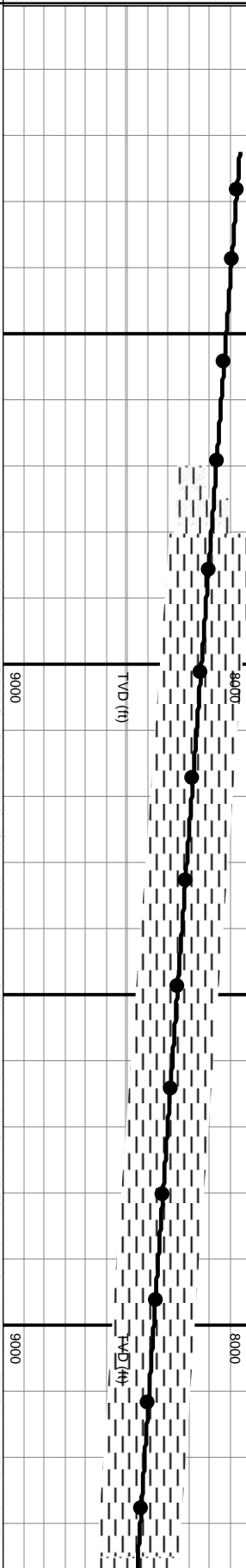
Slide
 Depth (ft) 8,0208, 0408, 0600, 0808, 1008, 1200, 1408, 1608, 1808, 2008, 2208, 2408, 2608, 2808, 3008, 3208, 3408, 3608, 3808, 4008, 4208, 4408, 460

Lag Depth: 8.070
 Min.: 41.56
 Strokes: 6.473

Well Notes



Well Bore
 TVD

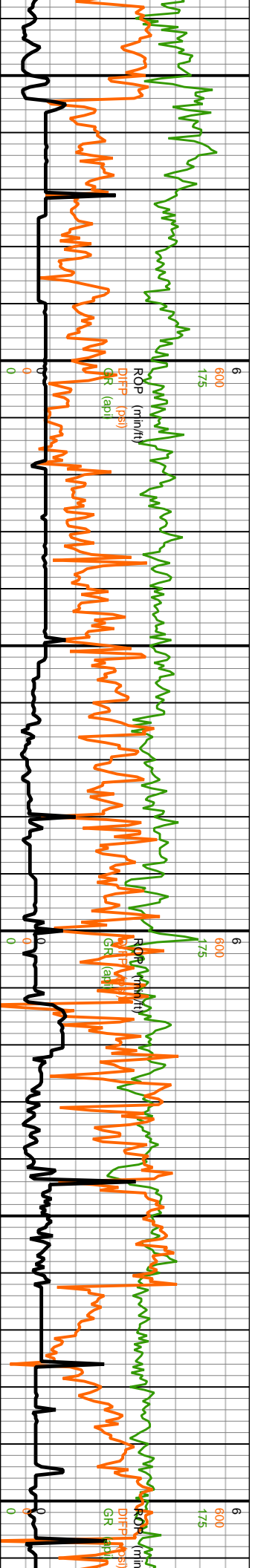


% Mineralogy



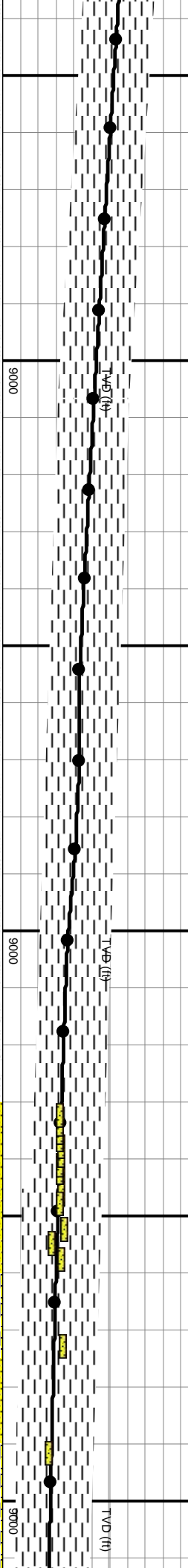
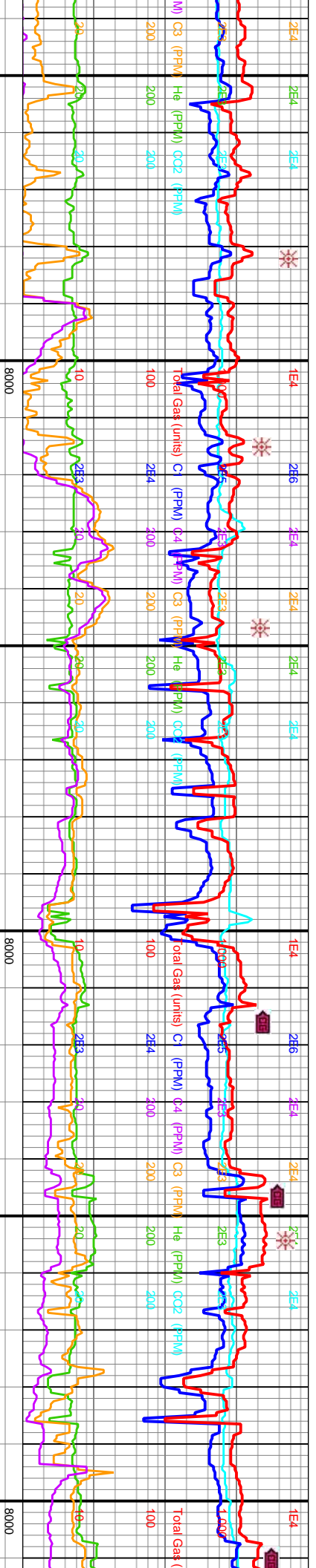
Lithology Descriptions

8140-8170: SH: meddkGy, sb
 blk/y, f - med xt, sily ip, frm to
 hd, calc, occ mmica, tr free pyr,
 no por, no o floor, no cut, no mg.
 Decr cement cont with depth.

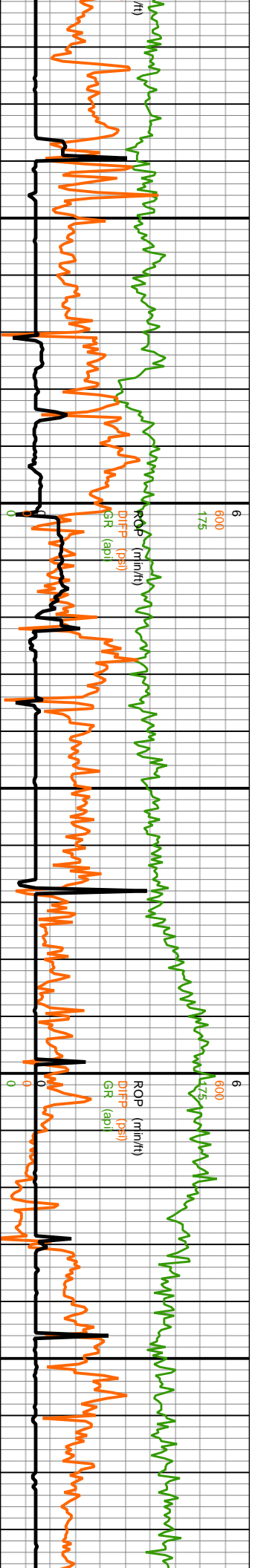


Lag Depth: 8.520
 Min: 36.57
 Strokes: 5.818

MINDEPTH



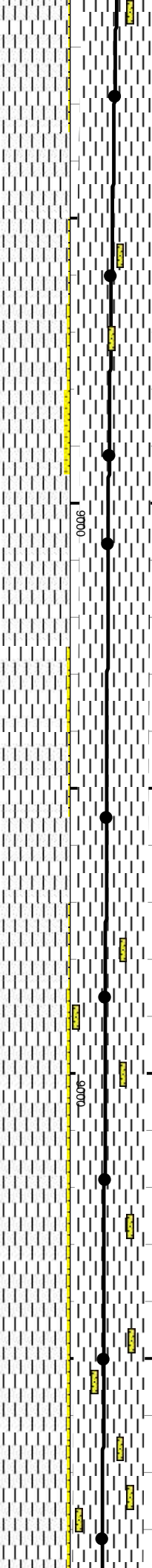
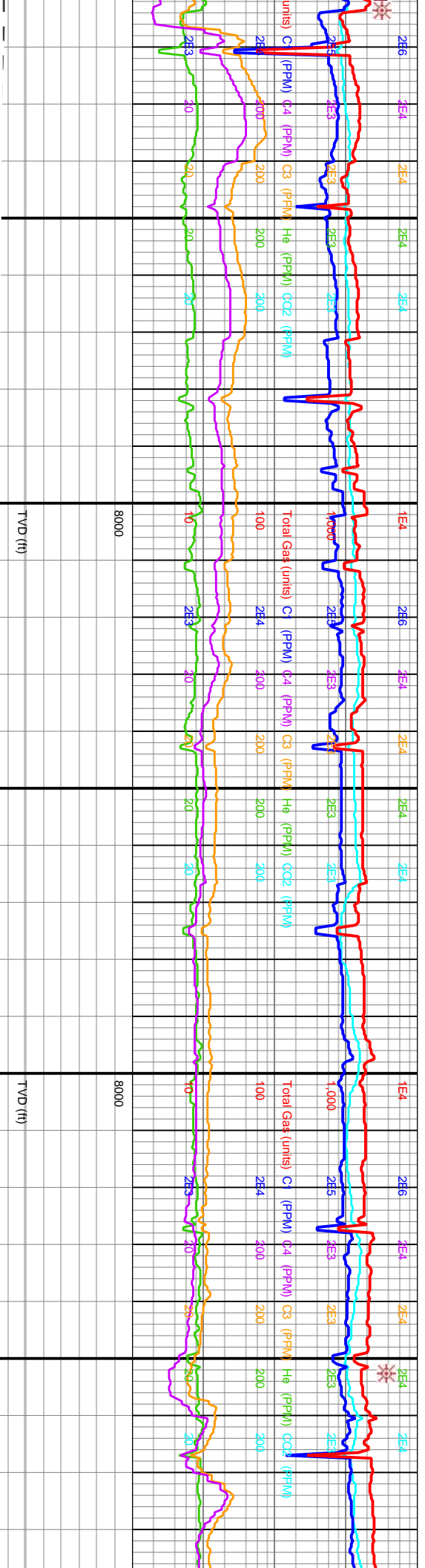
Lag D
 Min:
 Stroke

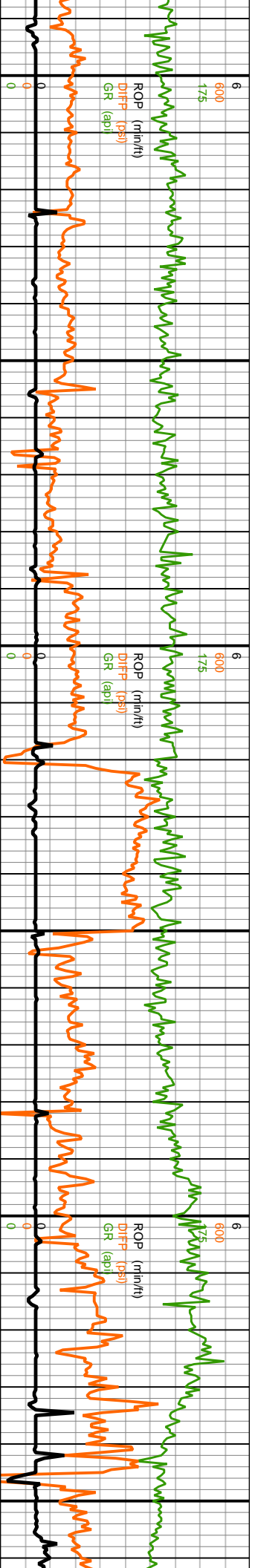


2209, 0409, 0609, 0809, 1009, 1209, 1409, 1609, 1809, 2009, 2209, 2409, 2609, 2809, 3009, 3209, 3409, 3609, 3809, 4009, 4209, 4409, 4609, 4809, 5009, 5209, 5409, 560

epth: 9.020
Min: 38.9'
Strokes: 7.186

Lag Depth: 9.520
Min: 40.12'
Strokes: 7.586

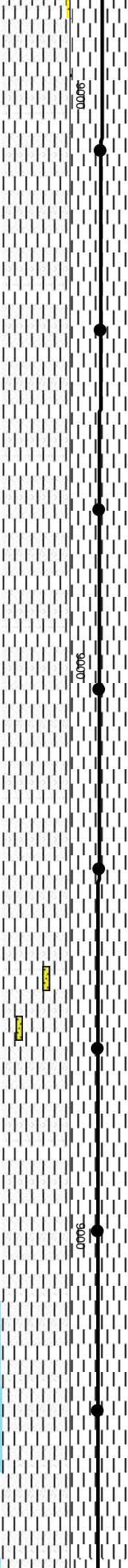
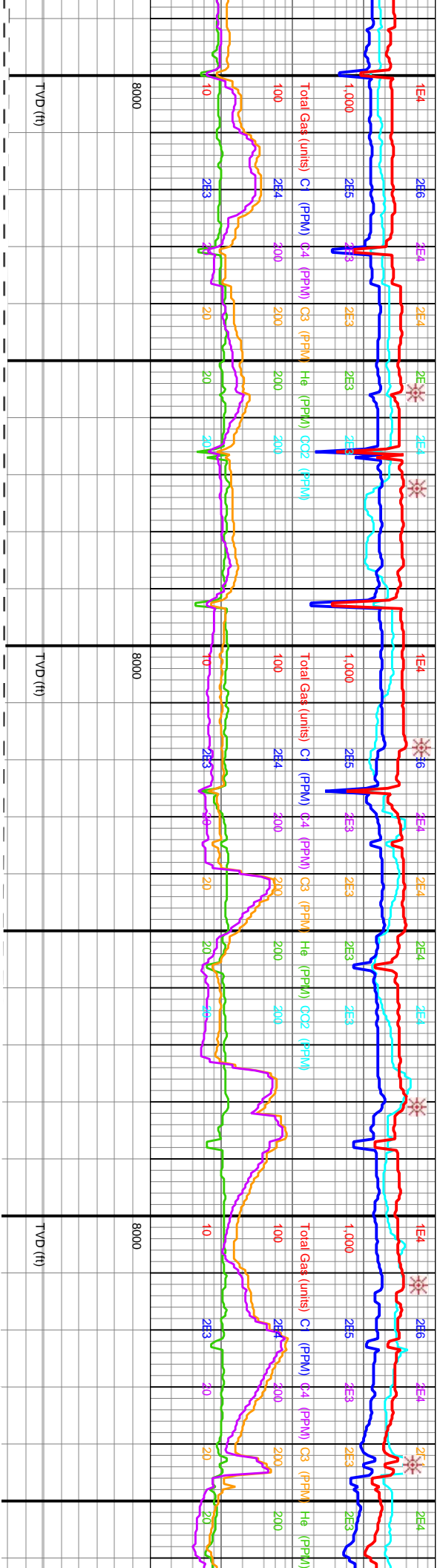


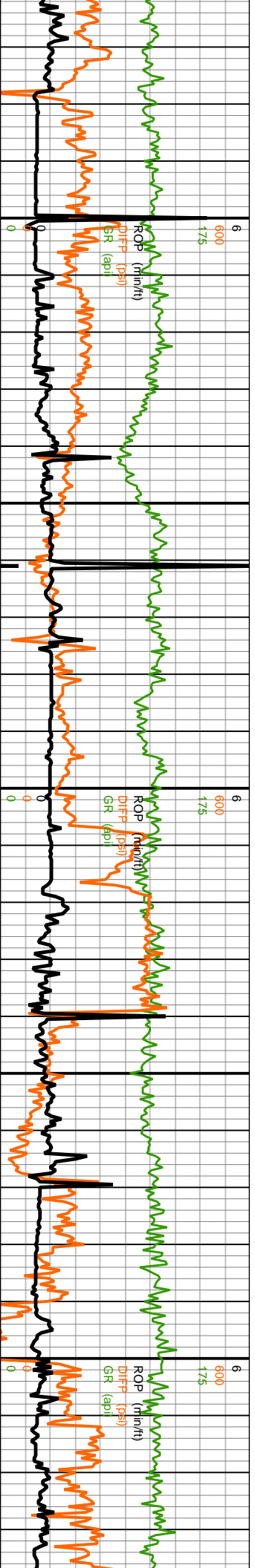


5,809, 6009, 6209, 6409, 6609, 6809, 7009, 7209, 7409, 7609, 7809, 8009, 8209, 8409, 8609, 8809, 9009, 9209, 9409, 9609, 9800, 0000, 0200, 0400, 0600, 0800, 1000, 1

MINDEPTH

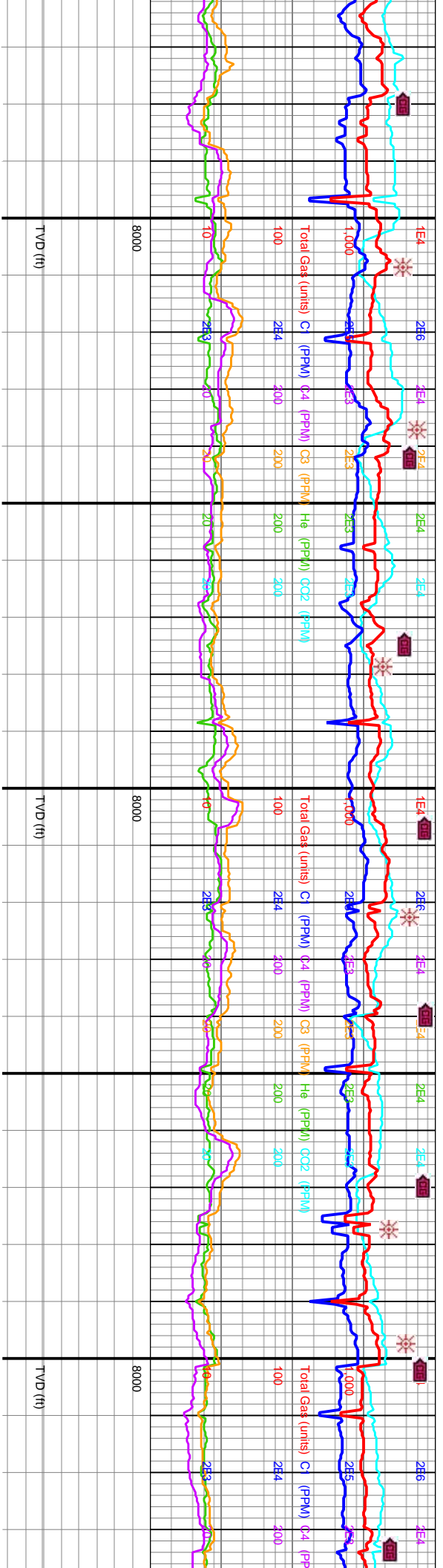
Lag Depth: 10.020
Min.: 41.9
Strokes: 7.969



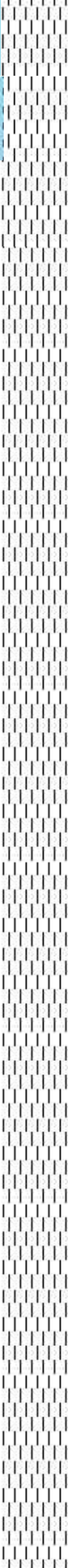


200, 1400, 1600, 1800, 2000, 2200, 2400, 2600, 2800, 3000, 3200, 3400, 3600, 3800, 4000, 4200, 4400, 4600, 4800, 5000, 5200, 5400, 5600, 5800, 6000, 6200, 6400, 6500

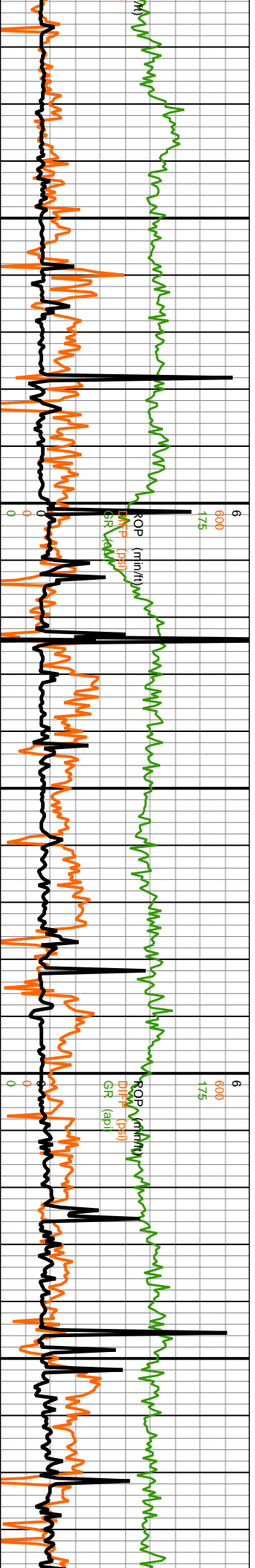
Lag Depth: 10' MINDEPTH
 Min.: 43.6'
 Strokes: 8.353



200, 1400, 1600, 1800, 2000, 2200, 2400, 2600, 2800, 3000, 3200, 3400, 3600, 3800, 4000, 4200, 4400, 4600, 4800, 5000, 5200, 5400, 5600, 5800, 6000, 6200, 6400, 6500



200, 1400, 1600, 1800, 2000, 2200, 2400, 2600, 2800, 3000, 3200, 3400, 3600, 3800, 4000, 4200, 4400, 4600, 4800, 5000, 5200, 5400, 5600, 5800, 6000, 6200, 6400, 6500



201, 2401, 2601, 2801, 3001, 3201, 3401, 3601, 3801, 4001, 4201, 4401, 4601, 4801, 5001, 5201, 5401, 5601, 5801, 6001, 6201, 6401, 6601, 6801, 7001, 7201, 7401, 760

MINIDEPTH

