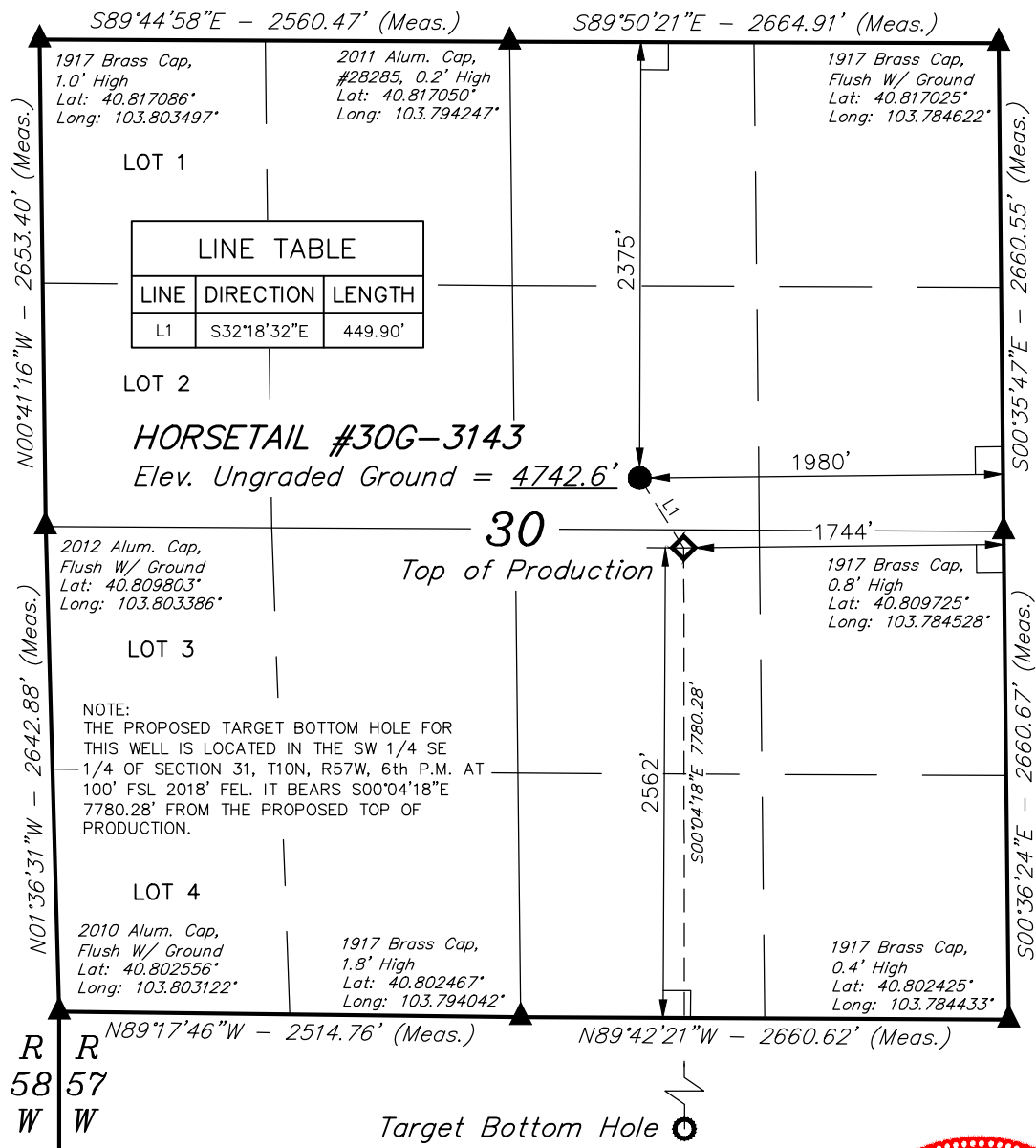


LEGEND:

- = 90° SYMBOL
- = PROPOSED WELLHEAD.
- = TARGET BOTTOM HOLE.
- = TOP OF PRODUCTION
- = SECTION CORNERS LOCATED.

T10N, R57W, 6th P.M.



PDOP = 1.7



NAD 83 (TOP OF PRODUCTION)	NAD 83 (SURFACE LOCATION)
LATITUDE = 40°48'34.14" (40.809483)	LATITUDE = 40°48'37.90" (40.810528)
LONGITUDE = 103°47'26.97" (103.790825)	LONGITUDE = 103°47'30.09" (103.791692)
NAD 27 (TOP OF PRODUCTION)	NAD 27 (SURFACE LOCATION)
LATITUDE = 40°48'34.19" (40.809497)	LATITUDE = 40°48'37.95" (40.810542)
LONGITUDE = 103°47'25.16" (103.790322)	LONGITUDE = 103°47'28.28" (103.791189)

BASIS OF BEARINGS
BASIS OF BEARINGS IS A G.P.S. OBSERVATION
BASIS OF ELEVATION

SPOT ELEVATION LOCATED AT THE NORTHEAST CORNER OF SECTION 15, T9N, R58W, 6th P.M. TAKEN FROM THE GATEHOOK SPRING, QUADRANGLE, COLORADO, WELD COUNTY, 7.5 MINUTE QUAD (TOPOGRAPHIC MAP) PUBLISHED BY THE UNITED STATES DEPARTMENT OF THE INTERIOR, GEOLOGICAL SURVEY. SAID ELEVATION IS MARKED AS BEING 4679 FEET.



UELS, LLC
Corporate Office * 85 South 200 East
Vernal, UT 84078 * (435) 789-1017



CERTIFICATE
THIS IS TO CERTIFY THAT THE ABOVE PLAT WAS PREPARED FROM FIELD NOTES OF ACTUAL SURVEYS MADE BY ME OR UNDER MY SUPERVISION AND THAT THE SAME ARE TRUE AND CORRECT TO THE BEST OF MY KNOWLEDGE AND BELIEF.

REGISTERED LAND SURVEYOR
REGISTRATION NO. 28285
STATE OF COLORADO

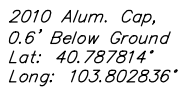
WHITING OIL & GAS CORP.

HORSETAIL #30G-3143 (SURFACE LOCATION)
SW 1/4 NE 1/4, SECTION 30, T10N, R57W, 6th P.M.
WELD COUNTY, COLORADO

SURVEYED BY: JARED CHRISTOPHER, D.W.	DATE: 04-24-15
DRAWN BY: H.K.W.	DATE DRAWN: 02-12-14
SCALE: 1" = 1000'	REVISED: 11-24-15 M.F.D.
WELL LOCATION PLAT	

T10N, R57W, 6th P.M.

- ◆ *Top of Production*



A horizontal scale bar with alternating black and white segments. Above the bar, the markings are 1000', 500', 0', 500', and 1000' from left to right.

SURVEYED BY: JARED CHRISTOPHER, D.W.		DATE: 04-24-15
DRAWN BY: H.K.W.		DATE DRAWN: 02-12-14
SCALE: 1" = 1000'		REVISED: 11-24-15 M.F.D.

WELL LOCATION PLAT



UELS, LLC
Corporate Office * 85 South 200 East
Vernal, UT 84078 * (435) 789-1017