

Noble Energy Inc.- Weld County, CO (Grid North)

Well Name: **70 Ranch State BB18-655**

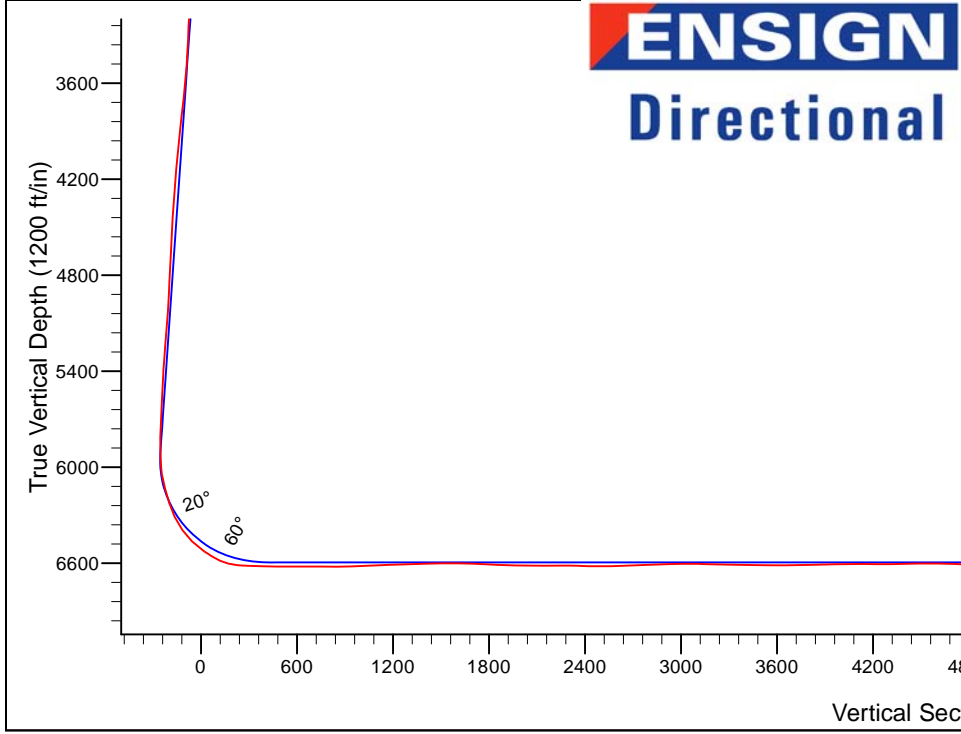
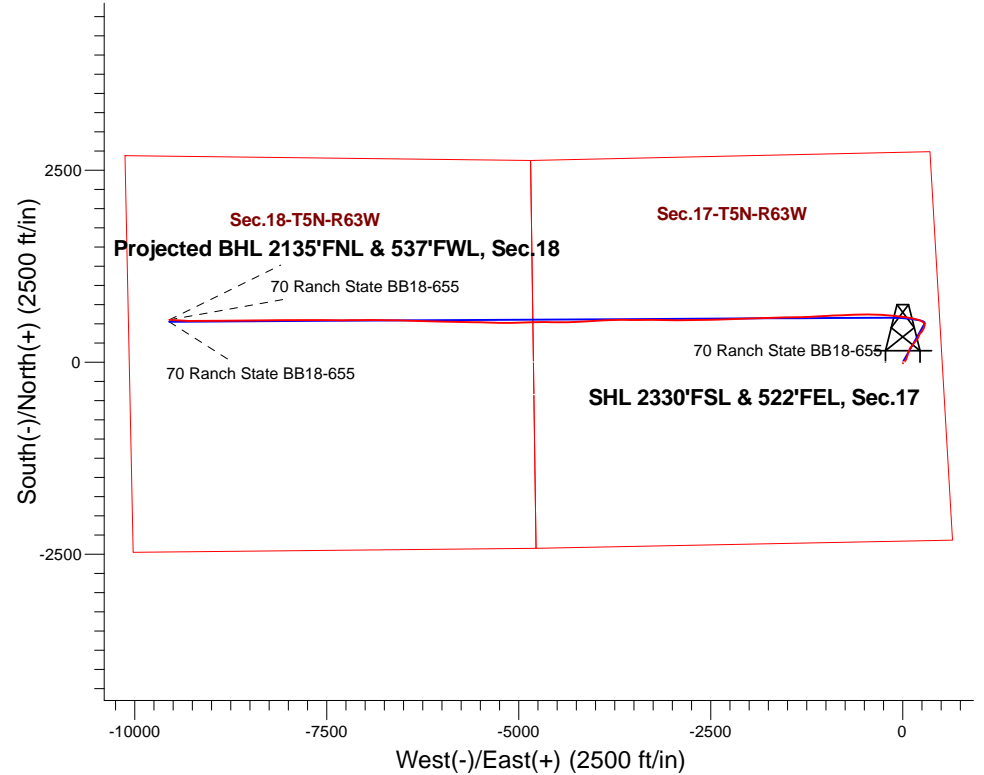
Surface Location: 70 Ranch State BB18 Pad Sec.17-T5N-R63W
 North American Datum 1983 , US State Plane 1983, Colorado Northern Zone
 Ground Elevation: 4668.0

+N/-S	+E/-W	Northing	Easting	Latitude	Longitude	Slot
0.0	0.0	1389713.87	3291625.34	40.398440	-104.452910	

 H&P 326 RKB - 30' WELL @ 4698.0ft (H&P 326 RKB - 30')

FINAL SURVEY

API #05-123-41534
 Projected Bottom Hole Location
 16252'MD 6612'TVD 552'N & 9550'W of SHL
 90.3 degree Incl @ 274 degree AZM

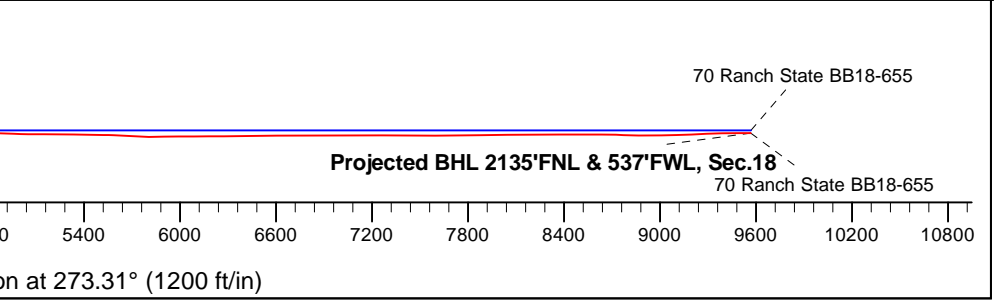


70 Ranch State BB18 Pad Sec.17-T5N-R63W
 70 Ranch State BB18-655
 Wellbore #1
 13:04, August 26 2015

ANNOTATIONS
 No annotation data is available.

LEGEND

- 70 Ranch State BB18-655, Wellbore #1, Plan A - Rev 0 V0
- Wellbore #1





Noble Energy Inc.- Weld County, CO (Grid North)

Sec.17-T5N-R63W

70 Ranch State BB18 Pad Sec.17-T5N-R63W

70 Ranch State BB18-655

Wellbore #1

Design: Wellbore #1

Standard Survey Report

26 August, 2015

Company:	Noble Energy Inc.- Weld County, CO (Grid North)	Local Co-ordinate Reference:	Well 70 Ranch State BB18-655
Project:	Sec.17-T5N-R63W	TVD Reference:	WELL @ 4698.0ft (H&P 326 RKB - 30')
Site:	70 Ranch State BB18 Pad Sec.17-T5N-R63W	MD Reference:	WELL @ 4698.0ft (H&P 326 RKB - 30')
Well:	70 Ranch State BB18-655	North Reference:	Grid
Wellbore:	Wellbore #1	Survey Calculation Method:	Minimum Curvature
Design:	Wellbore #1	Database:	US_EDM

Project	Sec.17-T5N-R63W, Weld County, CO		
Map System:	US State Plane 1983	System Datum:	Mean Sea Level
Geo Datum:	North American Datum 1983		Using Well Reference Point
Map Zone:	Colorado Northern Zone		Using geodetic scale factor

Site	70 Ranch State BB18 Pad Sec.17-T5N-R63W				
Site Position:		Northing:	1,389,641.04 usft	Latitude:	40.398240
From:	Lat/Long	Easting:	3,291,626.21 usft	Longitude:	-104.452910
Position Uncertainty:	0.0 ft	Slot Radius:	13-3/16 "	Grid Convergence:	0.68 °

Well	70 Ranch State BB18-655					
Well Position	+N/-S	0.0 ft	Northing:	1,389,713.87 usft	Latitude:	40.398440
	+E/-W	0.0 ft	Easting:	3,291,625.35 usft	Longitude:	-104.452910
Position Uncertainty		0.0 ft	Wellhead Elevation:	ft	Ground Level:	4,668.0 ft

Wellbore	Wellbore #1				
Magnetics	Model Name	Sample Date	Declination (°)	Dip Angle (°)	Field Strength (nT)
	HDGM	8/12/2015	8.23	67.03	52,500

Design	Wellbore #1				
Audit Notes:					
Version:	1.0	Phase:	ACTUAL	Tie On Depth:	0.0
Vertical Section:	Depth From (TVD) (ft)	+N/-S (ft)	+E/-W (ft)	Direction (°)	
	0.0	0.0	0.0		273.31

Survey Program	Date	8/26/2015			
From (ft)	To (ft)	Survey (Wellbore)	Tool Name	Description	
819.0	6,860.0	Curve/Intermediate (Wellbore #1)	MWD	MWD - Standard	
6,945.0	16,252.0	Lateral (Wellbore #1)	MWD+IFR1+MS_WY	Fixed:v2:Rockies, crustal dec + 3-axis correction	

Survey										
Measured Depth (ft)	Inclination (°)	Azimuth (°)	Vertical Depth (ft)	+N/-S (ft)	+E/-W (ft)	Vertical Section (ft)	Dogleg Rate (°/100usft)	Build Rate (°/100usft)	Turn Rate (°/100usft)	
0.0	0.00	0.00	0.0	0.0	0.0	0.0	0.00	0.00	0.00	
819.0	1.41	164.25	818.9	-9.7	2.7	-3.3	0.17	0.17	0.00	
912.0	1.41	166.53	911.9	-11.9	3.3	-4.0	0.06	0.00	2.45	
1,003.0	1.41	163.72	1,002.9	-14.1	3.9	-4.7	0.08	0.00	-3.09	
1,097.0	1.10	71.26	1,096.8	-14.9	5.1	-5.9	1.94	-0.33	-98.36	
1,282.0	0.84	35.14	1,281.8	-13.2	7.5	-8.3	0.35	-0.14	-19.52	
1,375.0	0.92	41.20	1,374.8	-12.1	8.4	-9.1	0.13	0.09	6.52	
1,468.0	0.92	65.28	1,467.8	-11.2	9.6	-10.2	0.41	0.00	25.89	
1,562.0	1.05	79.00	1,561.8	-10.7	11.1	-11.7	0.29	0.14	14.60	

Company:	Noble Energy Inc.- Weld County, CO (Grid North)	Local Co-ordinate Reference:	Well 70 Ranch State BB18-655
Project:	Sec.17-T5N-R63W	TVD Reference:	WELL @ 4698.0ft (H&P 326 RKB - 30')
Site:	70 Ranch State BB18 Pad Sec.17-T5N-R63W	MD Reference:	WELL @ 4698.0ft (H&P 326 RKB - 30')
Well:	70 Ranch State BB18-655	North Reference:	Grid
Wellbore:	Wellbore #1	Survey Calculation Method:	Minimum Curvature
Design:	Wellbore #1	Database:	US_EDM

Survey										
Measured Depth (ft)	Inclination (°)	Azimuth (°)	Vertical Depth (ft)	+N/-S (ft)	+E/-W (ft)	Vertical Section (ft)	Dogleg Rate (°/100usft)	Build Rate (°/100usft)	Turn Rate (°/100usft)	
1,655.0	1.14	62.82	1,654.8	-10.2	12.8	-13.3	0.34	0.10	-17.40	
1,748.0	1.54	40.41	1,747.7	-8.8	14.4	-14.9	0.70	0.43	-24.10	
1,840.0	1.98	32.41	1,839.7	-6.5	16.1	-16.4	0.55	0.48	-8.70	
1,932.0	1.93	28.90	1,931.6	-3.8	17.7	-17.8	0.14	-0.05	-3.82	
2,025.0	1.41	30.92	2,024.6	-1.5	19.0	-19.1	0.56	-0.56	2.17	
2,215.0	5.85	30.92	2,214.2	8.9	25.2	-24.6	2.34	2.34	0.00	
2,309.0	6.95	35.04	2,307.6	17.6	30.9	-29.8	1.27	1.17	4.38	
2,403.0	8.70	33.60	2,400.7	28.2	38.1	-36.4	1.87	1.86	-1.53	
2,498.0	10.24	20.90	2,494.4	42.1	45.1	-42.6	2.72	1.62	-13.37	
2,593.0	10.24	21.08	2,587.9	57.9	51.2	-47.7	0.03	0.00	0.19	
2,782.0	10.11	18.79	2,773.9	89.2	62.5	-57.3	0.22	-0.07	-1.21	
2,877.0	10.29	17.82	2,867.4	105.2	67.8	-61.6	0.26	0.19	-1.02	
2,972.0	9.93	17.38	2,961.0	121.1	72.9	-65.8	0.39	-0.38	-0.46	
3,066.0	9.63	15.89	3,053.6	136.4	77.4	-69.4	0.42	-0.32	-1.59	
3,161.0	8.75	21.78	3,147.4	150.8	82.3	-73.5	1.35	-0.93	6.20	
3,255.0	8.31	21.95	3,240.3	163.7	87.5	-77.9	0.47	-0.47	0.18	
3,350.0	7.56	24.15	3,334.4	175.8	92.6	-82.3	0.85	-0.79	2.32	
3,444.0	6.46	33.91	3,427.7	185.8	98.1	-87.2	1.72	-1.17	10.38	
3,538.0	7.21	36.81	3,521.1	194.9	104.6	-93.2	0.88	0.80	3.09	
3,633.0	9.49	39.53	3,615.0	205.7	113.1	-101.1	2.44	2.40	2.86	
3,728.0	10.59	39.44	3,708.6	218.5	123.7	-110.8	1.16	1.16	-0.09	
3,822.0	10.68	38.65	3,801.0	232.0	134.6	-121.0	0.18	0.10	-0.84	
3,917.0	10.46	38.30	3,894.4	245.6	145.4	-131.0	0.24	-0.23	-0.37	
4,010.0	9.58	38.04	3,985.9	258.3	155.4	-140.3	0.95	-0.95	-0.28	
4,104.0	8.66	38.65	4,078.8	270.0	164.7	-148.8	0.98	-0.98	0.65	
4,198.0	8.92	41.03	4,171.7	281.0	173.9	-157.4	0.48	0.28	2.53	
4,292.0	7.82	39.62	4,264.6	291.5	182.7	-165.6	1.19	-1.17	-1.50	
4,387.0	8.09	31.09	4,358.7	302.2	190.3	-172.6	1.27	0.28	-8.98	
4,481.0	7.82	28.02	4,451.8	313.5	196.7	-178.3	0.54	-0.29	-3.27	
4,575.0	6.90	25.91	4,545.1	324.2	202.2	-183.2	1.02	-0.98	-2.24	
4,670.0	8.00	25.21	4,639.3	335.3	207.5	-187.8	1.16	1.16	-0.74	
4,765.0	7.78	23.45	4,733.4	347.2	212.9	-192.5	0.34	-0.23	-1.85	
4,859.0	7.12	21.34	4,826.6	358.5	217.5	-196.5	0.76	-0.70	-2.24	
4,954.0	7.82	32.41	4,920.8	369.4	223.1	-201.5	1.68	0.74	11.65	
5,049.0	6.11	34.17	5,015.1	379.0	229.4	-207.2	1.81	-1.80	1.85	
5,143.0	6.20	50.17	5,108.5	386.4	236.2	-213.5	1.82	0.10	17.02	
5,238.0	7.60	43.40	5,202.8	394.3	244.4	-221.3	1.70	1.47	-7.13	
5,332.0	8.70	32.06	5,295.9	404.8	252.5	-228.7	2.07	1.17	-12.06	
5,427.0	6.73	31.97	5,390.0	415.6	259.2	-234.8	2.07	-2.07	-0.09	
5,521.0	8.97	24.85	5,483.1	427.0	265.2	-240.1	2.59	2.38	-7.57	
5,616.0	7.34	22.75	5,577.2	439.3	270.7	-244.9	1.74	-1.72	-2.21	
5,710.0	8.18	18.79	5,670.3	451.2	275.2	-248.7	1.06	0.89	-4.21	

Company:	Noble Energy Inc.- Weld County, CO (Grid North)	Local Co-ordinate Reference:	Well 70 Ranch State BB18-655
Project:	Sec.17-T5N-R63W	TVD Reference:	WELL @ 4698.0ft (H&P 326 RKB - 30')
Site:	70 Ranch State BB18 Pad Sec.17-T5N-R63W	MD Reference:	WELL @ 4698.0ft (H&P 326 RKB - 30')
Well:	70 Ranch State BB18-655	North Reference:	Grid
Wellbore:	Wellbore #1	Survey Calculation Method:	Minimum Curvature
Design:	Wellbore #1	Database:	US_EDM

Survey									
Measured Depth (ft)	Inclination (°)	Azimuth (°)	Vertical Depth (ft)	+N/-S (ft)	+E/-W (ft)	Vertical Section (ft)	Dogleg Rate (°/100usft)	Build Rate (°/100usft)	Turn Rate (°/100usft)
5,804.0	8.31	21.43	5,763.3	463.8	279.8	-252.6	0.43	0.14	2.81
5,899.0	7.60	13.69	5,857.4	476.3	283.8	-255.8	1.35	-0.75	-8.15
5,993.0	10.46	349.52	5,950.3	490.7	283.7	-254.9	4.99	3.04	-25.71
6,088.0	14.55	322.10	6,043.1	508.7	274.8	-245.0	7.48	4.31	-28.86
6,182.0	18.07	308.13	6,133.3	527.0	256.1	-225.2	5.58	3.74	-14.86
6,277.0	17.80	292.39	6,223.8	541.6	231.0	-199.4	5.10	-0.28	-16.57
6,371.0	25.41	283.08	6,311.1	551.7	198.0	-165.9	8.86	8.10	-9.90
6,466.0	35.91	284.31	6,392.7	563.2	151.1	-118.3	11.07	11.05	1.29
6,561.0	46.37	282.11	6,464.2	577.4	90.3	-56.8	11.11	11.01	-2.32
6,655.0	54.99	275.78	6,523.7	588.4	18.5	15.4	10.54	9.17	-6.73
6,750.0	61.41	276.84	6,573.8	597.3	-61.7	96.0	6.82	6.76	1.12
6,797.0	69.80	274.73	6,593.2	601.6	-104.2	138.7	18.31	17.85	-4.49
6,860.0	81.36	273.93	6,608.8	606.2	-165.0	199.6	18.39	18.35	-1.27
6,945.0	88.36	274.51	6,616.4	612.4	-249.3	284.2	8.26	8.24	0.68
7,039.0	88.31	272.70	6,619.2	618.3	-343.1	378.2	1.93	-0.05	-1.93
7,078.0	88.67	271.76	6,620.2	619.8	-382.0	417.1	2.59	0.93	-2.42
70 Ranch State BB18-655 Landing Pt.									
7,134.0	89.19	270.40	6,621.2	620.9	-438.0	473.1	2.59	0.93	-2.42
7,228.0	89.99	268.29	6,621.9	619.8	-532.0	566.9	2.40	0.85	-2.24
7,322.0	90.56	268.49	6,621.5	617.2	-626.0	660.5	0.64	0.61	0.21
7,417.0	88.80	267.52	6,622.0	613.8	-720.9	755.1	2.12	-1.85	-1.02
7,512.0	90.53	267.34	6,622.5	609.6	-815.8	849.6	1.83	1.82	-0.19
7,606.0	91.75	267.14	6,620.7	605.1	-909.7	943.1	1.32	1.30	-0.21
7,700.0	92.07	267.19	6,617.5	600.4	-1,003.5	1,036.5	0.34	0.34	0.05
7,794.0	92.95	267.06	6,613.4	595.7	-1,097.3	1,129.9	0.95	0.94	-0.14
7,889.0	92.31	267.40	6,609.1	591.1	-1,192.1	1,224.2	0.76	-0.67	0.36
7,984.0	91.42	268.05	6,606.0	587.3	-1,287.0	1,318.7	1.16	-0.94	0.68
8,078.0	91.58	267.50	6,603.5	583.7	-1,380.9	1,412.2	0.61	0.17	-0.59
8,172.0	91.45	269.00	6,601.0	580.8	-1,474.8	1,505.8	1.60	-0.14	1.60
8,267.0	88.44	269.17	6,601.1	579.3	-1,569.8	1,600.6	3.17	-3.17	0.18
8,361.0	88.10	269.19	6,604.0	578.0	-1,663.7	1,694.3	0.36	-0.36	0.02
8,455.0	87.25	269.27	6,607.8	576.7	-1,757.6	1,788.0	0.91	-0.90	0.09
8,550.0	88.10	268.68	6,611.6	575.0	-1,852.5	1,882.6	1.09	0.89	-0.62
8,644.0	88.97	268.17	6,614.0	572.4	-1,946.5	1,976.2	1.07	0.93	-0.54
8,738.0	88.16	267.39	6,616.4	568.8	-2,040.4	2,069.8	1.20	-0.86	-0.83
8,833.0	91.11	267.63	6,617.0	564.7	-2,135.3	2,164.3	3.12	3.11	0.25
8,927.0	90.27	267.03	6,615.9	560.3	-2,229.1	2,257.8	1.10	-0.89	-0.64
9,021.0	88.76	266.71	6,616.6	555.1	-2,323.0	2,351.2	1.64	-1.61	-0.34
9,116.0	89.29	267.81	6,618.3	550.6	-2,417.9	2,445.6	1.29	0.56	1.16
9,210.0	89.31	268.64	6,619.4	547.7	-2,511.8	2,539.2	0.88	0.02	0.88
9,305.0	92.34	269.77	6,618.0	546.4	-2,606.8	2,634.0	3.40	3.19	1.19
9,494.0	93.10	270.33	6,609.1	546.5	-2,795.6	2,822.5	0.50	0.40	0.30
9,588.0	90.89	270.88	6,605.8	547.5	-2,889.5	2,916.3	2.42	-2.35	0.59

Company:	Noble Energy Inc.- Weld County, CO (Grid North)	Local Co-ordinate Reference:	Well 70 Ranch State BB18-655
Project:	Sec.17-T5N-R63W	TVD Reference:	WELL @ 4698.0ft (H&P 326 RKB - 30')
Site:	70 Ranch State BB18 Pad Sec.17-T5N-R63W	MD Reference:	WELL @ 4698.0ft (H&P 326 RKB - 30')
Well:	70 Ranch State BB18-655	North Reference:	Grid
Wellbore:	Wellbore #1	Survey Calculation Method:	Minimum Curvature
Design:	Wellbore #1	Database:	US_EDM

Survey									
Measured Depth (ft)	Inclination (°)	Azimuth (°)	Vertical Depth (ft)	+N/-S (ft)	+E/-W (ft)	Vertical Section (ft)	Dogleg Rate (°/100usft)	Build Rate (°/100usft)	Turn Rate (°/100usft)
9,683.0	90.14	270.66	6,604.9	548.8	-2,984.5	3,011.2	0.82	-0.79	-0.23
9,777.0	89.33	270.10	6,605.4	549.4	-3,078.5	3,105.1	1.05	-0.86	-0.60
9,869.0	88.07	270.60	6,607.5	550.0	-3,170.5	3,196.9	1.47	-1.37	0.54
9,961.0	89.42	269.92	6,609.5	550.4	-3,262.4	3,288.8	1.64	1.47	-0.74
10,148.0	89.21	269.59	6,611.7	549.6	-3,449.4	3,475.4	0.21	-0.11	-0.18
10,242.0	88.53	269.03	6,613.6	548.5	-3,543.4	3,569.1	0.94	-0.72	-0.60
10,429.0	92.21	270.45	6,612.4	547.6	-3,730.4	3,755.7	2.11	1.97	0.76
10,522.0	91.69	269.30	6,609.2	547.4	-3,823.3	3,848.5	1.36	-0.56	-1.24
10,616.0	90.64	267.13	6,607.3	544.5	-3,917.2	3,942.1	2.56	-1.12	-2.31
10,708.0	90.43	265.85	6,606.4	538.9	-4,009.0	4,033.5	1.41	-0.23	-1.39
10,893.0	89.62	265.88	6,606.4	525.5	-4,193.6	4,216.9	0.44	-0.44	0.02
10,986.0	90.93	268.03	6,605.9	520.6	-4,286.4	4,309.3	2.71	1.41	2.31
11,124.0	91.19	269.88	6,603.4	518.1	-4,424.4	4,446.9	1.35	0.19	1.34
11,265.0	89.19	271.01	6,602.9	519.2	-4,565.4	4,587.7	1.63	-1.42	0.80
11,358.0	88.79	270.36	6,604.5	520.3	-4,658.3	4,680.6	0.82	-0.43	-0.70
11,451.0	86.93	269.96	6,608.0	520.5	-4,751.3	4,773.4	2.05	-2.00	-0.43
11,544.0	87.07	268.21	6,612.9	519.1	-4,844.1	4,866.0	1.89	0.15	-1.88
11,637.0	87.98	267.60	6,616.9	515.7	-4,937.0	4,958.5	1.18	0.98	-0.66
11,729.0	89.34	268.71	6,619.0	512.7	-5,028.9	5,050.1	1.91	1.48	1.21
11,823.0	89.49	269.72	6,620.0	511.4	-5,122.9	5,143.9	1.09	0.16	1.07
11,917.0	89.47	270.27	6,620.8	511.4	-5,216.9	5,237.7	0.59	-0.02	0.59
12,012.0	89.92	271.44	6,621.4	512.8	-5,311.9	5,332.6	1.32	0.47	1.23
12,106.0	88.63	271.39	6,622.5	515.1	-5,405.8	5,426.5	1.37	-1.37	-0.05
12,200.0	89.60	271.59	6,624.0	517.6	-5,499.8	5,520.5	1.05	1.03	0.21
12,295.0	86.71	270.80	6,627.1	519.6	-5,594.7	5,615.4	3.15	-3.04	-0.83
12,390.0	86.80	270.99	6,632.4	521.0	-5,689.5	5,710.1	0.22	0.09	0.20
12,484.0	89.14	270.37	6,635.8	522.2	-5,783.5	5,804.0	2.58	2.49	-0.66
12,579.0	91.44	272.67	6,635.3	524.7	-5,878.4	5,898.9	3.42	2.42	2.42
12,673.0	89.81	272.41	6,634.3	528.8	-5,972.3	5,992.9	1.76	-1.73	-0.28
12,767.0	90.79	271.68	6,633.8	532.2	-6,066.3	6,086.9	1.30	1.04	-0.78
12,861.0	89.90	271.76	6,633.2	535.0	-6,160.2	6,180.8	0.95	-0.95	0.09
12,955.0	91.52	270.96	6,632.0	537.3	-6,254.2	6,274.8	1.92	1.72	-0.85
13,049.0	91.03	270.44	6,629.9	538.4	-6,348.1	6,368.6	0.76	-0.52	-0.55
13,144.0	90.11	270.47	6,629.0	539.2	-6,443.1	6,463.5	0.97	-0.97	0.03
13,239.0	90.38	271.55	6,628.6	540.8	-6,538.1	6,558.4	1.17	0.28	1.14
13,333.0	89.96	271.82	6,628.3	543.6	-6,632.1	6,652.4	0.53	-0.45	0.29
13,427.0	89.63	272.58	6,628.6	547.2	-6,726.0	6,746.4	0.88	-0.35	0.81
13,521.0	90.43	269.73	6,628.6	549.1	-6,820.0	6,840.3	3.15	0.85	-3.03
13,710.0	89.72	269.70	6,628.3	548.2	-7,009.0	7,028.9	0.38	-0.38	-0.02
13,805.0	90.75	268.62	6,628.0	546.8	-7,104.0	7,123.7	1.57	1.08	-1.14
13,899.0	90.70	269.69	6,626.8	545.4	-7,197.9	7,217.4	1.14	-0.05	1.14
13,993.0	90.25	269.82	6,626.0	545.0	-7,291.9	7,311.2	0.50	-0.48	0.14

Company:	Noble Energy Inc.- Weld County, CO (Grid North)	Local Co-ordinate Reference:	Well 70 Ranch State BB18-655
Project:	Sec.17-T5N-R63W	TVD Reference:	WELL @ 4698.0ft (H&P 326 RKB - 30')
Site:	70 Ranch State BB18 Pad Sec.17-T5N-R63W	MD Reference:	WELL @ 4698.0ft (H&P 326 RKB - 30')
Well:	70 Ranch State BB18-655	North Reference:	Grid
Wellbore:	Wellbore #1	Survey Calculation Method:	Minimum Curvature
Design:	Wellbore #1	Database:	US_EDM

Survey									
Measured Depth (ft)	Inclination (°)	Azimuth (°)	Vertical Depth (ft)	+N/-S (ft)	+E/-W (ft)	Vertical Section (ft)	Dogleg Rate (°/100usft)	Build Rate (°/100usft)	Turn Rate (°/100usft)
14,088.0	88.50	270.32	6,627.0	545.1	-7,386.9	7,406.1	1.92	-1.84	0.53
14,182.0	88.93	270.23	6,629.1	545.5	-7,480.9	7,499.9	0.47	0.46	-0.10
14,276.0	90.53	270.09	6,629.6	545.8	-7,574.9	7,593.8	1.71	1.70	-0.15
14,371.0	91.23	269.65	6,628.1	545.6	-7,669.9	7,688.6	0.87	0.74	-0.46
14,466.0	89.94	269.83	6,627.1	545.2	-7,764.9	7,783.4	1.37	-1.36	0.19
14,560.0	91.48	270.05	6,626.0	545.1	-7,858.9	7,877.2	1.65	1.64	0.23
14,654.0	90.91	270.32	6,624.0	545.4	-7,952.8	7,971.1	0.67	-0.61	0.29
14,749.0	89.89	270.21	6,623.4	545.8	-8,047.8	8,065.9	1.08	-1.07	-0.12
14,843.0	90.50	270.27	6,623.0	546.2	-8,141.8	8,159.8	0.65	0.65	0.06
15,032.0	89.97	270.02	6,622.3	546.7	-8,330.8	8,348.5	0.31	-0.28	-0.13
15,220.0	90.25	268.80	6,621.9	544.7	-8,518.8	8,536.1	0.67	0.15	-0.65
15,315.0	89.44	268.93	6,622.2	542.9	-8,613.8	8,630.8	0.86	-0.85	0.14
15,503.0	88.18	269.09	6,626.1	539.6	-8,801.7	8,818.2	0.68	-0.67	0.09
15,598.0	89.49	268.67	6,628.0	537.8	-8,896.7	8,912.9	1.45	1.38	-0.44
15,693.0	91.95	269.42	6,626.8	536.2	-8,991.7	9,007.6	2.71	2.59	0.79
15,787.0	91.38	269.09	6,624.1	534.9	-9,085.6	9,101.3	0.70	-0.61	-0.35
15,882.0	91.71	270.45	6,621.5	534.6	-9,180.6	9,196.1	1.47	0.35	1.43
15,977.0	93.19	271.60	6,617.4	536.3	-9,275.5	9,291.0	1.97	1.56	1.21
16,072.0	91.23	273.14	6,613.8	540.2	-9,370.3	9,385.9	2.62	-2.06	1.62
16,188.0	90.34	274.02	6,612.2	547.4	-9,486.1	9,501.8	1.08	-0.77	0.76
16,252.0	90.34	274.02	6,611.8	551.9	-9,549.9	9,565.8	0.00	0.00	0.00
70 Ranch State BB18-655 BHL 2160'FNL & 535'FWL									

Checked By: _____ Approved By: _____ Date: _____