

WPX ENERGY ROCKY MOUNTAIN LLC-EBUS

RU 344-7

Nabors 576

Post Job Summary

Cement Surface Casing

Date Prepared: 4/01/2015

Job Date: 03/27/2015

Submitted by: Aaron Katz – Grand Junction Cement Engineer

The Road to Excellence Starts with Safety

Sold To #: 300721	Ship To #: 3599894	Quote #:	Sales Order #: 0902266954
Customer: WPX ENERGY ROCKY MOUNTAIN LLC-EBUS		Customer Rep: RICK OAKS	
Well Name: YOUBERG RU	Well #: 344-7	API/UWI #: 05-045-22523-00	
Field: RULISON	City (SAP): RIFLE	County/Parish: GARFIELD	State: COLORADO
Legal Description: SE SE-7-7S-93W-1141FSL-1183FEL			
Contractor: NABORS DRLG		Rig/Platform Name/Num: NABORS 576	
Job BOM: 7521			
Well Type: DIRECTIONAL GAS			
Sales Person: HALAMERICA\HB50180		Srvc Supervisor: Jesse Slaughter	

Job

Formation Name	
Formation Depth (MD)	Top Bottom
Form Type	BHST
Job depth MD	1309ft Job Depth TVD
Water Depth	Wk Ht Above Floor
Perforation Depth (MD)	From To

Well Data

Description	New / Used	Size in	ID in	Weight lbm/ft	Thread	Grade	Top MD ft	Bottom MD ft	Top TVD ft	Bottom TVD ft
Casing	0	9.625	9.001	32.3	8 RD (LT&C)	H-40	0	1309		0
Open Hole Section			13.5				0	1309		0

Tools and Accessories

Type	Size in	Qty	Make	Depth ft	Type	Size in	Qty	Make
Guide Shoe	9.625	1		1309	Top Plug	9.625	1	HES
Float Shoe	9.625	1			Bottom Plug	9.625		HES
Float Collar	9.625	1			SSR plug set	9.625		HES
Insert Float	9.625	1			Plug Container	9.625	1	HES
Stage Tool	9.625	1			Centralizers	9.625		HES

Miscellaneous Materials

Gelling Agt	Conc	Surfactant	Conc	Acid Type	Qty	Conc
Treatment Fld	Conc	Inhibitor	Conc	Sand Type	Size	Qty

Fluid Data

Stage/Plug #: 1									
Fluid #	Stage Type	Fluid Name	Qty	Qty UoM	Mixing Density lbm/gal	Yield ft3/sack	Mix Fluid Gal	Rate bbl/min	Total Mix Fluid Gal
1	Fresh Water	Fresh Water	20	bbl	8.34			4	
Fluid #	Stage Type	Fluid Name	Qty	Qty UoM	Mixing Density lbm/gal	Yield ft3/sack	Mix Fluid Gal	Rate bbl/min	Total Mix Fluid Gal
2	VariCem GJ1	VARICEM (TM) CEMENT	175	sack	12.3	2.38		7	13.77

13.70 Gal		FRESH WATER								
0.25 lbm		POLY-E-FLAKE (101216940)								
Fluid #	Stage Type	Fluid Name	Qty	Qty UoM	Mixing Density lbm/gal	Yield ft3/sack	Mix Fluid Gal	Rate bbl/mi n	Total Mix Fluid Gal	
3	VariCem GJ1	VARICEM (TM) CEMENT	175	sack	12.8	2.11		7	11.78	
0.25 lbm		POLY-E-FLAKE (101216940)								
11.78 Gal		FRESH WATER								
Fluid #	Stage Type	Fluid Name	Qty	Qty UoM	Mixing Density lbm/gal	Yield ft3/sack	Mix Fluid Gal	Rate bbl/mi n	Total Mix Fluid Gal	
4	Fresh Water Displacement	Fresh Water Displacement	99.5	bbl	8.34			6		
Cement Left In Pipe	Amount	44 ft			Reason	Shoe Joint				
Comment										

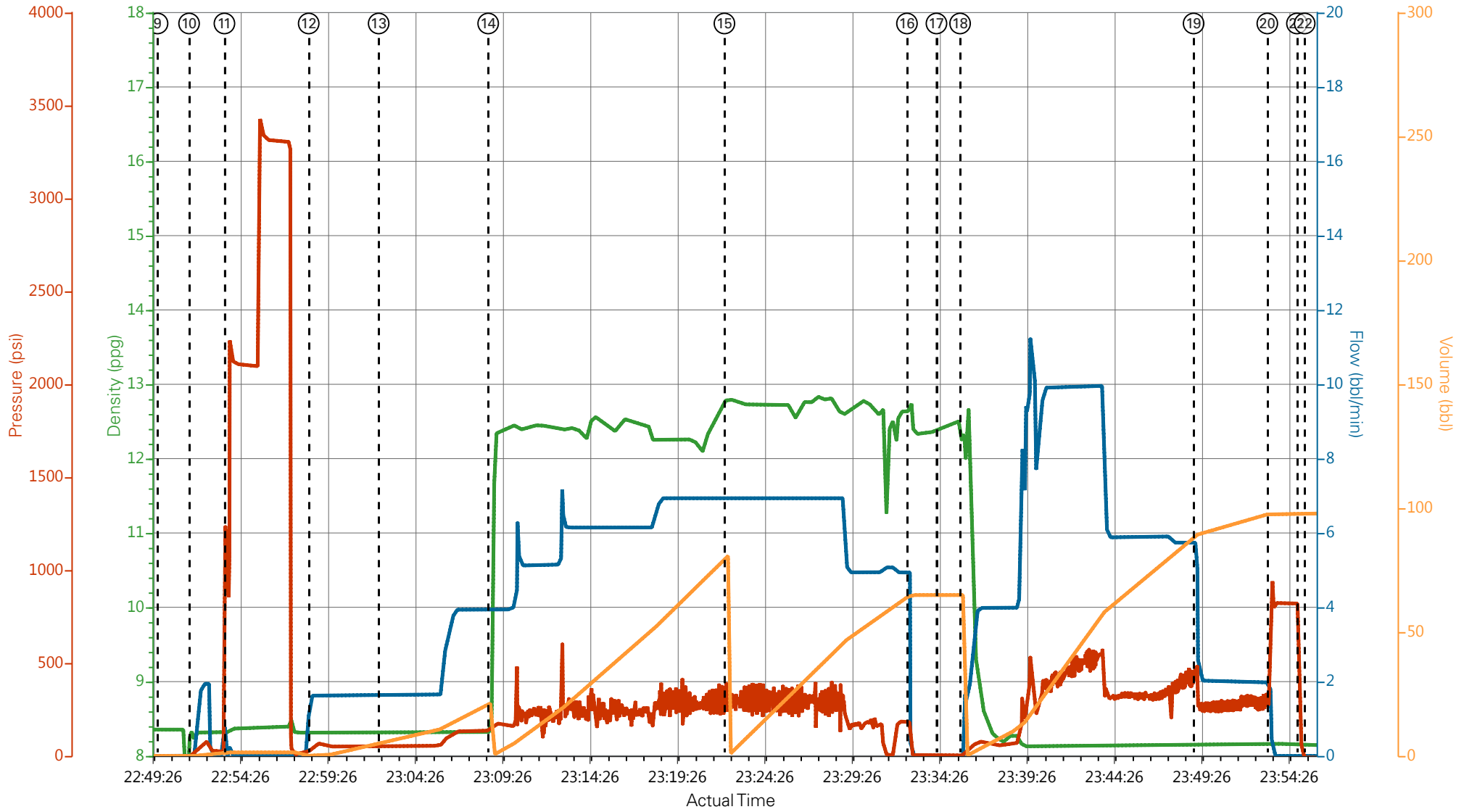
1.0 Real-Time Job Summary

1.1 Job Event Log

Type	Seq. No.	Graph Label	Date	Time	Source	DH Density <i>(ppg)</i>	Comb Pump Rate <i>(bbl/min)</i>	PS Pump Press <i>(psi)</i>	Pump Stg Tot <i>(bbl)</i>	Comments
Event	1	Call Out	3/26/2015	15:00:00	USER					
Event	2	Pre-Convoy Safety Meeting	3/26/2015	17:50:00	USER					WITH ALL HES PERSONNEL
Event	3	Crew Leave Yard	3/26/2015	18:00:00	USER					
Event	4	Arrive At Loc	3/26/2015	20:00:00	USER					RIG WAS RUNNING CASING UPON HES ARRIVAL
Event	5	Assessment Of Location Safety Meeting	3/26/2015	20:20:00	USER					WITH ALL HES PERSONNEL
Event	6	Spot Equipment	3/26/2015	20:30:00	USER					
Event	7	Pre-Rig Down Safety Meeting	3/26/2015	20:50:00	USER					WITH ALL HES PERSONNEL
Event	8	Rig-Up Equipment	3/26/2015	21:00:00	USER					
Event	9	Start Job	3/26/2015	22:49:52	RTD Import					TD 1325 FT, TP 1308.89 FT, SHOE 44.12 FT, CSG 9 5/8 IN 32.3 LB/FT, HOLE 13 1/2 IN, MUD WT 9 PPG 70 VIS.
Event	10	Prime Pumps	3/26/2015	22:51:40	RTD Import	8.33	2.0	70.0	2.0	FRESH WATER
Event	11	Test Lines	3/26/2015	22:53:41	RTD Import					TESTED LINES TO 3326 PSI PRESSURE HOLDING.
Event	12	Pump H2O Spacer	3/26/2015	22:58:30	RTD Import	8.33	4.0	135.0	20.0	FRESH WATER
Event	13	Mud Cup Sample Pulled	3/26/2015	23:02:31	RTD Import					SCALES SHOWING 12.25 PPG
Event	14	Pump Lead Cement*	3/26/2015	23:08:47	RTD Import	12.3	7.0	300.0	74.2	175 SKS AT 12.3 PPG, 2.38 FT3/SK, 13.7 GAL/SK
Event	15	Pump Tail Cement*	3/26/2015	23:22:18	RTD	12.8	7.0	272.0	65.8	175 SKS AT 12.8 PPG, 2.11 FT3/SK, 11.78 GAL/SK

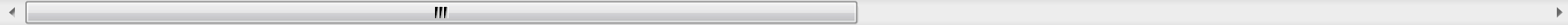
Import											
Event	16	Shutdown	3/26/2015	23:32:44	USER						
Event	17	Drop Top Plug	3/26/2015	23:34:25	USER						PLUG LAUNCHED
Event	18	Pump Displacement*	3/26/2015	23:35:47	RTD Import	8.33	6.0	360.0	99.5		FRESH WATER
Event	19	Slow Rate	3/26/2015	23:49:08	USER	8.33	2.0	293.0	89.5		SLOWED RATE 10 BBLS PRIOR TO CALCULATED DISPLACEMENT.
Event	20	Bump Plug	3/26/2015	23:53:21	RTD Import			820.0			
Event	21	Check Floats	3/26/2015	23:55:03	USER						FLOATS HOLDING. HES RETURNED 1/2 BBL H2O TO PUMP.
Event	22	End Job	3/26/2015	23:55:30	USER						PIPE WAS STATIC DURING JOB, GOOD CIRCULATION THROUGHOUT JOB. HES RETURNED 40 BBLS CEMENT TO SURFACE. USED 50 LBS SUGAR FOR JOB.
Event	23	Pre-Rig Down Safety Meeting	3/27/2015	00:00:00	USER						WITH ALL HES PERSONNEL
Event	24	Rig-Down Equipment	3/27/2015	00:05:00	USER						
Event	25	Pre-Convoy Safety Meeting	3/27/2015	01:20:00	USER						WITH ALL HES PERSONNEL
Event	26	Crew Leave Location	3/27/2015	01:30:00	USER						
Event	27	Comment	3/27/2015	01:31:00	USER						THANK YOU FOR USING HALLIBURTON CEMENT DEPARTMENT. JESSE SLAUGHTER AND CREW.

WPX ENERGY - RU 344-7 - SURFACE



DH Density (ppg) Comb Pump Rate (bbl/min) PS Pump Press (psi) Pump Stg Tot (bbl)

- ① Call Out ③ Crew Leave Yard ⑤ Assessment Of Location Safety Meeting ⑦ Pre-Rig Down Safety Meeting ⑨ Start Job ⑪ Test Lines ⑬ Mud Cup Sample Pulled
- ② Pre-Convoy Safety Meeting ④ Arrive At Loc ⑥ Spot Equipment ⑧ Rig-Up Equipment ⑩ Prime Pumps ⑫ Pump H2O Spacer ⑭ Pump Lead Cement*



HALLIBURTON | iCem® Service

Created: 2015-03-27 00:09:04, Version: 4.1.107

Edit

Customer: WPX ENERGY ROCKY MOUNTAIN LLC-EBUS

Job Date: 3/26/2015 9:52:29 PM

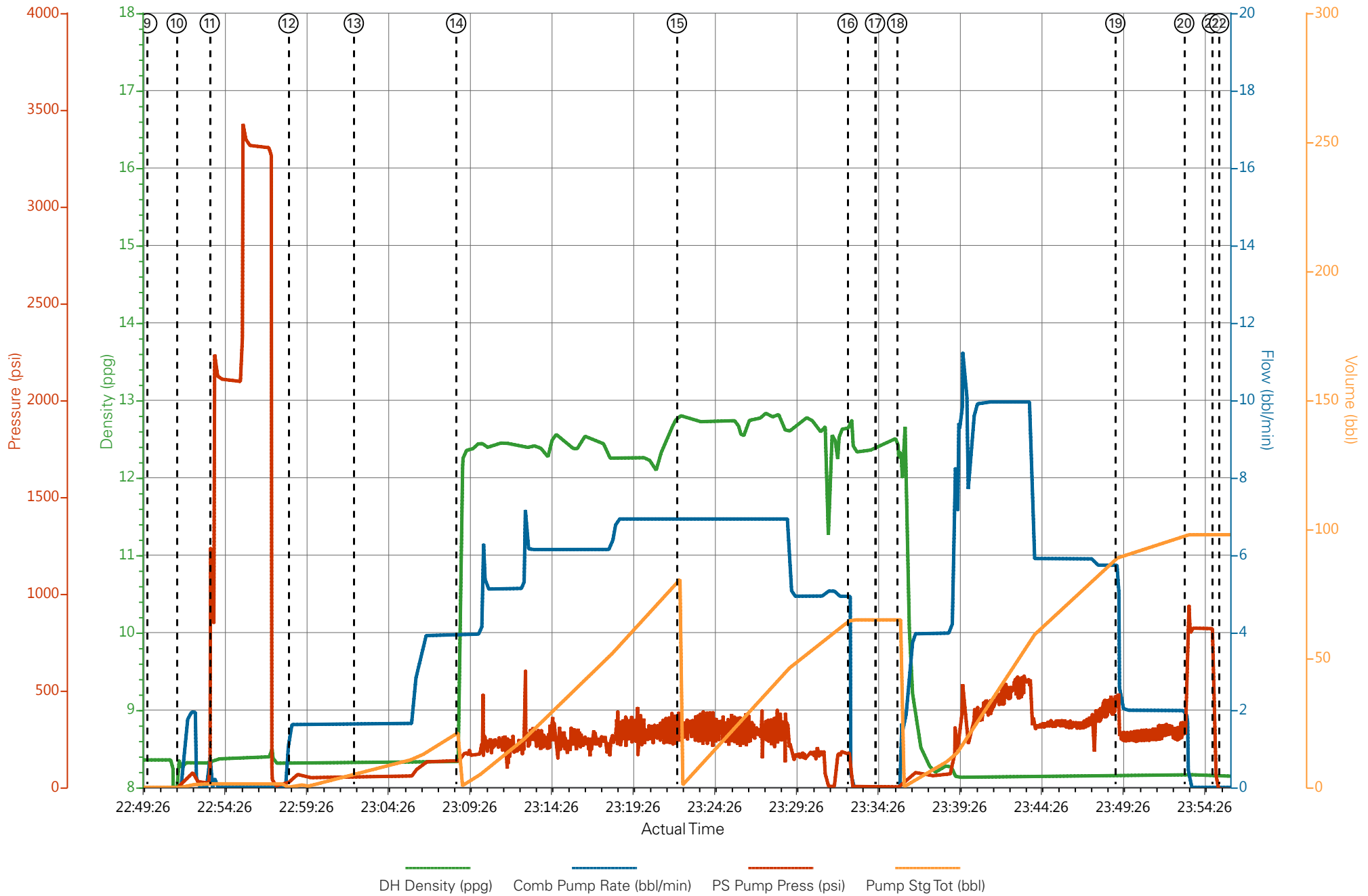
Well: RU 344-7

Representative: RICK OAKS

Sales Order #: 902266954

Elite# 7: JESSE SLAUGHTER / RYAN MARTIN

WPX ENERGY - RU 344-7 - SURFACE



HALLIBURTON

Water Analysis Report

Company: WILLIAMS PRODUCTION

Date: 3/26/2015

Submitted by: JESSE SLAUGHTER

Date Rec.: _____

Attention: LAB

S.O.# 902266954

Lease RU

Job Type: SURFACE

Well # 344-7

Specific Gravity	<i>MAX</i>	1
pH	<i>8</i>	6
Potassium (K)	<i>5000</i>	250 Mg / L
Calcium (Ca)	<i>500</i>	120 Mg / L
Iron (FE2)	<i>300</i>	0 Mg / L
Chlorides (Cl)	<i>3000</i>	0 Mg / L
Sulfates (SO ₄)	<i>1500</i>	UNDER 200 Mg / L
Chlorine (Cl ₂)		0 Mg / L
Temp	<i>40-80</i>	60 Deg
Total Dissolved Solids		200 Mg / L

Respectfully: JESSE SLAUGHTER

Title: CEMENTING SUPERVISOR

Location: Grand Junction, CO

NOTICE:

This report is limited to the described sample tested. Any person using or relying on this report agrees that Halliburton shall not be liable for any loss or damage whether due to act or omission resulting from such report or its