

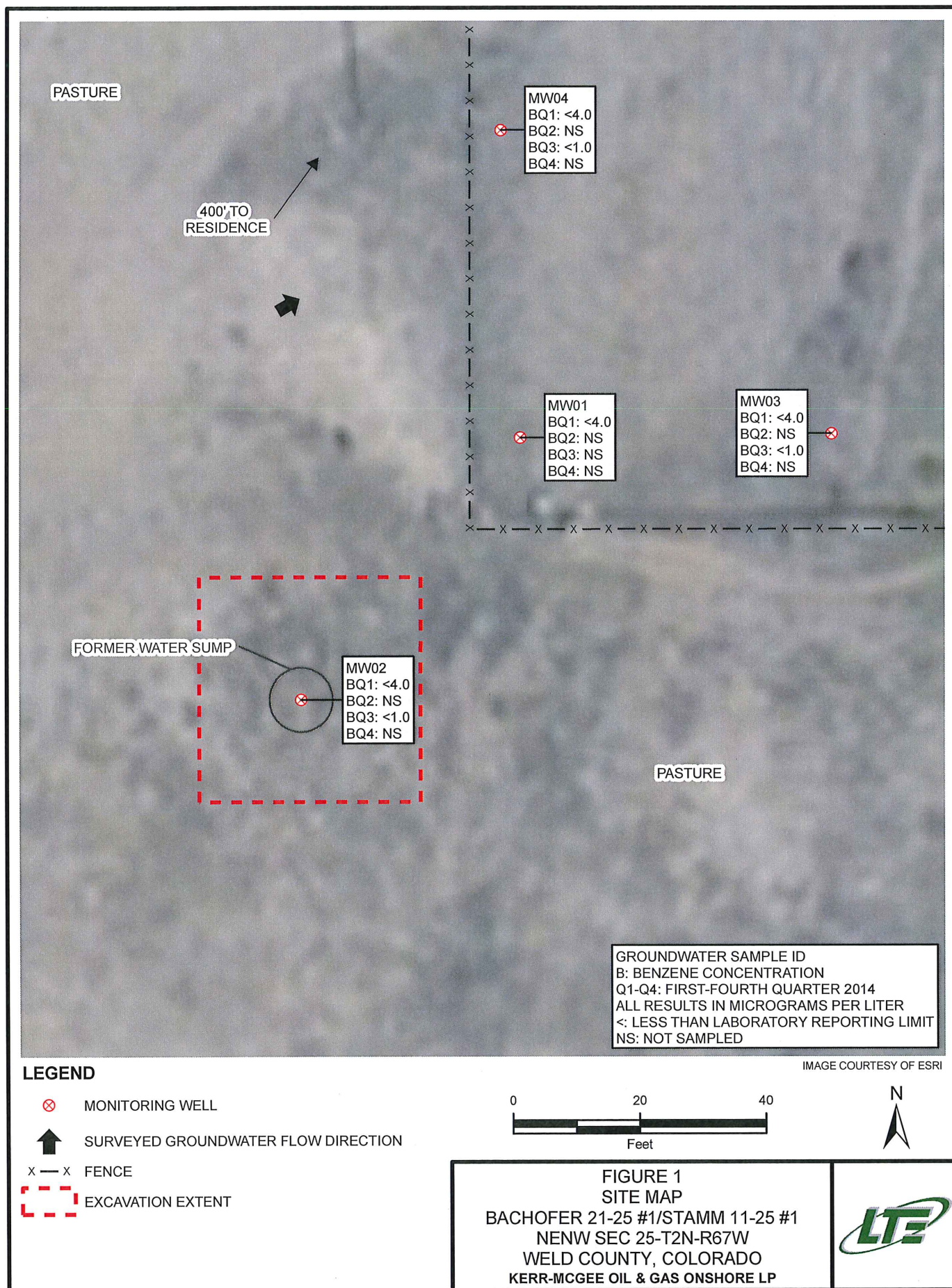
2014 ANNUAL PROJECT SUMMARY TABLE

Incident Date	Remediation No.	Well Name	API	Status	NFA Submitted	NFA Approved Date	Site Summary (monitoring/remediation/ wells installed or destroyed)	Wells Sampled (Last Quarter) 2014	Wells Exceeding 5 ug/L Benzene (Last Quarter Sampled 2014)	Benzene Range (ug/L) (Last Quarter 2014)	Established POC	2015 Recommendations	Well Reduction Request
10/2/2008	4462	Bachofer 21-25 #1/ Stamm 11-25 #1	05-123-06010	Remediation	NO	NA	Quarterly groundwater monitoring since November 2008. Passive SVE system installed and MicroBlaze injection completed in 2009. Groundwater monitoring was installed from quarterly to semi-annual monitoring in 2011. Impacted soil lift in-place below 20' was assessed in February/March 2013 to evaluate the effectiveness of the passive SVE remediation. Soil analytical results show that concentrations continue to decline.	MM002-MM004 (July 2014)	None	ND	YES	Passive SVE remediation will continue. Semi-annual groundwater monitoring will continue.	NA

Notes:

NA - Not Applicable  
 ND - Non-Detect  
 NFA - No Further Action  
 POC - Point of Compliance

received 12/14/2015  
 Project 4462 summary for 2014  
 Document #: 2210844





**TABLE 1**  
**GROUNDWATER ANALYTICAL AND FIELD RESULTS**  
**BACHOFER 21-25 #1/ STAMM 11-25 #1**  
**WELD COUNTY, COLORADO**  
**KERR-MCGEE OIL & GAS ONSHORE LP**

Well Name	Date	Benzene (ug/L)	Toluene (ug/L)	Ethylbenzene (ug/L)	Xylenes (ug/L)	Depth Water/ (Product Thickness) (ft bgs)	Relative GW Elev. (ft)
MW01	10/27/2008	<1.0	<1.0	<1.0	<1.0	44.98	53.26
	11/06/2008	<1.0	<1.0	<1.0	<1.0	44.56	52.84
	01/15/2009	<1.0	<1.0	<1.0	<1.0	47.31	50.59
	04/20/2009	<1.0	<1.0	<1.0	<1.0	47.43	49.97
	07/29/2009	<1.0	<1.0	<1.0	<1.0	41.71	55.69
	10/23/2009	<1.0	<1.0	<1.0	<1.0	43.36	54.04
	01/25/2010	<1.0	<1.0	<1.0	<1.0	47.69	49.71
	04/12/2010	<1.0	<1.0	<1.0	<1.0	48.63	48.77
	07/07/2010	<1.0	<1.0	<1.0	<1.0	42.31	55.09
	10/04/2010	<1.0	<1.0	<1.0	<1.0	41.61	55.79
	01/19/2011	<1.0	<1.0	<1.0	<1.0	47.36	50.04
	07/27/2011	<1.0	<1.0	<1.0	<1.0	42.04	55.36
	01/17/2012	<1.0	<1.0	<1.0	<1.0	44.39	53.01
	07/06/2012	<1.0	<1.0	<1.0	<1.0	43.58	54.87
	01/31/2013	<1.0	<1.0	<1.0	<1.0	46.90	50.50
	07/25/2013	<1.0	<1.0	<1.0	<1.0	43.35	54.05
	12/12/2013	Surveyed - Not Sampled				48.55	49.90
	01/15/2014	<4.0	<4.0	<4.0	<4.0	48.07	49.33
	01/16/2014	Dry - Not Sampled				Dry	NA
	07/24/2014	Dry - Not Sampled				Dry	NA
MW02	10/27/2008	<1.0	<1.0	5.0	16	35.23	61.65
	11/06/2008	<1.0	<1.0	1.3	3.0	35.79 (0.03)	61.20
	01/15/2009	<1.0	<1.0	<1.0	<1.0	47.10	49.99
	04/20/2009	<1.0	<1.0	<1.0	<1.0	47.56	49.53
	07/29/2009	<1.0	<1.0	<1.0	4.4	41.56	55.53
	10/23/2009	<1.0	<1.0	<1.0	<1.0	42.86	54.23
	01/25/2010	<1.0	<1.0	<1.0	<1.0	47.07	50.02
	04/12/2010	<1.0	<1.0	<1.0	<1.0	47.65	49.44
	07/07/2010	<1.0	<1.0	<1.0	<1.0	41.82	55.27
	10/04/2010	<1.0	<1.0	<1.0	<1.0	41.13	55.96
	01/19/2011	<1.0	<1.0	<1.0	<1.0	46.85	50.24
	07/27/2011	<1.0	<1.0	<1.0	<1.0	41.63	55.46
	01/17/2012	<1.0	<1.0	<1.0	<1.0	43.93	53.16
	07/06/2012	<1.0	<1.0	<1.0	<1.0	41.76	54.93
	01/31/2013	<1.0	<1.0	<1.0	<1.0	46.45	50.64



**TABLE 1 (Continued)**  
**GROUNDWATER ANALYTICAL AND FIELD RESULTS**  
**BACHOFER 21-25 #1/ STAMM 11-25 #1**  
**WELD COUNTY, COLORADO**  
**KERR-MCGEE OIL & GAS ONSHORE LP**

Well Name	Date	Benzene (ug/L)	Toluene (ug/L)	Ethylbenzene (ug/L)	Xylenes (ug/L)	Depth Water/ (Product Thickness) (ft bgs)	Relative GW Elev. (ft)
MW02	07/25/2013	<1.0	<1.0	<1.0	<1.0	42.88	54.21
	12/12/2013	Surveyed - Not Sampled				46.81	50.08
	01/15/2014	<4.0	<4.0	<4.0	<4.0	47.62	49.47
	07/24/2014	<1.0	<1.0	<1.0	<1.0	46.80	50.09
MW03	11/06/2008	<1.0	<1.0	<1.0	<1.0	46.15	52.66
	01/15/2009	<1.0	<1.0	<1.0	<1.0	48.88	49.93
	04/20/2009	<1.0	<1.0	<1.0	<1.0	49.17	49.64
	07/29/2009	<1.0	<1.0	<1.0	<1.0	43.21	55.60
	10/23/2009	<1.0	<1.0	<1.0	<1.0	44.95	53.86
	01/25/2010	<1.0	<1.0	<1.0	<1.0	49.30	49.51
	04/12/2010	<1.0	<1.0	<1.0	<1.0	49.71	49.20
	07/07/2010	<1.0	<1.0	<1.0	<1.0	43.83	54.98
	10/04/2010	<1.0	<1.0	<1.0	<1.0	43.18	55.63
	01/19/2011	<1.0	<1.0	<1.0	<1.0	48.95	49.86
	07/27/2011	<1.0	<1.0	<1.0	<1.0	43.60	55.21
	01/17/2012	<1.0	<1.0	<1.0	<1.0	45.88	52.93
	07/06/2012	<1.0	<1.0	<1.0	<1.0	44.19	54.72
	01/31/2013	<1.0	<1.0	<1.0	<1.0	50.40	48.41
	07/25/2013	<1.0	<1.0	<1.0	<1.0	44.86	53.95
	12/12/2013	Surveyed - Not Sampled				49.21	49.74
	01/15/2014	<4.0	<4.0	<4.0	<4.0	49.63	49.18
	07/24/2014	<1.0	<1.0	<1.0	<1.0	49.25	49.70
MW04	11/06/2008	<1.0	<1.0	<1.0	<1.0	45.06	52.73
	01/15/2009	<1.0	<1.0	<1.0	<1.0	47.37	50.42
	04/20/2009	<1.0	<1.0	<1.0	<1.0	48.01	49.78
	07/29/2009	<1.0	<1.0	<1.0	<1.0	42.23	55.56
	10/23/2009	<1.0	<1.0	<1.0	<1.0	43.94	53.85
	01/25/2010	<1.0	<1.0	<1.0	<1.0	48.22	49.57
	04/12/2010	<1.0	<1.0	<1.0	<1.0	48.59	49.20
	07/07/2010	<1.0	<1.0	<1.0	<1.0	42.90	54.89
	10/04/2010	<1.0	<1.0	<1.0	<1.0	42.20	55.59
	01/19/2011	<1.0	<1.0	<1.0	<1.0	47.93	49.86
	07/27/2011	<1.0	<1.0	<1.0	<1.0	42.65	55.14
	01/17/2012	<1.0	<1.0	<1.0	<1.0	45.08	52.71



**TABLE 1 (Continued)**  
**GROUNDWATER ANALYTICAL AND FIELD RESULTS**  
**BACHOFER 21-25 #1/ STAMM 11-25 #1**  
**WELD COUNTY, COLORADO**  
**KERR-MCGEE OIL & GAS ONSHORE LP**

Well Name	Date	Benzene (ug/L)	Toluene (ug/L)	Ethylbenzene (ug/L)	Xylenes (ug/L)	Depth Water/ (Product Thickness) (ft bgs)	Relative GW Elev. (ft)
MW04	07/06/2012	<1.0	<1.0	<1.0	<1.0	43.28	54.66
	01/31/2013	<1.0	<1.0	<1.0	<1.0	47.52	50.27
	07/25/2013	<1.0	<1.0	<1.0	<1.0	43.95	53.84
	12/12/2013	Surveyed - Not Sampled				48.23	49.83
	01/15/2014	<4.0	<4.0	<4.0	<4.0	48.53	49.26
	07/24/2014	<1.0	<1.0	<1.0	<1.0	48.27	49.79
<b>CGWQS</b>		<b>5</b>	<b>1000</b>	<b>700</b>	<b>1400</b>		

Notes: ug/L - micrograms per Liter  
ft bgs - feet below ground surface  
GW - Groundwater

Elev. - Elevation  
Bold numbers indicate result exceeded standard.  
< - less than

NA - Not Analyzed/Not Available  
NM - Not Measured  
CGWQS - Colorado Groundwater Quality Standards

