

2013 ANNUAL PROJECT SUMMARY TABLE

Incident Date	Remediation No.	Well Name	API	Status	NFA Submitted	NFA Approved Date	2013 Site Summary (monitoring/remediation/ wells installed or destroyed)	Wells Sampled (Last Quarter) 2013	Wells Exceeding 5 ug/L Benzene (Last Quarter Sampled 2013)	Benzene Range (ug/L) (Last Quarter 2013)	POC Established	2014 Recommendations	Well Reduction Request
10/2/2008	4462	Bachofer 21-25 #1/ Stamm 11-25 #1	05-123-08010	Remediation	NO	N/A	<p>Quarterly groundwater monitoring since Nov-2008.</p> <p>Passive SVE system installed and MicroBlaze injection completed in 2009.</p> <p>Groundwater monitoring was reduced from quarterly to semi-annual monitoring in 2011. Impacted soil left in-place below 20' was assessed in Feb/March 2013 to evaluate the effectiveness of the passive SVE remediation. Soil analytical results showed TPH concentrations continue to decline.</p>	MMW01-MMW04	None	ND	YES	Passive SVE remediation will continue. Semi-annual groundwater monitoring will continue.	N/A

Notes:

N/A - Not Applicable
 ND - Non-Detect
 NFA - No Further Action
 POC - Point of Compliance

received 12/14/2015
 Project 4462 summary for 2013
 Doc #: 2210843

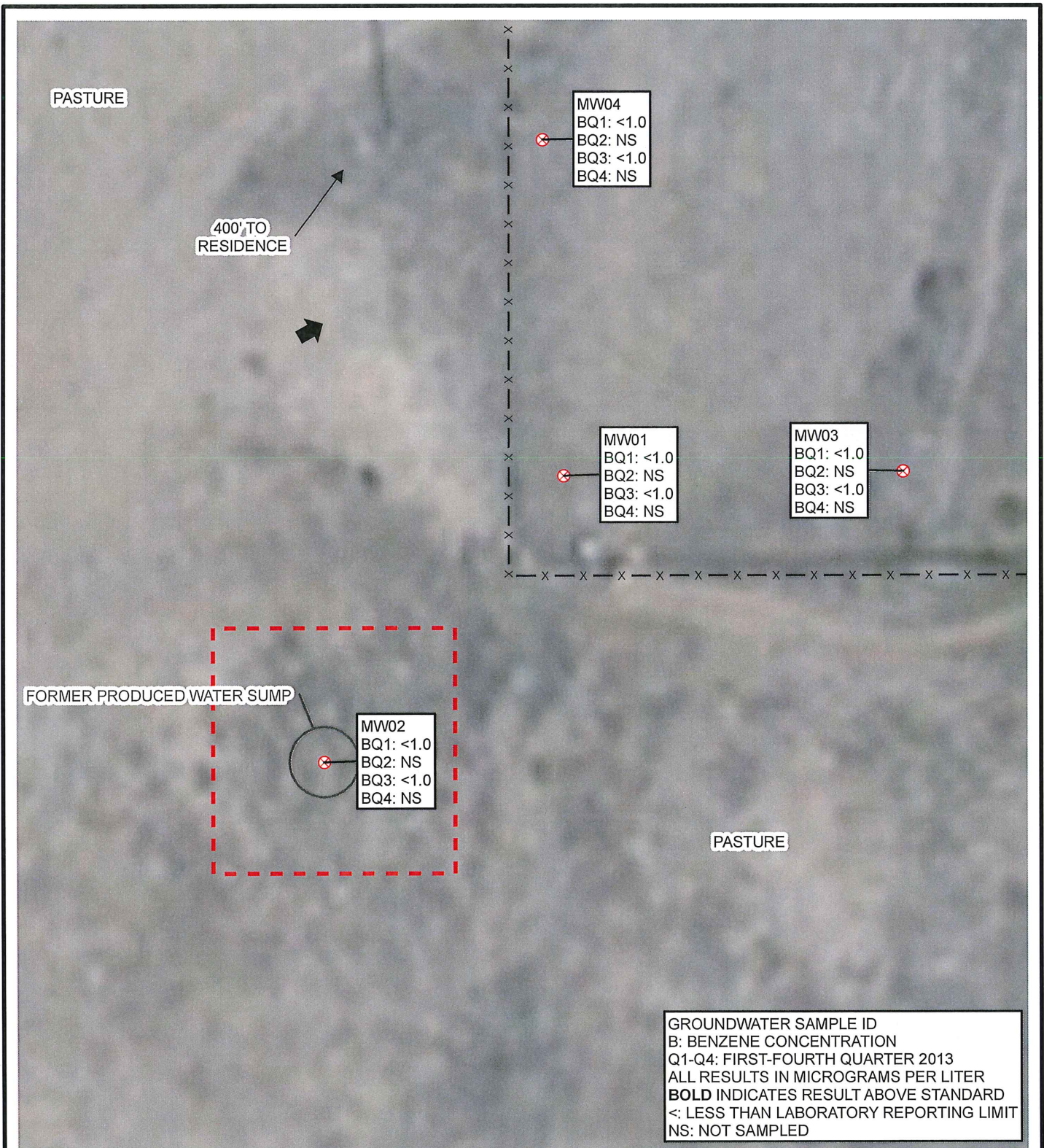






IMAGE COURTESY OF ESRI

LEGEND

-  MONITORING WELL
-  SURVEYED GROUNDWATER FLOW DIRECTION
-  FENCE
-  EXCAVATION EXTENT

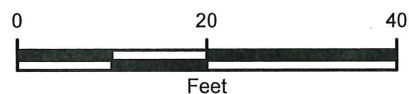


FIGURE 1
SITE MAP
BACHOFER 21-25 #1/STAMM 11-25 #1
NENW SEC 25-T2N-R67W
WELD COUNTY, COLORADO
KERR-MCGEE OIL & GAS ONSHORE LP



TABLE 1
GROUNDWATER ANALYTICAL AND FIELD RESULTS
BACHOFER 21-25 #1/ STAMM 11-25 #1
WELD COUNTY, COLORADO
KERR-MCGEE OIL & GAS ONSHORE LP

Well Name	Date	Benzene (ug/L)	Toluene (ug/L)	Ethylbenzene (ug/L)	Xylenes (ug/L)	Depth Water/ (Product Thickness) (ft bgs)
MW01	10/27/2008	<1.0	<1.0	<1.0	<1.0	44.98
	11/06/2008	<1.0	<1.0	<1.0	<1.0	44.56
	01/15/2009	<1.0	<1.0	<1.0	<1.0	47.31
	04/20/2009	<1.0	<1.0	<1.0	<1.0	47.43
	07/29/2009	<1.0	<1.0	<1.0	<1.0	41.71
	10/23/2009	<1.0	<1.0	<1.0	<1.0	43.36
	01/25/2010	<1.0	<1.0	<1.0	<1.0	47.69
	04/12/2010	<1.0	<1.0	<1.0	<1.0	48.63
	07/07/2010	<1.0	<1.0	<1.0	<1.0	42.31
	10/04/2010	<1.0	<1.0	<1.0	<1.0	41.61
	01/19/2011	<1.0	<1.0	<1.0	<1.0	47.36
	07/27/2011	<1.0	<1.0	<1.0	<1.0	42.04
	01/17/2012	<1.0	<1.0	<1.0	<1.0	44.39
	07/06/2012	<1.0	<1.0	<1.0	<1.0	43.58
	01/31/2013	<1.0	<1.0	<1.0	<1.0	46.90
	07/25/2013	<1.0	<1.0	<1.0	<1.0	43.35
MW02	10/27/2008	<1.0	<1.0	5.0	16	35.23
	11/06/2008	<1.0	<1.0	1.3	3.0	35.79 (0.03)
	01/15/2009	<1.0	<1.0	<1.0	<1.0	47.10
	04/20/2009	<1.0	<1.0	<1.0	<1.0	47.56
	07/29/2009	<1.0	<1.0	<1.0	4.4	41.56
	10/23/2009	<1.0	<1.0	<1.0	<1.0	42.86
	01/25/2010	<1.0	<1.0	<1.0	<1.0	47.07
	04/12/2010	<1.0	<1.0	<1.0	<1.0	47.65
	07/07/2010	<1.0	<1.0	<1.0	<1.0	41.82
	10/04/2010	<1.0	<1.0	<1.0	<1.0	41.13
	01/19/2011	<1.0	<1.0	<1.0	<1.0	46.85
	07/27/2011	<1.0	<1.0	<1.0	<1.0	41.63
	01/17/2012	<1.0	<1.0	<1.0	<1.0	43.93
	07/06/2012	<1.0	<1.0	<1.0	<1.0	41.76
	01/31/2013	<1.0	<1.0	<1.0	<1.0	46.45
	07/25/2013	<1.0	<1.0	<1.0	<1.0	42.88



TABLE 1 (Continued)
GROUNDWATER ANALYTICAL AND FIELD RESULTS
BACHOFER 21-25 #1/ STAMM 11-25 #1
WELD COUNTY, COLORADO
KERR-MCGEE OIL & GAS ONSHORE LP

Well Name	Date	Benzene (ug/L)	Toluene (ug/L)	Ethylbenzene (ug/L)	Xylenes (ug/L)	Depth Water/ (Product Thickness) (ft bgs)
MW03	11/06/2008	<1.0	<1.0	<1.0	<1.0	46.15
	01/15/2009	<1.0	<1.0	<1.0	<1.0	48.88
	04/20/2009	<1.0	<1.0	<1.0	<1.0	49.17
	07/29/2009	<1.0	<1.0	<1.0	<1.0	43.21
	10/23/2009	<1.0	<1.0	<1.0	<1.0	44.95
	01/25/2010	<1.0	<1.0	<1.0	<1.0	49.30
	04/12/2010	<1.0	<1.0	<1.0	<1.0	49.71
	07/07/2010	<1.0	<1.0	<1.0	<1.0	43.83
	10/04/2010	<1.0	<1.0	<1.0	<1.0	43.18
	01/19/2011	<1.0	<1.0	<1.0	<1.0	48.95
	07/27/2011	<1.0	<1.0	<1.0	<1.0	43.60
	01/17/2012	<1.0	<1.0	<1.0	<1.0	45.88
	07/06/2012	<1.0	<1.0	<1.0	<1.0	44.19
	01/31/2013	<1.0	<1.0	<1.0	<1.0	50.40
	07/25/2013	<1.0	<1.0	<1.0	<1.0	44.86
MW04	11/06/2008	<1.0	<1.0	<1.0	<1.0	45.06
	01/15/2009	<1.0	<1.0	<1.0	<1.0	47.37
	04/20/2009	<1.0	<1.0	<1.0	<1.0	48.01
	07/29/2009	<1.0	<1.0	<1.0	<1.0	42.23
	10/23/2009	<1.0	<1.0	<1.0	<1.0	43.94
	01/25/2010	<1.0	<1.0	<1.0	<1.0	48.22
	04/12/2010	<1.0	<1.0	<1.0	<1.0	48.59
	07/07/2010	<1.0	<1.0	<1.0	<1.0	42.90
	10/04/2010	<1.0	<1.0	<1.0	<1.0	42.20
	01/19/2011	<1.0	<1.0	<1.0	<1.0	47.93
	07/27/2011	<1.0	<1.0	<1.0	<1.0	42.65
	01/17/2012	<1.0	<1.0	<1.0	<1.0	45.08
	07/06/2012	<1.0	<1.0	<1.0	<1.0	43.28
	01/31/2013	<1.0	<1.0	<1.0	<1.0	47.52
	07/25/2013	<1.0	<1.0	<1.0	<1.0	43.95
Colo GW Quality Standards		5	1000	700	1400	

Notes: NM - Not Measured
ug/L - micrograms per Liter
NA - Not Analyzed/Not Available

GW - Groundwater ft bgs - feet below ground surface
< - less than laboratory reporting limit
Bold numbers indicate result equaled or exceeded standard.

