

**RADIAL CEMENT BOND
GAMMA RAY
CCL**

Company ANADARKO PETROLEUM CORPORATION		Company ANADARKO PETROLEUM CORPORATION					
Well SUCKLA FARMS INC F UNIT 1		Well SUCKLA FARMS INC F UNIT 1					
Field WATTENBERG		Field WATTENBERG					
County WELD		County WELD					
State CO		State CO					
Location: API # : 05-123-07842 SW/NE LAT:40.06820 & LONG: -104.87340		Other Services					
SEC 10 TWP 1N RGE 67W		Elevation					
Permanent Datum GL KB 10'		KB. 5086'					
Log Measured From KB		D.F. 5085'					
Drilling Measured From KB		G.L. 5076'					
Date	1-5-2016						
Run Number	ONE						
Depth Driller	8309'						
Depth Logger	5560'						
Bottom Logged Interval	5551'						
Top Log Interval	SURFACE						
Open Hole Size	7.875						
Type Fluid	WATER						
Density / Viscosity	1.0						
Max. Recorded Temp.	153 DEG F						
Estimated Cement Top	454'						
Time Well Ready	N/A						
Time Logger on Bottom	N/A						
Equipment Number	4310						
Location	GREELEY						
Recorded By	N. BREHMER						
Witnessed By	L. LEHNERT						
Borehole Record		Tubing Record					
Run Number	Bit	From	To	Size	Weight	From	To
Casing Record	Size		Wgt/Ft	Top	Bottom		
Surface String	8.63		24#	SURFACE	225'		
Prot. String							
Production String	4.5		10.5# & 11.6#	SURFACE	8299'		
Liner							

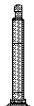
<<< Fold Here >>>

All interpretations are opinions based on inferences from electrical or other measurements and we cannot and do not guarantee the accuracy or correctness of any interpretation, and we shall not, except in the case of gross or willful negligence on our part, be liable or responsible for any loss, costs, damages, or expenses incurred or sustained by anyone resulting from any interpretation made by any of our officers, agents or employees. These interpretations are also subject to our general terms and conditions set out in our current Price Schedule.

Comments

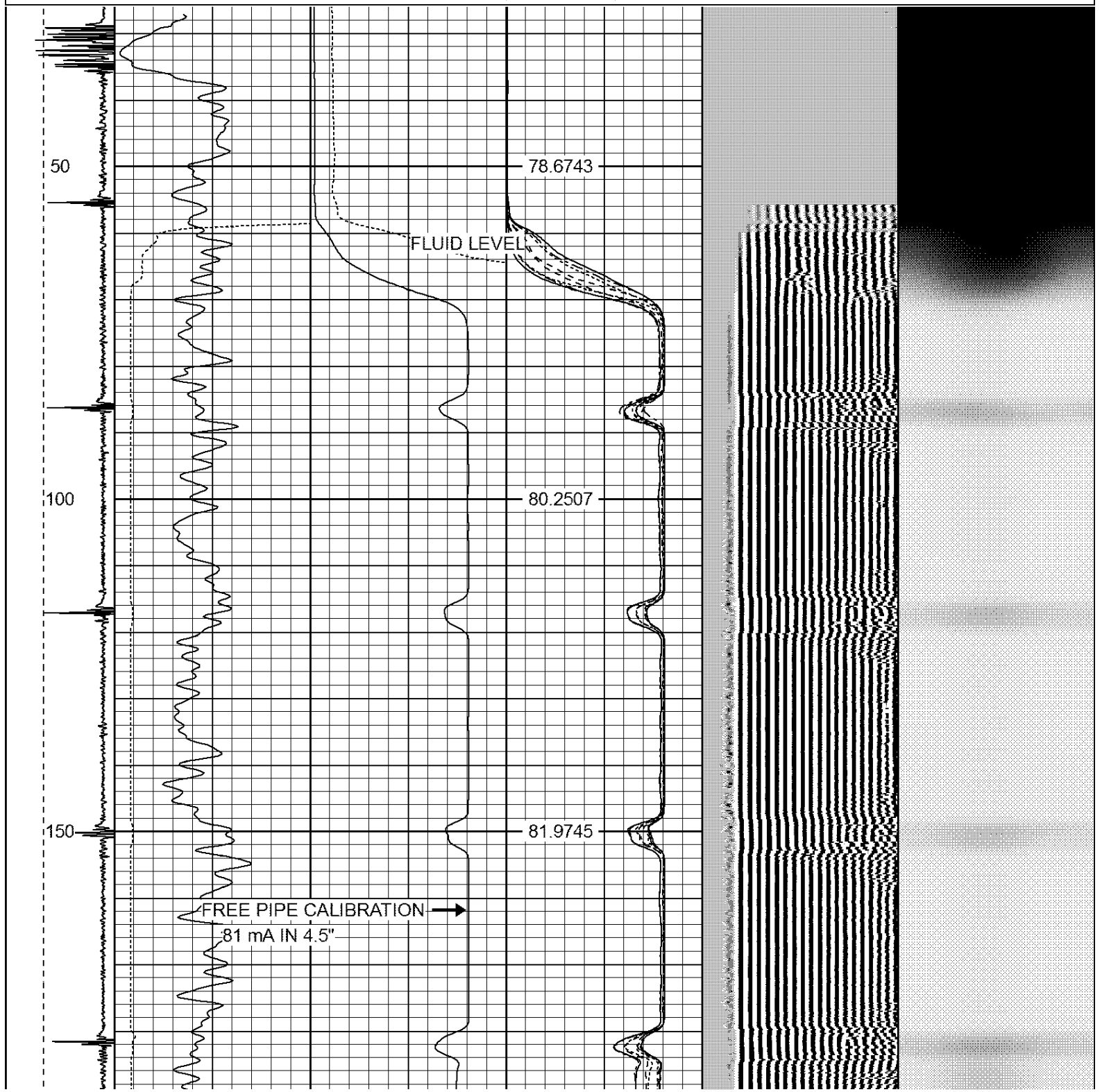
RAN CBL TO VERIFY CEMENT BOND
HOLE WAS LOADED NIGHT BEFORE LOG
CORRELATED 29' IN HOLE TO SCHLUMBERGER LOG AUG. 95
CALIBRATED FREE PIPE @170' 81MA IN 4.5"

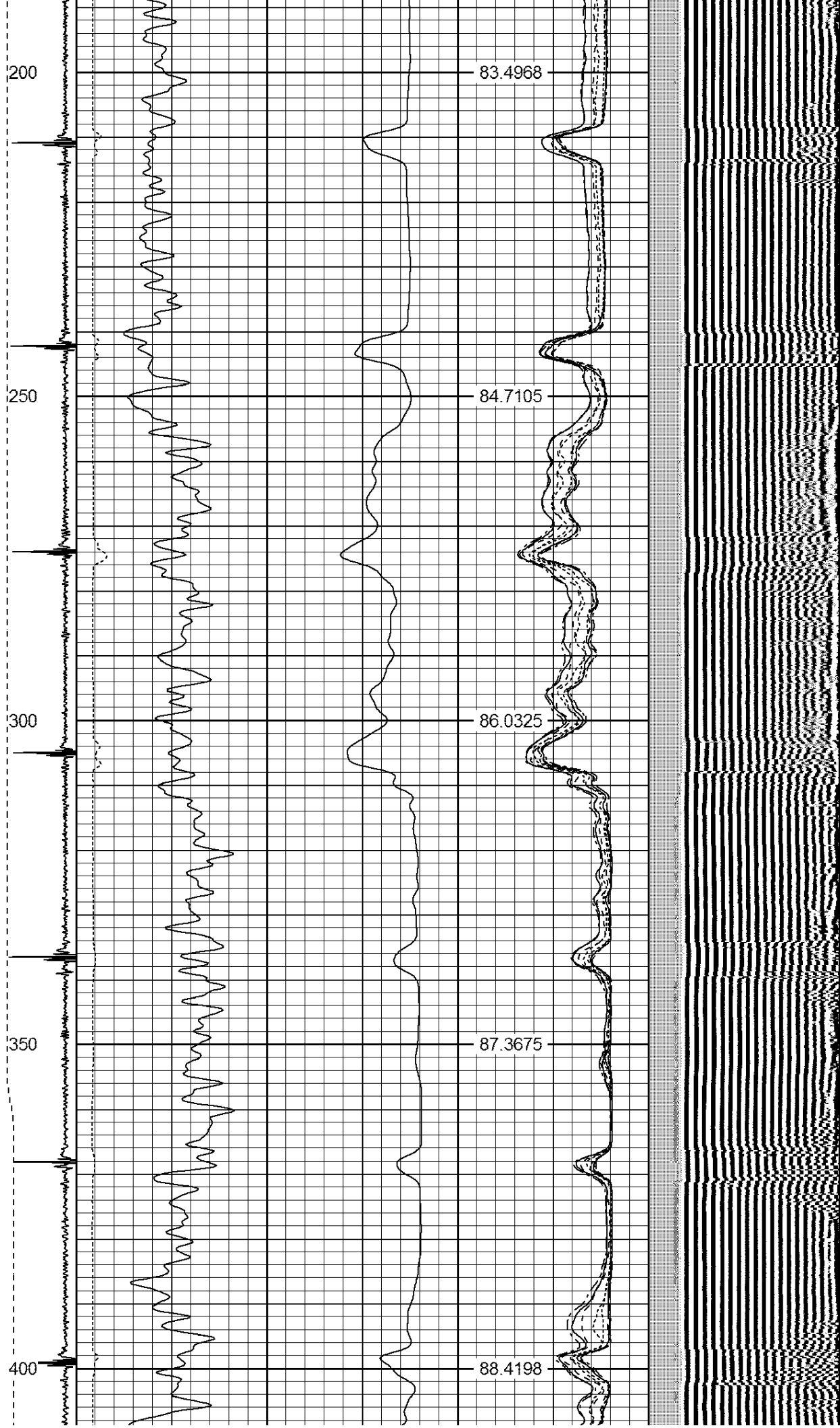
THANK YOU FOR USING WARRIOR !!!!!!!

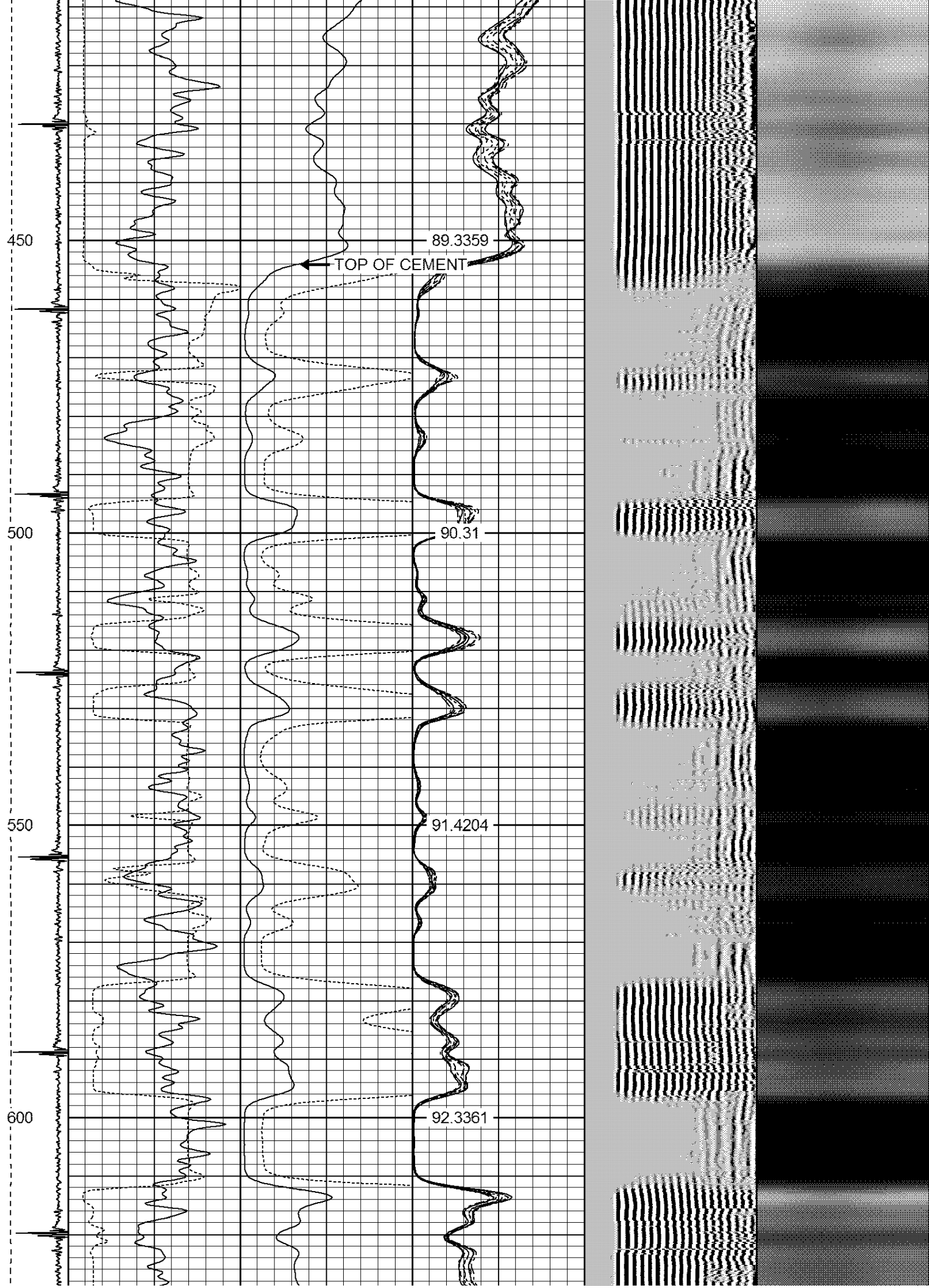
Sensor	Offset (ft)	Schematic	Description	Len (ft)	OD (in)	Wt (lb)
			1_4	1.00	1.36	5.00

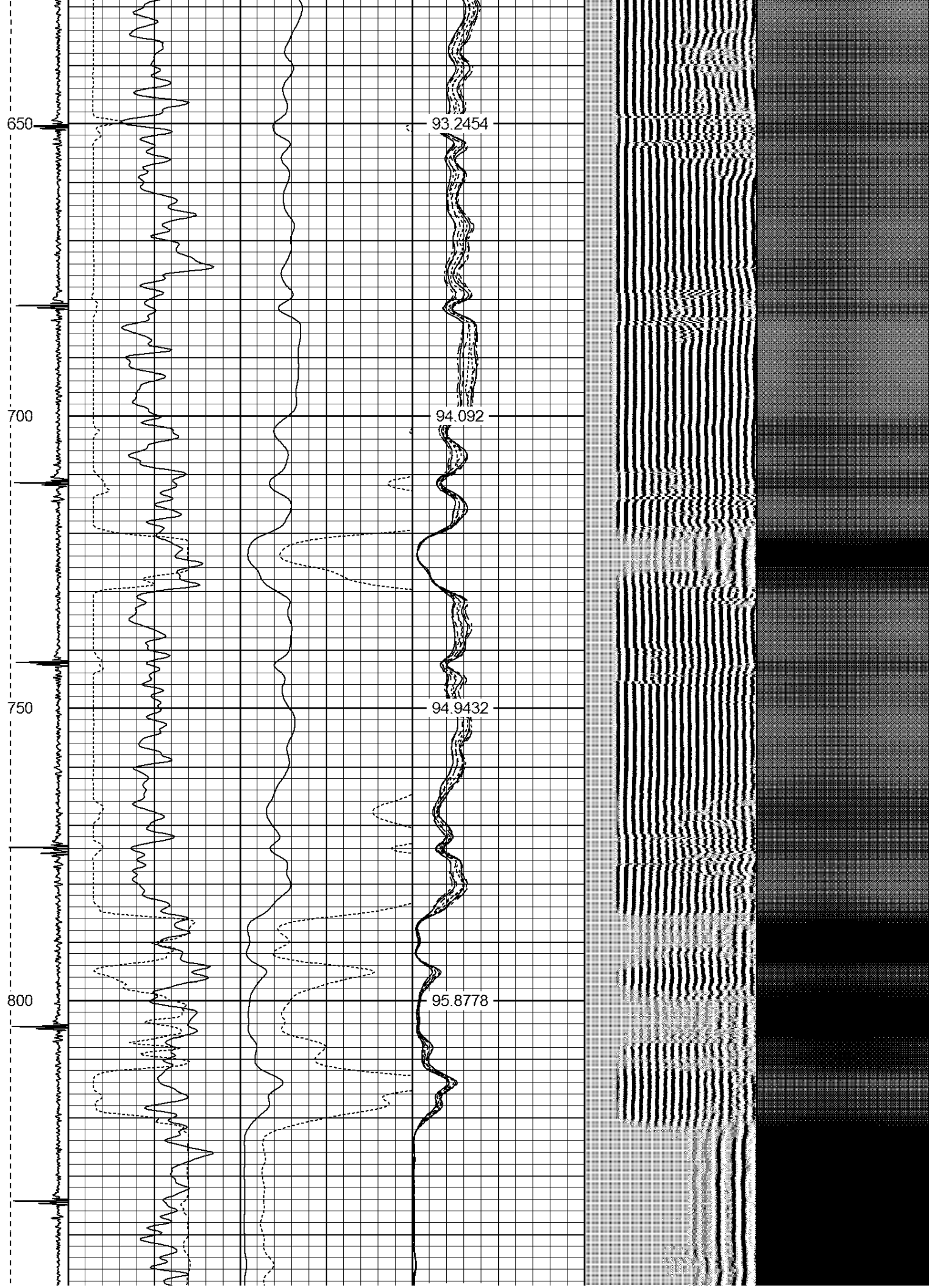
			PTS275	2.83	2.75	
HEADVOLT	16.13					
IntTemp	14.71					
WVF3FT	11.46		RBT-Probe (Base)	8.92	2.75	90.00
WVFCAL	11.46		Probe Radii Bond Tool with Digital Telemetry			
WVFS1	11.46					
WVFS2	11.46					
WVFS3	11.46					
WVFS4	11.46					
WVFS5	11.46					
WVFS6	11.46					
WVFS7	11.46					
WVFS8	11.46					
WVF5FT	10.46					
CNLSC	6.00		CNT-Probe_B (275)	2.88	2.75	40.00
CNSSC	5.17		6 bow centralizer			
CCL	3.64					
			GR-Probe (275)	4.33	2.75	30.00
			Probe 2.75"			
GR	0.90					
Dataset: suckla farms inc f unit 1.db: field/well/run1/pass2 Total Length: 19.96 ft Total Weight: 165.00 lb O.D. 2.75 in						

-9	CCL	1	200	TT (usec)	1000	0	AMP (mV)	100	0	AMPS1	100	200	VDL	1200	1	Cement Map	8
LSPD			0	GR (GAPI)	200	0	AMPx5 (mV)	20	0	AMPS2	100				100		1
(ft/min)			200	GR (GAPI)	400				0	AMPS3	100						
0	250								0	AMPS4	100						
									0	AMPS5	100						
									0	AMPS6	100						
									0	AMPS7	100						
									0	AMPS8	100						
										IntTemp							
										(degF)							

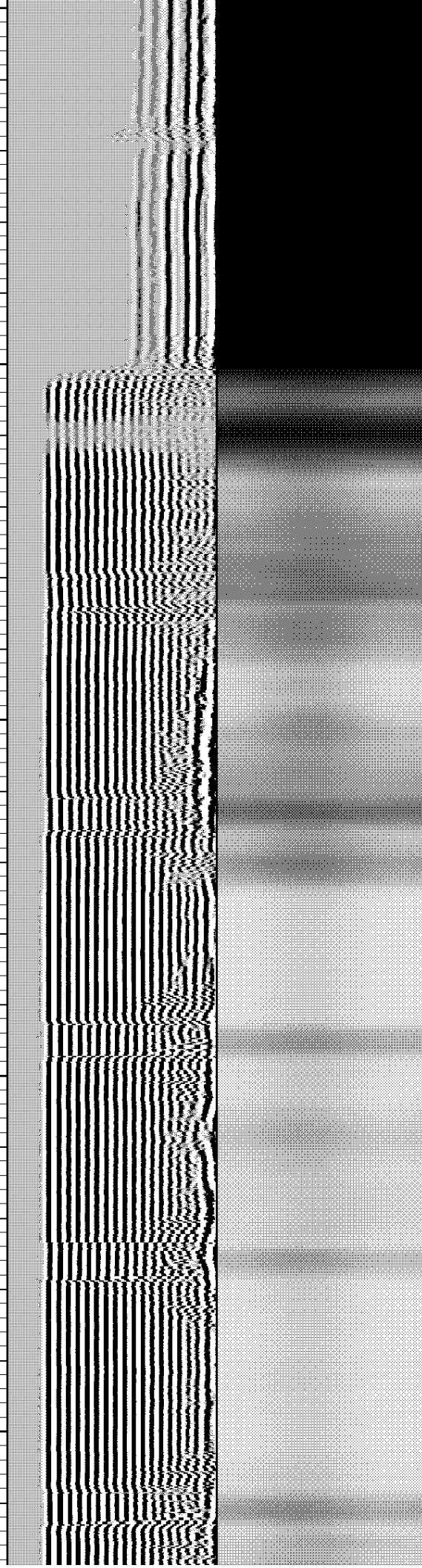
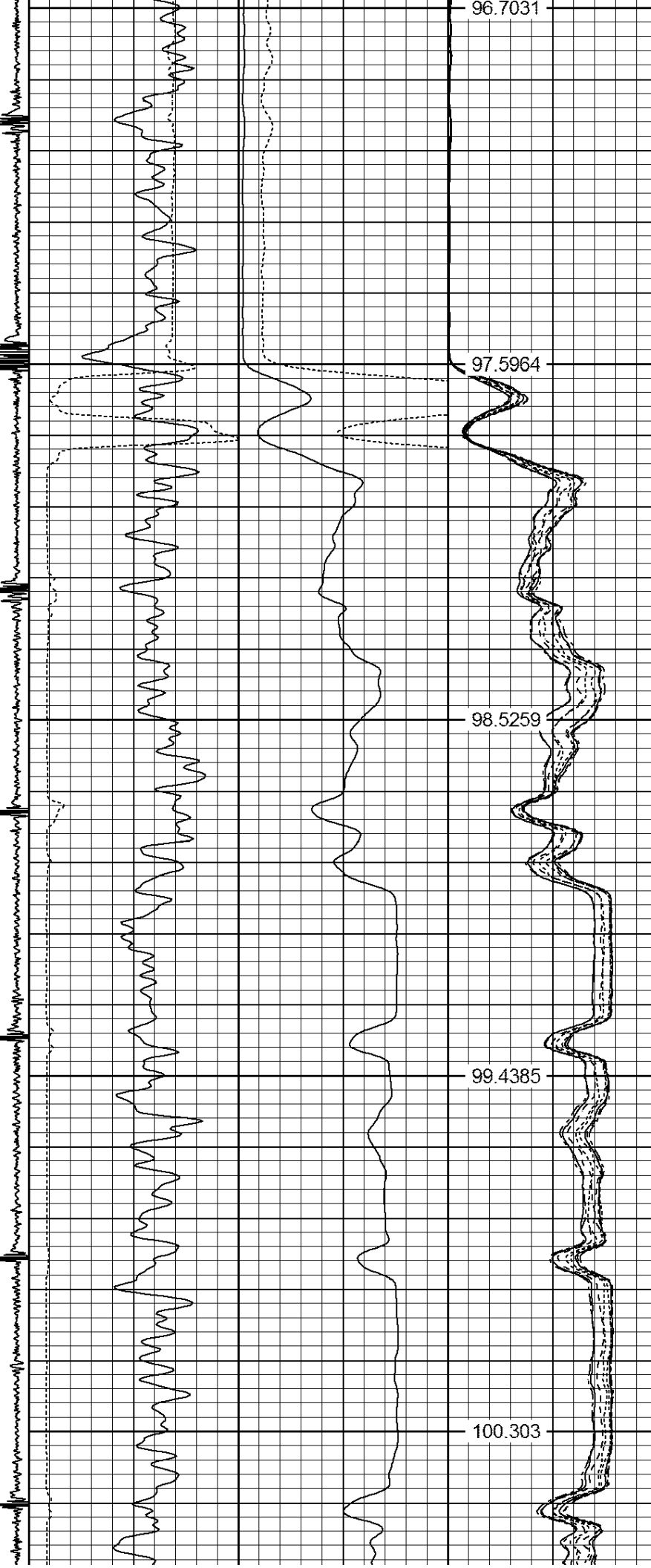


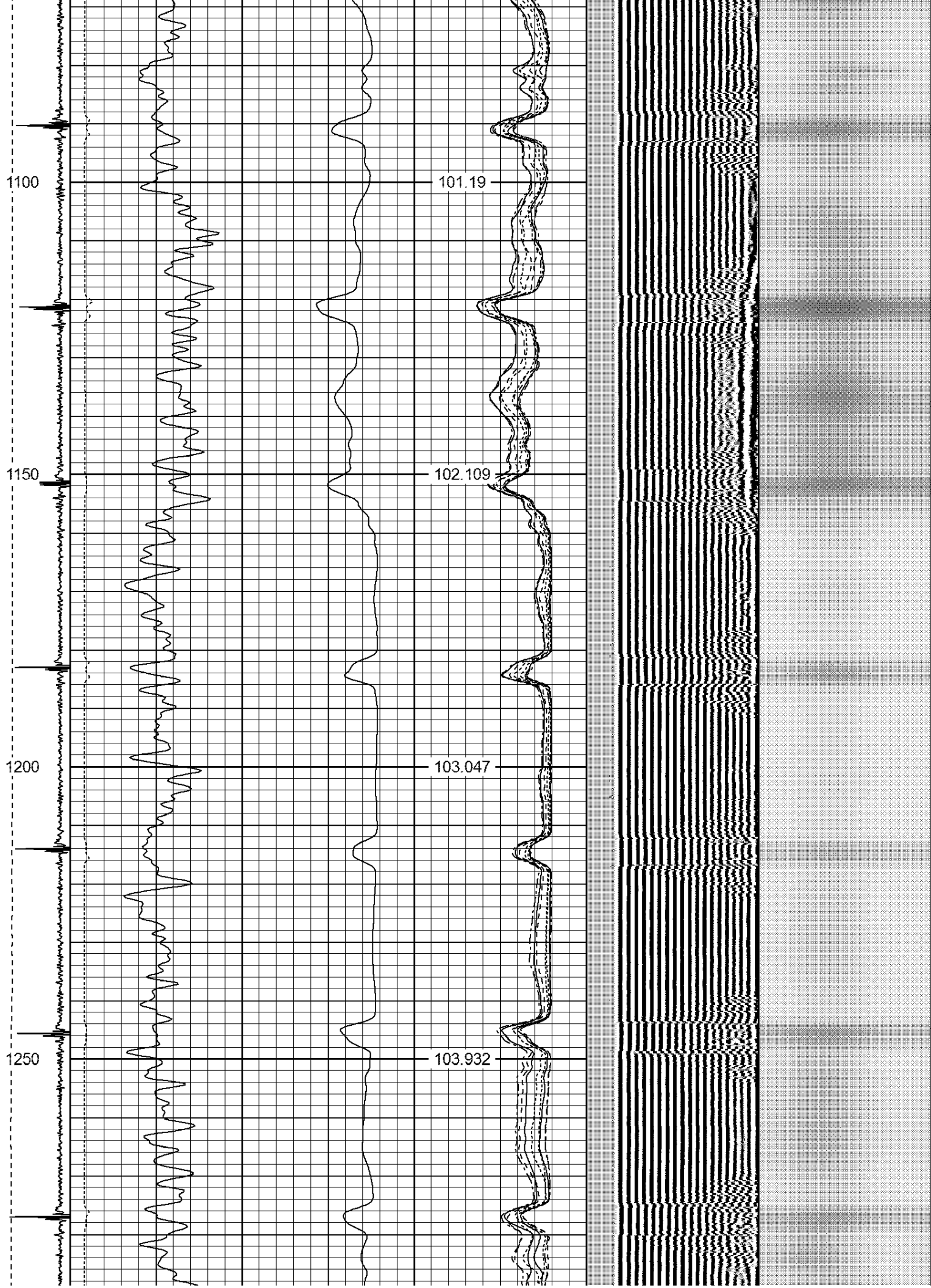


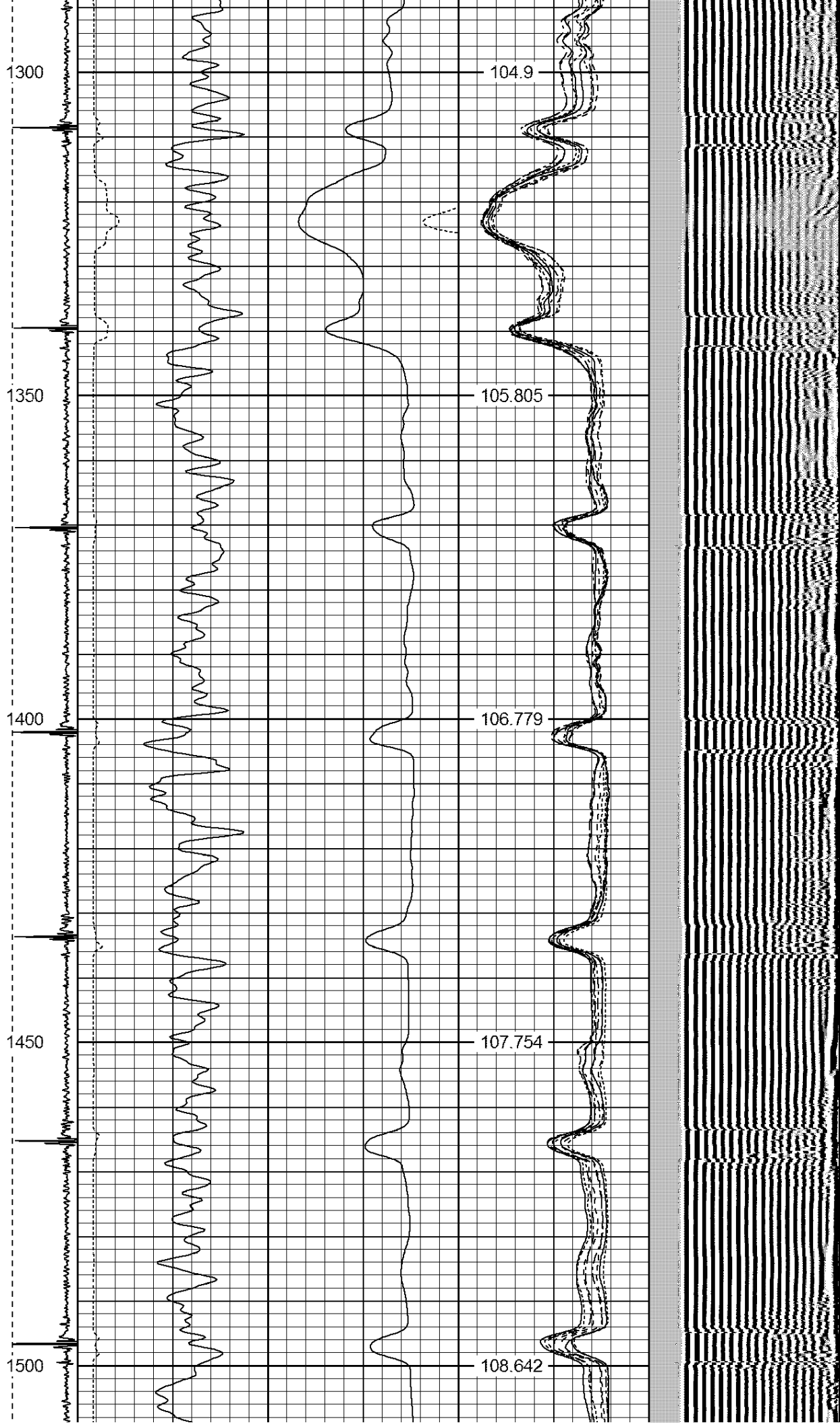


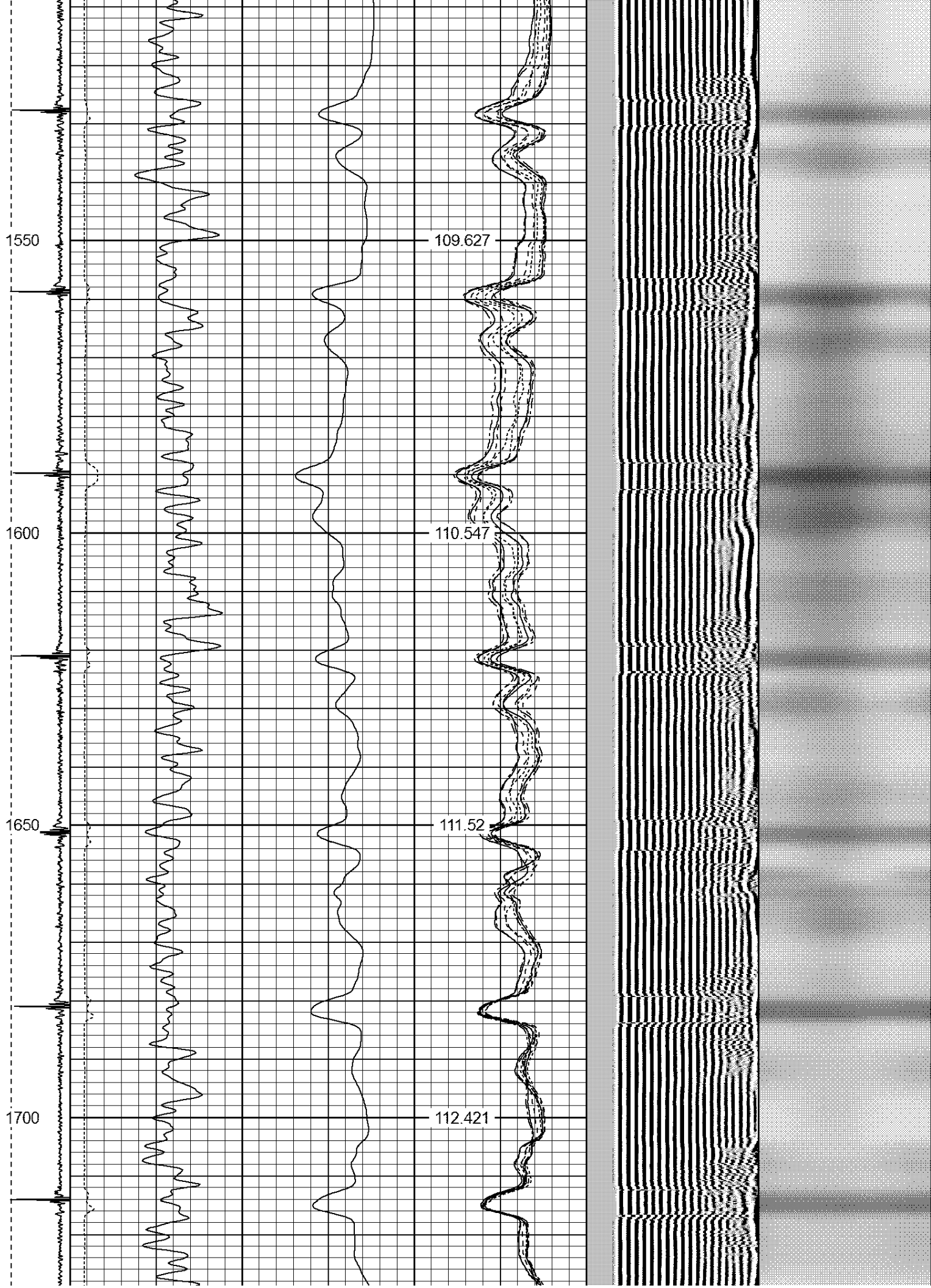


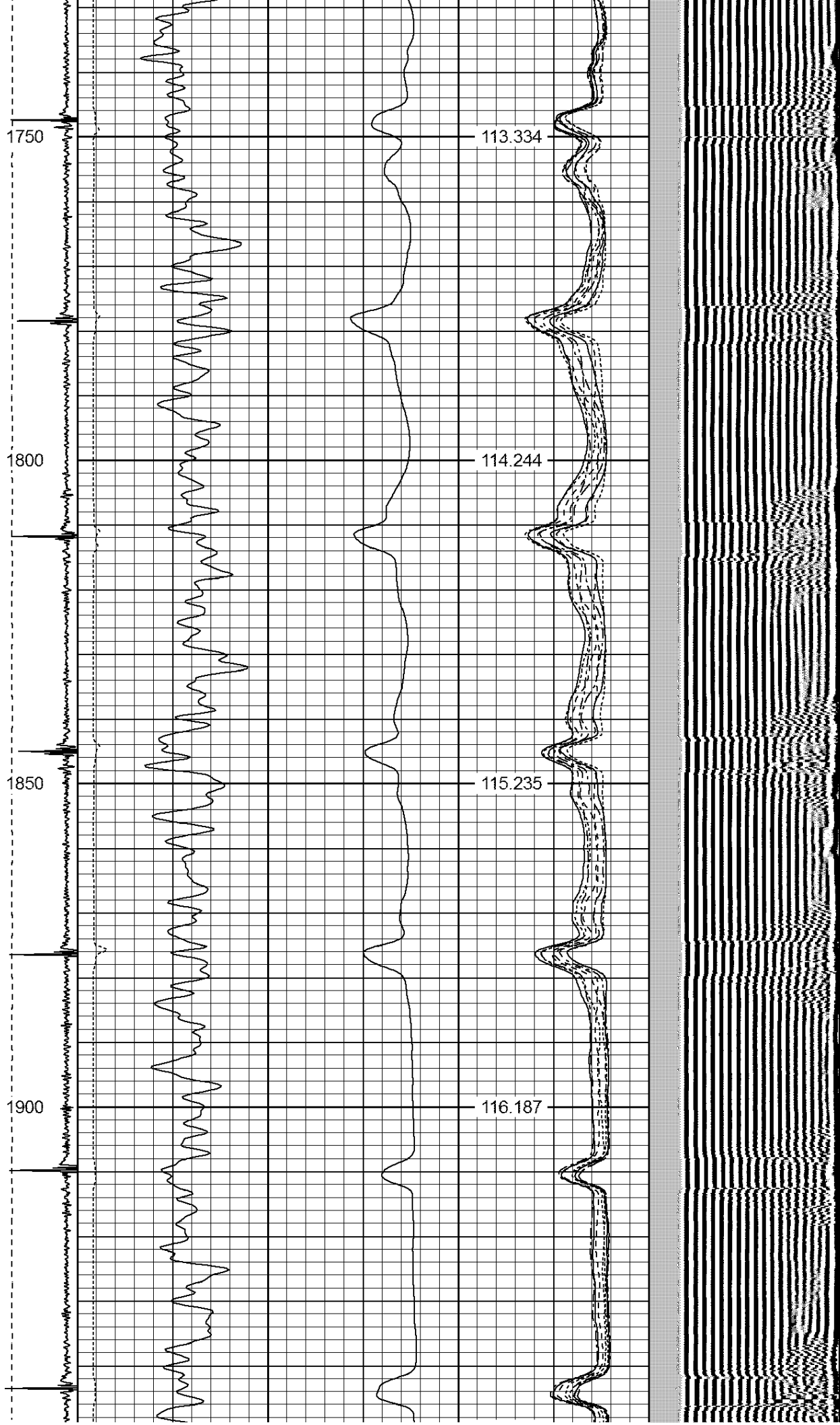
850
900
950
1000
1050

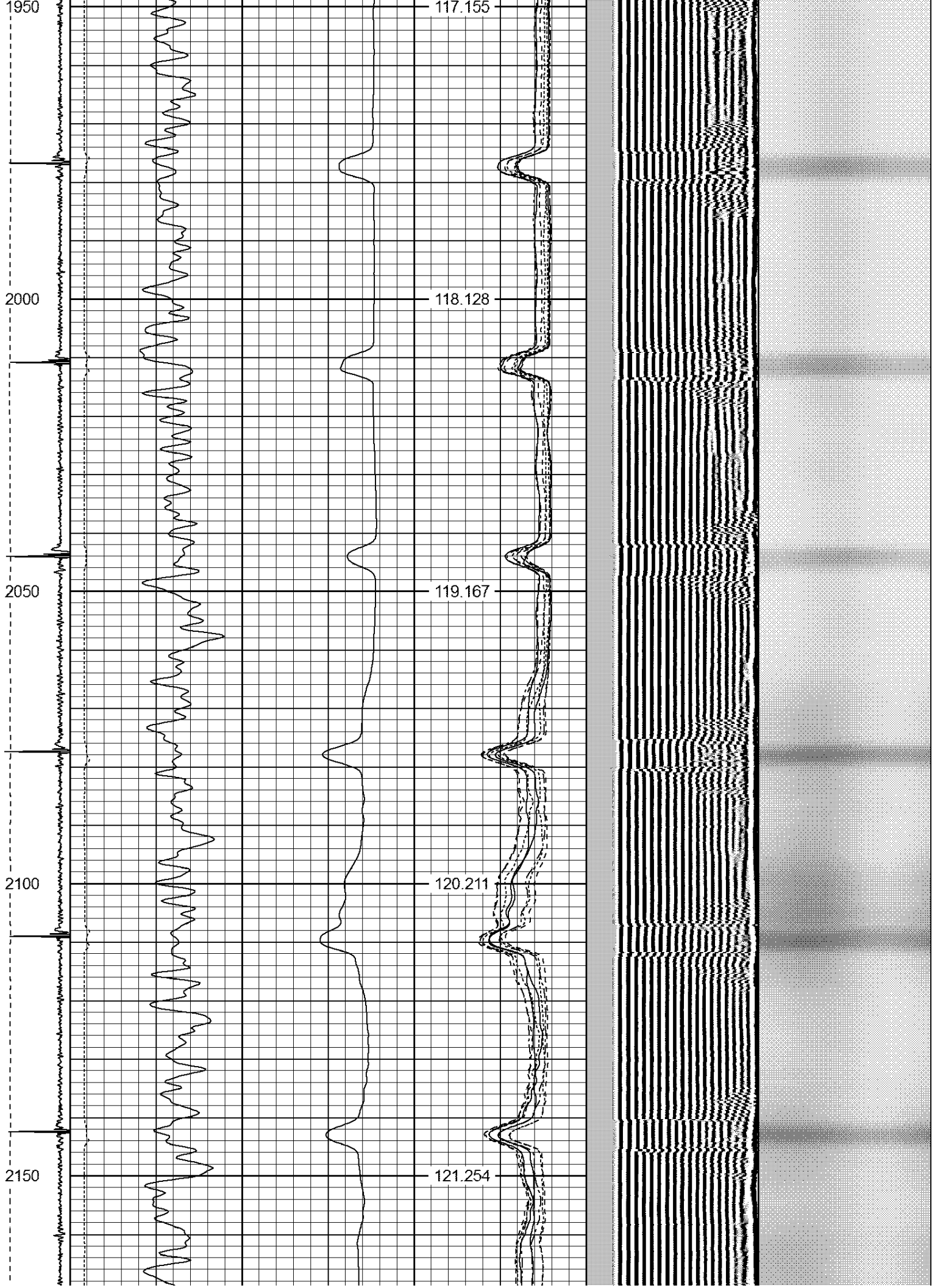


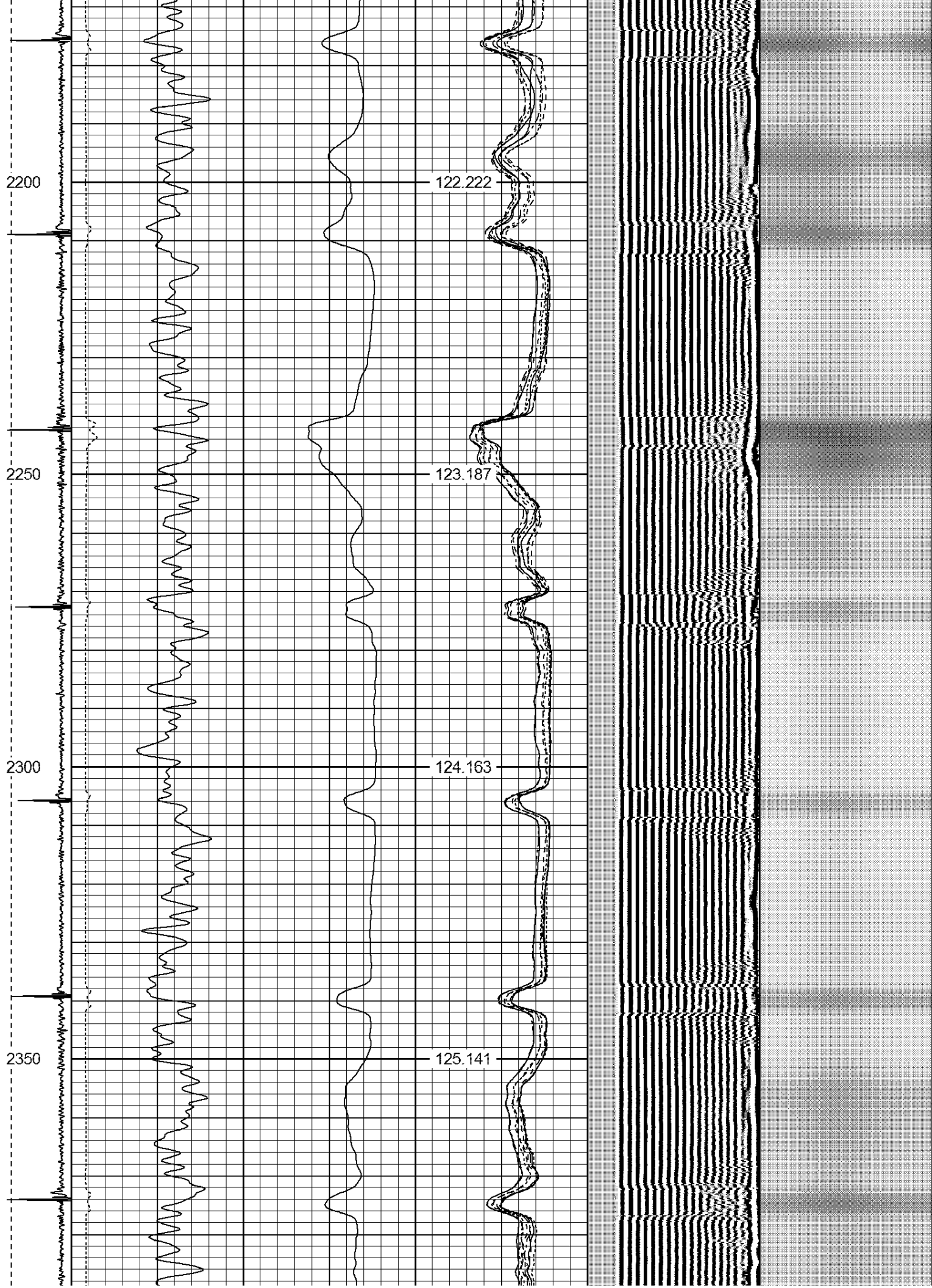












2400

126.155

2450

127.157

2500

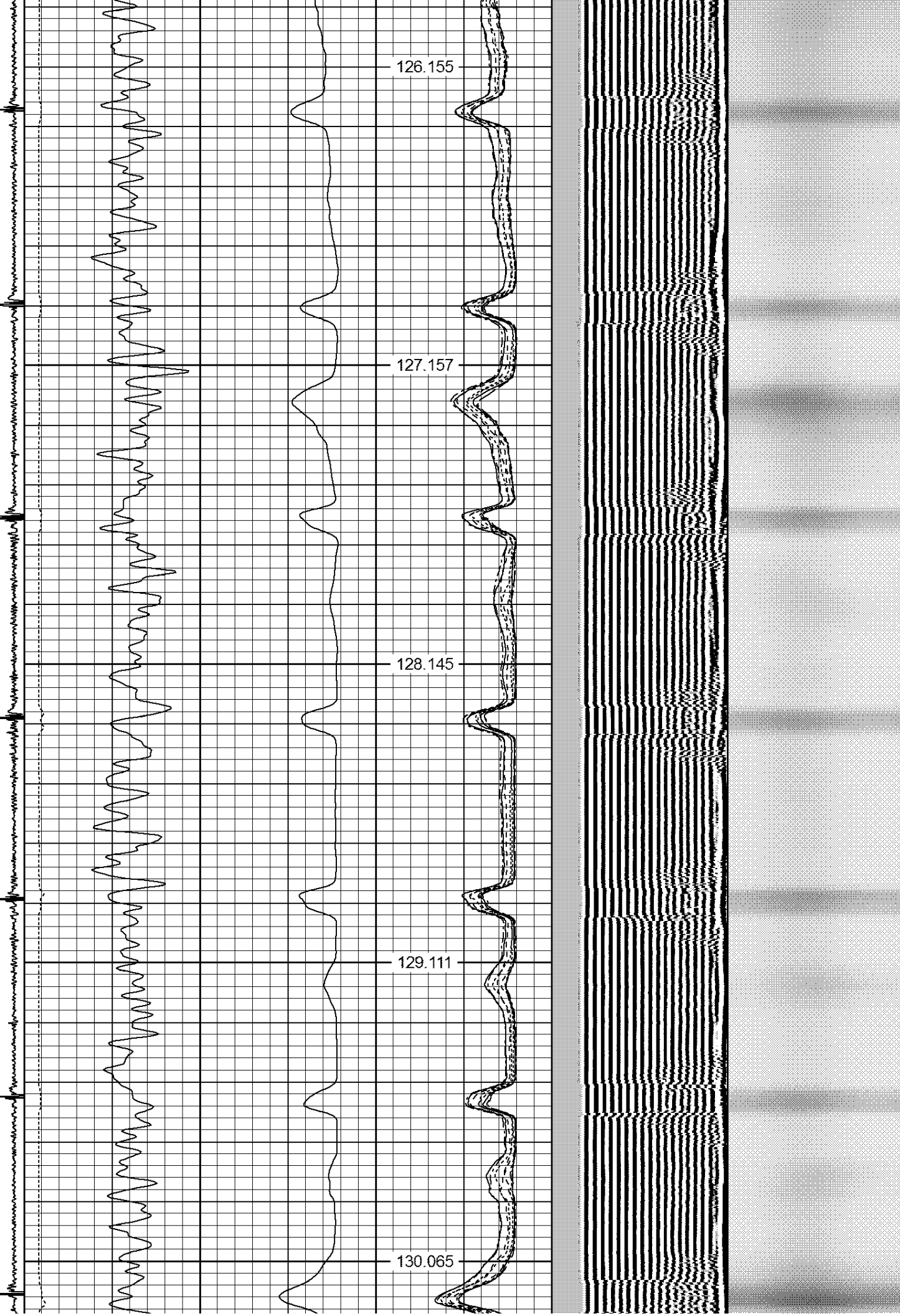
128.145

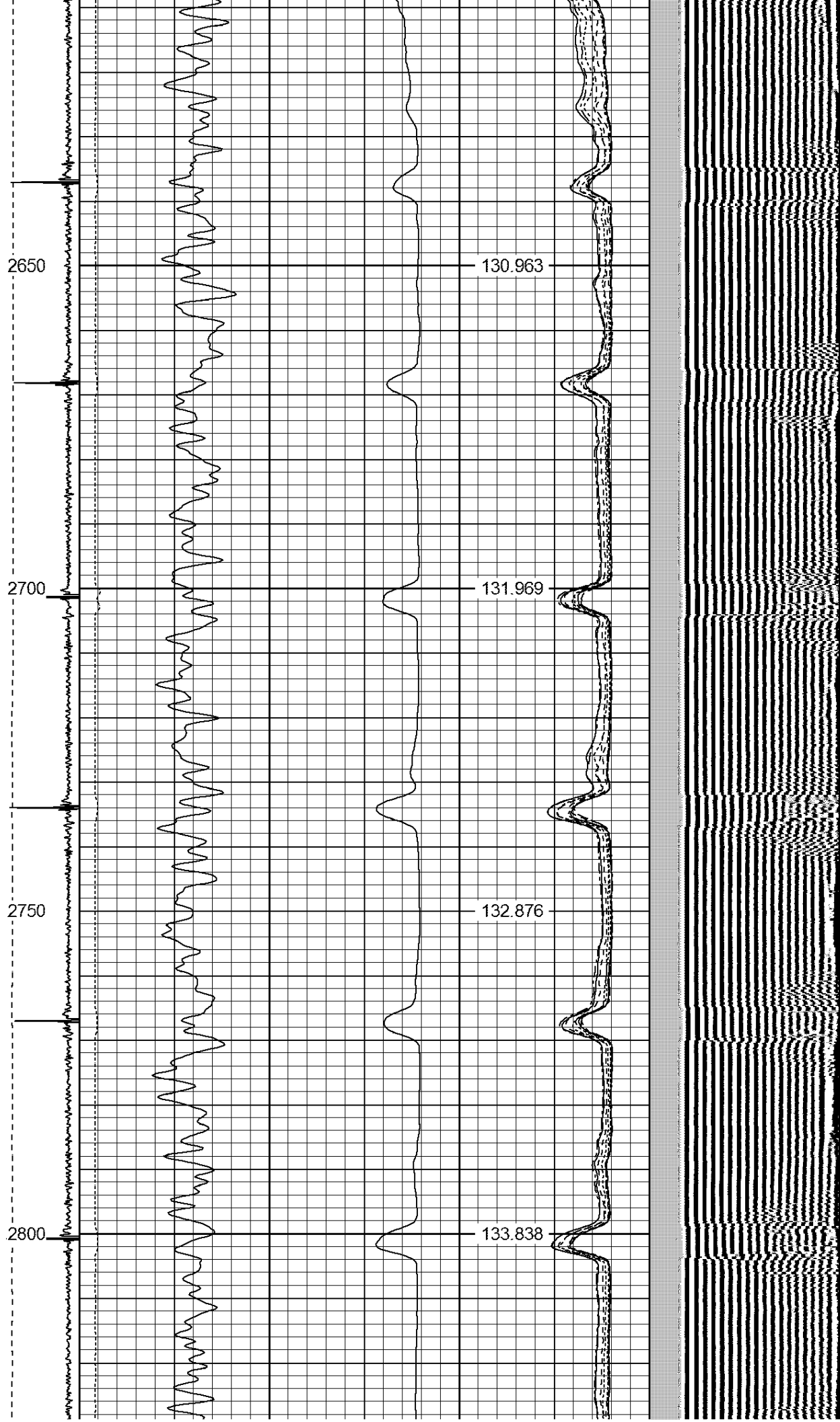
2550

129.111

2600

130.065





2850

134.856

2900

135.817

2950

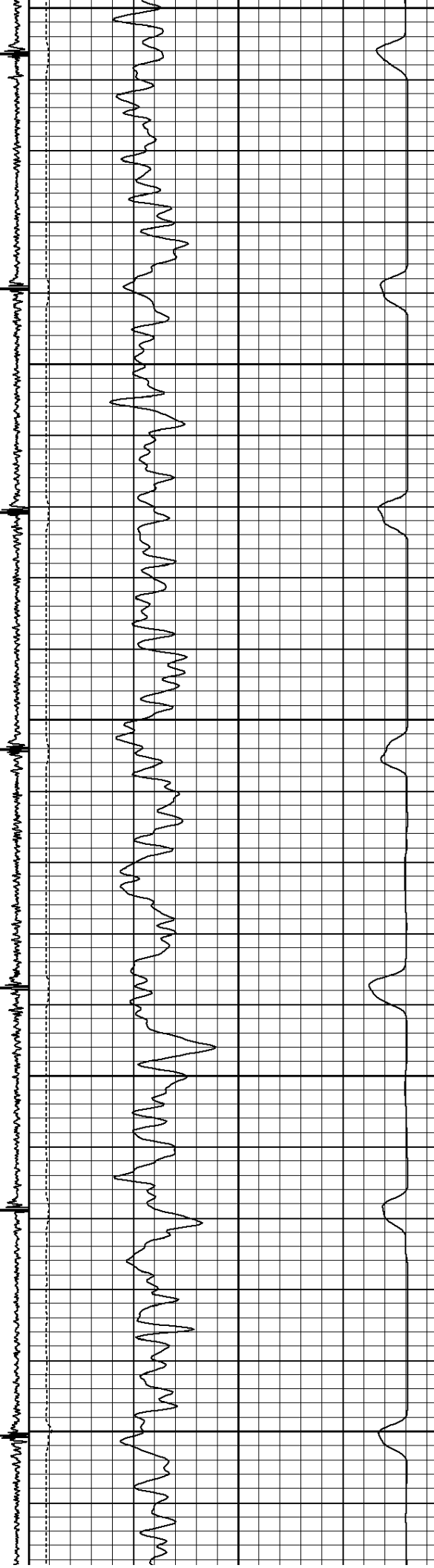
136.715

3000

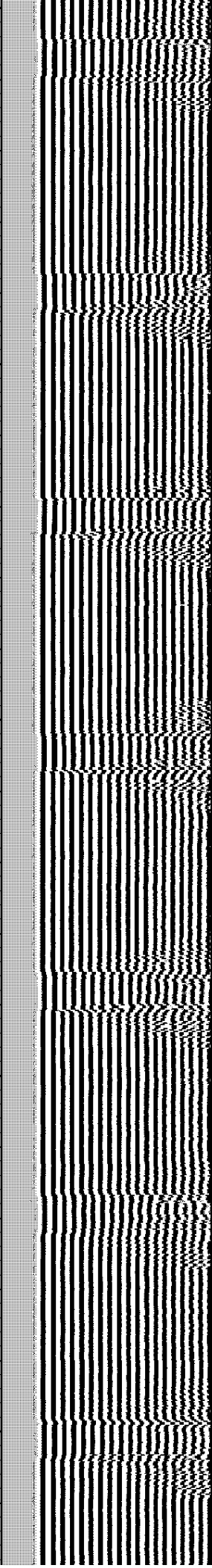
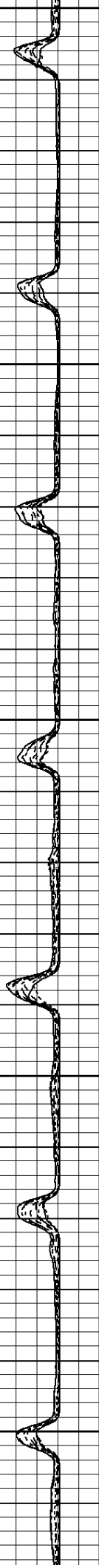
137.632

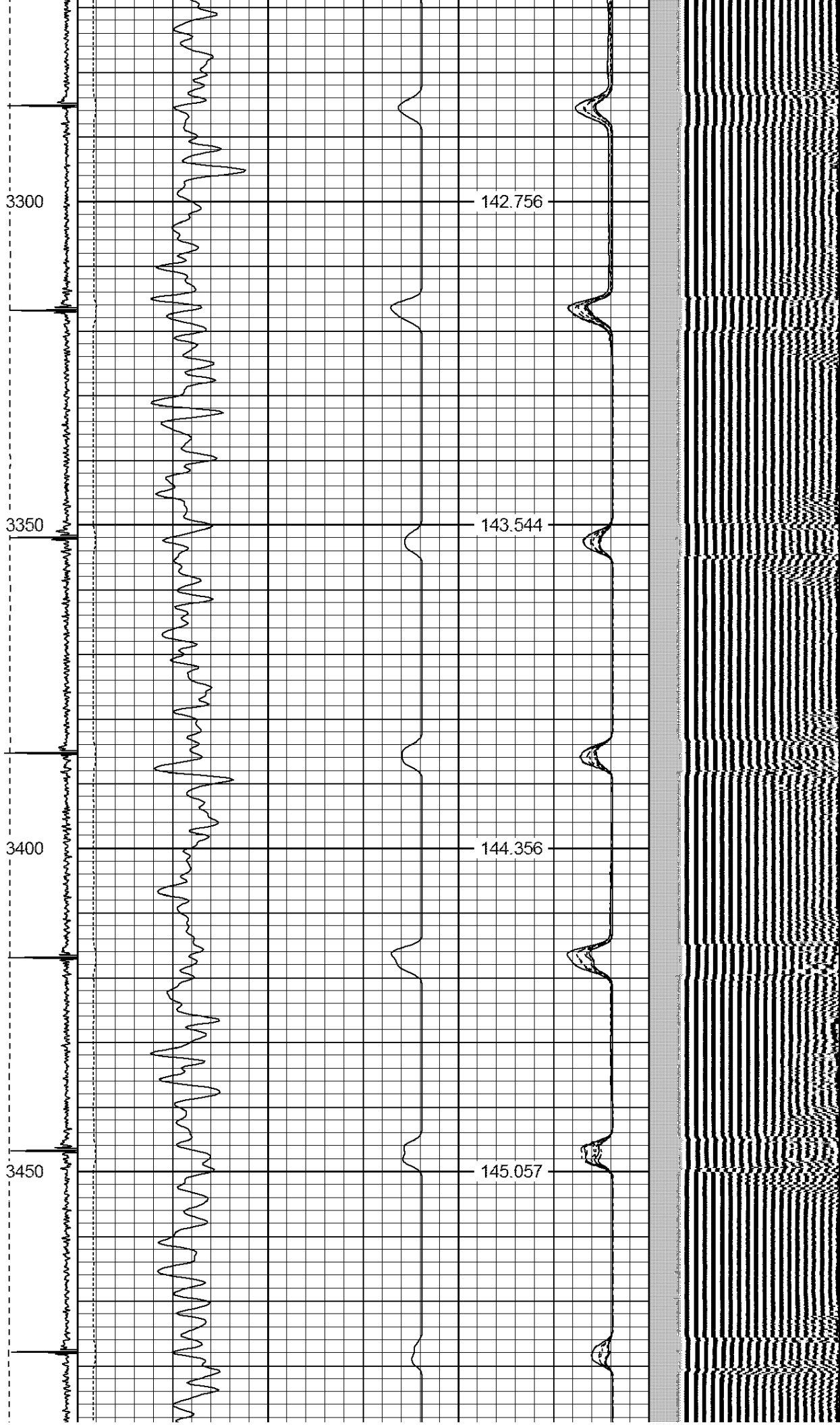


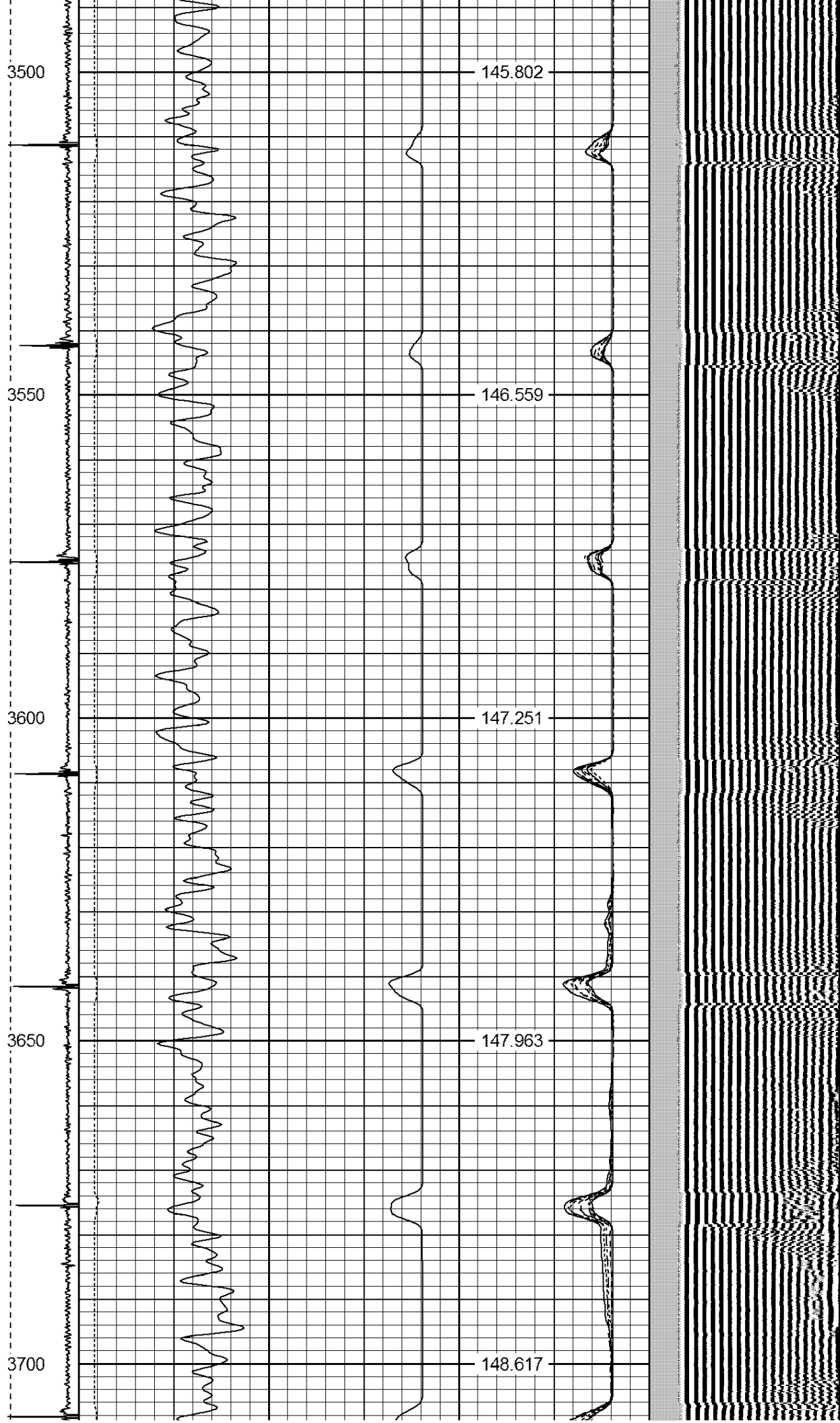
3050
3100
3150
3200
3250

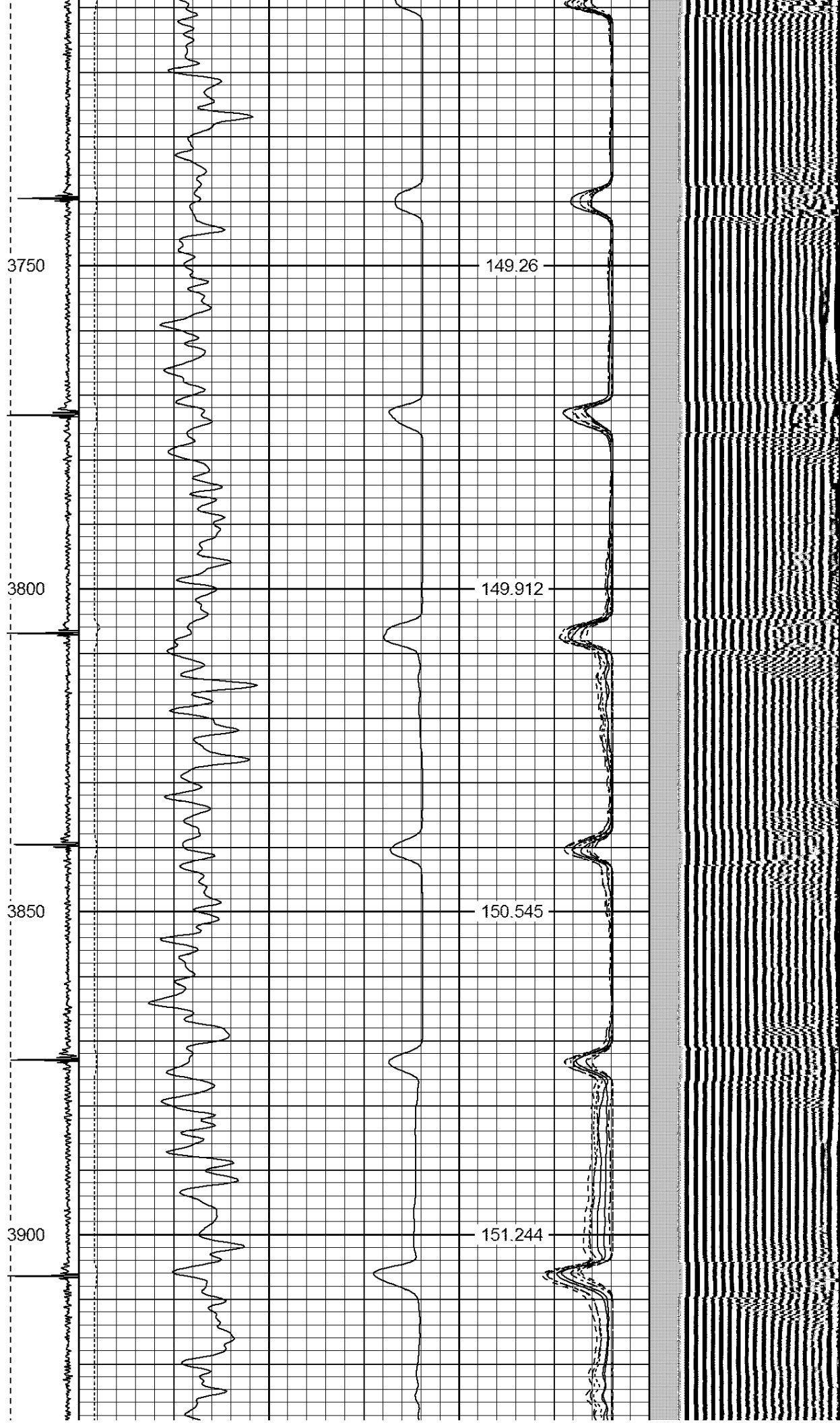


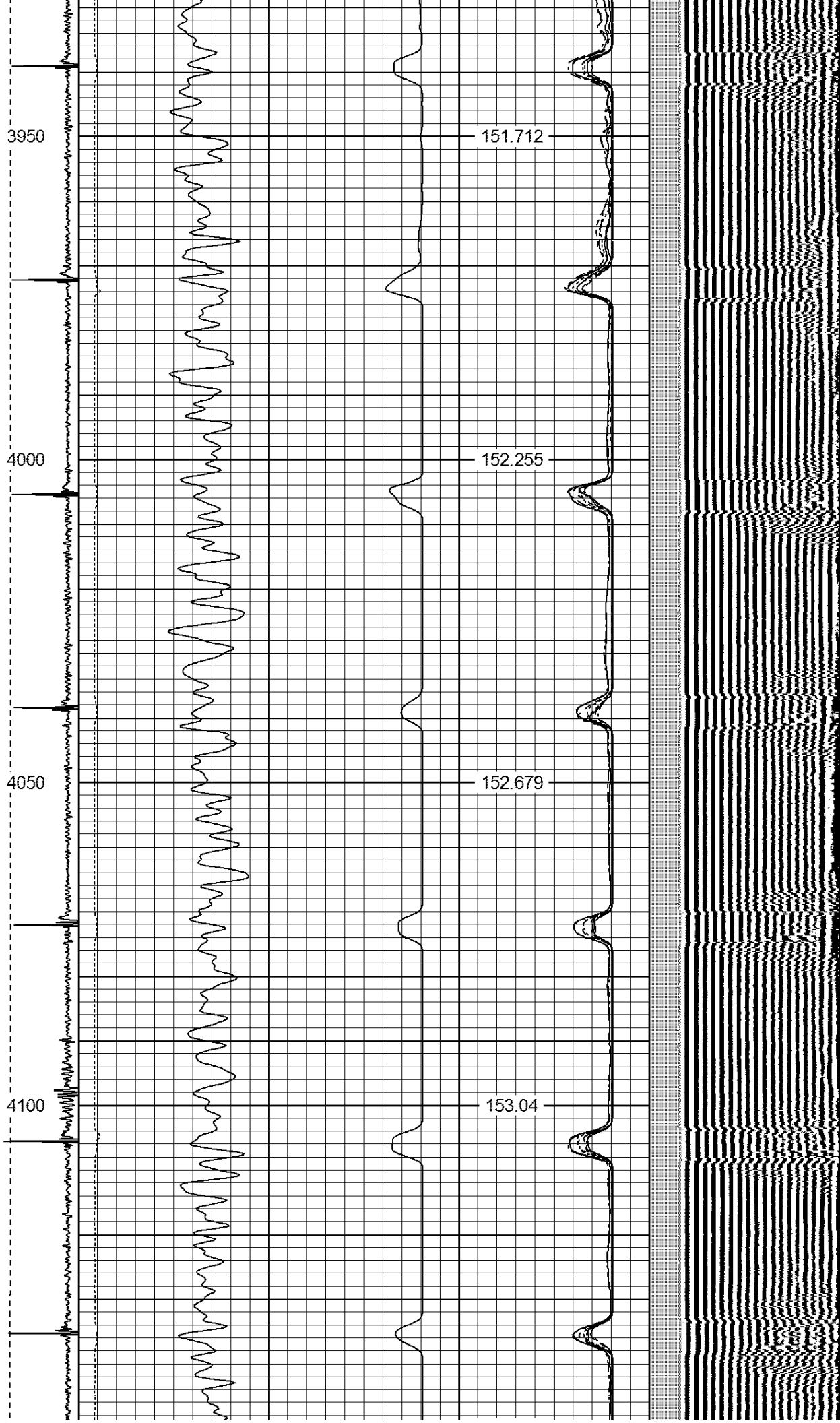
138.552
139.56
140.353
141.152
141.976

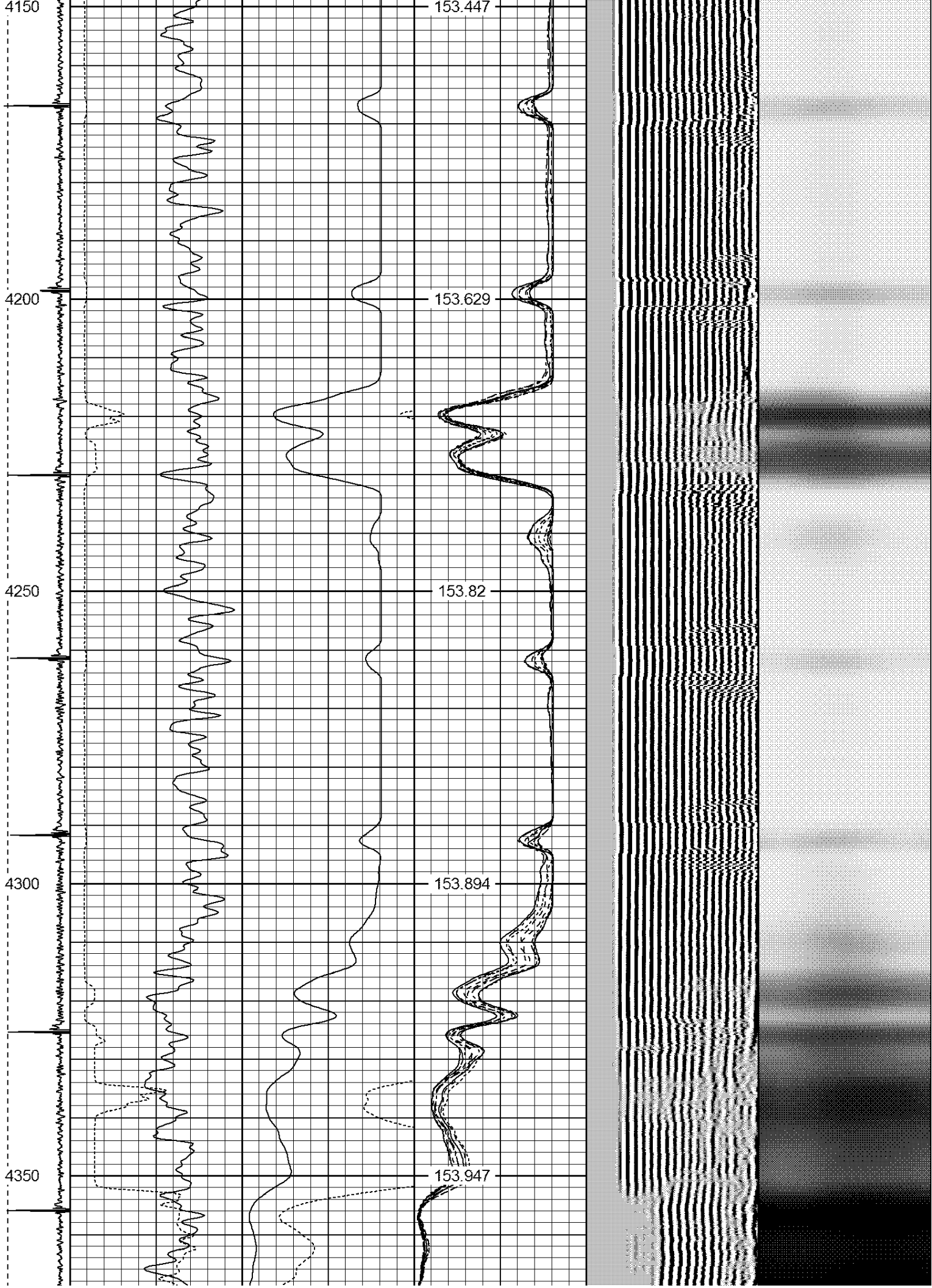


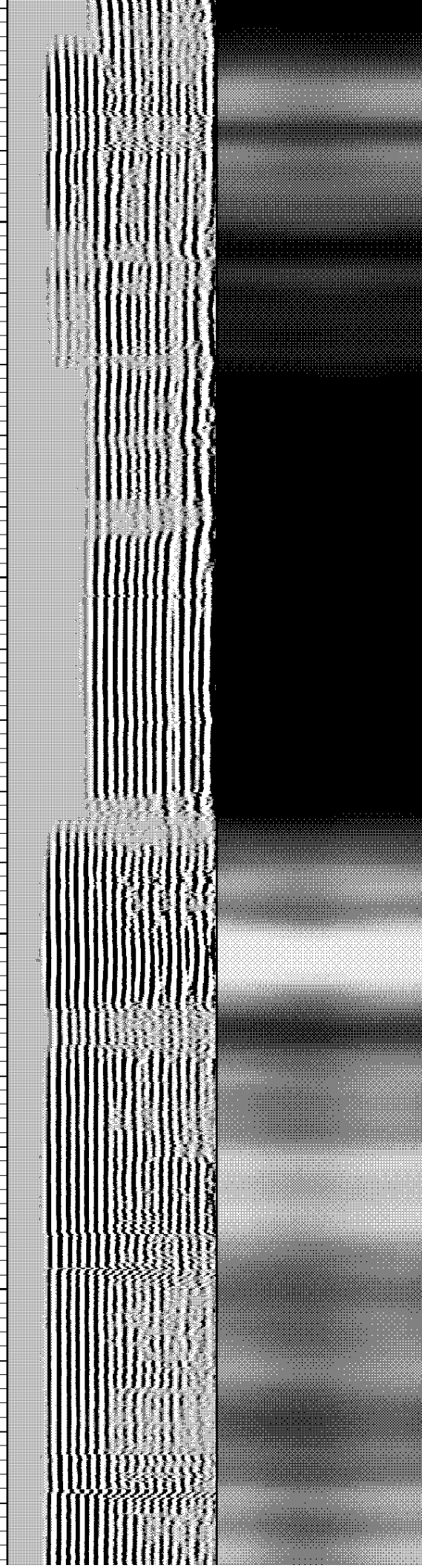
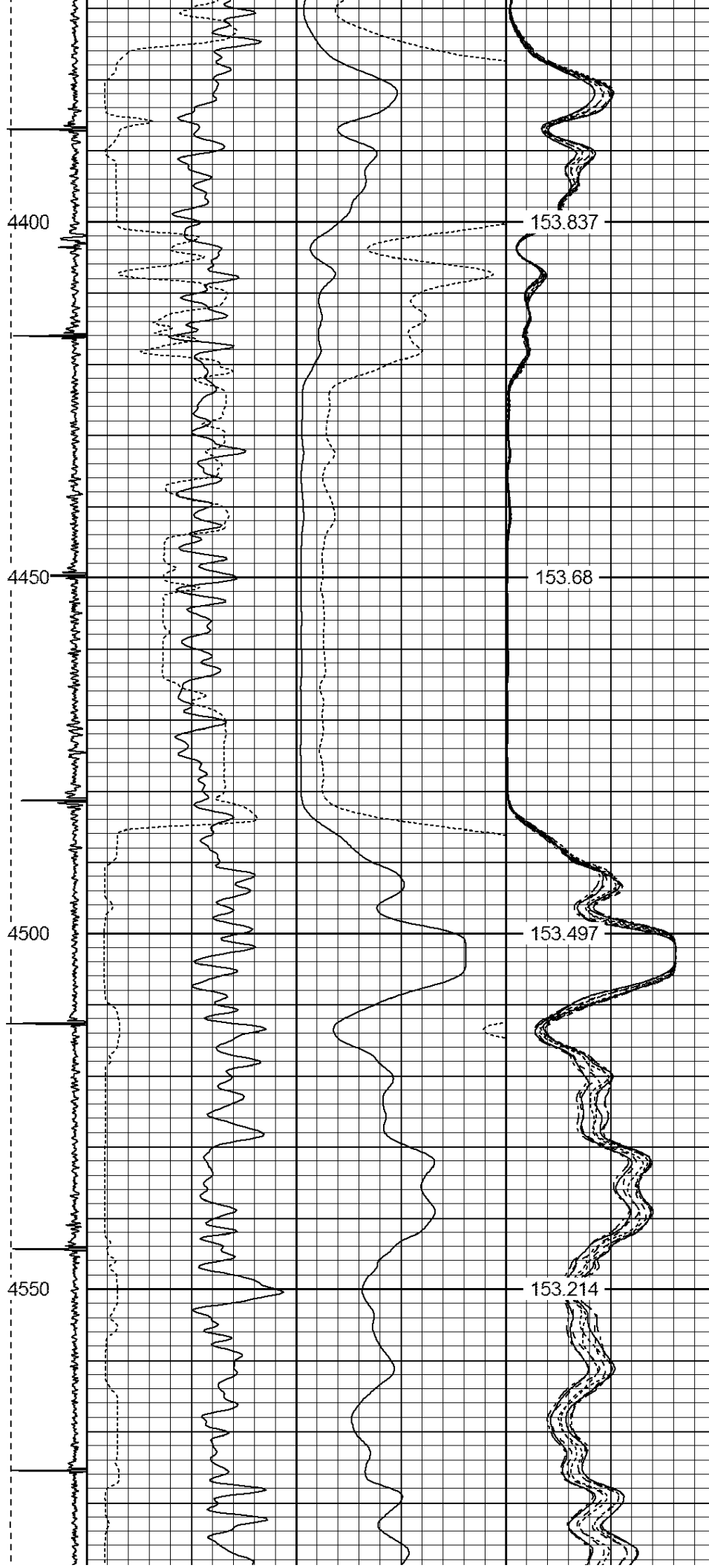


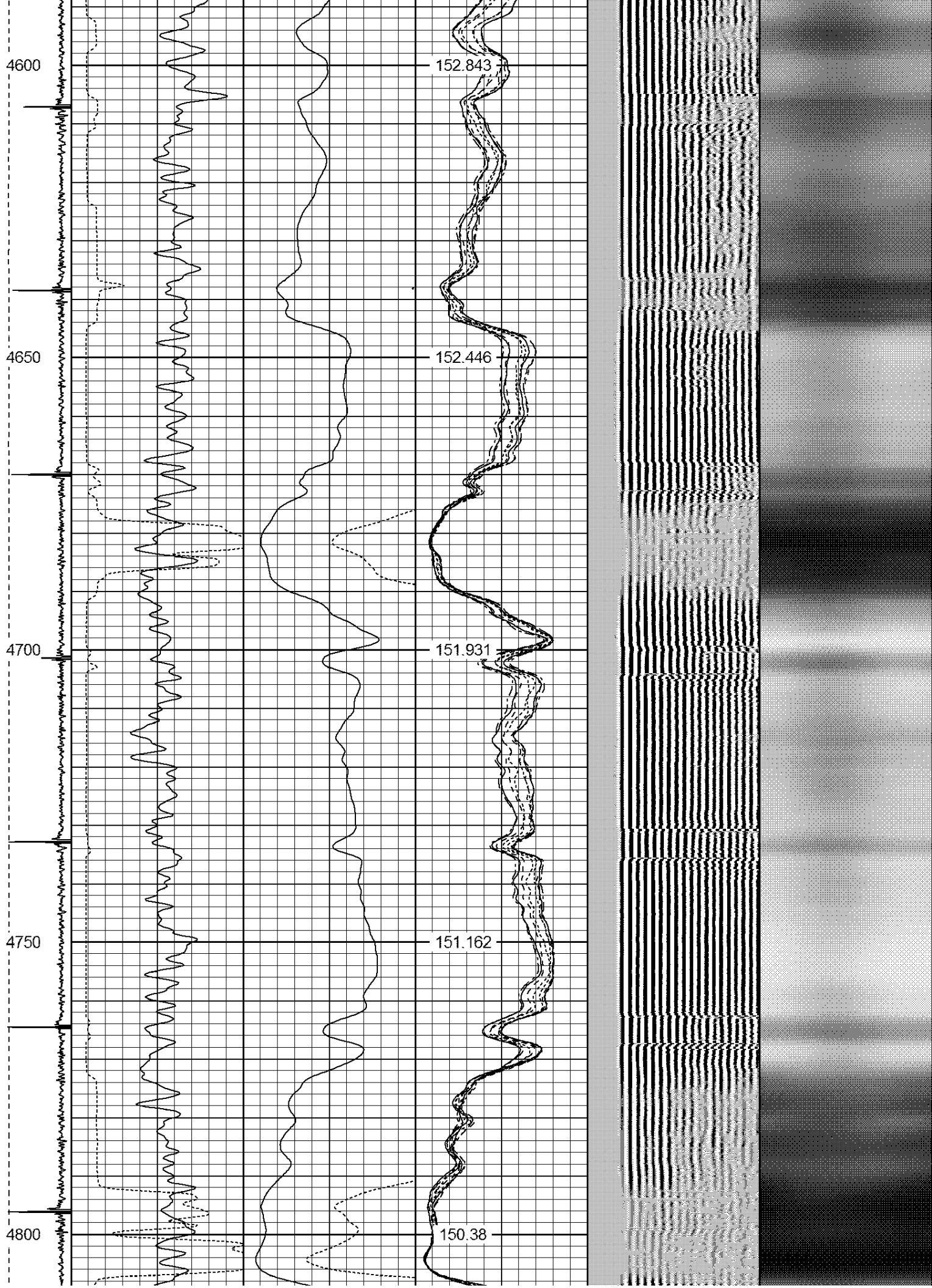


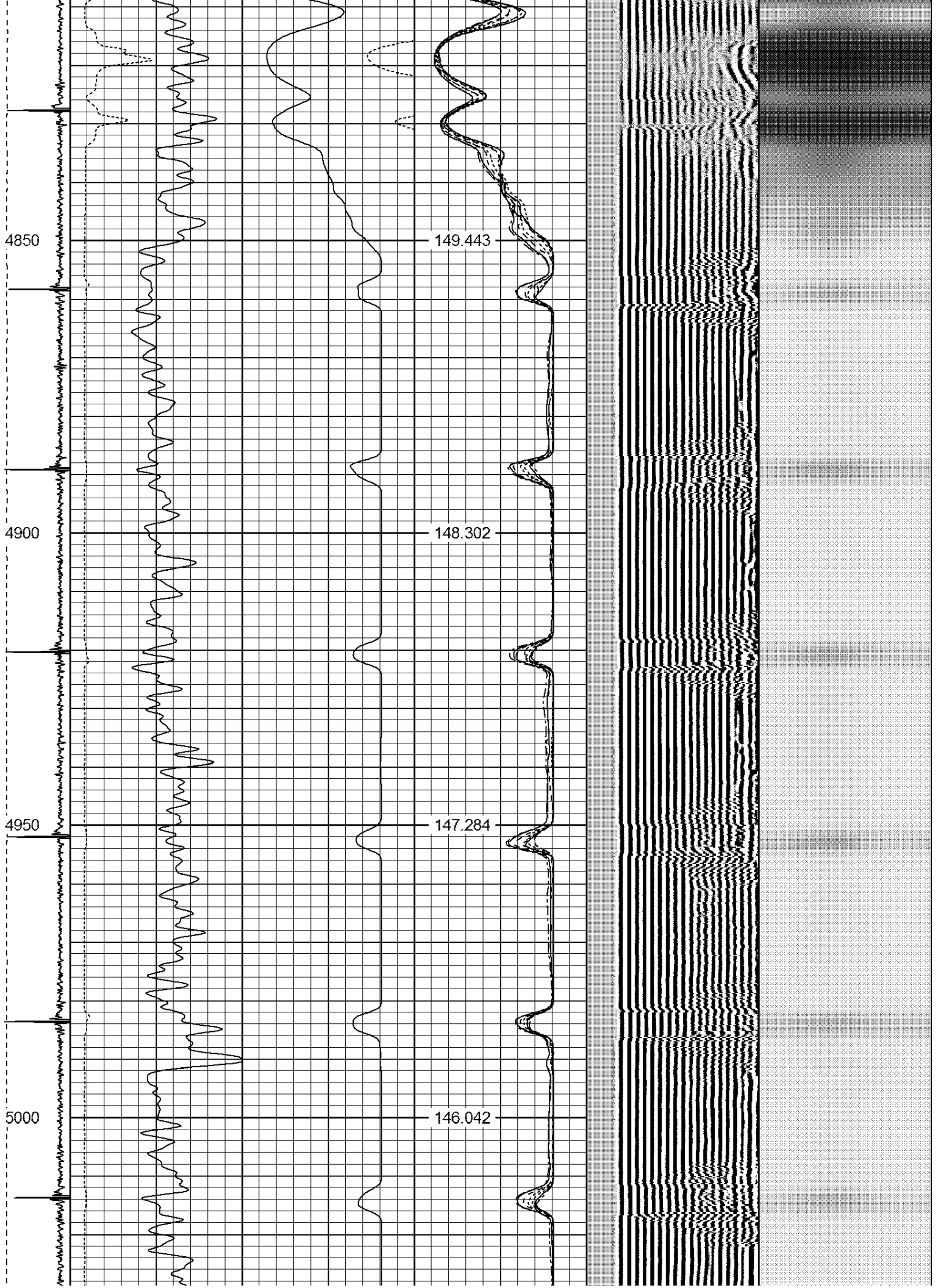


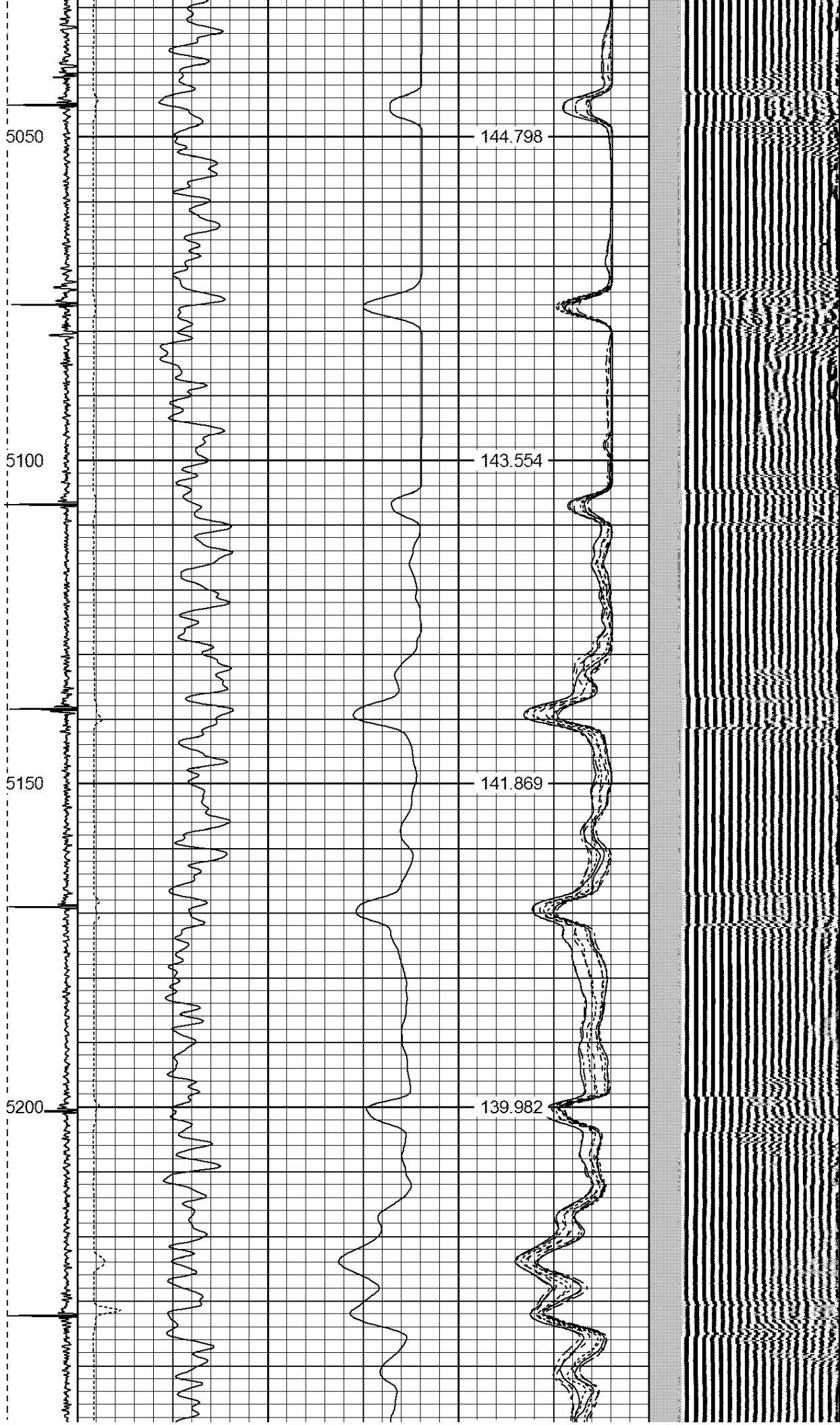


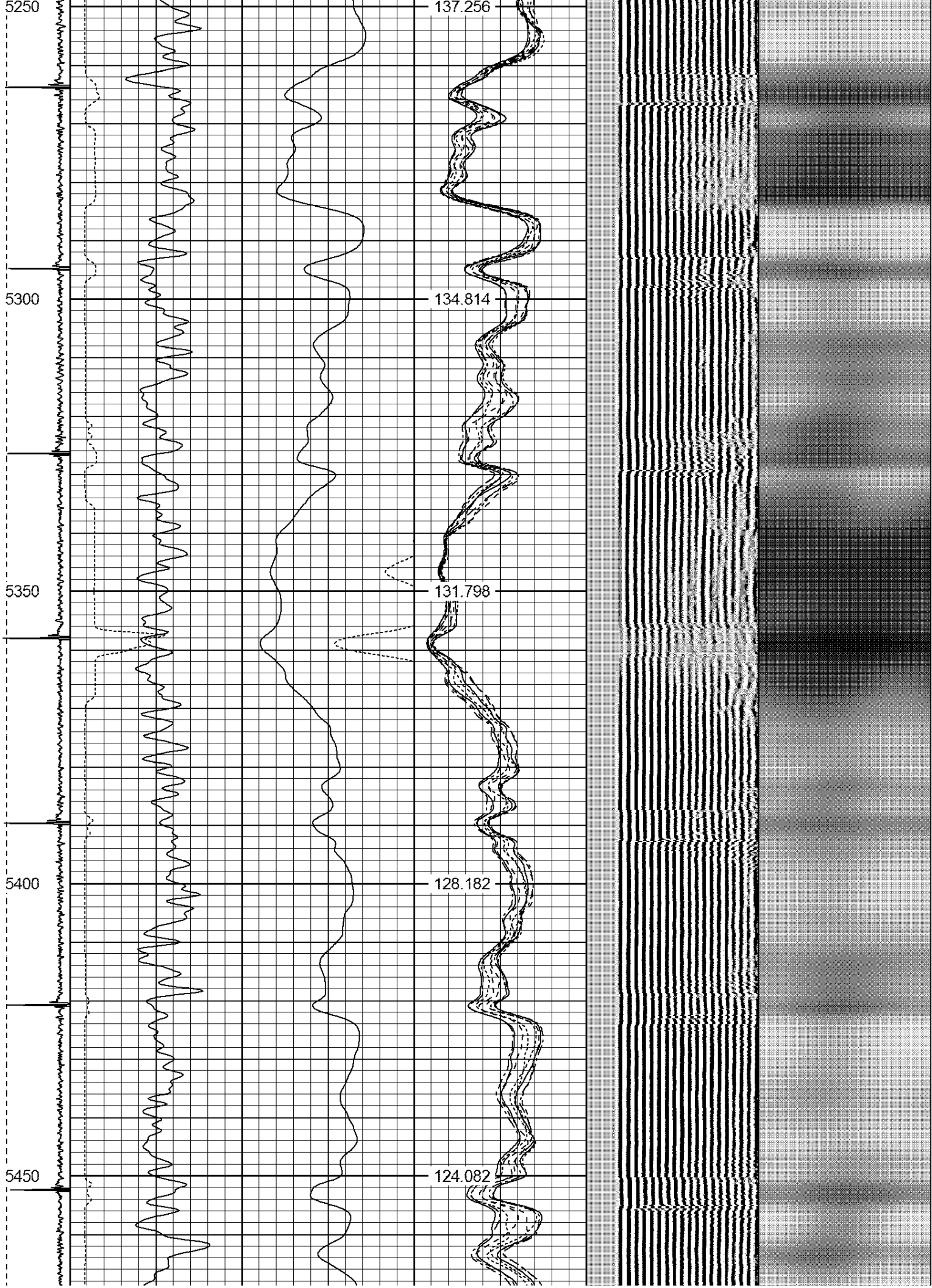


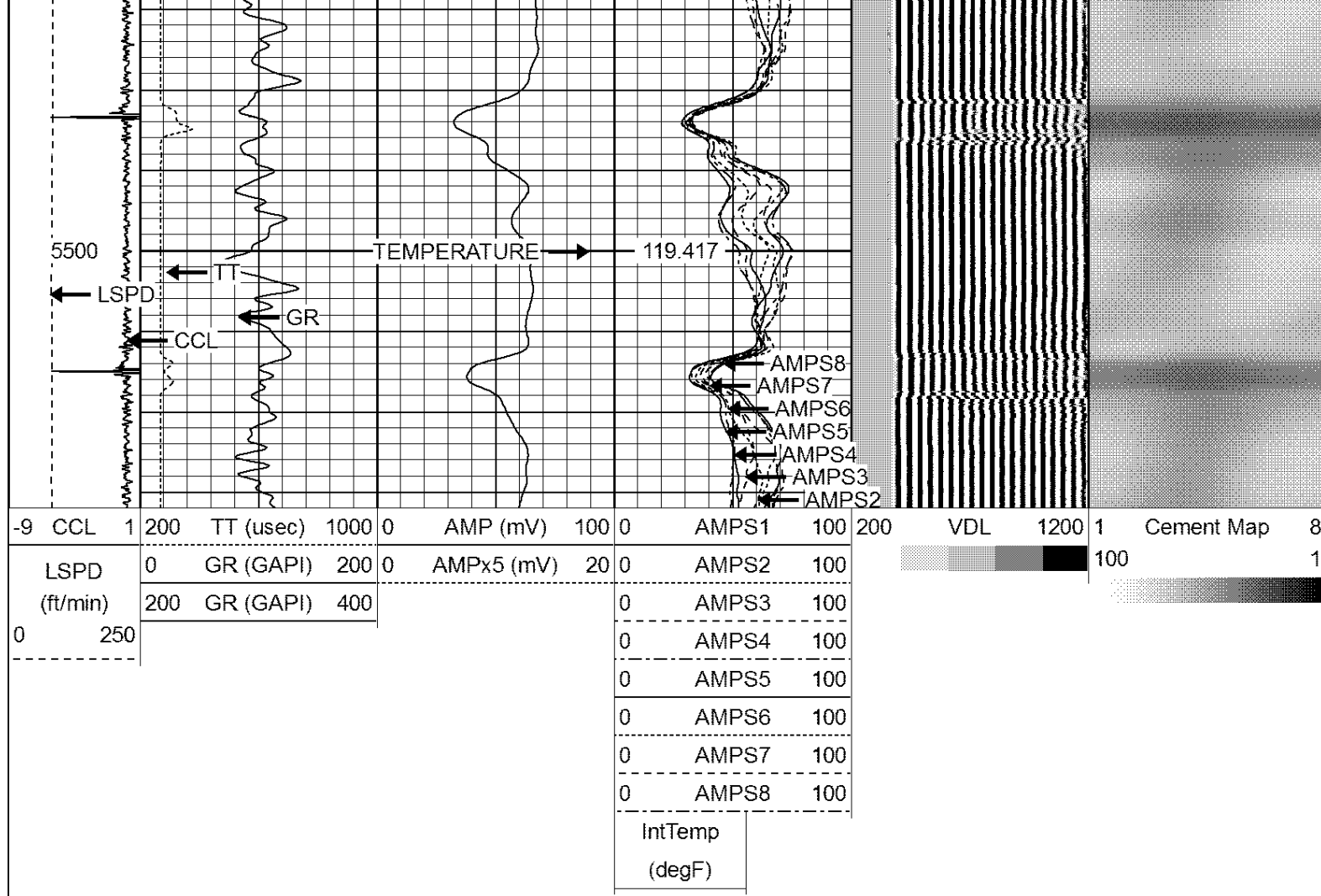












Calibration Report

Database File: suckla farms inc f unit 1.db
 Dataset Pathname: pass2
 Dataset Creation: Tue Jan 05 19:30:47 2016 by Log 7.0 B1

Gamma Ray Calibration Report

Serial Number: 275
 Tool Model: Probe
 Performed: Tue Sep 23 07:13:12 2014

Calibrator Value: 100.0 GAPI

Background Reading: 35.0 cps
 Calibrator Reading: 160.0 cps

Sensitivity: 1.0000 GAPI/cps

Compensated Neutron Calibration Report

Serial Number: 275
 Tool Model: Probe_B

CALIBRATION

Wed Jul 30 08:47:19 2008

Detector	Readings	Target	Normalization
Short Space	5001.20 cps	0.00 cps	1.0000
Long Space	1029.31 cps	0.00 cps	1.0000

PRE-SURVEY VERIFICATION

	Detector	Readings	Measured	Target
1)	Short Space	cps		
	Long Space	cps	pu	pu
2)	Short Space	cps		
	Long Space	cps	pu	
3)	Short Space	cps		
	Long Space	cps	pu	

POST-SURVEY VERIFICATION				
	Detector	Readings	Measured	Target
1)	Short Space	cps		
	Long Space	cps	pu	pu
2)	Short Space	cps		
	Long Space	cps	pu	pu
3)	Short Space	cps		
	Long Space	cps	pu	pu

Segmented Cement Bond Log Calibration Report

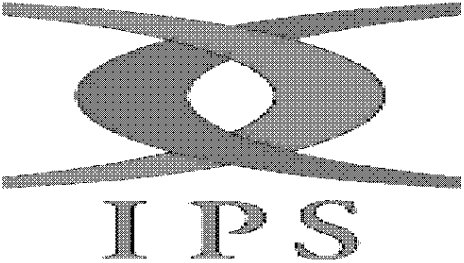
Serial Number:	Base	
Tool Model:	Probe	
Calibration Casing Diameter:	4.500	in
Calibration Depth:	119.550	ft

Master Calibration, performed Tue Jan 05 19:20:21 2016:						
	Raw (v)		Calibrated (mv)		Results	
	Zero	Cal	Zero	Cal	Gain	Offset
3'	0.003	2.500	2.000	81.196	31.713	1.915
CAL	1.454	2.455				
5'	0.003	2.500	2.000	81.196	31.712	1.916
SUM						
S1	0.005	2.500	0.500	81.000	32.269	0.328
S2	0.004	2.500	0.500	81.000	32.246	0.385
S3	0.005	2.500	0.500	81.000	32.258	0.354
S4	0.004	2.484	0.500	81.000	32.456	0.371
S5	0.003	2.495	0.500	81.000	32.305	0.412
S6	0.004	2.500	0.500	81.000	32.256	0.359
S7	0.007	2.500	0.500	81.000	32.285	0.286
S8	0.005	2.500	0.500	81.000	32.267	0.331

Internal Reference Calibration, performed Tue Jun 05 07:53:42 2012:						
	Raw (v)		Calibrated (v)		Results	
	Zero	Cal	Zero	Cal	Gain	Offset
CAL	0.000	0.000	1.454	2.455	1.000	0.000

Air Zero Calibration, performed Tue Jan 05 19:16:57 2016:						
	Raw (v)		Calibrated (v)		Results	
	Zero		Zero		Offset	
3'	0.000		0.000		0.000	
5'	0.000		0.000		0.000	

SUM	0.000	0.000	0.000
S1	0.000	0.000	0.000
S2	0.000	0.000	0.000
S3	0.000	0.000	0.000
S4	0.000	0.000	0.000
S5	0.000	0.000	0.000
S6	0.000	0.000	0.000
S7	0.000	0.000	0.000
S8	0.000	0.000	0.000



Company

ANADARKO PETROLEUM CORPORATION

Well

SUCKLA FARMS INC F UNIT 1

Field

WATTENBERG

County

WELD

State

CO