

T7N, R80W, 6th P.M.

SandRidge Exploration & Production

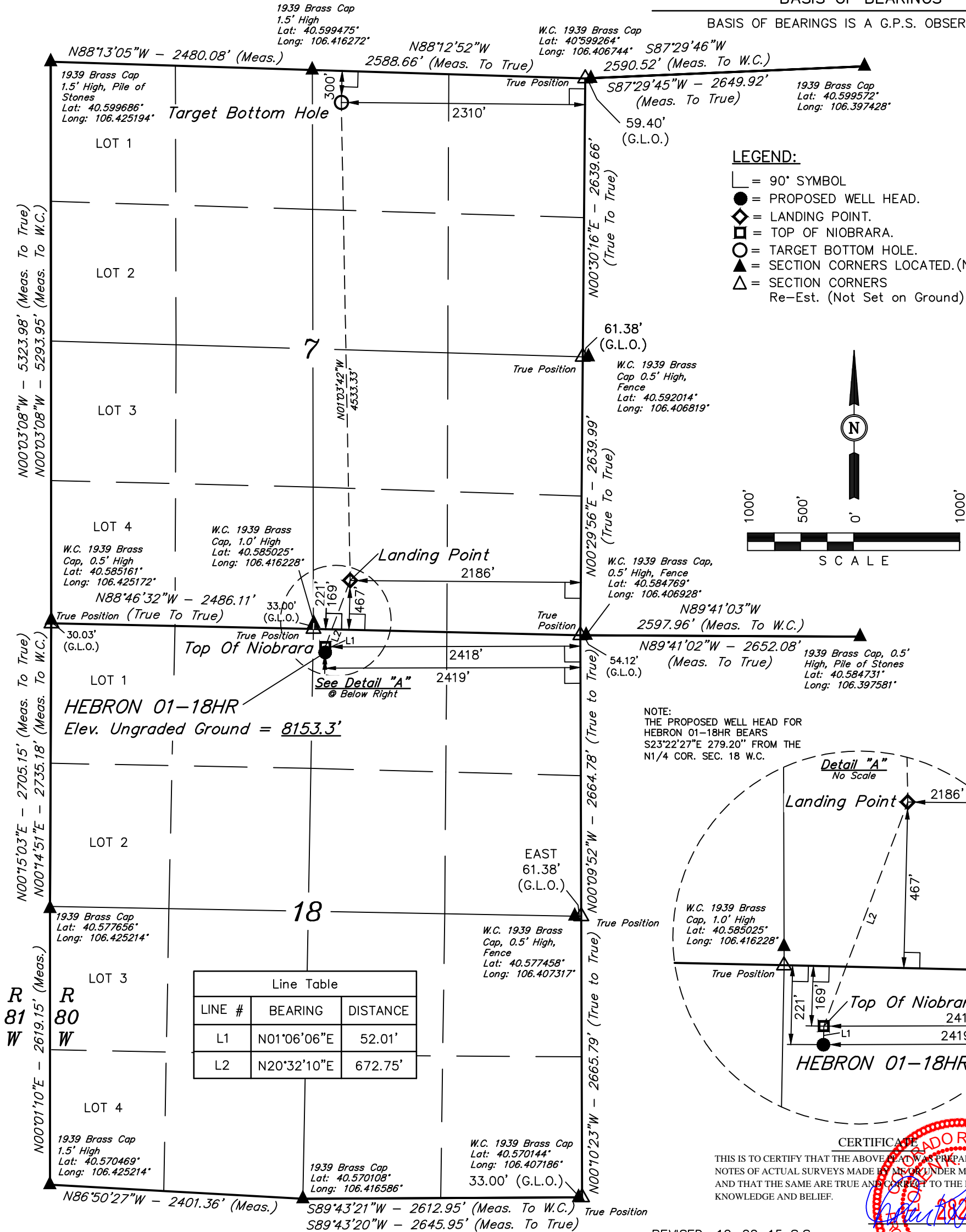
Well location, HEBRON 01-18HR, located as shown in the NW 1/4 NE 1/4 of Section 18, T7N, R80W, 6th P.M., Jackson County, Colorado.

BASIS OF ELEVATION

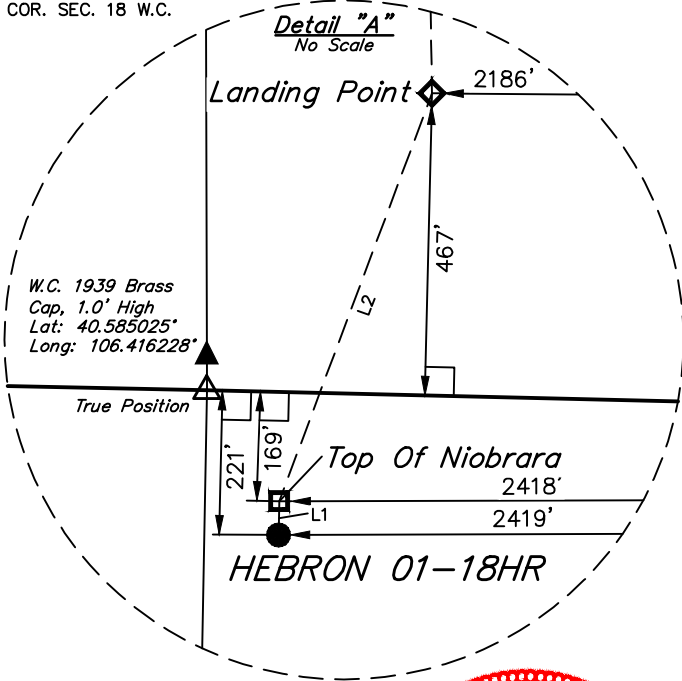
SPOT ELEVATION AT THE SOUTHEAST CORNER OF SECTION 29, T7N, R80W, 6th P.M. TAKEN FROM THE COALMONT QUADRANGLE, COLORADO, JACKSON COUNTY, 7.5 MINUTE QUAD. (TOPOGRAPHIC MAP) PUBLISHED BY THE UNITED STATES DEPARTMENT OF THE INTERIOR, GEOLOGICAL SURVEY. SAID ELEVATION IS MARKED AS BEING 8156 FEET

BASIS OF BEARINGS

BASIS OF BEARINGS IS A G.P.S. OBSERVATION.



NOTE:
THE PROPOSED WELL HEAD FOR
HEBRON 01-18HR BEARS
S23°22'27"E 279.20' FROM THE
N1/4 COR. SEC. 18 W.C.



CERTIFICATE

THIS IS TO CERTIFY THAT THE ABOVE MAP WAS PREPARED FROM FIELD NOTES OF ACTUAL SURVEYS MADE BY ME OR UNDER MY SUPERVISION AND THAT THE SAME ARE TRUE AND CORRECT TO THE BEST OF MY KNOWLEDGE AND BELIEF.

REVISED: 12-22-15 S.S.
REVISED: 12-15-15 C.D.L.
REVISED: 11-23-15 M.F.D.
REVISED: 11-19-15 M.O.E.
REVISED: 11-16-15 M.O.E.

REGISTERED LAND SURVEYOR
REGISTRATION NO. 28285
STATE OF COLORADO
JAN 15 2015

NAD 83 (TARGET BOTTOM HOLE)		
LATITUDE = 40°35'55.06" (40.598628)		
LONGITUDE = 106°24'55.01" (106.415281)		
NAD 27 (TARGET BOTTOM HOLE)		
LATITUDE = 40°35'55.14" (40.598650)		
LONGITUDE = 106°24'52.90" (106.414694)		
STATE PLANE NAD 83 (CO. NORTH)		
N: 1462233.80 E: 2745836.22		
STATE PLANE NAD 27 (CO. NORTH)		
N: 462231.69 E: 1745992.44		
NAD 83 (LANDING POINT)		
LATITUDE = 40°35'10.29" (40.586192)		
LONGITUDE = 106°24'53.91" (106.414975)		
NAD 27 (LANDING POINT)		
LATITUDE = 40°35'10.37" (40.586214)		
LONGITUDE = 106°24'51.80" (106.414389)		
STATE PLANE NAD 83 (CO. NORTH)		
N: 1457702.50 E: 2745874.08		
STATE PLANE NAD 27 (CO. NORTH)		
N: 457700.38 E: 1746030.35		

Line Table		
LINE #	BEARING	DISTANCE
L1	N01°06'06"E	52.01'
L2	N20°32'10"E	672.75'

NAD 83 (TOP OF NIOBRARA)		
LATITUDE = 40°35'04.07" (40.584464)		
LONGITUDE = 106°24'56.97" (106.415825)		
NAD 27 (TOP OF NIOBRARA)		
LATITUDE = 40°35'04.15" (40.584486)		
LONGITUDE = 106°25'54.86" (106.431906)		
STATE PLANE NAD 83 (CO. NORTH)		
N: 1457075.20 E: 2745631.78		
STATE PLANE NAD 27 (CO. NORTH)		
N: 457073.07 E: 1745788.06		

NAD 83 (SURFACE LOCATION)		
LATITUDE = 40°35'03.56" (40.584322)		
LONGITUDE = 106°24'56.98" (106.415828)		
NAD 27 (SURFACE LOCATION)		
LATITUDE = 40°35'03.63" (40.584342)		
LONGITUDE = 106°24'54.87" (106.415242)		
STATE PLANE NAD 83 (CO. NORTH)		
N: 1457023.23 E: 2745630.26		
STATE PLANE NAD 27 (CO. NORTH)		
N: 457021.10 E: 1745786.53		

PDOP = 2.3

UINTAH ENGINEERING & LAND SURVEYING
85 SOUTH 200 EAST - VERNAL, UTAH 84078
(435) 789-1017

SCALE 1" = 1000'	DATE SURVEYED: 12-12-13	DATE DRAWN: 02-11-14
PARTY DAVE SWANSON C.S. M.D.	REFERENCES G.L.O. PLAT	
WEATHER COLD	FILE SandRidge Exploration & Production	