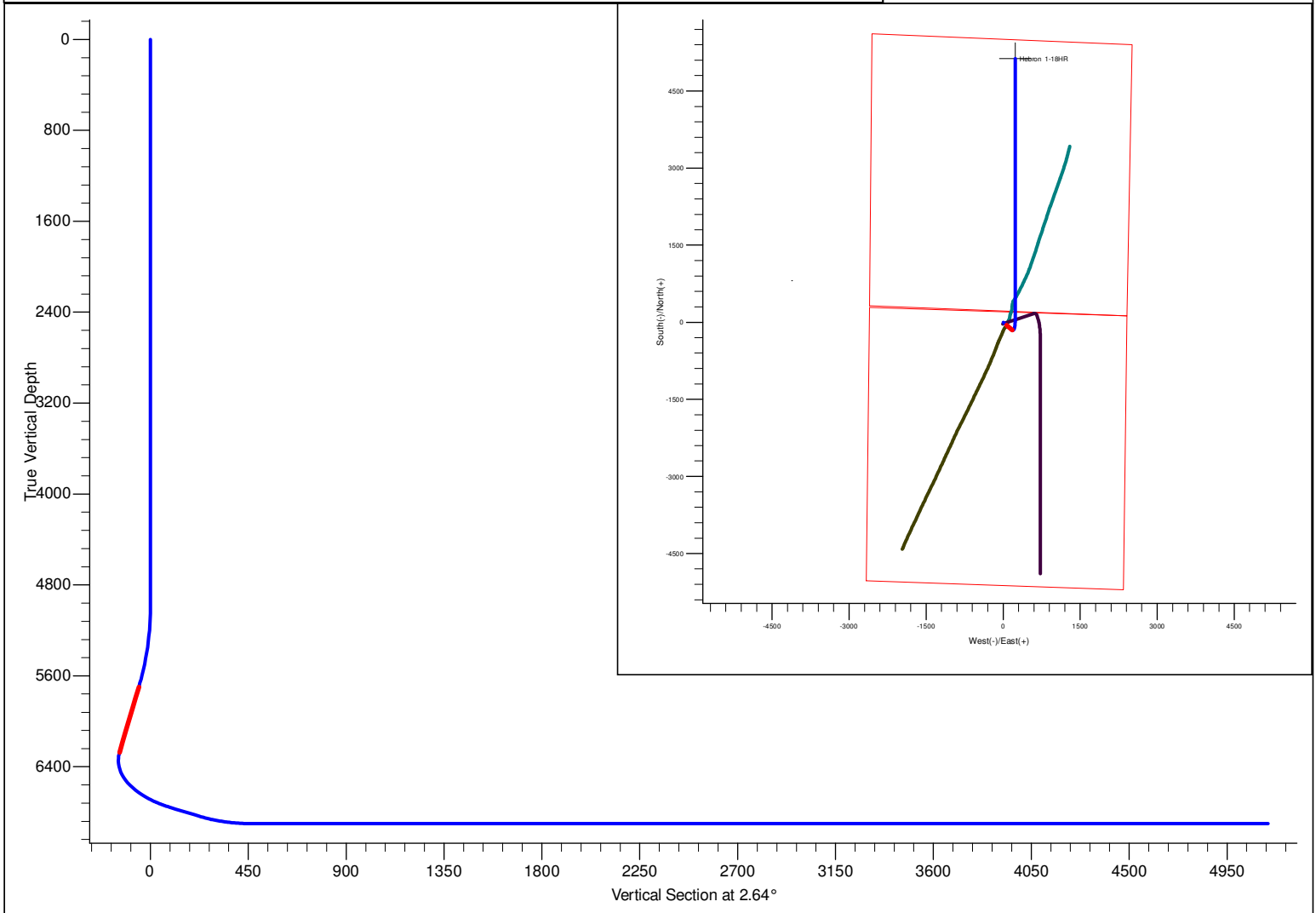


PROJECT DETAILS: North Park Basin								<div></div> <div>Azimuths to Grid North True North: 0.59° Magnetic North: 10.49° Magnetic Field Strength: 53187.7snT Dip Angle: 66.97° Date: 12/31/2009 Model: IGRF200510</div>			
Geodetic System: US State Plane 1983 Datum: North American Datum 1983 Ellipsoid: GRS 1980 Zone: Colorado Northern Zone System Datum: Mean Sea Level											
FORMATION TOP DETAILS										CASING DETAILS	
No formation data is available										No casing data is available	
DESIGN DETAILS: Hebron 1-18HR										<div>Project: North Park Basin Site: T7N-R80W-S7 Well: Hebron 1-18HR Wellbore: Wellbore #1 Design: Hebron 1-18HR</div>	
0' Vertical Section coordinates											
Type	Target	Azimuth	Origin	Type	N/S	E/W	From	TVD			
Target		2.64	Slot		0.0	0.0		0.0			



SECTION DETAILS											
Sec	MD	Inc	Azi	TVD	+N/-S	+E/-W	Dleg	TFace	VSect	Target	
1	0.0	0.00	0.00	0.0	0.0	0.0	0.00	0.00	0.0		
2	5000.0	0.00	0.00	5000.0	0.0	0.0	0.00	0.00	0.0		
3	5704.7	14.09	130.57	5697.6	-56.1	65.5	2.00	130.57	-53.0		
4	6297.7	14.09	130.57	6272.8	-150.0	175.2	0.00	0.00	-141.8		
5	6878.1	60.00	0.00	6761.0	85.0	236.6	12.00	-135.44	95.9		
6	7028.1	60.00	0.00	6836.0	214.9	236.6	0.00	0.00	225.6		
7	7278.1	90.00	0.00	6900.0	453.7	236.6	12.00	0.01	464.1	Hebron 1-18HR Target	
8	11957.6	90.00	0.00	6900.0	5133.2	236.9	0.00	0.00	5138.6	Hebron 1-18HR Target	

SandRidge Energy

North Park Basin

T7N-R80W-S7

Hebron 1-18HR

Wellbore #1

Plan: Hebron 1-18HR

Standard Survey Report

05 January, 2016

SandRidge Energy

Survey Report

Company:	SandRidge Energy	Local Co-ordinate Reference:	Well Hebron 1-18HR
Project:	North Park Basin	TVD Reference:	WELL @ 8154.0usft (Original Well Elev)
Site:	T7N-R80W-S7	MD Reference:	WELL @ 8154.0usft (Original Well Elev)
Well:	Hebron 1-18HR	North Reference:	Grid
Wellbore:	Wellbore #1	Survey Calculation Method:	Minimum Curvature
Design:	Hebron 1-18HR	Database:	EDMProd

Project	North Park Basin		
Map System:	US State Plane 1983	System Datum:	Mean Sea Level
Geo Datum:	North American Datum 1983		
Map Zone:	Colorado Northern Zone		

Site	T7N-R80W-S7		
Site Position:		Northing:	1,456,963.79 usft
From:	Lat/Long	Easting:	2,745,723.26 usft
Position Uncertainty:	0.0 usft	Slot Radius:	13-3/16 "
		Latitude:	40° 35' 2.980 N
		Longitude:	106° 24' 55.770 W
		Grid Convergence:	-0.59 °

Well	Hebron 1-18HR		
Well Position	+N/-S	0.0 usft	Northing:
	+E/-W	0.0 usft	Easting:
Position Uncertainty	0.0 usft	Wellhead Elevation:	0.0 usft
		Latitude:	40° 35' 3.683 N
		Longitude:	106° 24' 56.881 W
		Ground Level:	8,154.0 usft

Wellbore	Wellbore #1		
Magnetics	Model Name	Sample Date	Declination
			(°)
	IGRF200510	12/31/2009	9.90
			Dip Angle
			(°)
			66.97
			Field Strength
			(nT)
			53,188

Design	Hebron 1-18HR		
Audit Notes:			
Version:	Phase:	PROTOTYPE	Tie On Depth:
			0.0
Vertical Section:	Depth From (TVD)	+N/-S	+E/-W
	(usft)	(usft)	(usft)
	0.0	0.0	0.0
			Direction
			(°)
			2.64

Survey Tool Program	Date	12/18/2015		
From	To	Survey (Wellbore)	Tool Name	Description
(usft)	(usft)			
0.0	11,956.1	Hebron 1-18HR (Wellbore #1)	Sperry MWD	Fixed:v2:standard declination

Planned Survey									
Measured	Inclination	Azimuth	Vertical	+N/-S	+E/-W	Vertical	Dogleg	Build	Turn
Depth	(°)	(°)	Depth	(usft)	(usft)	Section	Rate	Rate	Rate
(usft)			(usft)			(usft)	(°/100usft)	(°/100usft)	(°/100usft)
0.0	0.00	0.00	0.0	0.0	0.0	0.0	0.00	0.00	0.00
100.0	0.00	0.00	100.0	0.0	0.0	0.0	0.00	0.00	0.00
200.0	0.00	0.00	200.0	0.0	0.0	0.0	0.00	0.00	0.00
300.0	0.00	0.00	300.0	0.0	0.0	0.0	0.00	0.00	0.00
400.0	0.00	0.00	400.0	0.0	0.0	0.0	0.00	0.00	0.00
500.0	0.00	0.00	500.0	0.0	0.0	0.0	0.00	0.00	0.00
600.0	0.00	0.00	600.0	0.0	0.0	0.0	0.00	0.00	0.00
700.0	0.00	0.00	700.0	0.0	0.0	0.0	0.00	0.00	0.00
800.0	0.00	0.00	800.0	0.0	0.0	0.0	0.00	0.00	0.00
900.0	0.00	0.00	900.0	0.0	0.0	0.0	0.00	0.00	0.00

SandRidge Energy

Survey Report

Company:	SandRidge Energy	Local Co-ordinate Reference:	Well Hebron 1-18HR
Project:	North Park Basin	TVD Reference:	WELL @ 8154.0usft (Original Well Elev)
Site:	T7N-R80W-S7	MD Reference:	WELL @ 8154.0usft (Original Well Elev)
Well:	Hebron 1-18HR	North Reference:	Grid
Wellbore:	Wellbore #1	Survey Calculation Method:	Minimum Curvature
Design:	Hebron 1-18HR	Database:	EDMPProd

Planned Survey

Measured Depth (usft)	Inclination (°)	Azimuth (°)	Vertical Depth (usft)	+N/-S (usft)	+E/-W (usft)	Vertical Section (usft)	Dogleg Rate (°/100usft)	Build Rate (°/100usft)	Turn Rate (°/100usft)
1,000.0	0.00	0.00	1,000.0	0.0	0.0	0.0	0.00	0.00	0.00
1,100.0	0.00	0.00	1,100.0	0.0	0.0	0.0	0.00	0.00	0.00
1,200.0	0.00	0.00	1,200.0	0.0	0.0	0.0	0.00	0.00	0.00
1,300.0	0.00	0.00	1,300.0	0.0	0.0	0.0	0.00	0.00	0.00
1,400.0	0.00	0.00	1,400.0	0.0	0.0	0.0	0.00	0.00	0.00
1,500.0	0.00	0.00	1,500.0	0.0	0.0	0.0	0.00	0.00	0.00
1,600.0	0.00	0.00	1,600.0	0.0	0.0	0.0	0.00	0.00	0.00
1,700.0	0.00	0.00	1,700.0	0.0	0.0	0.0	0.00	0.00	0.00
1,800.0	0.00	0.00	1,800.0	0.0	0.0	0.0	0.00	0.00	0.00
1,900.0	0.00	0.00	1,900.0	0.0	0.0	0.0	0.00	0.00	0.00
2,000.0	0.00	0.00	2,000.0	0.0	0.0	0.0	0.00	0.00	0.00
2,100.0	0.00	0.00	2,100.0	0.0	0.0	0.0	0.00	0.00	0.00
2,200.0	0.00	0.00	2,200.0	0.0	0.0	0.0	0.00	0.00	0.00
2,300.0	0.00	0.00	2,300.0	0.0	0.0	0.0	0.00	0.00	0.00
2,400.0	0.00	0.00	2,400.0	0.0	0.0	0.0	0.00	0.00	0.00
2,500.0	0.00	0.00	2,500.0	0.0	0.0	0.0	0.00	0.00	0.00
2,600.0	0.00	0.00	2,600.0	0.0	0.0	0.0	0.00	0.00	0.00
2,700.0	0.00	0.00	2,700.0	0.0	0.0	0.0	0.00	0.00	0.00
2,800.0	0.00	0.00	2,800.0	0.0	0.0	0.0	0.00	0.00	0.00
2,900.0	0.00	0.00	2,900.0	0.0	0.0	0.0	0.00	0.00	0.00
3,000.0	0.00	0.00	3,000.0	0.0	0.0	0.0	0.00	0.00	0.00
3,100.0	0.00	0.00	3,100.0	0.0	0.0	0.0	0.00	0.00	0.00
3,200.0	0.00	0.00	3,200.0	0.0	0.0	0.0	0.00	0.00	0.00
3,300.0	0.00	0.00	3,300.0	0.0	0.0	0.0	0.00	0.00	0.00
3,400.0	0.00	0.00	3,400.0	0.0	0.0	0.0	0.00	0.00	0.00
3,500.0	0.00	0.00	3,500.0	0.0	0.0	0.0	0.00	0.00	0.00
3,600.0	0.00	0.00	3,600.0	0.0	0.0	0.0	0.00	0.00	0.00
3,700.0	0.00	0.00	3,700.0	0.0	0.0	0.0	0.00	0.00	0.00
3,800.0	0.00	0.00	3,800.0	0.0	0.0	0.0	0.00	0.00	0.00
3,900.0	0.00	0.00	3,900.0	0.0	0.0	0.0	0.00	0.00	0.00
4,000.0	0.00	0.00	4,000.0	0.0	0.0	0.0	0.00	0.00	0.00
4,100.0	0.00	0.00	4,100.0	0.0	0.0	0.0	0.00	0.00	0.00
4,200.0	0.00	0.00	4,200.0	0.0	0.0	0.0	0.00	0.00	0.00
4,300.0	0.00	0.00	4,300.0	0.0	0.0	0.0	0.00	0.00	0.00
4,400.0	0.00	0.00	4,400.0	0.0	0.0	0.0	0.00	0.00	0.00
4,500.0	0.00	0.00	4,500.0	0.0	0.0	0.0	0.00	0.00	0.00
4,600.0	0.00	0.00	4,600.0	0.0	0.0	0.0	0.00	0.00	0.00
4,700.0	0.00	0.00	4,700.0	0.0	0.0	0.0	0.00	0.00	0.00
4,800.0	0.00	0.00	4,800.0	0.0	0.0	0.0	0.00	0.00	0.00
4,900.0	0.00	0.00	4,900.0	0.0	0.0	0.0	0.00	0.00	0.00
5,000.0	0.00	0.00	5,000.0	0.0	0.0	0.0	0.00	0.00	0.00
5,100.0	2.00	130.57	5,100.0	-1.1	1.3	-1.1	2.00	2.00	0.00
5,200.0	4.00	130.57	5,199.8	-4.5	5.3	-4.3	2.00	2.00	0.00
5,300.0	6.00	130.57	5,299.5	-10.2	11.9	-9.6	2.00	2.00	0.00

SandRidge Energy

Survey Report

Company:	SandRidge Energy	Local Co-ordinate Reference:	Well Hebron 1-18HR
Project:	North Park Basin	TVD Reference:	WELL @ 8154.0usft (Original Well Elev)
Site:	T7N-R80W-S7	MD Reference:	WELL @ 8154.0usft (Original Well Elev)
Well:	Hebron 1-18HR	North Reference:	Grid
Wellbore:	Wellbore #1	Survey Calculation Method:	Minimum Curvature
Design:	Hebron 1-18HR	Database:	EDMProd

Planned Survey

Measured Depth (usft)	Inclination (°)	Azimuth (°)	Vertical Depth (usft)	+N/-S (usft)	+E/-W (usft)	Vertical Section (usft)	Dogleg Rate (°/100usft)	Build Rate (°/100usft)	Turn Rate (°/100usft)
5,400.0	8.00	130.57	5,398.7	-18.1	21.2	-17.1	2.00	2.00	0.00
5,500.0	10.00	130.57	5,497.5	-28.3	33.1	-26.8	2.00	2.00	0.00
5,600.0	12.00	130.57	5,595.6	-40.7	47.6	-38.5	2.00	2.00	0.00
5,704.7	14.09	130.57	5,697.6	-56.1	65.5	-53.0	2.00	2.00	0.00
5,800.0	14.09	130.57	5,790.0	-71.2	83.1	-67.3	0.00	0.00	0.00
5,900.0	14.09	130.57	5,887.0	-87.0	101.6	-82.2	0.00	0.00	0.00
6,000.0	14.09	130.57	5,984.0	-102.8	120.1	-97.2	0.00	0.00	0.00
6,100.0	14.09	130.57	6,081.0	-118.7	138.6	-112.2	0.00	0.00	0.00
6,200.0	14.09	130.57	6,178.0	-134.5	157.1	-127.1	0.00	0.00	0.00
6,297.7	14.09	130.57	6,272.8	-150.0	175.2	-141.8	0.00	0.00	0.00
6,300.0	13.90	129.78	6,275.0	-150.4	175.6	-142.1	12.00	-8.49	-35.05
6,325.0	11.98	119.44	6,299.4	-153.6	180.2	-145.1	12.00	-7.69	-41.32
6,350.0	10.56	105.85	6,323.9	-155.5	184.7	-146.8	12.00	-5.66	-54.36
6,375.0	9.88	89.33	6,348.5	-156.1	189.0	-147.2	12.00	-2.76	-66.09
6,400.0	10.06	71.97	6,373.1	-155.4	193.2	-146.3	12.00	0.75	-69.44
6,425.0	11.08	56.53	6,397.7	-153.4	197.3	-144.1	12.00	4.08	-61.76
6,450.0	12.74	44.35	6,422.2	-150.1	201.2	-140.6	12.00	6.61	-48.72
6,475.0	14.81	35.23	6,446.5	-145.5	205.0	-135.9	12.00	8.31	-36.51
6,500.0	17.16	28.42	6,470.5	-139.6	208.6	-129.9	12.00	9.39	-27.23
6,525.0	19.68	23.26	6,494.2	-132.5	212.0	-122.6	12.00	10.08	-20.65
6,550.0	22.32	19.25	6,517.5	-124.2	215.3	-114.1	12.00	10.54	-16.04
6,575.0	25.03	16.05	6,540.4	-114.6	218.3	-104.4	12.00	10.85	-12.76
6,600.0	27.80	13.46	6,562.8	-103.8	221.1	-93.5	12.00	11.08	-10.39
6,625.0	30.61	11.30	6,584.6	-91.9	223.7	-81.5	12.00	11.24	-8.63
6,650.0	33.45	9.47	6,605.8	-78.9	226.1	-68.4	12.00	11.36	-7.30
6,675.0	36.31	7.90	6,626.3	-64.8	228.2	-54.2	12.00	11.45	-6.28
6,700.0	39.19	6.53	6,646.1	-49.6	230.2	-38.9	12.00	11.52	-5.48
6,725.0	42.09	5.32	6,665.1	-33.4	231.8	-22.7	12.00	11.58	-4.84
6,750.0	44.99	4.24	6,683.2	-16.2	233.3	-5.4	12.00	11.62	-4.32
6,775.0	47.91	3.27	6,700.4	1.9	234.4	12.7	12.00	11.66	-3.91
6,800.0	50.83	2.38	6,716.7	20.8	235.4	31.6	12.00	11.69	-3.56
6,825.0	53.76	1.56	6,732.0	40.6	236.1	51.4	12.00	11.72	-3.28
6,850.0	56.69	0.80	6,746.3	61.1	236.5	71.9	12.00	11.74	-3.04
6,875.0	59.63	0.09	6,759.4	82.3	236.6	93.2	12.00	11.75	-2.84
6,878.1	60.00	0.00	6,761.0	85.0	236.6	95.9	12.00	11.76	-2.74
6,900.0	60.00	0.00	6,771.9	104.0	236.6	114.8	0.00	0.00	0.00
7,000.0	60.00	0.00	6,821.9	190.6	236.6	201.3	0.00	0.00	0.00
7,028.1	60.00	0.00	6,836.0	214.9	236.6	225.6	0.00	0.00	0.00
7,050.0	62.62	0.00	6,846.5	234.1	236.6	244.8	12.00	12.00	0.00
7,075.0	65.62	0.00	6,857.4	256.6	236.6	267.3	12.00	12.00	0.00
7,100.0	68.62	0.00	6,867.1	279.7	236.6	290.3	12.00	12.00	0.00
7,125.0	71.62	0.00	6,875.6	303.2	236.6	313.7	12.00	12.00	0.00
7,150.0	74.62	0.00	6,882.9	327.1	236.6	337.6	12.00	12.00	0.00

SandRidge Energy

Survey Report

Company:	SandRidge Energy	Local Co-ordinate Reference:	Well Hebron 1-18HR
Project:	North Park Basin	TVD Reference:	WELL @ 8154.0usft (Original Well Elev)
Site:	T7N-R80W-S7	MD Reference:	WELL @ 8154.0usft (Original Well Elev)
Well:	Hebron 1-18HR	North Reference:	Grid
Wellbore:	Wellbore #1	Survey Calculation Method:	Minimum Curvature
Design:	Hebron 1-18HR	Database:	EDMProd

Planned Survey

Measured Depth (usft)	Inclination (°)	Azimuth (°)	Vertical Depth (usft)	+N/-S (usft)	+E/-W (usft)	Vertical Section (usft)	Dogleg Rate (°/100usft)	Build Rate (°/100usft)	Turn Rate (°/100usft)
7,175.0	77.62	0.00	6,888.9	351.4	236.6	361.9	12.00	12.00	0.00
7,200.0	80.62	0.00	6,893.6	375.9	236.6	386.4	12.00	12.00	0.00
7,225.0	83.62	0.00	6,897.0	400.7	236.6	411.1	12.00	12.00	0.00
7,250.0	86.62	0.00	6,899.1	425.6	236.6	436.0	12.00	12.00	0.00
7,275.0	89.62	0.00	6,900.0	450.6	236.6	461.0	12.00	12.00	0.00
7,278.1	90.00	0.00	6,900.0	453.7	236.6	464.1	12.00	12.00	0.00
7,300.0	90.00	0.00	6,900.0	475.6	236.6	486.0	0.00	0.00	0.00
7,400.0	90.00	0.00	6,900.0	575.6	236.6	585.8	0.00	0.00	0.00
7,500.0	90.00	0.00	6,900.0	675.6	236.7	685.7	0.00	0.00	0.00
7,600.0	90.00	0.00	6,900.0	775.6	236.7	785.6	0.00	0.00	0.00
7,700.0	90.00	0.00	6,900.0	875.6	236.7	885.5	0.00	0.00	0.00
7,800.0	90.00	0.00	6,900.0	975.6	236.7	985.4	0.00	0.00	0.00
7,900.0	90.00	0.00	6,900.0	1,075.6	236.7	1,085.3	0.00	0.00	0.00
8,000.0	90.00	0.00	6,900.0	1,175.6	236.7	1,185.2	0.00	0.00	0.00
8,100.0	90.00	0.00	6,900.0	1,275.6	236.7	1,285.1	0.00	0.00	0.00
8,200.0	90.00	0.00	6,900.0	1,375.6	236.7	1,385.0	0.00	0.00	0.00
8,300.0	90.00	0.00	6,900.0	1,475.6	236.7	1,484.9	0.00	0.00	0.00
8,400.0	90.00	0.00	6,900.0	1,575.6	236.7	1,584.8	0.00	0.00	0.00
8,500.0	90.00	0.00	6,900.0	1,675.6	236.7	1,684.7	0.00	0.00	0.00
8,600.0	90.00	0.00	6,900.0	1,775.6	236.7	1,784.6	0.00	0.00	0.00
8,700.0	90.00	0.00	6,900.0	1,875.6	236.7	1,884.5	0.00	0.00	0.00
8,800.0	90.00	0.00	6,900.0	1,975.6	236.7	1,984.4	0.00	0.00	0.00
8,900.0	90.00	0.00	6,900.0	2,075.6	236.7	2,084.3	0.00	0.00	0.00
9,000.0	90.00	0.00	6,900.0	2,175.6	236.7	2,184.2	0.00	0.00	0.00
9,100.0	90.00	0.00	6,900.0	2,275.6	236.7	2,284.0	0.00	0.00	0.00
9,200.0	90.00	0.00	6,900.0	2,375.6	236.7	2,383.9	0.00	0.00	0.00
9,300.0	90.00	0.00	6,900.0	2,475.6	236.8	2,483.8	0.00	0.00	0.00
9,400.0	90.00	0.00	6,900.0	2,575.6	236.8	2,583.7	0.00	0.00	0.00
9,500.0	90.00	0.00	6,900.0	2,675.6	236.8	2,683.6	0.00	0.00	0.00
9,600.0	90.00	0.00	6,900.0	2,775.6	236.8	2,783.5	0.00	0.00	0.00
9,700.0	90.00	0.00	6,900.0	2,875.6	236.8	2,883.4	0.00	0.00	0.00
9,800.0	90.00	0.00	6,900.0	2,975.6	236.8	2,983.3	0.00	0.00	0.00
9,900.0	90.00	0.00	6,900.0	3,075.6	236.8	3,083.2	0.00	0.00	0.00
10,000.0	90.00	0.00	6,900.0	3,175.6	236.8	3,183.1	0.00	0.00	0.00
10,100.0	90.00	0.00	6,900.0	3,275.6	236.8	3,283.0	0.00	0.00	0.00
10,200.0	90.00	0.00	6,900.0	3,375.6	236.8	3,382.9	0.00	0.00	0.00
10,300.0	90.00	0.00	6,900.0	3,475.6	236.8	3,482.8	0.00	0.00	0.00
10,400.0	90.00	0.00	6,900.0	3,575.6	236.8	3,582.7	0.00	0.00	0.00
10,500.0	90.00	0.00	6,900.0	3,675.6	236.8	3,682.6	0.00	0.00	0.00
10,600.0	90.00	0.00	6,900.0	3,775.6	236.8	3,782.5	0.00	0.00	0.00
10,700.0	90.00	0.00	6,900.0	3,875.6	236.8	3,882.3	0.00	0.00	0.00
10,800.0	90.00	0.00	6,900.0	3,975.6	236.8	3,982.2	0.00	0.00	0.00
10,900.0	90.00	0.00	6,900.0	4,075.6	236.8	4,082.1	0.00	0.00	0.00

SandRidge Energy

Survey Report

Company:	SandRidge Energy	Local Co-ordinate Reference:	Well Hebron 1-18HR
Project:	North Park Basin	TVD Reference:	WELL @ 8154.0usft (Original Well Elev)
Site:	T7N-R80W-S7	MD Reference:	WELL @ 8154.0usft (Original Well Elev)
Well:	Hebron 1-18HR	North Reference:	Grid
Wellbore:	Wellbore #1	Survey Calculation Method:	Minimum Curvature
Design:	Hebron 1-18HR	Database:	EDMProd

Planned Survey

Measured Depth (usft)	Inclination (°)	Azimuth (°)	Vertical Depth (usft)	+N/-S (usft)	+E/-W (usft)	Vertical Section (usft)	Dogleg Rate (°/100usft)	Build Rate (°/100usft)	Turn Rate (°/100usft)
11,000.0	90.00	0.00	6,900.0	4,175.6	236.8	4,182.0	0.00	0.00	0.00
11,100.0	90.00	0.00	6,900.0	4,275.6	236.9	4,281.9	0.00	0.00	0.00
11,200.0	90.00	0.00	6,900.0	4,375.6	236.9	4,381.8	0.00	0.00	0.00
11,300.0	90.00	0.00	6,900.0	4,475.6	236.9	4,481.7	0.00	0.00	0.00
11,400.0	90.00	0.00	6,900.0	4,575.6	236.9	4,581.6	0.00	0.00	0.00
11,500.0	90.00	0.00	6,900.0	4,675.6	236.9	4,681.5	0.00	0.00	0.00
11,600.0	90.00	0.00	6,900.0	4,775.6	236.9	4,781.4	0.00	0.00	0.00
11,700.0	90.00	0.00	6,900.0	4,875.6	236.9	4,881.3	0.00	0.00	0.00
11,800.0	90.00	0.00	6,900.0	4,975.6	236.9	4,981.2	0.00	0.00	0.00
11,900.0	90.00	0.00	6,900.0	5,075.6	236.9	5,081.1	0.00	0.00	0.00
11,957.6	90.00	0.00	6,900.0	5,133.2	236.9	5,138.6	0.00	0.00	0.00

Design Targets

Target Name	Dip Angle (°)	Dip Dir. (°)	TVD (usft)	+N/-S (usft)	+E/-W (usft)	Northing (usft)	Easting (usft)	Latitude	Longitude
- hit/miss target									
- Shape									
Hebron 1-18HR Target	0.00	360.00	6,900.0	5,133.2	236.9	1,462,168.96	2,745,875.16	40° 35' 54.428 N	106° 24' 54.498 W
- plan hits target center									
- Point									

Checked By: _____ Approved By: _____ Date: _____