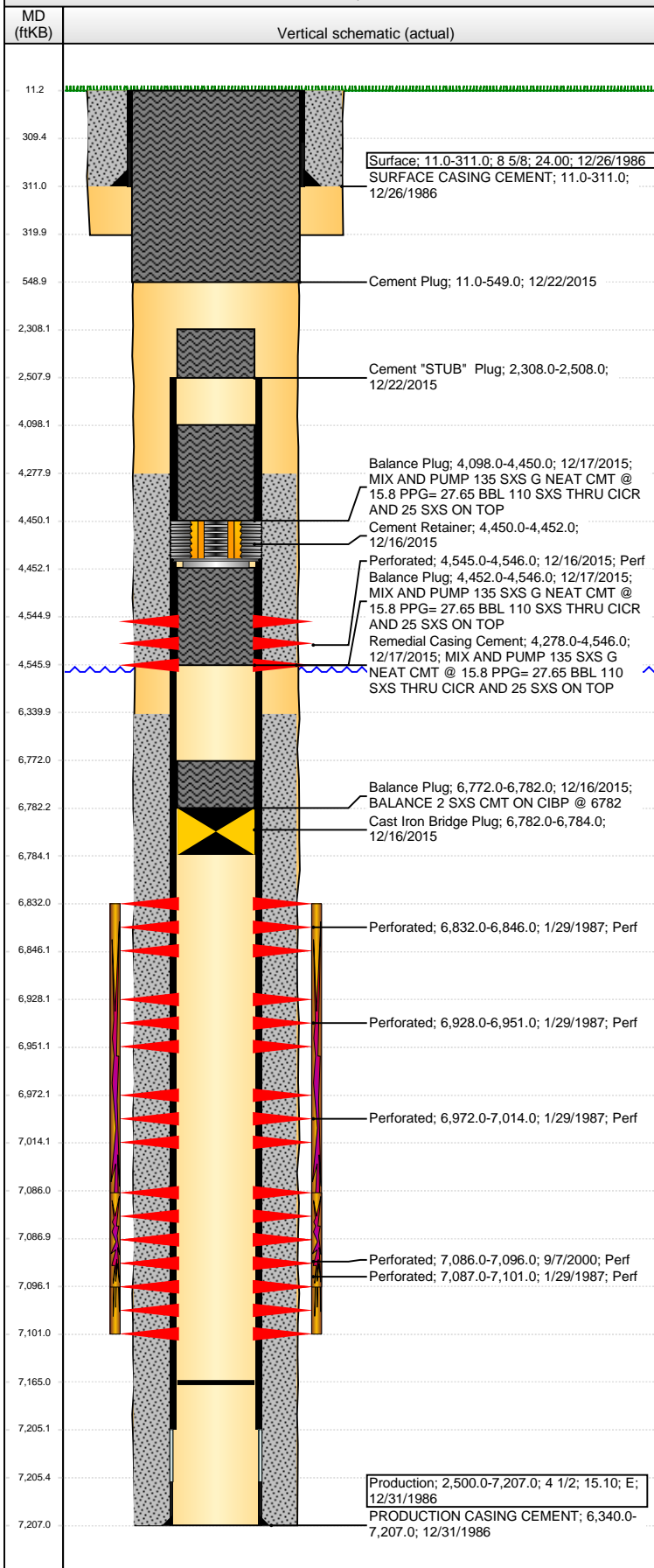


Well Name: FRY 13-02

VERTICAL - ORIGINAL HOLE, 12/30/2015 7:00:09 AM



Well Header

API 05-123-13303	Business Unit DJ BASIN	District 15	Well Config VERTICAL
Original KB Elevation (ft) 4,788.00	KB - GL / MSL (ftKB) 11.00	Spud Date 12/26/1986	P & A Date 12/22/2015

Comment

DISCREPANCY- DRL AND ST RPTS TD @ 7187; PROD CSG LANDED @ 7207

NO CSG GRADE FOUND

Directions To Well

CR 49 AND CR 44 N .25 NW INTO

Congressional Location

Quarter 1	Quarter 2	Quarter 3	Quarter 4	Section	Township	Twtnshp N...	Range	Rng E/W Dir
	NW	SE	NE	13	4	N	65	W

Bottom Hole Location

North-South Distance (ft)	From N or S Line	East-West Distance (ft)	From E or W Line

Plug Back Total Depths

Date	Depth (ftKB)	Method	Com
1/5/1987	7,108.0	CASED HOLE LOG	DEPTH LOGGER ON CBL
7/7/2004	7,165.0	TAG	CLEAN OUT TO LAND TUBING

Wellbore Sections

Section Des	Size (in)	Act Top, MD (ftKB)	Act Btm, MD (ftKB)
SURFACE	12 1/4	11.0	320.0
PRODUCTION	7 7/8	320.0	7,207.0

Zone Statuses

Zone Name	Status Date	Status	Fluid Type	Job	Prod Method
CODELL	2/9/1987	PR		DRILLING/CO...	
CODELL	9/16/2000	PR		RE-FRAC, 9/6/...	
CODELL	12/16/2015	P&A		ABANDON WE...	
NIOBRARA	2/9/1987	PR		DRILLING/CO...	
NIOBRARA	12/16/2015	P&A		ABANDON WE...	

Casing Strings

Surface, 311.0ftKB

Casing Description	Run Date	OD (in)	Wt/Len (l...)	Grade	Top, MD (ft...)	MD (ftKB)
Surface	12/26/1986	8 5/8	24.00		11.0	311.0

Production, 7,207.0ftKB

Casing Description	Run Date	OD (in)	Wt/Len (l...)	Grade	Top, MD (ft...)	MD (ftKB)
Production	12/31/1986	4 1/2	15.10	E	11.0	7,207.0

Cement

Description	Top Depth (ftKB)	Bottom Depth (ftKB)
SURFACE CASING CEMENT	11.0	311.0
PRODUCTION CASING CEMENT	6,340.0	7,207.0
Balance Plug	6,772.0	6,782.0
Balance Plug	4,452.0	4,546.0
Balance Plug	4,098.0	4,450.0
Remedial Casing Cement	4,278.0	4,546.0
Cement "STUB" Plug	2,308.0	2,508.0
Cement Plug	11.0	549.0

Tubing Strings

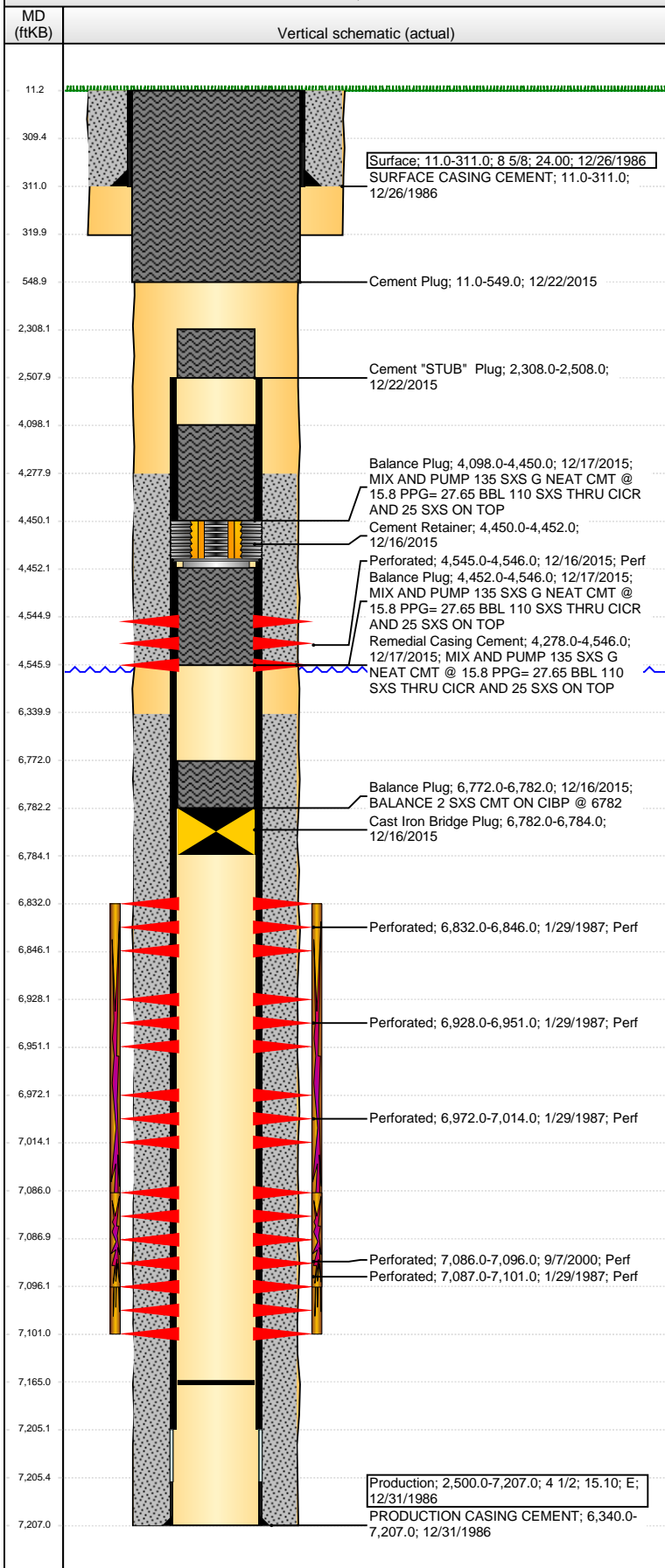
Tubing Description	Run Date	String...	ID (in)	Wt (lb/ft)	Grade	Len (ft)	Set De...
Tubing - Production	7/8/2004	2 3/8				7,049.00	

Perforation Data

Zone	Bnch/St g	Entered Shot Total	Top (ftKB)	Btm (ftKB)	Date
<zonenumber>, ORIGINAL HOLE			4,545.00	4,546.00	12/16/2015
NIOBRARA, ORIGINAL HOLE		3	6,832.00	6,846.00	1/29/1987
NIOBRARA, ORIGINAL HOLE		5	6,928.00	6,951.00	1/29/1987
NIOBRARA, ORIGINAL HOLE		3	6,972.00	7,014.00	1/29/1987
CODELL, ORIGINAL HOLE		40	7,086.00	7,096.00	9/7/2000
CODELL, ORIGINAL HOLE		7	7,087.00	7,101.00	1/29/1987

Well Name: FRY 13-02

VERTICAL - ORIGINAL HOLE, 12/30/2015 7:00:11 AM



Stimulations & Treatments				
Date	Zone	Primary Job Type		
1/30/1987	NIOBRARA-CODELL, ORIGINAL HOLE	DRILLING/COMPLETION - ORIGINAL		
Technical Result		Tech Result Details		Tech Result Note
Comment				
Date	Zone	Primary Job Type		
9/13/2000	CODELL, ORIGINAL HOLE	RE-FRAC		
Technical Result		Tech Result Details		Tech Result Note
Comment				
Other In Hole				
Run Date	Des	OD (in)	Top (ftKB)	Btm (ftKB)
12/16/2015	Cast Iron Bridge Plug	3 3/4	6,782.0	6,784.0
12/16/2015	Cement Retainer	3 3/4	4,450.0	4,452.0
Logs				
Date	Type	Top, MD (ftKB)	Btm, MD (ftKB)	
12/31/1986	COMPENSATED DENSITY	290.0	7,217.0	
12/31/1986	INDUCTION	290.0	7,217.0	
1/5/1987	CEMENT BOND	6,250.0	7,105.0	
12/18/2015	CBL/CCL/GR	0.0	2,240.0	