

WELL LOCATION PLAT  
T7N, R80W, 6th P.M.

SandRidge Exploration & Production

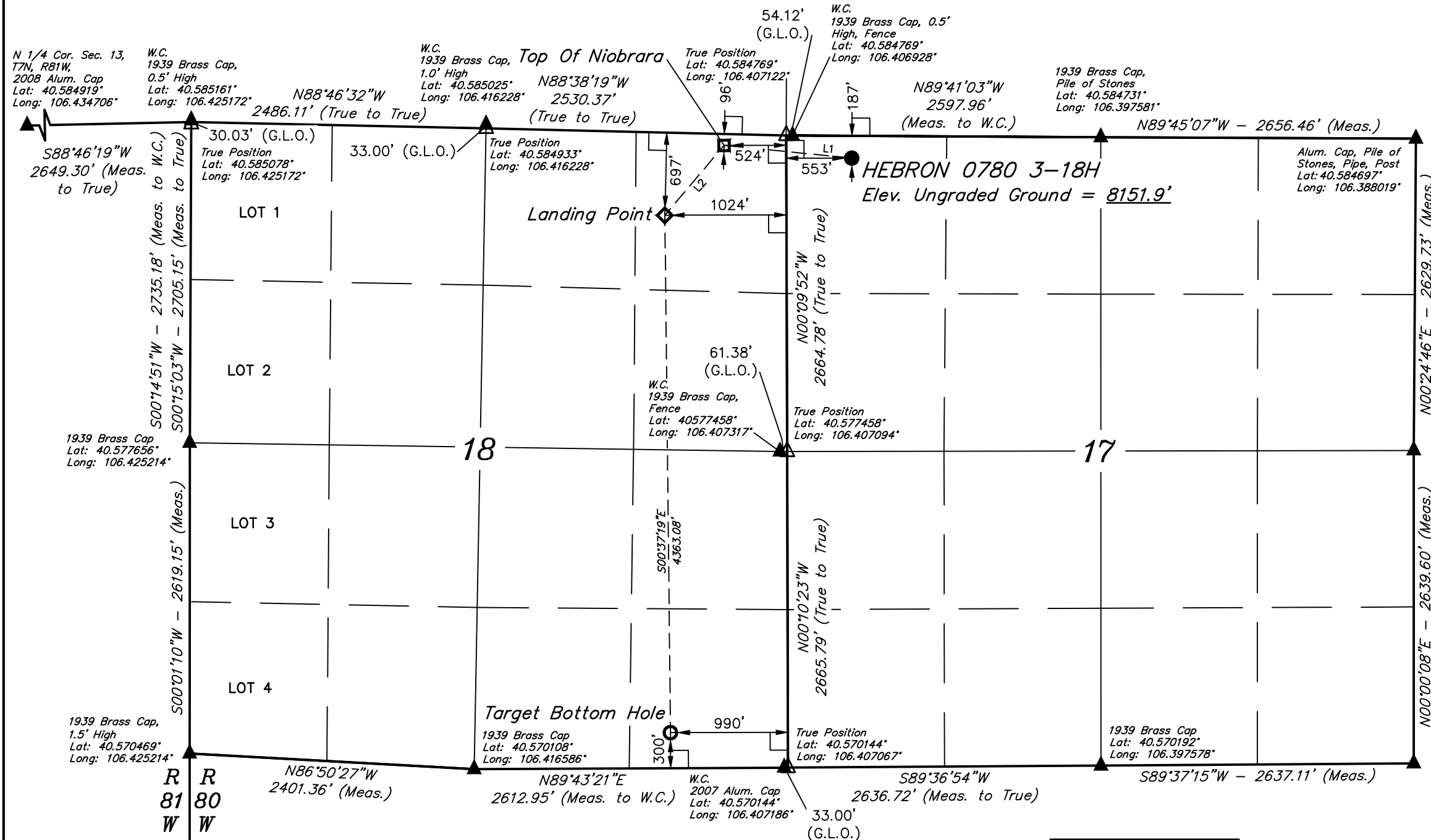
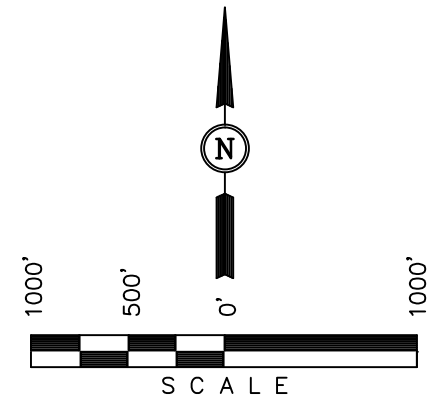
Well location, HEBRON 0780 3-18H, located as shown in the NW 1/4 NW 1/4 of Section 17, T7N, R80W, 6th P.M., JACKSON County, Colorado.

BASIS OF ELEVATION

SPOT ELEVATION AT THE SOUTHEAST CORNER OF SECTION 29, T7N, R80W, 6th P.M., TAKEN FROM THE COALMONT QUADRANGLE, COLORADO, JACKSON COUNTY, 7.5 MINUTE QUAD (TOPOGRAPHIC MAP) PUBLISHED BY THE UNITED STATES DEPARTMENT OF THE INTERIOR, GEOLOGICAL SURVEY. SAID ELEVATION IS MARKED AS BEING 8156 FEET.

BASIS OF BEARINGS

BASIS OF BEARINGS IS A G.P.S. OBSERVATION.



LEGEND:

- 90° SYMBOL
- PROPOSED WELLHEAD.
- LANDING POINT.
- TOP OF NIOBRARA.
- TARGET BOTTOM HOLE.
- SECTION CORNERS LOCATED. (NAD 83)
- SECTION CORNERS RE-ESTABLISHED. (Not Set on Ground.) (NAD 83)

NOTE:  
THE PROPOSED WELLHEAD FOR THE  
HEBRON 0780 3-18H BEARS  
S69°08'48"E 534.34' FROM THE  
NORTHWEST COR. SEC. 17 W.C.

LINE TABLE

LINE	DIRECTION	LENGTH
L1	N84°19'35"W	1082.30'
L2	S40°16'16"W	771.96'

PDOP = 1.6

NAD 83 (TARGET BOTTOM HOLE)	NAD 83 (LANDING POINT)	NAD 83 (TOP OF NIOBRARA)	NAD 83 (SURFACE LOCATION)
LATITUDE = 40°34'15.43" (40.570953)	LATITUDE = 40°34'58.53" (40.582925)	LATITUDE = 40°35'04.35" (40.584542)	LATITUDE = 40°35'03.29" (40.584247)
LONGITUDE = 106°24'38.27" (106.410631)	LONGITUDE = 106°24'38.89" (106.410803)	LONGITUDE = 106°24'32.43" (106.409008)	LONGITUDE = 106°24'18.47" (106.405131)
NAD 27 (TARGET BOTTOM HOLE)	NAD 27 (LANDING POINT)	NAD 27 (TOP OF NIOBRARA)	NAD 27 (SURFACE LOCATION)
LATITUDE = 40°34'15.51" (40.570975)	LATITUDE = 40°34'58.60" (40.582944)	LATITUDE = 40°35'04.42" (40.584561)	LATITUDE = 40°35'03.37" (40.584269)
LONGITUDE = 106°24'36.16" (106.410044)	LONGITUDE = 106°24'36.78" (106.410217)	LONGITUDE = 106°24'30.32" (106.408422)	LONGITUDE = 106°24'16.36" (106.404544)
STATE PLANE NAD 83 (CO. NORTH)	STATE PLANE NAD 83 (CO. NORTH)	STATE PLANE NAD 83 (CO. NORTH)	STATE PLANE NAD 83 (CO. NORTH)
N: 1452138.65 E: 2747023.73	N: 1456499.91 E: 2747020.77	N: 1457083.56 E: 2747525.52	N: 1456965.66 E: 2748600.93
STATE PLANE NAD 27 (CO. NORTH)	STATE PLANE NAD 27 (CO. NORTH)	STATE PLANE NAD 27 (CO. NORTH)	STATE PLANE NAD 27 (CO. NORTH)
N: 452136.51 E: 1747180.05	N: 456497.79 E: 1747177.04	N: 457081.45 E: 1747681.79	N: 456963.55 E: 1748757.19

CERTIFICATE  
THIS IS TO CERTIFY THAT THE ABOVE PLAT WAS PREPARED FROM FIELD NOTES OF ACTUAL SURVEYS MADE BY ME OR UNDER MY SUPERVISION, AND THAT THE SAME ARE TRUE AND CORRECT TO THE BEST OF MY KNOWLEDGE AND BELIEF.

CHAD MEIERS  
REGISTERED LAND SURVEYOR  
REGISTRATION NO. 28285  
STATE OF COLORADO  
2013-2015

REVISED: 12-22-15 S.S.  
REVISED: 12-14-15 C.D.L.

UINTAH ENGINEERING & LAND SURVEYING  
85 SOUTH 200 EAST - VERNAL, UTAH 84078  
(435) 789-1017

SCALE 1" = 1000'	DATE SURVEYED: 11-19-15	DATE DRAWN: 11-23-15
PARTY CHAD MEIERS, C.J. C.D.L.	REFERENCES G.L.O. PLAT	
WEATHER COLD	FILE SandRidge Exploration & Production	