

1801 Broadway
Suite 500
Denver, Colorado 80202



Callie Fiddes
Regulatory Technician
Tel: 303.398.0550
E-mail: cfiddes@gwogco.com

January 9, 2015

Colorado Oil and Gas Conservation Commission
1120 Lincoln Street, Suite 801
Denver, Colorado 80203

RE: **Proposed Wellbore Spacing Unit**
Marcus LD 02-380HN

Niobrara New Drill
Township 1 North, Range 67 West, 6th P.M.
Section 34
Weld County, Colorado

Dear Director:

Great Western Operating Company, LLC is planning to drill the above captioned well in accordance with the provisions of COGCC Rule 318A.e.

Great Western proposed wellbore spacing unit consists of:

- **W2W2 Sec 2; E2E2 Sec 3; E2E2 Sec 10; W2W2 Sec 11**
- **640 Acres**

The 30 day notification time period has passed and we have resolved any objections to such well locations or proposed spacing unit, therefore Great Western hereby requests the Director to approve the above mentioned well. Great Western Operating Company, LLC respectfully requests that the COGCC review the enclosed map illustrating the proposed wellbore spacing unit.

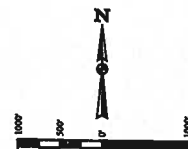
Respectfully,

Callie Fiddes

Callie Fiddes
Regulatory Technician
Great Western Operating Company, LLC

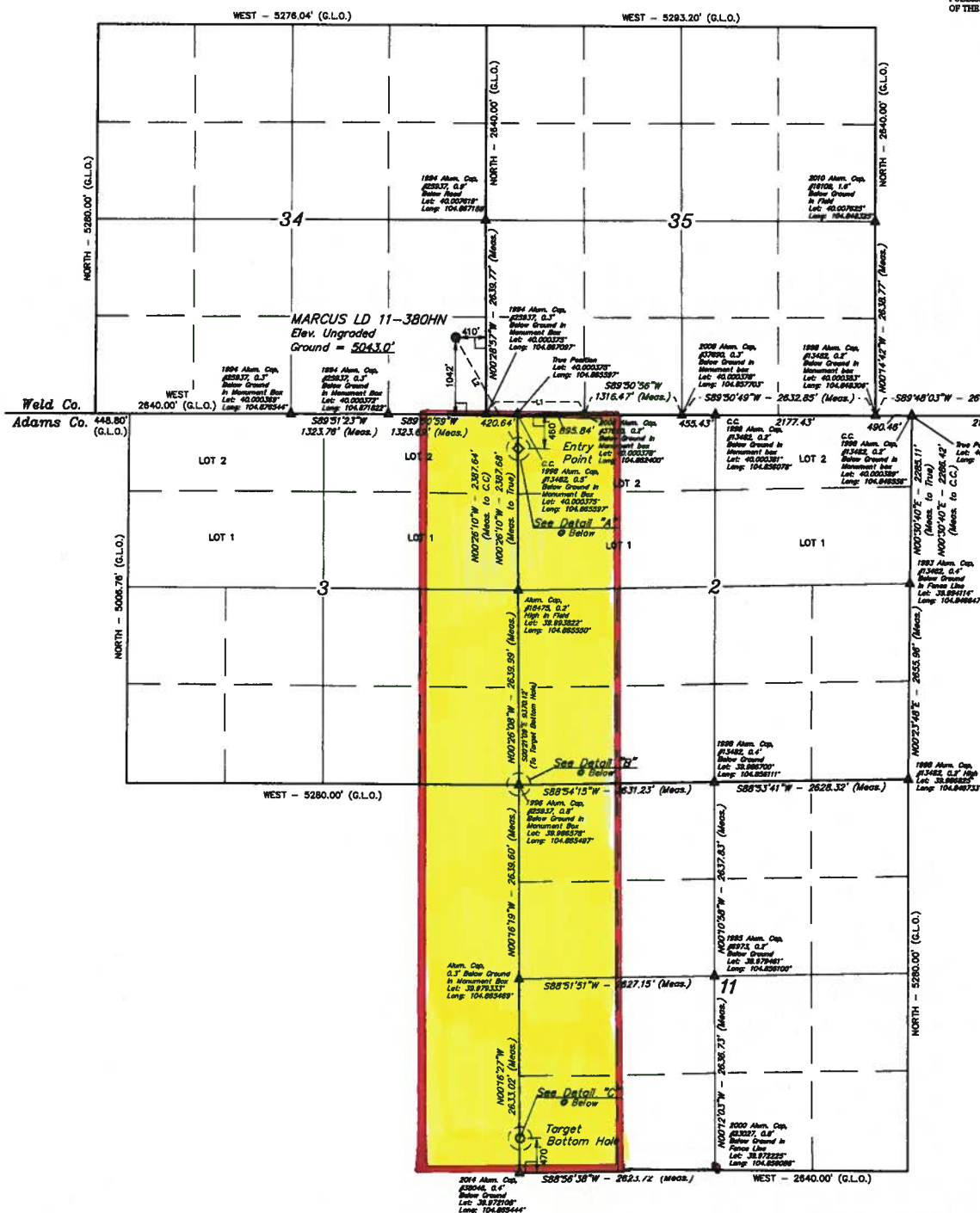
LEGEND:
 - 10' SYMBOL
 - PROPOSED WELLHEAD
 - ENTRY POINT
 - TARGET BOTTOM HOLE
 - SECTION CORNERS LOCATED

T1N, R67W, 6th P.M.



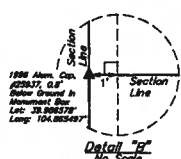
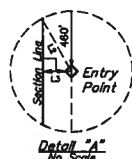
BASIS OF BEARING
 BASIS OF BEARING IS A G.P.S. OBSERVATION

BASIS OF ELEVATION
 BENCHMARK IR 53 5226 LOCATED IN THE SW 1/4 SE 1/4 OF SECTION 18, T1N, R67W, 6th P.M. TAKEN FROM 1988 PUBLISHED DATUM BY THE UNITED STATES DEPARTMENT OF THE INTERIOR, GEOLOGICAL SURVEY AS BEING 5028 FEET.



SECTION LINE TABLE		
LINE	DIRECTION	LENGTH
L1	S89°51'31"W	1316.46' (MEAS.)

LINE TABLE		
LINE	DIRECTION	LENGTH
L2	S28°34'04"E	1733.82'
L3	S88°33'30"W	7.86'
L4	S88°43'33"W	7.86'



CERTIFICATE OF REGISTRATION
 THIS IS TO CERTIFY THAT THE ABOVE SIGNED AND SEALED INSTRUMENT IS A TRUE AND CORRECT COPY OF THE ORIGINAL INSTRUMENT AS FILED IN THE PUBLIC RECORDS OF THE STATE OF UTAH.
 REGISTERED LAND SURVEYOR
 STATE OF UTAH
 EXPIRATION DATE 12-31-14

GREAT WESTERN OIL & GAS COMPANY
 MARCUS LD 11-380HN
 SE 1/4 SE 1/4, SECTION 34, T1N, R67W, 6th P.M.
 WELD COUNTY, COLORADO

UPLS, LLC
 Corporate Office • 85 South 200 East
 Vernal, UT 84078 • (435) 785-1817

UINTECH
 SURVEYED BY JARED CHRISTOPHER, L.C. DATE 11-26-14
 DRAWN BY J.W. DATE DRAWN 12-1-14
 SCALE 1" = 1000' REVISION: 02-25-20

WELL LOCATION PLAN

NAD 83 ENTRY POINT		NAD 83 BURNING LOCATION	
LATITUDE = 39°54'23" (39.90389)	LATITUDE = 39°54'21" (39.90114)	LATITUDE = 39°54'11" (39.90333)	LATITUDE = 39°54'11" (39.90333)
LONGITUDE = 104°51'15" (104.85400)	LONGITUDE = 104°51'15" (104.85400)	LONGITUDE = 104°51'15" (104.85400)	LONGITUDE = 104°51'15" (104.85400)
NAD 83 TARGET BOTTOM HOLE	NAD 83 ENTRY POINT	NAD 83 BURNING LOCATION	NAD 83 BURNING LOCATION
LATITUDE = 39°54'23" (39.90389)	LATITUDE = 39°54'21" (39.90114)	LATITUDE = 39°54'11" (39.90333)	LATITUDE = 39°54'11" (39.90333)
LONGITUDE = 104°51'15" (104.85400)	LONGITUDE = 104°51'15" (104.85400)	LONGITUDE = 104°51'15" (104.85400)	LONGITUDE = 104°51'15" (104.85400)