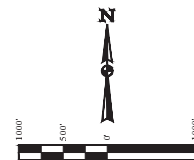


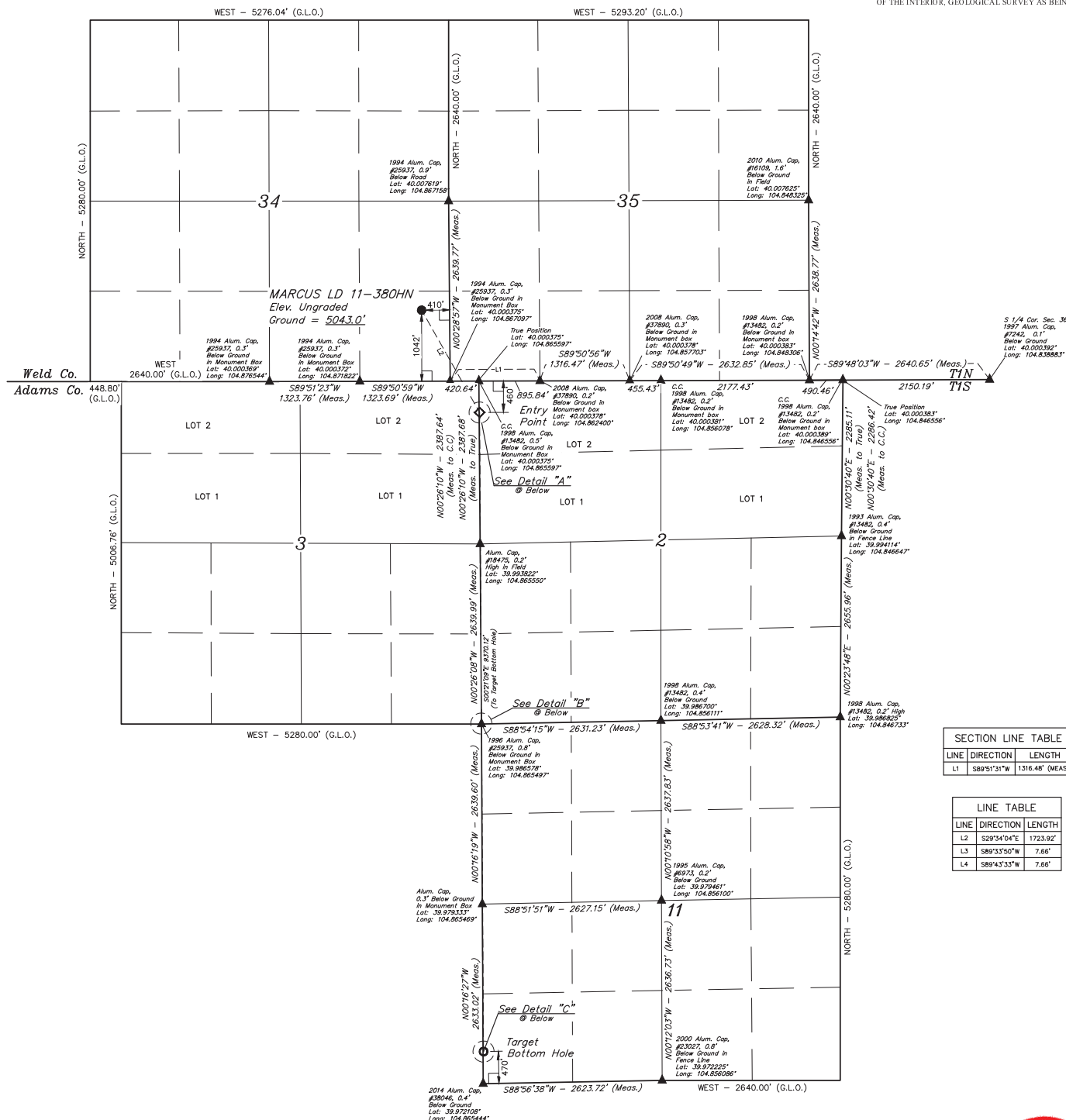
- LEGEND:**
- 90° SYMBOL
 - PROPOSED WELLHEAD
 - ENTRY POINT
 - TARGET BOTTOM HOLE
 - SECTION CORNERS LOCATED

T1N, R67W, 6th P.M.



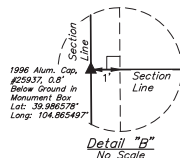
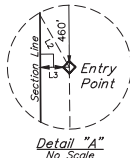
BASIS OF BEARINGS
BASIS OF BEARINGS IS A G.P.S. OBSERVATION

BASIS OF ELEVATION
BENCHMARK IR 53 5026 LOCATED IN THE SW 1/4 SE 1/4 OF SECTION 18, T1N, R68W, 6th P.M., TAKEN FROM 1988 PUBLISHED DATUM BY THE UNITED STATES DEPARTMENT OF THE INTERIOR, GEOLOGICAL SURVEY AS BEING 5028 FEET



SECTION LINE TABLE		
LINE	DIRECTION	LENGTH
L1	S89°51'31"W	1316.48' (MEAS.)

LINE TABLE		
LINE	DIRECTION	LENGTH
L2	S29°54'04"E	1723.92'
L3	S89°33'50"W	7.66'
L4	S89°43'33"W	7.66'



CERTIFICATE OF RECORD
THIS IS TO CERTIFY THAT THE ABOVE DESCRIBED SURVEY WAS MADE IN ACCORDANCE WITH THE NOTES OF ACTUAL SURVEYS MADE BY ME AND UNDER MY SUPERVISION AND THAT THE SAME ARE TRUE AND CORRECT TO THE BEST OF MY KNOWLEDGE AND BELIEF.
JARED CHRISTOPHER, J.C.
REGISTERED LAND SURVEYOR
RECORDING NO. 24233
STATUTORY SEAL EXPIRATION DATE 11-30-14

GREAT WESTERN OIL & GAS COMPANY
MARCUS LD 11-380HN
SE 1/4 SE 1/4, SECTION 34, T1N, R67W, 6th P.M.
WELD COUNTY, COLORADO

UELS, LLC
Corporate Office • 85 South 200 East
Vernal, UT 84078 • (435) 789-1817



SURVEYED BY: JARED CHRISTOPHER, J.C. DATE: 11-30-14
DRAWN BY: J.W. DATE DRAWN: 12-01-14
SCALE: 1" = 1000' REVISED: 00-00-00

WELL LOCATION PLAT

NAD83 (TARGET BOTTOM HOLE)	NAD83 (ENTRY POINT)	NAD83 (SURFACE LOCATION)
LATITUDE = 39°58'24.23" (39.973397)	LATITUDE = 39°59'56.81" (39.999141)	LATITUDE = 40°00'11.64" (40.00233)
LONGITUDE = 104°51'55.52" (104.864822)	LONGITUDE = 104°51'56.02" (104.86556)	LONGITUDE = 104°52'06.91" (104.86856)
NAD83 (TARGET BOTTOM HOLE)	NAD83 (ENTRY POINT)	NAD83 (SURFACE LOCATION)
LATITUDE = 39°58'24.23" (39.973397)	LATITUDE = 39°59'56.81" (39.999141)	LATITUDE = 40°00'11.64" (40.00233)
LONGITUDE = 104°51'55.52" (104.864822)	LONGITUDE = 104°51'56.02" (104.86556)	LONGITUDE = 104°52'06.91" (104.86856)