

1801 Broadway
Suite 500
Denver, Colorado 80202



Callie Fiddes
Regulatory Technician
Tel: 303.398.0550
E-mail: cfiddes@gwogco.com

January 9, 2015

Colorado Oil and Gas Conservation Commission
1120 Lincoln Street, Suite 801
Denver, Colorado 80203

RE: **Proposed Wellbore Spacing Unit**
Marcus LD 02-379HN

Niobrara New Drill
Township 1 North, Range 67 West, 6th P.M.
Section 34
Weld County, Colorado

Dear Director:

Great Western Operating Company, LLC is planning to drill the above captioned well in accordance with the provisions of COGCC Rule 318A.e.

Great Western proposed wellbore spacing unit consists of:

- **W2W2 Sec 2; E2E2 Sec 3; E2E2 Sec 10; W2W2 Sec 11**
- **640 Acres**

The 30 day notification time period has passed and we have resolved any objections to such well locations or proposed spacing unit, therefore Great Western hereby requests the Director to approve the above mentioned well. Great Western Operating Company, LLC respectfully requests that the COGCC review the enclosed map illustrating the proposed wellbore spacing unit.

Respectfully,

Callie Fiddes

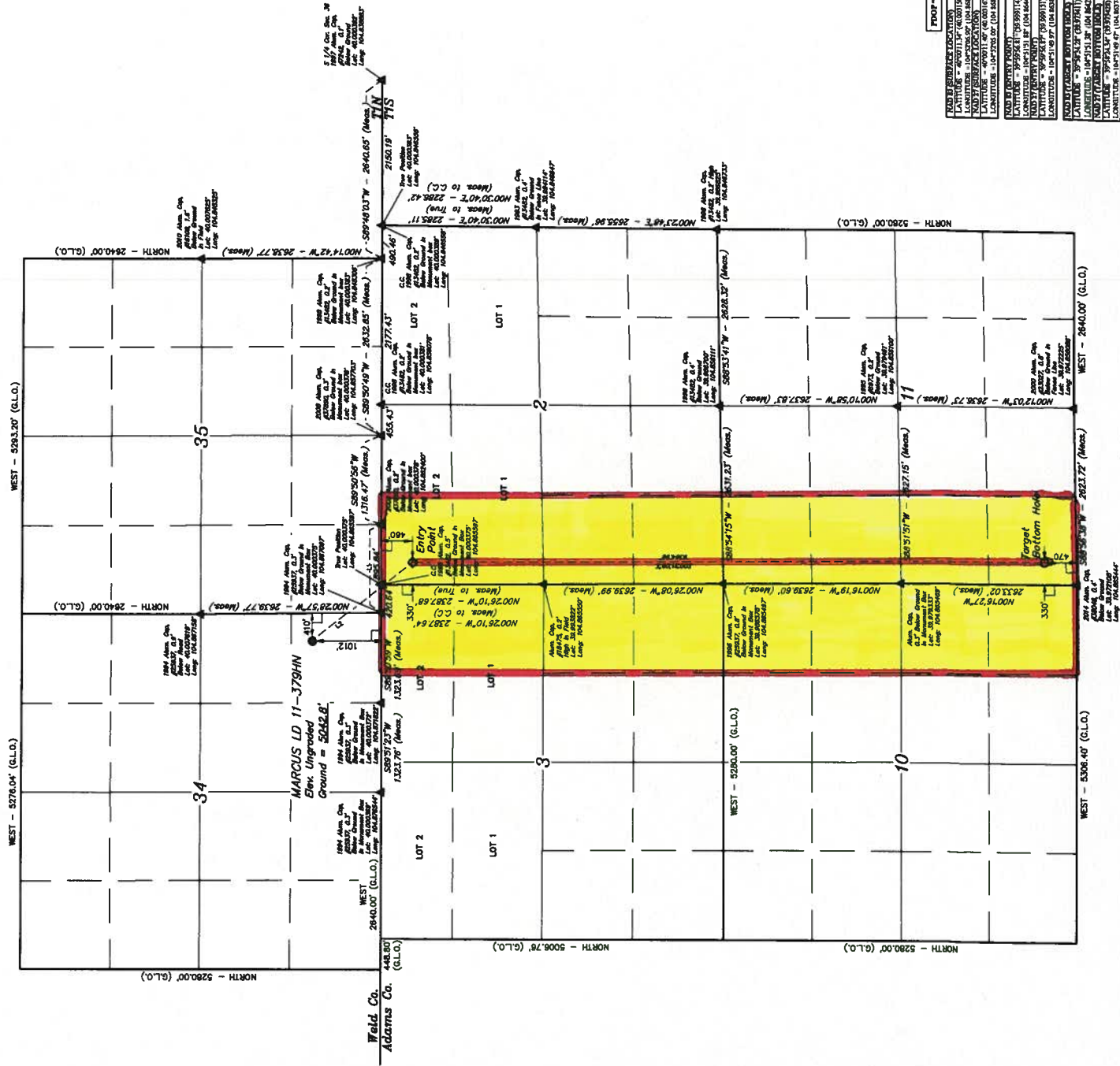
Callie Fiddes
Regulatory Technician
Great Western Operating Company, LLC

T1N, R67W, 6th P.M.

LEGEND:
- BY SYMBOL
- PROPOSED WELLHEAD
- ENTRY POINT
- TARGET BOTTOM HOLE
- LOCATION



BASES OF BEARINGS
BASE OF BEARINGS IS A GPS OBSERVATION
BENCHMARK JR 53 906 LOCATED IN THE SW 1/4 SE 1/4
OF SECTION 18, T1N, R67W, 6th P.M., TAKEN FROM 1988
PUBLISHED DATUM BY THE UNITED STATES DEPARTMENT
OF THE INTERIOR, GEOLOGICAL SURVEY AS BEING 5028 FEET.



SECTION LINE TABLE	
LINE	LENGTH
L1	5897.31' W - 2640.00' (G.L.O.)
L2	5897.31' W - 2640.00' (G.L.O.)

LINE TABLE	
LINE	DIRECTION
L1	5897.31' W - 2640.00' (G.L.O.)
L2	5897.31' W - 2640.00' (G.L.O.)



GREAT WESTERN OIL & GAS COMPANY
MARCUS LD 11-3794N
SE 1/4 SE 1/4, SECTION 24, T1N, R67W, 6th P.M.
WELD COUNTY, COLORADO

UPLS, LLC
Corporate Office: 25 South 200 East
Vernal, UT 84058 - (435) 765-1877
UPLS
SERVED BY: JARED CHRISTENSEN, L.C. DATE: 11-20-14
DRAWN BY: J.W. DATE: 11-20-14
SCALE: 1" = 800' REVISED: 11-13-14

PROOF - L4	
NAD 83 SURVEY LOCATIONS	
POINT	COORDINATES
POINT 1	400011.14' (NAD 83)
POINT 2	400011.14' (NAD 83)
POINT 3	400011.14' (NAD 83)
POINT 4	400011.14' (NAD 83)
POINT 5	400011.14' (NAD 83)
POINT 6	400011.14' (NAD 83)
POINT 7	400011.14' (NAD 83)
POINT 8	400011.14' (NAD 83)
POINT 9	400011.14' (NAD 83)
POINT 10	400011.14' (NAD 83)
POINT 11	400011.14' (NAD 83)
POINT 12	400011.14' (NAD 83)
POINT 13	400011.14' (NAD 83)
POINT 14	400011.14' (NAD 83)
POINT 15	400011.14' (NAD 83)
POINT 16	400011.14' (NAD 83)
POINT 17	400011.14' (NAD 83)
POINT 18	400011.14' (NAD 83)
POINT 19	400011.14' (NAD 83)
POINT 20	400011.14' (NAD 83)
POINT 21	400011.14' (NAD 83)
POINT 22	400011.14' (NAD 83)
POINT 23	400011.14' (NAD 83)
POINT 24	400011.14' (NAD 83)
POINT 25	400011.14' (NAD 83)
POINT 26	400011.14' (NAD 83)
POINT 27	400011.14' (NAD 83)
POINT 28	400011.14' (NAD 83)
POINT 29	400011.14' (NAD 83)
POINT 30	400011.14' (NAD 83)
POINT 31	400011.14' (NAD 83)
POINT 32	400011.14' (NAD 83)
POINT 33	400011.14' (NAD 83)
POINT 34	400011.14' (NAD 83)
POINT 35	400011.14' (NAD 83)
POINT 36	400011.14' (NAD 83)
POINT 37	400011.14' (NAD 83)
POINT 38	400011.14' (NAD 83)
POINT 39	400011.14' (NAD 83)
POINT 40	400011.14' (NAD 83)
POINT 41	400011.14' (NAD 83)
POINT 42	400011.14' (NAD 83)
POINT 43	400011.14' (NAD 83)
POINT 44	400011.14' (NAD 83)
POINT 45	400011.14' (NAD 83)
POINT 46	400011.14' (NAD 83)
POINT 47	400011.14' (NAD 83)
POINT 48	400011.14' (NAD 83)
POINT 49	400011.14' (NAD 83)
POINT 50	400011.14' (NAD 83)
POINT 51	400011.14' (NAD 83)
POINT 52	400011.14' (NAD 83)
POINT 53	400011.14' (NAD 83)
POINT 54	400011.14' (NAD 83)
POINT 55	400011.14' (NAD 83)
POINT 56	400011.14' (NAD 83)
POINT 57	400011.14' (NAD 83)
POINT 58	400011.14' (NAD 83)
POINT 59	400011.14' (NAD 83)
POINT 60	400011.14' (NAD 83)
POINT 61	400011.14' (NAD 83)
POINT 62	400011.14' (NAD 83)
POINT 63	400011.14' (NAD 83)
POINT 64	400011.14' (NAD 83)
POINT 65	400011.14' (NAD 83)
POINT 66	400011.14' (NAD 83)
POINT 67	400011.14' (NAD 83)
POINT 68	400011.14' (NAD 83)
POINT 69	400011.14' (NAD 83)
POINT 70	400011.14' (NAD 83)
POINT 71	400011.14' (NAD 83)
POINT 72	400011.14' (NAD 83)
POINT 73	400011.14' (NAD 83)
POINT 74	400011.14' (NAD 83)
POINT 75	400011.14' (NAD 83)
POINT 76	400011.14' (NAD 83)
POINT 77	400011.14' (NAD 83)
POINT 78	400011.14' (NAD 83)
POINT 79	400011.14' (NAD 83)
POINT 80	400011.14' (NAD 83)
POINT 81	400011.14' (NAD 83)
POINT 82	400011.14' (NAD 83)
POINT 83	400011.14' (NAD 83)
POINT 84	400011.14' (NAD 83)
POINT 85	400011.14' (NAD 83)
POINT 86	400011.14' (NAD 83)
POINT 87	400011.14' (NAD 83)
POINT 88	400011.14' (NAD 83)
POINT 89	400011.14' (NAD 83)
POINT 90	400011.14' (NAD 83)
POINT 91	400011.14' (NAD 83)
POINT 92	400011.14' (NAD 83)
POINT 93	400011.14' (NAD 83)
POINT 94	400011.14' (NAD 83)
POINT 95	400011.14' (NAD 83)
POINT 96	400011.14' (NAD 83)
POINT 97	400011.14' (NAD 83)
POINT 98	400011.14' (NAD 83)
POINT 99	400011.14' (NAD 83)
POINT 100	400011.14' (NAD 83)