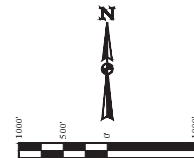


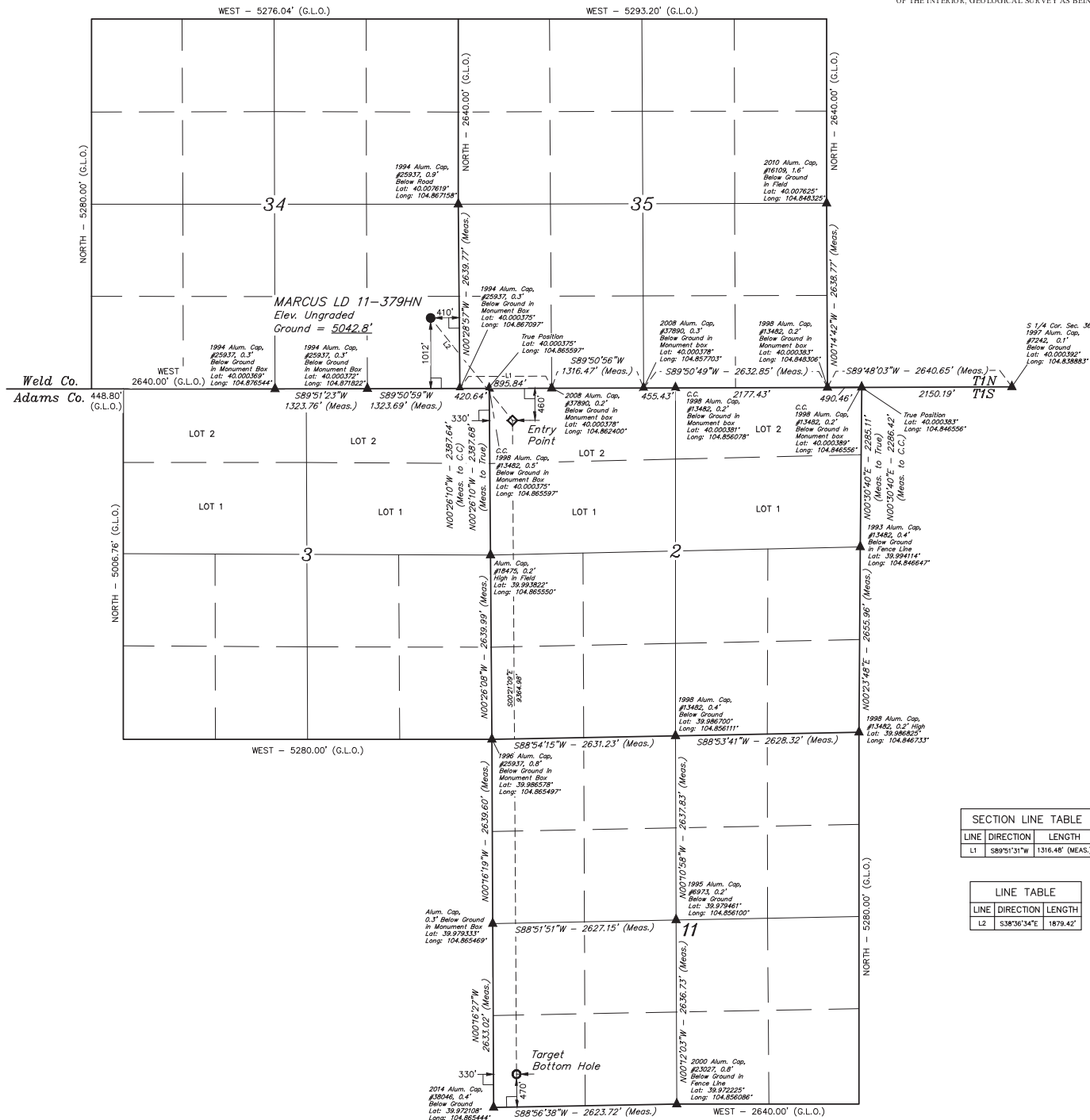
**LEGEND:**  
 — 90° SYMBOL  
 ● PROPOSED WELLHEAD  
 ○ ENTRY POINT  
 ○ TARGET BOTTOM HOLE  
 ▲ SECTION CORNERS LOCATED

T1N, R67W, 6th P.M.



**BASIS OF BEARINGS**  
 BASIS OF BEARINGS IS A G.P.S. OBSERVATION

**BASIS OF ELEVATION**  
 BENCHMARK IR 53 5026 LOCATED IN THE SW 1/4 SE 1/4 OF SECTION 18, T1N, R68W, 6th P.M., TAKEN FROM 1988 PUBLISHED DATUM BY THE UNITED STATES DEPARTMENT OF THE INTERIOR, GEOLOGICAL SURVEY AS BEING 5028 FEET



SECTION LINE TABLE		
LINE	DIRECTION	LENGTH
L1	S89°51'31"W	1316.48' (MEAS.)

LINE TABLE		
LINE	DIRECTION	LENGTH
L2	S38°36'34"E	1879.42'

CERTIFICATE OF RECORD  
 THIS IS TO CERTIFY THAT THE ABOVE DESCRIBED SURVEY WAS MADE BY ME OR UNDER MY SUPERVISION AND THAT THE SAME ARE TRUE AND CORRECT TO THE BEST OF MY KNOWLEDGE AND BELIEF.  
 JARED CHRISTOPHER, J.C.  
 REGISTERED LAND SURVEYOR  
 REG. NO. 24233  
 STATE OF COLORADO  
 14

**GREAT WESTERN OIL & GAS COMPANY**  
 MARCUS LD 11-379HN  
 SE 1/4 SE 1/4, SECTION 34, T1N, R67W, 6th P.M.  
 WELD COUNTY, COLORADO

**UELS, LLC**  
 Corporate Office • 85 South 200 East  
 Vernal, UT 84078 • (435) 789-1817

PDOP = 1.4

SAD 83 (TARGET BOTTOM HOLE)	SAD 27 (ENTRY POINT)	SAD 27 (SURFACE LOCATION)
LATITUDE = 39°58'24.38" (39.973411) LONGITUDE = 104°51'51.38" (104.864272)	LATITUDE = 39°59'56.81" (39.999144) LONGITUDE = 104°51'51.88" (104.864411)	LATITUDE = 40°00'11.34" (40.003150) LONGITUDE = 104°52'06.90" (104.868583)
SAD 27 (TARGET BOTTOM HOLE)	SAD 27 (ENTRY POINT)	SAD 27 (SURFACE LOCATION)
LATITUDE = 39°58'24.38" (39.973411) LONGITUDE = 104°51'51.38" (104.864272)	LATITUDE = 39°59'56.81" (39.999144) LONGITUDE = 104°51'51.88" (104.864411)	LATITUDE = 40°00'11.34" (40.003150) LONGITUDE = 104°52'06.90" (104.868583)



**WELL LOCATION PLAT**