

Mezintel *Measured Depth Log* 5"=100ft Feet

Oil Co:	Bonanza Creek	Oil Company:	Bonanza Creek
Well Name:	Pronghorn 14-11-4HNB	Well Name:	Pronghorn 14-11-4HNB
LSD:		LSD:	
State/Prov:	Colorado	State/Prov:	Colorado
Country:	U.S.A.	Country:	U.S.A.
Job #:	2009-364	Job #:	2009-364
		Drilling Co.	Cade
		Rig #:	21
		Co Rep 1:	Jason
		Co Rep 2:	
		Geologist 1:	
		Geologist 2:	
		DD 1:	Scott Summers
		DD 2:	Jeremy Addy
		MWD 1:	David Keele
		MWD 2:	David Barge
		MWD Kit:	12
Well Lic:			
API/UWI:			
AFE #:			

Casing Depths			MD		Depth		Date		KB:	0
Surface:			Start:		5000.00		8-5-14		GL:	0
Intermediate:			End:		10720.05				DF:	0
Run #	Hole Size (in)	Gamma Offset	Survey Offset	Depth Start	Depth End	Date Start	Date End			
01	8.75	42.00	47.00	0.00	5628.50	Aug 06, 14	Aug 08, 14			
02	8.75	35.00	40.00	5628.50	6682.00	Aug 08, 14	Aug 11, 14			
03	6 1/8	42.00	48.00	6682.00	10762.00	Aug 11, 14	Aug 13, 14			

Total Directional uses its best efforts to provide customers with accurate information on services performed but will not be held liable or responsible for accuracy of information or interpretation.

Notes:

Printed: Aug 13/2014 21:50

Client: Bonanza Creek

Well Name: Pronghorn 14-11-4HNB

API/UWI:

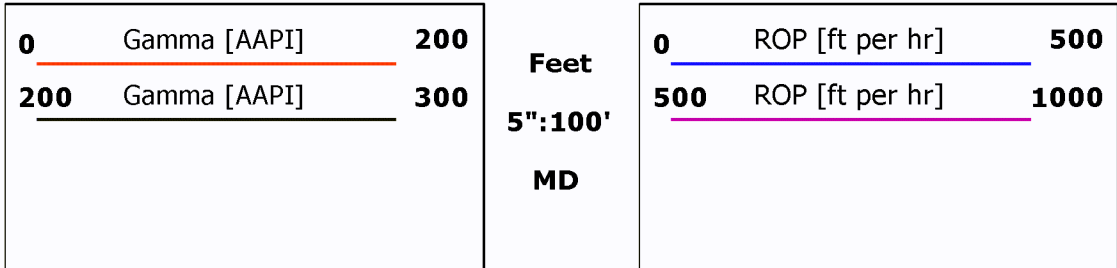
Well Lic:

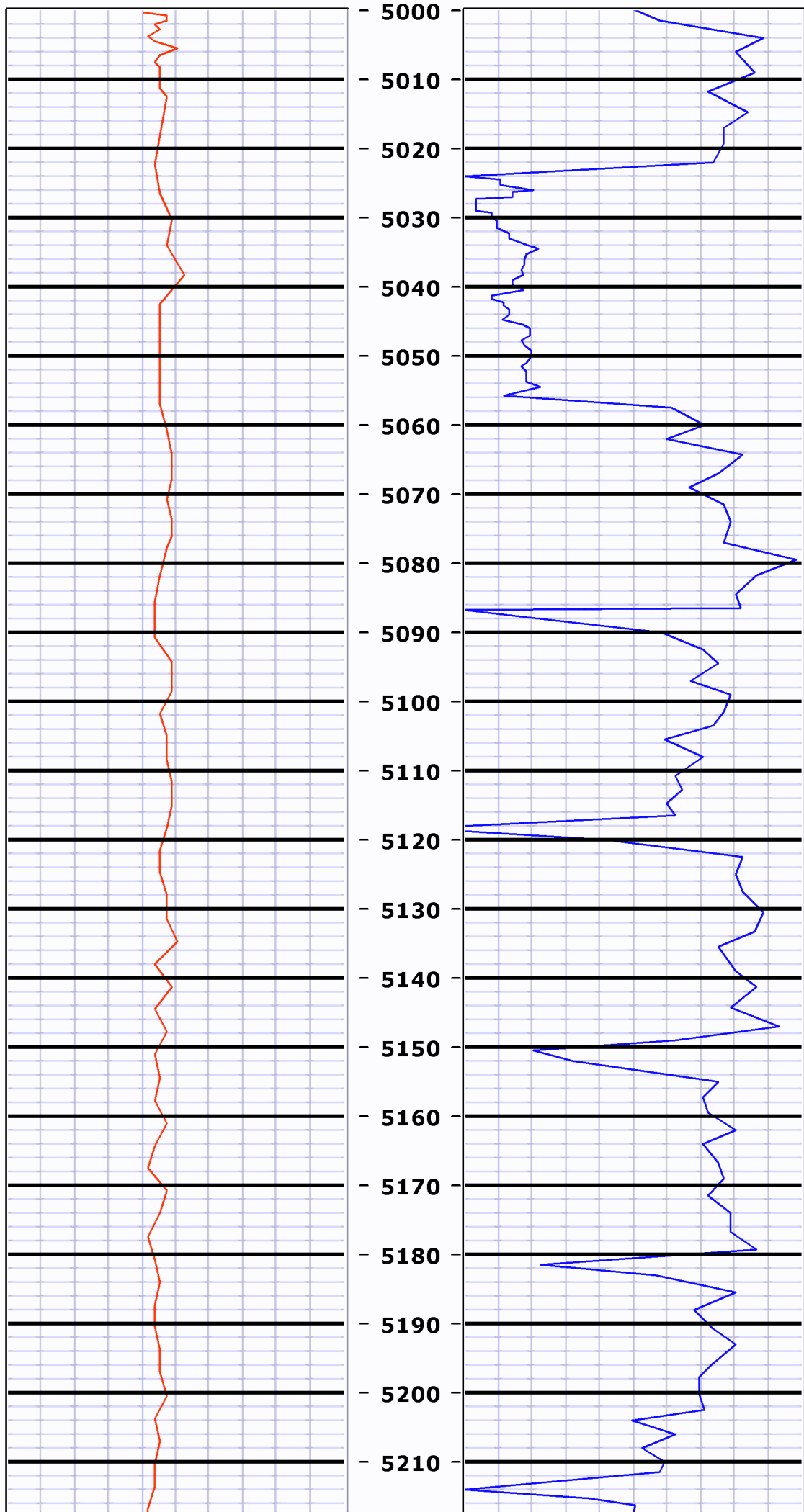
Surface LSD: KB: 0

State/Prov: Colorado Job #: 2009-364 GL: 0

Country: U.S.A. MWD Kit: 12 DF: 0

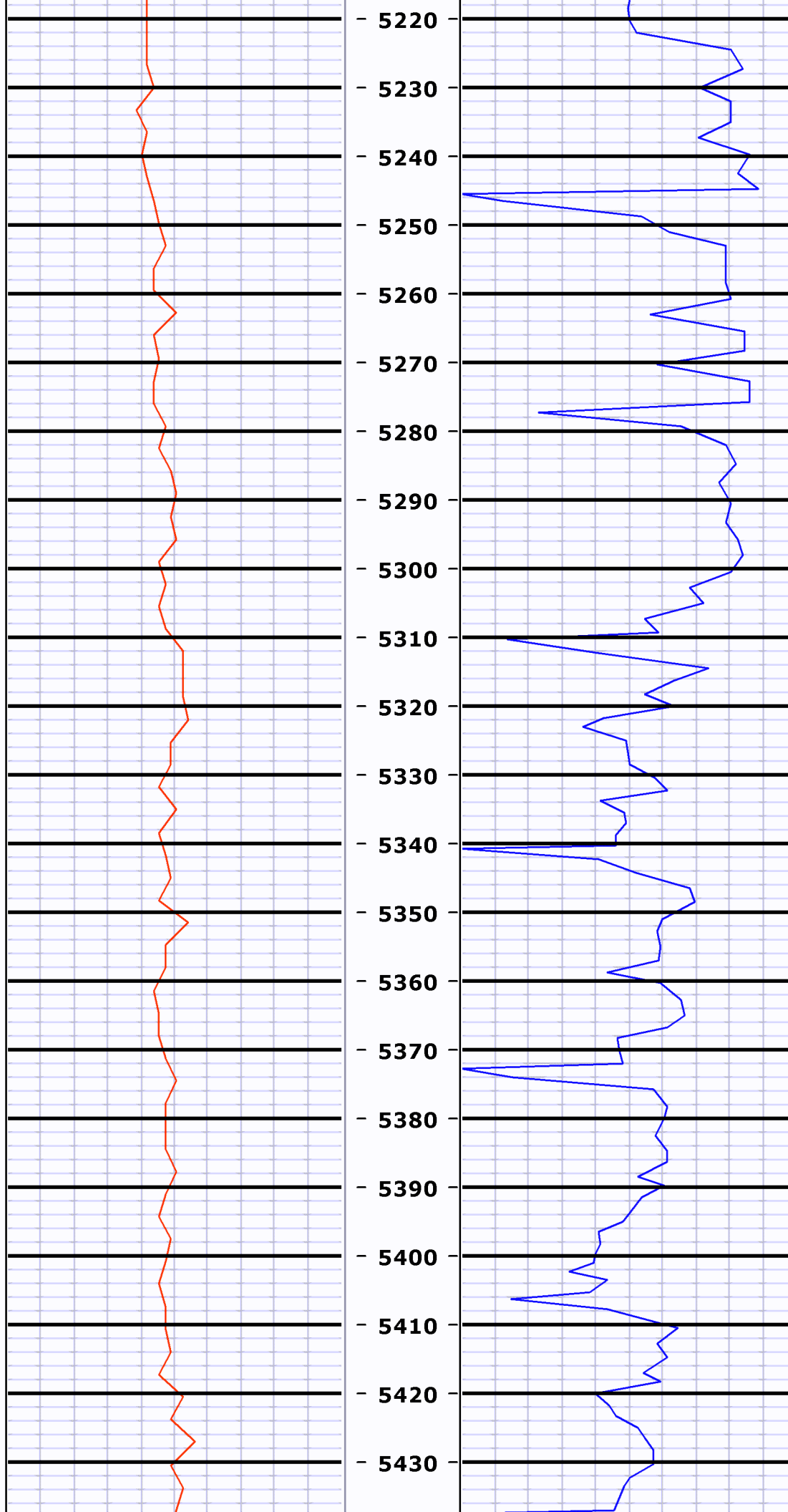
Mezintel





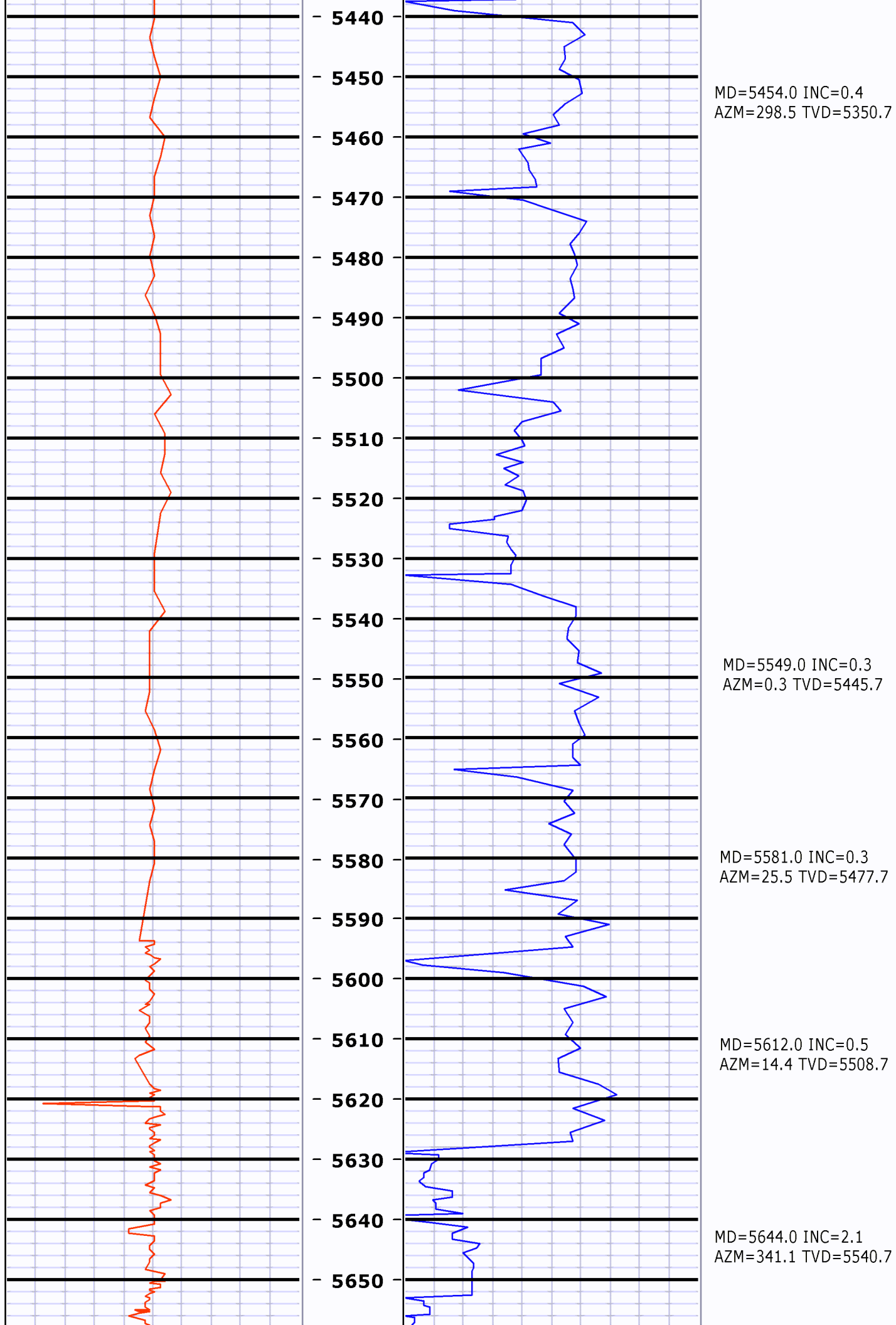
MD=5071.0 INC=4.2
AZM=259.6 TVD=4967.9

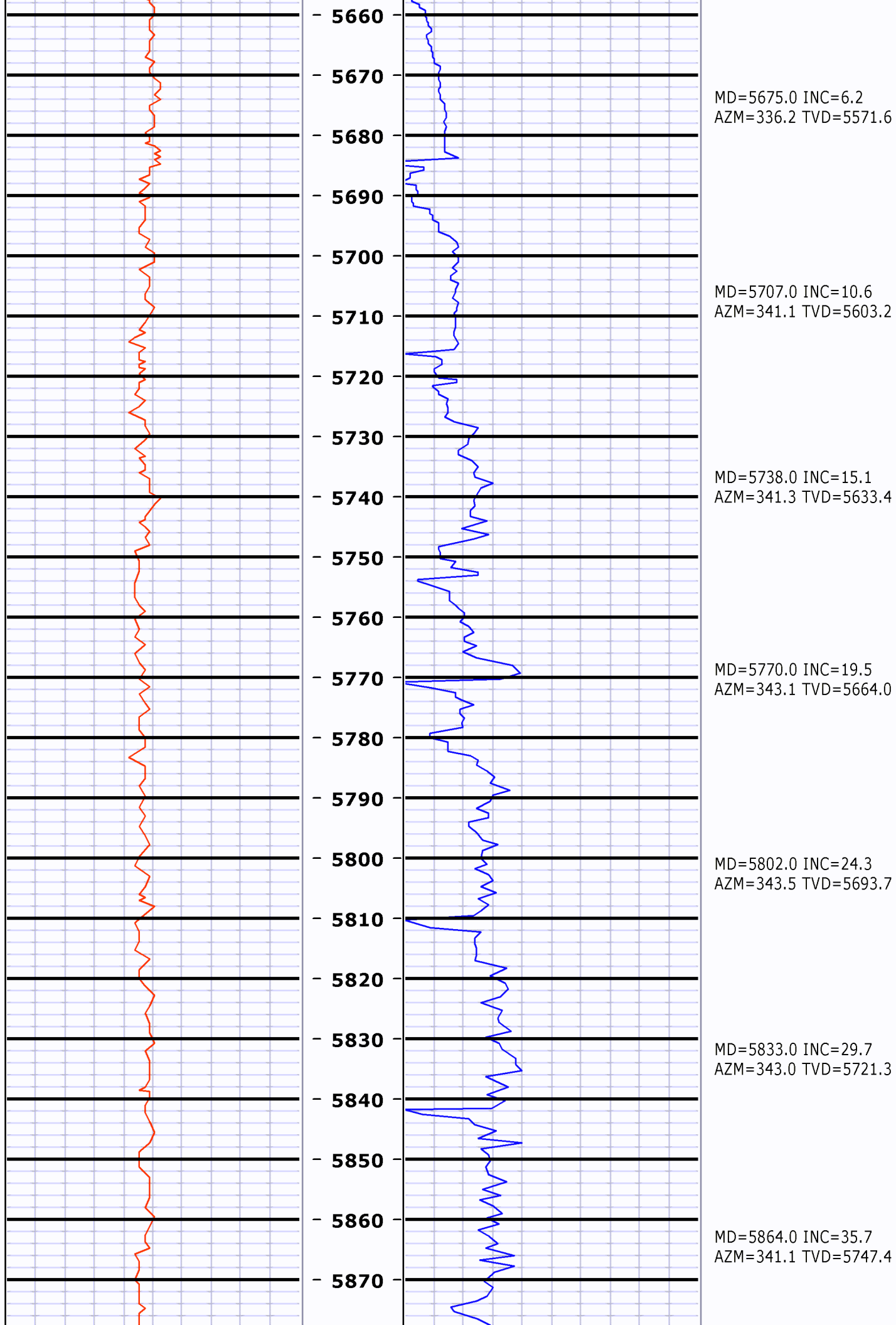
MD=5166.0 INC=2.4
AZM=266.9 TVD=5062.8

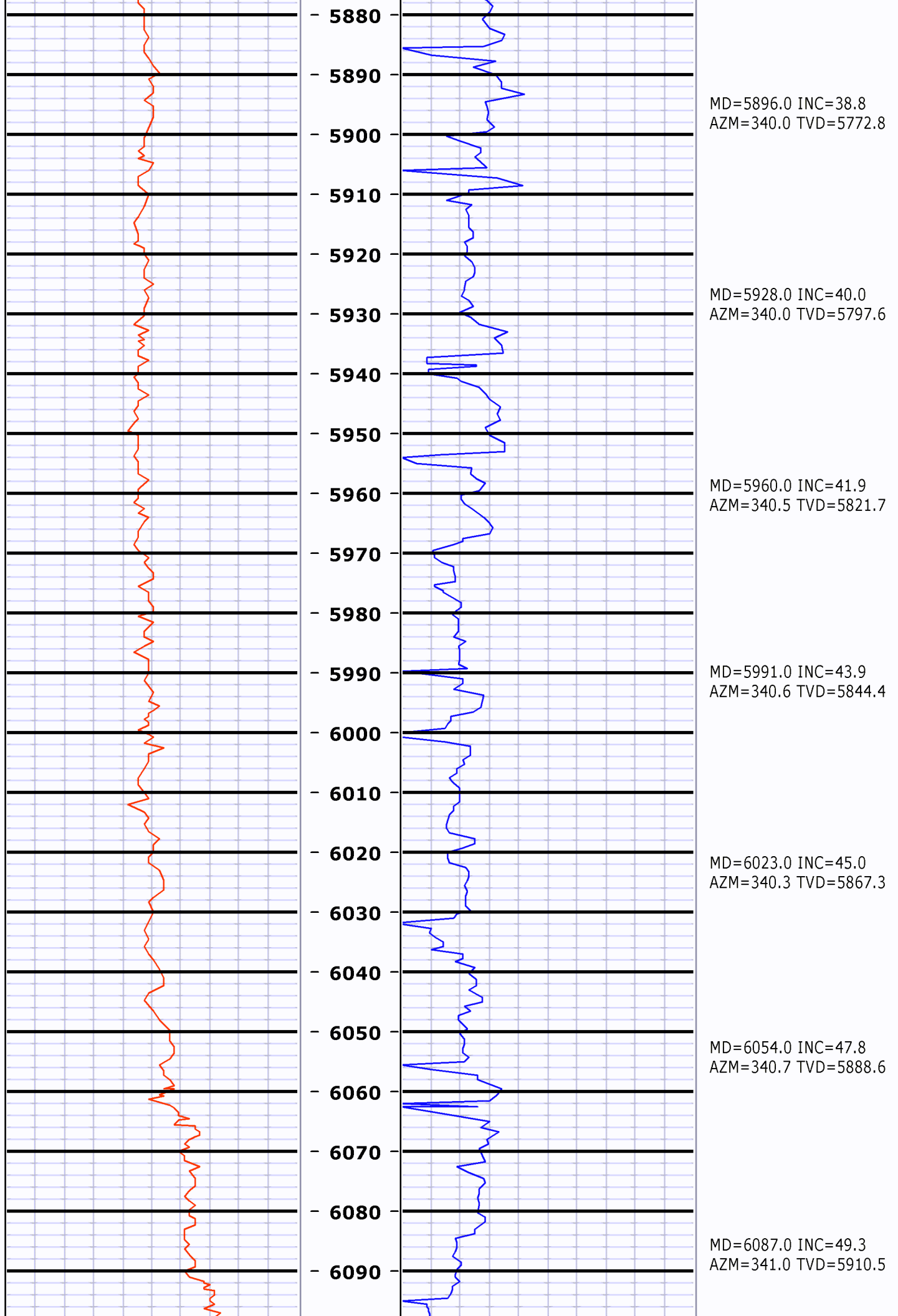


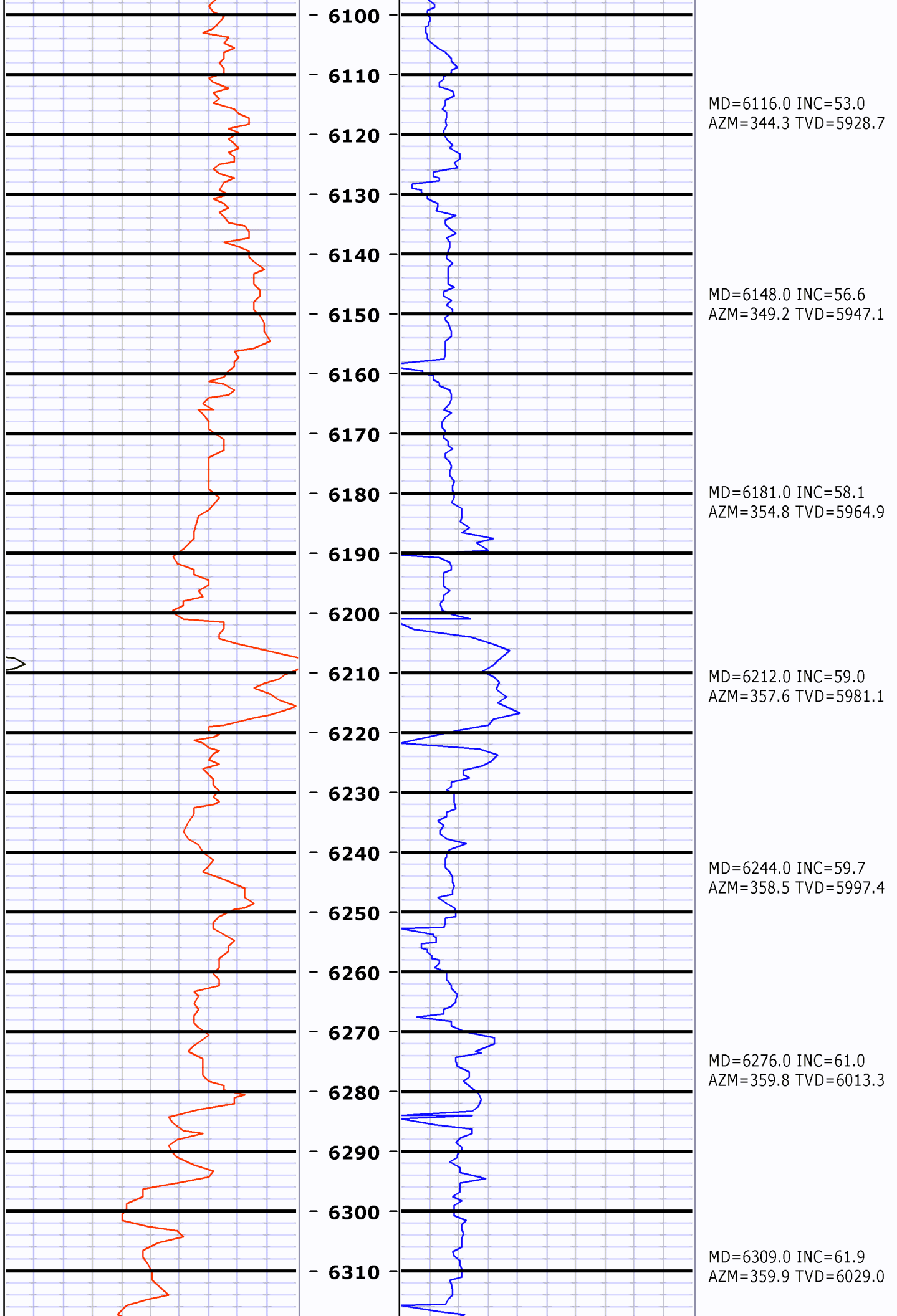
MD=5262.0 INC=1.7
AZM=269.4 TVD=5158.7

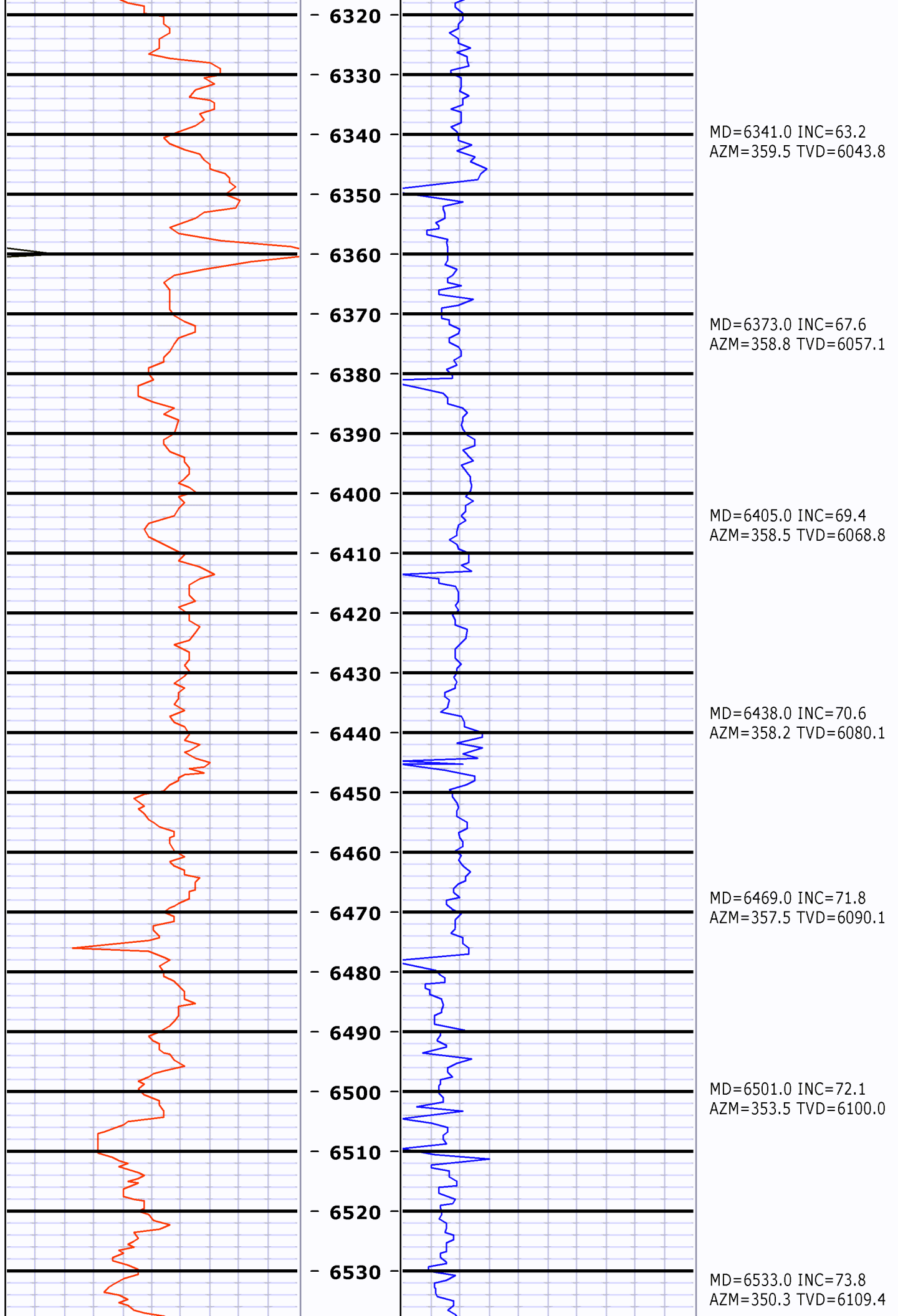
MD=5358.0 INC=0.8
AZM=280.7 TVD=5254.7

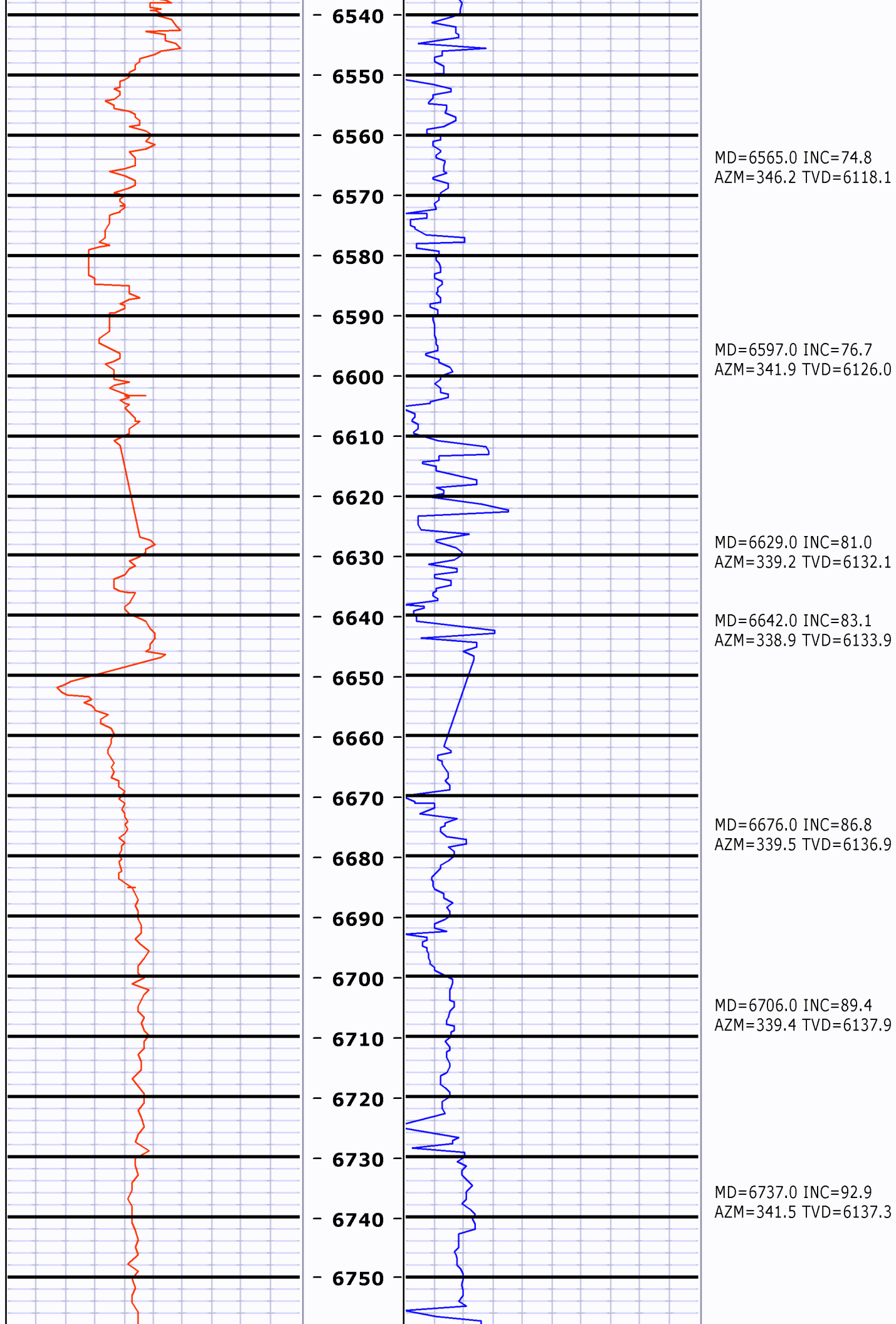


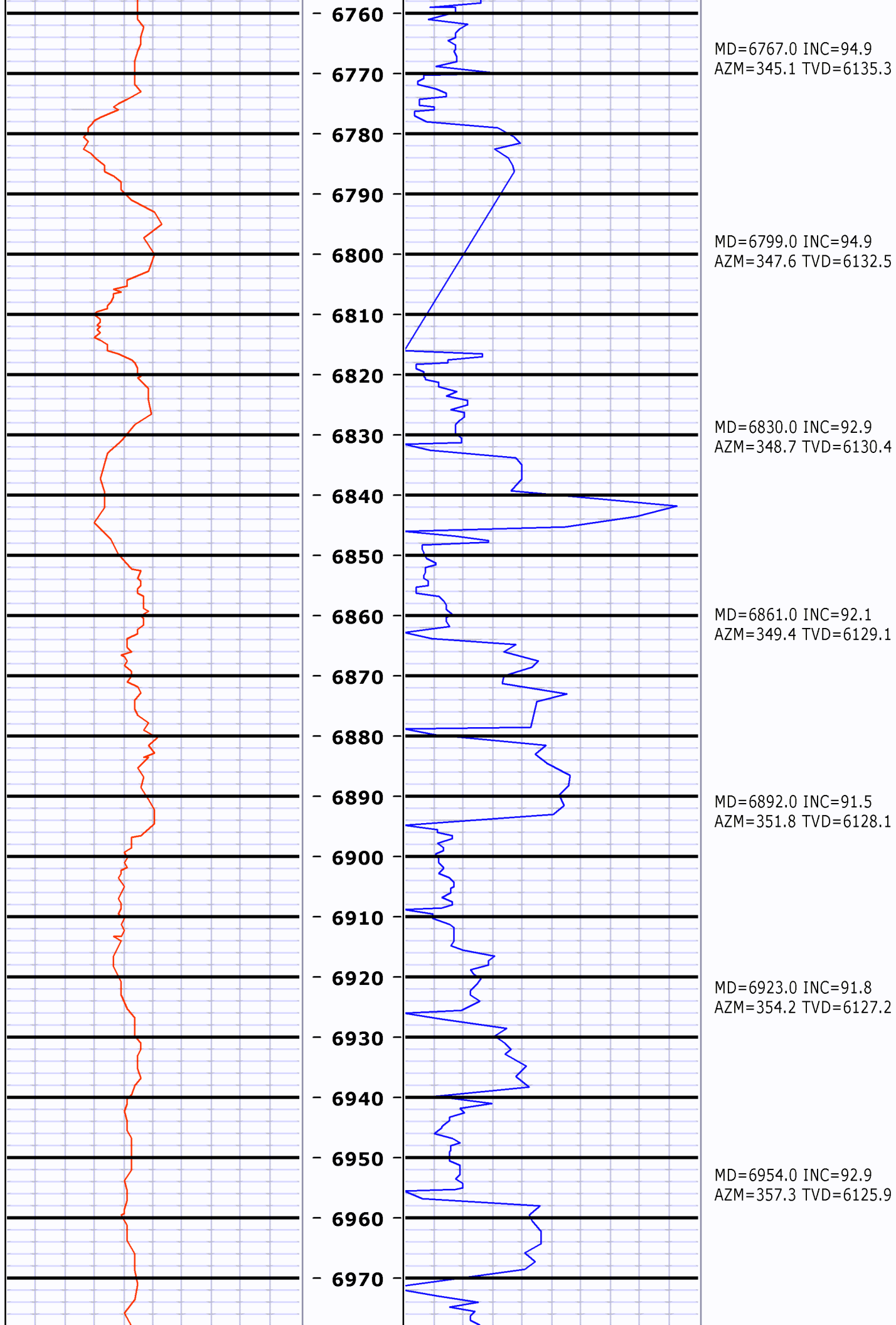


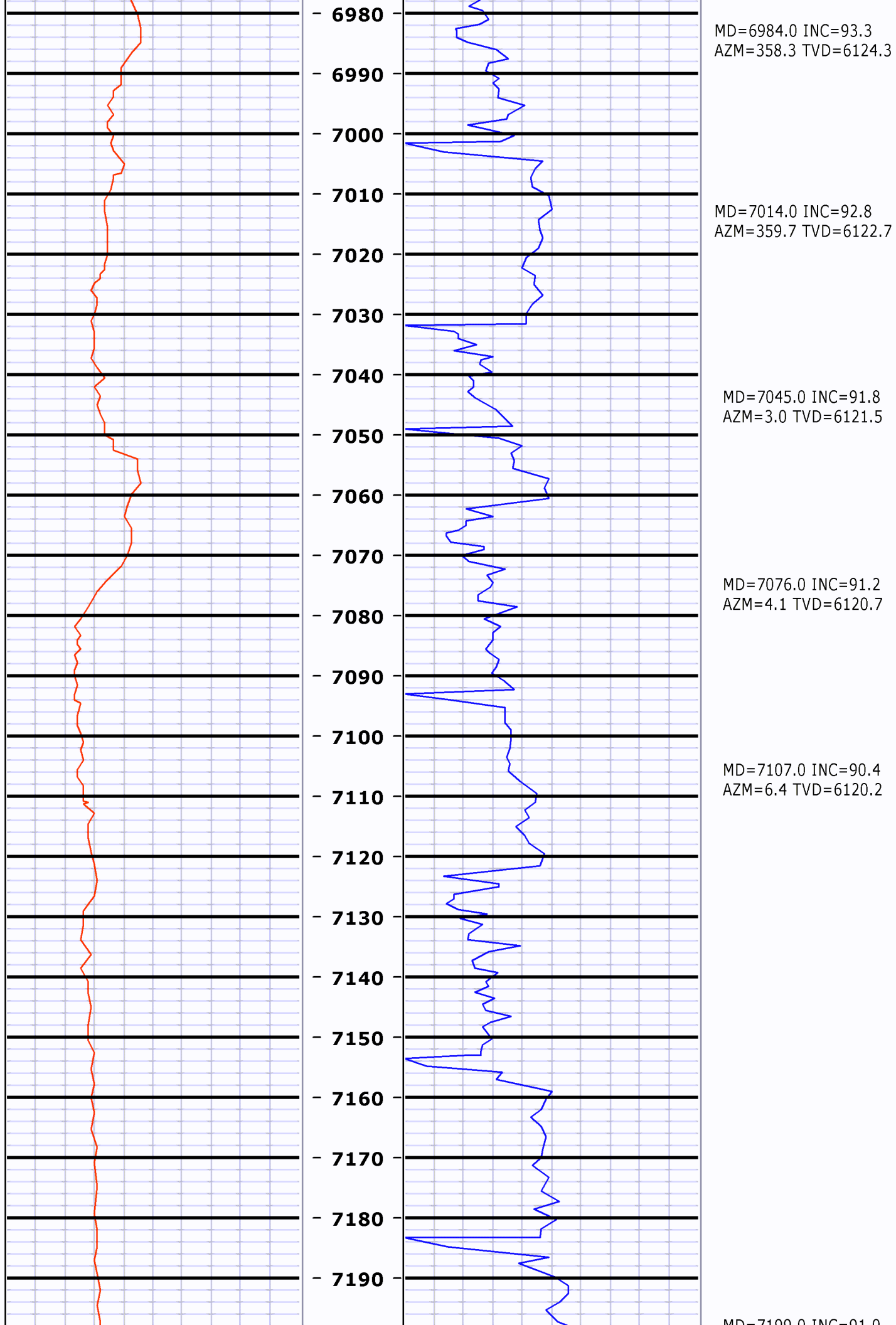


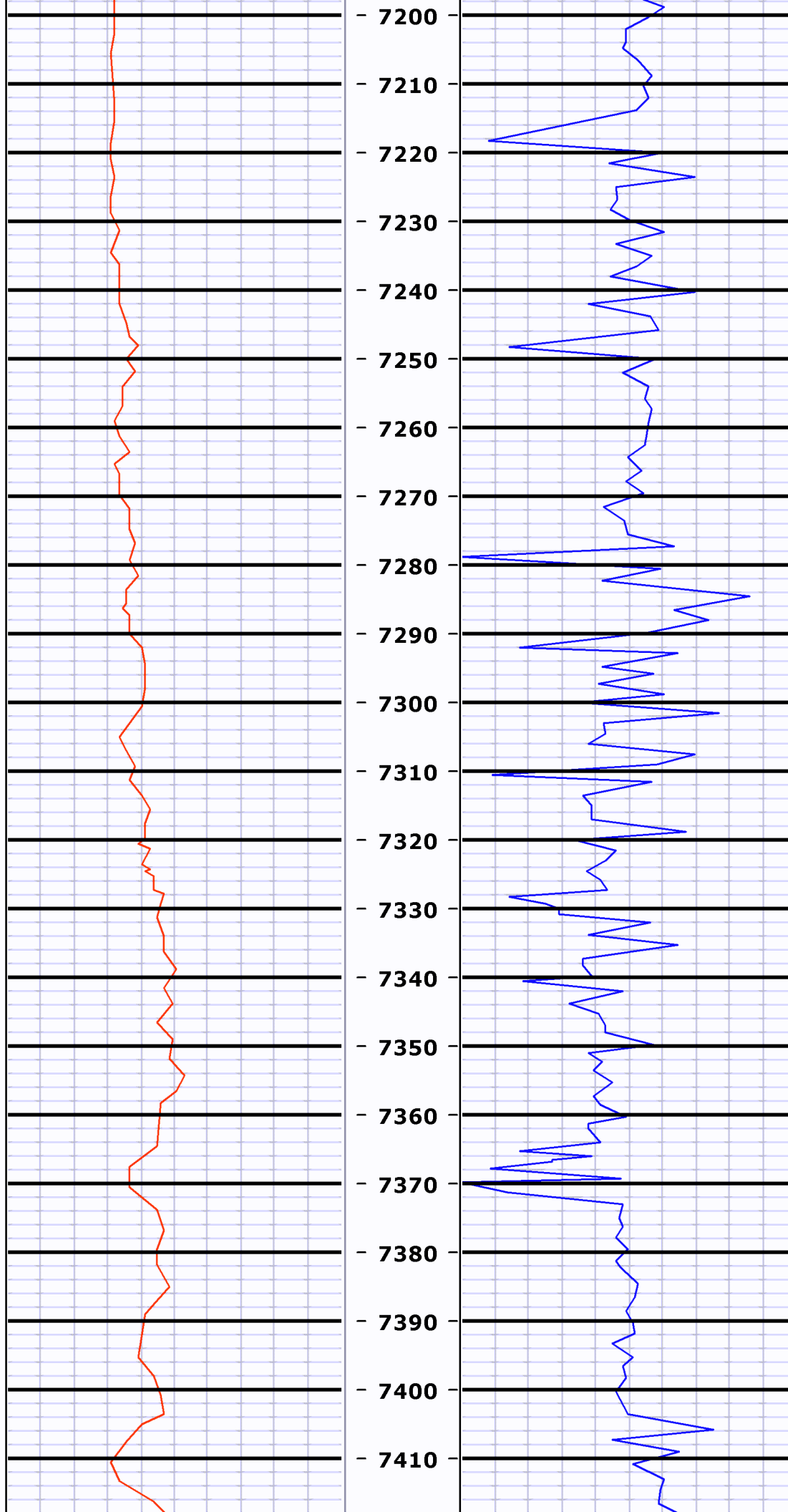








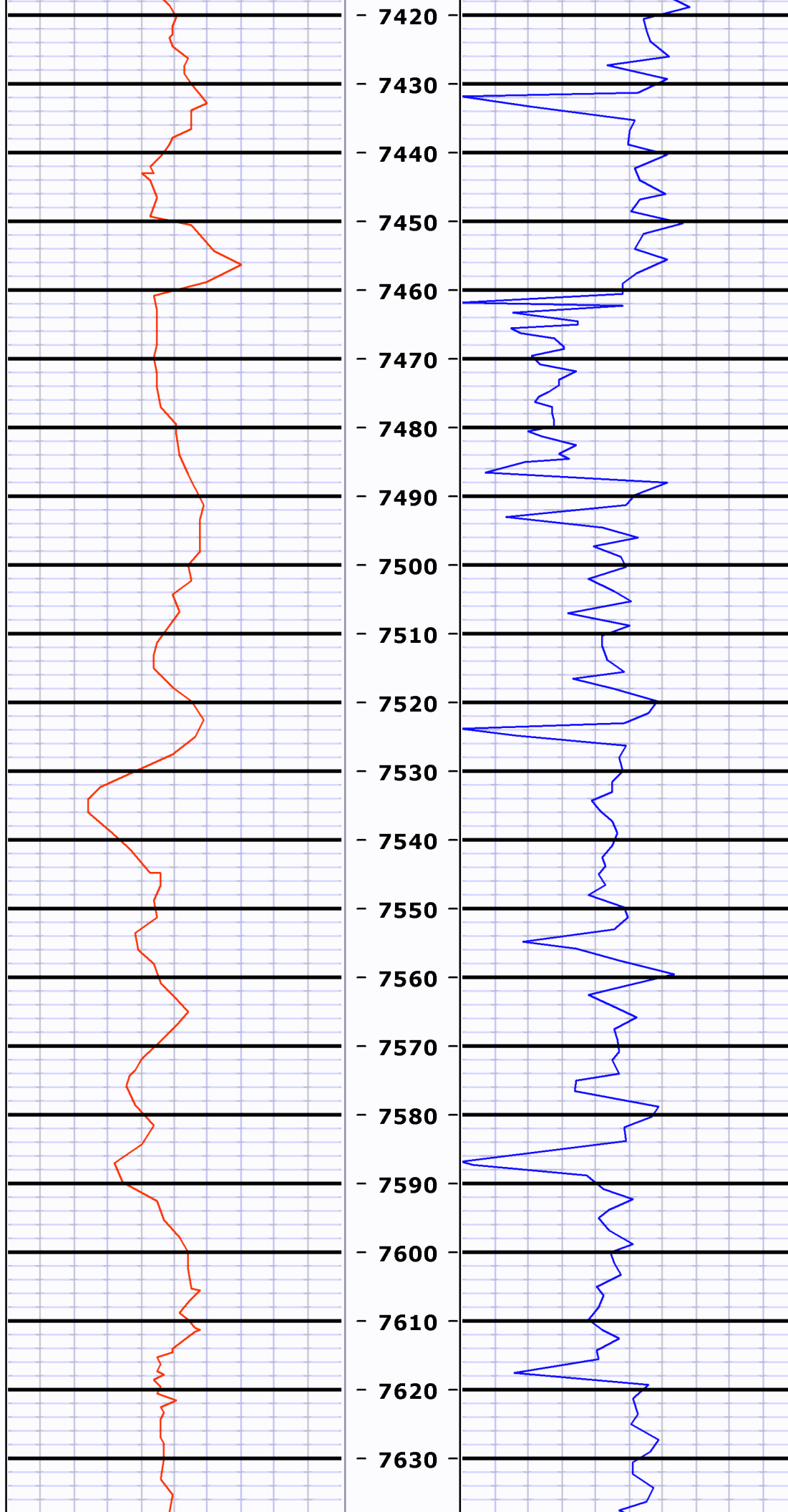


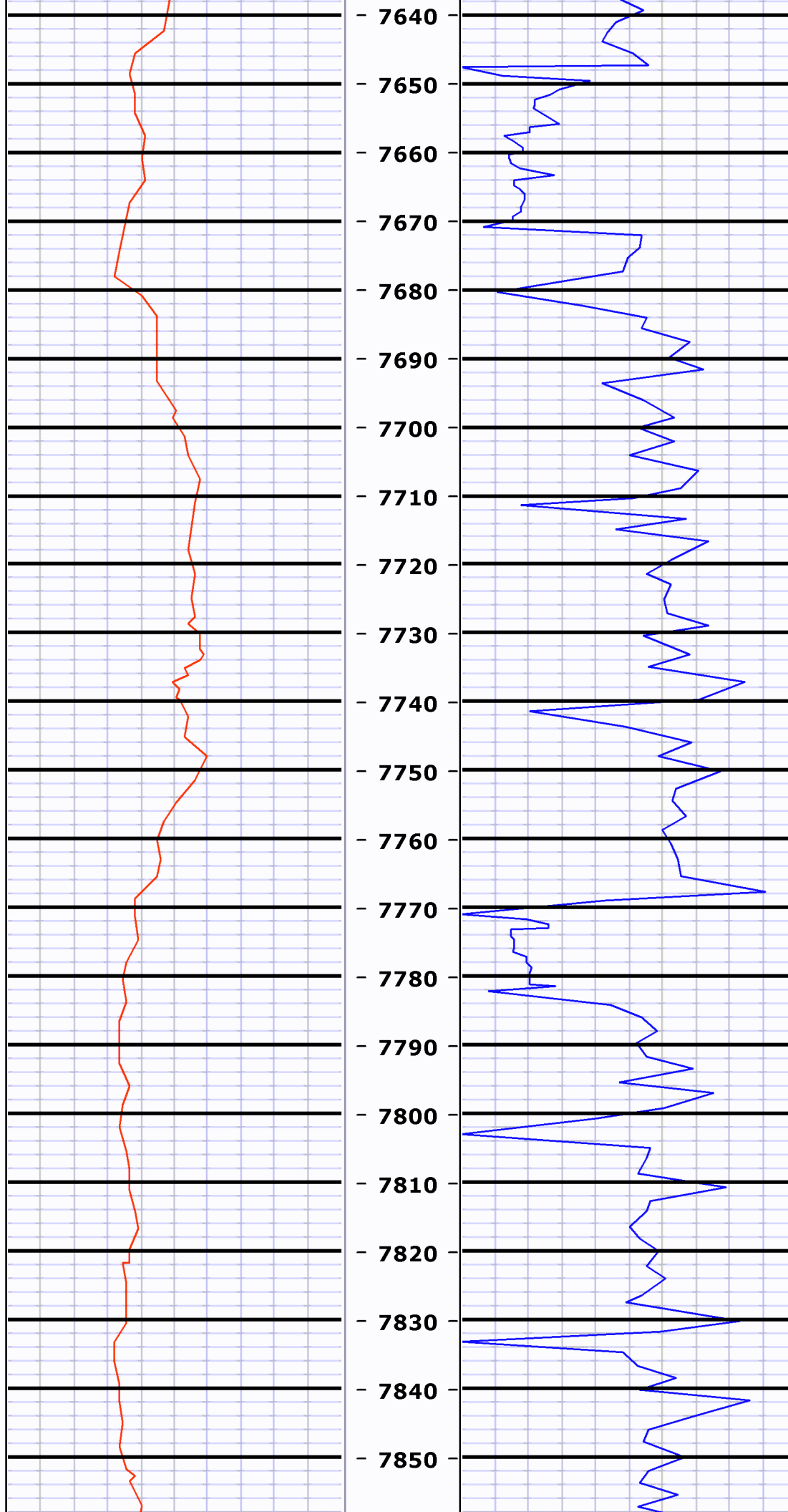


MD=7199.0 INC=91.0
AZM=7.7 TVD=6119.1

MD=7292.0 INC=91.0
AZM=7.7 TVD=6117.5

MD=7384.0 INC=91.3
AZM=7.9 TVD=6115.6

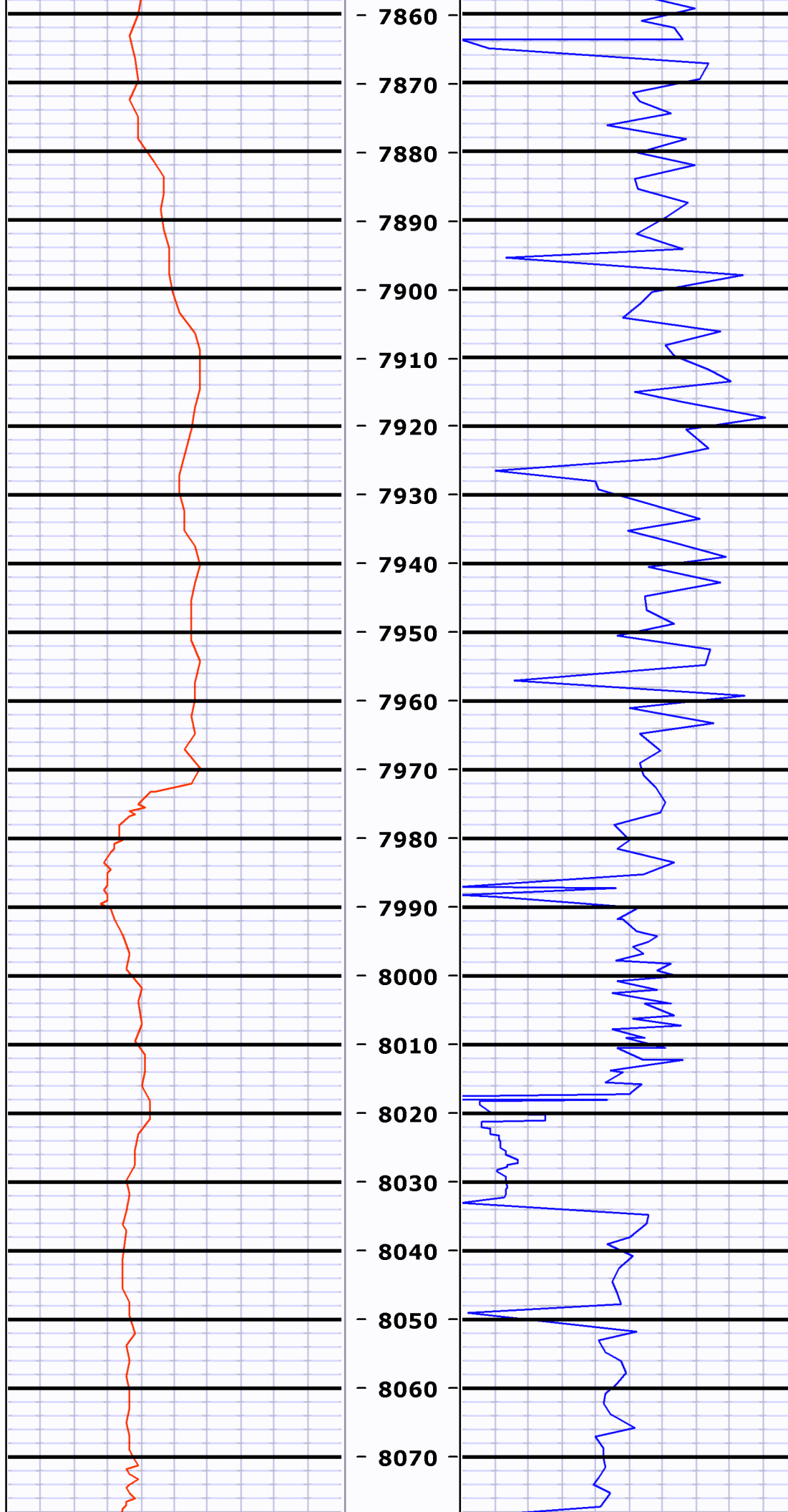




MD=7661.0 INC=89.5
AZM=8.3 TVD=6121.4

MD=7754.0 INC=90.5
AZM=8.5 TVD=6121.4

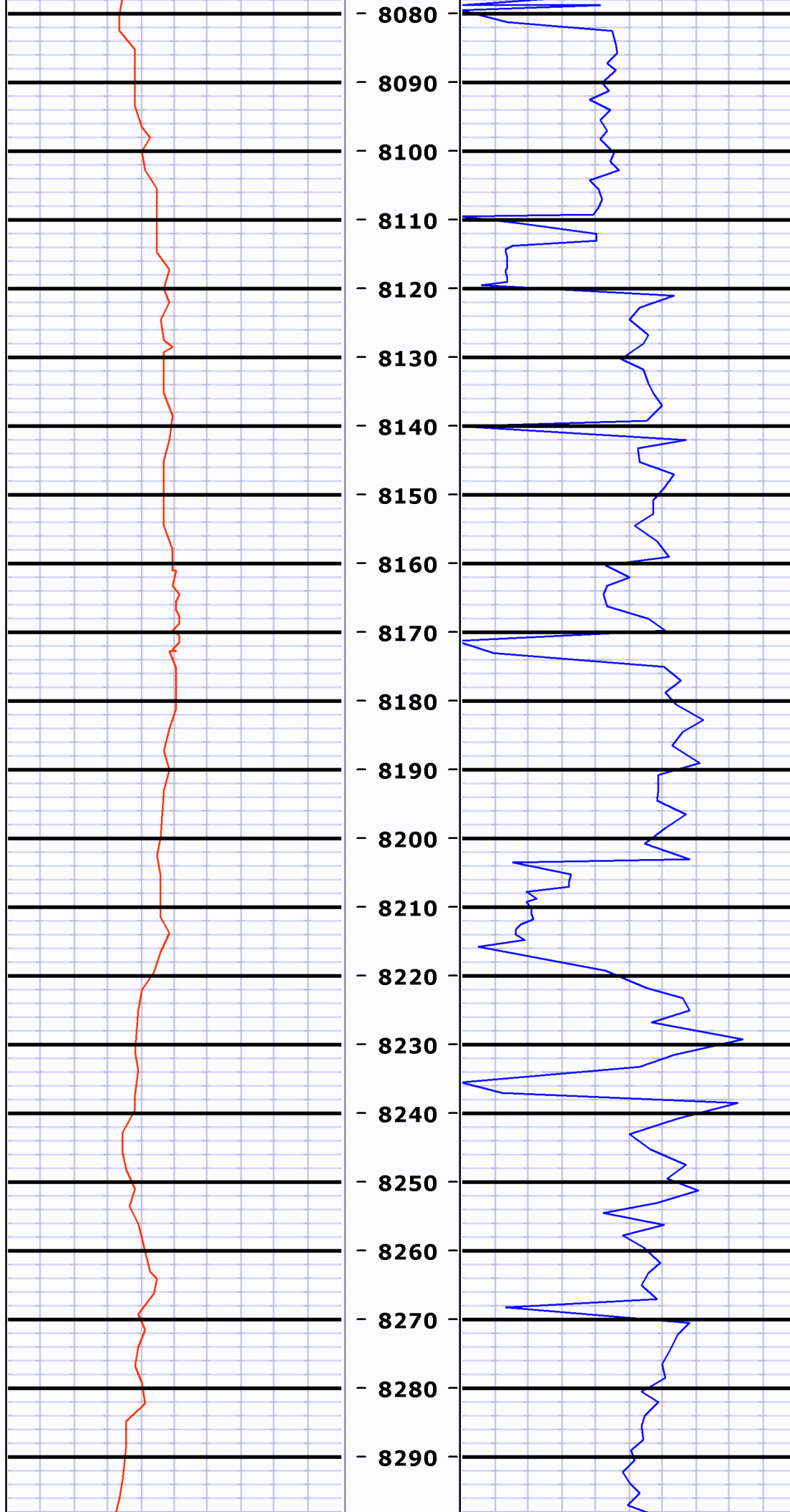
MD=7846.0 INC=91.4
AZM=8.6 TVD=6119.9



MD=7939.0 INC=91.9
AZM=8.0 TVD=6117.2

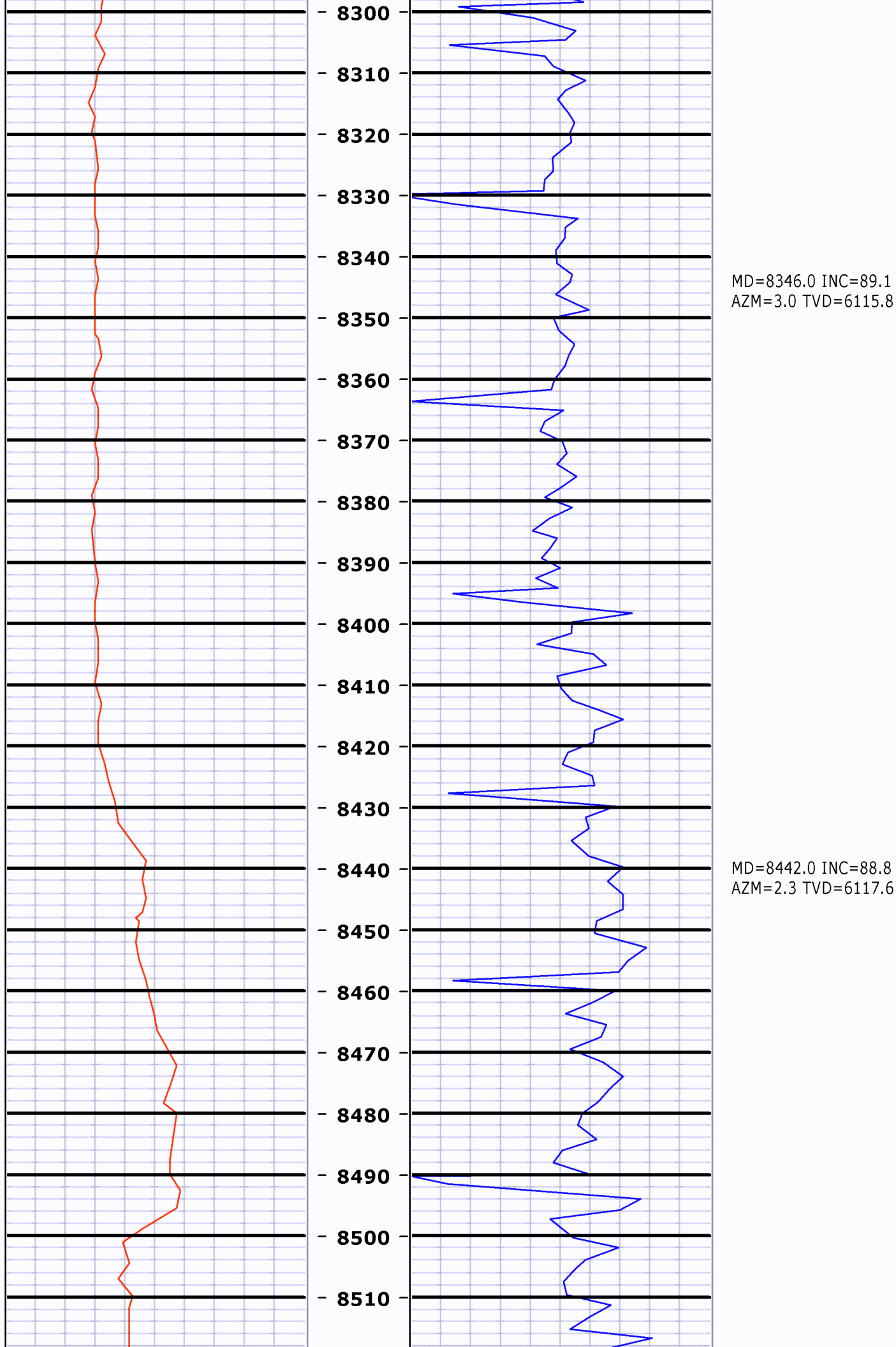
MD=7970.0 INC=91.9
AZM=7.3 TVD=6116.2

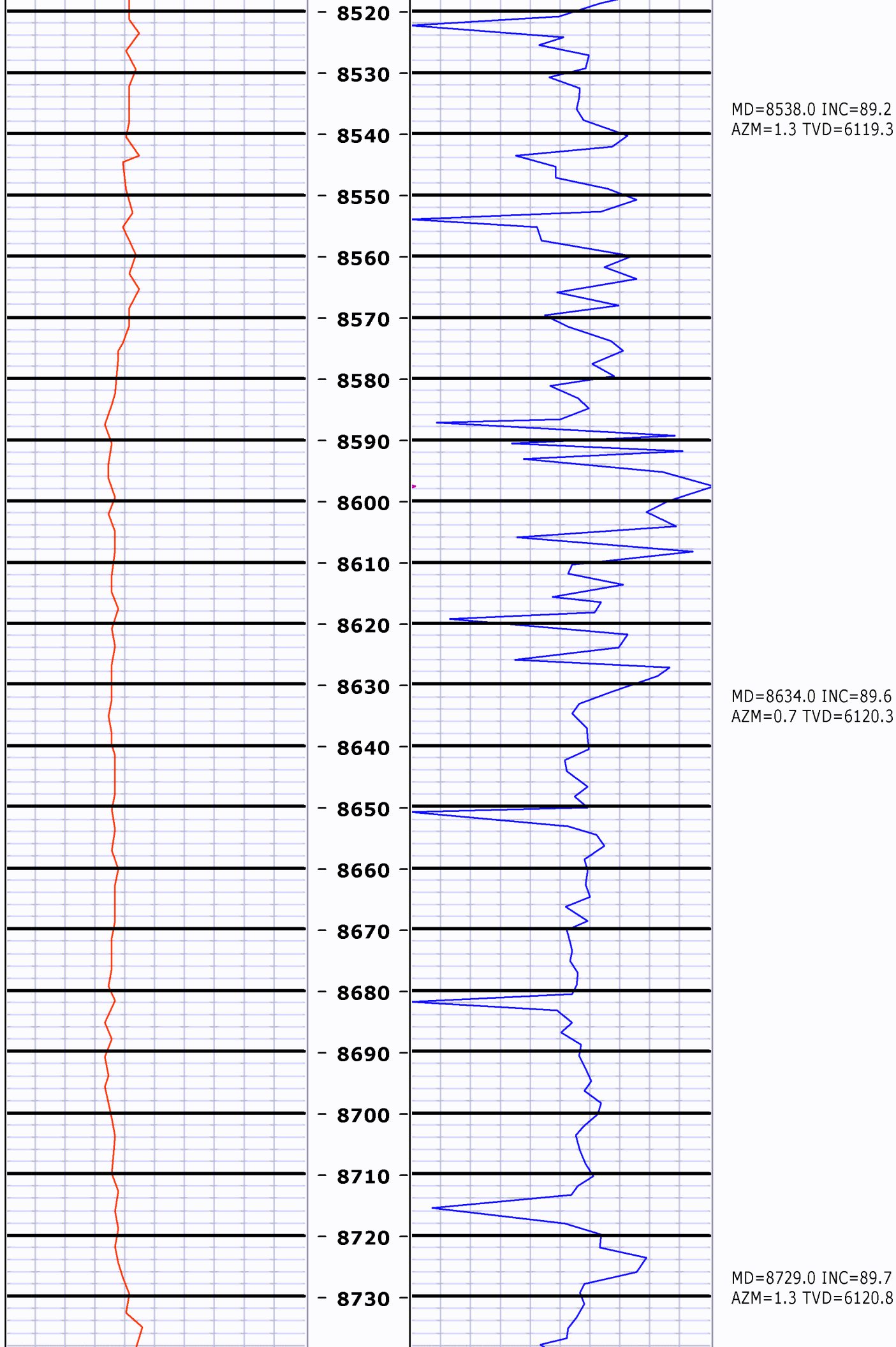
MD=8061.0 INC=90.6
AZM=6.2 TVD=6114.2

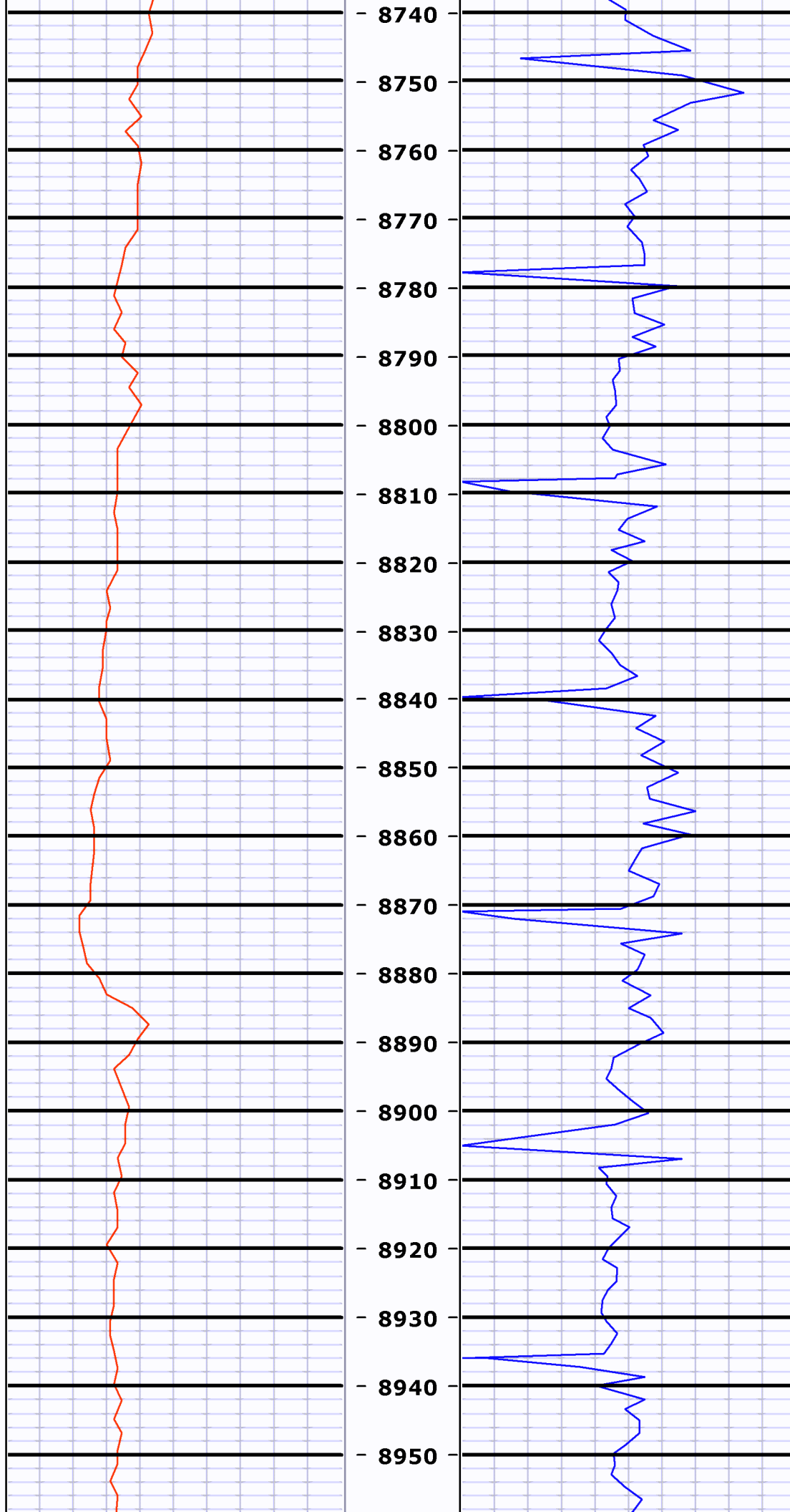


MD=8155.0 INC=90.4
AZM=5.0 TVD=6113.4

MD=8251.0 INC=88.8
AZM=3.5 TVD=6114.1

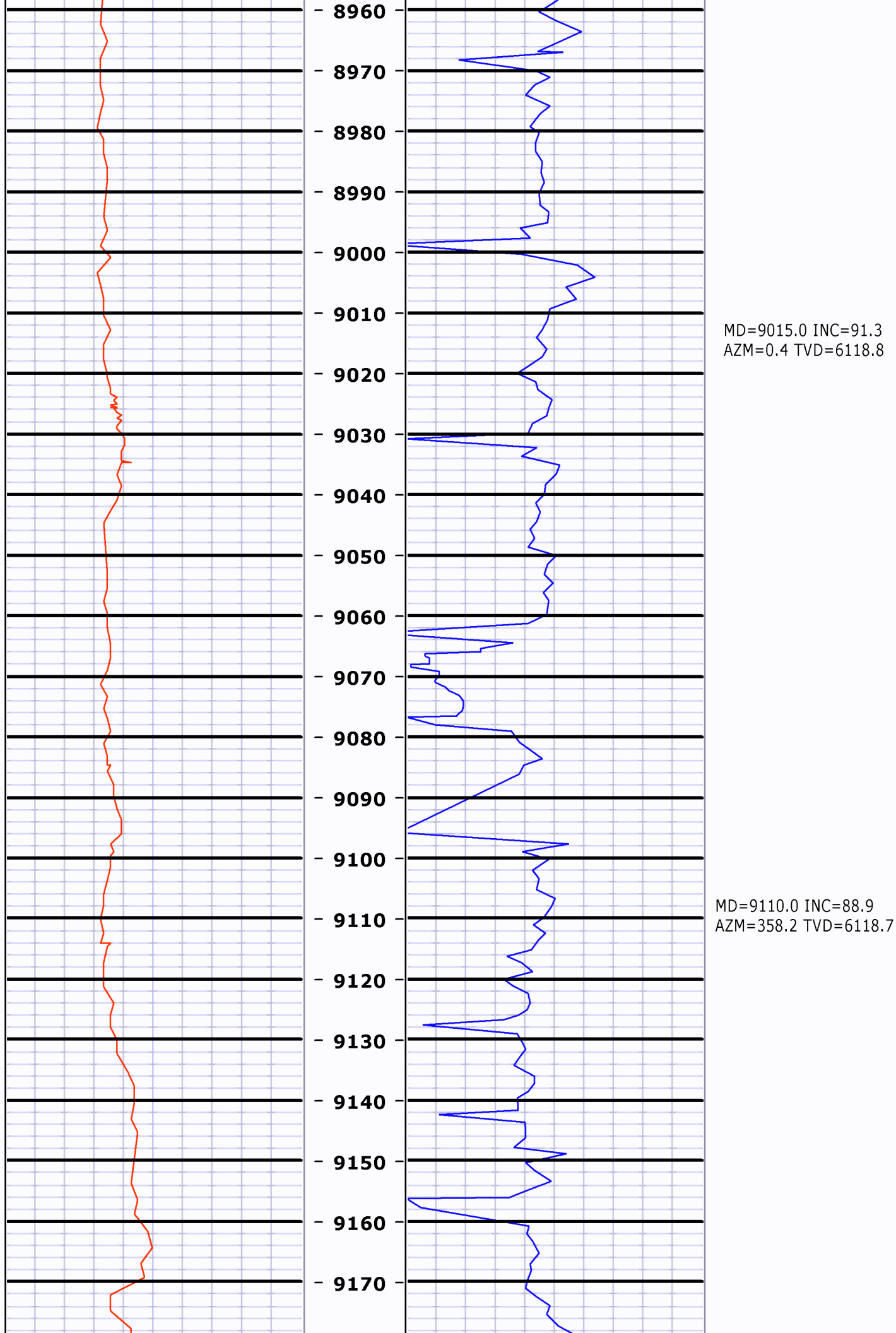


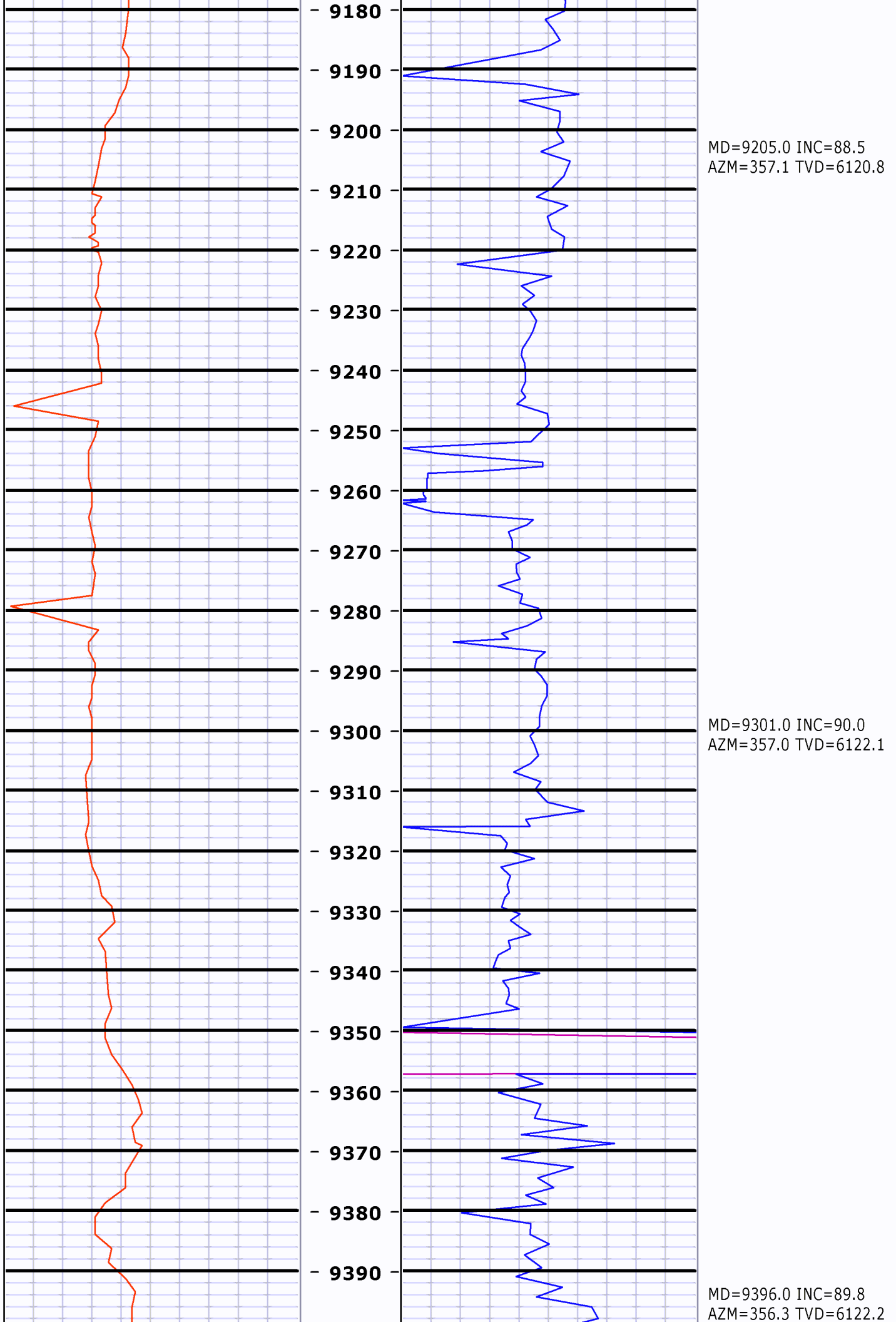


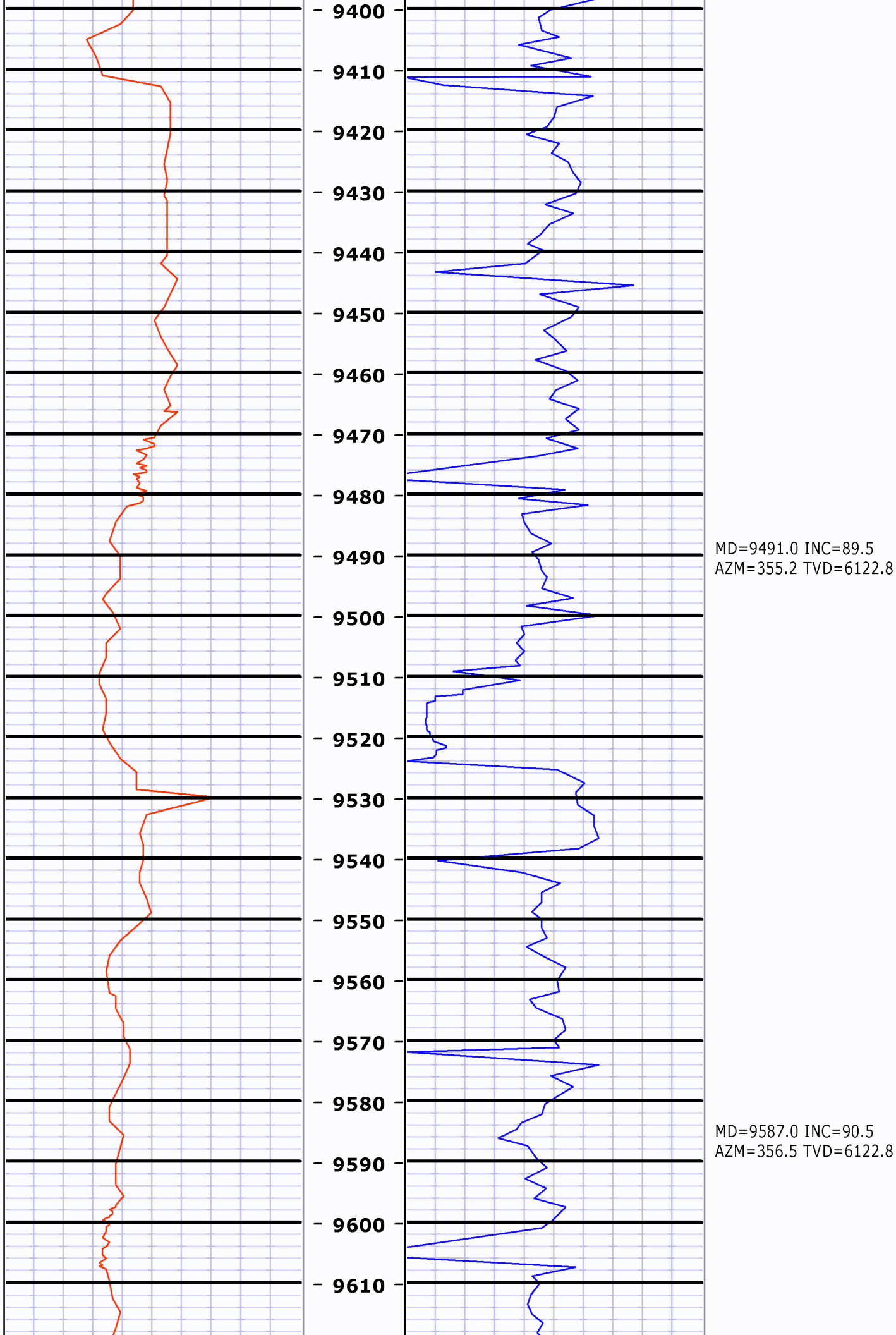


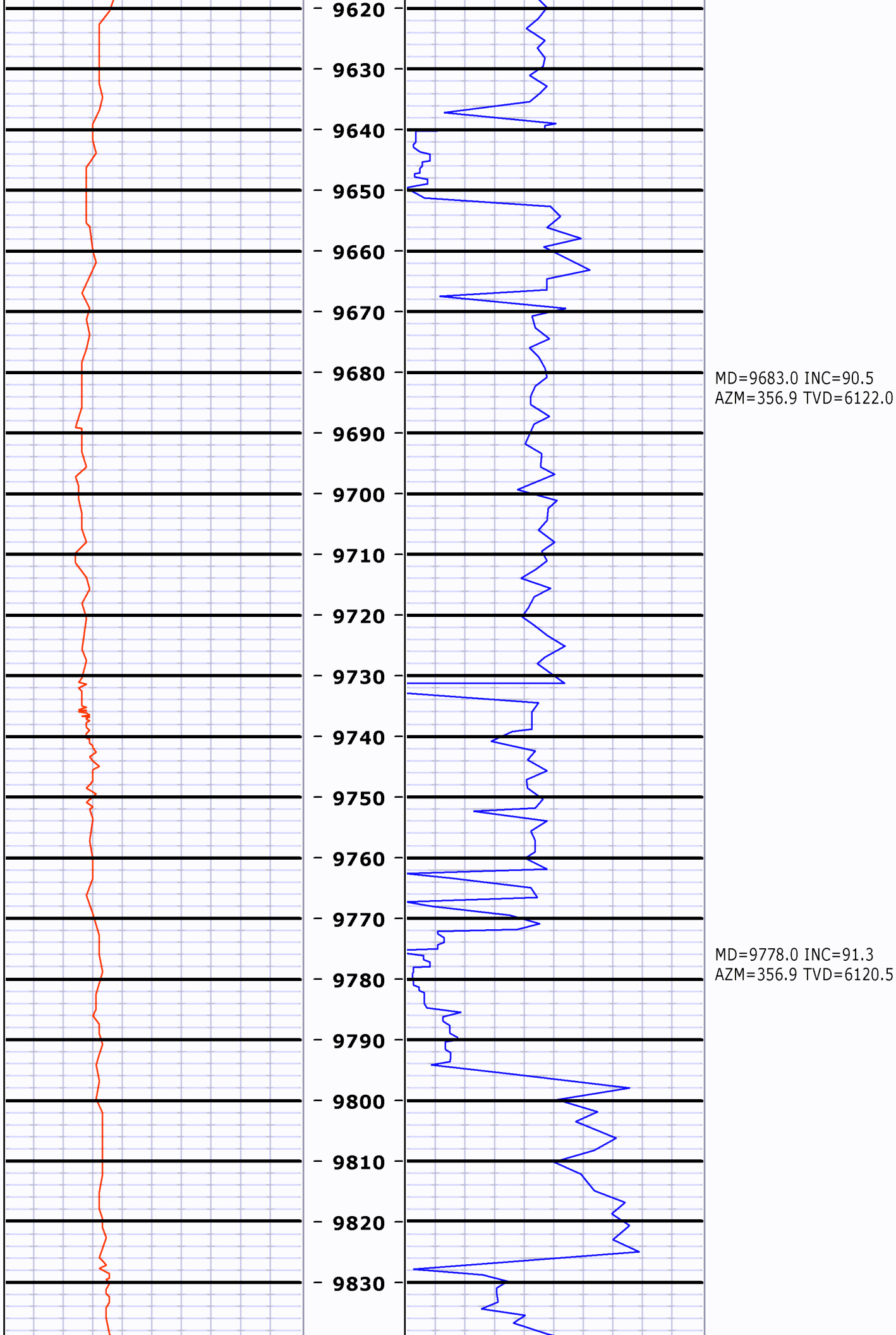
MD=8824.0 INC=90.2
AZM=1.3 TVD=6120.9

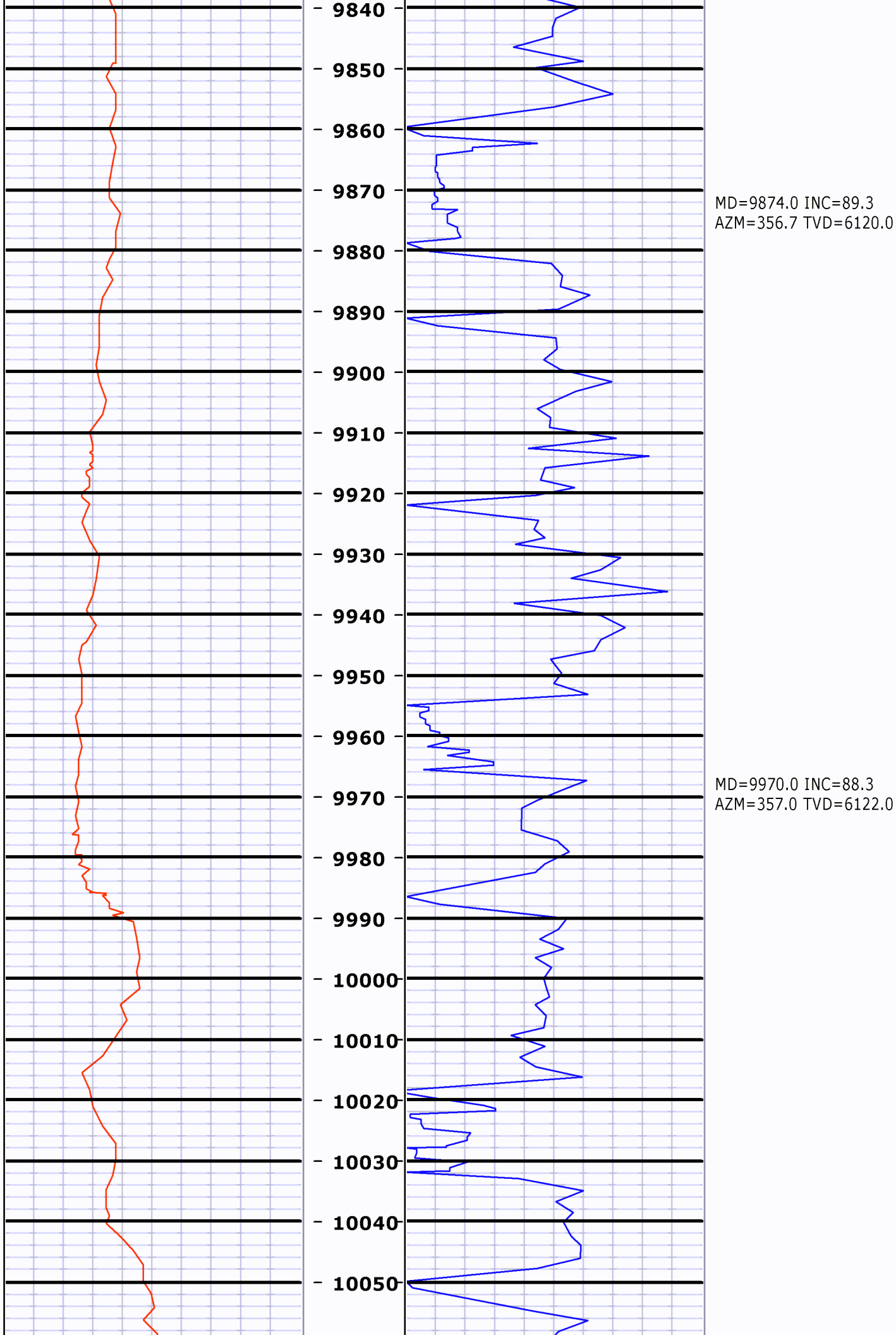
MD=8919.0 INC=90.5
AZM=1.0 TVD=6120.3

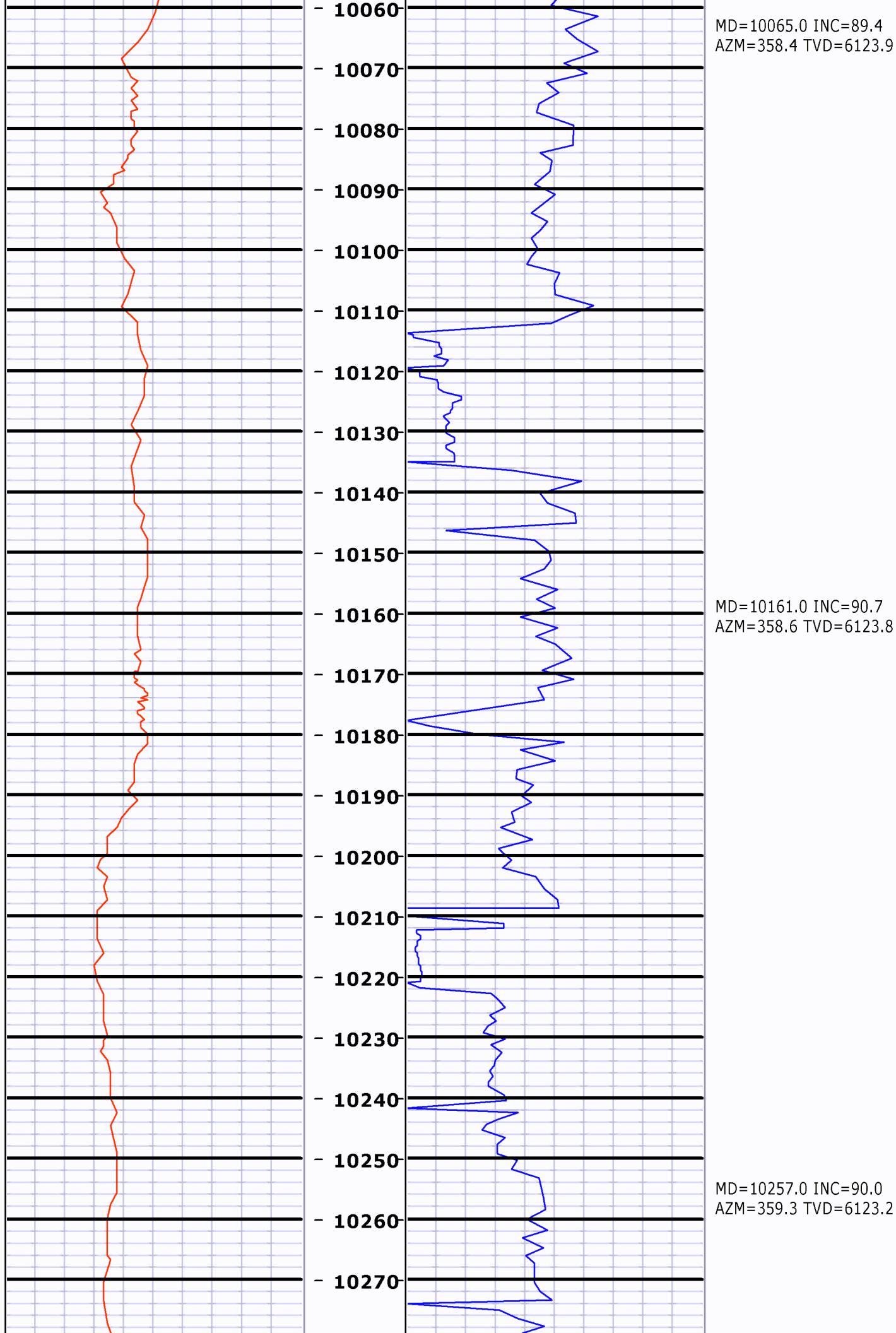


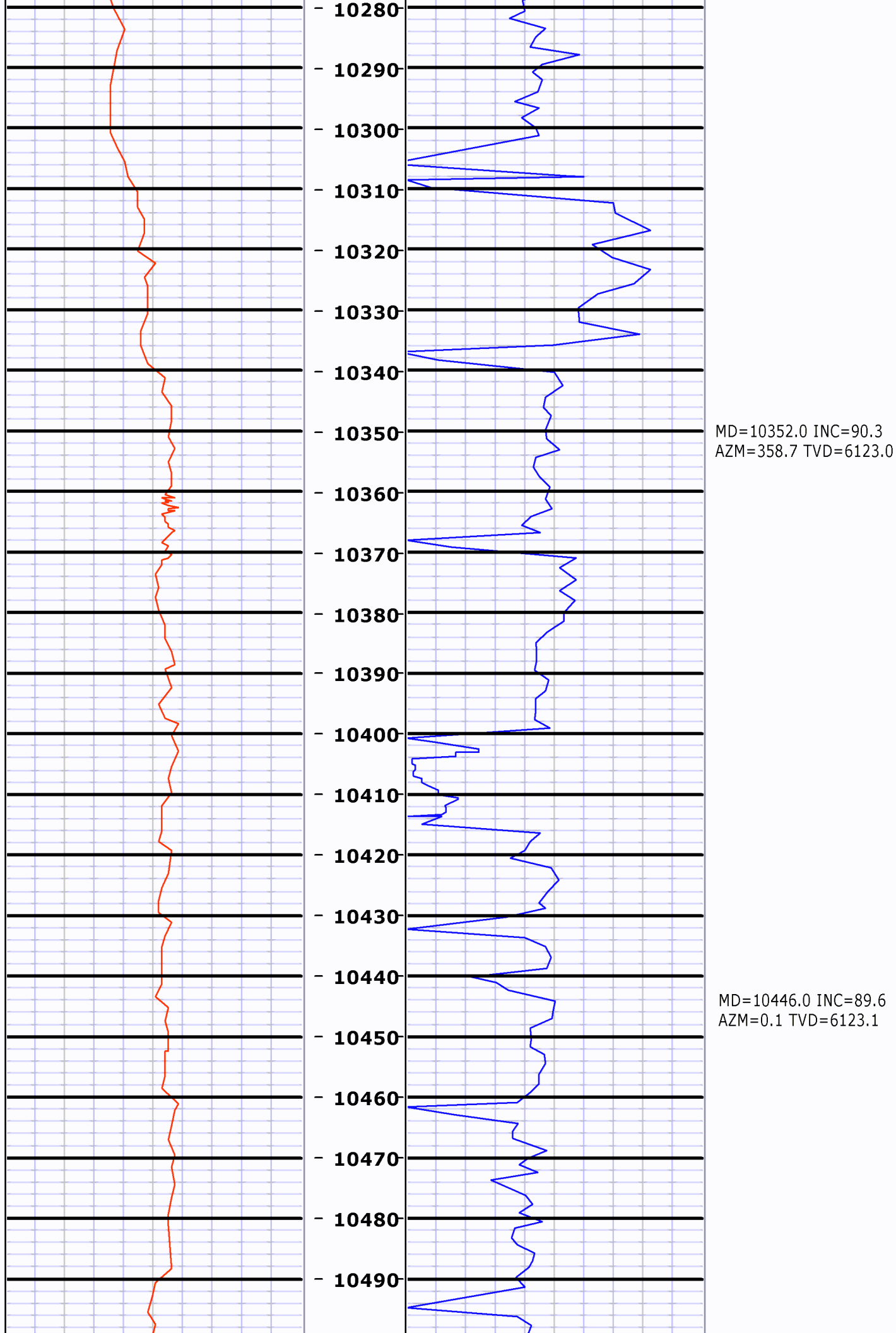


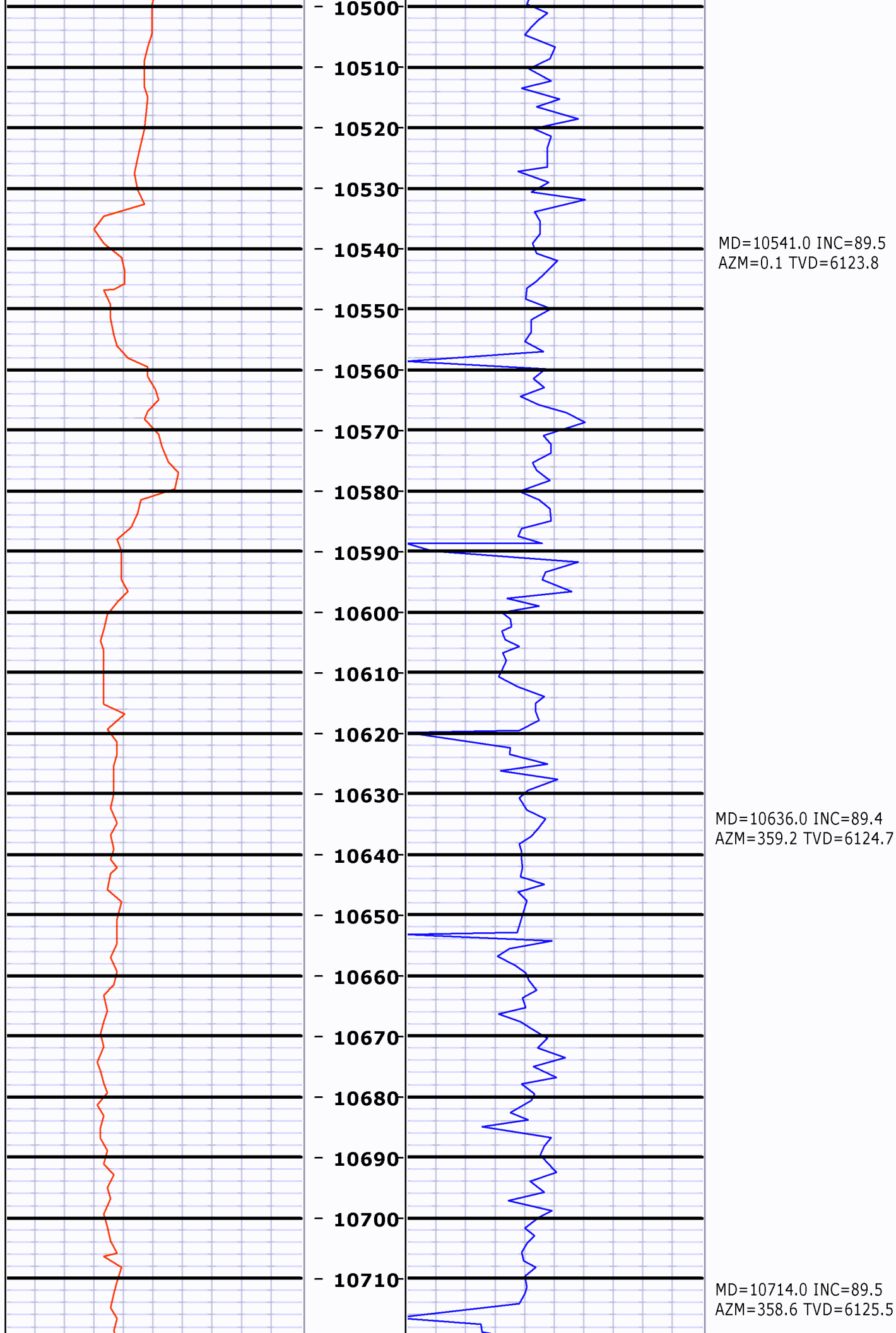


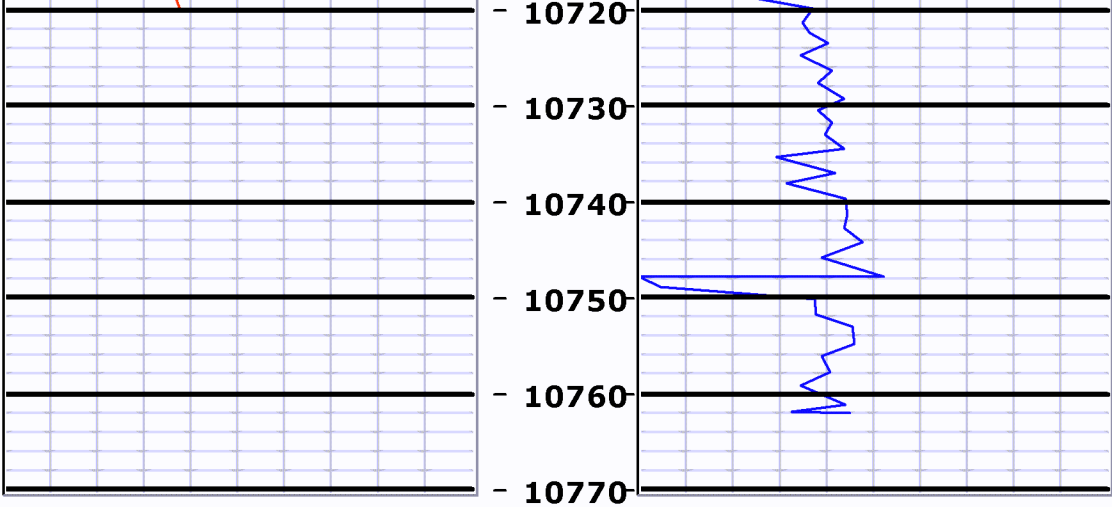












0	Gamma [AAPI]	200
200	Gamma [AAPI]	300

Feet
5":100'
MD

0	ROP [ft per hr]	500
500	ROP [ft per hr]	1000

Mezintel

Client: **Bonanza Creek**

Well Name: **Pronghorn 14-11-4HNB**

API/UWI:

Well Lic:

G DAT:

0

Surface LSD:

KB:

0

State/Prov: **Colorado**

Job #: **2009-364**

GL:

0

Country: **U.S.A.**

MWD Kit:

12

DF:

0