

Bayswater Exploration & Production, LLC

Well Name: **Carlson K-15-16HC**

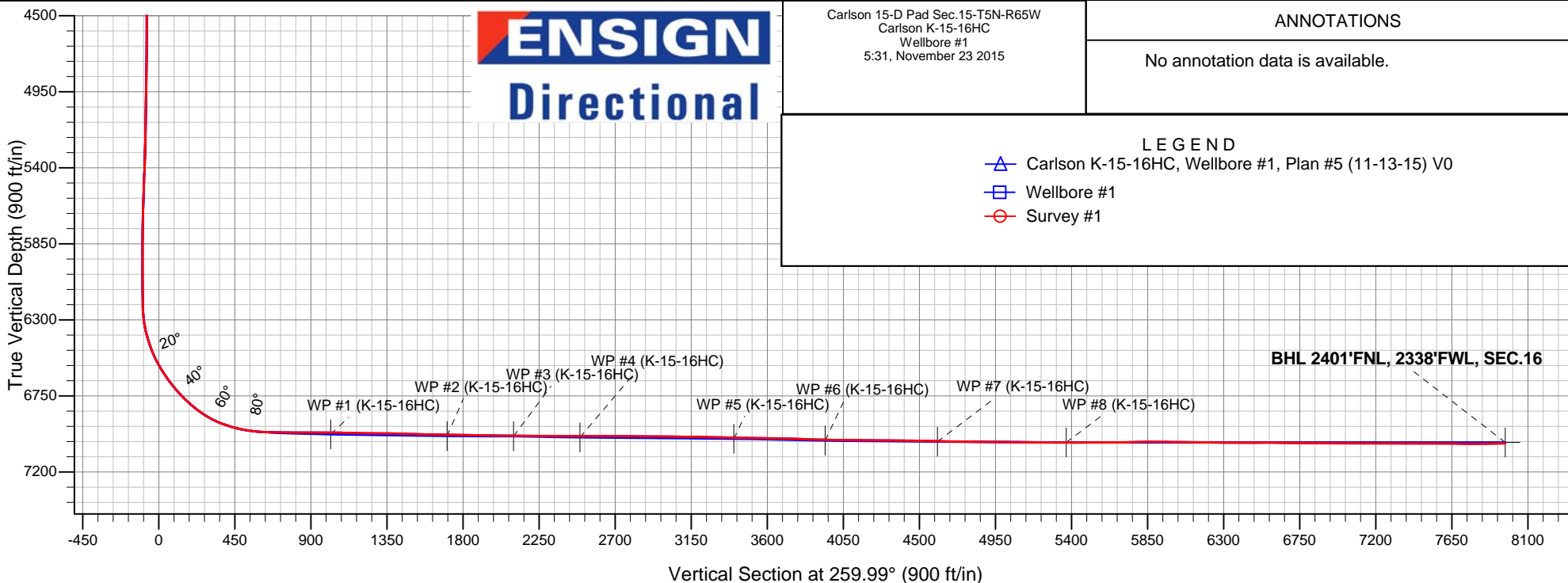
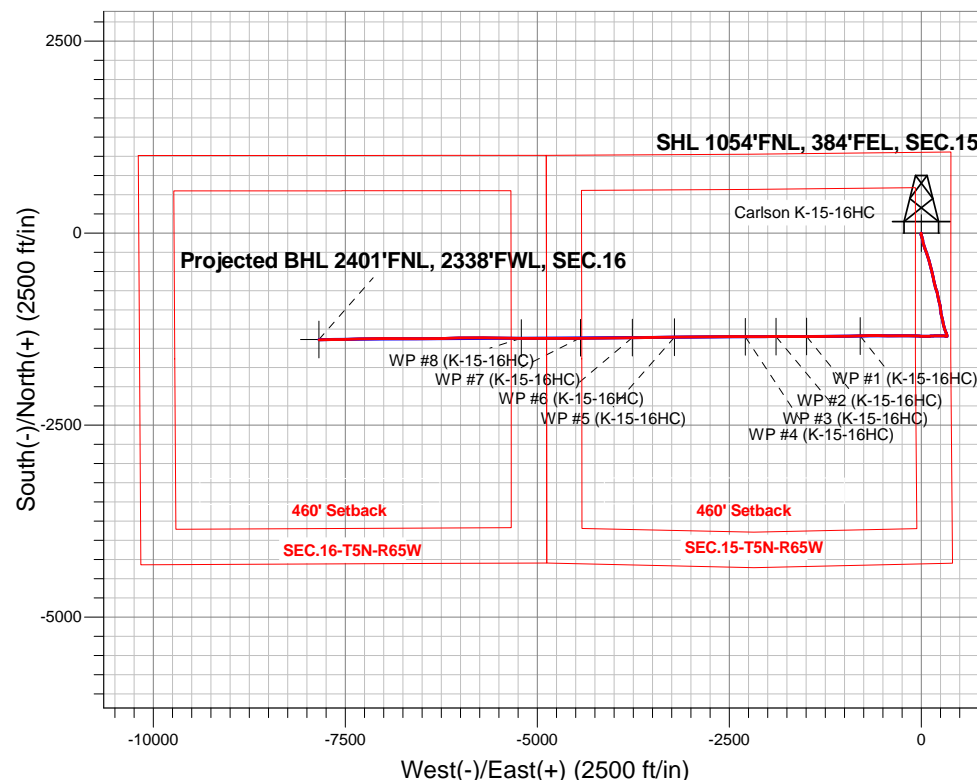
Surface Location: Carlson 15-D Pad Sec.15-T5N-R65W
North American Datum 1983 , US State Plane 1983 , Colorado Northern Zone

Ground Elevation: 4621.0

+N/-S	+E/-W	Northing	Easting	Latitude	Longitude	Slot
0.0	0.0	1391065.30	3239126.97	40.403698	-104.641347	
RKB - 22.5' WELL @ 4643.5ft (RKB - 22.5')						

FINAL SURVEY

Projected Bottom Hole Location
15003'MD 7032'TVD 1390'S & 7844'W of SHL
90.75 degree Incl @ 268.41 degree AZM





Bayswater Exploration & Production, LLC

SEC.15-T5N-R65W

Carlson 15-D Pad Sec.15-T5N-R65W

Carlson K-15-16HC

Wellbore #1

Survey: Survey #1

Standard Survey Report

23 November, 2015



BAYSWATER
EXPLORATION & PRODUCTION, LLC

Company:	Bayswater Exploration & Production, LLC	Local Co-ordinate Reference:	Well Carlson K-15-16HC
Project:	SEC.15-T5N-R65W	TVD Reference:	WELL @ 4643.5ft (RKB - 22.5')
Site:	Carlson 15-D Pad Sec.15-T5N-R65W	MD Reference:	WELL @ 4643.5ft (RKB - 22.5')
Well:	Carlson K-15-16HC	North Reference:	True
Wellbore:	Wellbore #1	Survey Calculation Method:	Minimum Curvature
Design:	Wellbore #1	Database:	EDMNEW

Project	SEC.15-T5N-R65W, Weld County, Colorado		
Map System:	US State Plane 1983	System Datum:	Mean Sea Level
Geo Datum:	North American Datum 1983		Using Well Reference Point
Map Zone:	Colorado Northern Zone		Using geodetic scale factor

Site	Carlson 15-D Pad Sec.15-T5N-R65W				
Site Position:		Northing:	1,391,065.25 ft	Latitude:	40.403695
From:	Lat/Long	Easting:	3,239,231.97 ft	Longitude:	-104.640970
Position Uncertainty:	0.0 ft	Slot Radius:	"	Grid Convergence:	0.56 °

Well	Carlson K-15-16HC					
Well Position	+N/-S	0.0 ft	Northing:	1,391,065.30 ft	Latitude:	40.403698
	+E/-W	0.0 ft	Easting:	3,239,126.97 ft	Longitude:	-104.641347
Position Uncertainty		0.0 ft	Wellhead Elevation:	ft	Ground Level:	4,621.0 ft

Wellbore	Wellbore #1				
Magnetics	Model Name	Sample Date	Declination (°)	Dip Angle (°)	Field Strength (nT)
	IGRF2010	10/11/2015	8.21	66.92	52,692

Design	Wellbore #1				
Audit Notes:					
Version:	1.0	Phase:	ACTUAL	Tie On Depth:	0.0
Vertical Section:	Depth From (TVD) (ft)	+N/-S (ft)	+E/-W (ft)	Direction (°)	
	0.0	0.0	0.0	259.99	

Survey Program	Date	11/23/2015			
From (ft)	To (ft)	Survey (Wellbore)	Tool Name	Description	
252.0	15,003.0	Survey #1 (Wellbore #1)	MWD	MWD - Standard	

Survey										
Measured Depth (ft)	Inclination (°)	Azimuth (°)	Vertical Depth (ft)	+N/-S (ft)	+E/-W (ft)	Vertical Section (ft)	Dogleg Rate (°/100ft)	Build Rate (°/100ft)	Turn Rate (°/100ft)	
0.0	0.00	0.00	0.0	0.0	0.0	0.0	0.00	0.00	0.00	
1.0	0.01	203.90	1.0	0.0	0.0	0.0	0.52	0.52	0.00	
SHL 1054'FNL, 384'FEL, SEC.15										
252.0	1.30	203.90	252.0	-2.6	-1.2	1.6	0.52	0.52	0.00	
344.0	1.40	197.20	344.0	-4.6	-1.9	2.7	0.20	0.11	-7.28	
436.0	1.90	206.50	435.9	-7.1	-2.9	4.1	0.61	0.54	10.11	
528.0	2.80	190.00	527.8	-10.7	-4.0	5.8	1.21	0.98	-17.93	
620.0	4.00	171.90	619.7	-16.0	-3.9	6.7	1.73	1.30	-19.67	
712.0	5.40	163.60	711.4	-23.4	-2.3	6.3	1.69	1.52	-9.02	
805.0	6.30	159.40	803.9	-32.4	0.8	4.9	1.07	0.97	-4.52	
924.0	6.40	160.80	922.2	-44.7	5.2	2.6	0.15	0.08	1.18	
1,019.0	8.30	167.10	1,016.4	-56.4	8.5	1.4	2.17	2.00	6.63	
1,114.0	8.90	164.80	1,110.3	-70.2	12.0	0.4	0.73	0.63	-2.42	

Company:	Bayswater Exploration & Production, LLC	Local Co-ordinate Reference:	Well Carlson K-15-16HC
Project:	SEC.15-T5N-R65W	TVD Reference:	WELL @ 4643.5ft (RKB - 22.5')
Site:	Carlson 15-D Pad Sec.15-T5N-R65W	MD Reference:	WELL @ 4643.5ft (RKB - 22.5')
Well:	Carlson K-15-16HC	North Reference:	True
Wellbore:	Wellbore #1	Survey Calculation Method:	Minimum Curvature
Design:	Wellbore #1	Database:	EDMNEW

Survey

Measured Depth (ft)	Inclination (°)	Azimuth (°)	Vertical Depth (ft)	+N/-S (ft)	+E/-W (ft)	Vertical Section (ft)	Dogleg Rate (°/100ft)	Build Rate (°/100ft)	Turn Rate (°/100ft)
1,206.0	10.60	169.00	1,201.0	-85.4	15.5	-0.4	2.00	1.85	4.57
1,299.0	12.30	171.90	1,292.1	-103.6	18.5	-0.2	1.93	1.83	3.12
1,391.0	13.50	169.40	1,381.8	-123.8	21.8	0.0	1.44	1.30	-2.72
1,483.0	13.60	160.40	1,471.2	-144.6	27.4	-1.9	2.29	0.11	-9.78
1,575.0	13.50	162.00	1,560.7	-165.0	34.4	-5.2	0.42	-0.11	1.74
1,667.0	15.00	160.30	1,649.8	-186.4	41.7	-8.7	1.69	1.63	-1.85
1,759.0	16.90	162.20	1,738.3	-210.3	49.8	-12.5	2.14	2.07	2.07
1,851.0	18.40	162.00	1,826.0	-236.9	58.4	-16.4	1.63	1.63	-0.22
1,943.0	18.20	158.30	1,913.3	-264.0	68.2	-21.3	1.28	-0.22	-4.02
2,035.0	19.60	159.20	2,000.4	-291.8	79.0	-27.1	1.55	1.52	0.98
2,127.0	19.10	162.70	2,087.2	-320.6	89.0	-31.9	1.37	-0.54	3.80
2,219.0	19.10	166.40	2,174.1	-349.6	97.0	-34.7	1.32	0.00	4.02
2,312.0	18.30	161.70	2,262.2	-378.3	105.1	-37.8	1.83	-0.86	-5.05
2,404.0	18.00	164.10	2,349.6	-405.7	113.6	-41.3	0.88	-0.33	2.61
2,496.0	18.50	169.20	2,437.0	-433.7	120.2	-43.0	1.82	0.54	5.54
2,591.0	18.10	167.30	2,527.2	-462.9	126.3	-43.9	0.76	-0.42	-2.00
2,686.0	17.90	166.90	2,617.5	-491.5	132.8	-45.4	0.25	-0.21	-0.42
2,781.0	18.40	166.90	2,707.8	-520.3	139.5	-47.0	0.53	0.53	0.00
2,876.0	18.60	166.90	2,797.9	-549.7	146.4	-48.6	0.21	0.21	0.00
2,972.0	17.90	165.50	2,889.1	-578.9	153.5	-50.6	0.86	-0.73	-1.46
3,067.0	16.60	169.20	2,979.8	-606.3	159.7	-51.9	1.79	-1.37	3.89
3,162.0	15.40	167.50	3,071.1	-632.0	165.0	-52.7	1.36	-1.26	-1.79
3,257.0	15.90	166.10	3,162.6	-656.9	170.8	-54.1	0.66	0.53	-1.47
3,352.0	16.80	167.50	3,253.8	-683.0	176.9	-55.6	1.03	0.95	1.47
3,447.0	14.80	162.50	3,345.2	-707.9	183.6	-57.8	2.54	-2.11	-5.26
3,543.0	15.00	160.40	3,437.9	-731.3	191.4	-61.4	0.60	0.21	-2.19
3,638.0	15.40	162.70	3,529.6	-755.0	199.3	-65.1	0.76	0.42	2.42
3,733.0	16.80	164.10	3,620.9	-780.2	206.8	-68.1	1.53	1.47	1.47
3,828.0	17.30	169.90	3,711.7	-807.3	213.0	-69.5	1.87	0.53	6.11
3,923.0	17.70	168.20	3,802.3	-835.4	218.5	-70.0	0.68	0.42	-1.79
4,018.0	17.80	166.90	3,892.8	-863.6	224.7	-71.2	0.43	0.11	-1.37
4,114.0	17.10	168.90	3,984.4	-891.8	230.8	-72.3	0.96	-0.73	2.08
4,209.0	15.20	166.10	4,075.6	-917.6	236.4	-73.4	2.16	-2.00	-2.95
4,304.0	15.30	166.80	4,167.3	-941.9	242.3	-74.9	0.22	0.11	0.74
4,399.0	14.20	174.00	4,259.2	-965.7	246.4	-74.8	2.25	-1.16	7.58
4,494.0	15.10	175.00	4,351.1	-989.6	248.7	-72.9	0.98	0.95	1.05
4,589.0	15.70	172.70	4,442.7	-1,014.7	251.4	-71.3	0.90	0.63	-2.42
4,685.0	17.00	169.60	4,534.8	-1,041.4	255.6	-70.7	1.63	1.35	-3.23
4,780.0	14.60	168.70	4,626.2	-1,066.8	260.4	-71.1	2.54	-2.53	-0.95
4,875.0	15.30	165.70	4,718.0	-1,090.6	265.9	-72.3	1.10	0.74	-3.16
4,970.0	15.70	169.40	4,809.5	-1,115.4	271.3	-73.4	1.12	0.42	3.89
5,065.0	16.30	168.30	4,900.8	-1,141.1	276.4	-73.9	0.71	0.63	-1.16
5,161.0	14.50	166.10	4,993.4	-1,166.0	282.0	-75.1	1.97	-1.88	-2.29
5,256.0	14.40	165.70	5,085.4	-1,189.0	287.8	-76.8	0.15	-0.11	-0.42
5,351.0	14.10	165.70	5,177.5	-1,211.6	293.6	-78.6	0.32	-0.32	0.00
5,446.0	13.50	164.70	5,269.7	-1,233.5	299.3	-80.5	0.68	-0.63	-1.05
5,541.0	12.90	162.00	5,362.2	-1,254.3	305.6	-82.9	0.91	-0.63	-2.84
5,636.0	11.00	158.30	5,455.1	-1,272.8	312.2	-86.3	2.16	-2.00	-3.89
5,731.0	10.50	160.40	5,548.5	-1,289.4	318.4	-89.5	0.67	-0.53	2.21
5,826.0	9.00	157.30	5,642.1	-1,304.4	324.2	-92.6	1.67	-1.58	-3.26
5,921.0	6.90	164.50	5,736.2	-1,316.8	328.6	-94.8	2.44	-2.21	7.58
6,016.0	5.60	161.10	5,830.6	-1,326.7	331.6	-96.1	1.42	-1.37	-3.58
6,112.0	4.20	174.10	5,926.3	-1,334.6	333.5	-96.5	1.85	-1.46	13.54
6,207.0	1.80	173.40	6,021.1	-1,339.5	334.0	-96.2	2.53	-2.53	-0.74

Company:	Bayswater Exploration & Production, LLC	Local Co-ordinate Reference:	Well Carlson K-15-16HC
Project:	SEC.15-T5N-R65W	TVD Reference:	WELL @ 4643.5ft (RKB - 22.5')
Site:	Carlson 15-D Pad Sec.15-T5N-R65W	MD Reference:	WELL @ 4643.5ft (RKB - 22.5')
Well:	Carlson K-15-16HC	North Reference:	True
Wellbore:	Wellbore #1	Survey Calculation Method:	Minimum Curvature
Design:	Wellbore #1	Database:	EDMNEW

Survey

Measured Depth (ft)	Inclination (°)	Azimuth (°)	Vertical Depth (ft)	+N/-S (ft)	+E/-W (ft)	Vertical Section (ft)	Dogleg Rate (°/100ft)	Build Rate (°/100ft)	Turn Rate (°/100ft)
6,302.0	1.00	215.30	6,116.1	-1,341.7	333.7	-95.5	1.31	-0.84	44.11
6,397.0	0.70	200.00	6,211.1	-1,342.9	333.1	-94.6	0.39	-0.32	-16.11
6,493.0	8.50	281.50	6,306.7	-1,342.0	325.9	-87.7	8.78	8.13	84.90
6,587.0	16.10	275.70	6,398.5	-1,339.4	306.1	-68.7	8.18	8.09	-6.17
6,683.0	22.50	271.70	6,489.1	-1,337.5	274.4	-37.9	6.80	6.67	-4.17
6,778.0	30.00	270.80	6,574.2	-1,336.6	232.5	3.3	7.91	7.89	-0.95
6,873.0	37.00	267.70	6,653.4	-1,337.4	180.1	55.1	7.58	7.37	-3.26
6,968.0	41.10	266.40	6,727.2	-1,340.5	120.3	114.4	4.40	4.32	-1.37
7,063.0	48.80	270.30	6,794.4	-1,342.3	53.3	180.7	8.61	8.11	4.11
7,158.0	56.10	272.20	6,852.2	-1,340.6	-21.9	254.5	7.85	7.68	2.00
7,253.0	65.50	271.40	6,898.5	-1,338.0	-104.7	335.6	9.92	9.89	-0.84
7,301.0	70.10	271.70	6,916.6	-1,336.8	-149.1	379.2	9.60	9.58	0.63
7,348.0	73.20	270.80	6,931.4	-1,335.9	-193.7	422.9	6.84	6.60	-1.91
7,396.0	76.90	269.80	6,943.8	-1,335.6	-240.1	468.5	7.97	7.71	-2.08
7,443.0	80.50	269.10	6,953.0	-1,336.1	-286.2	514.0	7.80	7.66	-1.49
7,476.0	82.70	268.90	6,957.9	-1,336.6	-318.8	546.2	6.69	6.67	-0.61
7,562.0	88.37	271.45	6,964.5	-1,336.4	-404.5	630.6	7.22	6.59	2.97
7,594.0	88.55	271.73	6,965.4	-1,335.5	-436.5	661.9	1.04	0.56	0.88
7,689.0	89.60	271.42	6,966.9	-1,332.9	-531.4	755.0	1.15	1.11	-0.33
7,785.0	89.96	270.10	6,967.3	-1,331.6	-627.4	849.3	1.43	0.38	-1.38
7,880.0	90.22	267.44	6,967.2	-1,333.6	-722.4	943.1	2.81	0.27	-2.80
7,954.5	89.19	267.65	6,967.5	-1,336.8	-796.8	1,017.0	1.42	-1.39	0.28
WP #1 (K-15-16HC)									
7,975.0	88.90	267.71	6,967.9	-1,337.7	-817.3	1,037.3	1.42	-1.39	0.28
8,070.0	88.55	268.31	6,970.0	-1,341.0	-912.2	1,131.4	0.73	-0.37	0.63
8,166.0	89.69	269.58	6,971.5	-1,342.7	-1,008.2	1,226.2	1.78	1.19	1.32
8,261.0	89.25	270.44	6,972.4	-1,342.7	-1,103.2	1,319.7	1.02	-0.46	0.91
8,356.0	88.20	269.70	6,974.5	-1,342.6	-1,198.2	1,413.2	1.35	-1.11	-0.78
8,451.0	88.72	269.40	6,977.0	-1,343.3	-1,293.1	1,506.9	0.63	0.55	-0.32
8,546.0	88.72	268.84	6,979.1	-1,344.8	-1,388.1	1,600.7	0.59	0.00	-0.59
8,638.0	89.69	269.14	6,980.4	-1,346.4	-1,480.1	1,691.5	1.10	1.05	0.33
8,652.6	89.59	269.32	6,980.5	-1,346.6	-1,494.7	1,705.9	1.43	-0.67	1.26
WP #2 (K-15-16HC)									
8,729.0	89.08	270.29	6,981.4	-1,346.9	-1,571.1	1,781.2	1.43	-0.67	1.26
8,821.0	88.90	270.70	6,983.0	-1,346.1	-1,663.0	1,871.6	0.49	-0.20	0.45
8,913.0	88.64	271.31	6,985.0	-1,344.5	-1,755.0	1,961.9	0.72	-0.28	0.66
9,005.0	89.25	269.89	6,986.7	-1,343.5	-1,847.0	2,052.3	1.68	0.66	-1.54
9,051.6	89.25	269.27	6,987.3	-1,343.8	-1,893.6	2,098.3	1.33	0.00	-1.33
WP #3 (K-15-16HC)									
9,096.0	89.25	268.68	6,987.9	-1,344.6	-1,938.0	2,142.1	1.33	0.00	-1.33
9,188.0	90.13	269.01	6,988.4	-1,346.5	-2,029.9	2,233.0	1.02	0.96	0.36
9,280.0	89.78	269.99	6,988.4	-1,347.3	-2,121.9	2,323.8	1.13	-0.38	1.07
9,372.0	89.60	269.49	6,988.9	-1,347.7	-2,213.9	2,414.4	0.58	-0.20	-0.54
9,450.6	89.91	268.58	6,989.3	-1,349.0	-2,292.5	2,492.1	1.22	0.39	-1.15
WP #4 (K-15-16HC)									
9,464.0	89.96	268.43	6,989.3	-1,349.4	-2,305.9	2,505.3	1.22	0.39	-1.15
9,555.0	89.96	270.35	6,989.4	-1,350.3	-2,396.9	2,595.1	2.11	0.00	2.11
9,647.0	90.57	270.99	6,988.9	-1,349.3	-2,488.9	2,685.5	0.96	0.66	0.70
9,739.0	89.78	270.52	6,988.7	-1,348.1	-2,580.9	2,775.9	1.00	-0.86	-0.51
9,831.0	89.78	269.26	6,989.0	-1,348.2	-2,672.9	2,866.5	1.37	0.00	-1.37
9,923.0	88.11	268.95	6,990.7	-1,349.7	-2,764.9	2,957.3	1.85	-1.82	-0.34
10,015.0	89.43	270.03	6,992.7	-1,350.5	-2,856.8	3,048.0	1.85	1.43	1.17
10,106.0	89.69	270.25	6,993.4	-1,350.3	-2,947.8	3,137.6	0.37	0.29	0.24
10,198.0	89.16	269.79	6,994.3	-1,350.2	-3,039.8	3,228.2	0.76	-0.58	-0.50

Company:	Bayswater Exploration & Production, LLC	Local Co-ordinate Reference:	Well Carlson K-15-16HC
Project:	SEC.15-T5N-R65W	TVD Reference:	WELL @ 4643.5ft (RKB - 22.5')
Site:	Carlson 15-D Pad Sec.15-T5N-R65W	MD Reference:	WELL @ 4643.5ft (RKB - 22.5')
Well:	Carlson K-15-16HC	North Reference:	True
Wellbore:	Wellbore #1	Survey Calculation Method:	Minimum Curvature
Design:	Wellbore #1	Database:	EDMNEW

Survey

Measured Depth (ft)	Inclination (°)	Azimuth (°)	Vertical Depth (ft)	+N/-S (ft)	+E/-W (ft)	Vertical Section (ft)	Dogleg Rate (°/100ft)	Build Rate (°/100ft)	Turn Rate (°/100ft)
10,290.0	88.90	269.32	6,995.9	-1,350.9	-3,131.8	3,318.9	0.58	-0.28	-0.51
10,373.9	88.58	268.60	6,997.7	-1,352.5	-3,215.7	3,401.8	0.94	-0.38	-0.86
WP #5 (K-15-16HC)									
10,382.0	88.55	268.53	6,997.9	-1,352.7	-3,223.8	3,409.8	0.94	-0.38	-0.86
10,474.0	88.99	267.92	6,999.9	-1,355.5	-3,315.7	3,500.8	0.82	0.48	-0.66
10,566.0	89.43	268.82	7,001.1	-1,358.1	-3,407.7	3,591.8	1.09	0.48	0.98
10,657.0	88.90	269.30	7,002.5	-1,359.6	-3,498.6	3,681.7	0.79	-0.58	0.53
10,749.0	87.93	269.99	7,005.0	-1,360.2	-3,590.6	3,772.3	1.29	-1.05	0.75
10,840.0	88.20	269.71	7,008.1	-1,360.4	-3,681.5	3,861.9	0.43	0.30	-0.31
10,922.0	88.35	269.34	7,010.6	-1,361.1	-3,763.5	3,942.8	0.48	0.18	-0.45
WP #6 (K-15-16HC)									
10,932.0	88.37	269.30	7,010.8	-1,361.2	-3,773.5	3,952.6	0.48	0.18	-0.45
11,024.0	89.69	269.26	7,012.4	-1,362.4	-3,865.5	4,043.4	1.44	1.43	-0.04
11,115.0	89.08	269.52	7,013.4	-1,363.4	-3,956.5	4,133.2	0.73	-0.67	0.29
11,207.0	89.43	269.47	7,014.6	-1,364.2	-4,048.4	4,223.9	0.38	0.38	-0.05
11,298.0	90.13	268.62	7,014.9	-1,365.7	-4,139.4	4,313.8	1.21	0.77	-0.93
11,394.0	89.87	268.55	7,014.9	-1,368.1	-4,235.4	4,408.7	0.28	-0.27	-0.07
11,489.0	88.81	269.79	7,016.0	-1,369.4	-4,330.4	4,502.5	1.72	-1.12	1.31
11,584.0	88.29	270.22	7,018.4	-1,369.4	-4,425.4	4,596.0	0.71	-0.55	0.45
11,596.1	88.36	270.06	7,018.8	-1,369.4	-4,437.4	4,607.9	1.46	0.54	-1.35
WP #7 (K-15-16HC)									
11,680.0	88.81	268.92	7,020.9	-1,370.1	-4,521.3	4,690.6	1.46	0.54	-1.35
11,775.0	89.52	269.27	7,022.2	-1,371.6	-4,616.3	4,784.4	0.83	0.75	0.37
11,870.0	89.34	270.72	7,023.2	-1,371.7	-4,711.3	4,878.0	1.54	-0.19	1.53
11,966.0	89.78	270.95	7,023.9	-1,370.3	-4,807.3	4,972.2	0.52	0.46	0.24
12,061.0	89.69	268.92	7,024.4	-1,370.4	-4,902.3	5,065.8	2.14	-0.09	-2.14
12,157.0	89.16	269.09	7,025.3	-1,372.0	-4,998.2	5,160.6	0.58	-0.55	0.18
12,252.0	89.34	270.69	7,026.6	-1,372.2	-5,093.2	5,254.2	1.69	0.19	1.68
12,347.0	90.04	271.48	7,027.1	-1,370.4	-5,188.2	5,347.4	1.11	0.74	0.83
12,369.2	90.23	271.40	7,027.0	-1,369.9	-5,210.5	5,369.2	0.90	0.83	-0.34
WP #8 (K-15-16HC)									
12,443.0	90.84	271.15	7,026.3	-1,368.2	-5,284.2	5,441.5	0.90	0.83	-0.34
12,538.0	89.78	270.98	7,025.8	-1,366.4	-5,379.2	5,534.8	1.13	-1.12	-0.18
12,633.0	90.13	271.46	7,025.9	-1,364.4	-5,474.1	5,628.0	0.63	0.37	0.51
12,728.0	91.10	271.24	7,024.9	-1,362.2	-5,569.1	5,721.1	1.05	1.02	-0.23
12,824.0	90.92	269.77	7,023.2	-1,361.3	-5,665.1	5,815.5	1.54	-0.19	-1.53
12,919.0	89.87	269.99	7,022.5	-1,361.5	-5,760.1	5,909.1	1.13	-1.11	0.23
13,014.0	89.34	269.34	7,023.2	-1,362.1	-5,855.1	6,002.7	0.88	-0.56	-0.68
13,109.0	88.72	268.73	7,024.8	-1,363.7	-5,950.1	6,096.5	0.92	-0.65	-0.64
13,204.0	90.13	268.45	7,025.8	-1,366.0	-6,045.0	6,190.4	1.51	1.48	-0.29
13,299.0	89.34	267.92	7,026.2	-1,369.0	-6,140.0	6,284.5	1.00	-0.83	-0.56
13,394.0	89.25	269.03	7,027.4	-1,371.6	-6,234.9	6,378.4	1.17	-0.09	1.17
13,489.0	90.57	270.08	7,027.5	-1,372.3	-6,329.9	6,472.1	1.78	1.39	1.11
13,584.0	89.87	269.97	7,027.1	-1,372.3	-6,424.9	6,565.6	0.75	-0.74	-0.12
13,679.0	88.46	268.71	7,028.5	-1,373.4	-6,519.9	6,659.4	1.99	-1.48	-1.33
13,774.0	89.69	269.81	7,030.1	-1,374.6	-6,614.9	6,753.1	1.74	1.29	1.16
13,868.0	90.31	270.66	7,030.1	-1,374.2	-6,708.9	6,845.6	1.12	0.66	0.90
13,963.0	89.52	270.85	7,030.2	-1,372.9	-6,803.9	6,938.9	0.86	-0.83	0.20
14,058.0	90.13	270.61	7,030.5	-1,371.7	-6,898.9	7,032.3	0.69	0.64	-0.25
14,153.0	89.25	269.59	7,031.0	-1,371.6	-6,993.9	7,125.8	1.42	-0.93	-1.07
14,248.0	89.60	269.27	7,032.0	-1,372.5	-7,088.8	7,219.5	0.50	0.37	-0.34
14,342.0	90.31	269.27	7,032.0	-1,373.7	-7,182.8	7,312.3	0.76	0.76	0.00
14,437.0	89.96	268.34	7,031.8	-1,375.7	-7,277.8	7,406.1	1.05	-0.37	-0.98
14,532.0	89.78	267.95	7,032.0	-1,378.8	-7,372.8	7,500.2	0.45	-0.19	-0.41

Company:	Bayswater Exploration & Production, LLC	Local Co-ordinate Reference:	Well Carlson K-15-16HC
Project:	SEC.15-T5N-R65W	TVD Reference:	WELL @ 4643.5ft (RKB - 22.5')
Site:	Carlson 15-D Pad Sec.15-T5N-R65W	MD Reference:	WELL @ 4643.5ft (RKB - 22.5')
Well:	Carlson K-15-16HC	North Reference:	True
Wellbore:	Wellbore #1	Survey Calculation Method:	Minimum Curvature
Design:	Wellbore #1	Database:	EDMNEW

Survey									
Measured Depth (ft)	Inclination (°)	Azimuth (°)	Vertical Depth (ft)	+N/-S (ft)	+E/-W (ft)	Vertical Section (ft)	Dogleg Rate (°/100ft)	Build Rate (°/100ft)	Turn Rate (°/100ft)
14,627.0	89.78	268.38	7,032.4	-1,381.8	-7,467.7	7,594.2	0.45	0.00	0.45
14,722.0	89.25	269.06	7,033.2	-1,383.9	-7,562.7	7,688.1	0.91	-0.56	0.72
14,817.0	90.31	269.25	7,033.6	-1,385.3	-7,657.7	7,781.9	1.13	1.12	0.20
14,920.0	90.75	268.41	7,032.6	-1,387.4	-7,760.6	7,883.7	0.92	0.43	-0.82
15,003.0	90.75	268.41	7,031.5	-1,389.7	-7,843.6	7,965.8	0.00	0.00	0.00
BHL 2395'FNL, 2337'FWL, SEC.16									

Design Targets									
Target Name	Dip Angle (°)	Dip Dir. (°)	TVD (ft)	+N/-S (ft)	+E/-W (ft)	Northing (ft)	Easting (ft)	Latitude	Longitude
SHL 1054'FNL, 384'FI - hit/miss target - Shape - Point	0.00	0.00	1.0	0.0	0.0	1,391,065.32	3,239,126.97	40.403698	-104.641347
WP #1 (K-15-16HC) - survey misses target center by 10.9ft at 7954.6ft MD (6967.5 TVD, -1336.8 N, -796.9 E) - Point	0.00	0.00	6,978.0	-1,339.9	-796.6	1,389,717.80	3,238,343.42	40.400020	-104.644207
WP #2 (K-15-16HC) - survey misses target center by 7.8ft at 8652.6ft MD (6980.5 TVD, -1346.6 N, -1494.6 E) - Point	0.00	0.00	6,988.0	-1,344.3	-1,494.6	1,389,706.65	3,237,645.52	40.400008	-104.646713
WP #3 (K-15-16HC) - survey misses target center by 3.4ft at 9051.6ft MD (6987.3 TVD, -1343.8 N, -1893.6 E) - Point	0.00	0.00	6,989.0	-1,346.8	-1,893.5	1,389,700.28	3,237,246.68	40.400001	-104.648145
WP #4 (K-15-16HC) - survey misses target center by 6.7ft at 9450.6ft MD (6989.3 TVD, -1349.0 N, -2292.5 E) - Point	0.00	0.00	6,996.0	-1,349.3	-2,292.5	1,389,693.92	3,236,847.74	40.399994	-104.649578
WP #5 (K-15-16HC) - survey misses target center by 6.8ft at 10374.0ft MD (6997.7 TVD, -1352.5 N, -3215.7 E) - Point	0.00	0.00	7,004.0	-1,355.1	-3,215.5	1,389,679.18	3,235,924.88	40.399978	-104.652892
WP #6 (K-15-16HC) - survey misses target center by 5.1ft at 10922.0ft MD (7010.6 TVD, -1361.1 N, -3763.5 E) - Point	0.00	0.00	7,015.0	-1,358.6	-3,763.4	1,389,670.38	3,235,377.06	40.399968	-104.654859
WP #7 (K-15-16HC) - survey misses target center by 7.0ft at 11596.1ft MD (7018.8 TVD, -1369.4 N, -4437.4 E) - Point	0.00	0.00	7,021.0	-1,362.8	-4,437.4	1,389,659.65	3,234,703.16	40.399956	-104.657279
WP #8 (K-15-16HC) - survey misses target center by 2.5ft at 12369.2ft MD (7027.0 TVD, -1369.9 N, -5210.5 E) - Point	0.00	0.00	7,026.0	-1,367.6	-5,210.4	1,389,647.37	3,233,930.27	40.399942	-104.660054
BHL 2395'FNL, 2337'FI - survey misses target center by 7.9ft at 15003.0ft MD (7031.5 TVD, -1389.7 N, -7843.6 E) - Point	0.00	0.00	7,026.0	-1,384.2	-7,844.9	1,389,605.25	3,231,296.21	40.399895	-104.669513

Checked By: _____	Approved By: _____	Date: _____
-------------------	--------------------	-------------