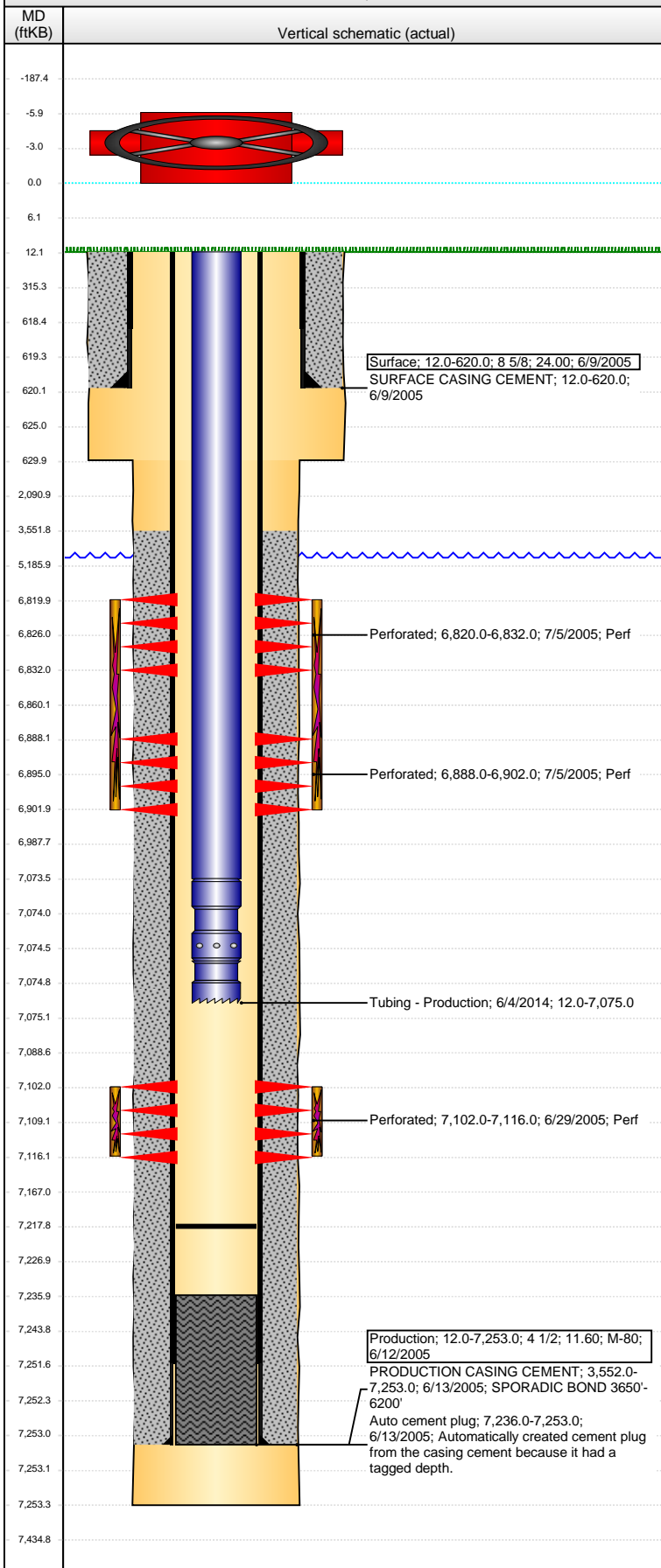


Well Name: GERRITY STATE G36-17

VERTICAL - ORIGINAL HOLE, 1/4/2016 8:40:38 AM



Well Header

API 05-123-22820	Business Unit DJ BASIN	District 15	Well Config VERTICAL
Original KB Elevation (ft) 4,841.00	KB - GL / MSL (ftKB) 12.00	Spud Date 6/9/2005	P & A Date

Comment

CBP pushed to 7176' 7/6/06

Directions To Well

RD 38 & RD 49. NORTH 5/10. WEST 1/10. NORTH 3/10 INTO.

Congressional Location

Quarter 1	Quarter 2	Quarter 3	Quarter 4	Section	Township	Twtnshp N...	Range	Rng E/W Dir
		NW	NE	36	4	N	65	W

Bottom Hole Location

North-South Distance (ft)	From N or S Line	East-West Distance (ft)	From E or W Line
---------------------------	------------------	-------------------------	------------------

Plug Back Total Depths

Date	Depth (ftKB)	Method	Com
6/12/2005	7,236.0	CASING TALLY	GUIDE SHOE
6/27/2005	7,212.0	CASED HOLE LOG	
7/6/2006	7,176.0	TAG	C/O LANDED TBG
9/18/2009	7,172.0	TAG	BIT & SCRAPER.
10/5/2009	7,218.0	TAG	C/O TO 7218' KB.

Wellbore Sections

Section Des	Size (in)	Act Top, MD (ftKB)	Act Btm, MD (ftKB)
SURFACE	12 1/4	12.0	630.0
PRODUCTION	7 7/8	630.0	7,253.3

Zone Statuses

Zone Name	Status Date	Status	Fluid Type	Job	Prod Method
NIOBRARA	7/7/2005	PR	Gas	DRILLING/CO...	
CODELL	7/7/2005	PR	Gas	DRILLING/CO...	
CODELL	11/9/2009	PR	Gas	RE-FRAC, 9/18...	

Casing Strings

Surface, 620.0ftKB

Casing Description	Run Date	OD (in)	Wt/Len (l...)	Grade	Top, MD (ft...)	MD (ftKB)
Surface	6/9/2005	8 5/8	24.00		12.0	620.0

Production, 7,253.0ftKB

Casing Description	Run Date	OD (in)	Wt/Len (l...)	Grade	Top, MD (ft...)	MD (ftKB)
Production	6/12/2005	4 1/2	11.60	M-80	12.0	7,253.0

Cement

Description	Top Depth (ftKB)	Bottom Depth (ftKB)
SURFACE CASING CEMENT	12.0	620.0
Description	Top Depth (ftKB)	Bottom Depth (ftKB)
PRODUCTION CASING CEMENT	3,552.0	7,253.0

Tubing Strings

Tubing Description	Run Date	String...	ID (in)	Wt (lb/ft)	Grade	Len (ft)	Set De...
Tubing - Production	7/6/2006	2 3/8	1.995	4.70	J-55	7,068.07	
Tubing Description	Run Date	String...	ID (in)	Wt (lb/ft)	Grade	Len (ft)	Set De...
Tubing - Frac string	9/21/2009	2 7/8	2.441	6.50	N-80	7,012.99	
Tubing Description	Run Date	String...	ID (in)	Wt (lb/ft)	Grade	Len (ft)	Set De...
Tubing - Production	10/2/2009	2 3/8	1.995	4.70	J-55	7,056.78	
Tubing Description	Run Date	String...	ID (in)	Wt (lb/ft)	Grade	Len (ft)	Set De...
Tubing - Production	6/4/2014	2 3/8	1.995	4.70	J-55	7,063.00	

Tubing Components

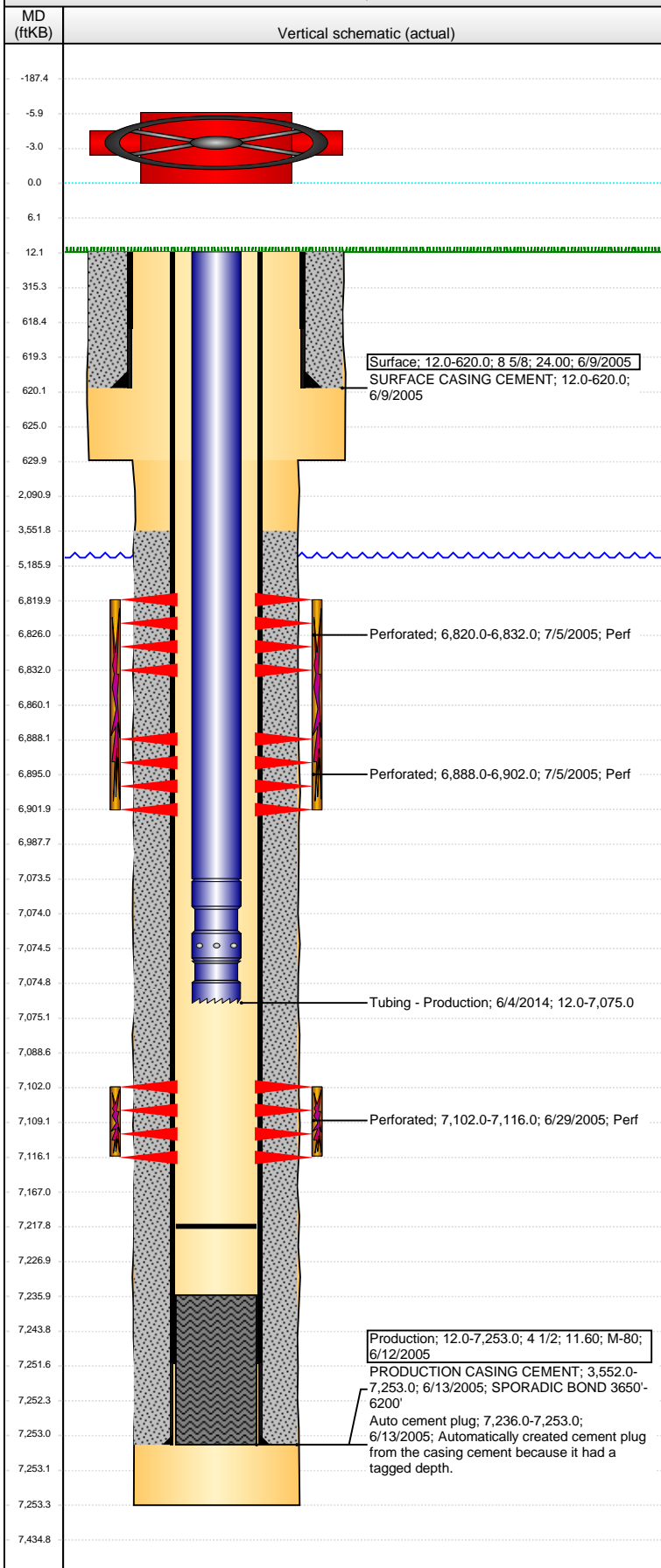
Item Des	OD (in)	Wt (lb/ft)	Grade	Jts	Len (ft)	Btm (ftKB)	Btm (TVD) (ftKB)
Tubing	2 3/8	4.70	J-55	229	7,061.50	7,073.5	
Pump Seating Nipple	2 3/8	1.10	X	1	1.10	7,074.6	
Notched collar	2 3/8	0.00	X	1	0.40	7,075.0	

Perforation Data

Zone	Bnch/St g	Entered Shot Total	Top (ftKB)	Btm (ftKB)	Date
NIOBRARA, ORIGINAL HOLE		72	6,820.00	6,832.00	7/5/2005
NIOBRARA, ORIGINAL HOLE		84	6,888.00	6,902.00	7/5/2005
CODELL, ORIGINAL HOLE		56	7,102.00	7,116.00	6/29/2005

Well Name: GERRITY STATE G36-17

VERTICAL - ORIGINAL HOLE, 1/4/2016 8:40:40 AM



Stimulations & Treatments

Date	Zone	Primary Job Type
7/5/2005	NIORARA, ORIGINAL HOLE	DRILLING/COMPLETION - ORIGINAL
Technical Result		
Tech Result Details		
Tech Result Note		
Comment		
Date	Zone	Primary Job Type
7/5/2005	CODELL, ORIGINAL HOLE	DRILLING/COMPLETION - ORIGINAL
Technical Result		
Tech Result Details		
Tech Result Note		
Comment		
Date	Zone	Primary Job Type
9/30/2009	CODELL, ORIGINAL HOLE	RE-FRAC
Technical Result		
Success		
Tech Result Details		
According to Plan		
Tech Result Note		
Comment		
PRE-ISIP = 2832 PSI, 5-MIN = 1711 PSI. RATE WAS INCREASED WITH THE EXCESSIVE LEAKOFF. DURING THE 2.0 - 4.0 PPG SAND RAMP THE MAG FLOW TUBE WAS CHANGED OUT TO THE TURBINE DUE TO EXCESSIVE WATER USAGE. TURBINE WAS USED FOR THE REMAINDER OF THE TREATMENT. ALSO, A PUMP WENT DOWN IN THE 4.0 PPG SAND. POST-ISIP = 3699 PSI, 5-MIN = 3269 PSI.		

Other In Hole

Run Date	Des	OD (in)	Top (ftKB)	Btm (ftKB)

Logs

Date	Type	Top, MD (ftKB)	Btm, MD (ftKB)
6/13/2005	COMPENSATED DENSITY	4,200.0	7,241.0
6/13/2005	INDUCTION	620.0	7,261.0
6/27/2005	CBL/CCL/GR	3,350.0	7,209.0
9/11/2013	GYRO	12.0	7,000.0