

# Bayswater Exploration & Production, LLC

Well Name: **Carlson I-15-16HN**

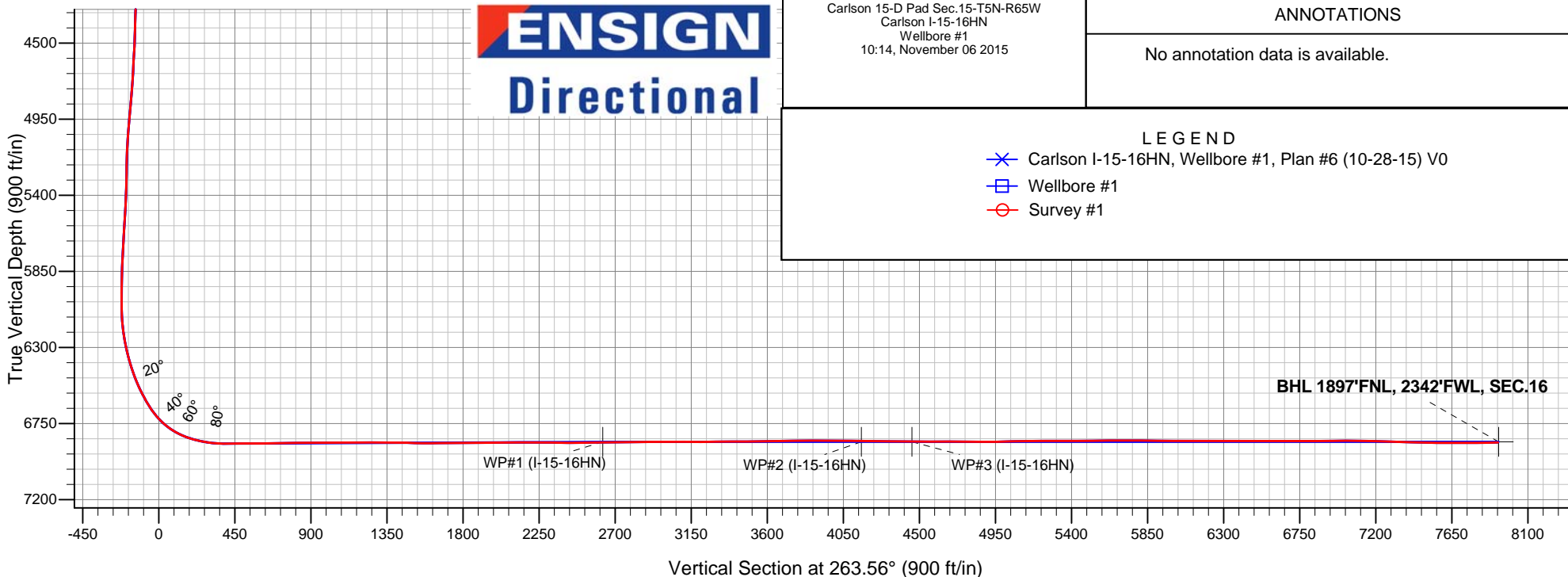
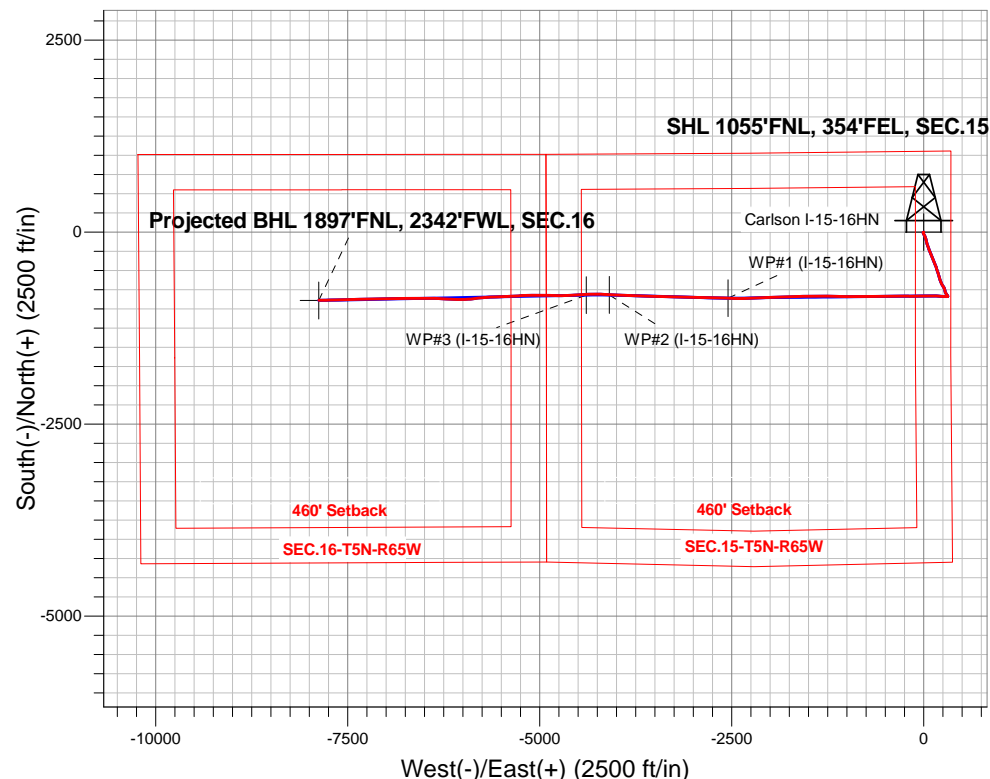
Surface Location: Carlson 15-D Pad Sec.15-T5N-R65W  
North American Datum 1983 , US State Plane 1983 , Colorado Northern Zone

Ground Elevation: 4621.0

+N/-S	+E/-W	Northing	Easting	Latitude	Longitude	Slot
0.0	0.0	1391065.23	3239157.05	40.403697	-104.641239	
RKB - 22.5' WELL @ 4643.5ft (RKB - 22.5')						

## FINAL SURVEY

**Projected Bottom Hole Location**  
**14870'MD 6862'TVD 886'S & 7874'W of SHL**  
**91.2 degree Incl @ 269.9 degree AZM**





# **Bayswater Exploration & Production, LLC**

**SEC.15-T5N-R65W**

**Carlson 15-D Pad Sec.15-T5N-R65W**

**Carlson I-15-16HN**

**Wellbore #1**

**Survey: Survey #1**

## **Standard Survey Report**

**06 November, 2015**



**BAYSWATER**  
**EXPLORATION & PRODUCTION, LLC**

<b>Company:</b>	Bayswater Exploration & Production, LLC	<b>Local Co-ordinate Reference:</b>	Well Carlson I-15-16HN
<b>Project:</b>	SEC.15-T5N-R65W	<b>TVD Reference:</b>	WELL @ 4643.5ft (RKB - 22.5')
<b>Site:</b>	Carlson 15-D Pad Sec.15-T5N-R65W	<b>MD Reference:</b>	WELL @ 4643.5ft (RKB - 22.5')
<b>Well:</b>	Carlson I-15-16HN	<b>North Reference:</b>	True
<b>Wellbore:</b>	Wellbore #1	<b>Survey Calculation Method:</b>	Minimum Curvature
<b>Design:</b>	Wellbore #1	<b>Database:</b>	EDMNEW

<b>Project</b>	SEC.15-T5N-R65W, Weld County, Colorado		
<b>Map System:</b>	US State Plane 1983	<b>System Datum:</b>	Mean Sea Level
<b>Geo Datum:</b>	North American Datum 1983		Using Well Reference Point
<b>Map Zone:</b>	Colorado Northern Zone		Using geodetic scale factor

Site	Carlson 15-D Pad Sec.15-T5N-R65W				
Site Position:		Northing:	1,391,065.25 ft	Latitude:	40.403695
From:	Lat/Long	Easting:	3,239,231.97 ft	Longitude:	-104.640970
Position Uncertainty:	0.0 ft	Slot Radius:	"	Grid Convergence:	0.56 °

Well	Carlson I-15-16HN					
Well Position	+N/-S	0.0 ft	Northing:	1,391,065.23 ft	Latitude:	40.403697
	+E/-W	0.0 ft	Easting:	3,239,157.05 ft	Longitude:	-104.641239
Position Uncertainty		0.0 ft	Wellhead Elevation:	ft	Ground Level:	4,621.0 ft

<b>Wellbore</b>	Wellbore #1				
<b>Magnetics</b>	<b>Model Name</b>	<b>Sample Date</b>	<b>Declination (°)</b>	<b>Dip Angle (°)</b>	<b>Field Strength (nT)</b>
	IGRF2010	10/17/2015	8.21	66.92	52,690

<b>Design</b>	Wellbore #1				
<b>Audit Notes:</b>					
<b>Version:</b>	1.0	<b>Phase:</b>	ACTUAL	<b>Tie On Depth:</b>	0.0
<b>Vertical Section:</b>	<b>Depth From (TVD) (ft)</b>	<b>+N/-S (ft)</b>	<b>+E/-W (ft)</b>	<b>Direction (°)</b>	
	0.0	0.0	0.0	263.56	

<b>Survey Program</b>	<b>Date</b>	11/6/2015			
<b>From (ft)</b>	<b>To (ft)</b>	<b>Survey (Wellbore)</b>	<b>Tool Name</b>	<b>Description</b>	
252.0	14,870.0	Survey #1 (Wellbore #1)	MWD	MWD - Standard	

<b>Survey</b>										
<b>Measured Depth (ft)</b>	<b>Inclination (°)</b>	<b>Azimuth (°)</b>	<b>Vertical Depth (ft)</b>	<b>+N/-S (ft)</b>	<b>+E/-W (ft)</b>	<b>Vertical Section (ft)</b>	<b>Dogleg Rate (°/100ft)</b>	<b>Build Rate (°/100ft)</b>	<b>Turn Rate (°/100ft)</b>	
0.0	0.00	0.00	0.0	0.0	0.0	0.0	0.00	0.00	0.00	
1.0	0.00	219.30	1.0	0.0	0.0	0.0	0.00	0.00	0.00	
<b>SHL 1055'FNL, 354'FEL, SEC.15</b>										
252.0	0.40	219.30	252.0	-0.7	-0.6	0.6	0.16	0.16	0.00	
344.0	0.50	219.50	344.0	-1.2	-1.0	1.1	0.11	0.11	0.22	
436.0	0.40	201.40	436.0	-1.8	-1.4	1.6	0.19	-0.11	-19.67	
528.0	0.30	255.20	528.0	-2.2	-1.7	2.0	0.36	-0.11	58.48	
620.0	0.40	250.30	620.0	-2.4	-2.3	2.5	0.11	0.11	-5.33	
712.0	0.40	262.80	712.0	-2.5	-2.9	3.2	0.09	0.00	13.59	
805.0	0.70	256.10	805.0	-2.7	-3.8	4.0	0.33	0.32	-7.20	
923.0	1.00	254.30	923.0	-3.2	-5.5	5.8	0.26	0.25	-1.53	
1,018.0	1.40	158.70	1,018.0	-4.5	-5.8	6.3	1.89	0.42	-100.63	
1,113.0	3.50	167.30	1,112.9	-8.4	-4.8	5.7	2.24	2.21	9.05	

<b>Company:</b>	Bayswater Exploration & Production, LLC	<b>Local Co-ordinate Reference:</b>	Well Carlson I-15-16HN
<b>Project:</b>	SEC.15-T5N-R65W	<b>TVD Reference:</b>	WELL @ 4643.5ft (RKB - 22.5')
<b>Site:</b>	Carlson 15-D Pad Sec.15-T5N-R65W	<b>MD Reference:</b>	WELL @ 4643.5ft (RKB - 22.5')
<b>Well:</b>	Carlson I-15-16HN	<b>North Reference:</b>	True
<b>Wellbore:</b>	Wellbore #1	<b>Survey Calculation Method:</b>	Minimum Curvature
<b>Design:</b>	Wellbore #1	<b>Database:</b>	EDMNEW

Survey

Measured Depth (ft)	Inclination (°)	Azimuth (°)	Vertical Depth (ft)	+N/-S (ft)	+E/-W (ft)	Vertical Section (ft)	Dogleg Rate (°/100ft)	Build Rate (°/100ft)	Turn Rate (°/100ft)
1,205.0	5.30	160.30	1,204.6	-15.1	-2.7	4.4	2.04	1.96	-7.61
1,298.0	6.20	158.90	1,297.1	-23.8	0.5	2.1	0.98	0.97	-1.51
1,390.0	7.60	151.50	1,388.5	-33.8	5.2	-1.4	1.80	1.52	-8.04
1,482.0	8.10	147.10	1,479.6	-44.6	11.6	-6.6	0.85	0.54	-4.78
1,574.0	8.80	152.40	1,570.6	-56.3	18.4	-12.0	1.14	0.76	5.76
1,666.0	9.10	158.70	1,661.5	-69.3	24.3	-16.4	1.11	0.33	6.85
1,758.0	9.80	169.80	1,752.2	-83.8	28.4	-18.8	2.12	0.76	12.07
1,850.0	11.30	167.80	1,842.7	-100.3	31.7	-20.2	1.68	1.63	-2.17
1,942.0	12.10	164.30	1,932.8	-118.4	36.2	-22.7	1.16	0.87	-3.80
2,034.0	10.70	162.00	2,022.9	-135.8	41.4	-25.9	1.60	-1.52	-2.50
2,126.0	12.00	162.20	2,113.1	-153.0	47.0	-29.5	1.41	1.41	0.22
2,218.0	12.00	160.60	2,203.1	-171.2	53.1	-33.6	0.36	0.00	-1.74
2,311.0	12.20	162.40	2,294.1	-189.7	59.3	-37.6	0.46	0.22	1.94
2,403.0	12.80	163.40	2,383.9	-208.7	65.1	-41.3	0.69	0.65	1.09
2,495.0	11.30	159.90	2,473.9	-226.9	71.1	-45.2	1.81	-1.63	-3.80
2,590.0	12.10	158.00	2,566.9	-244.9	78.0	-50.1	0.93	0.84	-2.00
2,685.0	14.20	159.40	2,659.4	-265.0	85.9	-55.6	2.24	2.21	1.47
2,780.0	14.60	159.20	2,751.4	-287.1	94.2	-61.4	0.42	0.42	-0.21
2,875.0	12.80	157.80	2,843.7	-308.1	102.5	-67.3	1.93	-1.89	-1.47
2,971.0	11.70	155.30	2,937.5	-326.8	110.5	-73.2	1.27	-1.15	-2.60
3,066.0	10.60	154.10	3,030.7	-343.4	118.4	-79.1	1.18	-1.16	-1.26
3,161.0	10.20	158.00	3,124.2	-359.0	125.4	-84.3	0.85	-0.42	4.11
3,256.0	10.00	157.60	3,217.7	-374.5	131.6	-88.8	0.22	-0.21	-0.42
3,351.0	9.60	156.20	3,311.3	-389.3	138.0	-93.5	0.49	-0.42	-1.47
3,446.0	10.10	157.10	3,404.9	-404.2	144.4	-98.2	0.55	0.53	0.95
3,542.0	10.10	161.70	3,499.4	-420.0	150.3	-102.3	0.84	0.00	4.79
3,637.0	10.80	159.40	3,592.8	-436.2	156.1	-106.2	0.86	0.74	-2.42
3,732.0	13.00	163.40	3,685.8	-454.8	162.3	-110.3	2.47	2.32	4.21
3,827.0	13.70	163.60	3,778.2	-475.8	168.5	-114.1	0.74	0.74	0.21
3,922.0	14.10	163.10	3,870.4	-497.7	175.0	-118.1	0.44	0.42	-0.53
4,017.0	13.20	162.90	3,962.8	-519.1	181.6	-122.3	0.95	-0.95	-0.21
4,113.0	12.00	156.60	4,056.5	-538.8	188.8	-127.2	1.90	-1.25	-6.56
4,208.0	11.80	159.00	4,149.4	-556.9	196.2	-132.5	0.56	-0.21	2.53
4,303.0	11.20	165.70	4,242.5	-574.9	202.0	-136.2	1.54	-0.63	7.05
4,398.0	12.00	167.60	4,335.6	-593.5	206.4	-138.5	0.93	0.84	2.00
4,493.0	11.90	165.70	4,428.5	-612.6	210.9	-140.9	0.43	-0.11	-2.00
4,588.0	11.80	160.80	4,521.5	-631.3	216.5	-144.4	1.06	-0.11	-5.16
4,684.0	10.30	156.60	4,615.7	-648.5	223.1	-149.0	1.77	-1.56	-4.38
4,779.0	11.00	154.80	4,709.1	-664.5	230.4	-154.4	0.82	0.74	-1.89
4,874.0	11.50	153.90	4,802.2	-681.2	238.4	-160.5	0.56	0.53	-0.95
4,969.0	12.30	144.30	4,895.2	-697.9	248.5	-168.7	2.24	0.84	-10.11
5,064.0	12.80	148.30	4,987.9	-715.1	259.9	-178.1	1.06	0.53	4.21
5,160.0	10.30	159.40	5,082.0	-732.1	268.5	-184.7	3.47	-2.60	11.56
5,255.0	9.10	163.10	5,175.6	-747.3	273.7	-188.2	1.42	-1.26	3.89
5,350.0	8.80	166.90	5,269.5	-761.5	277.5	-190.4	0.70	-0.32	4.00
5,445.0	8.80	163.80	5,363.4	-775.6	281.2	-192.5	0.50	0.00	-3.26
5,540.0	9.00	155.90	5,457.2	-789.4	286.3	-196.0	1.30	0.21	-8.32
5,635.0	8.40	147.30	5,551.1	-802.0	293.0	-201.3	1.51	-0.63	-9.05
5,730.0	7.80	144.40	5,645.2	-813.1	300.5	-207.5	0.76	-0.63	-3.05
5,825.0	5.00	140.00	5,739.6	-821.5	307.0	-212.9	2.99	-2.95	-4.63
5,920.0	3.60	138.10	5,834.3	-826.9	311.6	-216.9	1.48	-1.47	-2.00
6,015.0	1.50	158.90	5,929.2	-830.3	314.0	-219.0	2.38	-2.21	21.89
6,111.0	1.10	147.10	6,025.2	-832.2	315.0	-219.7	0.50	-0.42	-12.29
6,206.0	3.30	235.70	6,120.1	-834.5	313.2	-217.7	3.63	2.32	93.26

<b>Company:</b>	Bayswater Exploration & Production, LLC	<b>Local Co-ordinate Reference:</b>	Well Carlson I-15-16HN
<b>Project:</b>	SEC.15-T5N-R65W	<b>TVD Reference:</b>	WELL @ 4643.5ft (RKB - 22.5')
<b>Site:</b>	Carlson 15-D Pad Sec.15-T5N-R65W	<b>MD Reference:</b>	WELL @ 4643.5ft (RKB - 22.5')
<b>Well:</b>	Carlson I-15-16HN	<b>North Reference:</b>	True
<b>Wellbore:</b>	Wellbore #1	<b>Survey Calculation Method:</b>	Minimum Curvature
<b>Design:</b>	Wellbore #1	<b>Database:</b>	EDMNEW

## Survey

Measured Depth (ft)	Inclination (°)	Azimuth (°)	Vertical Depth (ft)	+N/-S (ft)	+E/-W (ft)	Vertical Section (ft)	Dogleg Rate (°/100ft)	Build Rate (°/100ft)	Turn Rate (°/100ft)
6,254.0	5.40	257.30	6,168.0	-835.8	309.9	-214.2	5.48	4.38	45.00
6,301.0	8.10	255.20	6,214.7	-837.1	304.5	-208.8	5.77	5.74	-4.47
6,349.0	10.60	263.40	6,262.0	-838.5	296.9	-201.0	5.89	5.21	17.08
6,396.0	12.60	268.00	6,308.1	-839.2	287.5	-191.6	4.69	4.26	9.79
6,492.0	17.10	274.70	6,400.8	-838.4	262.9	-167.3	5.01	4.69	6.98
6,586.0	22.00	276.50	6,489.4	-835.2	231.6	-136.5	5.25	5.21	1.91
6,682.0	27.90	273.60	6,576.4	-831.8	191.3	-96.8	6.27	6.15	-3.02
6,730.0	30.20	273.10	6,618.4	-830.4	168.0	-73.9	4.82	4.79	-1.04
6,777.0	33.20	270.10	6,658.4	-829.8	143.4	-49.4	7.21	6.38	-6.38
6,825.0	38.90	271.00	6,697.1	-829.5	115.1	-21.4	11.93	11.88	1.88
6,872.0	45.00	269.90	6,732.1	-829.3	83.7	9.8	13.07	12.98	-2.34
6,920.0	51.30	269.40	6,764.1	-829.5	48.0	45.3	13.15	13.13	-1.04
6,967.0	58.20	268.90	6,791.2	-830.1	9.6	83.5	14.71	14.68	-1.06
7,015.0	64.90	269.20	6,814.1	-830.8	-32.5	125.5	13.97	13.96	0.63
7,062.0	70.60	268.40	6,831.8	-831.7	-76.0	168.8	12.23	12.13	-1.70
7,110.0	74.80	268.40	6,846.1	-833.0	-121.8	214.4	8.75	8.75	0.00
7,157.0	78.90	270.30	6,856.8	-833.5	-167.6	259.9	9.57	8.72	4.04
7,205.0	83.30	272.10	6,864.2	-832.5	-215.0	306.9	9.89	9.17	3.75
7,252.0	87.00	271.40	6,868.2	-831.0	-261.8	353.3	8.01	7.87	-1.49
7,327.0	91.50	266.60	6,869.2	-832.4	-336.7	427.9	8.77	6.00	-6.40
7,422.0	90.10	269.90	6,867.9	-835.3	-431.6	522.6	3.77	-1.47	3.47
7,517.0	90.00	269.10	6,867.8	-836.1	-526.6	617.0	0.85	-0.11	-0.84
7,613.0	90.80	270.70	6,867.1	-836.2	-622.6	712.5	1.86	0.83	1.67
7,708.0	91.60	270.10	6,865.1	-835.6	-717.6	806.8	1.05	0.84	-0.63
7,803.0	90.90	269.10	6,863.0	-836.2	-812.6	901.2	1.28	-0.74	-1.05
7,899.0	89.30	268.00	6,862.9	-838.7	-908.5	996.8	2.02	-1.67	-1.15
7,994.0	90.20	271.70	6,863.3	-838.9	-1,003.5	1,091.2	4.01	0.95	3.89
8,089.0	90.40	271.20	6,862.8	-836.5	-1,098.5	1,185.3	0.57	0.21	-0.53
8,185.0	90.10	271.50	6,862.4	-834.3	-1,194.5	1,280.5	0.44	-0.31	0.31
8,280.0	89.90	271.00	6,862.4	-832.2	-1,289.4	1,374.6	0.57	-0.21	-0.53
8,374.0	88.20	268.70	6,863.9	-832.4	-1,383.4	1,468.0	3.04	-1.81	-2.45
8,469.0	89.40	269.40	6,865.9	-834.0	-1,478.4	1,562.6	1.46	1.26	0.74
8,564.0	90.80	269.20	6,865.8	-835.2	-1,573.4	1,657.1	1.49	1.47	-0.21
8,656.0	90.00	267.80	6,865.1	-837.6	-1,665.3	1,748.7	1.75	-0.87	-1.52
8,748.0	90.60	267.10	6,864.6	-841.7	-1,757.2	1,840.5	1.00	0.65	-0.76
8,840.0	90.60	268.40	6,863.7	-845.3	-1,849.2	1,932.3	1.41	0.00	1.41
8,931.0	91.00	268.50	6,862.4	-847.7	-1,940.1	2,022.9	0.45	0.44	0.11
9,023.0	89.70	268.50	6,861.8	-850.1	-2,032.1	2,114.6	1.41	-1.41	0.00
9,115.0	90.00	268.50	6,862.1	-852.6	-2,124.0	2,206.2	0.33	0.33	0.00
9,207.0	89.40	265.70	6,862.6	-857.2	-2,215.9	2,298.1	3.11	-0.65	-3.04
9,299.0	88.60	266.40	6,864.2	-863.5	-2,307.7	2,390.0	1.16	-0.87	0.76
9,390.0	91.30	271.90	6,864.2	-864.9	-2,398.6	2,480.5	6.73	2.97	6.04
9,482.0	90.70	272.60	6,862.6	-861.3	-2,490.5	2,571.4	1.00	-0.65	0.76
9,538.8	90.76	271.92	6,861.9	-859.0	-2,547.3	2,627.5	1.20	0.11	-1.20
<b>WP#1 (I-15-16HN)</b>									
9,574.0	90.80	271.50	6,861.4	-858.0	-2,582.5	2,662.4	1.20	0.11	-1.20
9,666.0	90.70	271.40	6,860.2	-855.7	-2,674.4	2,753.5	0.15	-0.11	-0.11
9,758.0	90.70	270.70	6,859.1	-854.0	-2,766.4	2,844.7	0.76	0.00	-0.76
9,849.0	90.00	271.90	6,858.6	-851.9	-2,857.4	2,934.9	1.53	-0.77	1.32
9,941.0	89.90	271.40	6,858.6	-849.3	-2,949.4	3,026.0	0.55	-0.11	-0.54
10,033.0	89.60	271.00	6,859.0	-847.3	-3,041.3	3,117.2	0.54	-0.33	-0.43
10,124.0	90.70	272.20	6,858.8	-844.8	-3,132.3	3,207.3	1.79	1.21	1.32
10,216.0	90.60	272.20	6,857.8	-841.3	-3,224.2	3,298.2	0.11	-0.11	0.00
10,308.0	90.60	271.50	6,856.8	-838.3	-3,316.2	3,389.2	0.76	0.00	-0.76

<b>Company:</b>	Bayswater Exploration & Production, LLC	<b>Local Co-ordinate Reference:</b>	Well Carlson I-15-16HN
<b>Project:</b>	SEC.15-T5N-R65W	<b>TVD Reference:</b>	WELL @ 4643.5ft (RKB - 22.5')
<b>Site:</b>	Carlson 15-D Pad Sec.15-T5N-R65W	<b>MD Reference:</b>	WELL @ 4643.5ft (RKB - 22.5')
<b>Well:</b>	Carlson I-15-16HN	<b>North Reference:</b>	True
<b>Wellbore:</b>	Wellbore #1	<b>Survey Calculation Method:</b>	Minimum Curvature
<b>Design:</b>	Wellbore #1	<b>Database:</b>	EDMNEW

## Survey

Measured Depth (ft)	Inclination (°)	Azimuth (°)	Vertical Depth (ft)	+N/-S (ft)	+E/-W (ft)	Vertical Section (ft)	Dogleg Rate (°/100ft)	Build Rate (°/100ft)	Turn Rate (°/100ft)
10,400.0	90.20	270.70	6,856.1	-836.5	-3,408.1	3,480.4	0.97	-0.43	-0.87
10,492.0	91.10	271.70	6,855.1	-834.6	-3,500.1	3,571.6	1.46	0.98	1.09
10,584.0	91.00	271.70	6,853.4	-831.9	-3,592.1	3,662.7	0.11	-0.11	0.00
10,675.0	90.90	271.00	6,851.9	-829.7	-3,683.0	3,752.8	0.78	-0.11	-0.77
10,767.0	90.30	271.70	6,850.9	-827.6	-3,775.0	3,844.0	1.00	-0.65	0.76
10,859.0	89.30	271.40	6,851.3	-825.1	-3,867.0	3,935.1	1.13	-1.09	-0.33
10,951.0	89.40	272.80	6,852.3	-821.7	-3,958.9	4,026.1	1.53	0.11	1.52
11,043.0	89.30	272.90	6,853.4	-817.1	-4,050.8	4,116.8	0.15	-0.11	0.11
11,083.5	89.34	273.60	6,853.8	-814.8	-4,091.2	4,156.7	1.74	0.11	1.74
<b>WP#2 (I-15-16HN)</b>									
11,135.0	89.40	274.50	6,854.4	-811.2	-4,142.6	4,207.4	1.74	0.11	1.74
11,226.0	89.40	271.70	6,855.3	-806.3	-4,233.4	4,297.1	3.08	0.00	-3.08
11,318.0	89.80	267.10	6,856.0	-807.2	-4,325.4	4,388.6	5.02	0.43	-5.00
11,384.4	89.94	267.24	6,856.1	-810.5	-4,391.7	4,454.9	0.29	0.21	0.21
<b>WP#3 (I-15-16HN)</b>									
11,414.0	90.00	267.30	6,856.2	-811.9	-4,421.3	4,484.4	0.29	0.21	0.21
11,509.0	89.90	266.30	6,856.2	-817.2	-4,516.1	4,579.3	1.06	-0.11	-1.05
11,604.0	89.50	267.50	6,856.7	-822.4	-4,611.0	4,674.1	1.33	-0.42	1.26
11,699.0	89.30	268.20	6,857.7	-825.9	-4,705.9	4,768.8	0.77	-0.21	0.74
11,794.0	89.60	271.90	6,858.6	-825.9	-4,800.9	4,863.2	3.91	0.32	3.89
11,889.0	91.00	272.10	6,858.1	-822.5	-4,895.8	4,957.2	1.49	1.47	0.21
11,985.0	91.70	269.40	6,855.9	-821.3	-4,991.8	5,052.4	2.90	0.73	-2.81
12,080.0	90.50	268.90	6,854.1	-822.7	-5,086.7	5,146.9	1.37	-1.26	-0.53
12,175.0	90.90	268.90	6,852.9	-824.5	-5,181.7	5,241.5	0.42	0.42	0.00
12,270.0	89.50	266.40	6,852.6	-828.4	-5,276.6	5,336.2	3.02	-1.47	-2.63
12,366.0	90.40	266.30	6,852.7	-834.5	-5,372.4	5,432.1	0.94	0.94	-0.10
12,461.0	90.20	268.20	6,852.2	-839.1	-5,467.3	5,526.9	2.01	-0.21	2.00
12,556.0	90.70	267.80	6,851.4	-842.4	-5,562.3	5,621.6	0.67	0.53	-0.42
12,651.0	89.90	267.70	6,850.9	-846.1	-5,657.2	5,716.4	0.85	-0.84	-0.11
12,746.0	89.60	264.00	6,851.3	-853.0	-5,751.9	5,811.3	3.91	-0.32	-3.89
12,842.0	89.60	262.00	6,852.0	-864.7	-5,847.2	5,907.3	2.08	0.00	-2.08
12,937.0	89.60	266.40	6,852.7	-874.3	-5,941.7	6,002.2	4.63	0.00	4.63
13,032.0	90.10	271.20	6,852.9	-876.3	-6,036.6	6,096.8	5.08	0.53	5.05
13,127.0	89.80	272.20	6,853.0	-873.5	-6,131.6	6,190.9	1.10	-0.32	1.05
13,223.0	90.00	272.90	6,853.2	-869.2	-6,227.5	6,285.7	0.76	0.21	0.73
13,318.0	89.50	272.60	6,853.6	-864.6	-6,322.4	6,379.5	0.61	-0.53	-0.32
13,413.0	90.00	271.40	6,854.0	-861.3	-6,417.3	6,473.4	1.37	0.53	-1.26
13,508.0	90.40	268.20	6,853.7	-861.6	-6,512.3	6,567.9	3.39	0.42	-3.37
13,603.0	89.40	270.50	6,853.8	-862.7	-6,607.3	6,662.4	2.64	-1.05	2.42
13,698.0	90.50	269.10	6,853.9	-863.1	-6,702.3	6,756.8	1.87	1.16	-1.47
13,793.0	90.00	269.60	6,853.5	-864.1	-6,797.3	6,851.3	0.74	-0.53	0.53
13,888.0	90.50	270.30	6,853.1	-864.2	-6,892.3	6,945.7	0.91	0.53	0.74
13,983.0	91.00	268.00	6,851.8	-865.6	-6,987.3	7,040.3	2.48	0.53	-2.42
14,078.0	87.50	269.20	6,853.1	-867.9	-7,082.2	7,134.9	3.89	-3.68	1.26
14,173.0	89.40	268.90	6,855.6	-869.5	-7,177.2	7,229.4	2.02	2.00	-0.32
14,268.0	88.20	268.50	6,857.6	-871.7	-7,272.1	7,324.0	1.33	-1.26	-0.42
14,363.0	88.10	268.70	6,860.7	-874.0	-7,367.0	7,418.6	0.24	-0.11	0.21
14,458.0	88.50	269.10	6,863.5	-875.8	-7,462.0	7,513.1	0.60	0.42	0.42
14,554.0	90.20	268.20	6,864.6	-878.1	-7,557.9	7,608.7	2.00	1.77	-0.94
14,649.0	90.00	267.50	6,864.4	-881.6	-7,652.9	7,703.5	0.77	-0.21	-0.74
14,744.0	90.40	268.40	6,864.1	-885.0	-7,747.8	7,798.2	1.04	0.42	0.95
14,807.0	91.20	269.90	6,863.2	-886.0	-7,810.8	7,860.9	2.70	1.27	2.38
14,870.0	91.20	269.90	6,861.9	-886.1	-7,873.8	7,923.5	0.00	0.00	0.00
<b>BHL 1900'FNL, 2338'FWL, SEC.16</b>									

<b>Company:</b>	Bayswater Exploration & Production, LLC	<b>Local Co-ordinate Reference:</b>	Well Carlson I-15-16HN
<b>Project:</b>	SEC.15-T5N-R65W	<b>TVD Reference:</b>	WELL @ 4643.5ft (RKB - 22.5')
<b>Site:</b>	Carlson 15-D Pad Sec.15-T5N-R65W	<b>MD Reference:</b>	WELL @ 4643.5ft (RKB - 22.5')
<b>Well:</b>	Carlson I-15-16HN	<b>North Reference:</b>	True
<b>Wellbore:</b>	Wellbore #1	<b>Survey Calculation Method:</b>	Minimum Curvature
<b>Design:</b>	Wellbore #1	<b>Database:</b>	EDMNEW

Survey									
Measured Depth (ft)	Inclination (°)	Azimuth (°)	Vertical Depth (ft)	+N/-S (ft)	+E/-W (ft)	Vertical Section (ft)	Dogleg Rate (°/100ft)	Build Rate (°/100ft)	Turn Rate (°/100ft)

Design Targets									
Target Name	Dip Angle (°)	Dip Dir. (°)	TVD (ft)	+N/-S (ft)	+E/-W (ft)	Northing (ft)	Easting (ft)	Latitude	Longitude
- hit/miss target									
- Shape									
SHL 1055'FNL, 354'FI	0.00	0.00	1.0	0.0	0.0	1,391,065.25	3,239,157.05	40.403697	-104.641239
- survey hits target center									
- Point									
WP#1 (I-15-16HN)	0.00	0.00	6,858.5	-858.6	-2,547.2	1,390,182.04	3,236,618.39	40.401340	-104.650385
- survey misses target center by 3.4ft at 9538.8ft MD (6861.9 TVD, -859.0 N, -2547.3 E)									
- Point									
WP#3 (I-15-16HN)	0.00	0.00	6,858.5	-819.1	-4,391.3	1,390,203.67	3,234,774.07	40.401448	-104.657006
- survey misses target center by 8.9ft at 11384.4ft MD (6856.1 TVD, -810.5 N, -4391.7 E)									
- Point									
BHL 1900'FNL, 2338'I	0.00	0.00	6,858.5	-888.7	-7,877.3	1,390,100.29	3,231,289.06	40.401254	-104.669522
- survey misses target center by 5.6ft at 14870.0ft MD (6861.9 TVD, -886.1 N, -7873.8 E)									
- Point									
WP#2 (I-15-16HN)	0.00	0.00	6,858.5	-817.4	-4,091.3	1,390,208.28	3,235,074.03	40.401452	-104.655929
- survey misses target center by 5.3ft at 11083.5ft MD (6853.8 TVD, -814.8 N, -4091.2 E)									
- Point									

Checked By: \_\_\_\_\_ Approved By: \_\_\_\_\_ Date: \_\_\_\_\_