

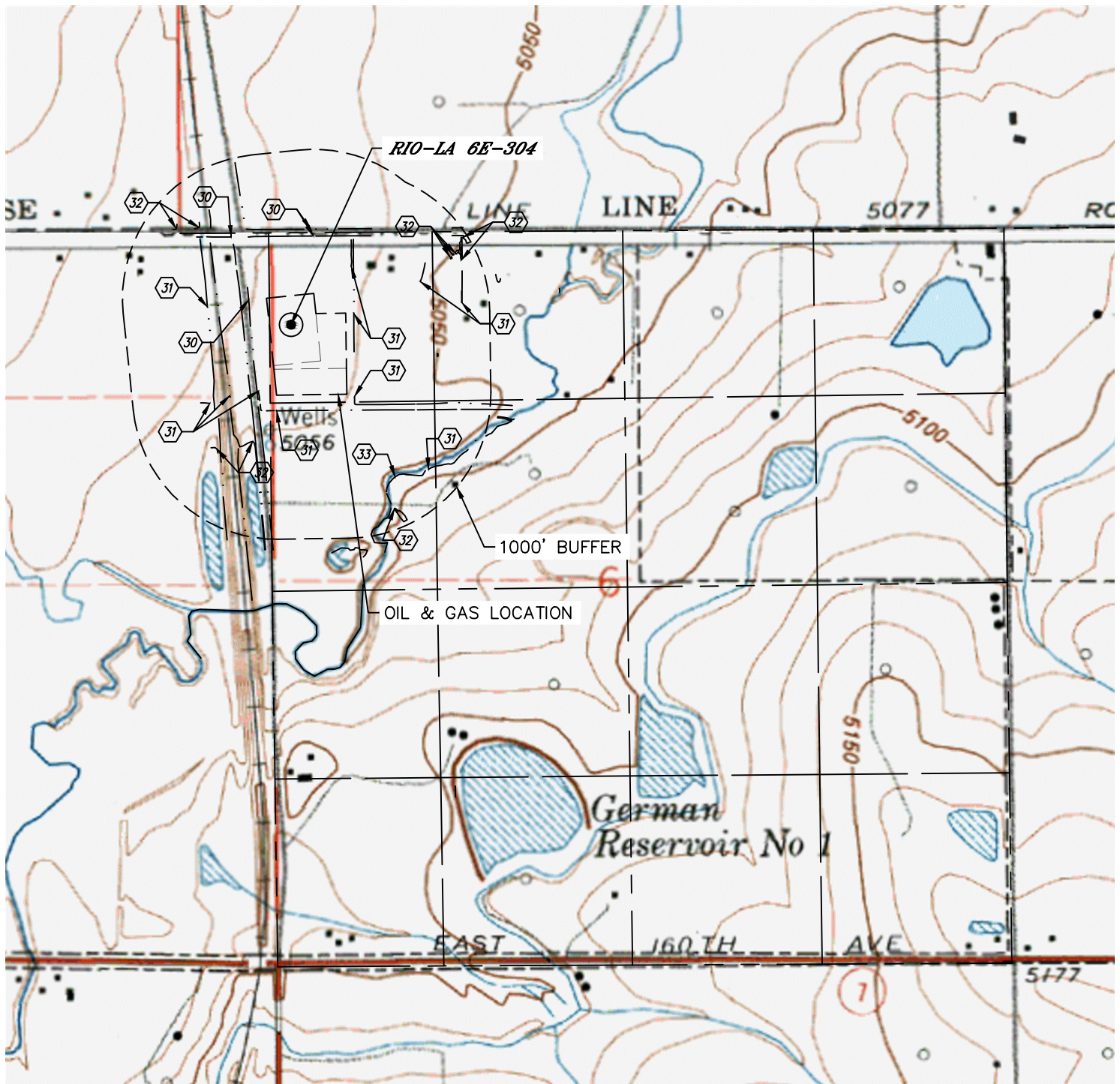


Lat40°, Inc. 6250 W. 10th Street, Unit 2, Greeley, CO 970-515-5294

HYDROLOGY MAP

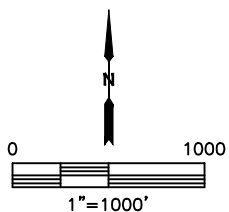
RIO-LA 1S67W6E PAD

SECTION: 6
TOWNSHIP: 1S
RANGE: 67W
6TH. P.M.
ADAMS COUNTY, CO



DISTANCES MEASURED FROM THE EDGE OF OIL AND GAS LOCATION

- ③① BARROW DITCH 125' & 179' SW, 398' & 446' N, 491' NW
- ③① DITCH 54' E, 56' & 770' SE, 108' S, 122', 325', 414' & 466' SW, 320', 561' & 808' NE
- ③② LOW AREA 361' & 557' SW, 680' & 792' NW, 818', 843', 865', 883' & 966' NE, 859' SE
- ③③ CANAL 665' SE



NEAREST DOWN GRADIENT SURFACE WATER: DITCH 54' E

DATE: 6/16/2015
PROJECT#: 2014158