



WELL : CARLSON H-15-16HC

FIELD : WATTENBERG

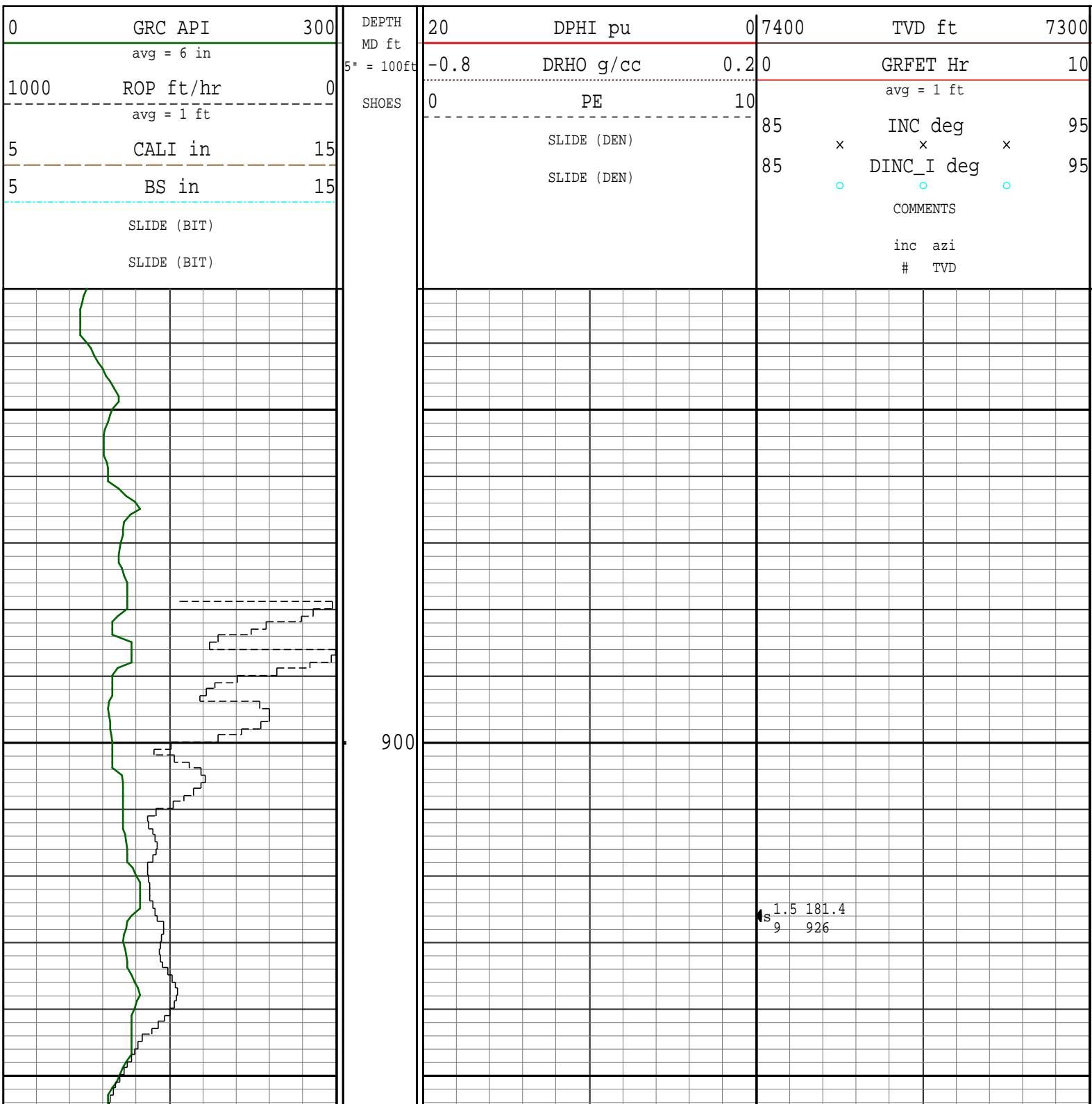
REMARKS:

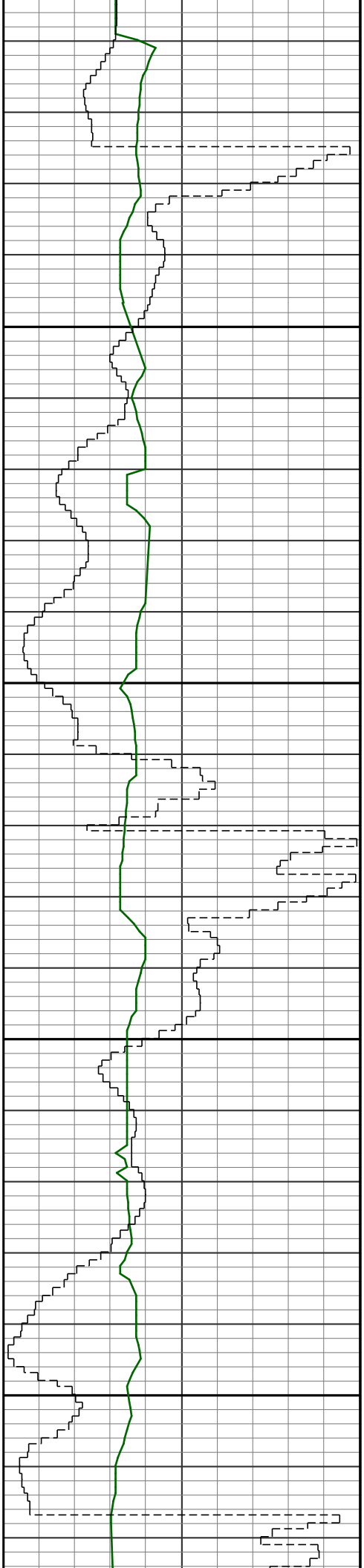
NOTICE - All interpretations are opinions based on inferences from electrical or other measurements and we do not guarantee the accuracy or correctness of any interpretations. We shall not, except in the case of gross or wilful negligence on our part, be liable or responsible for loss, costs, damages or expenses incurred or sustained by anyone as a result of any interpretations made by one of our officers, agents or employees. These interpretations are also subject to our General Terms and Conditions as set out in our current Price Schedule.

PATHFINDER - A Schlumberger Company

Version No : RX5 V7.01A Release 24Jul2015

Plot Time : 07-Sep-2015 20:11



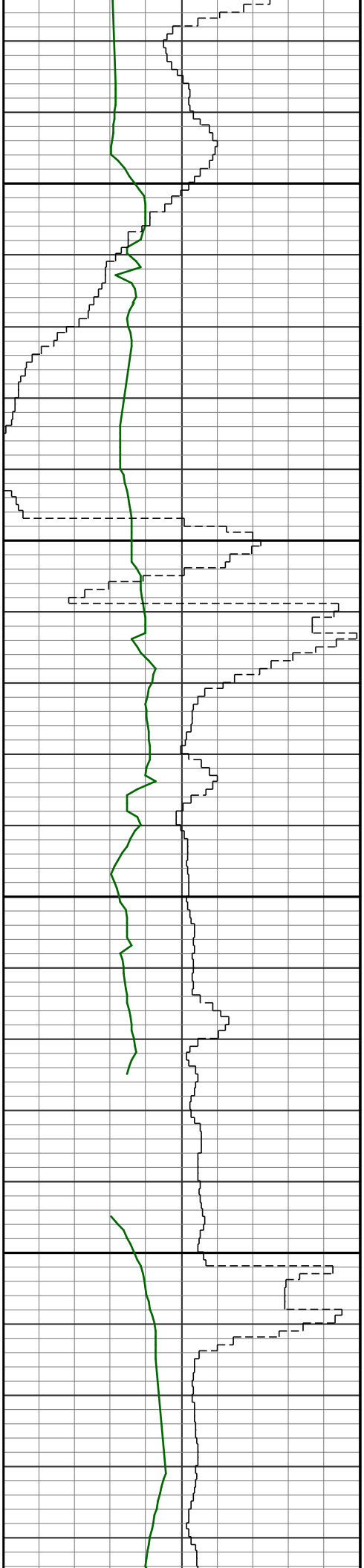


1000

1.8 178.1
10 1021

1100

2.6 177.0
11 1116



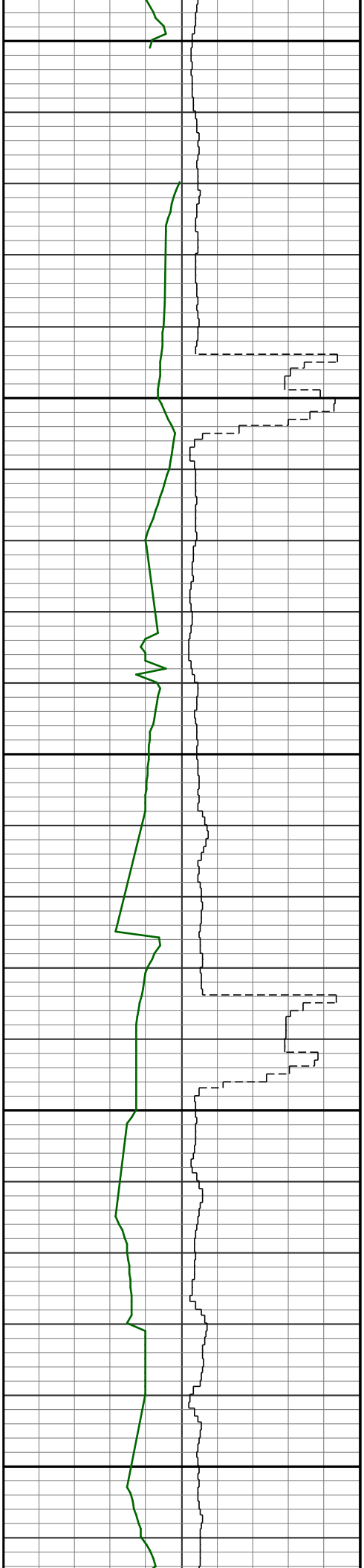
1200

3.3 162.6
12 1208

1300

4.4 155.0
13 1300

5.4 158.7
14 1400



1400

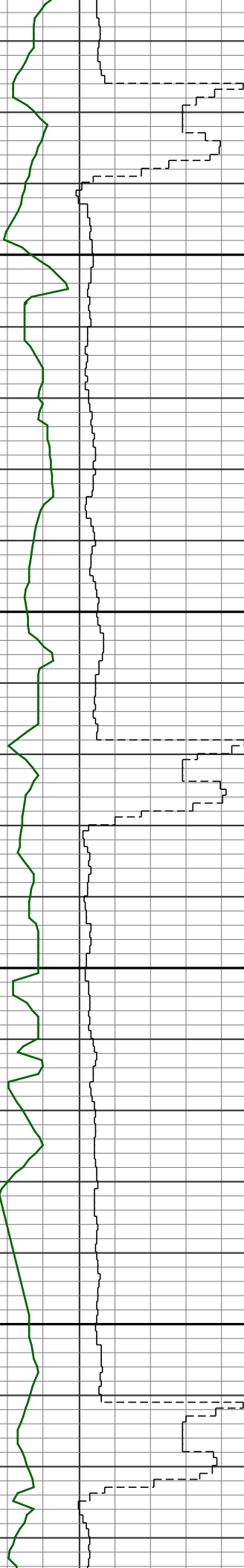
1500

1600

14 1392

6.7 159.4
15 1484

7.8 156.6
16 1575



1700

1800

8.9 157.1
17 1666

9.5 148.9
18 1757



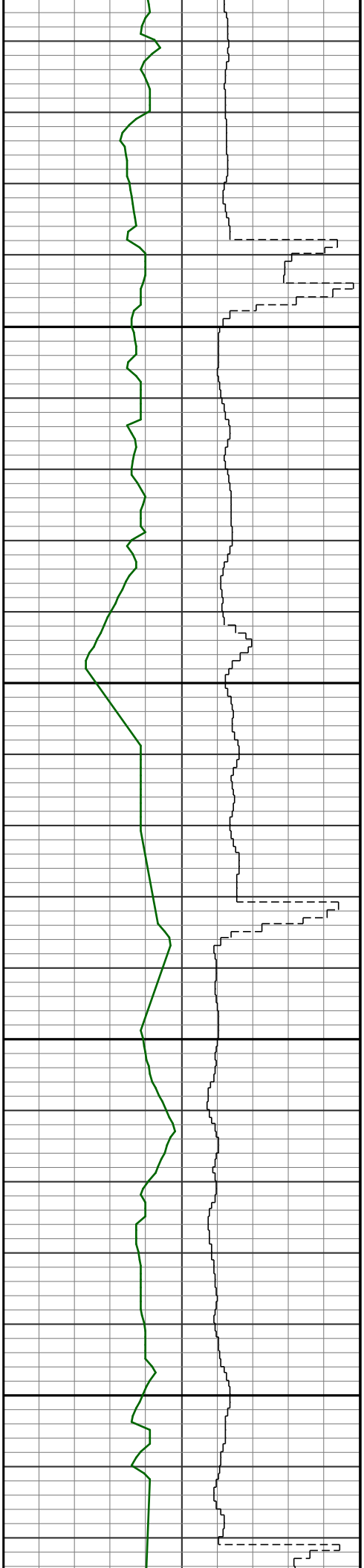
1900

2000

8.4 154.7
19 1849

8.8 156.1
20 1939

8.4 153.3
21 2031

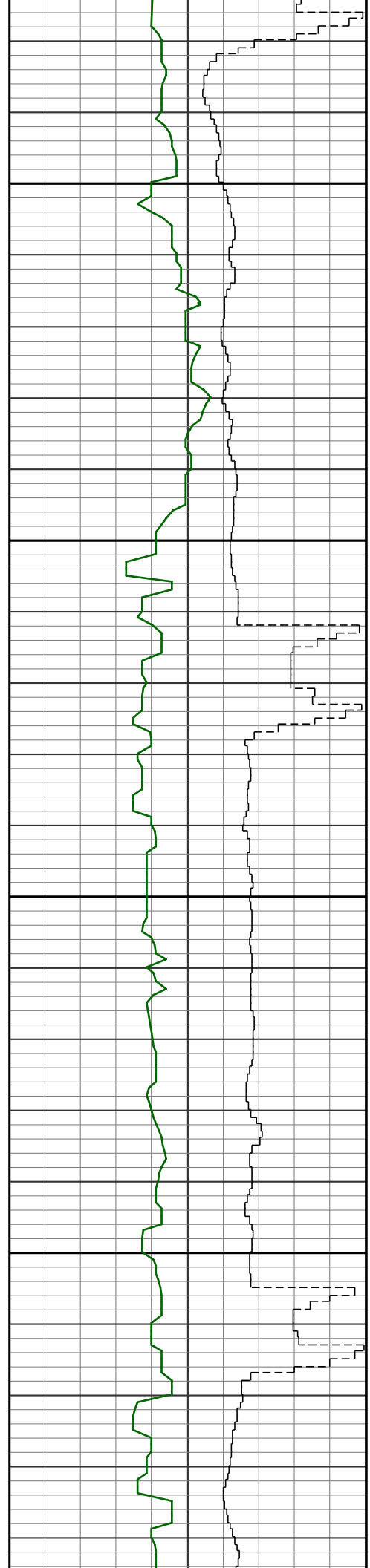


2100

8.5 154.0
22 2122

2200

8.3 154.3
23 2213

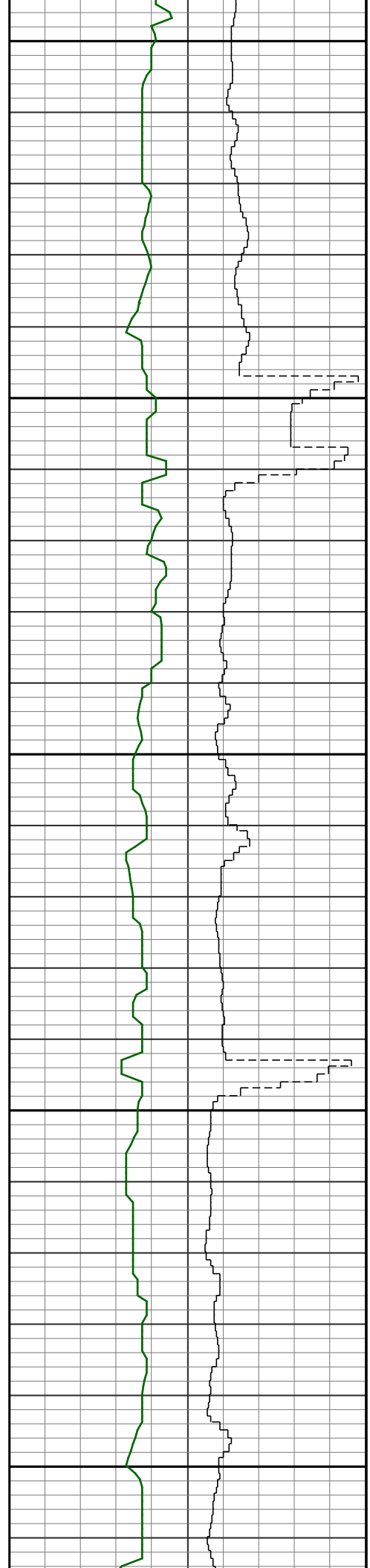


2300

8.1 158.4
24 2304

2400

8.5 148.5
25 2395



2500

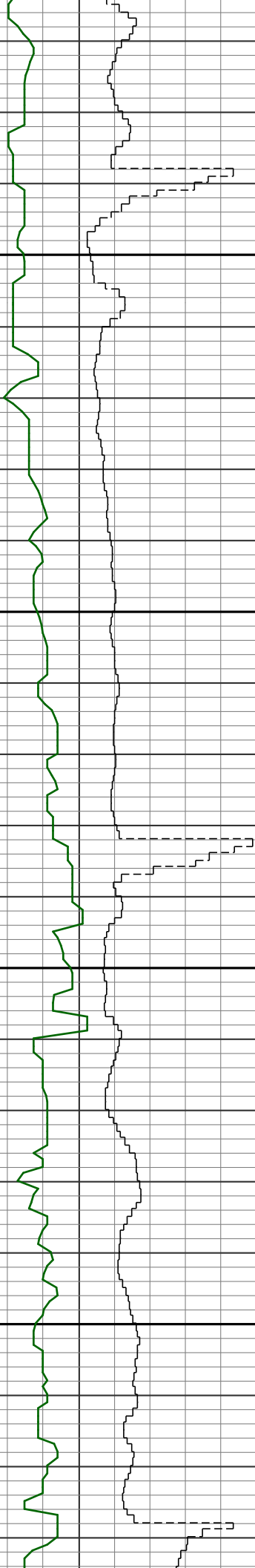
2600

2700

8.4 150.1
26 2486

9.0 154.9
27 2580

9.6 154.5
28 2674

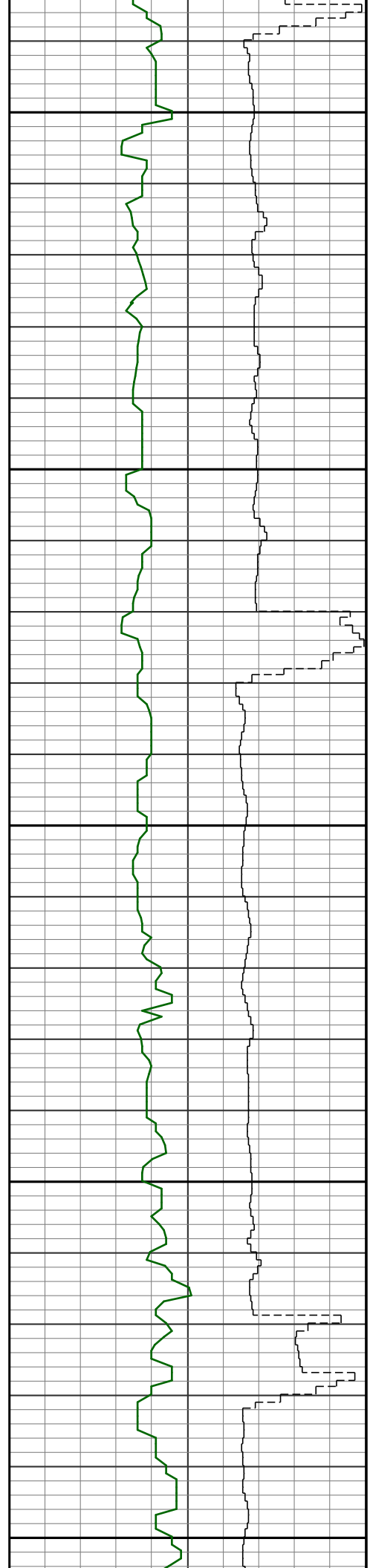


2800

9.7 155.2
29 2768

2900

8.9 149.1
30 2862

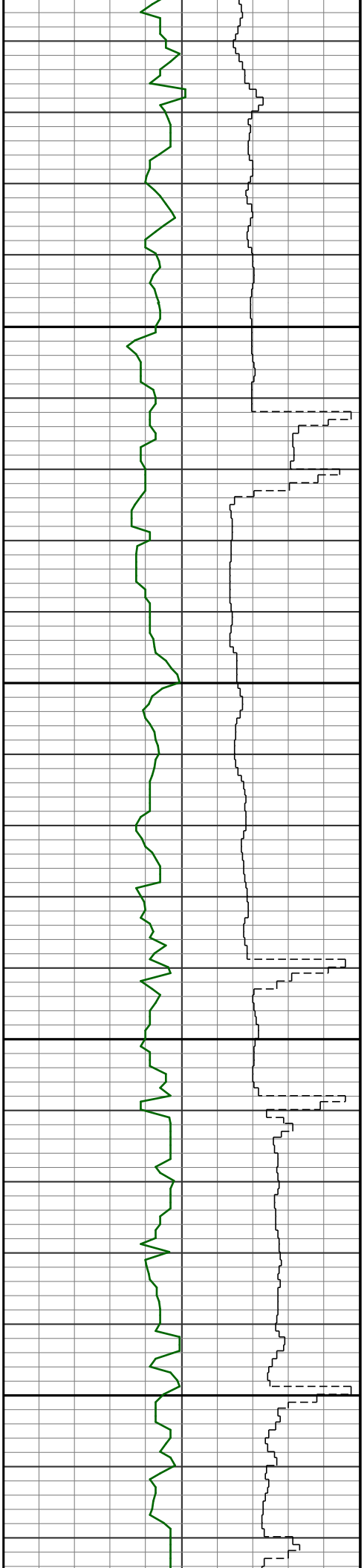


3000

3100

9.9 149.6
31 2955

9.6 148.2
32 3050



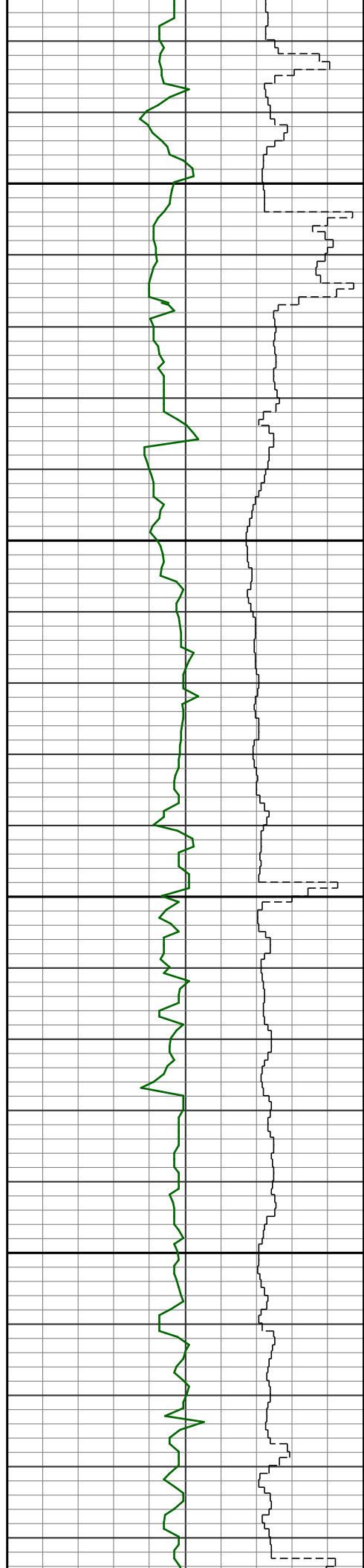
3200

3300

8.7 152.2
33 3144

8.0 157.8
34 3238

7.7 152.9
35 3332

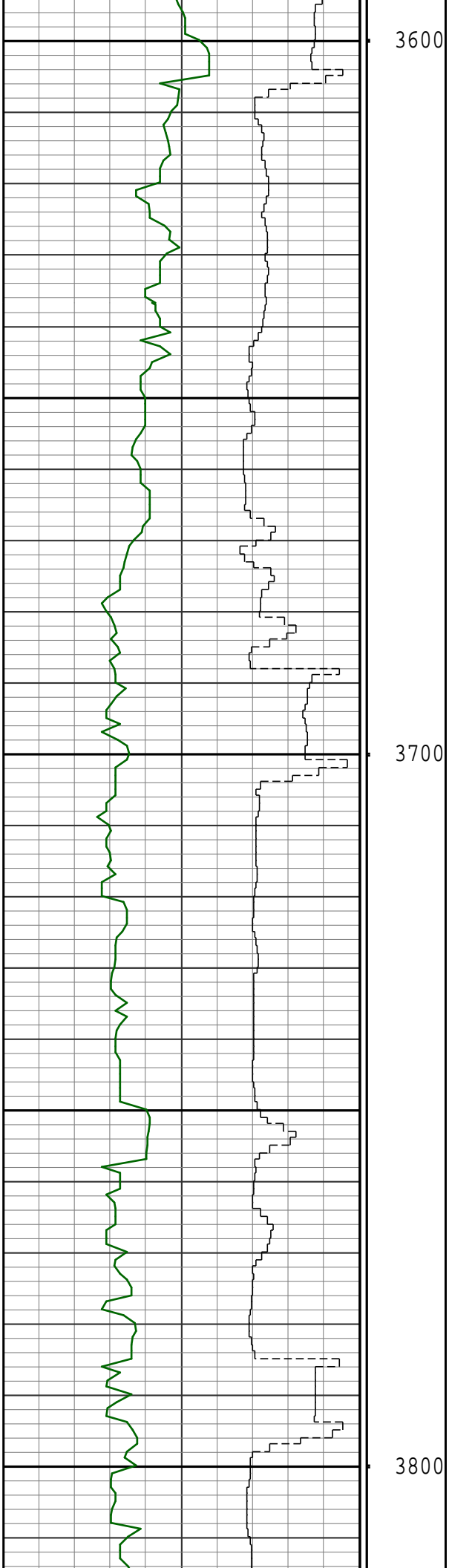


3400

7.8 155.0
s 36 3427

3500

7.3 147.3
s 37 3521



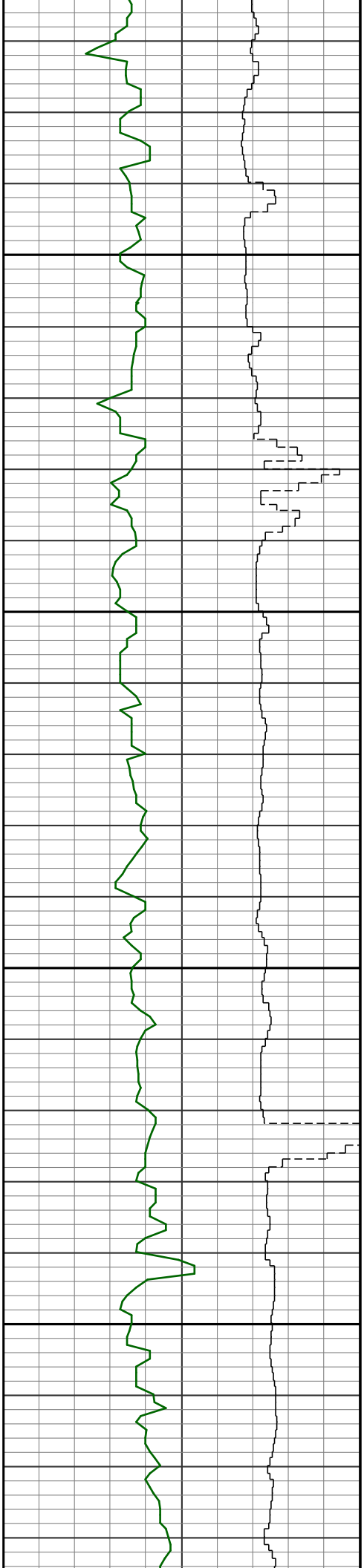
3600

3700

3800

7.1 163.5
s 38 3616

7.7 167.0
s 39 3710



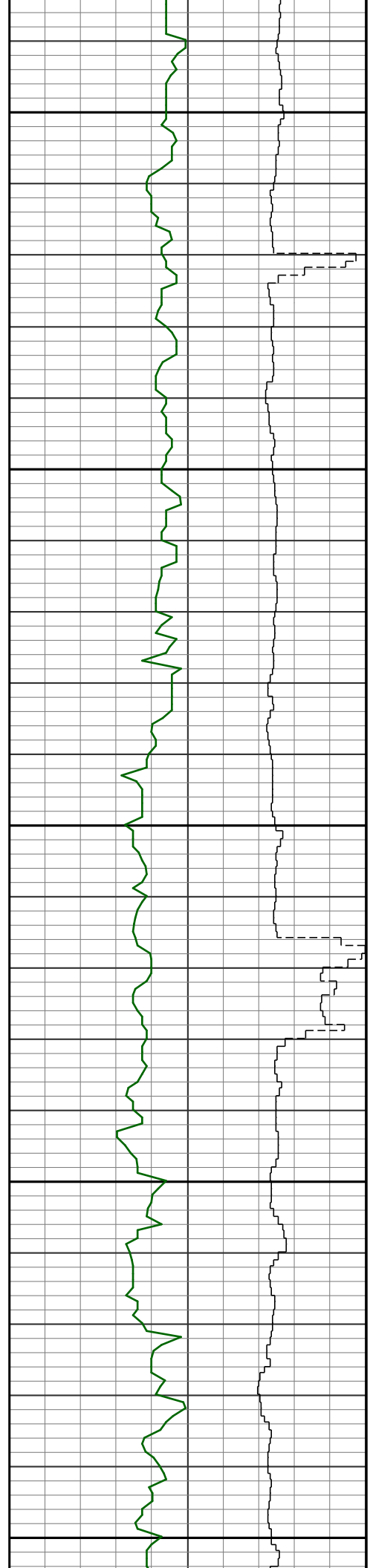
3900

4000

9.1 165.2
s 40 3804

9.4 165.4
s 41 3897

8.7 164.2
s 42 3992

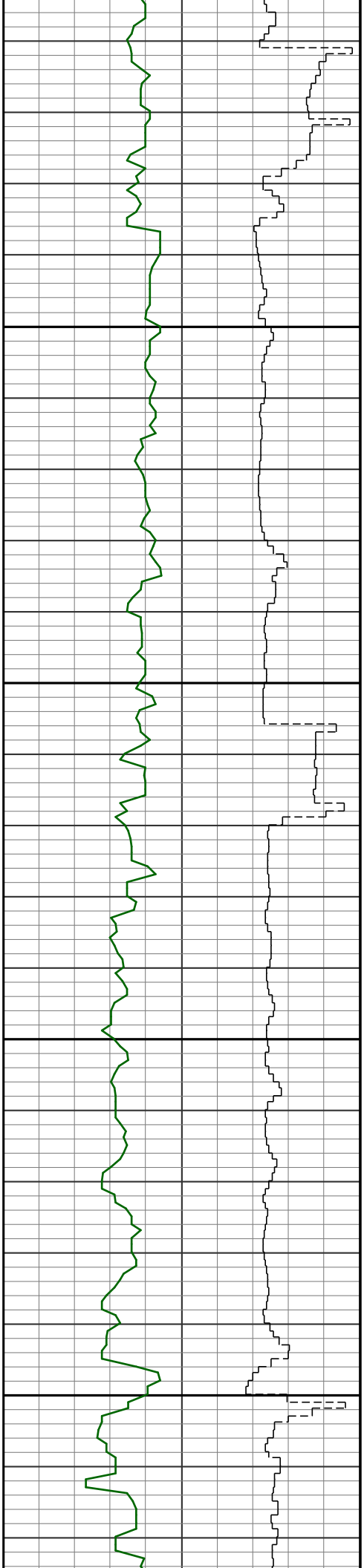


4100

7.7 160.5
s 43 4086

4200

8.5 155.7
s 44 4180

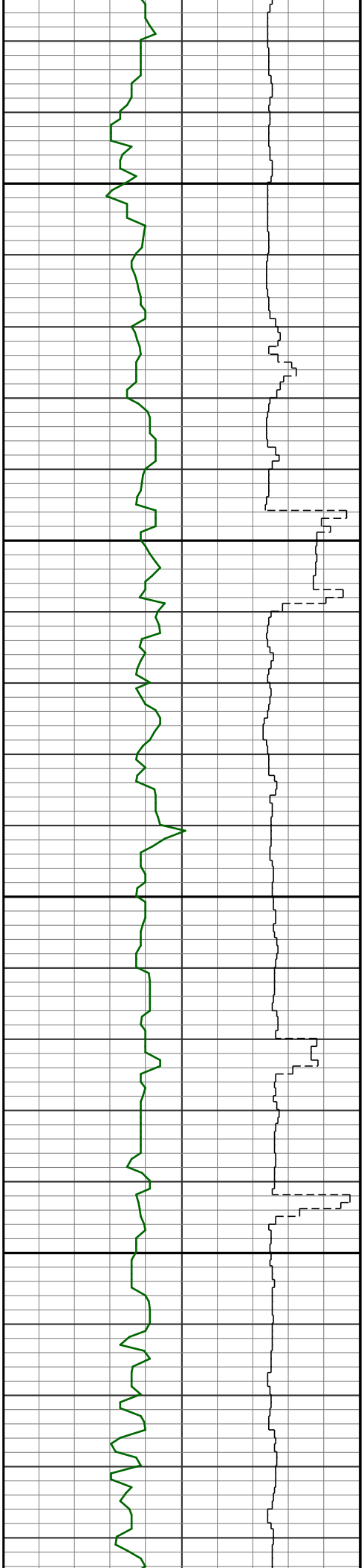


4300

8.0 156.4
45 4274

4400

9.5 158.9
46 4368



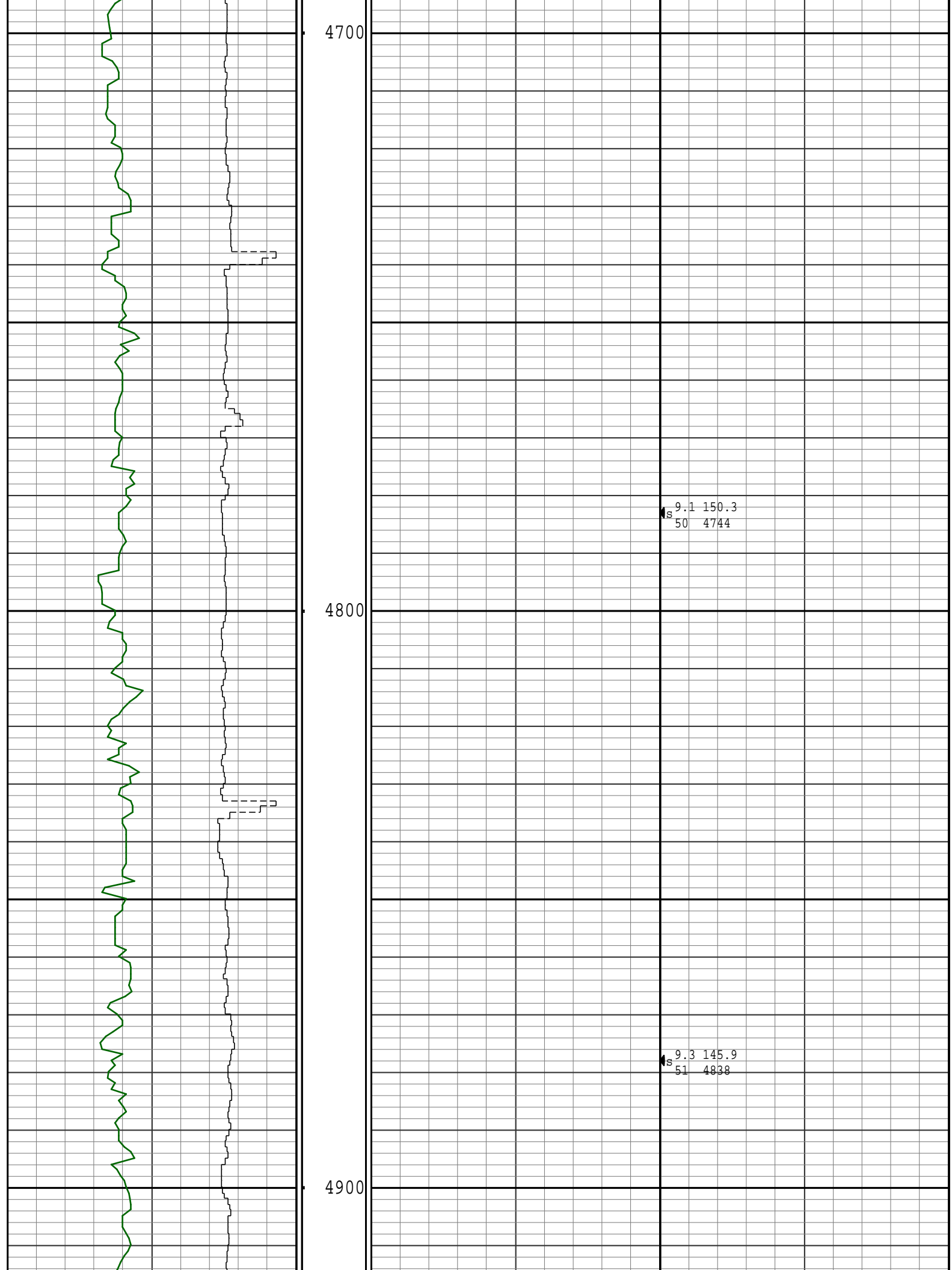
4500

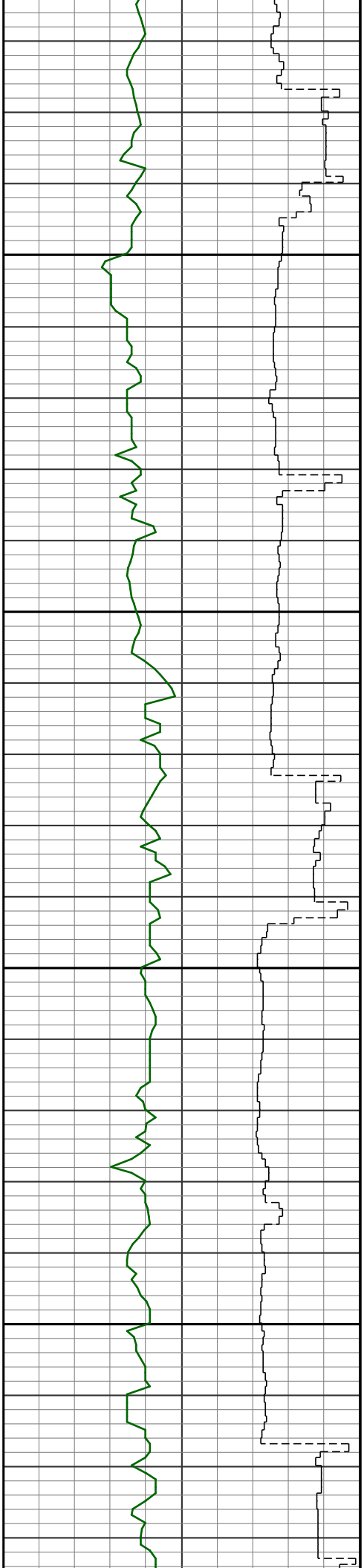
8.9 156.6
47 4463

4600

9.9 156.6
48 4557

9.1 152.2
49 4650



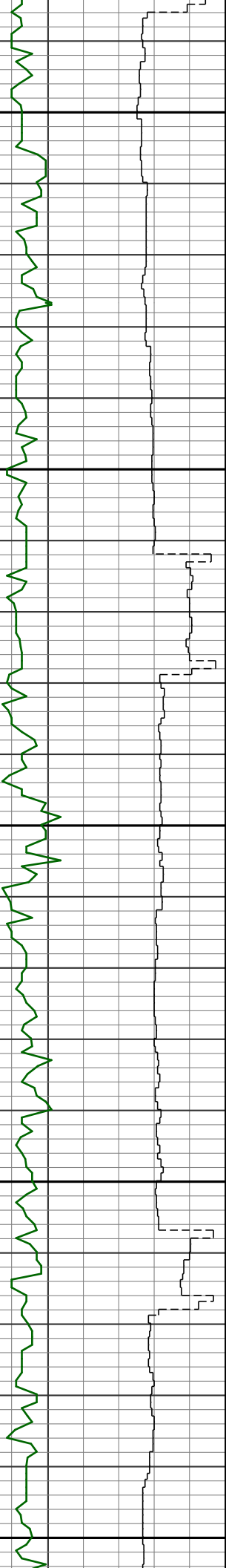


5000

5100

9.5 150.3
52 4932

8.3 155.2
53 5026



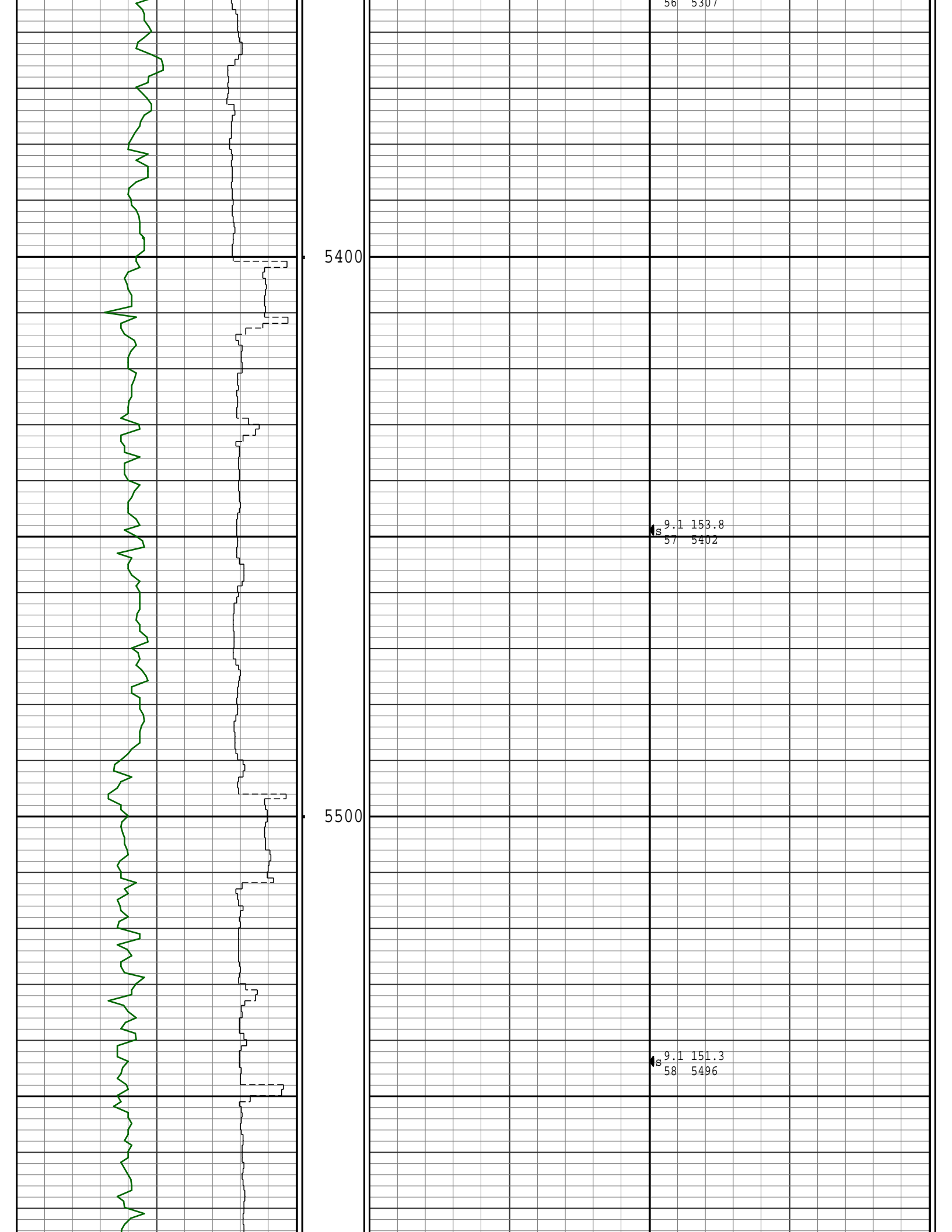
5200

5300

8.4 157.1
54 5120

9.4 153.3
55 5213

9.2 153.3
56 5307



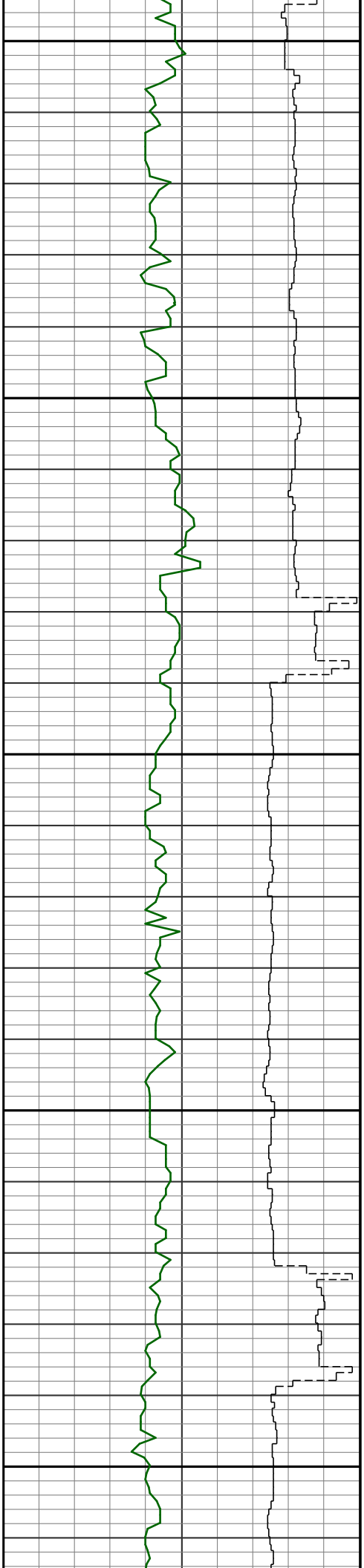


5600

9.3 150.5
59 5590

5700

7.7 149.4
60 5684



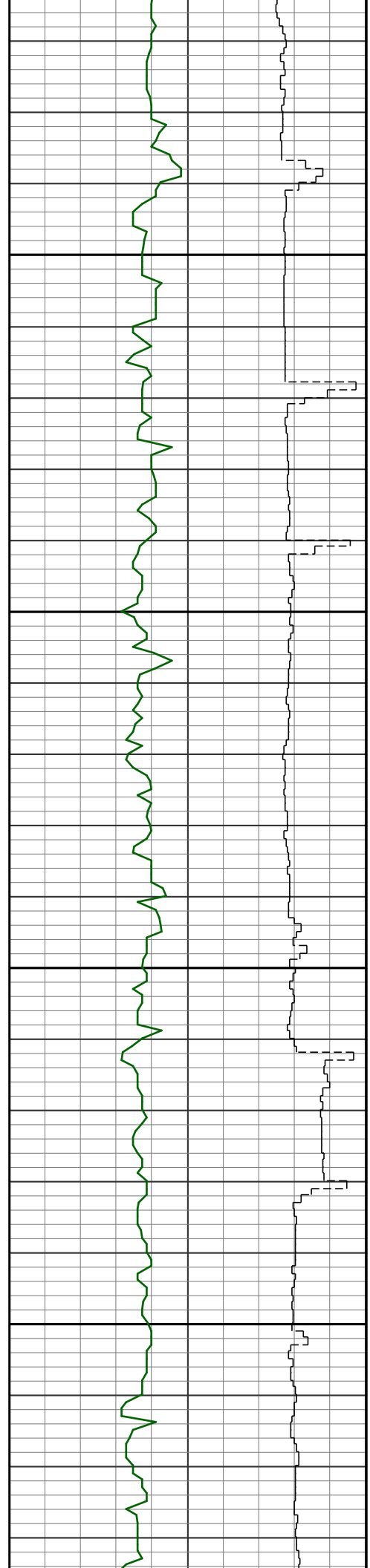
5800

6.0 145.9
61 5778

5900

4.6 145.5
62 5873

6000



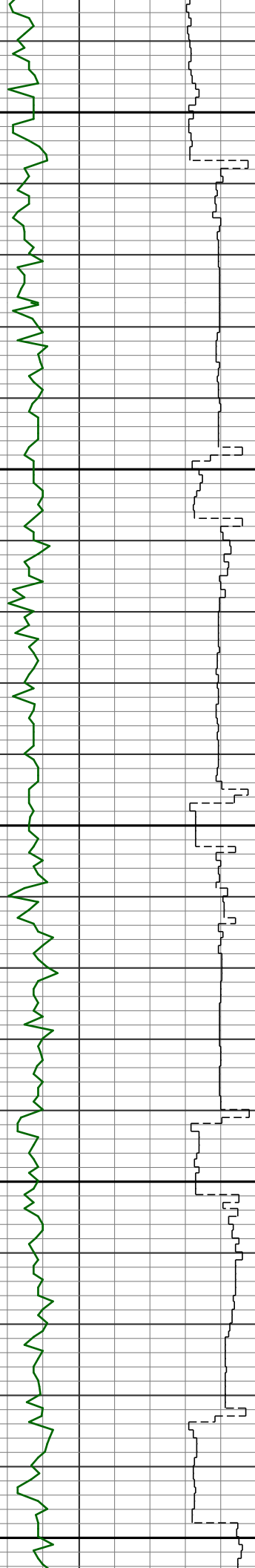
6100

6200

2.2 155.4
63 5968

1.9 164.7
64 6063

0.1 240.1
65 6158



6300

6400

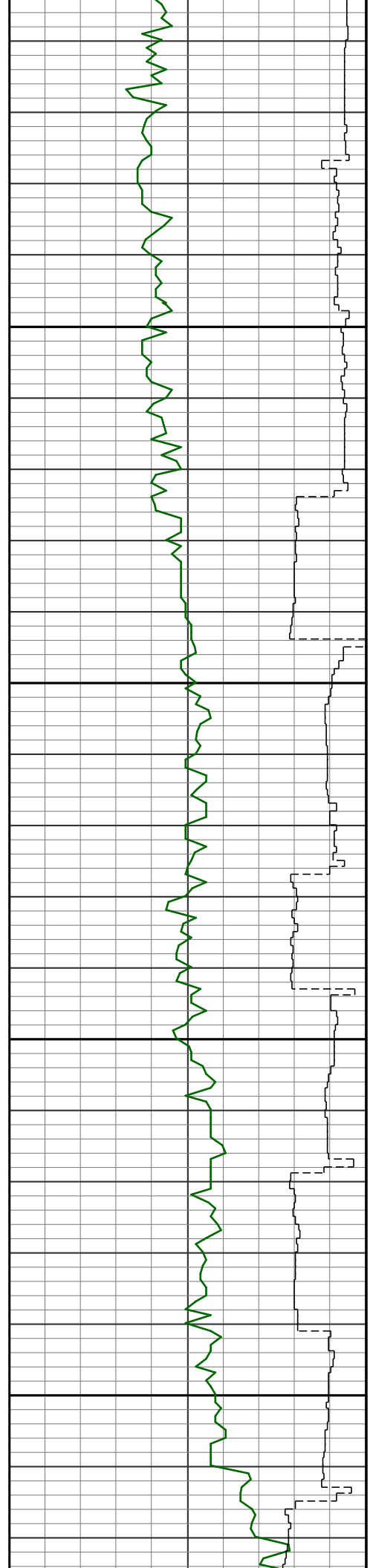
S 0.6 290.9
66 6205

S 5.2 285.1
67 6253

S 10.8 280.9
68 6300

S 13.5 271.9
69 6348

S 17.9 271.2
70 6393



6500

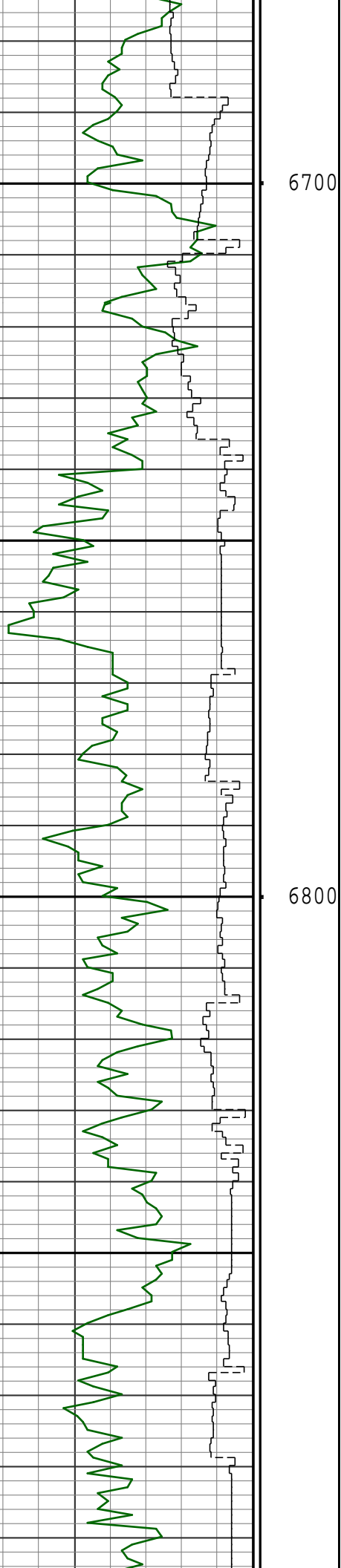
6600

21.0 272.8
71 6438

24.0 275.1
72 6481

27.4 271.2
73 6525

30.6 269.8
74 6566



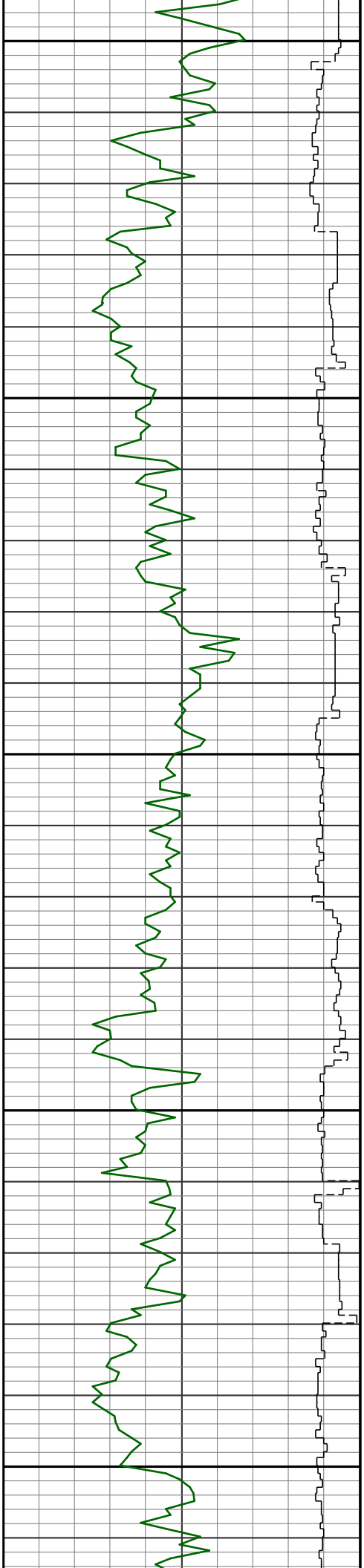
32.9 271.4
75 6607

34.6 272.8
76 6647

38.3 271.4
77 6685

42.9 270.9
78 6721

47.7 268.6
79 6755



6900

51.3 267.9
80 6785

54.6 268.9
81 6814

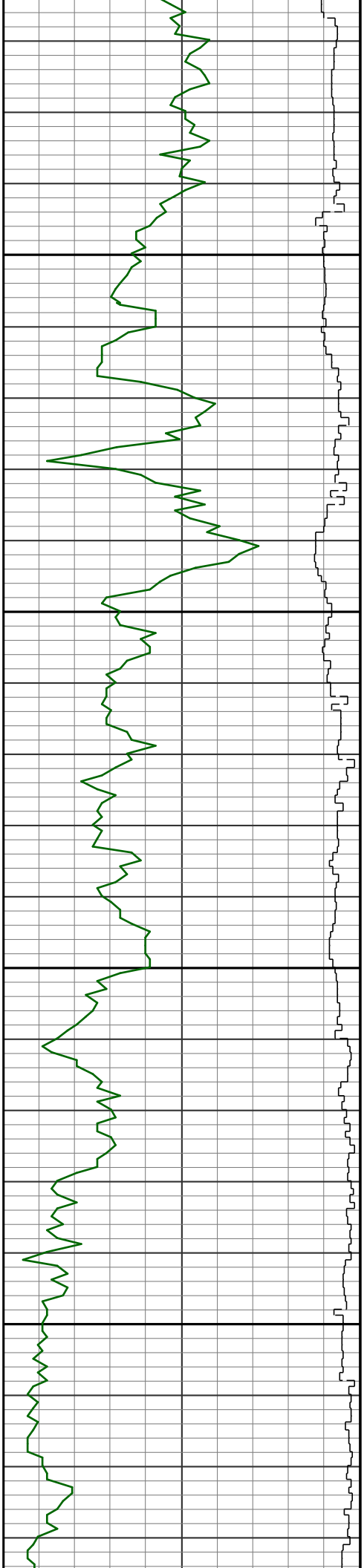
7000

58.2 269.8
82 6840

61.6 270.3
83 6864

7100

64.1 269.6



7200

7300

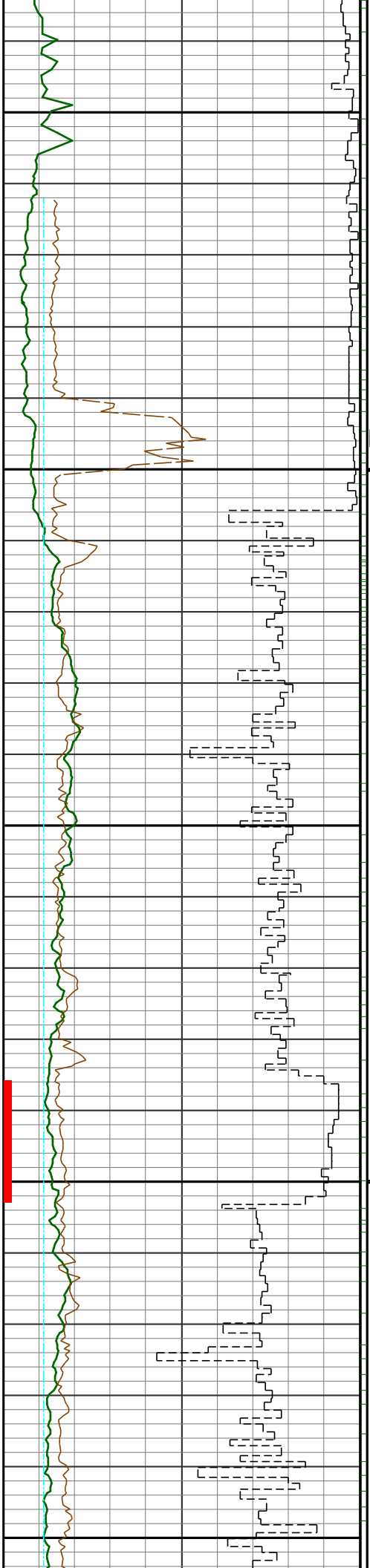
84 6886

69.4 270.3
85 6904

72.7 270.5
86 6920

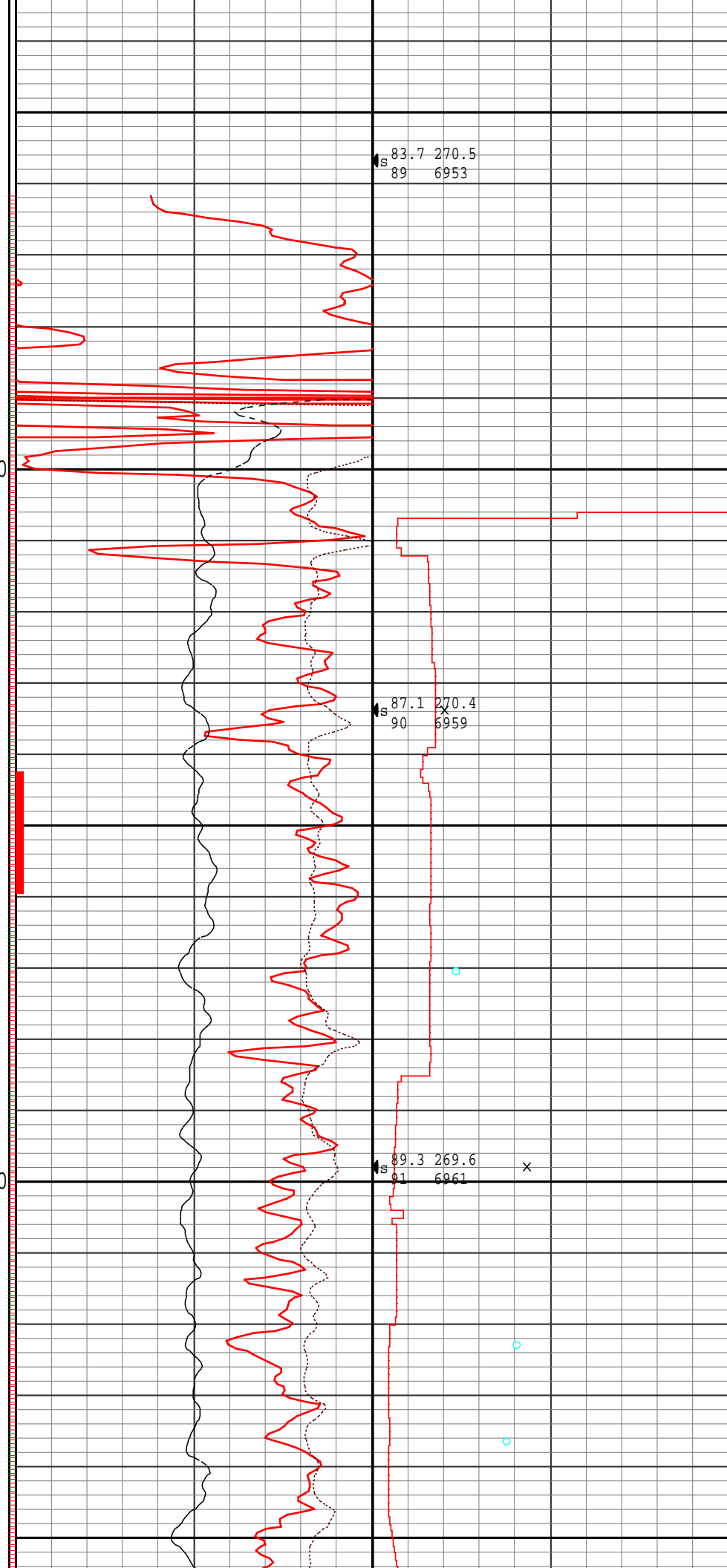
73.9 270.7
87 6934

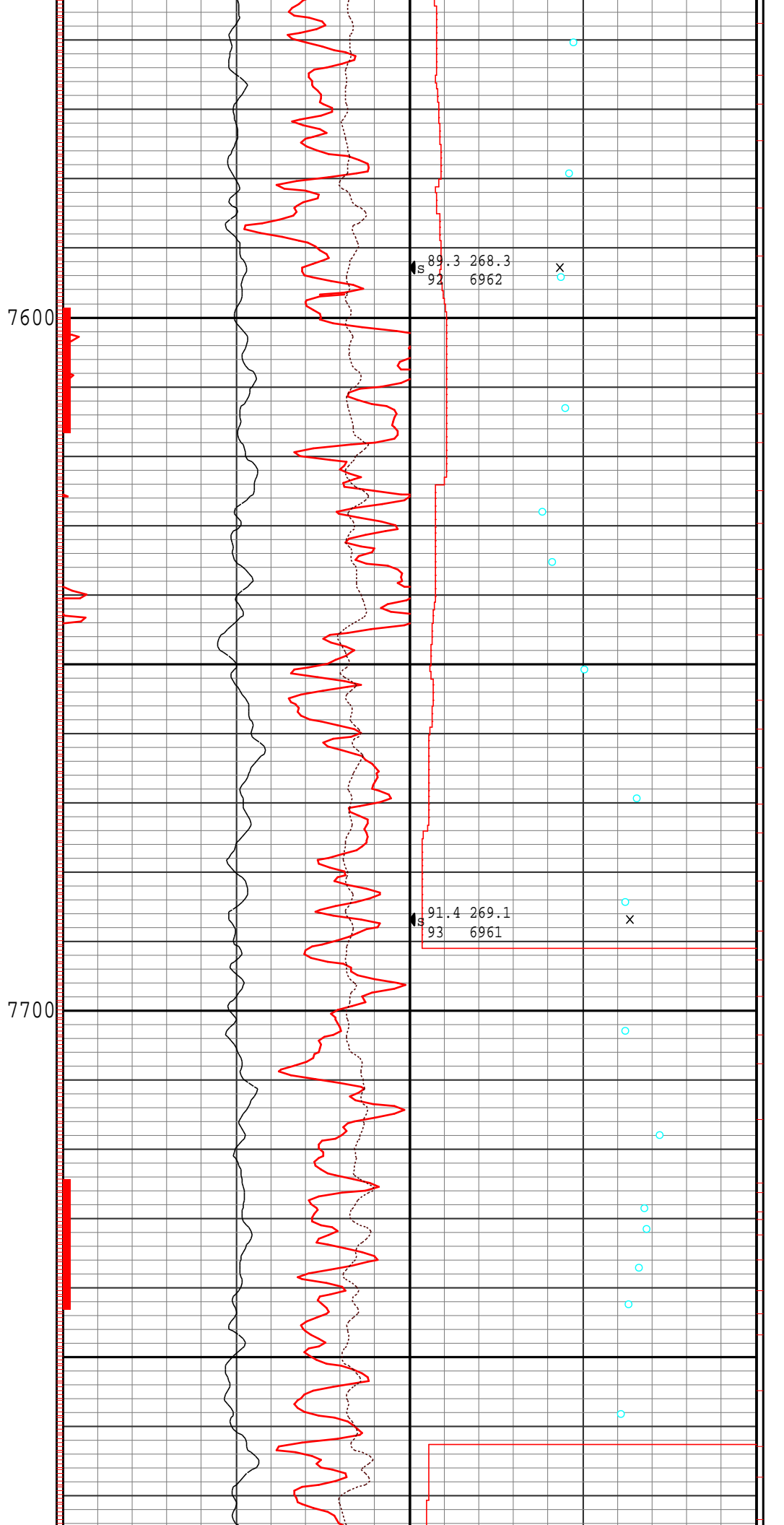
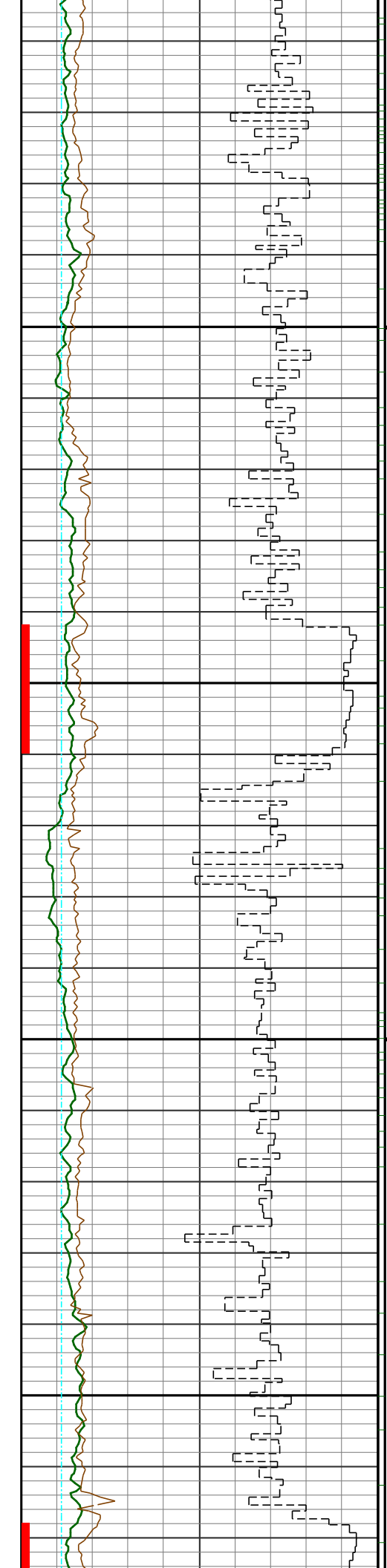
78.8 270.3
88 6945

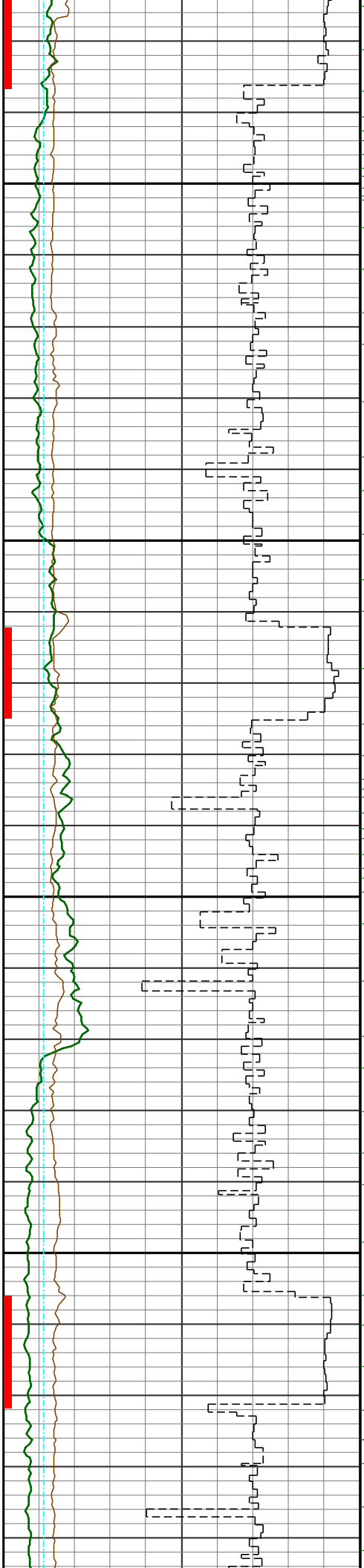


7400

7500







7800

7900

