

Bayswater Exploration & Production, LLC

Well Name: **Carlson F-15-16HN**

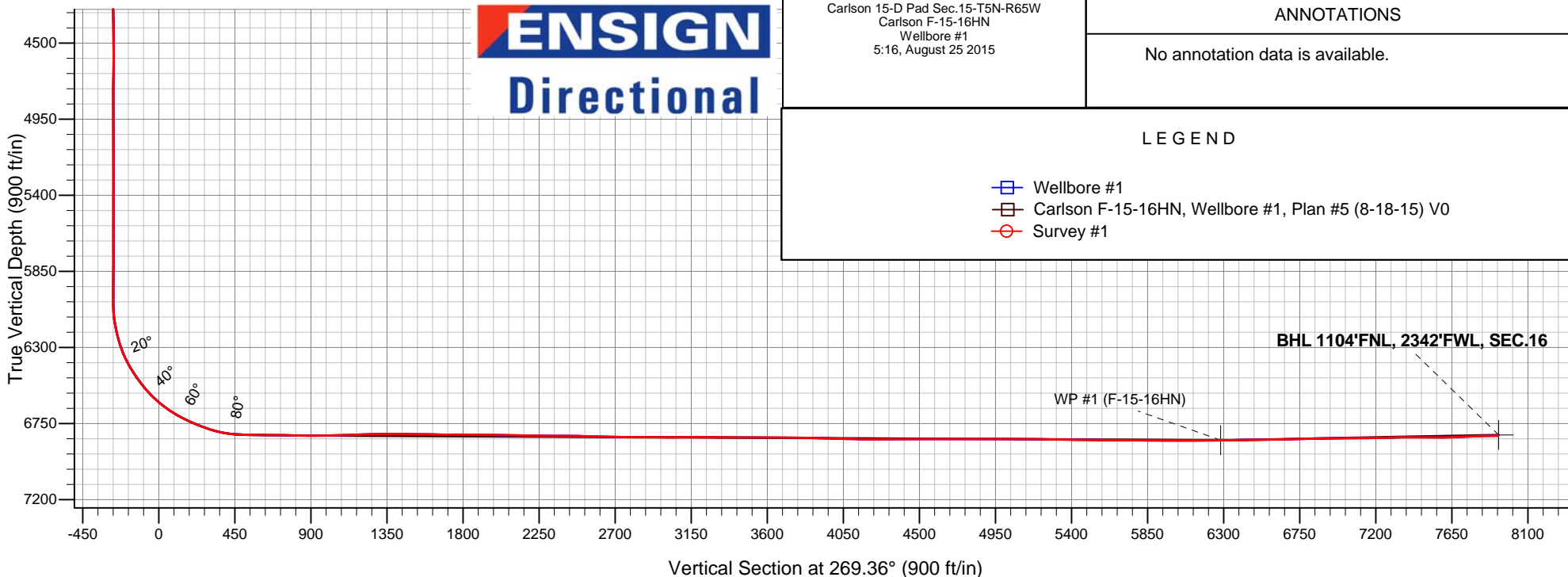
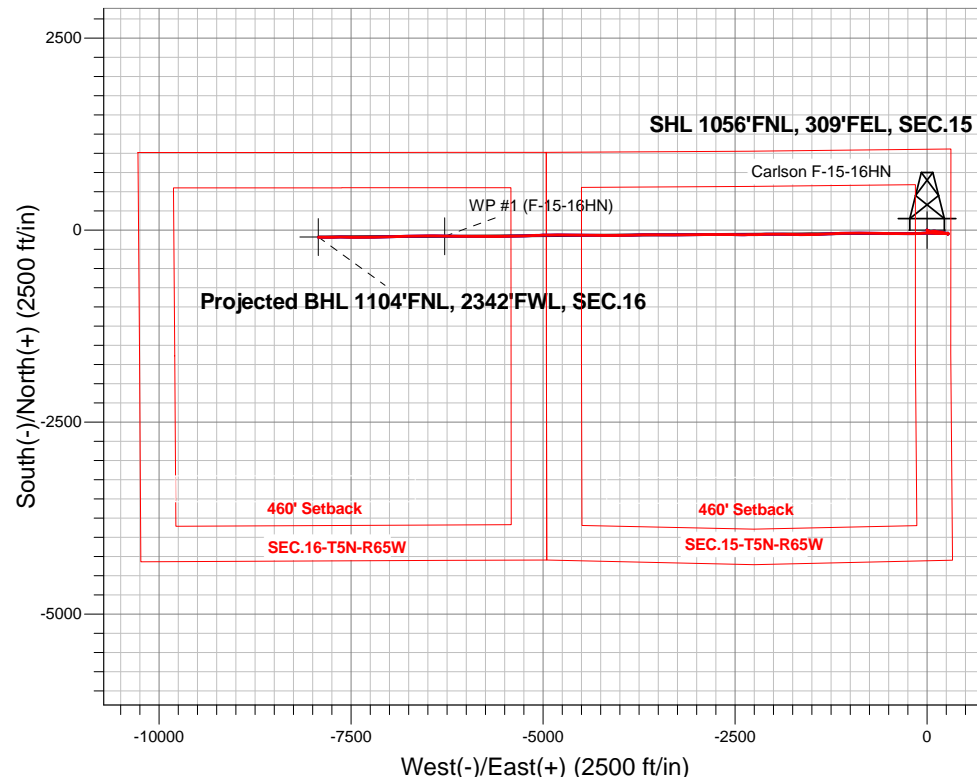
Surface Location: Carlson 15-D Pad Sec.15-T5N-R65W
North American Datum 1983 , US State Plane 1983 , Colorado Northern Zone

Ground Elevation: 4621.0

+N/-S	+E/-W	Northing	Easting	Latitude	Longitude	Slot
0.0	0.0	1391065.31	3239202.17	40.403696	-104.641077	
RKB - 22.5' WELL @ 4643.5ft (RKB - 22.5')						

FINAL SURVEY

Projected Bottom Hole Location
14691'MD 6822'TVD 93'S & 7924'W of SHL
91.2 degree Incl @ 269.1 degree AZM





Bayswater Exploration & Production, LLC

SEC.15-T5N-R65W

Carlson 15-D Pad Sec.15-T5N-R65W

Carlson F-15-16HN

Wellbore #1

Survey: Survey #1

Standard Survey Report

25 August, 2015



BAYSWATER
EXPLORATION & PRODUCTION, LLC

Company:	Bayswater Exploration & Production, LLC	Local Co-ordinate Reference:	Well Carlson F-15-16HN
Project:	SEC.15-T5N-R65W	TVD Reference:	WELL @ 4643.5ft (RKB - 22.5')
Site:	Carlson 15-D Pad Sec.15-T5N-R65W	MD Reference:	WELL @ 4643.5ft (RKB - 22.5')
Well:	Carlson F-15-16HN	North Reference:	True
Wellbore:	Wellbore #1	Survey Calculation Method:	Minimum Curvature
Design:	Wellbore #1	Database:	EDMNEW

Project	SEC.15-T5N-R65W, Weld County, Colorado		
Map System:	US State Plane 1983	System Datum:	Mean Sea Level
Geo Datum:	North American Datum 1983		Using Well Reference Point
Map Zone:	Colorado Northern Zone		Using geodetic scale factor

Site	Carlson 15-D Pad Sec.15-T5N-R65W		
Site Position:		Northing:	1,391,065.32 ft
From:	Lat/Long	Easting:	3,239,277.09 ft
Position Uncertainty:	0.0 ft	Slot Radius:	"
		Latitude:	40.403694
		Longitude:	-104.640808
		Grid Convergence:	0.56 °

Well	Carlson F-15-16HN		
Well Position	+N/-S	0.0 ft	Northing:
	+E/-W	0.0 ft	Easting:
Position Uncertainty	0.0 ft	Wellhead Elevation:	ft
		Latitude:	40.403696
		Longitude:	-104.641077
		Ground Level:	4,621.0 ft

Wellbore	Wellbore #1		
Magnetics	Model Name	Sample Date	Declination (°)
	IGRF2010	7/1/2015	8.25
			Dip Angle (°)
			66.93
			Field Strength (nT)
			52,722

Design	Wellbore #1		
Audit Notes:			
Version:	1.0	Phase:	ACTUAL
		Tie On Depth:	0.0
Vertical Section:	Depth From (TVD) (ft)	+N/-S (ft)	+E/-W (ft)
	0.0	0.0	0.0
			Direction (°)
			269.36

Survey Program	Date	8/25/2015		
From (ft)	To (ft)	Survey (Wellbore)	Tool Name	Description
160.0	14,691.0	Survey #1 (Wellbore #1)	MWD	MWD - Standard

Survey										
Measured Depth (ft)	Inclination (°)	Azimuth (°)	Vertical Depth (ft)	+N/-S (ft)	+E/-W (ft)	Vertical Section (ft)	Dogleg Rate (°/100ft)	Build Rate (°/100ft)	Turn Rate (°/100ft)	
0.0	0.00	0.00	0.0	0.0	0.0	0.0	0.00	0.00	0.00	
1.0	0.01	332.60	1.0	0.0	0.0	0.0	0.50	0.50	0.00	
SHL 1056'FNL, 309'FEL, SEC.15										
160.0	0.80	332.60	160.0	1.0	-0.5	0.5	0.50	0.50	0.00	
253.0	0.80	349.30	253.0	2.2	-0.9	0.9	0.25	0.00	17.96	
345.0	0.40	332.90	345.0	3.1	-1.2	1.2	0.47	-0.43	-17.83	
437.0	0.70	333.50	437.0	3.9	-1.6	1.6	0.33	0.33	0.65	
529.0	0.40	259.10	529.0	4.4	-2.2	2.1	0.77	-0.33	-80.87	
621.0	0.40	141.20	621.0	4.0	-2.3	2.2	0.74	0.00	-128.15	
713.0	0.80	158.00	713.0	3.2	-1.8	1.8	0.47	0.43	18.26	
800.0	0.70	153.80	800.0	2.2	-1.4	1.3	0.13	-0.11	-4.83	
924.0	0.70	177.90	924.0	0.7	-1.0	1.0	0.24	0.00	19.44	
1,019.0	0.80	182.10	1,018.9	-0.5	-1.0	1.0	0.12	0.11	4.42	

Company:	Bayswater Exploration & Production, LLC	Local Co-ordinate Reference:	Well Carlson F-15-16HN
Project:	SEC.15-T5N-R65W	TVD Reference:	WELL @ 4643.5ft (RKB - 22.5')
Site:	Carlson 15-D Pad Sec.15-T5N-R65W	MD Reference:	WELL @ 4643.5ft (RKB - 22.5')
Well:	Carlson F-15-16HN	North Reference:	True
Wellbore:	Wellbore #1	Survey Calculation Method:	Minimum Curvature
Design:	Wellbore #1	Database:	EDMNEW

Survey

Measured Depth (ft)	Inclination (°)	Azimuth (°)	Vertical Depth (ft)	+N/-S (ft)	+E/-W (ft)	Vertical Section (ft)	Dogleg Rate (°/100ft)	Build Rate (°/100ft)	Turn Rate (°/100ft)
1,114.0	0.80	175.20	1,113.9	-1.8	-1.0	1.0	0.10	0.00	-7.26
1,207.0	2.70	121.80	1,206.9	-3.6	0.9	-0.9	2.49	2.04	-57.42
1,299.0	4.00	104.10	1,298.7	-5.6	5.9	-5.8	1.79	1.41	-19.24
1,391.0	3.50	105.30	1,390.5	-7.1	11.7	-11.6	0.55	-0.54	1.30
1,483.0	5.00	118.10	1,482.3	-9.7	18.0	-17.8	1.92	1.63	13.91
1,575.0	7.20	112.00	1,573.8	-13.8	26.8	-26.7	2.49	2.39	-6.63
1,667.0	6.50	107.90	1,665.1	-17.5	37.1	-36.9	0.93	-0.76	-4.46
1,760.0	8.50	93.30	1,757.3	-19.5	49.0	-48.8	2.95	2.15	-15.70
1,852.0	9.10	77.50	1,848.2	-18.4	62.9	-62.7	2.70	0.65	-17.17
1,944.0	6.00	70.70	1,939.4	-15.2	74.5	-74.4	3.50	-3.37	-7.39
2,036.0	6.30	90.90	2,030.9	-13.7	84.1	-84.0	2.36	0.33	21.96
2,128.0	6.40	89.10	2,122.3	-13.7	94.3	-94.2	0.24	0.11	-1.96
2,220.0	6.20	103.00	2,213.8	-14.7	104.3	-104.1	1.67	-0.22	15.11
2,312.0	5.80	98.60	2,305.3	-16.5	113.7	-113.5	0.66	-0.43	-4.78
2,403.0	4.90	90.20	2,395.9	-17.2	122.1	-121.9	1.31	-0.99	-9.23
2,496.0	6.20	96.00	2,488.5	-17.8	131.1	-130.9	1.52	1.40	6.24
2,592.0	5.90	90.50	2,583.9	-18.4	141.2	-141.0	0.68	-0.31	-5.73
2,687.0	6.20	98.80	2,678.4	-19.2	151.2	-150.9	0.97	0.32	8.74
2,782.0	6.60	106.00	2,772.8	-21.5	161.5	-161.2	0.94	0.42	7.58
2,877.0	6.50	100.70	2,867.2	-24.0	172.0	-171.7	0.64	-0.11	-5.58
2,973.0	6.20	96.10	2,962.6	-25.5	182.5	-182.2	0.61	-0.31	-4.79
3,068.0	6.20	99.10	3,057.0	-26.9	192.7	-192.4	0.34	0.00	3.16
3,163.0	6.30	100.90	3,151.5	-28.7	202.9	-202.5	0.23	0.11	1.89
3,258.0	6.30	102.30	3,245.9	-30.8	213.1	-212.7	0.16	0.00	1.47
3,354.0	6.20	109.70	3,341.3	-33.7	223.1	-222.7	0.85	-0.10	7.71
3,449.0	5.50	105.60	3,435.8	-36.6	232.3	-231.9	0.86	-0.74	-4.32
3,544.0	5.40	107.20	3,530.4	-39.2	241.0	-240.5	0.19	-0.11	1.68
3,639.0	4.90	103.00	3,625.0	-41.4	249.2	-248.7	0.66	-0.53	-4.42
3,734.0	4.90	104.10	3,719.7	-43.3	257.1	-256.6	0.10	0.00	1.16
3,830.0	4.10	103.20	3,815.4	-45.1	264.4	-263.9	0.84	-0.83	-0.94
3,925.0	2.80	107.90	3,910.2	-46.6	269.9	-269.4	1.40	-1.37	4.95
4,020.0	1.80	134.60	4,005.1	-48.3	273.2	-272.6	1.52	-1.05	28.11
4,115.0	0.70	192.80	4,100.1	-49.9	274.1	-273.5	1.63	-1.16	61.26
4,210.0	1.60	285.60	4,195.1	-50.2	272.7	-272.1	1.87	0.95	97.68
4,306.0	1.40	317.40	4,291.1	-48.9	270.6	-270.1	0.88	-0.21	33.13
4,401.0	1.70	325.20	4,386.0	-46.9	269.0	-268.5	0.39	0.32	8.21
4,496.0	1.60	335.00	4,481.0	-44.6	267.7	-267.1	0.31	-0.11	10.32
4,591.0	1.10	8.60	4,576.0	-42.5	267.2	-266.7	0.96	-0.53	35.37
4,686.0	1.40	44.10	4,670.9	-40.7	268.2	-267.7	0.86	0.32	37.37
4,781.0	1.10	11.10	4,765.9	-39.0	269.2	-268.7	0.81	-0.32	-34.74
4,876.0	0.40	284.90	4,860.9	-38.0	269.0	-268.6	1.21	-0.74	-90.74
4,971.0	0.30	246.10	4,955.9	-38.0	268.5	-268.0	0.26	-0.11	-40.84
5,066.0	0.10	114.40	5,050.9	-38.2	268.3	-267.9	0.39	-0.21	-138.63
5,161.0	0.20	100.70	5,145.9	-38.2	268.6	-268.1	0.11	0.11	-14.42
5,257.0	0.40	179.10	5,241.9	-38.6	268.7	-268.3	0.43	0.21	81.67
5,352.0	0.40	217.80	5,336.9	-39.2	268.5	-268.1	0.28	0.00	40.74
5,447.0	0.40	177.90	5,431.9	-39.8	268.3	-267.9	0.29	0.00	-42.00
5,542.0	0.40	181.00	5,526.9	-40.4	268.3	-267.9	0.02	0.00	3.26
5,637.0	0.40	180.70	5,621.9	-41.1	268.3	-267.9	0.00	0.00	-0.32
5,732.0	0.50	142.00	5,716.9	-41.8	268.6	-268.1	0.33	0.11	-40.74
5,828.0	0.40	111.60	5,812.9	-42.2	269.2	-268.7	0.27	-0.10	-31.67
5,923.0	0.20	101.10	5,907.9	-42.4	269.6	-269.1	0.22	-0.21	-11.05
6,018.0	0.40	152.40	6,002.9	-42.7	269.9	-269.5	0.33	0.21	54.00
6,066.0	0.50	221.30	6,050.9	-43.0	269.9	-269.4	1.07	0.21	143.54

Company:	Bayswater Exploration & Production, LLC	Local Co-ordinate Reference:	Well Carlson F-15-16HN
Project:	SEC.15-T5N-R65W	TVD Reference:	WELL @ 4643.5ft (RKB - 22.5')
Site:	Carlson 15-D Pad Sec.15-T5N-R65W	MD Reference:	WELL @ 4643.5ft (RKB - 22.5')
Well:	Carlson F-15-16HN	North Reference:	True
Wellbore:	Wellbore #1	Survey Calculation Method:	Minimum Curvature
Design:	Wellbore #1	Database:	EDMNEW

Survey

Measured Depth (ft)	Inclination (°)	Azimuth (°)	Vertical Depth (ft)	+N/-S (ft)	+E/-W (ft)	Vertical Section (ft)	Dogleg Rate (°/100ft)	Build Rate (°/100ft)	Turn Rate (°/100ft)
6,113.0	4.80	268.90	6,097.8	-43.2	267.8	-267.3	9.53	9.15	101.28
6,161.0	9.10	275.80	6,145.5	-42.8	262.0	-261.5	9.11	8.96	14.38
6,209.0	12.20	276.80	6,192.6	-41.9	253.2	-252.7	6.47	6.46	2.08
6,257.0	14.30	273.30	6,239.4	-40.9	242.2	-241.8	4.68	4.38	-7.29
6,304.0	17.30	268.90	6,284.6	-40.7	229.4	-229.0	6.87	6.38	-9.36
6,352.0	21.90	269.30	6,329.8	-41.0	213.3	-212.9	9.59	9.58	0.83
6,399.0	26.30	270.30	6,372.7	-41.0	194.2	-193.7	9.40	9.36	2.13
6,447.0	30.70	270.00	6,414.9	-41.0	171.3	-170.8	9.17	9.17	-0.63
6,494.0	33.80	269.30	6,454.6	-41.1	146.2	-145.7	6.64	6.60	-1.49
6,542.0	36.30	269.60	6,493.9	-41.4	118.6	-118.2	5.22	5.21	0.63
6,590.0	38.30	271.40	6,532.1	-41.1	89.5	-89.1	4.75	4.17	3.75
6,638.0	42.30	272.30	6,568.7	-40.1	58.5	-58.1	8.42	8.33	1.88
6,685.0	46.80	271.20	6,602.2	-39.1	25.6	-25.1	9.71	9.57	-2.34
6,733.0	51.10	269.60	6,633.7	-38.9	-10.6	11.1	9.30	8.96	-3.33
6,780.0	55.10	268.10	6,661.9	-39.6	-48.2	48.6	8.88	8.51	-3.19
6,828.0	58.70	268.10	6,688.1	-41.0	-88.4	88.8	7.50	7.50	0.00
6,875.0	61.60	267.90	6,711.5	-42.4	-129.1	129.6	6.18	6.17	-0.43
6,923.0	64.50	268.80	6,733.2	-43.6	-171.9	172.3	6.27	6.04	1.88
6,970.0	67.50	269.50	6,752.4	-44.3	-214.8	215.3	6.53	6.38	1.49
7,018.0	70.20	270.30	6,769.7	-44.3	-259.6	260.0	5.84	5.63	1.67
7,065.0	72.60	270.50	6,784.7	-44.0	-304.1	304.6	5.12	5.11	0.43
7,113.0	75.40	270.50	6,797.9	-43.6	-350.2	350.7	5.83	5.83	0.00
7,161.0	80.60	270.20	6,807.9	-43.3	-397.2	397.6	10.85	10.83	-0.63
7,213.0	86.70	270.20	6,813.6	-43.2	-448.8	449.3	11.73	11.73	0.00
7,220.6	86.89	270.30	6,814.0	-43.1	-456.4	456.9	2.85	2.54	1.28
LPL 1100'FNL & 766'FEL, SEC.15									
7,323.0	89.50	271.60	6,817.3	-41.4	-558.7	559.2	2.85	2.55	1.27
7,417.0	89.10	270.70	6,818.4	-39.5	-652.7	653.1	1.05	-0.43	-0.96
7,511.0	89.60	271.00	6,819.5	-38.2	-746.7	747.1	0.62	0.53	0.32
7,606.0	88.40	270.30	6,821.1	-37.1	-841.7	842.0	1.46	-1.26	-0.74
7,700.0	90.70	268.10	6,821.9	-38.4	-935.6	936.0	3.39	2.45	-2.34
7,794.0	91.40	268.90	6,820.2	-40.8	-1,029.6	1,030.0	1.13	0.74	0.85
7,888.0	92.00	269.10	6,817.4	-42.5	-1,123.5	1,123.9	0.67	0.64	0.21
7,983.0	91.90	268.60	6,814.1	-44.4	-1,218.5	1,218.9	0.54	-0.11	-0.53
8,077.0	91.10	266.50	6,811.7	-48.4	-1,312.3	1,312.8	2.39	-0.85	-2.23
8,171.0	89.30	267.40	6,811.3	-53.4	-1,406.2	1,406.7	2.14	-1.91	0.96
8,265.0	88.90	268.60	6,812.8	-56.7	-1,500.1	1,500.7	1.35	-0.43	1.28
8,359.0	89.00	271.40	6,814.5	-56.7	-1,594.1	1,594.6	2.98	0.11	2.98
8,453.0	89.70	270.70	6,815.6	-55.0	-1,688.1	1,688.6	1.05	0.74	-0.74
8,545.0	90.10	269.50	6,815.8	-54.8	-1,780.1	1,780.6	1.37	0.43	-1.30
8,636.0	89.20	271.40	6,816.3	-54.1	-1,871.1	1,871.6	2.31	-0.99	2.09
8,728.0	89.30	270.70	6,817.5	-52.4	-1,963.0	1,963.5	0.77	0.11	-0.76
8,819.0	89.00	269.50	6,818.9	-52.2	-2,054.0	2,054.5	1.36	-0.33	-1.32
8,911.0	89.60	268.20	6,820.0	-54.1	-2,146.0	2,146.5	1.56	0.65	-1.41
9,002.0	88.10	269.80	6,821.8	-55.7	-2,237.0	2,237.4	2.41	-1.65	1.76
9,094.0	90.10	268.10	6,823.3	-57.4	-2,328.9	2,329.4	2.85	2.17	-1.85
9,186.0	89.60	270.00	6,823.5	-58.9	-2,420.9	2,421.4	2.14	-0.54	2.07
9,277.0	88.30	271.90	6,825.2	-57.4	-2,511.9	2,512.4	2.53	-1.43	2.09
9,369.0	88.70	271.00	6,827.6	-55.1	-2,603.8	2,604.3	1.07	0.43	-0.98
9,460.0	89.70	269.30	6,828.9	-54.8	-2,694.8	2,695.2	2.17	1.10	-1.87
9,551.0	88.40	269.60	6,830.4	-55.7	-2,785.8	2,786.2	1.47	-1.43	0.33
9,643.0	89.70	269.50	6,831.9	-56.4	-2,877.8	2,878.2	1.42	1.41	-0.11
9,735.0	91.20	269.50	6,831.2	-57.2	-2,969.8	2,970.2	1.63	1.63	0.00
9,827.0	89.90	269.50	6,830.3	-58.0	-3,061.8	3,062.2	1.41	-1.41	0.00

Company:	Bayswater Exploration & Production, LLC	Local Co-ordinate Reference:	Well Carlson F-15-16HN
Project:	SEC.15-T5N-R65W	TVD Reference:	WELL @ 4643.5ft (RKB - 22.5')
Site:	Carlson 15-D Pad Sec.15-T5N-R65W	MD Reference:	WELL @ 4643.5ft (RKB - 22.5')
Well:	Carlson F-15-16HN	North Reference:	True
Wellbore:	Wellbore #1	Survey Calculation Method:	Minimum Curvature
Design:	Wellbore #1	Database:	EDMNEW

Survey

Measured Depth (ft)	Inclination (°)	Azimuth (°)	Vertical Depth (ft)	+N/-S (ft)	+E/-W (ft)	Vertical Section (ft)	Dogleg Rate (°/100ft)	Build Rate (°/100ft)	Turn Rate (°/100ft)
9,919.0	90.50	269.30	6,830.0	-59.0	-3,153.7	3,154.2	0.69	0.65	-0.22
10,010.0	88.70	270.20	6,830.6	-59.4	-3,244.7	3,245.2	2.21	-1.98	0.99
10,102.0	89.30	269.60	6,832.2	-59.5	-3,336.7	3,337.2	0.92	0.65	-0.65
10,194.0	90.00	269.10	6,832.8	-60.6	-3,428.7	3,429.2	0.94	0.76	-0.54
10,285.0	89.50	271.40	6,833.2	-60.2	-3,519.7	3,520.2	2.59	-0.55	2.53
10,377.0	90.70	269.50	6,833.0	-59.5	-3,611.7	3,612.1	2.44	1.30	-2.07
10,469.0	88.60	269.60	6,833.6	-60.2	-3,703.7	3,704.1	2.29	-2.28	0.11
10,561.0	89.80	268.20	6,834.9	-62.0	-3,795.7	3,796.1	2.00	1.30	-1.52
10,652.0	88.60	269.10	6,836.1	-64.1	-3,886.6	3,887.1	1.65	-1.32	0.99
10,744.0	89.00	268.60	6,838.1	-65.9	-3,978.6	3,979.1	0.70	0.43	-0.54
10,836.0	87.60	269.60	6,840.8	-67.4	-4,070.5	4,071.0	1.87	-1.52	1.09
10,927.0	88.90	269.80	6,843.6	-67.9	-4,161.5	4,162.0	1.45	1.43	0.22
11,019.0	90.30	269.60	6,844.2	-68.3	-4,253.5	4,254.0	1.54	1.52	-0.22
11,110.0	90.30	271.00	6,843.7	-67.9	-4,344.5	4,345.0	1.54	0.00	1.54
11,202.0	91.40	270.90	6,842.4	-66.3	-4,436.4	4,436.9	1.20	1.20	-0.11
11,296.0	89.20	272.30	6,841.9	-63.7	-4,530.4	4,530.8	2.77	-2.34	1.49
11,390.0	90.00	270.20	6,842.5	-61.7	-4,624.4	4,624.8	2.39	0.85	-2.23
11,485.0	90.70	270.20	6,842.0	-61.3	-4,719.4	4,719.8	0.74	0.74	0.00
11,579.0	89.30	269.10	6,842.0	-61.9	-4,813.4	4,813.8	1.89	-1.49	-1.17
11,673.0	90.30	268.80	6,842.3	-63.6	-4,907.3	4,907.7	1.11	1.06	-0.32
11,767.0	90.00	269.50	6,842.0	-65.0	-5,001.3	5,001.7	0.81	-0.32	0.74
11,862.0	89.10	267.90	6,842.8	-67.2	-5,096.3	5,096.7	1.93	-0.95	-1.68
11,956.0	89.70	268.10	6,843.8	-70.5	-5,190.2	5,190.7	0.67	0.64	0.21
12,050.0	90.50	268.10	6,843.6	-73.6	-5,284.2	5,284.7	0.85	0.85	0.00
12,144.0	88.10	268.10	6,844.7	-76.7	-5,378.1	5,378.6	2.55	-2.55	0.00
12,238.0	89.00	269.50	6,847.1	-78.7	-5,472.1	5,472.6	1.77	0.96	1.49
12,333.0	89.30	269.50	6,848.5	-79.5	-5,567.1	5,567.6	0.32	0.32	0.00
12,427.0	90.40	268.20	6,848.8	-81.4	-5,661.0	5,661.6	1.81	1.17	-1.38
12,522.0	89.30	269.60	6,849.0	-83.2	-5,756.0	5,756.6	1.87	-1.16	1.47
12,616.0	89.40	271.90	6,850.1	-82.0	-5,850.0	5,850.5	2.45	0.11	2.45
12,710.0	89.50	271.00	6,851.0	-79.6	-5,944.0	5,944.5	0.96	0.11	-0.96
12,804.0	90.00	270.70	6,851.4	-78.2	-6,037.9	6,038.4	0.62	0.53	-0.32
12,898.0	90.20	271.20	6,851.2	-76.6	-6,131.9	6,132.4	0.57	0.21	0.53
12,992.0	90.50	270.20	6,850.7	-75.5	-6,225.9	6,226.4	1.11	0.32	-1.06
13,047.6	90.62	270.61	6,850.1	-75.1	-6,281.5	6,281.9	0.77	0.21	0.74
WP #1 (F-15-16HN)									
13,086.0	90.70	270.90	6,849.7	-74.6	-6,319.9	6,320.3	0.77	0.21	0.74
13,180.0	91.80	270.00	6,847.6	-73.9	-6,413.9	6,414.3	1.51	1.17	-0.96
13,274.0	90.00	268.90	6,846.2	-74.8	-6,507.9	6,508.3	2.24	-1.91	-1.17
13,368.0	91.00	269.10	6,845.3	-76.4	-6,601.8	6,602.3	1.08	1.06	0.21
13,462.0	91.50	269.30	6,843.3	-77.7	-6,695.8	6,696.3	0.57	0.53	0.21
13,556.0	92.20	269.30	6,840.3	-78.9	-6,789.7	6,790.2	0.74	0.74	0.00
13,651.0	90.10	268.10	6,838.3	-81.0	-6,884.7	6,885.2	2.55	-2.21	-1.26
13,745.0	90.60	267.90	6,837.8	-84.3	-6,978.6	6,979.1	0.57	0.53	-0.21
13,839.0	90.70	267.40	6,836.7	-88.1	-7,072.6	7,073.1	0.54	0.11	-0.53
13,933.0	90.70	269.10	6,835.6	-91.0	-7,166.5	7,167.1	1.81	0.00	1.81
14,028.0	91.50	269.10	6,833.7	-92.5	-7,261.5	7,262.0	0.84	0.84	0.00
14,122.0	91.20	270.30	6,831.5	-93.0	-7,355.4	7,356.0	1.32	-0.32	1.28
14,216.0	89.40	270.90	6,831.0	-92.0	-7,449.4	7,450.0	2.02	-1.91	0.64
14,310.0	89.50	270.90	6,831.9	-90.5	-7,543.4	7,544.0	0.11	0.11	0.00
14,404.0	91.50	269.80	6,831.1	-90.0	-7,637.4	7,637.9	2.43	2.13	-1.17
14,499.0	92.80	269.60	6,827.5	-90.5	-7,732.3	7,732.9	1.38	1.37	-0.21
14,593.0	91.20	269.50	6,824.3	-91.2	-7,826.3	7,826.8	1.71	-1.70	-0.11
14,636.0	91.20	269.10	6,823.4	-91.7	-7,869.3	7,869.8	0.93	0.00	-0.93

Company:	Bayswater Exploration & Production, LLC	Local Co-ordinate Reference:	Well Carlson F-15-16HN
Project:	SEC.15-T5N-R65W	TVD Reference:	WELL @ 4643.5ft (RKB - 22.5')
Site:	Carlson 15-D Pad Sec.15-T5N-R65W	MD Reference:	WELL @ 4643.5ft (RKB - 22.5')
Well:	Carlson F-15-16HN	North Reference:	True
Wellbore:	Wellbore #1	Survey Calculation Method:	Minimum Curvature
Design:	Wellbore #1	Database:	EDMNEW

Survey									
Measured Depth (ft)	Inclination (°)	Azimuth (°)	Vertical Depth (ft)	+N-S (ft)	+E-W (ft)	Vertical Section (ft)	Dogleg Rate (°/100ft)	Build Rate (°/100ft)	Turn Rate (°/100ft)
14,691.0	91.20	269.10	6,822.2	-92.6	-7,924.2	7,924.8	0.00	0.00	0.00
BHL 1100'FNL, 2340'FWL, SEC.16									

Design Targets									
Target Name	Dip Angle (°)	Dip Dir. (°)	TVD (ft)	+N-S (ft)	+E-W (ft)	Northing (ft)	Easting (ft)	Latitude	Longitude
SHL 1056'FNL, 309'FI - hit/miss target - survey hits target center - Point	0.00	0.00	1.0	0.0	0.0	1,391,065.32	3,239,202.17	40.403696	-104.641077
BHL 1100'FNL, 2340'FI - survey misses target center by 6.7ft at 14691.0ft MD (6822.2 TVD, -92.6 N, -7924.2 E) - Point	0.00	0.00	6,817.5	-88.3	-7,926.3	1,390,900.21	3,231,277.39	40.403450	-104.669537
WP #1 (F-15-16HN) - survey misses target center by 4.1ft at 13047.6ft MD (6850.1 TVD, -75.1 N, -6281.5 E) - Point	0.00	0.00	6,848.5	-78.9	-6,281.5	1,390,925.58	3,232,921.99	40.403477	-104.663631

Checked By: _____ Approved By: _____ Date: _____