

Bayswater Exploration & Production, LLC

Well Name: **Carlson B-15-16HC**

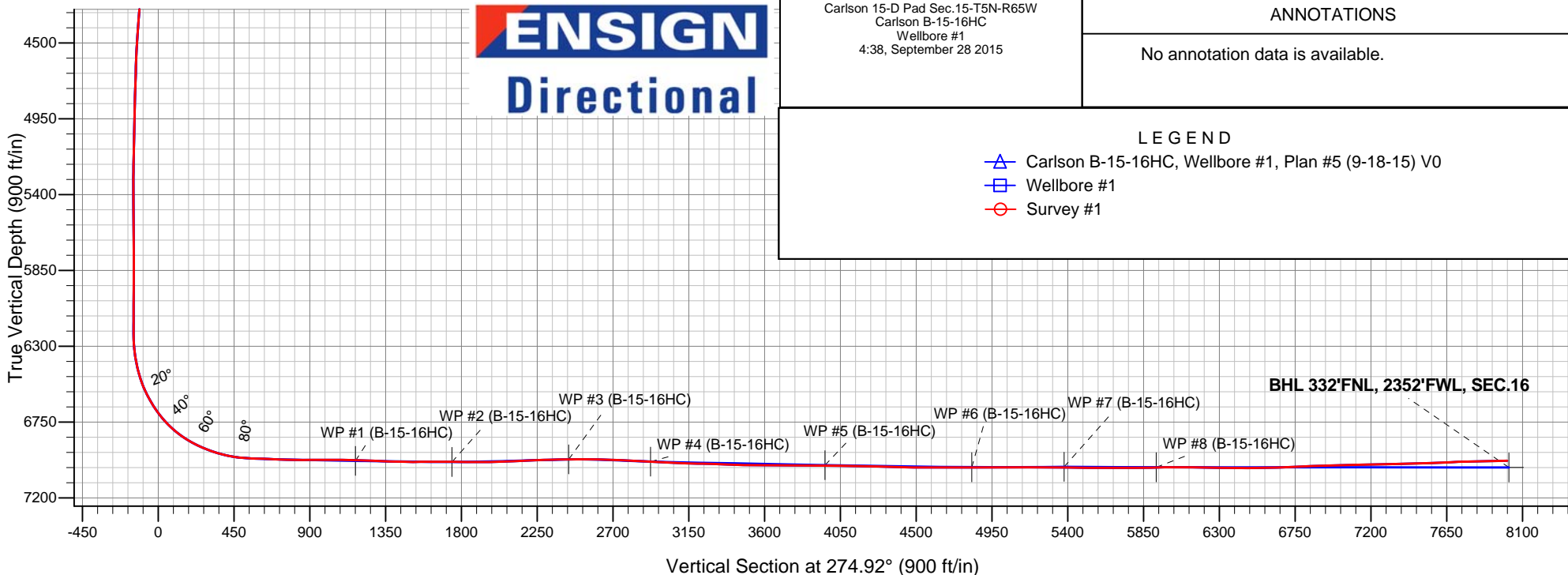
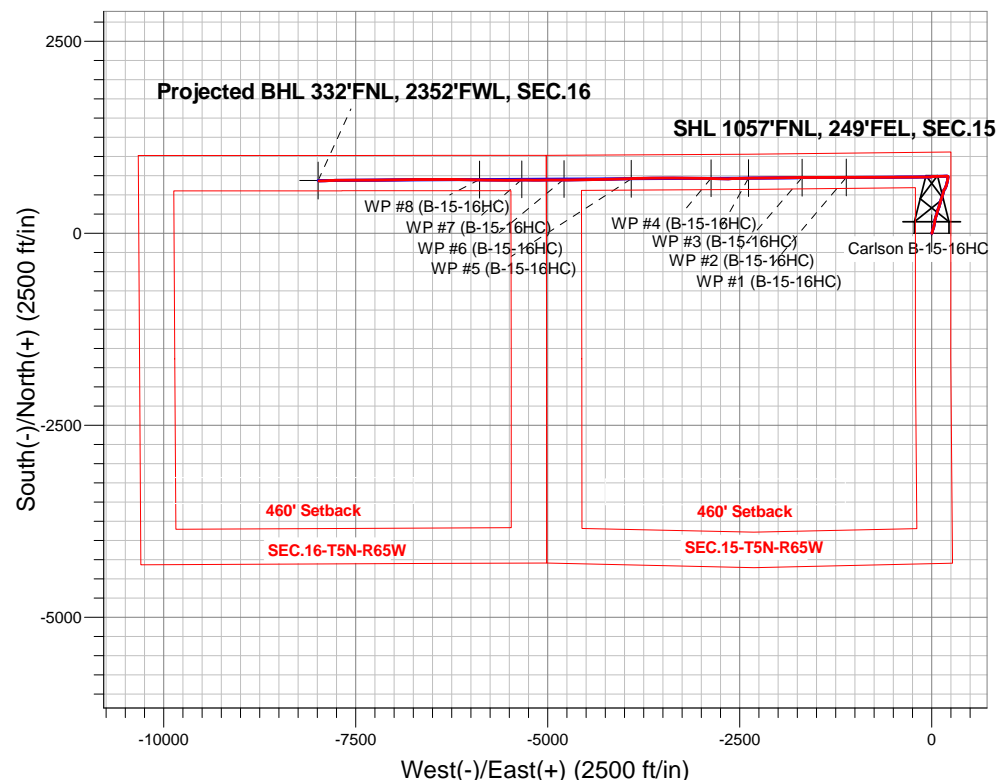
Surface Location: Carlson 15-D Pad Sec.15-T5N-R65W
North American Datum 1983 , US State Plane 1983 , Colorado Northern Zone

Ground Elevation: 4621.0

+N/-S	+E/-W	Northing	Easting	Latitude	Longitude	Slot
0.0	0.0	1391065.16	3239262.05	40.403694	-104.640862	
RKB - 22.5' WELL @ 4643.5ft (RKB - 22.5')						

FINAL SURVEY

Projected Bottom Hole Location
14917'MD 6980'TVD 681'N & 7980'W of SHL
90.92 degree Incl @ 267.4 degree AZM





Bayswater Exploration & Production, LLC

SEC.15-T5N-R65W

Carlson 15-D Pad Sec.15-T5N-R65W

Carlson B-15-16HC

Wellbore #1

Survey: Survey #1

Standard Survey Report

28 September, 2015



BAYSWATER
EXPLORATION & PRODUCTION, LLC

Company:	Bayswater Exploration & Production, LLC	Local Co-ordinate Reference:	Well Carlson B-15-16HC
Project:	SEC.15-T5N-R65W	TVD Reference:	WELL @ 4643.5ft (RKB - 22.5')
Site:	Carlson 15-D Pad Sec.15-T5N-R65W	MD Reference:	WELL @ 4643.5ft (RKB - 22.5')
Well:	Carlson B-15-16HC	North Reference:	True
Wellbore:	Wellbore #1	Survey Calculation Method:	Minimum Curvature
Design:	Wellbore #1	Database:	EDMNEW

Project	SEC.15-T5N-R65W, Weld County, Colorado		
Map System:	US State Plane 1983	System Datum:	Mean Sea Level
Geo Datum:	North American Datum 1983		Using Well Reference Point
Map Zone:	Colorado Northern Zone		Using geodetic scale factor

Site	Carlson 15-D Pad Sec.15-T5N-R65W				
Site Position:		Northing:	1,391,065.25ft	Latitude:	40.403695
From:	Lat/Long	Easting:	3,239,231.97ft	Longitude:	-104.640970
Position Uncertainty:	0.0 ft	Slot Radius:	"	Grid Convergence:	0.56 °

Well	Carlson B-15-16HC					
Well Position	+N-S	0.0 ft	Northing:	1,391,065.16 ft	Latitude:	40.403694
	+E-W	0.0 ft	Easting:	3,239,262.05 ft	Longitude:	-104.640862
Position Uncertainty		0.0 ft	Wellhead Elevation:	ft	Ground Level:	4,621.0 ft

Wellbore	Wellbore #1				
Magnetics	Model Name	Sample Date	Declination (°)	Dip Angle (°)	Field Strength (nT)
	IGRF2010	9/18/2015	8.22	66.92	52,699

Design	Wellbore #1				
Audit Notes:					
Version:	1.0	Phase:	ACTUAL	Tie On Depth:	0.0
Vertical Section:	Depth From (TVD) (ft)	+N/-S (ft)	+E/-W (ft)	Direction (°)	
	0.0	0.0	0.0	274.92	

Survey Program	Date	9/28/2015			
From (ft)	To (ft)	Survey (Wellbore)	Tool Name	Description	
160.0	14,917.0	Survey #1 (Wellbore #1)	MWD	MWD - Standard	

Survey										
Measured Depth (ft)	Inclination (°)	Azimuth (°)	Vertical Depth (ft)	+N/-S (ft)	+E/-W (ft)	Vertical Section (ft)	Dogleg Rate (°/100ft)	Build Rate (°/100ft)	Turn Rate (°/100ft)	
0.0	0.00	0.00	0.0	0.0	0.0	0.0	0.00	0.00	0.00	
1.0	0.00	61.00	1.0	0.0	0.0	0.0	0.38	0.38	0.00	
SHL 1057'FNL, 249'FEL, SEC.15										
160.0	0.60	61.00	160.0	0.4	0.7	-0.7	0.38	0.38	0.00	
253.0	0.80	52.20	253.0	1.0	1.7	-1.6	0.24	0.22	-9.46	
345.0	1.10	28.50	345.0	2.2	2.6	-2.4	0.53	0.33	-25.76	
437.0	2.30	26.00	436.9	4.6	3.8	-3.4	1.31	1.30	-2.72	
529.0	3.10	18.10	528.8	8.7	5.4	-4.7	0.96	0.87	-8.59	
621.0	3.60	8.60	620.7	13.9	6.6	-5.4	0.81	0.54	-10.33	
713.0	4.30	5.30	712.5	20.2	7.4	-5.6	0.80	0.76	-3.59	
795.0	4.90	12.70	794.2	26.7	8.4	-6.1	1.03	0.73	9.02	
926.0	5.70	13.00	924.6	38.5	11.1	-7.8	0.61	0.61	0.23	
1,022.0	8.10	17.40	1,019.9	49.6	14.2	-9.9	2.56	2.50	4.58	

Company:	Bayswater Exploration & Production, LLC	Local Co-ordinate Reference:	Well Carlson B-15-16HC
Project:	SEC.15-T5N-R65W	TVD Reference:	WELL @ 4643.5ft (RKB - 22.5')
Site:	Carlson 15-D Pad Sec.15-T5N-R65W	MD Reference:	WELL @ 4643.5ft (RKB - 22.5')
Well:	Carlson B-15-16HC	North Reference:	True
Wellbore:	Wellbore #1	Survey Calculation Method:	Minimum Curvature
Design:	Wellbore #1	Database:	EDMNEW

Survey

Measured Depth (ft)	Inclination (°)	Azimuth (°)	Vertical Depth (ft)	+N/-S (ft)	+E/-W (ft)	Vertical Section (ft)	Dogleg Rate (°/100ft)	Build Rate (°/100ft)	Turn Rate (°/100ft)
1,117.0	9.80	18.80	1,113.8	63.6	18.8	-13.3	1.80	1.79	1.47
1,209.0	9.60	19.70	1,204.5	78.2	23.9	-17.1	0.27	-0.22	0.98
1,301.0	9.20	11.20	1,295.2	92.7	27.9	-19.9	1.57	-0.43	-9.24
1,394.0	11.00	11.10	1,386.8	108.7	31.1	-21.7	1.94	1.94	-0.11
1,486.0	9.80	8.20	1,477.3	125.0	33.9	-23.1	1.42	-1.30	-3.15
1,578.0	8.90	10.90	1,568.0	139.8	36.4	-24.3	1.09	-0.98	2.93
1,670.0	9.20	8.90	1,658.9	154.0	38.8	-25.5	0.47	0.33	-2.17
1,762.0	8.30	6.50	1,749.8	167.9	40.7	-26.2	1.06	-0.98	-2.61
1,854.0	7.70	13.90	1,840.9	180.5	43.0	-27.3	1.29	-0.65	8.04
1,946.0	8.40	16.30	1,932.0	192.9	46.3	-29.6	0.84	0.76	2.61
2,039.0	8.40	19.50	2,024.0	205.8	50.5	-32.7	0.50	0.00	3.44
2,131.0	9.70	18.30	2,114.9	219.5	55.2	-36.2	1.43	1.41	-1.30
2,223.0	9.10	14.90	2,205.6	233.9	59.5	-39.2	0.89	-0.65	-3.70
2,315.0	9.60	17.70	2,296.4	248.2	63.7	-42.2	0.73	0.54	3.04
2,407.0	10.40	16.20	2,387.0	263.5	68.3	-45.5	0.91	0.87	-1.63
2,499.0	9.70	10.30	2,477.6	279.1	72.0	-47.9	1.35	-0.76	-6.41
2,594.0	9.60	20.70	2,571.3	294.4	76.3	-50.8	1.84	-0.11	10.95
2,690.0	11.70	22.00	2,665.6	310.9	82.8	-55.8	2.20	2.19	1.35
2,785.0	11.90	20.00	2,758.6	329.1	89.7	-61.2	0.48	0.21	-2.11
2,880.0	10.80	17.60	2,851.8	346.8	95.8	-65.7	1.26	-1.16	-2.53
2,975.0	11.60	15.30	2,944.9	364.5	101.0	-69.4	0.96	0.84	-2.42
3,070.0	10.60	13.90	3,038.2	382.1	105.6	-72.4	1.09	-1.05	-1.47
3,166.0	9.30	16.20	3,132.7	398.2	109.9	-75.3	1.42	-1.35	2.40
3,261.0	8.90	11.60	3,226.5	412.7	113.5	-77.7	0.87	-0.42	-4.84
3,356.0	8.10	15.40	3,320.5	426.4	116.7	-79.8	1.03	-0.84	4.00
3,452.0	7.70	17.40	3,415.6	439.0	120.5	-82.4	0.51	-0.42	2.08
3,547.0	8.60	24.90	3,509.6	451.6	125.4	-86.2	1.46	0.95	7.89
3,642.0	8.30	18.10	3,603.6	464.5	130.5	-90.2	1.10	-0.32	-7.16
3,737.0	8.40	18.40	3,697.6	477.6	134.8	-93.4	0.11	0.11	0.32
3,832.0	9.60	15.60	3,791.4	491.8	139.1	-96.5	1.34	1.26	-2.95
3,927.0	9.80	15.30	3,885.1	507.3	143.4	-99.4	0.22	0.21	-0.32
4,023.0	9.50	15.80	3,979.7	522.8	147.7	-102.3	0.32	-0.31	0.52
4,118.0	7.70	14.00	4,073.6	536.5	151.4	-104.8	1.92	-1.89	-1.89
4,213.0	7.60	12.80	4,167.8	548.8	154.3	-106.7	0.20	-0.11	-1.26
4,308.0	7.90	26.30	4,261.9	560.8	158.6	-109.9	1.94	0.32	14.21
4,403.0	7.70	39.00	4,356.0	571.6	165.5	-115.9	1.82	-0.21	13.37
4,499.0	8.70	31.30	4,451.1	582.8	173.3	-122.7	1.55	1.04	-8.02
4,594.0	9.20	24.40	4,544.9	595.8	180.2	-128.4	1.25	0.53	-7.26
4,689.0	8.70	14.20	4,638.8	609.7	185.1	-132.1	1.75	-0.53	-10.74
4,784.0	9.90	17.20	4,732.5	624.5	189.3	-135.0	1.36	1.26	3.16
4,879.0	8.50	13.50	4,826.3	639.1	193.3	-137.8	1.60	-1.47	-3.89
4,974.0	10.10	15.30	4,920.0	654.0	197.1	-140.4	1.71	1.68	1.89
5,069.0	8.40	11.20	5,013.8	668.8	200.7	-142.6	1.92	-1.79	-4.32
5,164.0	8.40	13.50	5,107.8	682.4	203.7	-144.4	0.35	0.00	2.42
5,259.0	8.40	10.70	5,201.8	695.9	206.6	-146.2	0.43	0.00	-2.95
5,354.0	6.20	9.80	5,296.0	707.8	208.7	-147.3	2.32	-2.32	-0.95
5,449.0	4.90	4.00	5,390.5	716.9	209.9	-147.7	1.49	-1.37	-6.11
5,545.0	3.70	357.30	5,486.3	724.1	210.0	-147.2	1.35	-1.25	-6.98
5,640.0	3.40	343.50	5,581.1	729.9	209.1	-145.8	0.95	-0.32	-14.53
5,735.0	1.70	14.70	5,676.0	733.9	208.6	-145.0	2.25	-1.79	32.84
5,830.0	1.40	7.70	5,771.0	736.4	209.2	-145.3	0.37	-0.32	-7.37
5,925.0	0.90	352.60	5,865.9	738.3	209.2	-145.2	0.61	-0.53	-15.89
6,021.0	0.50	19.30	5,961.9	739.5	209.3	-145.1	0.53	-0.42	27.81
6,116.0	0.50	41.80	6,056.9	740.2	209.7	-145.5	0.21	0.00	23.68

Company:	Bayswater Exploration & Production, LLC	Local Co-ordinate Reference:	Well Carlson B-15-16HC
Project:	SEC.15-T5N-R65W	TVD Reference:	WELL @ 4643.5ft (RKB - 22.5')
Site:	Carlson 15-D Pad Sec.15-T5N-R65W	MD Reference:	WELL @ 4643.5ft (RKB - 22.5')
Well:	Carlson B-15-16HC	North Reference:	True
Wellbore:	Wellbore #1	Survey Calculation Method:	Minimum Curvature
Design:	Wellbore #1	Database:	EDMNEW

Survey

Measured Depth (ft)	Inclination (°)	Azimuth (°)	Vertical Depth (ft)	+N/-S (ft)	+E/-W (ft)	Vertical Section (ft)	Dogleg Rate (°/100ft)	Build Rate (°/100ft)	Turn Rate (°/100ft)
6,211.0	0.40	29.50	6,151.9	740.8	210.1	-145.8	0.15	-0.11	-12.95
6,306.0	0.50	328.70	6,246.9	741.4	210.1	-145.7	0.49	0.11	-64.00
6,402.0	7.70	278.60	6,342.6	742.7	203.5	-139.1	7.70	7.50	-52.19
6,497.0	13.60	270.00	6,435.9	743.7	186.0	-121.6	6.42	6.21	-9.05
6,545.0	17.40	268.70	6,482.2	743.5	173.2	-108.8	7.95	7.92	-2.71
6,592.0	21.30	267.70	6,526.5	743.0	157.6	-93.3	8.33	8.30	-2.13
6,640.0	25.40	269.50	6,570.6	742.6	138.6	-74.4	8.67	8.54	3.75
6,687.0	29.10	270.50	6,612.4	742.6	117.1	-53.0	7.93	7.87	2.13
6,735.0	32.50	267.00	6,653.6	742.0	92.5	-28.6	8.00	7.08	-7.29
6,783.0	36.40	265.80	6,693.2	740.3	65.4	-1.7	8.25	8.13	-2.50
6,831.0	40.50	265.80	6,730.7	738.1	35.7	27.7	8.54	8.54	0.00
6,878.0	44.70	267.00	6,765.3	736.1	3.9	59.2	9.10	8.94	2.55
6,926.0	49.80	269.30	6,797.9	735.0	-31.3	94.2	11.19	10.63	4.79
6,973.0	54.30	269.80	6,826.8	734.7	-68.3	131.1	9.61	9.57	1.06
7,021.0	57.50	269.30	6,853.7	734.4	-108.1	170.6	6.72	6.67	-1.04
7,068.0	62.10	269.10	6,877.4	733.9	-148.7	211.0	9.79	9.79	-0.43
7,116.0	66.90	268.60	6,898.0	733.0	-192.0	254.1	10.04	10.00	-1.04
7,163.0	69.70	269.30	6,915.4	732.2	-235.6	297.5	6.12	5.96	1.49
7,211.0	72.50	270.30	6,930.9	732.0	-281.1	342.8	6.16	5.83	2.08
7,258.0	76.20	269.80	6,943.6	732.1	-326.3	387.8	7.94	7.87	-1.06
7,306.0	78.90	269.50	6,954.0	731.8	-373.2	434.5	5.66	5.63	-0.63
7,354.0	84.60	269.50	6,960.8	731.4	-420.7	481.8	11.88	11.88	0.00
7,380.0	85.80	269.30	6,963.0	731.1	-446.6	507.6	4.68	4.62	-0.77
7,450.0	88.11	269.43	6,966.7	730.3	-516.5	577.1	3.31	3.30	0.19
7,496.0	87.58	268.78	6,968.5	729.6	-562.4	622.9	1.82	-1.15	-1.41
7,591.0	87.85	269.56	6,972.3	728.2	-657.3	717.3	0.87	0.28	0.82
7,685.0	89.16	269.57	6,974.7	727.5	-751.3	810.9	1.39	1.39	0.01
7,779.0	90.75	269.59	6,974.8	726.8	-845.3	904.5	1.69	1.69	0.02
7,873.0	89.96	269.55	6,974.2	726.1	-939.3	998.1	0.84	-0.84	-0.04
7,967.0	89.34	270.35	6,974.8	726.0	-1,033.3	1,091.7	1.08	-0.66	0.85
8,046.9	88.52	270.72	6,976.3	726.8	-1,113.2	1,171.4	1.13	-1.03	0.47
WP #1 (B-15-16HC)									
8,061.0	88.37	270.79	6,976.7	727.0	-1,127.3	1,185.4	1.13	-1.03	0.47
8,155.0	87.49	271.25	6,980.0	728.6	-1,221.2	1,279.1	1.06	-0.94	0.49
8,249.0	87.93	270.27	6,983.8	729.9	-1,315.1	1,372.8	1.14	0.47	-1.04
8,344.0	89.08	268.96	6,986.3	729.2	-1,410.1	1,467.4	1.83	1.21	-1.38
8,437.0	90.66	268.85	6,986.5	727.5	-1,503.0	1,559.9	1.70	1.70	-0.12
8,529.0	89.96	269.31	6,986.0	726.0	-1,595.0	1,651.4	0.91	-0.76	0.50
8,621.0	89.69	269.43	6,986.3	725.0	-1,687.0	1,742.9	0.32	-0.29	0.13
8,622.8	89.69	269.43	6,986.3	725.0	-1,688.8	1,744.7	0.23	-0.19	-0.13
WP #2 (B-15-16HC)									
8,712.0	89.52	269.31	6,986.9	724.0	-1,778.0	1,833.5	0.23	-0.19	-0.13
8,803.0	90.22	269.54	6,987.1	723.1	-1,869.0	1,924.1	0.81	0.77	0.25
8,895.0	91.54	268.74	6,985.7	721.7	-1,961.0	2,015.6	1.68	1.43	-0.87
8,986.0	92.77	269.57	6,982.3	720.3	-2,051.9	2,106.1	1.63	1.35	0.91
9,078.0	92.42	270.48	6,978.1	720.4	-2,143.8	2,197.7	1.06	-0.38	0.99
9,170.0	91.98	269.88	6,974.6	720.7	-2,235.7	2,289.3	0.81	-0.48	-0.65
9,262.0	90.92	268.51	6,972.2	719.4	-2,327.7	2,380.8	1.88	-1.15	-1.49
9,318.9	90.32	268.07	6,971.6	717.7	-2,384.5	2,437.3	1.31	-1.05	-0.78
WP #3 (B-15-16HC)									
9,353.0	89.96	267.80	6,971.6	716.5	-2,418.6	2,471.1	1.31	-1.05	-0.78
9,445.0	89.60	268.30	6,971.9	713.3	-2,510.6	2,562.5	0.67	-0.39	0.54
9,536.0	88.29	268.86	6,973.6	711.1	-2,601.5	2,652.9	1.57	-1.44	0.62
9,627.0	88.02	270.55	6,976.5	710.6	-2,692.5	2,743.5	1.88	-0.30	1.86

Company:	Bayswater Exploration & Production, LLC	Local Co-ordinate Reference:	Well Carlson B-15-16HC
Project:	SEC.15-T5N-R65W	TVD Reference:	WELL @ 4643.5ft (RKB - 22.5')
Site:	Carlson 15-D Pad Sec.15-T5N-R65W	MD Reference:	WELL @ 4643.5ft (RKB - 22.5')
Well:	Carlson B-15-16HC	North Reference:	True
Wellbore:	Wellbore #1	Survey Calculation Method:	Minimum Curvature
Design:	Wellbore #1	Database:	EDMNEW

Survey

Measured Depth (ft)	Inclination (°)	Azimuth (°)	Vertical Depth (ft)	+N/-S (ft)	+E/-W (ft)	Vertical Section (ft)	Dogleg Rate (°/100ft)	Build Rate (°/100ft)	Turn Rate (°/100ft)
9,719.0	87.49	270.50	6,980.1	711.4	-2,784.4	2,835.1	0.58	-0.58	-0.05
9,807.2	86.82	270.90	6,984.5	712.5	-2,872.5	2,923.0	0.89	-0.76	0.46
WP #4 (B-15-16HC)									
9,811.0	86.79	270.92	6,984.7	712.6	-2,876.3	2,926.8	0.89	-0.76	0.46
9,903.0	86.44	270.69	6,990.1	713.9	-2,968.1	3,018.4	0.45	-0.38	-0.25
9,995.0	87.85	270.81	6,994.7	715.1	-3,060.0	3,110.0	1.54	1.53	0.13
10,087.0	89.52	271.90	6,996.8	717.3	-3,151.9	3,201.8	2.17	1.82	1.18
10,178.0	88.20	270.29	6,998.6	719.0	-3,242.9	3,292.6	2.29	-1.45	-1.77
10,269.0	87.49	269.65	7,002.1	718.9	-3,333.8	3,383.2	1.05	-0.78	-0.70
10,361.0	89.34	270.30	7,004.6	718.9	-3,425.8	3,474.8	2.13	2.01	0.71
10,453.0	89.52	270.14	7,005.5	719.3	-3,517.8	3,566.5	0.26	0.20	-0.17
10,545.0	89.43	269.17	7,006.4	718.7	-3,609.8	3,658.1	1.06	-0.10	-1.05
10,637.0	89.43	269.04	7,007.3	717.3	-3,701.8	3,749.6	0.14	0.00	-0.14
10,728.0	89.60	268.64	7,008.0	715.4	-3,792.7	3,840.1	0.48	0.19	-0.44
10,820.0	89.52	267.52	7,008.8	712.3	-3,884.7	3,931.4	1.22	-0.09	-1.22
10,848.3	89.52	267.43	7,009.0	711.1	-3,913.0	3,959.5	0.31	0.00	-0.31
WP #5 (B-15-16HC)									
10,911.0	89.52	267.24	7,009.5	708.2	-3,975.6	4,021.7	0.31	0.00	-0.31
11,003.0	89.08	269.62	7,010.6	705.7	-4,067.5	4,113.1	2.63	-0.48	2.59
11,094.0	88.81	269.93	7,012.3	705.3	-4,158.5	4,203.7	0.45	-0.30	0.34
11,189.0	88.20	269.02	7,014.8	704.4	-4,253.5	4,298.2	1.15	-0.64	-0.96
11,283.0	88.72	268.13	7,017.3	702.1	-4,347.4	4,391.6	1.10	0.55	-0.95
11,377.0	89.34	268.75	7,018.9	699.5	-4,441.4	4,485.0	0.93	0.66	0.66
11,471.0	90.13	268.95	7,019.3	697.7	-4,535.4	4,578.5	0.87	0.84	0.21
11,566.0	90.22	268.43	7,019.1	695.5	-4,630.3	4,672.9	0.56	0.09	-0.55
11,660.0	90.13	270.25	7,018.8	694.4	-4,724.3	4,766.5	1.94	-0.10	1.94
11,723.6	89.83	270.44	7,018.8	694.8	-4,787.9	4,829.8	0.55	-0.47	0.30
WP #6 (B-15-16HC)									
11,754.0	89.69	270.53	7,018.9	695.0	-4,818.3	4,860.2	0.55	-0.47	0.30
11,848.0	89.52	269.29	7,019.6	694.9	-4,912.3	4,953.8	1.33	-0.18	-1.32
11,943.0	90.22	269.28	7,019.8	693.7	-5,007.3	5,048.3	0.74	0.74	-0.01
12,037.0	90.84	269.76	7,018.9	692.9	-5,101.3	5,141.9	0.83	0.66	0.51
12,131.0	90.22	270.24	7,018.0	692.9	-5,195.3	5,235.6	0.83	-0.66	0.51
12,225.0	88.81	269.91	7,018.8	693.0	-5,289.3	5,329.2	1.54	-1.50	-0.35
12,273.1	88.90	269.92	7,019.8	693.0	-5,337.4	5,377.2	0.19	0.19	0.01
WP #7 (B-15-16HC)									
12,320.0	88.99	269.92	7,020.7	692.9	-5,384.3	5,423.8	0.19	0.19	0.01
12,414.0	89.60	270.01	7,021.8	692.8	-5,478.3	5,517.5	0.66	0.65	0.10
12,508.0	90.04	270.53	7,022.1	693.3	-5,572.3	5,611.2	0.72	0.47	0.55
12,602.0	89.96	269.02	7,022.1	692.9	-5,666.3	5,704.8	1.61	-0.09	-1.61
12,696.0	90.40	268.91	7,021.8	691.2	-5,760.2	5,798.3	0.48	0.47	-0.12
12,791.0	90.48	270.75	7,021.1	690.9	-5,855.2	5,892.9	1.94	0.08	1.94
12,823.4	90.76	271.15	7,020.7	691.5	-5,887.6	5,925.2	1.50	0.85	1.23
WP #8 (B-15-16HC)									
12,885.0	91.28	271.91	7,019.6	693.1	-5,949.2	5,986.7	1.50	0.85	1.23
12,979.0	90.40	271.86	7,018.3	696.2	-6,043.1	6,080.6	0.94	-0.94	-0.05
13,073.0	89.34	271.52	7,018.5	699.0	-6,137.1	6,174.4	1.18	-1.13	-0.36
13,167.0	88.72	270.63	7,020.1	700.7	-6,231.1	6,268.2	1.15	-0.66	-0.95
13,261.0	88.72	270.23	7,022.2	701.4	-6,325.0	6,361.9	0.43	0.00	-0.43
13,355.0	89.69	268.88	7,023.5	700.7	-6,419.0	6,455.5	1.77	1.03	-1.44
13,449.0	91.71	269.79	7,022.3	699.6	-6,513.0	6,549.0	2.36	2.15	0.97
13,543.0	91.36	269.33	7,019.8	698.9	-6,607.0	6,642.6	0.61	-0.37	-0.49
13,637.0	92.15	269.89	7,016.9	698.3	-6,700.9	6,736.1	1.03	0.84	0.60

Company:	Bayswater Exploration & Production, LLC	Local Co-ordinate Reference:	Well Carlson B-15-16HC
Project:	SEC.15-T5N-R65W	TVD Reference:	WELL @ 4643.5ft (RKB - 22.5')
Site:	Carlson 15-D Pad Sec.15-T5N-R65W	MD Reference:	WELL @ 4643.5ft (RKB - 22.5')
Well:	Carlson B-15-16HC	North Reference:	True
Wellbore:	Wellbore #1	Survey Calculation Method:	Minimum Curvature
Design:	Wellbore #1	Database:	EDMNEW

Survey

Measured Depth (ft)	Inclination (°)	Azimuth (°)	Vertical Depth (ft)	+N/-S (ft)	+E/-W (ft)	Vertical Section (ft)	Dogleg Rate (°/100ft)	Build Rate (°/100ft)	Turn Rate (°/100ft)
13,732.0	92.68	270.00	7,012.9	698.2	-6,795.8	6,830.7	0.57	0.56	0.12
13,826.0	92.15	268.79	7,009.0	697.2	-6,889.7	6,924.1	1.40	-0.56	-1.29
13,920.0	90.92	268.46	7,006.5	694.9	-6,983.7	7,017.5	1.35	-1.31	-0.35
14,014.0	91.54	269.71	7,004.4	693.4	-7,077.6	7,111.0	1.48	0.66	1.33
14,108.0	91.63	270.29	7,001.8	693.4	-7,171.6	7,204.6	0.62	0.10	0.62
14,203.0	90.84	270.51	6,999.8	694.1	-7,266.6	7,299.3	0.86	-0.83	0.23
14,297.0	91.19	268.50	6,998.1	693.3	-7,360.6	7,392.9	2.17	0.37	-2.14
14,391.0	91.71	268.19	6,995.7	690.6	-7,454.5	7,486.2	0.64	0.55	-0.33
14,485.0	92.07	269.23	6,992.6	688.4	-7,548.4	7,579.6	1.17	0.38	1.11
14,579.0	92.86	270.12	6,988.6	687.9	-7,642.3	7,673.2	1.27	0.84	0.95
14,674.0	91.71	270.36	6,984.8	688.3	-7,737.2	7,767.8	1.24	-1.21	0.25
14,768.0	91.01	268.08	6,982.6	687.0	-7,831.2	7,861.3	2.54	-0.74	-2.43
14,836.0	90.92	267.40	6,981.4	684.4	-7,899.1	7,928.7	1.01	-0.13	-1.00
14,917.0	90.92	267.40	6,980.1	680.7	-7,980.0	8,009.0	0.00	0.00	0.00

BHL 325'FNL, 2342'FWL, SEC.16

Design Targets

Target Name	Dip Angle (°)	Dip Dir. (°)	TVD (ft)	+N/-S (ft)	+E/-W (ft)	Northing (ft)	Easting (ft)	Latitude	Longitude
- hit/miss target									
- Shape									
SHL 1057'FNL, 249'FI	0.00	0.00	1.0	0.0	0.0	1,391,065.17	3,239,262.05	40.403694	-104.640862
- survey hits target center									
- Point									
WP #3 (B-15-16HC)	0.00	0.00	6,972.0	719.2	-2,384.6	1,391,761.19	3,236,870.69	40.405668	-104.649424
- survey misses target center by 1.6ft at 9318.9ft MD (6971.6 TVD, 717.7 N, -2384.5 E)									
- Point									
WP #1 (B-15-16HC)	0.00	0.00	6,981.0	726.5	-1,113.1	1,391,780.81	3,238,142.01	40.405688	-104.644859
- survey misses target center by 4.7ft at 8047.0ft MD (6976.3 TVD, 726.8 N, -1113.2 E)									
- Point									
WP #4 (B-15-16HC)	0.00	0.00	6,985.0	716.5	-2,872.4	1,391,753.77	3,236,382.96	40.405660	-104.651176
- survey misses target center by 4.0ft at 9807.2ft MD (6984.5 TVD, 712.5 N, -2872.5 E)									
- Point									
WP #2 (B-15-16HC)	0.00	0.00	6,987.0	723.2	-1,688.8	1,391,771.93	3,237,566.39	40.405679	-104.646926
- survey misses target center by 1.9ft at 8622.8ft MD (6986.3 TVD, 725.0 N, -1688.8 E)									
- Point									
WP #5 (B-15-16HC)	0.00	0.00	7,006.0	710.5	-3,913.0	1,391,737.69	3,235,342.51	40.405643	-104.654912
- survey misses target center by 3.1ft at 10848.3ft MD (7009.0 TVD, 711.1 N, -3913.0 E)									
- Point									
WP #7 (B-15-16HC)	0.00	0.00	7,016.0	702.4	-5,337.5	1,391,715.79	3,233,918.22	40.405620	-104.660027
- survey misses target center by 10.2ft at 12273.1ft MD (7019.8 TVD, 693.0 N, -5337.4 E)									
- Point									
WP #6 (B-15-16HC)	0.00	0.00	7,018.0	705.6	-4,787.8	1,391,724.31	3,234,467.84	40.405629	-104.658053
- survey misses target center by 10.9ft at 11723.6ft MD (7018.8 TVD, 694.8 N, -4787.9 E)									
- Point									
WP #8 (B-15-16HC)	0.00	0.00	7,018.5	699.3	-5,887.4	1,391,707.36	3,233,368.40	40.405612	-104.662002
- survey misses target center by 8.1ft at 12823.3ft MD (7020.7 TVD, 691.5 N, -5887.6 E)									
- Point									
BHL 325'FNL, 2342'FI	0.00	0.00	7,019.0	687.3	-7,989.9	1,391,675.00	3,231,266.24	40.405577	-104.669551
- survey misses target center by 40.6ft at 14917.0ft MD (6980.1 TVD, 680.7 N, -7980.0 E)									
- Point									

Company:	Bayswater Exploration & Production, LLC	Local Co-ordinate Reference:	Well Carlson B-15-16HC
Project:	SEC.15-T5N-R65W	TVD Reference:	WELL @ 4643.5ft (RKB - 22.5')
Site:	Carlson 15-D Pad Sec.15-T5N-R65W	MD Reference:	WELL @ 4643.5ft (RKB - 22.5')
Well:	Carlson B-15-16HC	North Reference:	True
Wellbore:	Wellbore #1	Survey Calculation Method:	Minimum Curvature
Design:	Wellbore #1	Database:	EDMNEW

Checked By: _____ Approved By: _____ Date: _____