

# Bayswater Exploration & Production, LLC

Well Name: **Carlson A-15-16HN**

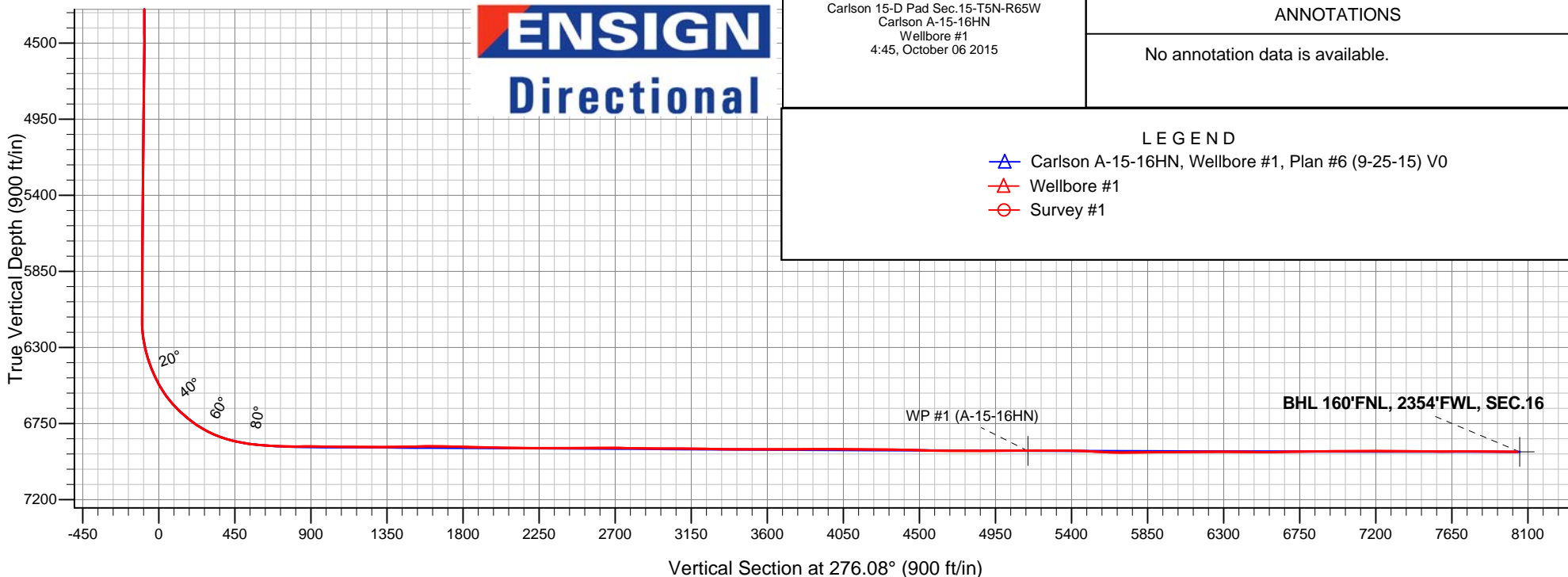
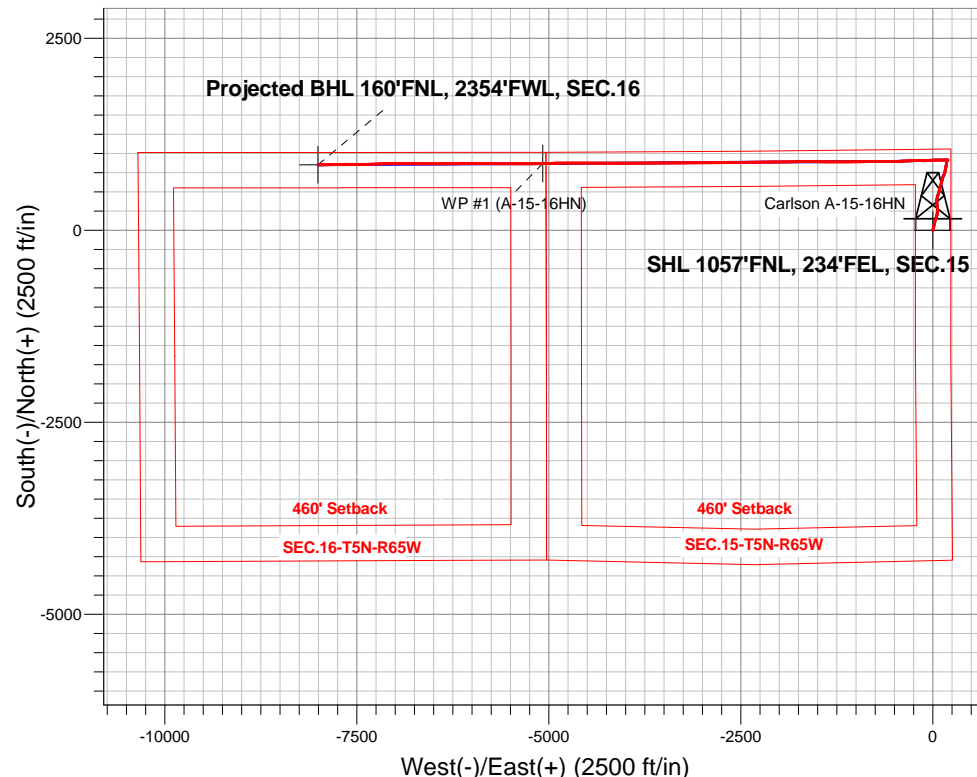
Surface Location: Carlson 15-D Pad Sec.15-T5N-R65W  
North American Datum 1983 , US State Plane 1983 , Colorado Northern Zone

Ground Elevation: 4621.0

+N/-S	+E/-W	Northing	Easting	Latitude	Longitude	Slot
0.0	0.0	1391065.30	3239277.09	40.403694	-104.640808	
RKB - 22.5' WELL @ 4643.5ft (RKB - 22.5')						

## FINAL SURVEY

**Projected Bottom Hole Location**  
**14866'MD 6917'TVD 852'N & 7993'W of SHL**  
**89.5 degree Incl @ 268.4 degree AZM**





# **Bayswater Exploration & Production, LLC**

**SEC.15-T5N-R65W**

**Carlson 15-D Pad Sec.15-T5N-R65W**

**Carlson A-15-16HN**

**Wellbore #1**

**Survey: Survey #1**

## **Standard Survey Report**

**06 October, 2015**



**BAYSWATER**  
**EXPLORATION & PRODUCTION, LLC**

<b>Company:</b>	Bayswater Exploration & Production, LLC	<b>Local Co-ordinate Reference:</b>	Well Carlson A-15-16HN
<b>Project:</b>	SEC.15-T5N-R65W	<b>TVD Reference:</b>	WELL @ 4643.5ft (RKB - 22.5')
<b>Site:</b>	Carlson 15-D Pad Sec.15-T5N-R65W	<b>MD Reference:</b>	WELL @ 4643.5ft (RKB - 22.5')
<b>Well:</b>	Carlson A-15-16HN	<b>North Reference:</b>	True
<b>Wellbore:</b>	Wellbore #1	<b>Survey Calculation Method:</b>	Minimum Curvature
<b>Design:</b>	Wellbore #1	<b>Database:</b>	EDMNEW

<b>Project</b>	SEC.15-T5N-R65W, Weld County, Colorado		
<b>Map System:</b>	US State Plane 1983	<b>System Datum:</b>	Mean Sea Level
<b>Geo Datum:</b>	North American Datum 1983		Using Well Reference Point
<b>Map Zone:</b>	Colorado Northern Zone		Using geodetic scale factor

Site	Carlson 15-D Pad Sec.15-T5N-R65W				
Site Position:		Northing:	1,391,065.25 ft	Latitude:	40.403695
From:	Lat/Long	Easting:	3,239,231.97 ft	Longitude:	-104.640970
Position Uncertainty:	0.0 ft	Slot Radius:	"	Grid Convergence:	0.56 °

Well	Carlson A-15-16HN					
Well Position	+N/-S	0.0 ft	Northing:	1,391,065.30 ft	Latitude:	40.403694
	+E/-W	0.0 ft	Easting:	3,239,277.09 ft	Longitude:	-104.640808
Position Uncertainty		0.0 ft	Wellhead Elevation:	ft	Ground Level:	4,621.0 ft

<b>Wellbore</b>	Wellbore #1				
<b>Magnetics</b>	<b>Model Name</b>	<b>Sample Date</b>	<b>Declination (°)</b>	<b>Dip Angle (°)</b>	<b>Field Strength (nT)</b>
	IGRF2010	8/28/2015	8.23	66.93	52,705

<b>Design</b>	Wellbore #1				
<b>Audit Notes:</b>					
<b>Version:</b>	1.0	<b>Phase:</b>	ACTUAL	<b>Tie On Depth:</b>	0.0
<b>Vertical Section:</b>	<b>Depth From (TVD) (ft)</b>	<b>+N/-S (ft)</b>	<b>+E/-W (ft)</b>	<b>Direction (°)</b>	
	0.0	0.0	0.0	276.08	

<b>Survey Program</b>	<b>Date</b>	10/6/2015			
<b>From (ft)</b>	<b>To (ft)</b>	<b>Survey (Wellbore)</b>	<b>Tool Name</b>	<b>Description</b>	
160.0	14,866.0	Survey #1 (Wellbore #1)	MWD	MWD - Standard	

<b>Survey</b>										
<b>Measured Depth (ft)</b>	<b>Inclination (°)</b>	<b>Azimuth (°)</b>	<b>Vertical Depth (ft)</b>	<b>+N/-S (ft)</b>	<b>+E/-W (ft)</b>	<b>Vertical Section (ft)</b>	<b>Dogleg Rate (°/100ft)</b>	<b>Build Rate (°/100ft)</b>	<b>Turn Rate (°/100ft)</b>	
0.0	0.00	0.00	0.0	0.0	0.0	0.0	0.00	0.00	0.00	
1.0	0.00	168.20	1.0	0.0	0.0	0.0	0.50	0.50	0.00	
<b>SHL 1057'FNL, 234'FEL, SEC.15</b>										
160.0	0.80	168.20	160.0	-1.1	0.2	-0.3	0.50	0.50	0.00	
253.0	1.10	353.10	253.0	-0.8	0.3	-0.3	2.04	0.32	-188.28	
345.0	1.90	24.30	345.0	1.4	0.8	-0.6	1.21	0.87	33.91	
437.0	2.90	19.20	436.9	5.0	2.2	-1.6	1.11	1.09	-5.54	
529.0	4.70	9.50	528.7	10.9	3.6	-2.4	2.07	1.96	-10.54	
621.0	5.90	12.00	620.3	19.3	5.2	-3.1	1.33	1.30	2.72	
713.0	8.30	12.50	711.6	30.4	7.6	-4.3	2.61	2.61	0.54	
795.0	9.60	13.50	792.6	42.8	10.5	-5.9	1.60	1.59	1.22	
927.0	10.30	11.10	922.6	65.1	15.3	-8.3	0.62	0.53	-1.82	
1,022.0	9.20	15.30	1,016.2	80.8	18.9	-10.3	1.38	-1.16	4.42	

<b>Company:</b>	Bayswater Exploration & Production, LLC	<b>Local Co-ordinate Reference:</b>	Well Carlson A-15-16HN
<b>Project:</b>	SEC.15-T5N-R65W	<b>TVD Reference:</b>	WELL @ 4643.5ft (RKB - 22.5')
<b>Site:</b>	Carlson 15-D Pad Sec.15-T5N-R65W	<b>MD Reference:</b>	WELL @ 4643.5ft (RKB - 22.5')
<b>Well:</b>	Carlson A-15-16HN	<b>North Reference:</b>	True
<b>Wellbore:</b>	Wellbore #1	<b>Survey Calculation Method:</b>	Minimum Curvature
<b>Design:</b>	Wellbore #1	<b>Database:</b>	EDMNEW

Survey										
Measured Depth (ft)	Inclination (°)	Azimuth (°)	Vertical Depth (ft)	+N/-S (ft)	+E/-W (ft)	Vertical Section (ft)	Dogleg Rate (°/100ft)	Build Rate (°/100ft)	Turn Rate (°/100ft)	
1,117.0	10.20	10.90	1,109.8	96.3	22.5	-12.2	1.31	1.05	-4.63	
1,210.0	12.40	12.80	1,201.0	114.2	26.3	-14.1	2.40	2.37	2.04	
1,302.0	12.40	17.20	1,290.9	133.2	31.4	-17.1	1.03	0.00	4.78	
1,394.0	14.30	23.00	1,380.4	153.1	38.8	-22.3	2.52	2.07	6.30	
1,486.0	16.10	18.30	1,469.2	175.7	47.2	-28.4	2.37	1.96	-5.11	
1,578.0	17.30	11.40	1,557.3	201.2	53.9	-32.3	2.52	1.30	-7.50	
1,670.0	16.70	6.70	1,645.3	227.8	58.2	-33.7	1.63	-0.65	-5.11	
1,763.0	15.80	3.30	1,734.6	253.7	60.5	-33.3	1.41	-0.97	-3.66	
1,855.0	14.90	358.40	1,823.3	278.0	60.9	-31.1	1.72	-0.98	-5.33	
1,947.0	14.20	353.70	1,912.4	301.0	59.3	-27.1	1.49	-0.76	-5.11	
2,039.0	13.80	348.90	2,001.6	323.0	55.9	-21.4	1.33	-0.43	-5.22	
2,131.0	13.10	353.10	2,091.1	344.1	52.6	-15.8	1.31	-0.76	4.57	
2,223.0	11.60	358.10	2,181.0	363.7	51.0	-12.2	2.00	-1.63	5.43	
2,315.0	10.60	2.60	2,271.3	381.4	51.1	-10.4	1.44	-1.09	4.89	
2,407.0	11.00	6.00	2,361.6	398.6	52.4	-9.9	0.82	0.43	3.70	
2,499.0	11.30	11.80	2,451.9	416.2	55.2	-10.8	1.26	0.33	6.30	
2,595.0	12.40	13.70	2,545.9	435.4	59.5	-13.1	1.22	1.15	1.98	
2,690.0	14.30	17.70	2,638.3	456.5	65.5	-16.8	2.22	2.00	4.21	
2,785.0	14.90	17.20	2,730.2	479.3	72.7	-21.5	0.65	0.63	-0.53	
2,880.0	14.50	16.50	2,822.1	502.4	79.7	-26.0	0.46	-0.42	-0.74	
2,976.0	13.40	15.50	2,915.3	524.6	86.1	-30.0	1.17	-1.15	-1.04	
3,071.0	14.10	12.10	3,007.5	546.6	91.4	-33.0	1.13	0.74	-3.58	
3,166.0	13.60	14.10	3,099.8	568.7	96.6	-35.8	0.73	-0.53	2.11	
3,261.0	14.00	17.90	3,192.0	590.5	102.8	-39.7	1.04	0.42	4.00	
3,357.0	12.60	20.70	3,285.5	611.3	110.1	-44.8	1.60	-1.46	2.92	
3,452.0	11.60	9.50	3,378.4	630.5	115.3	-47.9	2.68	-1.05	-11.79	
3,547.0	11.00	9.00	3,471.5	648.8	118.3	-49.0	0.64	-0.63	-0.53	
3,642.0	11.60	14.40	3,564.7	667.0	122.1	-50.8	1.28	0.63	5.68	
3,737.0	13.50	24.60	3,657.4	686.4	129.1	-55.7	3.07	2.00	10.74	
3,832.0	16.80	24.40	3,749.1	709.0	139.4	-63.6	3.47	3.47	-0.21	
3,928.0	17.40	19.30	3,840.9	735.1	149.9	-71.2	1.68	0.63	-5.31	
4,023.0	17.10	12.60	3,931.6	762.2	157.6	-76.0	2.11	-0.32	-7.05	
4,118.0	16.50	11.10	4,022.6	789.0	163.3	-78.8	0.78	-0.63	-1.58	
4,213.0	14.90	9.50	4,114.0	814.3	167.9	-80.7	1.74	-1.68	-1.68	
4,308.0	13.00	14.10	4,206.2	836.7	172.5	-82.9	2.31	-2.00	4.84	
4,404.0	10.90	11.10	4,300.1	856.1	176.9	-85.2	2.28	-2.19	-3.13	
4,499.0	9.70	3.30	4,393.6	872.9	179.1	-85.6	1.93	-1.26	-8.21	
4,594.0	8.00	1.40	4,487.5	887.5	179.7	-84.7	1.82	-1.79	-2.00	
4,689.0	7.10	12.60	4,581.6	899.9	181.1	-84.8	1.81	-0.95	11.79	
4,784.0	4.70	19.30	4,676.1	909.3	183.7	-86.4	2.62	-2.53	7.05	
4,879.0	1.80	40.10	4,771.0	914.1	185.9	-88.1	3.25	-3.05	21.89	
4,974.0	0.60	133.60	4,866.0	914.9	187.3	-89.4	2.03	-1.26	98.42	
5,069.0	0.70	107.00	4,960.9	914.4	188.2	-90.3	0.33	0.11	-28.00	
5,164.0	0.60	99.00	5,055.9	914.1	189.2	-91.4	0.14	-0.11	-8.42	
5,259.0	0.40	56.20	5,150.9	914.2	190.0	-92.1	0.43	-0.21	-45.05	
5,355.0	1.00	90.70	5,246.9	914.4	191.1	-93.2	0.74	0.63	35.94	
5,450.0	1.00	93.30	5,341.9	914.4	192.8	-94.9	0.05	0.00	2.74	
5,545.0	0.30	33.20	5,436.9	914.5	193.7	-95.8	0.94	-0.74	-63.26	
5,640.0	0.40	257.30	5,531.9	914.7	193.5	-95.6	0.68	0.11	-143.05	
5,735.0	0.00	100.50	5,626.9	914.6	193.2	-95.3	0.42	-0.42	0.00	
5,830.0	0.40	73.50	5,721.9	914.7	193.5	-95.6	0.42	0.42	0.00	
5,926.0	0.50	102.10	5,817.9	914.7	194.3	-96.3	0.25	0.10	29.79	
6,021.0	0.70	99.30	5,912.9	914.5	195.2	-97.3	0.21	0.21	-2.95	
6,116.0	0.80	118.30	6,007.9	914.1	196.4	-98.5	0.28	0.11	20.00	

<b>Company:</b>	Bayswater Exploration & Production, LLC	<b>Local Co-ordinate Reference:</b>	Well Carlson A-15-16HN
<b>Project:</b>	SEC.15-T5N-R65W	<b>TVD Reference:</b>	WELL @ 4643.5ft (RKB - 22.5')
<b>Site:</b>	Carlson 15-D Pad Sec.15-T5N-R65W	<b>MD Reference:</b>	WELL @ 4643.5ft (RKB - 22.5')
<b>Well:</b>	Carlson A-15-16HN	<b>North Reference:</b>	True
<b>Wellbore:</b>	Wellbore #1	<b>Survey Calculation Method:</b>	Minimum Curvature
<b>Design:</b>	Wellbore #1	<b>Database:</b>	EDMNEW

## Survey

Measured Depth (ft)	Inclination (°)	Azimuth (°)	Vertical Depth (ft)	+N/-S (ft)	+E/-W (ft)	Vertical Section (ft)	Dogleg Rate (°/100ft)	Build Rate (°/100ft)	Turn Rate (°/100ft)
6,211.0	0.80	168.90	6,102.9	913.1	197.1	-99.3	0.72	0.00	53.26
6,259.0	1.00	199.50	6,150.9	912.4	197.0	-99.3	1.07	0.42	63.75
6,307.0	5.20	266.30	6,198.8	911.9	194.7	-97.1	10.19	8.75	139.17
6,355.0	8.90	275.10	6,246.4	912.1	188.9	-91.2	8.01	7.71	18.33
6,402.0	11.50	278.80	6,292.7	913.1	180.6	-82.9	5.70	5.53	7.87
6,450.0	15.10	276.00	6,339.4	914.5	169.7	-71.9	7.62	7.50	-5.83
6,497.0	19.10	272.40	6,384.3	915.4	155.9	-58.1	8.80	8.51	-7.66
6,545.0	22.60	268.10	6,429.2	915.5	138.8	-41.1	7.95	7.29	-8.96
6,592.0	25.50	267.20	6,472.1	914.7	119.7	-22.2	6.22	6.17	-1.91
6,640.0	27.60	272.30	6,515.0	914.6	98.2	-0.9	6.45	4.38	10.63
6,688.0	32.50	271.40	6,556.6	915.4	74.2	23.1	10.25	10.21	-1.88
6,736.0	37.30	267.20	6,595.9	915.0	46.8	50.3	11.18	10.00	-8.75
6,783.0	42.40	266.80	6,632.0	913.4	16.7	80.1	10.86	10.85	-0.85
6,831.0	46.60	265.20	6,666.2	911.0	-16.8	113.2	9.06	8.75	-3.33
6,878.0	48.60	267.90	6,697.9	909.0	-51.5	147.4	6.01	4.26	5.74
6,926.0	51.00	268.80	6,728.9	907.9	-88.1	183.7	5.20	5.00	1.88
6,973.0	55.70	270.70	6,756.9	907.8	-125.8	221.2	10.51	10.00	4.04
7,021.0	60.80	270.00	6,782.2	908.0	-166.6	261.8	10.70	10.63	-1.46
7,068.0	64.50	270.90	6,803.8	908.3	-208.3	303.3	8.05	7.87	1.91
7,116.0	67.70	268.90	6,823.2	908.3	-252.2	347.0	7.68	6.67	-4.17
7,163.0	73.10	267.00	6,839.0	906.7	-296.5	390.8	12.10	11.49	-4.04
7,211.0	77.70	266.10	6,851.1	903.9	-342.8	436.6	9.75	9.58	-1.88
7,259.0	78.30	265.80	6,861.1	900.5	-389.6	482.8	1.39	1.25	-0.63
7,307.0	81.30	266.60	6,869.6	897.4	-436.8	529.3	6.46	6.25	1.67
7,346.0	84.20	269.10	6,874.5	896.0	-475.4	567.6	9.78	7.44	6.41
7,424.0	87.00	271.60	6,880.5	896.4	-553.2	645.0	4.81	3.59	3.21
7,518.0	87.50	269.10	6,885.0	897.0	-647.1	738.4	2.71	0.53	-2.66
7,613.0	91.40	270.00	6,885.9	896.3	-742.0	832.8	4.21	4.11	0.95
7,707.0	89.40	269.60	6,885.2	895.9	-836.0	926.2	2.17	-2.13	-0.43
7,801.0	89.50	268.90	6,886.1	894.7	-930.0	1,019.5	0.75	0.11	-0.74
7,896.0	88.50	267.90	6,887.8	892.1	-1,025.0	1,113.6	1.49	-1.05	-1.05
7,990.0	89.40	269.40	6,889.5	889.8	-1,118.9	1,206.8	1.86	0.96	1.60
8,084.0	91.00	271.20	6,889.2	890.3	-1,212.9	1,300.3	2.56	1.70	1.91
8,178.0	91.00	271.00	6,887.5	892.1	-1,306.9	1,394.0	0.21	0.00	-0.21
8,272.0	91.20	270.70	6,885.7	893.5	-1,400.8	1,487.6	0.38	0.21	-0.32
8,366.0	90.20	270.10	6,884.6	894.2	-1,494.8	1,581.1	1.24	-1.06	-0.64
8,460.0	89.30	271.00	6,885.0	895.1	-1,588.8	1,674.7	1.35	-0.96	0.96
8,552.0	88.50	269.60	6,886.8	895.6	-1,680.8	1,766.2	1.75	-0.87	-1.52
8,644.0	88.10	268.90	6,889.5	894.4	-1,772.8	1,857.5	0.88	-0.43	-0.76
8,735.0	88.90	268.70	6,891.9	892.5	-1,863.7	1,947.7	0.91	0.88	-0.22
8,826.0	88.70	268.60	6,893.8	890.3	-1,954.7	2,037.9	0.25	-0.22	-0.11
8,918.0	89.20	268.40	6,895.5	887.9	-2,046.6	2,129.1	0.59	0.54	-0.22
9,009.0	91.00	269.60	6,895.3	886.3	-2,137.6	2,219.4	2.38	1.98	1.32
9,101.0	89.50	269.60	6,894.9	885.7	-2,229.6	2,310.8	1.63	-1.63	0.00
9,193.0	89.30	269.30	6,895.9	884.8	-2,321.6	2,402.2	0.39	-0.22	-0.33
9,284.0	90.70	270.10	6,895.9	884.3	-2,412.6	2,492.6	1.77	1.54	0.88
9,376.0	90.80	270.30	6,894.7	884.7	-2,504.6	2,584.1	0.24	0.11	0.22
9,468.0	89.80	269.60	6,894.2	884.6	-2,596.6	2,675.6	1.33	-1.09	-0.76
9,558.0	88.30	269.10	6,895.7	883.5	-2,686.5	2,765.0	1.76	-1.67	-0.56
9,650.0	89.00	268.70	6,897.9	881.8	-2,778.5	2,856.2	0.88	0.76	-0.43
9,742.0	91.50	269.60	6,897.5	880.4	-2,870.5	2,947.6	2.89	2.72	0.98
9,834.0	89.30	268.70	6,896.8	879.1	-2,962.5	3,038.9	2.58	-2.39	-0.98
9,926.0	88.50	269.60	6,898.6	877.7	-3,054.4	3,130.2	1.31	-0.87	0.98
10,018.0	89.50	270.30	6,900.2	877.6	-3,146.4	3,221.6	1.33	1.09	0.76

<b>Company:</b>	Bayswater Exploration & Production, LLC	<b>Local Co-ordinate Reference:</b>	Well Carlson A-15-16HN
<b>Project:</b>	SEC.15-T5N-R65W	<b>TVD Reference:</b>	WELL @ 4643.5ft (RKB - 22.5')
<b>Site:</b>	Carlson 15-D Pad Sec.15-T5N-R65W	<b>MD Reference:</b>	WELL @ 4643.5ft (RKB - 22.5')
<b>Well:</b>	Carlson A-15-16HN	<b>North Reference:</b>	True
<b>Wellbore:</b>	Wellbore #1	<b>Survey Calculation Method:</b>	Minimum Curvature
<b>Design:</b>	Wellbore #1	<b>Database:</b>	EDMNEW

## Survey

Measured Depth (ft)	Inclination (°)	Azimuth (°)	Vertical Depth (ft)	+N/-S (ft)	+E/-W (ft)	Vertical Section (ft)	Dogleg Rate (°/100ft)	Build Rate (°/100ft)	Turn Rate (°/100ft)
10,110.0	89.40	270.10	6,901.1	877.9	-3,238.4	3,313.2	0.24	-0.11	-0.22
10,201.0	89.50	269.80	6,901.9	877.9	-3,329.4	3,403.6	0.35	0.11	-0.33
10,292.0	90.00	268.90	6,902.3	876.8	-3,420.4	3,494.0	1.13	0.55	-0.99
10,384.0	90.00	268.20	6,902.3	874.5	-3,512.4	3,585.2	0.76	0.00	-0.76
10,476.0	90.10	270.50	6,902.3	873.4	-3,604.4	3,676.6	2.50	0.11	2.50
10,568.0	90.20	269.30	6,902.0	873.3	-3,696.4	3,768.0	1.31	0.11	-1.30
10,659.0	90.20	270.00	6,901.7	872.7	-3,787.3	3,858.5	0.77	0.00	0.77
10,751.0	89.60	270.70	6,901.9	873.3	-3,879.3	3,950.0	1.00	-0.65	0.76
10,843.0	90.00	270.50	6,902.2	874.3	-3,971.3	4,041.6	0.49	0.43	-0.22
10,934.0	89.50	270.10	6,902.6	874.7	-4,062.3	4,132.1	0.70	-0.55	-0.44
11,026.0	90.00	270.00	6,903.0	874.8	-4,154.3	4,223.6	0.55	0.54	-0.11
11,117.0	88.30	268.40	6,904.3	873.5	-4,245.3	4,313.9	2.57	-1.87	-1.76
11,212.0	89.60	269.80	6,906.1	872.1	-4,340.3	4,408.2	2.01	1.37	1.47
11,306.0	88.20	269.10	6,907.9	871.1	-4,434.3	4,501.6	1.67	-1.49	-0.74
11,400.0	88.80	270.80	6,910.3	871.1	-4,528.2	4,595.0	1.92	0.64	1.81
11,494.0	89.80	270.70	6,911.5	872.3	-4,622.2	4,688.6	1.07	1.06	-0.11
11,589.0	90.00	270.30	6,911.6	873.1	-4,717.2	4,783.1	0.47	0.21	-0.42
11,683.0	90.00	270.10	6,911.6	873.5	-4,811.2	4,876.6	0.21	0.00	-0.21
11,777.0	90.30	269.40	6,911.4	873.0	-4,905.2	4,970.1	0.81	0.32	-0.74
11,871.0	90.40	268.20	6,910.8	871.1	-4,999.2	5,063.3	1.28	0.11	-1.28
11,951.0	90.65	268.96	6,910.1	869.1	-5,079.2	5,142.7	1.00	0.32	0.95
<b>WP #1 (A-15-16HN)</b>									
11,966.0	90.70	269.10	6,909.9	868.8	-5,094.1	5,157.5	1.00	0.32	0.95
12,060.0	89.40	269.30	6,909.8	867.5	-5,188.1	5,250.8	1.40	-1.38	0.21
12,154.0	90.00	268.90	6,910.3	866.0	-5,282.1	5,344.1	0.77	0.64	-0.43
12,248.0	88.20	270.50	6,911.8	865.6	-5,376.1	5,437.5	2.56	-1.91	1.70
12,342.0	86.90	269.40	6,915.8	865.5	-5,470.0	5,530.9	1.81	-1.38	-1.17
12,437.0	87.80	271.40	6,920.2	866.1	-5,564.9	5,625.3	2.31	0.95	2.11
12,531.0	89.80	270.70	6,922.2	867.9	-5,658.9	5,718.9	2.25	2.13	-0.74
12,625.0	91.20	270.50	6,921.4	868.8	-5,752.8	5,812.5	1.50	1.49	-0.21
12,719.0	90.80	270.10	6,919.7	869.3	-5,846.8	5,906.0	0.60	-0.43	-0.43
12,814.0	90.70	270.30	6,918.5	869.7	-5,941.8	6,000.5	0.24	-0.11	0.21
12,908.0	90.10	269.10	6,917.8	869.2	-6,035.8	6,093.9	1.43	-0.64	-1.28
13,002.0	90.00	270.00	6,917.7	868.4	-6,129.8	6,187.3	0.96	-0.11	0.96
13,096.0	89.30	269.10	6,918.3	867.7	-6,223.8	6,280.7	1.21	-0.74	-0.96
13,190.0	90.70	270.00	6,918.3	867.0	-6,317.8	6,374.1	1.77	1.49	0.96
13,284.0	89.00	269.30	6,918.6	866.4	-6,411.8	6,467.5	1.96	-1.81	-0.74
13,377.0	90.00	270.10	6,919.4	865.9	-6,504.8	6,559.9	1.38	1.08	0.86
13,472.0	90.70	269.80	6,918.8	865.8	-6,599.8	6,654.4	0.80	0.74	-0.32
13,566.0	91.40	270.80	6,917.1	866.3	-6,693.8	6,747.9	1.30	0.74	1.06
13,660.0	91.10	271.60	6,915.0	868.3	-6,787.7	6,841.5	0.91	-0.32	0.85
13,754.0	89.60	270.30	6,914.4	869.8	-6,881.7	6,935.1	2.11	-1.60	-1.38
13,849.0	90.50	270.00	6,914.4	870.1	-6,976.7	7,029.6	1.00	0.95	-0.32
13,943.0	90.50	268.40	6,913.5	868.8	-7,070.7	7,122.9	1.70	0.00	-1.70
14,037.0	90.20	267.90	6,913.0	865.7	-7,164.6	7,216.0	0.62	-0.32	-0.53
14,131.0	89.50	267.20	6,913.2	861.7	-7,258.5	7,309.0	1.05	-0.74	-0.74
14,226.0	89.00	269.10	6,914.5	858.7	-7,353.5	7,403.1	2.07	-0.53	2.00
14,320.0	89.70	269.80	6,915.5	857.8	-7,447.5	7,496.4	1.05	0.74	0.74
14,414.0	90.30	270.50	6,915.5	858.0	-7,541.5	7,589.9	0.98	0.64	0.74
14,508.0	90.10	270.00	6,915.2	858.4	-7,635.5	7,683.4	0.57	-0.21	-0.53
14,602.0	89.70	269.30	6,915.4	857.8	-7,729.5	7,776.8	0.86	-0.43	-0.74
14,697.0	89.60	268.90	6,915.9	856.3	-7,824.5	7,871.1	0.43	-0.11	-0.42
14,801.0	89.50	268.40	6,916.8	853.9	-7,928.4	7,974.3	0.49	-0.10	-0.48
14,866.0	89.50	268.40	6,917.3	852.1	-7,993.4	8,038.7	0.00	0.00	0.00

<b>Company:</b>	Bayswater Exploration & Production, LLC	<b>Local Co-ordinate Reference:</b>	Well Carlson A-15-16HN
<b>Project:</b>	SEC.15-T5N-R65W	<b>TVD Reference:</b>	WELL @ 4643.5ft (RKB - 22.5')
<b>Site:</b>	Carlson 15-D Pad Sec.15-T5N-R65W	<b>MD Reference:</b>	WELL @ 4643.5ft (RKB - 22.5')
<b>Well:</b>	Carlson A-15-16HN	<b>North Reference:</b>	True
<b>Wellbore:</b>	Wellbore #1	<b>Survey Calculation Method:</b>	Minimum Curvature
<b>Design:</b>	Wellbore #1	<b>Database:</b>	EDMNEW

#### Survey

Measured Depth (ft)	Inclination (°)	Azimuth (°)	Vertical Depth (ft)	+N/-S (ft)	+E/-W (ft)	Vertical Section (ft)	Dogleg Rate (°/100ft)	Build Rate (°/100ft)	Turn Rate (°/100ft)
BHL 160'FNL, 2342'FWL, SEC.16									

#### Design Targets

Target Name - hit/miss target - Shape	Dip Angle (°)	Dip Dir. (°)	TVD (ft)	+N/-S (ft)	+E/-W (ft)	Northing (ft)	Easting (ft)	Latitude	Longitude
SHL 1057'FNL, 234'FI - survey hits target center - Point	0.00	0.00	1.0	0.0	0.0	1,391,065.32	3,239,277.09	40.403694	-104.640808
WP #1 (A-15-16HN) - survey misses target center by 2.5ft at 11951.0ft MD (6910.1 TVD, 869.1 N, -5079.2 E) - Point	0.00	0.00	6,912.5	868.6	-5,079.2	1,391,884.62	3,234,189.92	40.406077	-104.659046
BHL 160'FNL, 2342'FI - survey misses target center by 12.3ft at 14866.0ft MD (6917.3 TVD, 852.1 N, -7993.4 E) - Point	0.00	0.00	6,917.5	852.3	-8,005.7	1,391,840.01	3,231,263.86	40.406030	-104.669554

Checked By: \_\_\_\_\_ Approved By: \_\_\_\_\_ Date: \_\_\_\_\_