

EXTRACTION OIL & GAS

WELD COUNTY, COLORADO (NAD 83)

SW SE SEC 36 T6N R66W 6th P.M.

CS-KINKADE 2-1-13

ORIGINAL WELLBORE

27 June, 2015

Plan: PROPOSAL #1





Project: WELD COUNTY, COLORADO (NAD 83)
Site: SW SE SEC 36 T6N R66W 6th P.M.
Well: CS-KINKADE 2-1-13
Wellbore: ORIGINAL WELLBORE
Design: PROPOSAL #1

ANNOTATIONS									
TVD	MD	Inc	Azi	+N/-S	+E/-W	VSec	Dep	Annotation	
1000.0	1000.0	0.00	0.00	0.0	0.0	0.0	0.0	START NUDGE (2°/100ft BUR)	
1183.5	1183.6	3.67	132.33	-4.0	4.3	4.0	5.9	EOB TO 3.67° INC	
1800.0	1801.4	3.67	132.33	-30.6	33.6	31.1	45.5	9 5/8" SURFACE CSG	
6201.5	6212.0	3.67	132.33	-220.8	242.5	224.4	328.0	END OF TANGENT	
6385.0	6395.6	0.00	0.00	-224.8	246.8	228.4	333.8	EOD TO VERTICAL	
6415.0	6425.6	0.00	0.00	-224.8	246.8	228.4	333.8	KOP (10°/100ft BUR)	
6988.0	7325.7	90.00	180.18	-797.8	245.0	801.4	906.9	LANDING PNT - CS-KINKADE 2-1-13	
6988.0	20320.8	90.00	180.18	-13792.9	203.3	13794.4	13902.0	BHL - CS-KINKADE 2-1-13	

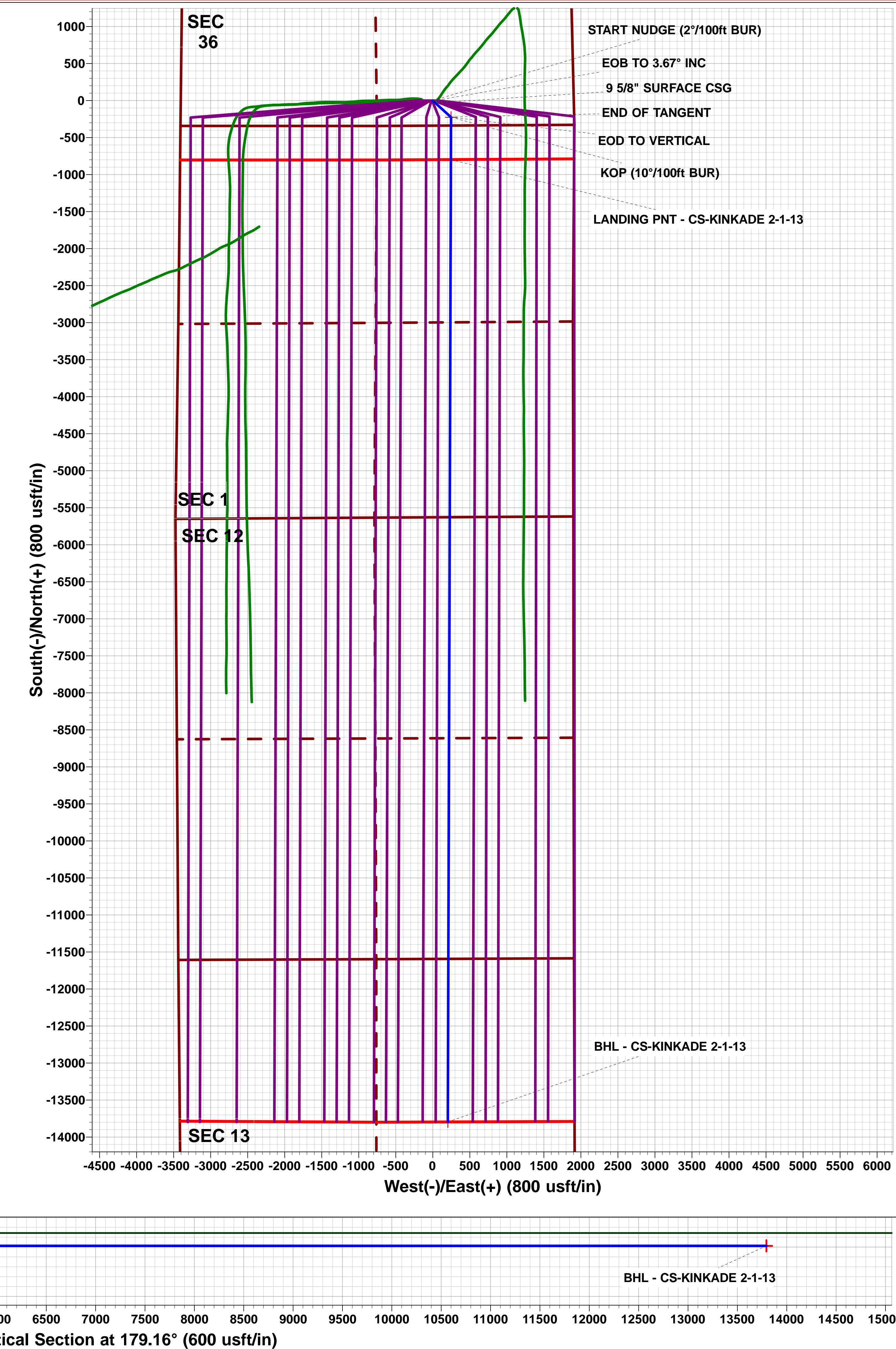
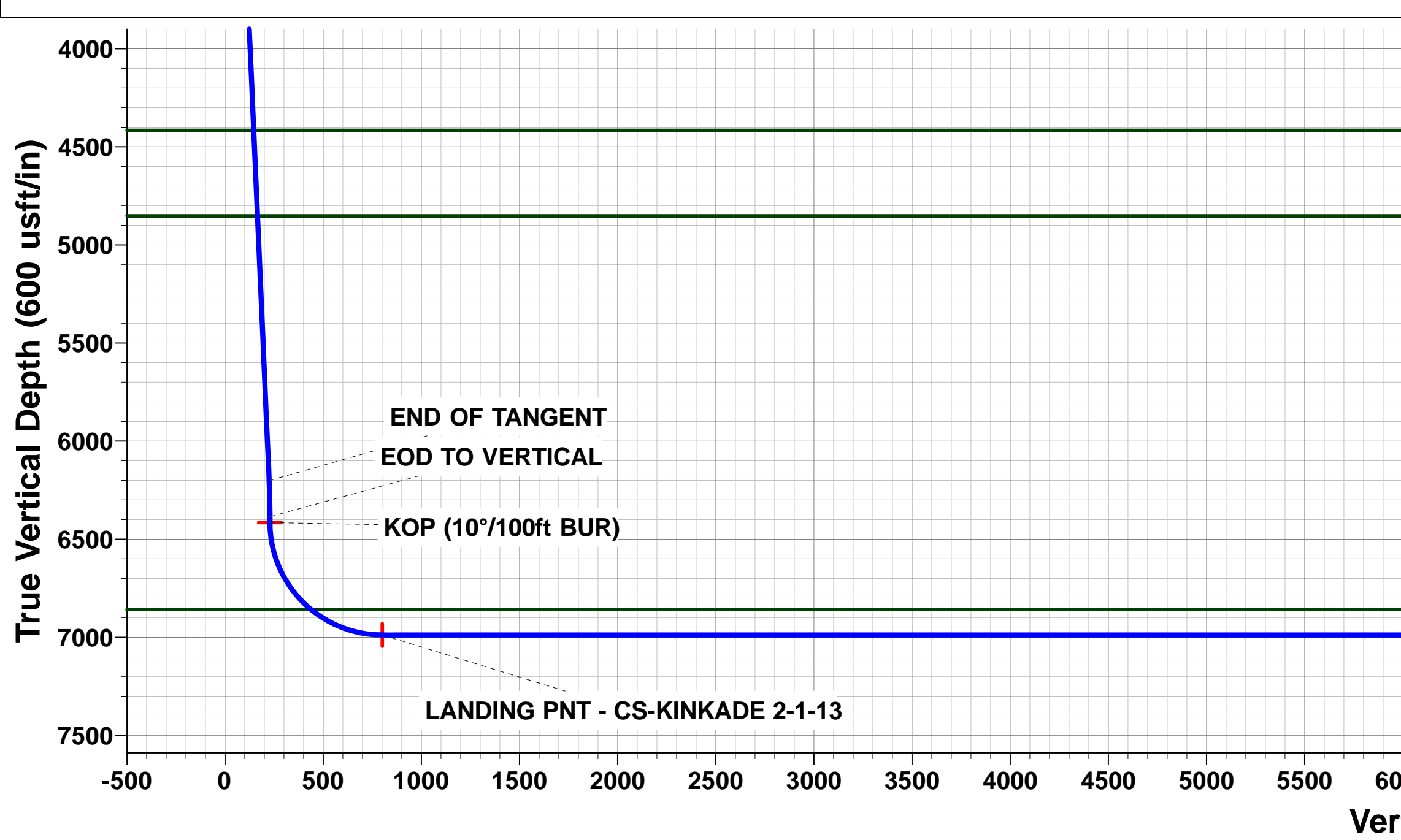
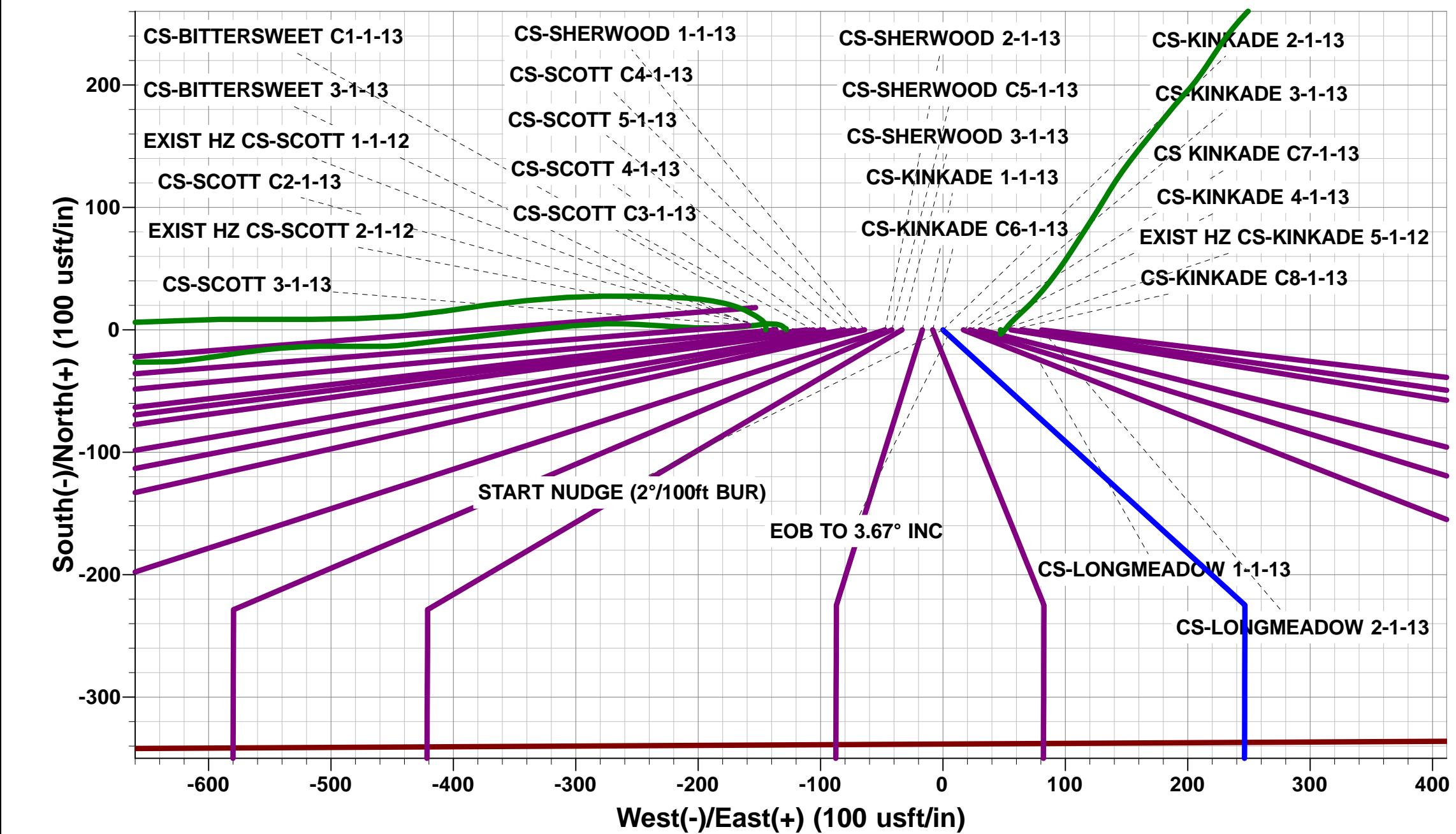
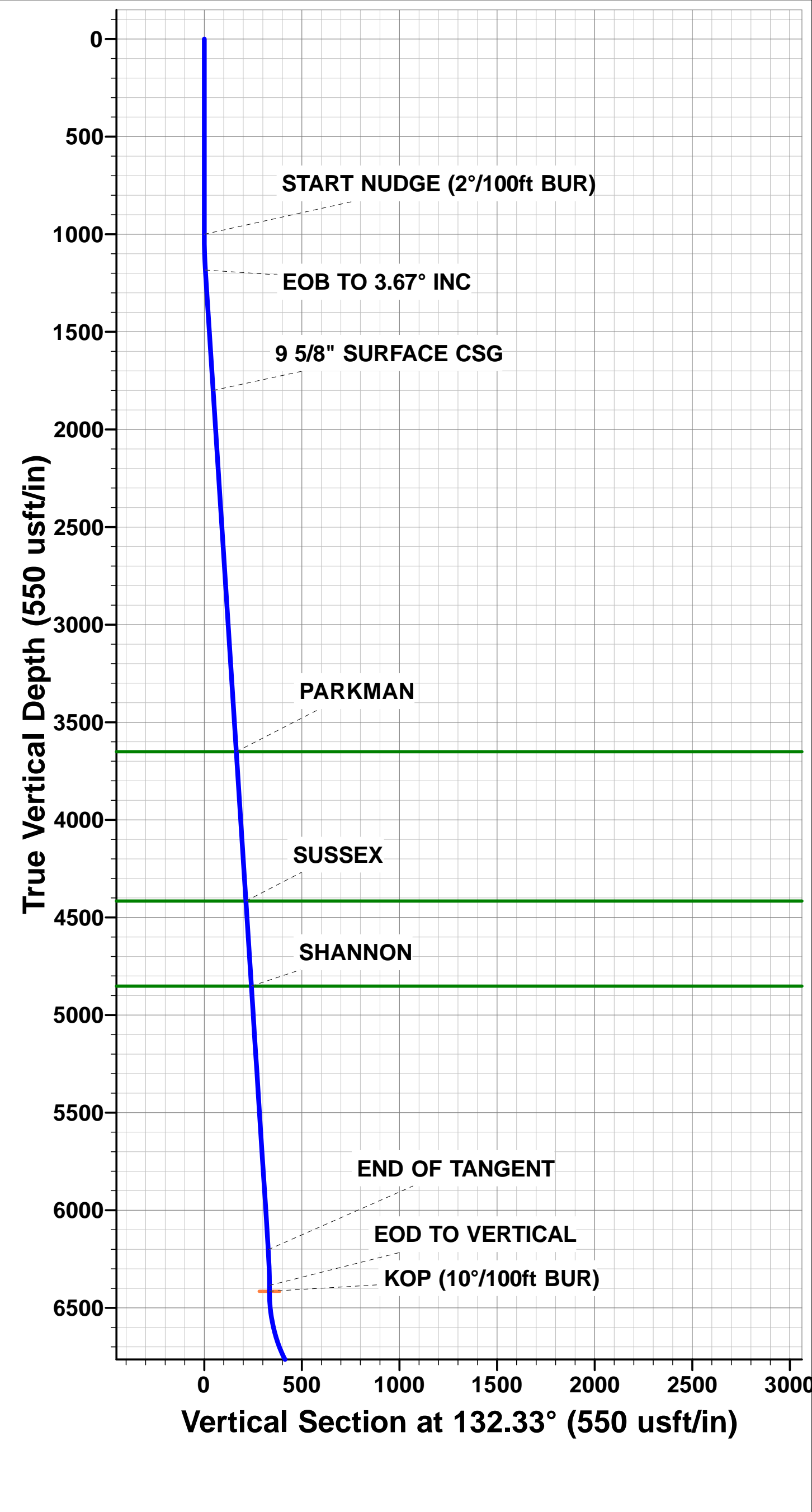
PROPOSED LOCAL COORDINATES:

SHL: 339ft FSL & 1904ft FEL Sec 36

LANDING PNT: 460ft FNL & 1664ft FEL Sec 1

BHL: 2200ft FNL & 1712ft FEL Sec 13

WELLBORE TARGET DETAILS (LAT/LONG)					
Name	TVD	+N/-S	+E/-W	Latitude	Longitude
KOP - CS-KINKADE 2-1-13	6415.0	-224.8	246.8	40.437753	-104.721823
BHL - CS-KINKADE 2-1-13	6988.0	-13792.9	203.3	40.400510	-104.721980
LANDING PNT - CS-KINKADE 2-1-13	6988.0	-797.8	245.0	40.436180	-104.721830



Planning Report



Database:	EDM 5000.1 Single User Db	Local Co-ordinate Reference:	Well CS-KINKADE 2-1-13
Company:	EXTRACTION OIL & GAS	TVD Reference:	KB-EST @ 4680.0usft (SAV 802)
Project:	WELD COUNTY, COLORADO (NAD 83)	MD Reference:	KB-EST @ 4680.0usft (SAV 802)
Site:	SW SE SEC 36 T6N R66W 6th P.M.	North Reference:	True
Well:	CS-KINKADE 2-1-13	Survey Calculation Method:	Minimum Curvature
Wellbore:	ORIGINAL WELLBORE		
Design:	PROPOSAL #1		

Project	WELD COUNTY, COLORADO (NAD 83)		
Map System:	US State Plane 1983	System Datum:	Mean Sea Level
Geo Datum:	North American Datum 1983		
Map Zone:	Colorado Northern Zone		Using geodetic scale factor

Site	SW SE SEC 36 T6N R66W 6th P.M.		
Site Position:		Northing:	1,403,485.52 usft
From:	Lat/Long	Easting:	3,216,213.28 usft
Position Uncertainty:	0.0 usft	Slot Radius:	1.10000ft
		Latitude:	40.438370
		Longitude:	-104.723230
		Grid Convergence:	0.50 °

Well	CS-KINKADE 2-1-13		
Well Position	+N/-S	0.0 usft	Northing:
	+E/-W	144.7 usft	Easting:
Position Uncertainty	0.0 usft	Wellhead Elevation:	usft
		Latitude:	40.438370
		Longitude:	-104.722710
		Ground Level:	4,664.0 usft

Wellbore	ORIGINAL WELLBORE				
Magnetics	Model Name	Sample Date	Declination (°)	Dip Angle (°)	Field Strength (nT)
	IGRF2015	23/06/2015	8.40	66.94	52,644

Design	PROPOSAL #1			
Audit Notes:				
Version:	Phase:	PROTOTYPE	Tie On Depth:	0.0
Vertical Section:	Depth From (TVD) (usft)	+N/-S (usft)	+E/-W (usft)	Direction (°)
	0.0	0.0	0.0	179.16

Plan Sections											
MD (usft)	Inc (°)	Azi (°)	Vertical Depth	SS (usft)	+N/-S (usft)	+E/-W (usft)	Dogleg Rate (°/100usf)	Build Rate (°/100usf)	Turn Rate (°/100usf)	TFO (°)	Target
0.0	0.00	0.00	0.0	-4,680.0	0.0	0.0	0.00	0.00	0.00	0.00	
1,000.0	0.00	0.00	1,000.0	-3,680.0	0.0	0.0	0.00	0.00	0.00	0.00	
1,183.6	3.67	132.33	1,183.5	-3,496.5	-4.0	4.3	2.00	2.00	0.00	132.33	
6,212.0	3.67	132.33	6,201.5	1,521.5	-220.8	242.5	0.00	0.00	0.00	0.00	
6,395.6	0.00	0.00	6,385.0	1,705.0	-224.8	246.8	2.00	-2.00	0.00	180.00	
6,425.6	0.00	0.00	6,415.0	1,735.0	-224.8	246.8	0.00	0.00	0.00	0.00	KOP - CS-KINKADI
7,325.7	90.00	180.18	6,988.0	2,308.0	-797.8	245.0	10.00	10.00	-19.98	180.18	LANDING PNT - CS
20,320.8	90.00	180.18	6,988.0	2,308.0	-13,792.9	203.3	0.00	0.00	0.00	174.16	BHL - CS-KINKADE

Database:	EDM 5000.1 Single User Db	Local Co-ordinate Reference:	Well CS-KINKADE 2-1-13
Company:	EXTRACTION OIL & GAS	TVD Reference:	KB-EST @ 4680.0usft (SAV 802)
Project:	WELD COUNTY, COLORADO (NAD 83)	MD Reference:	KB-EST @ 4680.0usft (SAV 802)
Site:	SW SE SEC 36 T6N R66W 6th P.M.	North Reference:	True
Well:	CS-KINKADE 2-1-13	Survey Calculation Method:	Minimum Curvature
Wellbore:	ORIGINAL WELLBORE		
Design:	PROPOSAL #1		

Planned Survey

MD (usft)	Inc (°)	Azi (°)	TVD (usft)	SS (usft)	+N/-S (usft)	+E/-W (usft)	Vertical Section (usft)	Dogleg Rate (°/100usft)	Build Rate (°/100usft)	Turn Rate (°/100usft)
0.0	0.00	0.00	0.0	4,680.00	0.0	0.0	0.0	0.00	0.00	0.00
100.0	0.00	0.00	100.0	4,580.00	0.0	0.0	0.0	0.00	0.00	0.00
200.0	0.00	0.00	200.0	4,480.00	0.0	0.0	0.0	0.00	0.00	0.00
300.0	0.00	0.00	300.0	4,380.00	0.0	0.0	0.0	0.00	0.00	0.00
400.0	0.00	0.00	400.0	4,280.00	0.0	0.0	0.0	0.00	0.00	0.00
500.0	0.00	0.00	500.0	4,180.00	0.0	0.0	0.0	0.00	0.00	0.00
600.0	0.00	0.00	600.0	4,080.00	0.0	0.0	0.0	0.00	0.00	0.00
700.0	0.00	0.00	700.0	3,980.00	0.0	0.0	0.0	0.00	0.00	0.00
800.0	0.00	0.00	800.0	3,880.00	0.0	0.0	0.0	0.00	0.00	0.00
900.0	0.00	0.00	900.0	3,780.00	0.0	0.0	0.0	0.00	0.00	0.00
START NUDGE (2°/100ft BUR)										
1,000.0	0.00	0.00	1,000.0	3,680.00	0.0	0.0	0.0	0.00	0.00	0.00
1,100.0	2.00	132.33	1,100.0	3,580.02	-1.2	1.3	1.2	2.00	2.00	0.00
EOB TO 3.67° INC										
1,183.6	3.67	132.33	1,183.5	3,496.51	-4.0	4.3	4.0	2.00	2.00	0.00
1,200.0	3.67	132.33	1,199.8	3,480.16	-4.7	5.1	4.7	0.00	0.00	0.00
1,300.0	3.67	132.33	1,299.6	3,380.36	-9.0	9.9	9.1	0.00	0.00	0.00
1,400.0	3.67	132.33	1,399.4	3,280.57	-13.3	14.6	13.5	0.00	0.00	0.00
1,500.0	3.67	132.33	1,499.2	3,180.78	-17.6	19.3	17.9	0.00	0.00	0.00
1,600.0	3.67	132.33	1,599.0	3,080.98	-21.9	24.1	22.3	0.00	0.00	0.00
1,700.0	3.67	132.33	1,698.8	2,981.19	-26.2	28.8	26.7	0.00	0.00	0.00
1,800.0	3.67	132.33	1,798.6	2,881.39	-30.5	33.5	31.0	0.00	0.00	0.00
9 5/8" SURFACE CSG										
1,801.4	3.67	132.33	1,800.0	2,880.00	-30.6	33.6	31.1	0.00	0.00	0.00
1,900.0	3.67	132.33	1,898.4	2,781.60	-34.9	38.3	35.4	0.00	0.00	0.00
2,000.0	3.67	132.33	1,998.2	2,681.80	-39.2	43.0	39.8	0.00	0.00	0.00
2,100.0	3.67	132.33	2,098.0	2,582.01	-43.5	47.7	44.2	0.00	0.00	0.00
2,200.0	3.67	132.33	2,197.8	2,482.21	-47.8	52.5	48.6	0.00	0.00	0.00
2,300.0	3.67	132.33	2,297.6	2,382.42	-52.1	57.2	52.9	0.00	0.00	0.00
2,400.0	3.67	132.33	2,397.4	2,282.62	-56.4	61.9	57.3	0.00	0.00	0.00
2,500.0	3.67	132.33	2,497.2	2,182.83	-60.7	66.7	61.7	0.00	0.00	0.00
2,600.0	3.67	132.33	2,597.0	2,083.03	-65.1	71.4	66.1	0.00	0.00	0.00
2,700.0	3.67	132.33	2,696.8	1,983.24	-69.4	76.2	70.5	0.00	0.00	0.00
2,800.0	3.67	132.33	2,796.6	1,883.44	-73.7	80.9	74.9	0.00	0.00	0.00
2,900.0	3.67	132.33	2,896.3	1,783.65	-78.0	85.6	79.2	0.00	0.00	0.00
3,000.0	3.67	132.33	2,996.1	1,683.86	-82.3	90.4	83.6	0.00	0.00	0.00
3,100.0	3.67	132.33	3,095.9	1,584.06	-86.6	95.1	88.0	0.00	0.00	0.00
3,200.0	3.67	132.33	3,195.7	1,484.27	-90.9	99.8	92.4	0.00	0.00	0.00
3,300.0	3.67	132.33	3,295.5	1,384.47	-95.2	104.6	96.8	0.00	0.00	0.00
3,400.0	3.67	132.33	3,395.3	1,284.68	-99.6	109.3	101.2	0.00	0.00	0.00
3,500.0	3.67	132.33	3,495.1	1,184.88	-103.9	114.0	105.5	0.00	0.00	0.00
3,600.0	3.67	132.33	3,594.9	1,085.09	-108.2	118.8	109.9	0.00	0.00	0.00
PARKMAN										
3,656.2	3.67	132.33	3,651.0	1,029.00	-110.6	121.4	112.4	0.00	0.00	0.00
3,700.0	3.67	132.33	3,694.7	985.29	-112.5	123.5	114.3	0.00	0.00	0.00
3,800.0	3.67	132.33	3,794.5	885.50	-116.8	128.2	118.7	0.00	0.00	0.00
3,900.0	3.67	132.33	3,894.3	785.70	-121.1	133.0	123.1	0.00	0.00	0.00
4,000.0	3.67	132.33	3,994.1	685.91	-125.4	137.7	127.5	0.00	0.00	0.00
4,100.0	3.67	132.33	4,093.9	586.11	-129.7	142.4	131.8	0.00	0.00	0.00
4,200.0	3.67	132.33	4,193.7	486.32	-134.1	147.2	136.2	0.00	0.00	0.00
4,300.0	3.67	132.33	4,293.5	386.52	-138.4	151.9	140.6	0.00	0.00	0.00
4,400.0	3.67	132.33	4,393.3	286.73	-142.7	156.7	145.0	0.00	0.00	0.00
SUSSEX										
4,422.8	3.67	132.33	4,416.0	264.00	-143.7	157.7	146.0	0.00	0.00	0.00

Database:	EDM 5000.1 Single User Db	Local Co-ordinate Reference:	Well CS-KINKADE 2-1-13
Company:	EXTRACTION OIL & GAS	TVD Reference:	KB-EST @ 4680.0usft (SAV 802)
Project:	WELD COUNTY, COLORADO (NAD 83)	MD Reference:	KB-EST @ 4680.0usft (SAV 802)
Site:	SW SE SEC 36 T6N R66W 6th P.M.	North Reference:	True
Well:	CS-KINKADE 2-1-13	Survey Calculation Method:	Minimum Curvature
Wellbore:	ORIGINAL WELLBORE		
Design:	PROPOSAL #1		

Planned Survey

MD (usft)	Inc (°)	Azi (°)	TVD (usft)	SS (usft)	+N/-S (usft)	+E/-W (usft)	Vertical Section (usft)	Dogleg Rate (°/100usft)	Build Rate (°/100usft)	Turn Rate (°/100usft)
4,500.0	3.67	132.33	4,493.1	186.94	-147.0	161.4	149.4	0.00	0.00	0.00
4,600.0	3.67	132.33	4,592.9	87.14	-151.3	166.1	153.7	0.00	0.00	0.00
4,700.0	3.67	132.33	4,692.7	-12.65	-155.6	170.9	158.1	0.00	0.00	0.00
4,800.0	3.67	132.33	4,792.4	-112.45	-159.9	175.6	162.5	0.00	0.00	0.00
SHANNON										
4,859.7	3.67	132.33	4,852.0	-172.00	-162.5	178.4	165.1	0.00	0.00	0.00
4,900.0	3.67	132.33	4,892.2	-212.24	-164.3	180.3	166.9	0.00	0.00	0.00
5,000.0	3.67	132.33	4,992.0	-312.04	-168.6	185.1	171.3	0.00	0.00	0.00
5,100.0	3.67	132.33	5,091.8	-411.83	-172.9	189.8	175.7	0.00	0.00	0.00
5,200.0	3.67	132.33	5,191.6	-511.63	-177.2	194.5	180.0	0.00	0.00	0.00
5,300.0	3.67	132.33	5,291.4	-611.42	-181.5	199.3	184.4	0.00	0.00	0.00
5,400.0	3.67	132.33	5,391.2	-711.22	-185.8	204.0	188.8	0.00	0.00	0.00
5,500.0	3.67	132.33	5,491.0	-811.01	-190.1	208.7	193.2	0.00	0.00	0.00
5,600.0	3.67	132.33	5,590.8	-910.81	-194.4	213.5	197.6	0.00	0.00	0.00
5,700.0	3.67	132.33	5,690.6	-1,010.60	-198.8	218.2	202.0	0.00	0.00	0.00
5,800.0	3.67	132.33	5,790.4	-1,110.40	-203.1	222.9	206.3	0.00	0.00	0.00
5,900.0	3.67	132.33	5,890.2	-1,210.19	-207.4	227.7	210.7	0.00	0.00	0.00
6,000.0	3.67	132.33	5,990.0	-1,309.98	-211.7	232.4	215.1	0.00	0.00	0.00
6,100.0	3.67	132.33	6,089.8	-1,409.78	-216.0	237.1	219.5	0.00	0.00	0.00
6,200.0	3.67	132.33	6,189.6	-1,509.57	-220.3	241.9	223.9	0.00	0.00	0.00
END OF TANGENT										
6,212.0	3.67	132.33	6,201.5	-1,521.51	-220.8	242.5	224.4	0.00	0.00	0.00
6,300.0	1.91	132.33	6,289.4	-1,609.44	-223.7	245.6	227.3	2.00	-2.00	0.00
EOD TO VERTICAL										
6,395.6	0.00	0.00	6,385.0	-1,705.00	-224.8	246.8	228.4	2.00	-2.00	0.00
6,400.0	0.00	0.00	6,389.4	-1,709.42	-224.8	246.8	228.4	0.00	0.00	0.00
KOP (10°/100ft BUR)										
6,425.6	0.00	0.00	6,415.0	-1,735.00	-224.8	246.8	228.4	0.00	0.00	0.00
6,500.0	7.44	180.18	6,489.2	-1,809.21	-229.6	246.8	233.2	10.00	10.00	0.00
6,600.0	17.44	180.18	6,586.7	-1,906.74	-251.1	246.7	254.8	10.00	10.00	0.00
6,700.0	27.44	180.18	6,679.1	-1,999.05	-289.3	246.6	292.9	10.00	10.00	0.00
6,800.0	37.44	180.18	6,763.3	-2,083.34	-342.8	246.4	346.4	10.00	10.00	0.00
6,900.0	47.44	180.18	6,837.0	-2,157.05	-410.2	246.2	413.8	10.00	10.00	0.00
NIOBRARA										
6,932.0	50.64	180.18	6,858.0	-2,178.00	-434.4	246.1	438.0	10.00	10.00	0.00
7,000.0	57.44	180.18	6,897.9	-2,217.93	-489.4	246.0	493.0	10.00	10.00	0.00
7,100.0	67.44	180.18	6,944.1	-2,264.14	-577.9	245.7	581.5	10.00	10.00	0.00
7,200.0	77.44	180.18	6,974.3	-2,294.28	-673.2	245.4	676.7	10.00	10.00	0.00
7,300.0	87.44	180.18	6,987.4	-2,307.43	-772.2	245.0	775.7	10.00	10.00	0.00
LANDING PNT - CS-KINKADE 2-1-13										
7,325.7	90.00	180.18	6,988.0	-2,308.00	-797.8	245.0	801.4	10.00	10.00	0.00
7,400.0	90.00	180.18	6,988.0	-2,307.99	-872.2	244.7	875.7	0.00	0.00	0.00
7,500.0	90.00	180.18	6,988.0	-2,307.99	-972.2	244.4	975.7	0.00	0.00	0.00
7,600.0	90.00	180.18	6,988.0	-2,307.98	-1,072.2	244.1	1,075.6	0.00	0.00	0.00
7,700.0	90.00	180.18	6,988.0	-2,307.97	-1,172.2	243.8	1,175.6	0.00	0.00	0.00
7,800.0	90.00	180.18	6,988.0	-2,307.97	-1,272.2	243.5	1,275.6	0.00	0.00	0.00
7,900.0	90.00	180.18	6,988.0	-2,307.96	-1,372.2	243.1	1,375.6	0.00	0.00	0.00
8,000.0	90.00	180.18	6,988.0	-2,307.95	-1,472.2	242.8	1,475.6	0.00	0.00	0.00
8,100.0	90.00	180.18	6,987.9	-2,307.95	-1,572.2	242.5	1,575.6	0.00	0.00	0.00
8,200.0	90.00	180.18	6,987.9	-2,307.94	-1,672.1	242.2	1,675.5	0.00	0.00	0.00
8,300.0	90.00	180.18	6,987.9	-2,307.94	-1,772.1	241.9	1,775.5	0.00	0.00	0.00
8,400.0	90.00	180.18	6,987.9	-2,307.93	-1,872.1	241.5	1,875.5	0.00	0.00	0.00
8,500.0	90.00	180.18	6,987.9	-2,307.92	-1,972.1	241.2	1,975.5	0.00	0.00	0.00

Planning Report



Database:	EDM 5000.1 Single User Db	Local Co-ordinate Reference:	Well CS-KINKADE 2-1-13
Company:	EXTRACTION OIL & GAS	TVD Reference:	KB-EST @ 4680.0usft (SAV 802)
Project:	WELD COUNTY, COLORADO (NAD 83)	MD Reference:	KB-EST @ 4680.0usft (SAV 802)
Site:	SW SE SEC 36 T6N R66W 6th P.M.	North Reference:	True
Well:	CS-KINKADE 2-1-13	Survey Calculation Method:	Minimum Curvature
Wellbore:	ORIGINAL WELLBORE		
Design:	PROPOSAL #1		

Planned Survey										
MD (usft)	Inc (°)	Azi (°)	TVD (usft)	SS (usft)	+N/-S (usft)	+E/-W (usft)	Vertical Section (usft)	Dogleg Rate (°/100usft)	Build Rate (°/100usft)	Turn Rate (°/100usft)
8,600.0	90.00	180.18	6,987.9	-2,307.92	-2,072.1	240.9	2,075.5	0.00	0.00	0.00
8,700.0	90.00	180.18	6,987.9	-2,307.91	-2,172.1	240.6	2,175.5	0.00	0.00	0.00
8,800.0	90.00	180.18	6,987.9	-2,307.91	-2,272.1	240.3	2,275.4	0.00	0.00	0.00
8,900.0	90.00	180.18	6,987.9	-2,307.90	-2,372.1	239.9	2,375.4	0.00	0.00	0.00
9,000.0	90.00	180.18	6,987.9	-2,307.90	-2,472.1	239.6	2,475.4	0.00	0.00	0.00
9,100.0	90.00	180.18	6,987.9	-2,307.89	-2,572.1	239.3	2,575.4	0.00	0.00	0.00
9,200.0	90.00	180.18	6,987.9	-2,307.89	-2,672.1	239.0	2,675.4	0.00	0.00	0.00
9,300.0	90.00	180.18	6,987.9	-2,307.88	-2,772.1	238.7	2,775.4	0.00	0.00	0.00
9,400.0	90.00	180.18	6,987.9	-2,307.88	-2,872.1	238.3	2,875.3	0.00	0.00	0.00
9,500.0	90.00	180.18	6,987.9	-2,307.87	-2,972.1	238.0	2,975.3	0.00	0.00	0.00
9,600.0	90.00	180.18	6,987.9	-2,307.87	-3,072.1	237.7	3,075.3	0.00	0.00	0.00
9,700.0	90.00	180.18	6,987.9	-2,307.86	-3,172.1	237.4	3,175.3	0.00	0.00	0.00
9,800.0	90.00	180.18	6,987.9	-2,307.86	-3,272.1	237.1	3,275.3	0.00	0.00	0.00
9,900.0	90.00	180.18	6,987.9	-2,307.85	-3,372.1	236.7	3,375.3	0.00	0.00	0.00
10,000.0	90.00	180.18	6,987.8	-2,307.85	-3,472.1	236.4	3,475.2	0.00	0.00	0.00
10,100.0	90.00	180.18	6,987.8	-2,307.85	-3,572.1	236.1	3,575.2	0.00	0.00	0.00
10,200.0	90.00	180.18	6,987.8	-2,307.84	-3,672.1	235.8	3,675.2	0.00	0.00	0.00
10,300.0	90.00	180.18	6,987.8	-2,307.84	-3,772.1	235.5	3,775.2	0.00	0.00	0.00
10,400.0	90.00	180.18	6,987.8	-2,307.83	-3,872.1	235.1	3,875.2	0.00	0.00	0.00
10,500.0	90.00	180.18	6,987.8	-2,307.83	-3,972.1	234.8	3,975.2	0.00	0.00	0.00
10,600.0	90.00	180.18	6,987.8	-2,307.83	-4,072.1	234.5	4,075.2	0.00	0.00	0.00
10,700.0	90.00	180.18	6,987.8	-2,307.82	-4,172.1	234.2	4,175.1	0.00	0.00	0.00
10,800.0	90.00	180.18	6,987.8	-2,307.82	-4,272.1	233.9	4,275.1	0.00	0.00	0.00
10,900.0	90.00	180.18	6,987.8	-2,307.82	-4,372.1	233.5	4,375.1	0.00	0.00	0.00
11,000.0	90.00	180.18	6,987.8	-2,307.81	-4,472.1	233.2	4,475.1	0.00	0.00	0.00
11,100.0	90.00	180.18	6,987.8	-2,307.81	-4,572.1	232.9	4,575.1	0.00	0.00	0.00
11,200.0	90.00	180.18	6,987.8	-2,307.81	-4,672.1	232.6	4,675.1	0.00	0.00	0.00
11,300.0	90.00	180.18	6,987.8	-2,307.80	-4,772.1	232.2	4,775.0	0.00	0.00	0.00
11,400.0	90.00	180.18	6,987.8	-2,307.80	-4,872.1	231.9	4,875.0	0.00	0.00	0.00
11,500.0	90.00	180.18	6,987.8	-2,307.80	-4,972.1	231.6	4,975.0	0.00	0.00	0.00
11,600.0	90.00	180.18	6,987.8	-2,307.80	-5,072.1	231.3	5,075.0	0.00	0.00	0.00
11,700.0	90.00	180.18	6,987.8	-2,307.79	-5,172.1	231.0	5,175.0	0.00	0.00	0.00
11,800.0	90.00	180.18	6,987.8	-2,307.79	-5,272.1	230.6	5,275.0	0.00	0.00	0.00
11,900.0	90.00	180.18	6,987.8	-2,307.79	-5,372.1	230.3	5,374.9	0.00	0.00	0.00
12,000.0	90.00	180.18	6,987.8	-2,307.79	-5,472.1	230.0	5,474.9	0.00	0.00	0.00
12,100.0	90.00	180.18	6,987.8	-2,307.79	-5,572.1	229.7	5,574.9	0.00	0.00	0.00
12,200.0	90.00	180.18	6,987.8	-2,307.78	-5,672.1	229.4	5,674.9	0.00	0.00	0.00
12,300.0	90.00	180.18	6,987.8	-2,307.78	-5,772.1	229.0	5,774.9	0.00	0.00	0.00
12,400.0	90.00	180.18	6,987.8	-2,307.78	-5,872.1	228.7	5,874.9	0.00	0.00	0.00
12,500.0	90.00	180.18	6,987.8	-2,307.78	-5,972.1	228.4	5,974.8	0.00	0.00	0.00
12,600.0	90.00	180.18	6,987.8	-2,307.78	-6,072.1	228.1	6,074.8	0.00	0.00	0.00
12,700.0	90.00	180.18	6,987.8	-2,307.78	-6,172.1	227.8	6,174.8	0.00	0.00	0.00
12,800.0	90.00	180.18	6,987.8	-2,307.78	-6,272.1	227.4	6,274.8	0.00	0.00	0.00
12,900.0	90.00	180.18	6,987.8	-2,307.77	-6,372.1	227.1	6,374.8	0.00	0.00	0.00
13,000.0	90.00	180.18	6,987.8	-2,307.77	-6,472.1	226.8	6,474.8	0.00	0.00	0.00
13,100.0	90.00	180.18	6,987.8	-2,307.77	-6,572.1	226.5	6,574.7	0.00	0.00	0.00
13,200.0	90.00	180.18	6,987.8	-2,307.77	-6,672.1	226.2	6,674.7	0.00	0.00	0.00
13,300.0	90.00	180.18	6,987.8	-2,307.77	-6,772.1	225.8	6,774.7	0.00	0.00	0.00
13,400.0	90.00	180.18	6,987.8	-2,307.77	-6,872.1	225.5	6,874.7	0.00	0.00	0.00
13,500.0	90.00	180.18	6,987.8	-2,307.77	-6,972.1	225.2	6,974.7	0.00	0.00	0.00
13,600.0	90.00	180.18	6,987.8	-2,307.77	-7,072.1	224.9	7,074.7	0.00	0.00	0.00
13,700.0	90.00	180.18	6,987.8	-2,307.77	-7,172.1	224.6	7,174.7	0.00	0.00	0.00
13,800.0	90.00	180.18	6,987.8	-2,307.77	-7,272.1	224.2	7,274.6	0.00	0.00	0.00
13,900.0	90.00	180.18	6,987.8	-2,307.77	-7,372.1	223.9	7,374.6	0.00	0.00	0.00

Planning Report



Database:	EDM 5000.1 Single User Db	Local Co-ordinate Reference:	Well CS-KINKADE 2-1-13
Company:	EXTRACTION OIL & GAS	TVD Reference:	KB-EST @ 4680.0usft (SAV 802)
Project:	WELD COUNTY, COLORADO (NAD 83)	MD Reference:	KB-EST @ 4680.0usft (SAV 802)
Site:	SW SE SEC 36 T6N R66W 6th P.M.	North Reference:	True
Well:	CS-KINKADE 2-1-13	Survey Calculation Method:	Minimum Curvature
Wellbore:	ORIGINAL WELLBORE		
Design:	PROPOSAL #1		

Planned Survey										
MD (usft)	Inc (°)	Azi (°)	TVD (usft)	SS (usft)	+N/-S (usft)	+E/-W (usft)	Vertical Section (usft)	Dogleg Rate (°/100usft)	Build Rate (°/100usft)	Turn Rate (°/100usft)
14,000.0	90.00	180.18	6,987.8	-2,307.77	-7,472.1	223.6	7,474.6	0.00	0.00	0.00
14,100.0	90.00	180.18	6,987.8	-2,307.77	-7,572.1	223.3	7,574.6	0.00	0.00	0.00
14,200.0	90.00	180.18	6,987.8	-2,307.77	-7,672.1	223.0	7,674.6	0.00	0.00	0.00
14,300.0	90.00	180.18	6,987.8	-2,307.77	-7,772.1	222.6	7,774.6	0.00	0.00	0.00
14,400.0	90.00	180.18	6,987.8	-2,307.77	-7,872.1	222.3	7,874.5	0.00	0.00	0.00
14,500.0	90.00	180.18	6,987.8	-2,307.77	-7,972.1	222.0	7,974.5	0.00	0.00	0.00
14,600.0	90.00	180.18	6,987.8	-2,307.77	-8,072.1	221.7	8,074.5	0.00	0.00	0.00
14,700.0	90.00	180.18	6,987.8	-2,307.77	-8,172.1	221.4	8,174.5	0.00	0.00	0.00
14,800.0	90.00	180.18	6,987.8	-2,307.78	-8,272.1	221.0	8,274.5	0.00	0.00	0.00
14,900.0	90.00	180.18	6,987.8	-2,307.78	-8,372.1	220.7	8,374.5	0.00	0.00	0.00
15,000.0	90.00	180.18	6,987.8	-2,307.78	-8,472.1	220.4	8,474.4	0.00	0.00	0.00
15,100.0	90.00	180.18	6,987.8	-2,307.78	-8,572.1	220.1	8,574.4	0.00	0.00	0.00
15,200.0	90.00	180.18	6,987.8	-2,307.78	-8,672.1	219.8	8,674.4	0.00	0.00	0.00
15,300.0	90.00	180.18	6,987.8	-2,307.78	-8,772.1	219.4	8,774.4	0.00	0.00	0.00
15,400.0	90.00	180.18	6,987.8	-2,307.78	-8,872.1	219.1	8,874.4	0.00	0.00	0.00
15,500.0	90.00	180.18	6,987.8	-2,307.79	-8,972.1	218.8	8,974.4	0.00	0.00	0.00
15,600.0	90.00	180.18	6,987.8	-2,307.79	-9,072.1	218.5	9,074.3	0.00	0.00	0.00
15,700.0	90.00	180.18	6,987.8	-2,307.79	-9,172.1	218.1	9,174.3	0.00	0.00	0.00
15,800.0	90.00	180.18	6,987.8	-2,307.79	-9,272.1	217.8	9,274.3	0.00	0.00	0.00
15,900.0	90.00	180.18	6,987.8	-2,307.79	-9,372.1	217.5	9,374.3	0.00	0.00	0.00
16,000.0	90.00	180.18	6,987.8	-2,307.80	-9,472.1	217.2	9,474.3	0.00	0.00	0.00
16,100.0	90.00	180.18	6,987.8	-2,307.80	-9,572.1	216.9	9,574.3	0.00	0.00	0.00
16,200.0	90.00	180.18	6,987.8	-2,307.80	-9,672.1	216.5	9,674.2	0.00	0.00	0.00
16,300.0	90.00	180.18	6,987.8	-2,307.80	-9,772.1	216.2	9,774.2	0.00	0.00	0.00
16,400.0	90.00	180.18	6,987.8	-2,307.81	-9,872.1	215.9	9,874.2	0.00	0.00	0.00
16,500.0	90.00	180.18	6,987.8	-2,307.81	-9,972.1	215.6	9,974.2	0.00	0.00	0.00
16,600.0	90.00	180.18	6,987.8	-2,307.81	-10,072.1	215.3	10,074.2	0.00	0.00	0.00
16,700.0	90.00	180.18	6,987.8	-2,307.81	-10,172.1	214.9	10,174.2	0.00	0.00	0.00
16,800.0	90.00	180.18	6,987.8	-2,307.82	-10,272.1	214.6	10,274.2	0.00	0.00	0.00
16,900.0	90.00	180.18	6,987.8	-2,307.82	-10,372.1	214.3	10,374.1	0.00	0.00	0.00
17,000.0	90.00	180.18	6,987.8	-2,307.82	-10,472.1	214.0	10,474.1	0.00	0.00	0.00
17,100.0	90.00	180.18	6,987.8	-2,307.83	-10,572.1	213.7	10,574.1	0.00	0.00	0.00
17,200.0	90.00	180.18	6,987.8	-2,307.83	-10,672.1	213.3	10,674.1	0.00	0.00	0.00
17,300.0	90.00	180.18	6,987.8	-2,307.84	-10,772.1	213.0	10,774.1	0.00	0.00	0.00
17,400.0	90.00	180.18	6,987.8	-2,307.84	-10,872.1	212.7	10,874.1	0.00	0.00	0.00
17,500.0	90.00	180.18	6,987.8	-2,307.84	-10,972.1	212.4	10,974.0	0.00	0.00	0.00
17,600.0	90.00	180.18	6,987.8	-2,307.85	-11,072.1	212.1	11,074.0	0.00	0.00	0.00
17,700.0	90.00	180.18	6,987.9	-2,307.85	-11,172.1	211.7	11,174.0	0.00	0.00	0.00
17,800.0	90.00	180.18	6,987.9	-2,307.86	-11,272.1	211.4	11,274.0	0.00	0.00	0.00
17,900.0	90.00	180.18	6,987.9	-2,307.86	-11,372.1	211.1	11,374.0	0.00	0.00	0.00
18,000.0	90.00	180.18	6,987.9	-2,307.86	-11,472.1	210.8	11,474.0	0.00	0.00	0.00
18,100.0	90.00	180.18	6,987.9	-2,307.87	-11,572.1	210.4	11,573.9	0.00	0.00	0.00
18,200.0	90.00	180.18	6,987.9	-2,307.87	-11,672.1	210.1	11,673.9	0.00	0.00	0.00
18,300.0	90.00	180.18	6,987.9	-2,307.88	-11,772.1	209.8	11,773.9	0.00	0.00	0.00
18,400.0	90.00	180.18	6,987.9	-2,307.88	-11,872.1	209.5	11,873.9	0.00	0.00	0.00
18,500.0	90.00	180.18	6,987.9	-2,307.89	-11,972.1	209.2	11,973.9	0.00	0.00	0.00
18,600.0	90.00	180.18	6,987.9	-2,307.89	-12,072.1	208.8	12,073.9	0.00	0.00	0.00
18,700.0	90.00	180.18	6,987.9	-2,307.90	-12,172.1	208.5	12,173.8	0.00	0.00	0.00
18,800.0	90.00	180.18	6,987.9	-2,307.90	-12,272.1	208.2	12,273.8	0.00	0.00	0.00
18,900.0	90.00	180.18	6,987.9	-2,307.91	-12,372.1	207.9	12,373.8	0.00	0.00	0.00
19,000.0	90.00	180.18	6,987.9	-2,307.92	-12,472.1	207.6	12,473.8	0.00	0.00	0.00
19,100.0	90.00	180.18	6,987.9	-2,307.92	-12,572.1	207.2	12,573.8	0.00	0.00	0.00
19,200.0	90.00	180.18	6,987.9	-2,307.93	-12,672.1	206.9	12,673.8	0.00	0.00	0.00
19,300.0	90.00	180.18	6,987.9	-2,307.93	-12,772.1	206.6	12,773.8	0.00	0.00	0.00

Database:	EDM 5000.1 Single User Db	Local Co-ordinate Reference:	Well CS-KINKADE 2-1-13
Company:	EXTRACTION OIL & GAS	TVD Reference:	KB-EST @ 4680.0usft (SAV 802)
Project:	WELD COUNTY, COLORADO (NAD 83)	MD Reference:	KB-EST @ 4680.0usft (SAV 802)
Site:	SW SE SEC 36 T6N R66W 6th P.M.	North Reference:	True
Well:	CS-KINKADE 2-1-13	Survey Calculation Method:	Minimum Curvature
Wellbore:	ORIGINAL WELLBORE		
Design:	PROPOSAL #1		

Planned Survey

MD (usft)	Inc (°)	Azi (°)	TVD (usft)	SS (usft)	+N/-S (usft)	+E/-W (usft)	Vertical Section (usft)	Dogleg Rate (°/100usft)	Build Rate (°/100usft)	Turn Rate (°/100usft)
19,400.0	90.00	180.18	6,987.9	-2,307.94	-12,872.1	206.3	12,873.7	0.00	0.00	0.00
19,500.0	90.00	180.18	6,987.9	-2,307.95	-12,972.1	206.0	12,973.7	0.00	0.00	0.00
19,600.0	90.00	180.18	6,988.0	-2,307.95	-13,072.1	205.6	13,073.7	0.00	0.00	0.00
19,700.0	90.00	180.18	6,988.0	-2,307.96	-13,172.1	205.3	13,173.7	0.00	0.00	0.00
19,800.0	90.00	180.18	6,988.0	-2,307.96	-13,272.1	205.0	13,273.7	0.00	0.00	0.00
19,900.0	90.00	180.18	6,988.0	-2,307.97	-13,372.1	204.7	13,373.7	0.00	0.00	0.00
20,000.0	90.00	180.18	6,988.0	-2,307.98	-13,472.1	204.3	13,473.6	0.00	0.00	0.00
20,100.0	90.00	180.18	6,988.0	-2,307.98	-13,572.1	204.0	13,573.6	0.00	0.00	0.00
20,200.0	90.00	180.18	6,988.0	-2,307.99	-13,672.1	203.7	13,673.6	0.00	0.00	0.00
20,300.0	90.00	180.18	6,988.0	-2,308.00	-13,772.1	203.4	13,773.6	0.00	0.00	0.00
BHL - CS-KINKADE 2-1-13										
20,320.8	90.00	180.18	6,988.0	-2,308.00	-13,792.9	203.3	13,794.4	0.00	0.00	0.00

Formations

MD (usft)	TVD (usft)	Name	Lithology	Dip (°)	Dip Direction (°)
3,656.2	3,651.0	PARKMAN			
4,422.8	4,416.0	SUSSEX			
4,859.7	4,852.0	SHANNON			
6,932.0	6,858.0	NIOBRARA			

Plan Annotations

MD (usft)	TVD (usft)	Local Coordinates		Comment
		+N/-S (usft)	+E/-W (usft)	
1,000.0	1,000.0	0.0	0.0	START NUDGE (2°/100ft BUR)
1,183.6	1,183.5	-4.0	4.3	EOB TO 3.67° INC
1,801.4	1,800.0	-30.6	33.6	9 5/8" SURFACE CSG
6,212.0	6,201.5	-220.8	242.5	END OF TANGENT
6,395.6	6,385.0	-224.8	246.8	EOD TO VERTICAL
6,425.6	6,415.0	-224.8	246.8	KOP (10°/100ft BUR)
7,325.7	6,988.0	-797.8	245.0	LANDING PNT - CS-KINKADE 2-1-13
20,320.8	6,988.0	-13,792.9	203.3	BHL - CS-KINKADE 2-1-13