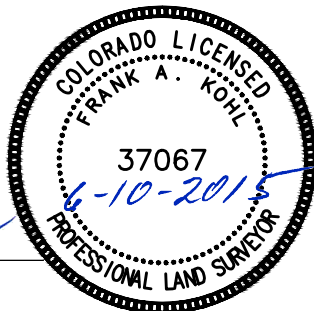


LAND SURVEYOR'S CERTIFICATION

LAMP, RYNEARSON & ASSOCIATES, INC., OF FT. COLLINS, COLORADO HAS IN ACCORDANCE WITH A REQUEST FROM DUSTIN DYK AT EXTRACTION OIL & GAS, DETERMINED THE SURFACE LOCATION OF THE WELL DESIGNATED AS CS-KINKADE 4-1-13 TO BE 338' FROM THE SOUTH LINE AND 1872' FROM THE EAST LINE OF SECTION 36, TOWNSHIP 6 NORTH, RANGE 66 WEST OF THE 6TH P.M., WELD COUNTY, COLORADO.



0 1000
 SCALE: 1"= 1000'
 U.S. SURVEY FEET

FRANK A. KOHL
 COLORADO PLS 37067
 DATE OF SURVEY: 8/19/2010 (SECTION CONTROL)
 DATE OF SURVEY: 3/5/2012 (WELL LOCATION)

- LEGEND**
- ⊕ ALIQUOT CORNER A.C. ALUMINUM CAP
 - ⊙ BOTTOM HOLE R.B. RANGE BOX
 - ⊙ PROPOSED WELL

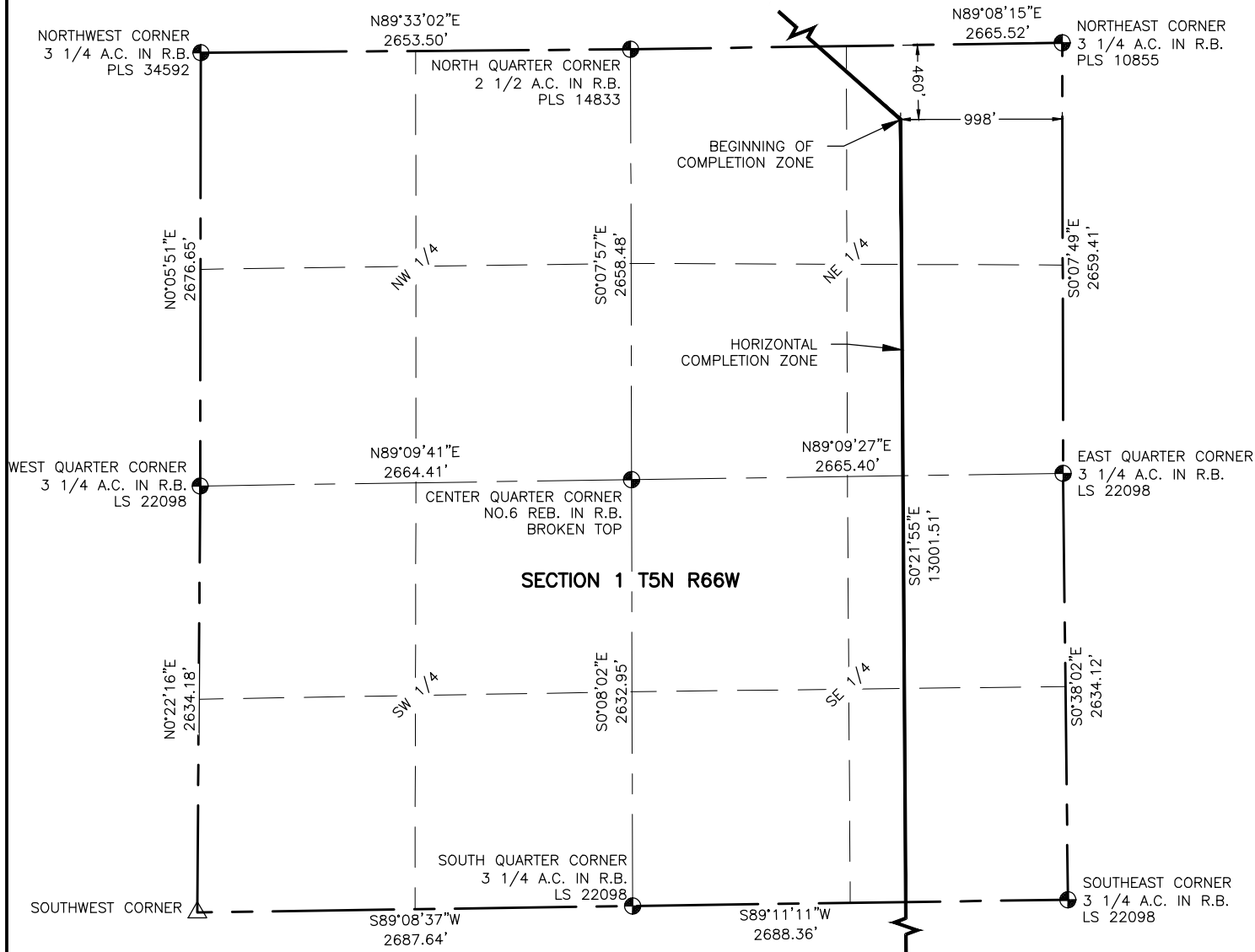


LAMP RYNEARSON
 & ASSOCIATES

4715 Innovation Drive 970.226.0342 | P
 Fort Collins, CO 80525 970.226.0879 | F
 www.LRA-Inc.com

Proposed Well Location Exhibit
 CS-Kinkade 4-1-13
 1 of 4

drawn by	date	cogcc id	project - task number	book and page	surface - location
KJW	6/12/15	430474	0210012.00-502	MR-01 5-6	SW/4 SE/4 SEC 36 T6N R66W
path\filename P:_Engineering\0210012 MRI C Street\DRAWINGS\EXHIBITS\0210012EXWPP.dwg					



NOTES:

- DISTANCES ARE MEASURED PERPENDICULAR TO NEAREST SECTION LINE AND ARE SHOWN ON THE SAME SIDE OF THE SECTION LINE WHERE THE WELL IS LOCATED.
- THIS MAP DOES NOT REPRESENT A MONUMENTED BOUNDARY SURVEY. SIXTEENTH CORNER LOCATIONS ARE COMPUTED, UNLESS OTHERWISE NOTED.
- BOTTOM HOLE LOCATIONS AND HORIZONTAL COMPLETION ZONE PROVIDED BY OTHERS.

LEGEND

- ALIQUOT CORNER
- BOTTOM HOLE
- COMPUTED ALIQUOT CORNERS FROM MONUMENT ACCESSORIES
- PROPOSED WELL
- A.C. ALUMINUM CAP
- R.B. RANGE BOX



0 1000
SCALE: 1"= 1000'
U.S. SURVEY FEET



LAMP RYNEARSON
& ASSOCIATES

4715 Innovation Drive 970.226.0342 | P
Fort Collins, CO 80525 970.226.0879 | F
www.LRA-Inc.com

Proposed Well Location Exhibit
CS-Kinkade 4-1-13
2 of 4

drawn by
KJW

date
6/12/15

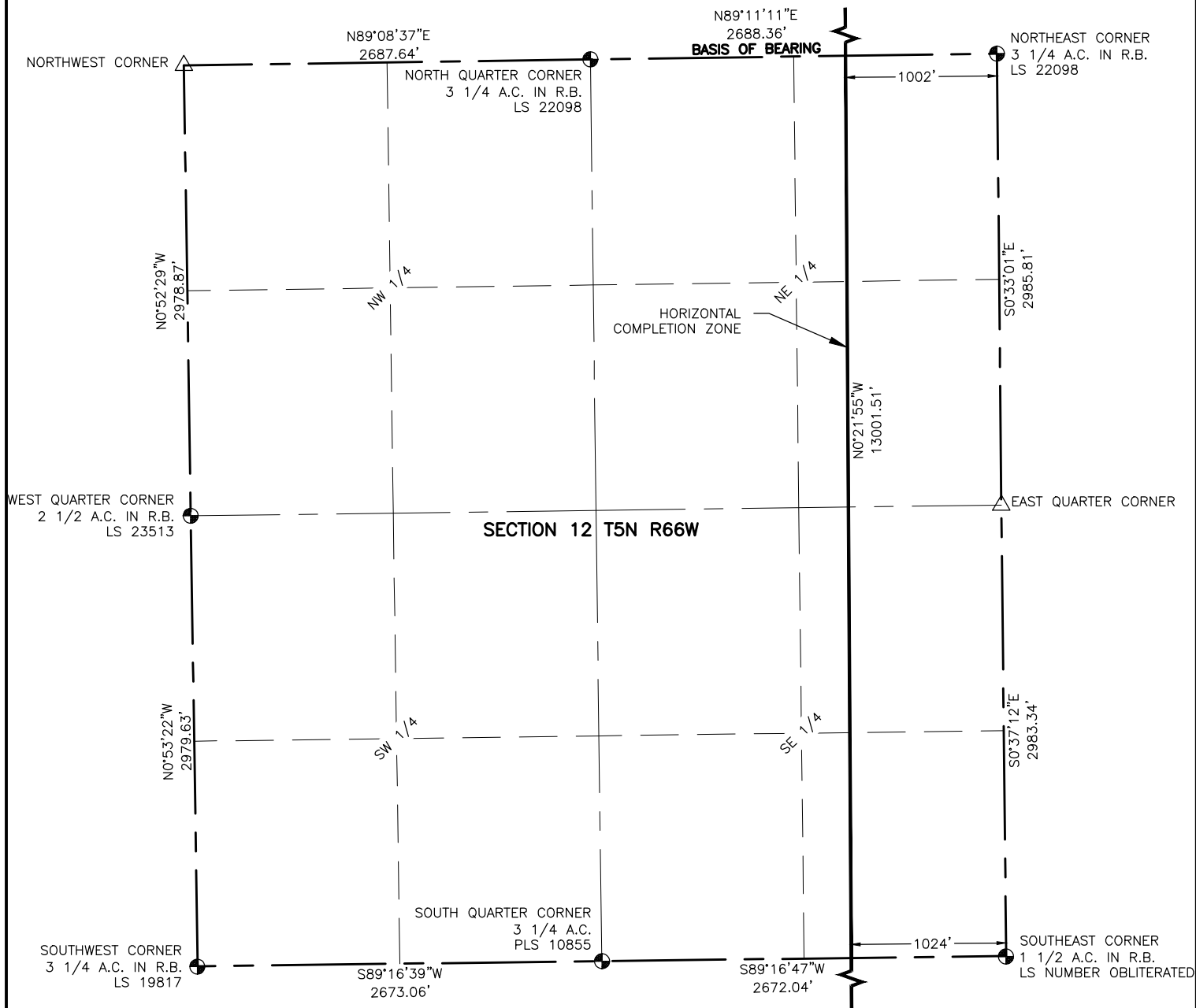
cogcc id
430474

project - task number
0210012.00-502

book and page
MR-01 5-6

surface - location
SW/4 SE/4 SEC 36 T6N R66W

path\filename P:_Engineering\0210012 MRI C Street\DRAWINGS\EXHIBITS\0210012EXWPPA.dwg



NOTES:

- DISTANCES ARE MEASURED PERPENDICULAR TO NEAREST SECTION LINE AND ARE SHOWN ON THE SAME SIDE OF THE SECTION LINE WHERE THE WELL IS LOCATED.
- THIS MAP DOES NOT REPRESENT A MONUMENTED BOUNDARY SURVEY. SIXTEENTH CORNER LOCATIONS ARE COMPUTED, UNLESS OTHERWISE NOTED.
- BOTTOM HOLE LOCATIONS AND HORIZONTAL COMPLETION ZONE PROVIDED BY OTHERS.

LEGEND

- ALIQUOT CORNER
- BOTTOM HOLE
- COMPUTED ALIQUOT CORNERS FROM MONUMENT ACCESSORIES
- PROPOSED WELL
- A.C. ALUMINUM CAP
- R.B. RANGE BOX



0 1000
SCALE: 1"= 1000'
U.S. SURVEY FEET



LAMP RYNEARSON
& ASSOCIATES

4715 Innovation Drive 970.226.0342 | P
Fort Collins, CO 80525 970.226.0879 | F
www.LRA-Inc.com

Proposed Well Location Exhibit
CS-Kinkade 4-1-13
3 of 4

drawn by
KJW

date
6/12/15

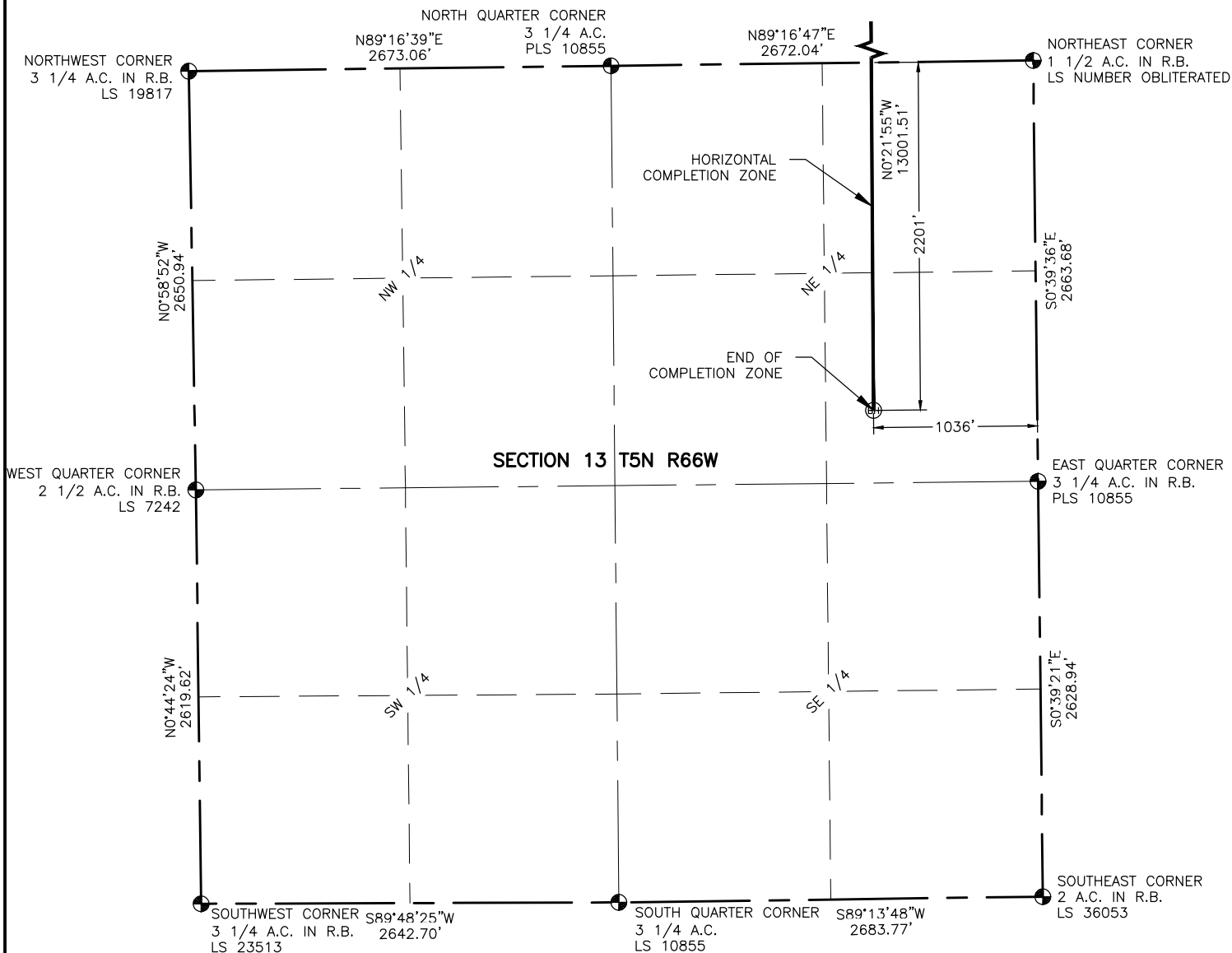
cogcc id
430474

project - task number
0210012.00-502

book and page
MR-01 5-6

surface - location
SW/4 SE/4 SEC 36 T6N R66W

path\filename P:_Engineering\0210012 MRI C Street\DRAWINGS\EXHIBITS\0210012EXWPPB.dwg

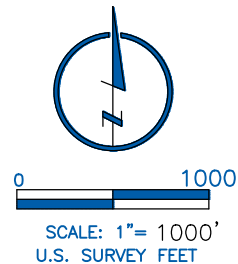


NOTES:

- DISTANCES ARE MEASURED PERPENDICULAR TO NEAREST SECTION LINE AND ARE SHOWN ON THE SAME SIDE OF THE SECTION LINE WHERE THE WELL IS LOCATED.
- THIS MAP DOES NOT REPRESENT A MONUMENTED BOUNDARY SURVEY. SIXTEENTH CORNER LOCATIONS ARE COMPUTED, UNLESS OTHERWISE NOTED.
- BOTTOM HOLE LOCATIONS AND HORIZONTAL COMPLETION ZONE PROVIDED BY OTHERS.

LEGEND

- ALIQUOT CORNER
- BOTTOM HOLE
- COMPUTED ALIQUOT CORNERS FROM MONUMENT ACCESSORIES
- PROPOSED WELL
- A.C. ALUMINUM CAP
- R.B. RANGE BOX



LAMP RYNEARSON
& ASSOCIATES

4715 Innovation Drive 970.226.0342 | P
Fort Collins, CO 80525 970.226.0879 | F
www.LRA-Inc.com

Proposed Well Location Exhibit
CS-Kinkade 4-1-13
4 of 4

drawn by
KJW

date
6/12/15

cogcc id
430474

project - task number
0210012.00-502

book and page
MR-01 5-6

surface - location
SW/4 SE/4 SEC 36 T6N R66W

path\filename P:_Engineering\0210012 MRI C Street\DRAWINGS\EXHIBITS\0210012EXWPCC.dwg