

# **EXTRACTION OIL & GAS**

**WELD COUNTY, COLORADO (NAD 83)**

**SW SE SEC 36 T6N R66W 6th P.M.**

**CS-KINKADE 4-1-13**

**ORIGINAL WELLBORE**

**27 June, 2015**

**Plan: PROPOSAL #1**



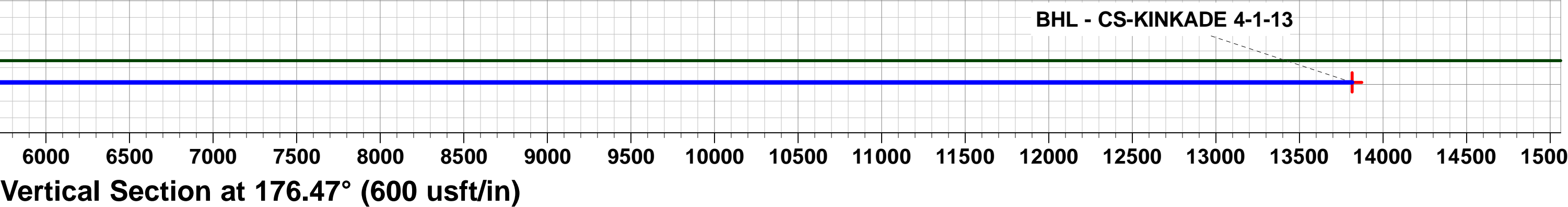
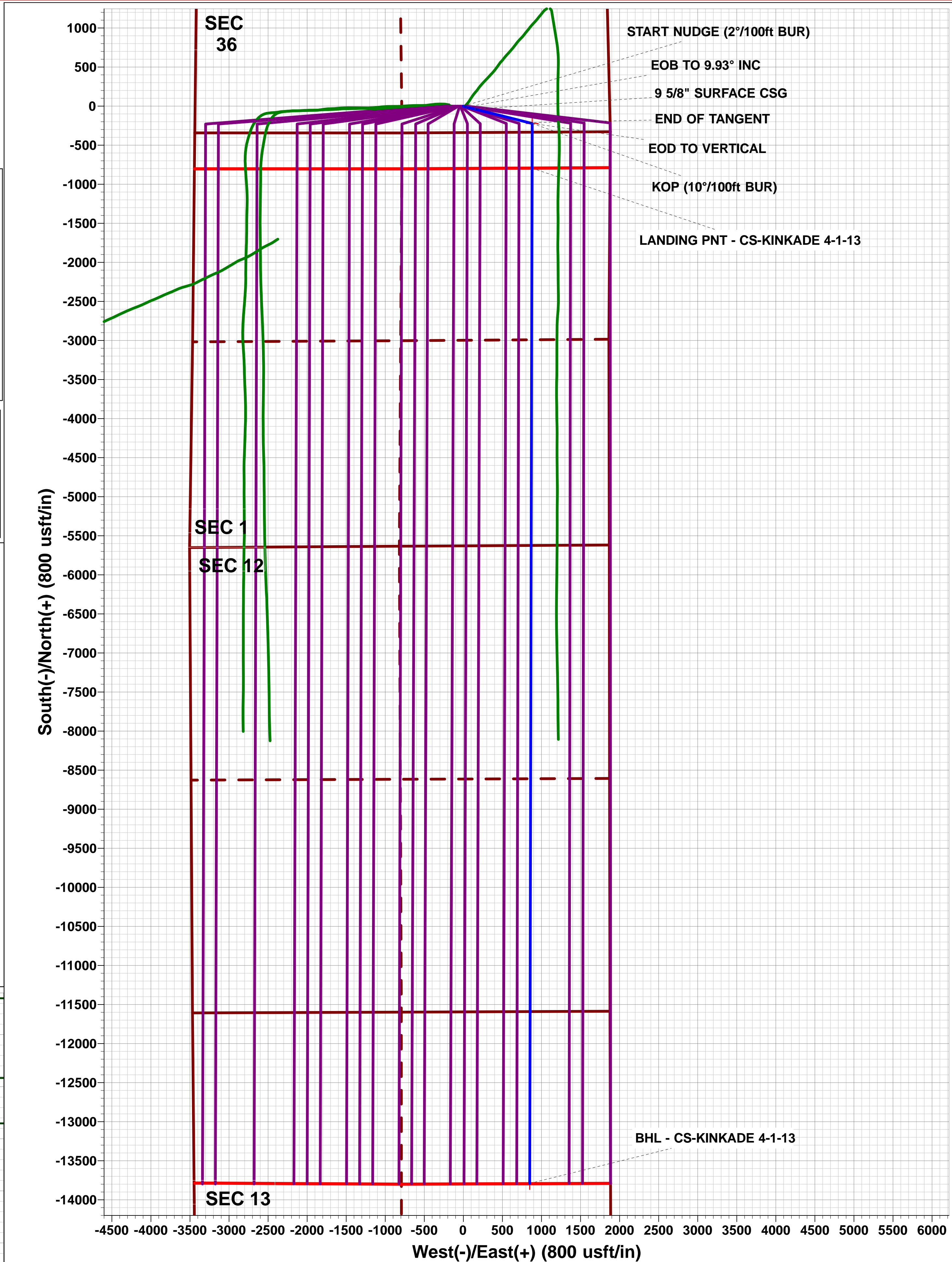
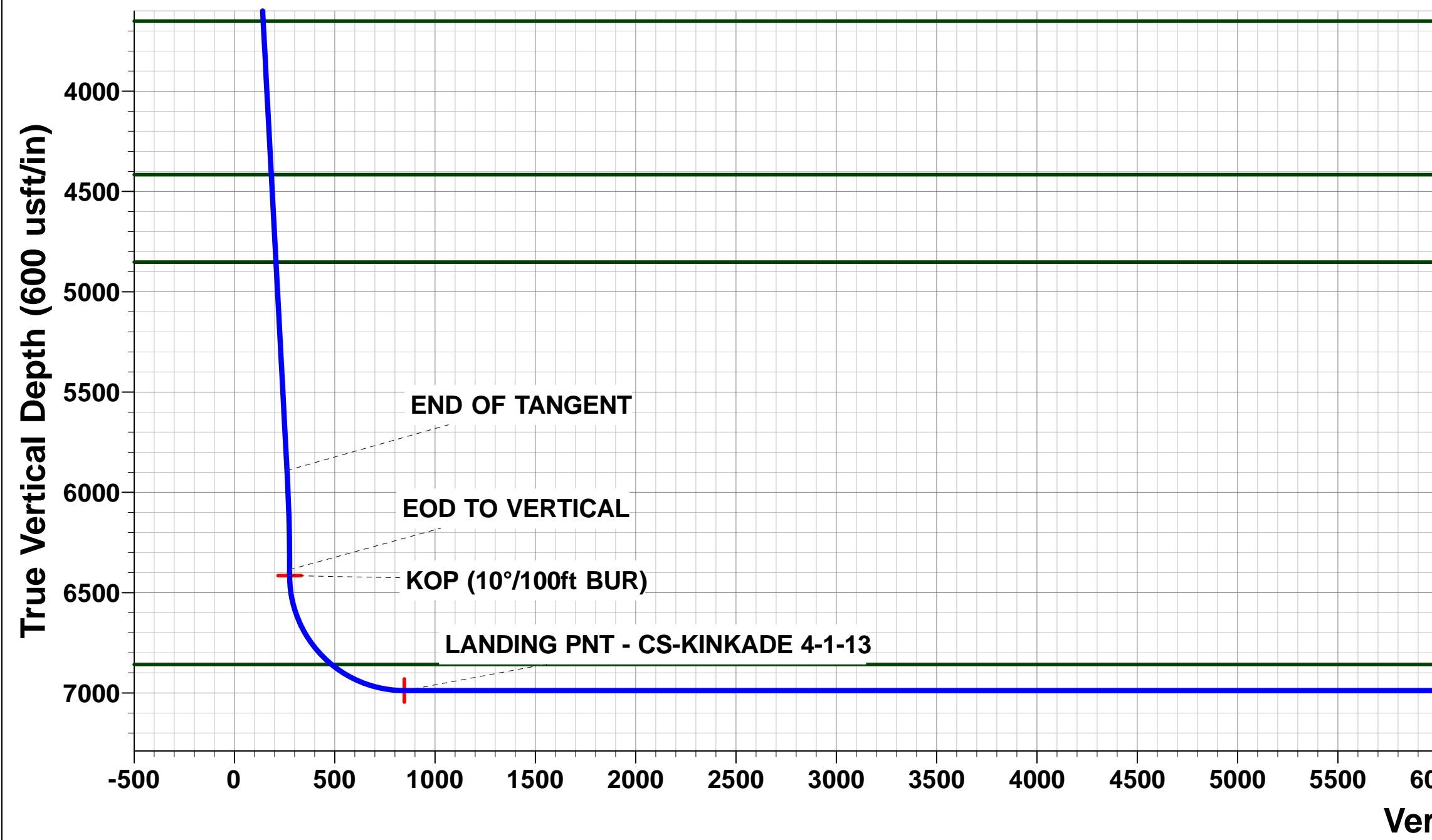
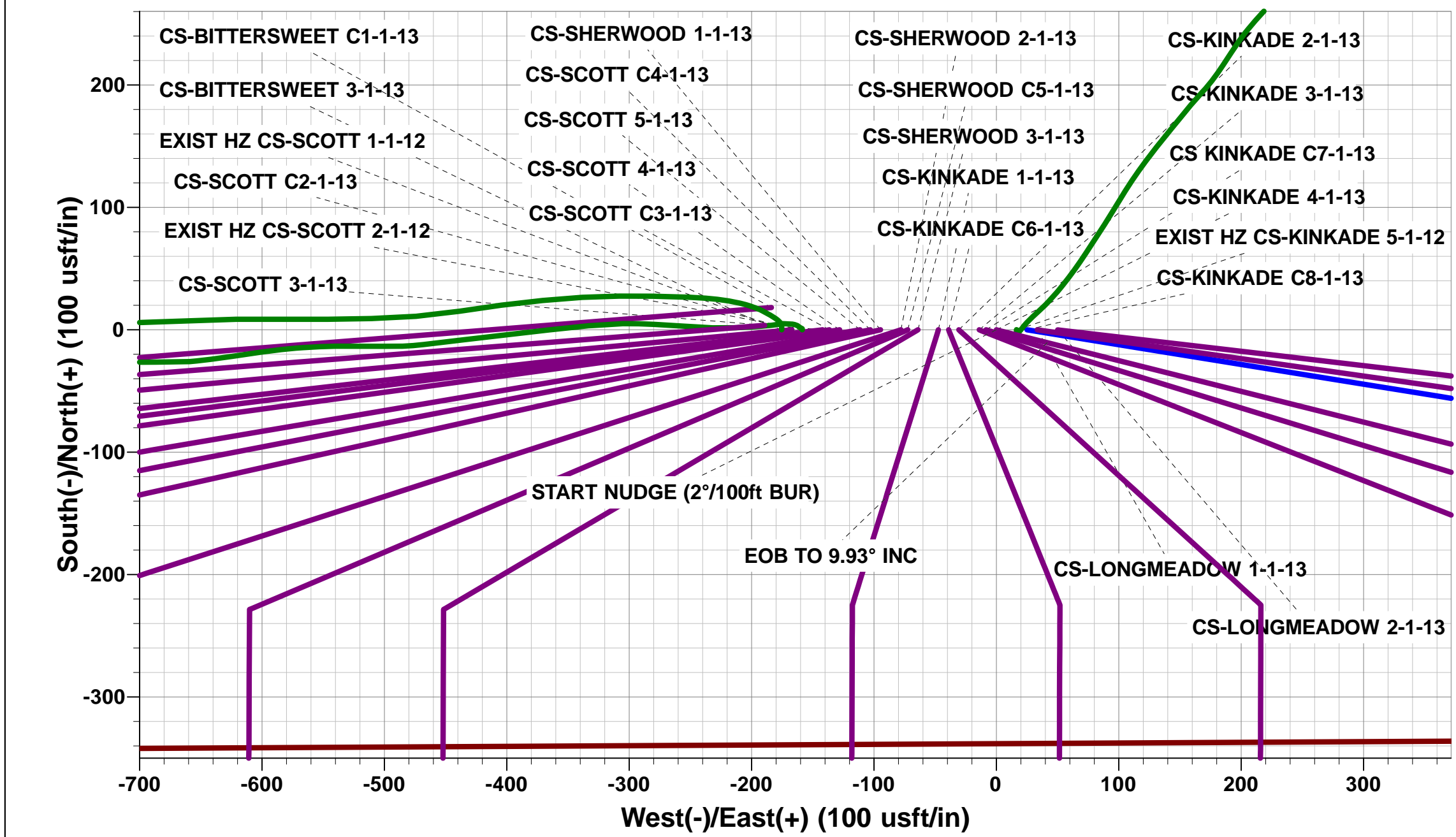
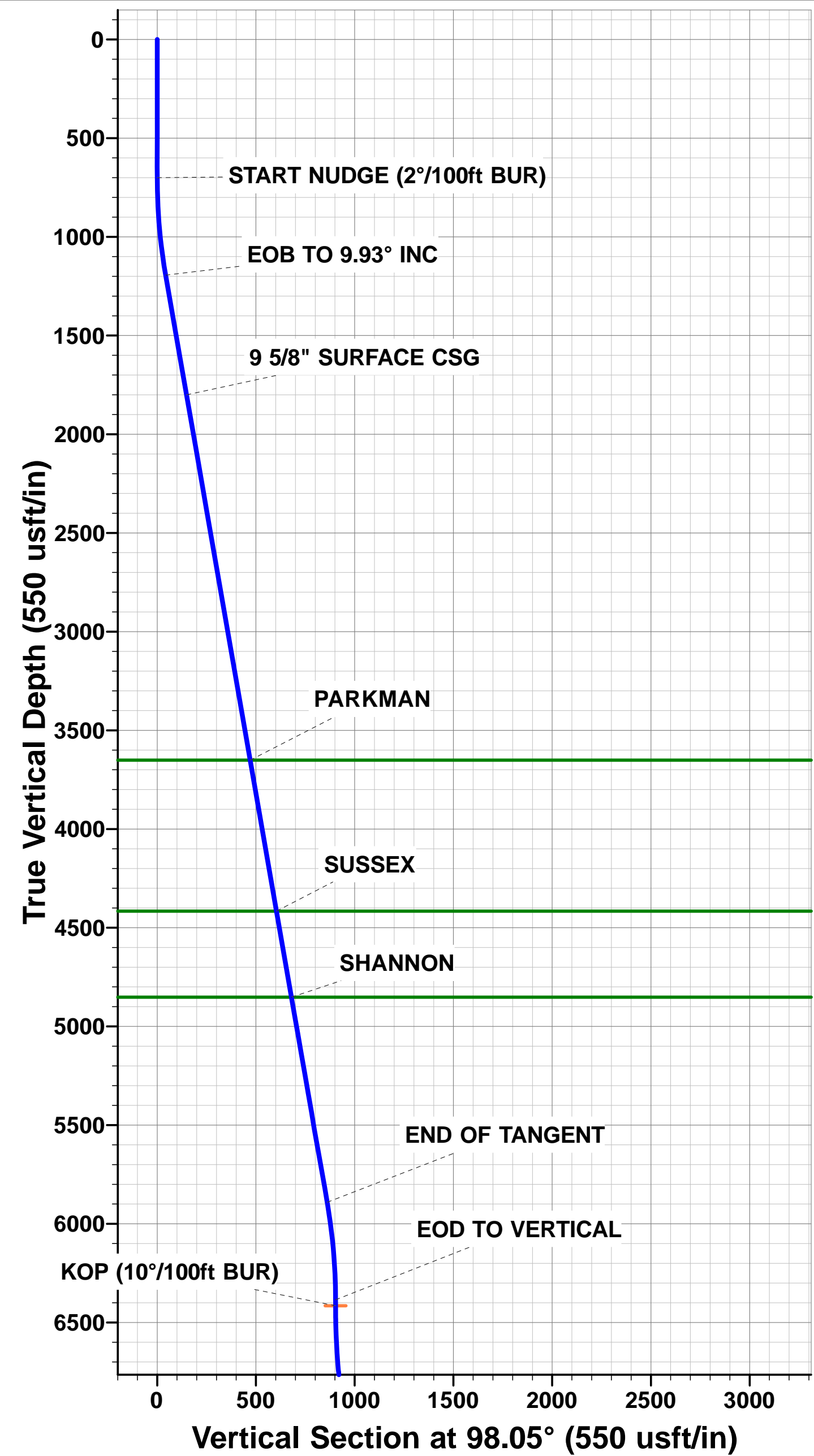


Project: WELD COUNTY, COLORADO (NAD 83)  
Site: SW SE SEC 36 T6N R66W 6th P.M.  
Well: CS-KINKADE 4-1-13  
Wellbore: ORIGINAL WELLBORE  
Design: PROPOSAL #1

ANNOTATIONS									
TVD	MD	Inc	Azi	+N/-S	+E/-W	VSec	Dep	Annotation	
700.0	700.0	0.00	0.00	0.0	0.0	0.0	0.0	START NUDGE (2°/100ft BUR)	
1194.1	1196.6	9.93	104.09	-10.5	41.6	13.0	42.9	EOB TO 9.93° INC	
1800.0	1811.7	9.93	104.09	-36.3	144.5	45.1	149.0	9 5/8" SURFACE CSG	
5890.9	5964.8	9.93	104.09	-210.7	839.4	262.0	865.4	END OF TANGENT	
6385.0	6461.4	0.00	0.00	-221.2	881.0	275.0	908.3	EOD TO VERTICAL	
6415.0	6491.4	0.00	0.00	-221.2	881.0	275.0	908.3	KOP (10°/100ft BUR)	
6988.0	7391.5	90.00	180.13	-794.2	879.7	846.8	1481.3	LANDING PNT - CS-KINKADE 4-1-13	
6988.0	20386.5	90.00	180.13	-13789.2	849.5	13815.3	14476.4	BHL - CS-KINKADE 4-1-13	

PROPOSED LOCAL COORDINATES:  
  
SHL: 338ft FSL & 1872ft FEL Sec 36  
  
LANDING PNT: 460ft FNL & 998ft FEL Sec 1  
  
BHL: 2201ft FNL & 1036ft FEL Sec 13

WELLBORE TARGET DETAILS (LAT/LONG)					
Name	TVD	+N/-S	+E/-W	Latitude	Longitude
KOP - CS-KINKADE 4-1-13	6415.0	-221.2	881.0	40.437763	-104.719435
BHL - CS-KINKADE 4-1-13	6988.0	-13789.2	849.5	40.400520	-104.719550
LANDING PNT - CS-KINKADE 4-1-13	6988.0	-794.2	879.7	40.436190	-104.719440



# Planning Report



<b>Database:</b>	EDM 5000.1 Single User Db	<b>Local Co-ordinate Reference:</b>	Well CS-KINKADE 4-1-13
<b>Company:</b>	EXTRACTION OIL & GAS	<b>TVD Reference:</b>	KB-EST @ 4680.0usft (SAV 802)
<b>Project:</b>	WELD COUNTY, COLORADO (NAD 83)	<b>MD Reference:</b>	KB-EST @ 4680.0usft (SAV 802)
<b>Site:</b>	SW SE SEC 36 T6N R66W 6th P.M.	<b>North Reference:</b>	True
<b>Well:</b>	CS-KINKADE 4-1-13	<b>Survey Calculation Method:</b>	Minimum Curvature
<b>Wellbore:</b>	ORIGINAL WELLBORE		
<b>Design:</b>	PROPOSAL #1		

<b>Project</b>	WELD COUNTY, COLORADO (NAD 83)		
<b>Map System:</b>	US State Plane 1983	<b>System Datum:</b>	Mean Sea Level
<b>Geo Datum:</b>	North American Datum 1983		
<b>Map Zone:</b>	Colorado Northern Zone		Using geodetic scale factor

<b>Site</b>	SW SE SEC 36 T6N R66W 6th P.M.		
<b>Site Position:</b>		<b>Northing:</b>	1,403,485.52 usft
<b>From:</b>	Lat/Long	<b>Easting:</b>	3,216,213.28 usft
<b>Position Uncertainty:</b>	0.0 usft	<b>Slot Radius:</b>	1.10000ft
		<b>Latitude:</b>	40.438370
		<b>Longitude:</b>	-104.723230
		<b>Grid Convergence:</b>	0.50 °

<b>Well</b>	CS-KINKADE 4-1-13		
<b>Well Position</b>	<b>+N/-S</b>	0.0 usft	<b>Northing:</b>
	<b>+E/-W</b>	175.4 usft	<b>Easting:</b>
<b>Position Uncertainty</b>	0.0 usft	<b>Wellhead Elevation:</b>	
			<b>Latitude:</b>
			<b>Longitude:</b>
			<b>Ground Level:</b>

<b>Wellbore</b>	ORIGINAL WELLBORE				
<b>Magnetics</b>	<b>Model Name</b>	<b>Sample Date</b>	<b>Declination (°)</b>	<b>Dip Angle (°)</b>	<b>Field Strength (nT)</b>
	IGRF2015	23/06/2015	8.40	66.94	52,645

<b>Design</b>	PROPOSAL #1			
<b>Audit Notes:</b>				
<b>Version:</b>	<b>Phase:</b>	PROTOTYPE	<b>Tie On Depth:</b>	0.0
<b>Vertical Section:</b>	<b>Depth From (TVD) (usft)</b>	<b>+N/-S (usft)</b>	<b>+E/-W (usft)</b>	<b>Direction (°)</b>
	0.0	0.0	0.0	176.47

<b>Plan Sections</b>											
MD (usft)	Inc (°)	Azi (°)	Vertical Depth	SS (usft)	+N/-S (usft)	+E/-W (usft)	Dogleg Rate (°/100usf)	Build Rate (°/100usf)	Turn Rate (°/100usf)	TFO (°)	Target
0.0	0.00	0.00	0.0	-4,680.0	0.0	0.0	0.00	0.00	0.00	0.00	
700.0	0.00	0.00	700.0	-3,980.0	0.0	0.0	0.00	0.00	0.00	0.00	
1,196.6	9.93	104.09	1,194.1	-3,485.9	-10.5	41.6	2.00	2.00	0.00	104.09	
5,964.8	9.93	104.09	5,890.9	1,210.9	-210.7	839.4	0.00	0.00	0.00	0.00	
6,461.4	0.00	0.00	6,385.0	1,705.0	-221.2	881.0	2.00	-2.00	0.00	180.00	
6,491.4	0.00	0.00	6,415.0	1,735.0	-221.2	881.0	0.00	0.00	0.00	0.00	KOP - CS-KINKADI
7,391.5	90.00	180.13	6,988.0	2,308.0	-794.2	879.7	10.00	10.00	-19.98	180.13	LANDING PNT - CS
20,386.5	90.00	180.13	6,988.0	2,308.0	-13,789.2	849.5	0.00	0.00	0.00	-36.13	BHL - CS-KINKADE

# Planning Report



<b>Database:</b>	EDM 5000.1 Single User Db	<b>Local Co-ordinate Reference:</b>	Well CS-KINKADE 4-1-13
<b>Company:</b>	EXTRACTION OIL & GAS	<b>TVD Reference:</b>	KB-EST @ 4680.0usft (SAV 802)
<b>Project:</b>	WELD COUNTY, COLORADO (NAD 83)	<b>MD Reference:</b>	KB-EST @ 4680.0usft (SAV 802)
<b>Site:</b>	SW SE SEC 36 T6N R66W 6th P.M.	<b>North Reference:</b>	True
<b>Well:</b>	CS-KINKADE 4-1-13	<b>Survey Calculation Method:</b>	Minimum Curvature
<b>Wellbore:</b>	ORIGINAL WELLBORE		
<b>Design:</b>	PROPOSAL #1		

Planned Survey										
MD (usft)	Inc (°)	Azi (°)	TVD (usft)	SS (usft)	+N/-S (usft)	+E/-W (usft)	Vertical Section (usft)	Dogleg Rate (°/100usft)	Build Rate (°/100usft)	Turn Rate (°/100usft)
0.0	0.00	0.00	0.0	4,680.00	0.0	0.0	0.0	0.00	0.00	0.00
100.0	0.00	0.00	100.0	4,580.00	0.0	0.0	0.0	0.00	0.00	0.00
200.0	0.00	0.00	200.0	4,480.00	0.0	0.0	0.0	0.00	0.00	0.00
300.0	0.00	0.00	300.0	4,380.00	0.0	0.0	0.0	0.00	0.00	0.00
400.0	0.00	0.00	400.0	4,280.00	0.0	0.0	0.0	0.00	0.00	0.00
500.0	0.00	0.00	500.0	4,180.00	0.0	0.0	0.0	0.00	0.00	0.00
600.0	0.00	0.00	600.0	4,080.00	0.0	0.0	0.0	0.00	0.00	0.00
<b>START NUDGE (2°/100ft BUR)</b>										
700.0	0.00	0.00	700.0	3,980.00	0.0	0.0	0.0	0.00	0.00	0.00
800.0	2.00	104.09	800.0	3,880.02	-0.4	1.7	0.5	2.00	2.00	0.00
900.0	4.00	104.09	899.8	3,780.16	-1.7	6.8	2.1	2.00	2.00	0.00
1,000.0	6.00	104.09	999.5	3,680.55	-3.8	15.2	4.8	2.00	2.00	0.00
1,100.0	8.00	104.09	1,098.7	3,581.30	-6.8	27.0	8.4	2.00	2.00	0.00
<b>EOB TO 9.93° INC</b>										
1,196.6	9.93	104.09	1,194.1	3,485.85	-10.5	41.6	13.0	2.00	2.00	0.00
1,200.0	9.93	104.09	1,197.5	3,482.53	-10.6	42.2	13.2	0.00	0.00	0.00
1,300.0	9.93	104.09	1,296.0	3,384.03	-14.8	58.9	18.4	0.00	0.00	0.00
1,400.0	9.93	104.09	1,394.5	3,285.53	-19.0	75.7	23.6	0.00	0.00	0.00
1,500.0	9.93	104.09	1,493.0	3,187.03	-23.2	92.4	28.8	0.00	0.00	0.00
1,600.0	9.93	104.09	1,591.5	3,088.53	-27.4	109.1	34.1	0.00	0.00	0.00
1,700.0	9.93	104.09	1,690.0	2,990.03	-31.6	125.9	39.3	0.00	0.00	0.00
1,800.0	9.93	104.09	1,788.5	2,891.53	-35.8	142.6	44.5	0.00	0.00	0.00
<b>9 5/8" SURFACE CSG</b>										
1,811.7	9.93	104.09	1,800.0	2,880.00	-36.3	144.5	45.1	0.00	0.00	0.00
1,900.0	9.93	104.09	1,887.0	2,793.03	-40.0	159.3	49.7	0.00	0.00	0.00
2,000.0	9.93	104.09	1,985.5	2,694.53	-44.2	176.0	54.9	0.00	0.00	0.00
2,100.0	9.93	104.09	2,084.0	2,596.02	-48.4	192.8	60.2	0.00	0.00	0.00
2,200.0	9.93	104.09	2,182.5	2,497.52	-52.6	209.5	65.4	0.00	0.00	0.00
2,300.0	9.93	104.09	2,281.0	2,399.02	-56.8	226.2	70.6	0.00	0.00	0.00
2,400.0	9.93	104.09	2,379.5	2,300.52	-61.0	243.0	75.8	0.00	0.00	0.00
2,500.0	9.93	104.09	2,478.0	2,202.02	-65.2	259.7	81.0	0.00	0.00	0.00
2,600.0	9.93	104.09	2,576.5	2,103.52	-69.4	276.4	86.3	0.00	0.00	0.00
2,700.0	9.93	104.09	2,675.0	2,005.02	-73.6	293.2	91.5	0.00	0.00	0.00
2,800.0	9.93	104.09	2,773.5	1,906.52	-77.8	309.9	96.7	0.00	0.00	0.00
2,900.0	9.93	104.09	2,872.0	1,808.02	-82.0	326.6	101.9	0.00	0.00	0.00
3,000.0	9.93	104.09	2,970.5	1,709.51	-86.2	343.3	107.2	0.00	0.00	0.00
3,100.0	9.93	104.09	3,069.0	1,611.01	-90.4	360.1	112.4	0.00	0.00	0.00
3,200.0	9.93	104.09	3,167.5	1,512.51	-94.6	376.8	117.6	0.00	0.00	0.00
3,300.0	9.93	104.09	3,266.0	1,414.01	-98.8	393.5	122.8	0.00	0.00	0.00
3,400.0	9.93	104.09	3,364.5	1,315.51	-103.0	410.3	128.0	0.00	0.00	0.00
3,500.0	9.93	104.09	3,463.0	1,217.01	-107.2	427.0	133.3	0.00	0.00	0.00
3,600.0	9.93	104.09	3,561.5	1,118.51	-111.4	443.7	138.5	0.00	0.00	0.00
<b>PARKMAN</b>										
3,690.9	9.93	104.09	3,651.0	1,029.00	-115.2	458.9	143.2	0.00	0.00	0.00
3,700.0	9.93	104.09	3,660.0	1,020.01	-115.6	460.5	143.7	0.00	0.00	0.00
3,800.0	9.93	104.09	3,758.5	921.51	-119.8	477.2	148.9	0.00	0.00	0.00
3,900.0	9.93	104.09	3,857.0	823.00	-124.0	493.9	154.1	0.00	0.00	0.00
4,000.0	9.93	104.09	3,955.5	724.50	-128.2	510.6	159.4	0.00	0.00	0.00
4,100.0	9.93	104.09	4,054.0	626.00	-132.4	527.4	164.6	0.00	0.00	0.00
4,200.0	9.93	104.09	4,152.5	527.50	-136.6	544.1	169.8	0.00	0.00	0.00
4,300.0	9.93	104.09	4,251.0	429.00	-140.8	560.8	175.0	0.00	0.00	0.00
4,400.0	9.93	104.09	4,349.5	330.50	-145.0	577.6	180.3	0.00	0.00	0.00
<b>SUSSEX</b>										
4,467.5	9.93	104.09	4,416.0	264.00	-147.8	588.9	183.8	0.00	0.00	0.00



# Planning Report



<b>Database:</b>	EDM 5000.1 Single User Db	<b>Local Co-ordinate Reference:</b>	Well CS-KINKADE 4-1-13
<b>Company:</b>	EXTRACTION OIL & GAS	<b>TVD Reference:</b>	KB-EST @ 4680.0usft (SAV 802)
<b>Project:</b>	WELD COUNTY, COLORADO (NAD 83)	<b>MD Reference:</b>	KB-EST @ 4680.0usft (SAV 802)
<b>Site:</b>	SW SE SEC 36 T6N R66W 6th P.M.	<b>North Reference:</b>	True
<b>Well:</b>	CS-KINKADE 4-1-13	<b>Survey Calculation Method:</b>	Minimum Curvature
<b>Wellbore:</b>	ORIGINAL WELLBORE		
<b>Design:</b>	PROPOSAL #1		

Planned Survey										
MD (usft)	Inc (°)	Azi (°)	TVD (usft)	SS (usft)	+N/-S (usft)	+E/-W (usft)	Vertical Section (usft)	Dogleg Rate (°/100usft)	Build Rate (°/100usft)	Turn Rate (°/100usft)
4,500.0	9.93	104.09	4,448.0	232.00	-149.2	594.3	185.5	0.00	0.00	0.00
4,600.0	9.93	104.09	4,546.5	133.50	-153.4	611.0	190.7	0.00	0.00	0.00
4,700.0	9.93	104.09	4,645.0	35.00	-157.6	627.8	195.9	0.00	0.00	0.00
4,800.0	9.93	104.09	4,743.5	-63.51	-161.8	644.5	201.1	0.00	0.00	0.00
4,900.0	9.93	104.09	4,842.0	-162.01	-166.0	661.2	206.4	0.00	0.00	0.00
<b>SHANNON</b>										
<b>4,910.1</b>	<b>9.93</b>	<b>104.09</b>	<b>4,852.0</b>	<b>-172.00</b>	<b>-166.4</b>	<b>662.9</b>	<b>206.9</b>	<b>0.00</b>	<b>0.00</b>	<b>0.00</b>
5,000.0	9.93	104.09	4,940.5	-260.51	-170.2	677.9	211.6	0.00	0.00	0.00
5,100.0	9.93	104.09	5,039.0	-359.01	-174.4	694.7	216.8	0.00	0.00	0.00
5,200.0	9.93	104.09	5,137.5	-457.51	-178.6	711.4	222.0	0.00	0.00	0.00
5,300.0	9.93	104.09	5,236.0	-556.01	-182.8	728.1	227.2	0.00	0.00	0.00
5,400.0	9.93	104.09	5,334.5	-654.51	-187.0	744.9	232.5	0.00	0.00	0.00
5,500.0	9.93	104.09	5,433.0	-753.01	-191.2	761.6	237.7	0.00	0.00	0.00
5,600.0	9.93	104.09	5,531.5	-851.51	-195.4	778.3	242.9	0.00	0.00	0.00
5,700.0	9.93	104.09	5,630.0	-950.02	-199.6	795.1	248.1	0.00	0.00	0.00
5,800.0	9.93	104.09	5,728.5	-1,048.52	-203.8	811.8	253.4	0.00	0.00	0.00
5,900.0	9.93	104.09	5,827.0	-1,147.02	-208.0	828.5	258.6	0.00	0.00	0.00
<b>END OF TANGENT</b>										
<b>5,964.8</b>	<b>9.93</b>	<b>104.09</b>	<b>5,890.9</b>	<b>-1,210.85</b>	<b>-210.7</b>	<b>839.4</b>	<b>262.0</b>	<b>0.00</b>	<b>0.00</b>	<b>0.00</b>
6,000.0	9.23	104.09	5,925.6	-1,245.56	-212.2	845.0	263.7	2.00	-2.00	0.00
6,100.0	7.23	104.09	6,024.5	-1,344.52	-215.7	858.9	268.1	2.00	-2.00	0.00
6,200.0	5.23	104.09	6,123.9	-1,443.93	-218.3	869.4	271.3	2.00	-2.00	0.00
6,300.0	3.23	104.09	6,223.6	-1,543.65	-220.1	876.6	273.6	2.00	-2.00	0.00
6,400.0	1.23	104.09	6,323.6	-1,643.57	-221.0	880.4	274.8	2.00	-2.00	0.00
<b>EOD TO VERTICAL</b>										
<b>6,461.4</b>	<b>0.00</b>	<b>0.00</b>	<b>6,385.0</b>	<b>-1,705.00</b>	<b>-221.2</b>	<b>881.0</b>	<b>275.0</b>	<b>2.00</b>	<b>-2.00</b>	<b>0.00</b>
<b>KOP (10°/100ft BUR)</b>										
<b>6,491.4</b>	<b>0.00</b>	<b>0.00</b>	<b>6,415.0</b>	<b>-1,735.00</b>	<b>-221.2</b>	<b>881.0</b>	<b>275.0</b>	<b>0.00</b>	<b>0.00</b>	<b>0.00</b>
6,500.0	0.86	180.13	6,423.6	-1,743.56	-221.3	881.0	275.0	10.00	10.00	0.00
6,600.0	10.86	180.13	6,522.9	-1,842.91	-231.5	881.0	285.2	10.00	10.00	0.00
6,700.0	20.85	180.13	6,619.0	-1,938.99	-258.7	880.9	312.4	10.00	10.00	0.00
6,800.0	30.85	180.13	6,708.9	-2,028.86	-302.3	880.8	355.9	10.00	10.00	0.00
6,900.0	40.85	180.13	6,789.8	-2,109.81	-360.8	880.7	414.3	10.00	10.00	0.00
<b>NIOBRARA</b>										
<b>6,997.8</b>	<b>50.64</b>	<b>180.13</b>	<b>6,858.0</b>	<b>-2,178.00</b>	<b>-430.8</b>	<b>880.5</b>	<b>484.1</b>	<b>10.00</b>	<b>10.00</b>	<b>0.00</b>
7,000.0	50.85	180.13	6,859.4	-2,179.38	-432.5	880.5	485.8	10.00	10.00	0.00
7,100.0	60.85	180.13	6,915.4	-2,235.44	-515.1	880.3	568.3	10.00	10.00	0.00
7,200.0	70.85	180.13	6,956.3	-2,276.30	-606.2	880.1	659.2	10.00	10.00	0.00
7,300.0	80.85	180.13	6,980.7	-2,300.71	-703.1	879.9	755.9	10.00	10.00	0.00
<b>LANDING PNT - CS-KINKADE 4-1-13</b>										
<b>7,391.5</b>	<b>90.00</b>	<b>180.13</b>	<b>6,988.0</b>	<b>-2,308.00</b>	<b>-794.2</b>	<b>879.7</b>	<b>846.8</b>	<b>10.00</b>	<b>10.00</b>	<b>0.00</b>
7,400.0	90.00	180.13	6,988.0	-2,308.00	-802.7	879.6	855.3	0.00	0.00	0.00
7,500.0	90.00	180.13	6,988.0	-2,308.00	-902.7	879.4	955.1	0.00	0.00	0.00
7,600.0	90.00	180.13	6,988.0	-2,308.01	-1,002.7	879.2	1,054.9	0.00	0.00	0.00
7,700.0	90.00	180.13	6,988.0	-2,308.01	-1,102.7	878.9	1,154.7	0.00	0.00	0.00
7,800.0	90.00	180.13	6,988.0	-2,308.01	-1,202.7	878.7	1,254.4	0.00	0.00	0.00
7,900.0	90.00	180.13	6,988.0	-2,308.02	-1,302.7	878.5	1,354.2	0.00	0.00	0.00
8,000.0	90.00	180.13	6,988.0	-2,308.02	-1,402.7	878.2	1,454.0	0.00	0.00	0.00
8,100.0	90.00	180.13	6,988.0	-2,308.02	-1,502.7	878.0	1,553.8	0.00	0.00	0.00
8,200.0	90.00	180.13	6,988.0	-2,308.02	-1,602.7	877.8	1,653.6	0.00	0.00	0.00
8,300.0	90.00	180.13	6,988.0	-2,308.03	-1,702.7	877.5	1,753.4	0.00	0.00	0.00
8,400.0	90.00	180.13	6,988.0	-2,308.03	-1,802.7	877.3	1,853.2	0.00	0.00	0.00
8,500.0	90.00	180.13	6,988.0	-2,308.03	-1,902.7	877.1	1,953.0	0.00	0.00	0.00

# Planning Report



<b>Database:</b>	EDM 5000.1 Single User Db	<b>Local Co-ordinate Reference:</b>	Well CS-KINKADE 4-1-13
<b>Company:</b>	EXTRACTION OIL & GAS	<b>TVD Reference:</b>	KB-EST @ 4680.0usft (SAV 802)
<b>Project:</b>	WELD COUNTY, COLORADO (NAD 83)	<b>MD Reference:</b>	KB-EST @ 4680.0usft (SAV 802)
<b>Site:</b>	SW SE SEC 36 T6N R66W 6th P.M.	<b>North Reference:</b>	True
<b>Well:</b>	CS-KINKADE 4-1-13	<b>Survey Calculation Method:</b>	Minimum Curvature
<b>Wellbore:</b>	ORIGINAL WELLBORE		
<b>Design:</b>	PROPOSAL #1		

Planned Survey										
MD (usft)	Inc (°)	Azi (°)	TVD (usft)	SS (usft)	+N/-S (usft)	+E/-W (usft)	Vertical Section (usft)	Dogleg Rate (°/100usft)	Build Rate (°/100usft)	Turn Rate (°/100usft)
8,600.0	90.00	180.13	6,988.0	-2,308.04	-2,002.7	876.8	2,052.8	0.00	0.00	0.00
8,700.0	90.00	180.13	6,988.0	-2,308.04	-2,102.7	876.6	2,152.6	0.00	0.00	0.00
8,800.0	90.00	180.13	6,988.0	-2,308.04	-2,202.7	876.4	2,252.4	0.00	0.00	0.00
8,900.0	90.00	180.13	6,988.0	-2,308.04	-2,302.7	876.1	2,352.2	0.00	0.00	0.00
9,000.0	90.00	180.13	6,988.0	-2,308.05	-2,402.7	875.9	2,452.0	0.00	0.00	0.00
9,100.0	90.00	180.13	6,988.0	-2,308.05	-2,502.7	875.7	2,551.8	0.00	0.00	0.00
9,200.0	90.00	180.13	6,988.0	-2,308.05	-2,602.7	875.4	2,651.6	0.00	0.00	0.00
9,300.0	90.00	180.13	6,988.1	-2,308.05	-2,702.7	875.2	2,751.4	0.00	0.00	0.00
9,400.0	90.00	180.13	6,988.1	-2,308.05	-2,802.7	875.0	2,851.2	0.00	0.00	0.00
9,500.0	90.00	180.13	6,988.1	-2,308.06	-2,902.7	874.7	2,951.0	0.00	0.00	0.00
9,600.0	90.00	180.13	6,988.1	-2,308.06	-3,002.7	874.5	3,050.8	0.00	0.00	0.00
9,700.0	90.00	180.13	6,988.1	-2,308.06	-3,102.7	874.3	3,150.6	0.00	0.00	0.00
9,800.0	90.00	180.13	6,988.1	-2,308.06	-3,202.7	874.0	3,250.4	0.00	0.00	0.00
9,900.0	90.00	180.13	6,988.1	-2,308.06	-3,302.7	873.8	3,350.2	0.00	0.00	0.00
10,000.0	90.00	180.13	6,988.1	-2,308.07	-3,402.7	873.6	3,450.0	0.00	0.00	0.00
10,100.0	90.00	180.13	6,988.1	-2,308.07	-3,502.7	873.3	3,549.8	0.00	0.00	0.00
10,200.0	90.00	180.13	6,988.1	-2,308.07	-3,602.7	873.1	3,649.6	0.00	0.00	0.00
10,300.0	90.00	180.13	6,988.1	-2,308.07	-3,702.7	872.8	3,749.4	0.00	0.00	0.00
10,400.0	90.00	180.13	6,988.1	-2,308.07	-3,802.7	872.6	3,849.1	0.00	0.00	0.00
10,500.0	90.00	180.13	6,988.1	-2,308.08	-3,902.7	872.4	3,948.9	0.00	0.00	0.00
10,600.0	90.00	180.13	6,988.1	-2,308.08	-4,002.7	872.1	4,048.7	0.00	0.00	0.00
10,700.0	90.00	180.13	6,988.1	-2,308.08	-4,102.7	871.9	4,148.5	0.00	0.00	0.00
10,800.0	90.00	180.13	6,988.1	-2,308.08	-4,202.7	871.7	4,248.3	0.00	0.00	0.00
10,900.0	90.00	180.13	6,988.1	-2,308.08	-4,302.7	871.4	4,348.1	0.00	0.00	0.00
11,000.0	90.00	180.13	6,988.1	-2,308.08	-4,402.7	871.2	4,447.9	0.00	0.00	0.00
11,100.0	90.00	180.13	6,988.1	-2,308.08	-4,502.7	871.0	4,547.7	0.00	0.00	0.00
11,200.0	90.00	180.13	6,988.1	-2,308.09	-4,602.7	870.7	4,647.5	0.00	0.00	0.00
11,300.0	90.00	180.13	6,988.1	-2,308.09	-4,702.7	870.5	4,747.3	0.00	0.00	0.00
11,400.0	90.00	180.13	6,988.1	-2,308.09	-4,802.7	870.3	4,847.1	0.00	0.00	0.00
11,500.0	90.00	180.13	6,988.1	-2,308.09	-4,902.7	870.1	4,946.9	0.00	0.00	0.00
11,600.0	90.00	180.13	6,988.1	-2,308.09	-5,002.7	869.8	5,046.7	0.00	0.00	0.00
11,700.0	90.00	180.13	6,988.1	-2,308.09	-5,102.7	869.6	5,146.5	0.00	0.00	0.00
11,800.0	90.00	180.13	6,988.1	-2,308.09	-5,202.7	869.4	5,246.3	0.00	0.00	0.00
11,900.0	90.00	180.13	6,988.1	-2,308.09	-5,302.7	869.1	5,346.1	0.00	0.00	0.00
12,000.0	90.00	180.13	6,988.1	-2,308.10	-5,402.7	868.9	5,445.9	0.00	0.00	0.00
12,100.0	90.00	180.13	6,988.1	-2,308.10	-5,502.7	868.7	5,545.7	0.00	0.00	0.00
12,200.0	90.00	180.13	6,988.1	-2,308.10	-5,602.7	868.4	5,645.5	0.00	0.00	0.00
12,300.0	90.00	180.13	6,988.1	-2,308.10	-5,702.7	868.2	5,745.3	0.00	0.00	0.00
12,400.0	90.00	180.13	6,988.1	-2,308.10	-5,802.7	868.0	5,845.1	0.00	0.00	0.00
12,500.0	90.00	180.13	6,988.1	-2,308.10	-5,902.7	867.7	5,944.9	0.00	0.00	0.00
12,600.0	90.00	180.13	6,988.1	-2,308.10	-6,002.7	867.5	6,044.7	0.00	0.00	0.00
12,700.0	90.00	180.13	6,988.1	-2,308.10	-6,102.7	867.3	6,144.5	0.00	0.00	0.00
12,800.0	90.00	180.13	6,988.1	-2,308.10	-6,202.7	867.0	6,244.3	0.00	0.00	0.00
12,900.0	90.00	180.13	6,988.1	-2,308.10	-6,302.7	866.8	6,344.1	0.00	0.00	0.00
13,000.0	90.00	180.13	6,988.1	-2,308.10	-6,402.7	866.6	6,443.8	0.00	0.00	0.00
13,100.0	90.00	180.13	6,988.1	-2,308.10	-6,502.7	866.3	6,543.6	0.00	0.00	0.00
13,200.0	90.00	180.13	6,988.1	-2,308.10	-6,602.7	866.1	6,643.4	0.00	0.00	0.00
13,300.0	90.00	180.13	6,988.1	-2,308.10	-6,702.7	865.9	6,743.2	0.00	0.00	0.00
13,400.0	90.00	180.13	6,988.1	-2,308.10	-6,802.7	865.6	6,843.0	0.00	0.00	0.00
13,500.0	90.00	180.13	6,988.1	-2,308.10	-6,902.7	865.4	6,942.8	0.00	0.00	0.00
13,600.0	90.00	180.13	6,988.1	-2,308.10	-7,002.7	865.2	7,042.6	0.00	0.00	0.00
13,700.0	90.00	180.13	6,988.1	-2,308.10	-7,102.7	864.9	7,142.4	0.00	0.00	0.00
13,800.0	90.00	180.13	6,988.1	-2,308.10	-7,202.7	864.7	7,242.2	0.00	0.00	0.00
13,900.0	90.00	180.13	6,988.1	-2,308.10	-7,302.7	864.5	7,342.0	0.00	0.00	0.00

<b>Database:</b>	EDM 5000.1 Single User Db	<b>Local Co-ordinate Reference:</b>	Well CS-KINKADE 4-1-13
<b>Company:</b>	EXTRACTION OIL & GAS	<b>TVD Reference:</b>	KB-EST @ 4680.0usft (SAV 802)
<b>Project:</b>	WELD COUNTY, COLORADO (NAD 83)	<b>MD Reference:</b>	KB-EST @ 4680.0usft (SAV 802)
<b>Site:</b>	SW SE SEC 36 T6N R66W 6th P.M.	<b>North Reference:</b>	True
<b>Well:</b>	CS-KINKADE 4-1-13	<b>Survey Calculation Method:</b>	Minimum Curvature
<b>Wellbore:</b>	ORIGINAL WELLBORE		
<b>Design:</b>	PROPOSAL #1		

Planned Survey										
MD (usft)	Inc (°)	Azi (°)	TVD (usft)	SS (usft)	+N/-S (usft)	+E/-W (usft)	Vertical Section (usft)	Dogleg Rate (°/100usft)	Build Rate (°/100usft)	Turn Rate (°/100usft)
14,000.0	90.00	180.13	6,988.1	-2,308.10	-7,402.7	864.2	7,441.8	0.00	0.00	0.00
14,100.0	90.00	180.13	6,988.1	-2,308.10	-7,502.7	864.0	7,541.6	0.00	0.00	0.00
14,200.0	90.00	180.13	6,988.1	-2,308.10	-7,602.7	863.8	7,641.4	0.00	0.00	0.00
14,300.0	90.00	180.13	6,988.1	-2,308.10	-7,702.7	863.5	7,741.2	0.00	0.00	0.00
14,400.0	90.00	180.13	6,988.1	-2,308.10	-7,802.7	863.3	7,841.0	0.00	0.00	0.00
14,500.0	90.00	180.13	6,988.1	-2,308.10	-7,902.7	863.1	7,940.8	0.00	0.00	0.00
14,600.0	90.00	180.13	6,988.1	-2,308.10	-8,002.7	862.8	8,040.6	0.00	0.00	0.00
14,700.0	90.00	180.13	6,988.1	-2,308.10	-8,102.7	862.6	8,140.4	0.00	0.00	0.00
14,800.0	90.00	180.13	6,988.1	-2,308.10	-8,202.7	862.4	8,240.2	0.00	0.00	0.00
14,900.0	90.00	180.13	6,988.1	-2,308.10	-8,302.7	862.1	8,340.0	0.00	0.00	0.00
15,000.0	90.00	180.13	6,988.1	-2,308.10	-8,402.7	861.9	8,439.8	0.00	0.00	0.00
15,100.0	90.00	180.13	6,988.1	-2,308.10	-8,502.7	861.7	8,539.6	0.00	0.00	0.00
15,200.0	90.00	180.13	6,988.1	-2,308.10	-8,602.7	861.5	8,639.4	0.00	0.00	0.00
15,300.0	90.00	180.13	6,988.1	-2,308.10	-8,702.7	861.2	8,739.2	0.00	0.00	0.00
15,400.0	90.00	180.13	6,988.1	-2,308.10	-8,802.7	861.0	8,839.0	0.00	0.00	0.00
15,500.0	90.00	180.13	6,988.1	-2,308.10	-8,902.7	860.8	8,938.8	0.00	0.00	0.00
15,600.0	90.00	180.13	6,988.1	-2,308.10	-9,002.7	860.5	9,038.6	0.00	0.00	0.00
15,700.0	90.00	180.13	6,988.1	-2,308.10	-9,102.7	860.3	9,138.3	0.00	0.00	0.00
15,800.0	90.00	180.13	6,988.1	-2,308.10	-9,202.7	860.1	9,238.1	0.00	0.00	0.00
15,900.0	90.00	180.13	6,988.1	-2,308.09	-9,302.7	859.8	9,337.9	0.00	0.00	0.00
16,000.0	90.00	180.13	6,988.1	-2,308.09	-9,402.7	859.6	9,437.7	0.00	0.00	0.00
16,100.0	90.00	180.13	6,988.1	-2,308.09	-9,502.7	859.4	9,537.5	0.00	0.00	0.00
16,200.0	90.00	180.13	6,988.1	-2,308.09	-9,602.7	859.1	9,637.3	0.00	0.00	0.00
16,300.0	90.00	180.13	6,988.1	-2,308.09	-9,702.7	858.9	9,737.1	0.00	0.00	0.00
16,400.0	90.00	180.13	6,988.1	-2,308.09	-9,802.7	858.7	9,836.9	0.00	0.00	0.00
16,500.0	90.00	180.13	6,988.1	-2,308.09	-9,902.7	858.4	9,936.7	0.00	0.00	0.00
16,600.0	90.00	180.13	6,988.1	-2,308.09	-10,002.7	858.2	10,036.5	0.00	0.00	0.00
16,700.0	90.00	180.13	6,988.1	-2,308.08	-10,102.7	858.0	10,136.3	0.00	0.00	0.00
16,800.0	90.00	180.13	6,988.1	-2,308.08	-10,202.7	857.7	10,236.1	0.00	0.00	0.00
16,900.0	90.00	180.13	6,988.1	-2,308.08	-10,302.7	857.5	10,335.9	0.00	0.00	0.00
17,000.0	90.00	180.13	6,988.1	-2,308.08	-10,402.7	857.3	10,435.7	0.00	0.00	0.00
17,100.0	90.00	180.13	6,988.1	-2,308.08	-10,502.7	857.1	10,535.5	0.00	0.00	0.00
17,200.0	90.00	180.13	6,988.1	-2,308.08	-10,602.7	856.8	10,635.3	0.00	0.00	0.00
17,300.0	90.00	180.13	6,988.1	-2,308.08	-10,702.7	856.6	10,735.1	0.00	0.00	0.00
17,400.0	90.00	180.13	6,988.1	-2,308.07	-10,802.7	856.4	10,834.9	0.00	0.00	0.00
17,500.0	90.00	180.13	6,988.1	-2,308.07	-10,902.7	856.1	10,934.7	0.00	0.00	0.00
17,600.0	90.00	180.13	6,988.1	-2,308.07	-11,002.7	855.9	11,034.5	0.00	0.00	0.00
17,700.0	90.00	180.13	6,988.1	-2,308.07	-11,102.7	855.7	11,134.3	0.00	0.00	0.00
17,800.0	90.00	180.13	6,988.1	-2,308.07	-11,202.7	855.4	11,234.1	0.00	0.00	0.00
17,900.0	90.00	180.13	6,988.1	-2,308.06	-11,302.7	855.2	11,333.9	0.00	0.00	0.00
18,000.0	90.00	180.13	6,988.1	-2,308.06	-11,402.7	855.0	11,433.7	0.00	0.00	0.00
18,100.0	90.00	180.13	6,988.1	-2,308.06	-11,502.7	854.7	11,533.5	0.00	0.00	0.00
18,200.0	90.00	180.13	6,988.1	-2,308.06	-11,602.7	854.5	11,633.3	0.00	0.00	0.00
18,300.0	90.00	180.13	6,988.1	-2,308.06	-11,702.7	854.3	11,733.1	0.00	0.00	0.00
18,400.0	90.00	180.13	6,988.1	-2,308.05	-11,802.7	854.1	11,832.8	0.00	0.00	0.00
18,500.0	90.00	180.13	6,988.1	-2,308.05	-11,902.7	853.8	11,932.6	0.00	0.00	0.00
18,600.0	90.00	180.13	6,988.0	-2,308.05	-12,002.7	853.6	12,032.4	0.00	0.00	0.00
18,700.0	90.00	180.13	6,988.0	-2,308.05	-12,102.7	853.4	12,132.2	0.00	0.00	0.00
18,800.0	90.00	180.13	6,988.0	-2,308.04	-12,202.7	853.1	12,232.0	0.00	0.00	0.00
18,900.0	90.00	180.13	6,988.0	-2,308.04	-12,302.7	852.9	12,331.8	0.00	0.00	0.00
19,000.0	90.00	180.13	6,988.0	-2,308.04	-12,402.7	852.7	12,431.6	0.00	0.00	0.00
19,100.0	90.00	180.13	6,988.0	-2,308.04	-12,502.7	852.4	12,531.4	0.00	0.00	0.00
19,200.0	90.00	180.13	6,988.0	-2,308.03	-12,602.7	852.2	12,631.2	0.00	0.00	0.00
19,300.0	90.00	180.13	6,988.0	-2,308.03	-12,702.7	852.0	12,731.0	0.00	0.00	0.00

<b>Database:</b>	EDM 5000.1 Single User Db	<b>Local Co-ordinate Reference:</b>	Well CS-KINKADE 4-1-13
<b>Company:</b>	EXTRACTION OIL & GAS	<b>TVD Reference:</b>	KB-EST @ 4680.0usft (SAV 802)
<b>Project:</b>	WELD COUNTY, COLORADO (NAD 83)	<b>MD Reference:</b>	KB-EST @ 4680.0usft (SAV 802)
<b>Site:</b>	SW SE SEC 36 T6N R66W 6th P.M.	<b>North Reference:</b>	True
<b>Well:</b>	CS-KINKADE 4-1-13	<b>Survey Calculation Method:</b>	Minimum Curvature
<b>Wellbore:</b>	ORIGINAL WELLBORE		
<b>Design:</b>	PROPOSAL #1		

## Planned Survey

MD (usft)	Inc (°)	Azi (°)	TVD (usft)	SS (usft)	+N/-S (usft)	+E/-W (usft)	Vertical Section (usft)	Dogleg Rate (°/100usft)	Build Rate (°/100usft)	Turn Rate (°/100usft)
19,400.0	90.00	180.13	6,988.0	-2,308.03	-12,802.7	851.8	12,830.8	0.00	0.00	0.00
19,500.0	90.00	180.13	6,988.0	-2,308.03	-12,902.7	851.5	12,930.6	0.00	0.00	0.00
19,600.0	90.00	180.13	6,988.0	-2,308.02	-13,002.7	851.3	13,030.4	0.00	0.00	0.00
19,700.0	90.00	180.13	6,988.0	-2,308.02	-13,102.7	851.1	13,130.2	0.00	0.00	0.00
19,800.0	90.00	180.13	6,988.0	-2,308.02	-13,202.7	850.8	13,230.0	0.00	0.00	0.00
19,900.0	90.00	180.13	6,988.0	-2,308.02	-13,302.7	850.6	13,329.8	0.00	0.00	0.00
20,000.0	90.00	180.13	6,988.0	-2,308.01	-13,402.7	850.4	13,429.6	0.00	0.00	0.00
20,100.0	90.00	180.13	6,988.0	-2,308.01	-13,502.7	850.1	13,529.4	0.00	0.00	0.00
20,200.0	90.00	180.13	6,988.0	-2,308.01	-13,602.7	849.9	13,629.2	0.00	0.00	0.00
20,300.0	90.00	180.13	6,988.0	-2,308.00	-13,702.7	849.7	13,729.0	0.00	0.00	0.00
<b>BHL - CS-KINKADE 4-1-13</b>										
<b>20,386.5</b>	<b>90.00</b>	<b>180.13</b>	<b>6,988.0</b>	<b>-2,308.00</b>	<b>-13,789.2</b>	<b>849.5</b>	<b>13,815.3</b>	<b>0.00</b>	<b>0.00</b>	<b>0.00</b>

## Formations

MD (usft)	TVD (usft)	Name	Lithology	Dip (°)	Dip Direction (°)
3,690.9	3,651.0	PARKMAN			
4,467.5	4,416.0	SUSSEX			
4,910.1	4,852.0	SHANNON			
6,997.8	6,858.0	NIOBRARA			

## Plan Annotations

MD (usft)	TVD (usft)	Local Coordinates		Comment
		+N/-S (usft)	+E/-W (usft)	
700.0	700.0	0.0	0.0	START NUDGE (2°/100ft BUR)
1,196.6	1,194.1	-10.5	41.6	EOB TO 9.93° INC
1,811.7	1,800.0	-36.3	144.5	9 5/8" SURFACE CSG
5,964.8	5,890.9	-210.7	839.4	END OF TANGENT
6,461.4	6,385.0	-221.2	881.0	EOD TO VERTICAL
6,491.4	6,415.0	-221.2	881.0	KOP (10°/100ft BUR)
7,391.5	6,988.0	-794.2	879.7	LANDING PNT - CS-KINKADE 4-1-13
20,386.5	6,988.0	-13,789.2	849.5	BHL - CS-KINKADE 4-1-13