

EXTRACTION OIL & GAS

WELD COUNTY, COLORADO (NAD 83)

SW SE SEC 36 T6N R66W 6th P.M.

CS-SCOTT 3-1-13

ORIGINAL WELLBORE

02 November, 2015

Plan: PROPOSAL #2





Project: WELD COUNTY, COLORADO (NAD 83)
Site: SW SE SEC 36 T6N R66W 6th P.M.
Well: CS-SCOTT 3-1-13
Wellbore: ORIGINAL WELLBORE
Design: PROPOSAL #2

ANNOTATIONS

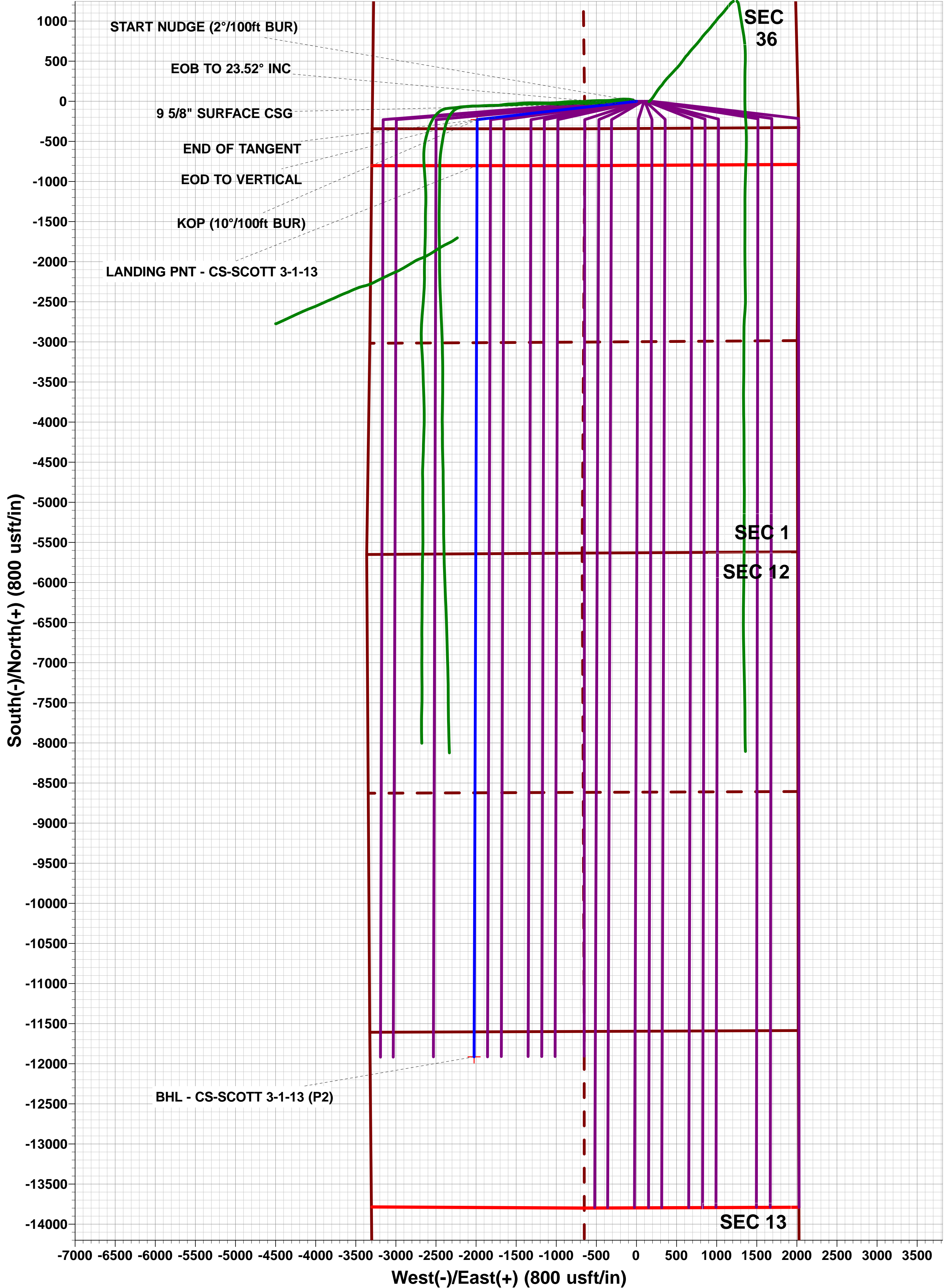
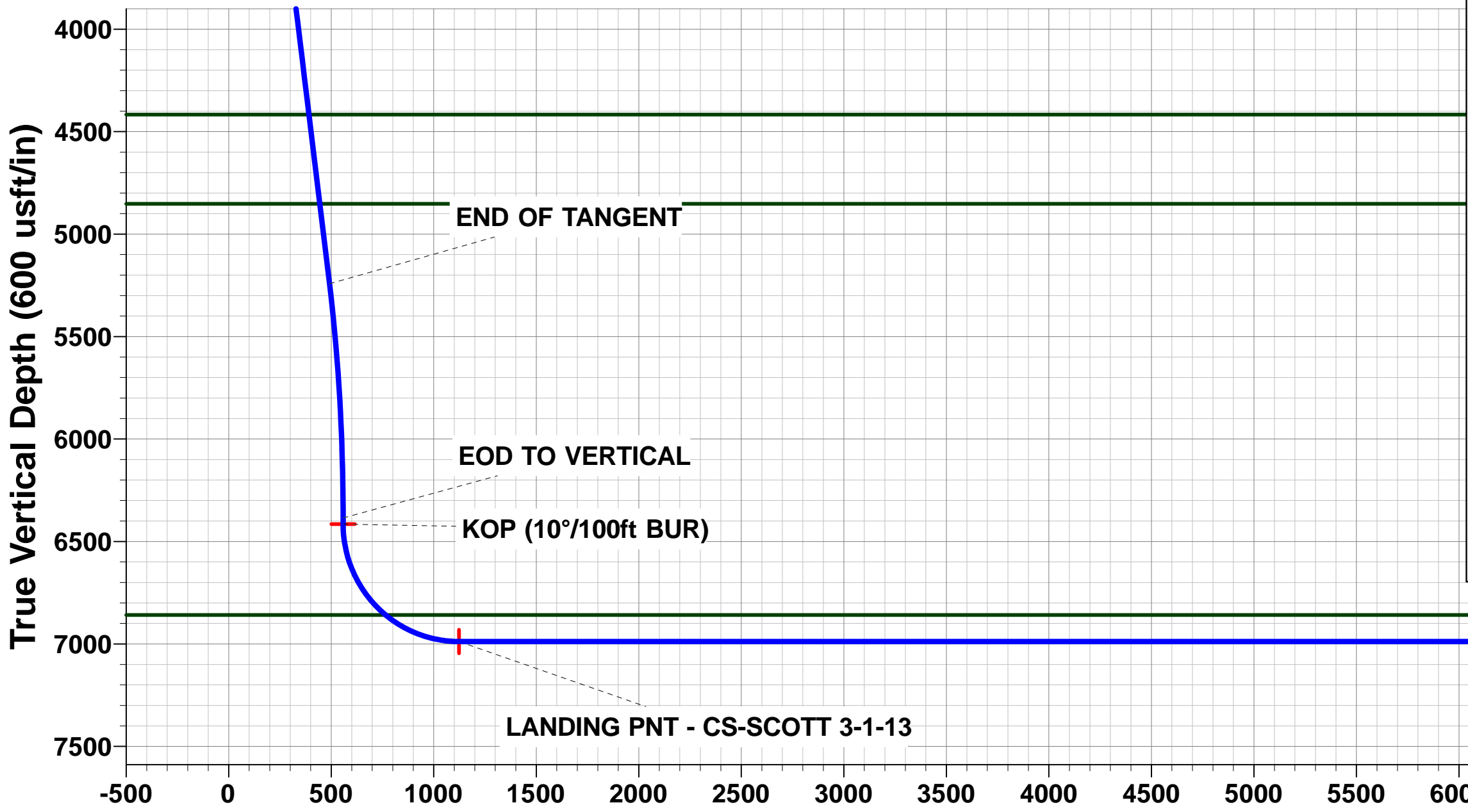
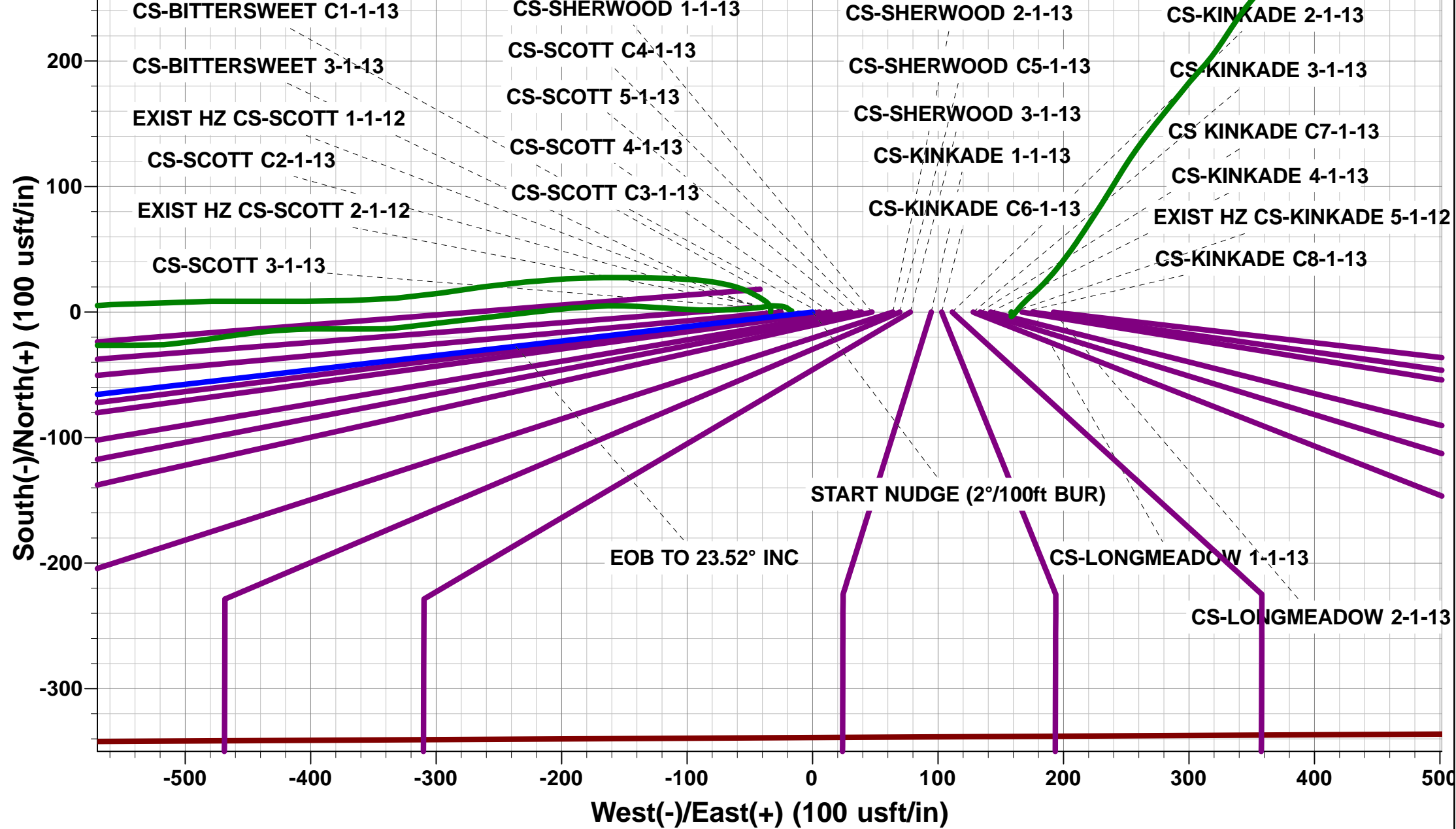
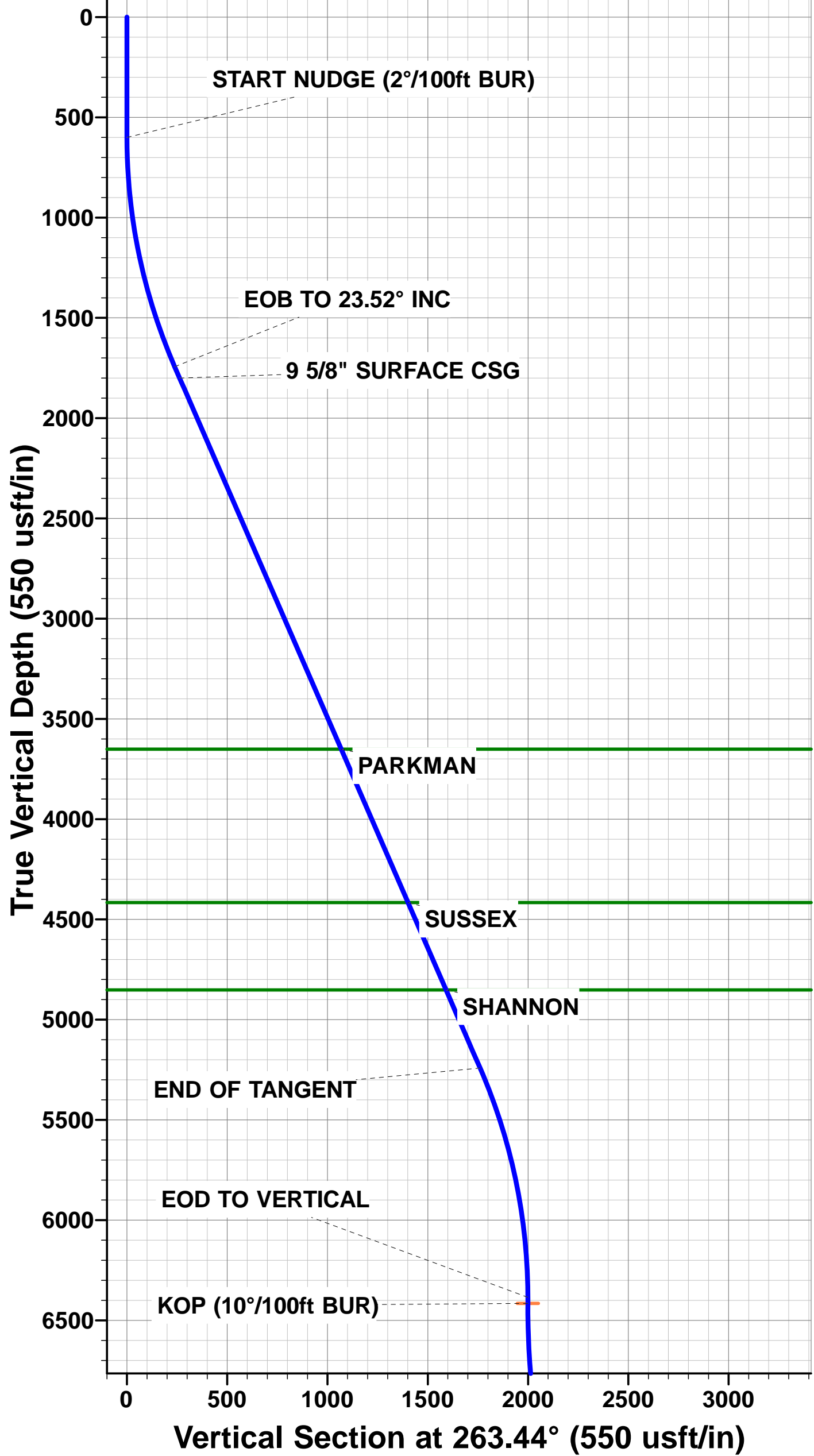
TVD	MD	Inc	Azi	+N/-S	+E/-W	V Sect	Dep	Annotation
600.0	600.0	0.00	0.00	0.0	0.0	0.0	0.0	START NUDGE (2°/100ft BUR)
1743.4	1776.2	23.52	263.44	-27.2	-236.5	66.4	238.1	EOB TO 23.52° INC
1800.0	1837.9	23.52	263.44	-30.0	-261.0	73.3	262.7	9 5/8" SURFACE CSG
5241.6	5591.4	23.52	263.44	-201.2	-1749.3	491.5	1760.8	END OF TANGENT
6385.0	6767.6	0.00	0.00	-228.4	-1985.8	557.9	1998.9	EOD TO VERTICAL
6415.0	6797.6	0.00	0.00	-228.4	-1985.8	557.9	1998.9	KOP (10°/100ft BUR)
6988.0	7697.7	90.00	180.18	-801.4	-1987.6	1123.1	2571.9	LANDING PNT - CS-SCOTT 3-1-13
6988.0	18809.2	90.00	180.20	-11912.9	-2024.7	12083.7	13683.4	BHL - CS-SCOTT 3-1-13 (P2)

PROPOSED LOCAL COORDINATES:

SHL: 341ft FSL & 2016ft FEL Sec 36
LANDING PNT: 460ft FNL & 1311t FWL Sec 1
BHL: 310ft FNL & 1296ft FWL Sec 13

WELLBORE TARGET DETAILS (LAT/LONG)

Name	TVD	+N/-S	+E/-W	Latitude	Longitude
KOP - CS-SCOTT 3-1-13	6415.0	-228.4	-1985.8	40.437743	-104.730244
BHL - CS-SCOTT 3-1-13 (P2)	6988.0	-11912.9	-2024.7	40.405670	-104.730380
LANDING PNT - CS-SCOTT 3-1-13	6988.0	-801.4	-1987.6	40.436170	-104.730250



Planning Report



Database:	EDM 5000.1 Single User Db	Local Co-ordinate Reference:	Well CS-SCOTT 3-1-13
Company:	EXTRACTION OIL & GAS	TVD Reference:	KB-EST @ 4681.0usft (Original Well Elev)
Project:	WELD COUNTY, COLORADO (NAD 83)	MD Reference:	KB-EST @ 4681.0usft (Original Well Elev)
Site:	SW SE SEC 36 T6N R66W 6th P.M.	North Reference:	True
Well:	CS-SCOTT 3-1-13	Survey Calculation Method:	Minimum Curvature
Wellbore:	ORIGINAL WELLBORE		
Design:	PROPOSAL #2		

Project	WELD COUNTY, COLORADO (NAD 83)		
Map System:	US State Plane 1983	System Datum:	Mean Sea Level
Geo Datum:	North American Datum 1983		
Map Zone:	Colorado Northern Zone		Using geodetic scale factor

Site	SW SE SEC 36 T6N R66W 6th P.M.		
Site Position:		Northing:	1,403,485.52 usft
From:	Lat/Long	Easting:	3,216,213.28 usft
Position Uncertainty:	0.0 usft	Slot Radius:	1.10000ft
		Latitude:	40.438370
		Longitude:	-104.723230
		Grid Convergence:	0.50 °

Well	CS-SCOTT 3-1-13		
Well Position	+N-S	0.0 usft	Northing:
	+E-W	33.4 usft	Easting:
Position Uncertainty		0.0 usft	Wellhead Elevation:
			Latitude:
			Longitude:
			Ground Level:

Wellbore	ORIGINAL WELLBORE				
Magnetics	Model Name	Sample Date	Declination (°)	Dip Angle (°)	Field Strength (nT)
	IGRF2015	23/06/2015	8.40	66.94	52,644

Design	PROPOSAL #2			
Audit Notes:				
Version:	Phase:	PROTOTYPE	Tie On Depth:	0.0
Vertical Section:	Depth From (TVD) (usft)	+N-S (usft)	+E-W (usft)	Direction (°)
	6,988.0	0.0	0.0	189.65

Plan Sections											
MD (usft)	Inc (°)	Azi (°)	Vertical Depth	SS (usft)	+N-S (usft)	+E-W (usft)	Dogleg Rate (°/100usf)	Build Rate (°/100usf)	Turn Rate (°/100usf)	TFO (°)	Target
0.0	0.00	0.00	0.0	-4,681.0	0.0	0.0	0.00	0.00	0.00	0.00	
600.0	0.00	0.00	600.0	-4,081.0	0.0	0.0	0.00	0.00	0.00	0.00	
1,776.2	23.52	263.44	1,743.4	-2,937.6	-27.2	-236.5	2.00	2.00	0.00	263.44	
5,591.4	23.52	263.44	5,241.6	560.6	-201.2	-1,749.3	0.00	0.00	0.00	0.00	
6,767.6	0.00	0.00	6,385.0	1,704.0	-228.4	-1,985.8	2.00	-2.00	0.00	180.00	
6,797.6	0.00	0.00	6,415.0	1,734.0	-228.4	-1,985.8	0.00	0.00	0.00	0.00	KOP - CS-SCOTT 3
7,697.7	90.00	180.18	6,988.0	2,307.0	-801.4	-1,987.6	10.00	10.00	-19.98	180.18	LANDING PNT - CS
18,809.2	90.00	180.20	6,988.0	2,307.0	-11,912.9	-2,024.7	0.00	0.00	0.00	92.02	BHL - CS-SCOTT 3

Database:	EDM 5000.1 Single User Db	Local Co-ordinate Reference:	Well CS-SCOTT 3-1-13
Company:	EXTRACTION OIL & GAS	TVD Reference:	KB-EST @ 4681.0usft (Original Well Elev)
Project:	WELD COUNTY, COLORADO (NAD 83)	MD Reference:	KB-EST @ 4681.0usft (Original Well Elev)
Site:	SW SE SEC 36 T6N R66W 6th P.M.	North Reference:	True
Well:	CS-SCOTT 3-1-13	Survey Calculation Method:	Minimum Curvature
Wellbore:	ORIGINAL WELLBORE		
Design:	PROPOSAL #2		

Planned Survey

MD (usft)	Inc (°)	Azi (°)	TVD (usft)	SS (usft)	+N/-S (usft)	+E/-W (usft)	Vertical Section (usft)	Dogleg Rate (°/100usft)	Build Rate (°/100usft)	Turn Rate (°/100usft)
0.0	0.00	0.00	0.0	4,681.00	0.0	0.0	0.0	0.00	0.00	0.00
100.0	0.00	0.00	100.0	4,581.00	0.0	0.0	0.0	0.00	0.00	0.00
200.0	0.00	0.00	200.0	4,481.00	0.0	0.0	0.0	0.00	0.00	0.00
300.0	0.00	0.00	300.0	4,381.00	0.0	0.0	0.0	0.00	0.00	0.00
400.0	0.00	0.00	400.0	4,281.00	0.0	0.0	0.0	0.00	0.00	0.00
500.0	0.00	0.00	500.0	4,181.00	0.0	0.0	0.0	0.00	0.00	0.00
START NUDGE (2°/100ft BUR)										
600.0	0.00	0.00	600.0	4,081.00	0.0	0.0	0.0	0.00	0.00	0.00
700.0	2.00	263.44	700.0	3,981.02	-0.2	-1.7	0.5	2.00	2.00	0.00
800.0	4.00	263.44	799.8	3,881.16	-0.8	-6.9	1.9	2.00	2.00	0.00
900.0	6.00	263.44	899.5	3,781.55	-1.8	-15.6	4.4	2.00	2.00	0.00
1,000.0	8.00	263.44	998.7	3,682.30	-3.2	-27.7	7.8	2.00	2.00	0.00
1,100.0	10.00	263.44	1,097.5	3,583.53	-5.0	-43.2	12.1	2.00	2.00	0.00
1,200.0	12.00	263.44	1,195.6	3,485.38	-7.2	-62.2	17.5	2.00	2.00	0.00
1,300.0	14.00	263.44	1,293.1	3,387.94	-9.7	-84.5	23.8	2.00	2.00	0.00
1,400.0	16.00	263.44	1,389.6	3,291.36	-12.7	-110.3	31.0	2.00	2.00	0.00
1,500.0	18.00	263.44	1,485.3	3,195.73	-16.0	-139.3	39.1	2.00	2.00	0.00
1,600.0	20.00	263.44	1,579.8	3,101.18	-19.7	-171.6	48.2	2.00	2.00	0.00
1,700.0	22.00	263.44	1,673.2	3,007.83	-23.8	-207.2	58.2	2.00	2.00	0.00
EOB TO 23.52° INC										
1,776.2	23.52	263.44	1,743.4	2,937.60	-27.2	-236.5	66.4	2.00	2.00	0.00
1,800.0	23.52	263.44	1,765.3	2,915.75	-28.3	-246.0	69.1	0.00	0.00	0.00
9 5/8" SURFACE CSG										
1,837.9	23.52	263.44	1,800.0	2,881.00	-30.0	-261.0	73.3	0.00	0.00	0.00
1,900.0	23.52	263.44	1,856.9	2,824.06	-32.9	-285.6	80.2	0.00	0.00	0.00
2,000.0	23.52	263.44	1,948.6	2,732.37	-37.4	-325.3	91.4	0.00	0.00	0.00
2,100.0	23.52	263.44	2,040.3	2,640.68	-42.0	-364.9	102.5	0.00	0.00	0.00
2,200.0	23.52	263.44	2,132.0	2,548.99	-46.5	-404.6	113.7	0.00	0.00	0.00
2,300.0	23.52	263.44	2,223.7	2,457.30	-51.1	-444.2	124.8	0.00	0.00	0.00
2,400.0	23.52	263.44	2,315.4	2,365.61	-55.7	-483.9	135.9	0.00	0.00	0.00
2,500.0	23.52	263.44	2,407.1	2,273.92	-60.2	-523.5	147.1	0.00	0.00	0.00
2,600.0	23.52	263.44	2,498.8	2,182.23	-64.8	-563.2	158.2	0.00	0.00	0.00
2,700.0	23.52	263.44	2,590.5	2,090.54	-69.3	-602.8	169.4	0.00	0.00	0.00
2,800.0	23.52	263.44	2,682.2	1,998.85	-73.9	-642.5	180.5	0.00	0.00	0.00
2,900.0	23.52	263.44	2,773.8	1,907.16	-78.5	-682.1	191.6	0.00	0.00	0.00
3,000.0	23.52	263.44	2,865.5	1,815.47	-83.0	-721.8	202.8	0.00	0.00	0.00
3,100.0	23.52	263.44	2,957.2	1,723.78	-87.6	-761.4	213.9	0.00	0.00	0.00
3,200.0	23.52	263.44	3,048.9	1,632.09	-92.1	-801.1	225.1	0.00	0.00	0.00
3,300.0	23.52	263.44	3,140.6	1,540.40	-96.7	-840.7	236.2	0.00	0.00	0.00
3,400.0	23.52	263.44	3,232.3	1,448.71	-101.3	-880.4	247.3	0.00	0.00	0.00
3,500.0	23.52	263.44	3,324.0	1,357.02	-105.8	-920.0	258.5	0.00	0.00	0.00
3,600.0	23.52	263.44	3,415.7	1,265.33	-110.4	-959.7	269.6	0.00	0.00	0.00
3,700.0	23.52	263.44	3,507.4	1,173.64	-114.9	-999.3	280.8	0.00	0.00	0.00
3,800.0	23.52	263.44	3,599.1	1,081.95	-119.5	-1,039.0	291.9	0.00	0.00	0.00
PARKMAN										
3,856.7	23.52	263.44	3,651.0	1,030.00	-122.1	-1,061.4	298.2	0.00	0.00	0.00
3,900.0	23.52	263.44	3,690.7	990.26	-124.1	-1,078.6	303.0	0.00	0.00	0.00
4,000.0	23.52	263.44	3,782.4	898.57	-128.6	-1,118.3	314.2	0.00	0.00	0.00
4,100.0	23.52	263.44	3,874.1	806.88	-133.2	-1,157.9	325.3	0.00	0.00	0.00
4,200.0	23.52	263.44	3,965.8	715.19	-137.7	-1,197.6	336.5	0.00	0.00	0.00
4,300.0	23.52	263.44	4,057.5	623.50	-142.3	-1,237.2	347.6	0.00	0.00	0.00
4,400.0	23.52	263.44	4,149.2	531.81	-146.9	-1,276.9	358.7	0.00	0.00	0.00
4,500.0	23.52	263.44	4,240.9	440.12	-151.4	-1,316.5	369.9	0.00	0.00	0.00
4,600.0	23.52	263.44	4,332.6	348.43	-156.0	-1,356.2	381.0	0.00	0.00	0.00

Planning Report



Database:	EDM 5000.1 Single User Db	Local Co-ordinate Reference:	Well CS-SCOTT 3-1-13
Company:	EXTRACTION OIL & GAS	TVD Reference:	KB-EST @ 4681.0usft (Original Well Elev)
Project:	WELD COUNTY, COLORADO (NAD 83)	MD Reference:	KB-EST @ 4681.0usft (Original Well Elev)
Site:	SW SE SEC 36 T6N R66W 6th P.M.	North Reference:	True
Well:	CS-SCOTT 3-1-13	Survey Calculation Method:	Minimum Curvature
Wellbore:	ORIGINAL WELLBORE		
Design:	PROPOSAL #2		

Planned Survey

MD (usft)	Inc (°)	Azi (°)	TVD (usft)	SS (usft)	+N/-S (usft)	+E/-W (usft)	Vertical Section (usft)	Dogleg Rate (°/100usft)	Build Rate (°/100usft)	Turn Rate (°/100usft)
SUSSEX										
4,691.0	23.52	263.44	4,416.0	265.00	-160.1	-1,392.3	391.1	0.00	0.00	0.00
4,700.0	23.52	263.44	4,424.3	256.74	-160.5	-1,395.8	392.2	0.00	0.00	0.00
4,800.0	23.52	263.44	4,515.9	165.05	-165.1	-1,435.5	403.3	0.00	0.00	0.00
4,900.0	23.52	263.44	4,607.6	73.36	-169.7	-1,475.1	414.4	0.00	0.00	0.00
5,000.0	23.52	263.44	4,699.3	-18.33	-174.2	-1,514.8	425.6	0.00	0.00	0.00
5,100.0	23.52	263.44	4,791.0	-110.02	-178.8	-1,554.4	436.7	0.00	0.00	0.00
SHANNON										
5,166.5	23.52	263.44	4,852.0	-171.00	-181.8	-1,580.8	444.1	0.00	0.00	0.00
5,200.0	23.52	263.44	4,882.7	-201.71	-183.3	-1,594.1	447.8	0.00	0.00	0.00
5,300.0	23.52	263.44	4,974.4	-293.40	-187.9	-1,633.7	459.0	0.00	0.00	0.00
5,400.0	23.52	263.44	5,066.1	-385.09	-192.5	-1,673.4	470.1	0.00	0.00	0.00
5,500.0	23.52	263.44	5,157.8	-476.78	-197.0	-1,713.0	481.3	0.00	0.00	0.00
END OF TANGENT										
5,591.4	23.52	263.44	5,241.6	-560.60	-201.2	-1,749.3	491.5	0.00	0.00	0.00
5,600.0	23.35	263.44	5,249.5	-568.47	-201.6	-1,752.7	492.4	2.00	-2.00	0.00
5,700.0	21.35	263.44	5,342.0	-660.95	-205.9	-1,790.5	503.0	2.00	-2.00	0.00
5,800.0	19.35	263.44	5,435.7	-754.71	-209.9	-1,825.0	512.7	2.00	-2.00	0.00
5,900.0	17.35	263.44	5,530.6	-849.62	-213.5	-1,856.3	521.5	2.00	-2.00	0.00
6,000.0	15.35	263.44	5,626.6	-945.57	-216.7	-1,884.3	529.4	2.00	-2.00	0.00
6,100.0	13.35	263.44	5,723.4	-1,042.44	-219.6	-1,908.9	536.3	2.00	-2.00	0.00
6,200.0	11.35	263.44	5,821.1	-1,140.12	-222.0	-1,930.1	542.3	2.00	-2.00	0.00
6,300.0	9.35	263.44	5,919.5	-1,238.49	-224.0	-1,948.0	547.3	2.00	-2.00	0.00
6,400.0	7.35	263.44	6,018.4	-1,337.42	-225.7	-1,962.4	551.3	2.00	-2.00	0.00
6,500.0	5.35	263.44	6,117.8	-1,436.80	-227.0	-1,973.4	554.4	2.00	-2.00	0.00
6,600.0	3.35	263.44	6,217.5	-1,536.51	-227.8	-1,980.9	556.5	2.00	-2.00	0.00
6,700.0	1.35	263.44	6,317.4	-1,636.42	-228.3	-1,985.0	557.7	2.00	-2.00	0.00
EOD TO VERTICAL										
6,767.6	0.00	0.00	6,385.0	-1,704.00	-228.4	-1,985.8	557.9	2.00	-2.00	0.00
KOP (10°/100ft BUR)										
6,797.6	0.00	0.00	6,415.0	-1,734.00	-228.4	-1,985.8	557.9	0.00	0.00	0.00
6,800.0	0.24	180.18	6,417.4	-1,736.41	-228.4	-1,985.8	557.9	10.00	10.00	0.00
6,900.0	10.24	180.18	6,516.9	-1,835.87	-237.5	-1,985.8	566.9	10.00	10.00	0.00
7,000.0	20.24	180.18	6,613.2	-1,932.23	-263.8	-1,985.9	592.8	10.00	10.00	0.00
7,100.0	30.24	180.18	6,703.6	-2,022.57	-306.4	-1,986.0	634.8	10.00	10.00	0.00
7,200.0	40.24	180.18	6,785.1	-2,104.14	-364.0	-1,986.2	691.6	10.00	10.00	0.00
7,300.0	50.24	180.18	6,855.5	-2,174.47	-434.9	-1,986.4	761.6	10.00	10.00	0.00
NIOBRARA										
7,304.0	50.64	180.18	6,858.0	-2,177.00	-438.0	-1,986.5	764.6	10.00	10.00	0.00
7,400.0	60.24	180.18	6,912.4	-2,231.41	-517.0	-1,986.7	842.5	10.00	10.00	0.00
7,500.0	70.24	180.18	6,954.2	-2,273.25	-607.6	-1,987.0	932.0	10.00	10.00	0.00
7,600.0	80.24	180.18	6,979.7	-2,298.70	-704.2	-1,987.3	1,027.2	10.00	10.00	0.00
LANDING PNT - CS-SCOTT 3-1-13										
7,697.7	90.00	180.18	6,988.0	-2,307.00	-801.4	-1,987.6	1,123.1	10.00	10.00	0.00
7,700.0	90.00	180.18	6,988.0	-2,307.00	-803.7	-1,987.6	1,125.4	0.00	0.00	0.00
7,800.0	90.00	180.18	6,988.0	-2,307.00	-903.7	-1,987.9	1,224.0	0.00	0.00	0.00
7,900.0	90.00	180.18	6,988.0	-2,307.00	-1,003.7	-1,988.2	1,322.7	0.00	0.00	0.00
8,000.0	90.00	180.18	6,988.0	-2,307.00	-1,103.7	-1,988.5	1,421.3	0.00	0.00	0.00
8,100.0	90.00	180.18	6,988.0	-2,307.00	-1,203.7	-1,988.8	1,520.0	0.00	0.00	0.00
8,200.0	90.00	180.18	6,988.0	-2,307.00	-1,303.7	-1,989.1	1,618.6	0.00	0.00	0.00
8,300.0	90.00	180.18	6,988.0	-2,307.00	-1,403.7	-1,989.5	1,717.2	0.00	0.00	0.00
8,400.0	90.00	180.18	6,988.0	-2,306.99	-1,503.7	-1,989.8	1,815.9	0.00	0.00	0.00
8,500.0	90.00	180.18	6,988.0	-2,306.99	-1,603.7	-1,990.1	1,914.5	0.00	0.00	0.00

Planning Report



Database:	EDM 5000.1 Single User Db	Local Co-ordinate Reference:	Well CS-SCOTT 3-1-13
Company:	EXTRACTION OIL & GAS	TVD Reference:	KB-EST @ 4681.0usft (Original Well Elev)
Project:	WELD COUNTY, COLORADO (NAD 83)	MD Reference:	KB-EST @ 4681.0usft (Original Well Elev)
Site:	SW SE SEC 36 T6N R66W 6th P.M.	North Reference:	True
Well:	CS-SCOTT 3-1-13	Survey Calculation Method:	Minimum Curvature
Wellbore:	ORIGINAL WELLBORE		
Design:	PROPOSAL #2		

Planned Survey										
MD (usft)	Inc (°)	Azi (°)	TVD (usft)	SS (usft)	+N/-S (usft)	+E/-W (usft)	Vertical Section (usft)	Dogleg Rate (°/100usft)	Build Rate (°/100usft)	Turn Rate (°/100usft)
8,600.0	90.00	180.18	6,988.0	-2,306.99	-1,703.7	-1,990.4	2,013.2	0.00	0.00	0.00
8,700.0	90.00	180.18	6,988.0	-2,306.99	-1,803.7	-1,990.7	2,111.8	0.00	0.00	0.00
8,800.0	90.00	180.18	6,988.0	-2,306.99	-1,903.7	-1,991.0	2,210.4	0.00	0.00	0.00
8,900.0	90.00	180.18	6,988.0	-2,306.99	-2,003.7	-1,991.3	2,309.1	0.00	0.00	0.00
9,000.0	90.00	180.18	6,988.0	-2,306.99	-2,103.7	-1,991.7	2,407.7	0.00	0.00	0.00
9,100.0	90.00	180.18	6,988.0	-2,306.99	-2,203.7	-1,992.0	2,506.3	0.00	0.00	0.00
9,200.0	90.00	180.18	6,988.0	-2,306.99	-2,303.7	-1,992.3	2,605.0	0.00	0.00	0.00
9,300.0	90.00	180.18	6,988.0	-2,306.99	-2,403.7	-1,992.6	2,703.6	0.00	0.00	0.00
9,400.0	90.00	180.18	6,988.0	-2,306.99	-2,503.7	-1,992.9	2,802.3	0.00	0.00	0.00
9,500.0	90.00	180.18	6,988.0	-2,306.99	-2,603.7	-1,993.2	2,900.9	0.00	0.00	0.00
9,600.0	90.00	180.18	6,988.0	-2,306.99	-2,703.7	-1,993.6	2,999.5	0.00	0.00	0.00
9,700.0	90.00	180.18	6,988.0	-2,306.99	-2,803.7	-1,993.9	3,098.2	0.00	0.00	0.00
9,800.0	90.00	180.18	6,988.0	-2,306.99	-2,903.7	-1,994.2	3,196.8	0.00	0.00	0.00
9,900.0	90.00	180.18	6,988.0	-2,306.99	-3,003.7	-1,994.5	3,295.5	0.00	0.00	0.00
10,000.0	90.00	180.18	6,988.0	-2,306.98	-3,103.7	-1,994.8	3,394.1	0.00	0.00	0.00
10,100.0	90.00	180.18	6,988.0	-2,306.98	-3,203.7	-1,995.2	3,492.7	0.00	0.00	0.00
10,200.0	90.00	180.18	6,988.0	-2,306.98	-3,303.7	-1,995.5	3,591.4	0.00	0.00	0.00
10,300.0	90.00	180.18	6,988.0	-2,306.98	-3,403.7	-1,995.8	3,690.0	0.00	0.00	0.00
10,400.0	90.00	180.18	6,988.0	-2,306.98	-3,503.7	-1,996.1	3,788.7	0.00	0.00	0.00
10,500.0	90.00	180.18	6,988.0	-2,306.98	-3,603.7	-1,996.4	3,887.3	0.00	0.00	0.00
10,600.0	90.00	180.18	6,988.0	-2,306.98	-3,703.7	-1,996.8	3,985.9	0.00	0.00	0.00
10,700.0	90.00	180.19	6,988.0	-2,306.98	-3,803.7	-1,997.1	4,084.6	0.00	0.00	0.00
10,800.0	90.00	180.19	6,988.0	-2,306.98	-3,903.7	-1,997.4	4,183.2	0.00	0.00	0.00
10,900.0	90.00	180.19	6,988.0	-2,306.98	-4,003.7	-1,997.7	4,281.9	0.00	0.00	0.00
11,000.0	90.00	180.19	6,988.0	-2,306.98	-4,103.7	-1,998.1	4,380.5	0.00	0.00	0.00
11,100.0	90.00	180.19	6,988.0	-2,306.98	-4,203.7	-1,998.4	4,479.1	0.00	0.00	0.00
11,200.0	90.00	180.19	6,988.0	-2,306.98	-4,303.7	-1,998.7	4,577.8	0.00	0.00	0.00
11,300.0	90.00	180.19	6,988.0	-2,306.98	-4,403.7	-1,999.0	4,676.4	0.00	0.00	0.00
11,400.0	90.00	180.19	6,988.0	-2,306.98	-4,503.7	-1,999.4	4,775.1	0.00	0.00	0.00
11,500.0	90.00	180.19	6,988.0	-2,306.98	-4,603.7	-1,999.7	4,873.7	0.00	0.00	0.00
11,600.0	90.00	180.19	6,988.0	-2,306.98	-4,703.7	-2,000.0	4,972.3	0.00	0.00	0.00
11,700.0	90.00	180.19	6,988.0	-2,306.98	-4,803.7	-2,000.3	5,071.0	0.00	0.00	0.00
11,800.0	90.00	180.19	6,988.0	-2,306.98	-4,903.7	-2,000.7	5,169.6	0.00	0.00	0.00
11,900.0	90.00	180.19	6,988.0	-2,306.98	-5,003.7	-2,001.0	5,268.3	0.00	0.00	0.00
12,000.0	90.00	180.19	6,988.0	-2,306.98	-5,103.7	-2,001.3	5,366.9	0.00	0.00	0.00
12,100.0	90.00	180.19	6,988.0	-2,306.98	-5,203.7	-2,001.7	5,465.5	0.00	0.00	0.00
12,200.0	90.00	180.19	6,988.0	-2,306.98	-5,303.7	-2,002.0	5,564.2	0.00	0.00	0.00
12,300.0	90.00	180.19	6,988.0	-2,306.98	-5,403.7	-2,002.3	5,662.8	0.00	0.00	0.00
12,400.0	90.00	180.19	6,988.0	-2,306.98	-5,503.7	-2,002.6	5,761.5	0.00	0.00	0.00
12,500.0	90.00	180.19	6,988.0	-2,306.98	-5,603.7	-2,003.0	5,860.1	0.00	0.00	0.00
12,600.0	90.00	180.19	6,988.0	-2,306.98	-5,703.7	-2,003.3	5,958.7	0.00	0.00	0.00
12,700.0	90.00	180.19	6,988.0	-2,306.98	-5,803.7	-2,003.6	6,057.4	0.00	0.00	0.00
12,800.0	90.00	180.19	6,988.0	-2,306.98	-5,903.7	-2,004.0	6,156.0	0.00	0.00	0.00
12,900.0	90.00	180.19	6,988.0	-2,306.98	-6,003.7	-2,004.3	6,254.7	0.00	0.00	0.00
13,000.0	90.00	180.19	6,988.0	-2,306.98	-6,103.7	-2,004.6	6,353.3	0.00	0.00	0.00
13,100.0	90.00	180.19	6,988.0	-2,306.98	-6,203.7	-2,005.0	6,452.0	0.00	0.00	0.00
13,200.0	90.00	180.19	6,988.0	-2,306.98	-6,303.7	-2,005.3	6,550.6	0.00	0.00	0.00
13,300.0	90.00	180.19	6,988.0	-2,306.98	-6,403.7	-2,005.6	6,649.2	0.00	0.00	0.00
13,400.0	90.00	180.19	6,988.0	-2,306.98	-6,503.7	-2,006.0	6,747.9	0.00	0.00	0.00
13,500.0	90.00	180.19	6,988.0	-2,306.98	-6,603.7	-2,006.3	6,846.5	0.00	0.00	0.00
13,600.0	90.00	180.19	6,988.0	-2,306.98	-6,703.7	-2,006.6	6,945.2	0.00	0.00	0.00
13,700.0	90.00	180.19	6,988.0	-2,306.98	-6,803.7	-2,007.0	7,043.8	0.00	0.00	0.00
13,800.0	90.00	180.19	6,988.0	-2,306.98	-6,903.7	-2,007.3	7,142.4	0.00	0.00	0.00
13,900.0	90.00	180.19	6,988.0	-2,306.98	-7,003.7	-2,007.6	7,241.1	0.00	0.00	0.00

Planning Report



Database:	EDM 5000.1 Single User Db	Local Co-ordinate Reference:	Well CS-SCOTT 3-1-13
Company:	EXTRACTION OIL & GAS	TVD Reference:	KB-EST @ 4681.0usft (Original Well Elev)
Project:	WELD COUNTY, COLORADO (NAD 83)	MD Reference:	KB-EST @ 4681.0usft (Original Well Elev)
Site:	SW SE SEC 36 T6N R66W 6th P.M.	North Reference:	True
Well:	CS-SCOTT 3-1-13	Survey Calculation Method:	Minimum Curvature
Wellbore:	ORIGINAL WELLBORE		
Design:	PROPOSAL #2		

Planned Survey										
MD (usft)	Inc (°)	Azi (°)	TVD (usft)	SS (usft)	+N/-S (usft)	+E/-W (usft)	Vertical Section (usft)	Dogleg Rate (°/100usft)	Build Rate (°/100usft)	Turn Rate (°/100usft)
14,000.0	90.00	180.19	6,988.0	-2,306.98	-7,103.7	-2,008.0	7,339.7	0.00	0.00	0.00
14,100.0	90.00	180.19	6,988.0	-2,306.98	-7,203.7	-2,008.3	7,438.4	0.00	0.00	0.00
14,200.0	90.00	180.19	6,988.0	-2,306.98	-7,303.7	-2,008.7	7,537.0	0.00	0.00	0.00
14,300.0	90.00	180.19	6,988.0	-2,306.98	-7,403.7	-2,009.0	7,635.7	0.00	0.00	0.00
14,400.0	90.00	180.19	6,988.0	-2,306.98	-7,503.7	-2,009.3	7,734.3	0.00	0.00	0.00
14,500.0	90.00	180.19	6,988.0	-2,306.98	-7,603.7	-2,009.7	7,832.9	0.00	0.00	0.00
14,600.0	90.00	180.19	6,988.0	-2,306.98	-7,703.7	-2,010.0	7,931.6	0.00	0.00	0.00
14,700.0	90.00	180.19	6,988.0	-2,306.98	-7,803.7	-2,010.3	8,030.2	0.00	0.00	0.00
14,800.0	90.00	180.20	6,988.0	-2,306.98	-7,903.7	-2,010.7	8,128.9	0.00	0.00	0.00
14,900.0	90.00	180.20	6,988.0	-2,306.98	-8,003.7	-2,011.0	8,227.5	0.00	0.00	0.00
15,000.0	90.00	180.20	6,988.0	-2,306.98	-8,103.7	-2,011.4	8,326.2	0.00	0.00	0.00
15,100.0	90.00	180.20	6,988.0	-2,306.98	-8,203.7	-2,011.7	8,424.8	0.00	0.00	0.00
15,200.0	90.00	180.20	6,988.0	-2,306.98	-8,303.7	-2,012.1	8,523.4	0.00	0.00	0.00
15,300.0	90.00	180.20	6,988.0	-2,306.98	-8,403.7	-2,012.4	8,622.1	0.00	0.00	0.00
15,400.0	90.00	180.20	6,988.0	-2,306.98	-8,503.7	-2,012.7	8,720.7	0.00	0.00	0.00
15,500.0	90.00	180.20	6,988.0	-2,306.98	-8,603.7	-2,013.1	8,819.4	0.00	0.00	0.00
15,600.0	90.00	180.20	6,988.0	-2,306.98	-8,703.7	-2,013.4	8,918.0	0.00	0.00	0.00
15,700.0	90.00	180.20	6,988.0	-2,306.98	-8,803.7	-2,013.8	9,016.7	0.00	0.00	0.00
15,800.0	90.00	180.20	6,988.0	-2,306.98	-8,903.7	-2,014.1	9,115.3	0.00	0.00	0.00
15,900.0	90.00	180.20	6,988.0	-2,306.98	-9,003.7	-2,014.5	9,213.9	0.00	0.00	0.00
16,000.0	90.00	180.20	6,988.0	-2,306.98	-9,103.7	-2,014.8	9,312.6	0.00	0.00	0.00
16,100.0	90.00	180.20	6,988.0	-2,306.98	-9,203.7	-2,015.1	9,411.2	0.00	0.00	0.00
16,200.0	90.00	180.20	6,988.0	-2,306.98	-9,303.7	-2,015.5	9,509.9	0.00	0.00	0.00
16,300.0	90.00	180.20	6,988.0	-2,306.98	-9,403.7	-2,015.8	9,608.5	0.00	0.00	0.00
16,400.0	90.00	180.20	6,988.0	-2,306.98	-9,503.7	-2,016.2	9,707.2	0.00	0.00	0.00
16,500.0	90.00	180.20	6,988.0	-2,306.98	-9,603.7	-2,016.5	9,805.8	0.00	0.00	0.00
16,600.0	90.00	180.20	6,988.0	-2,306.99	-9,703.7	-2,016.9	9,904.5	0.00	0.00	0.00
16,700.0	90.00	180.20	6,988.0	-2,306.99	-9,803.7	-2,017.2	10,003.1	0.00	0.00	0.00
16,800.0	90.00	180.20	6,988.0	-2,306.99	-9,903.7	-2,017.6	10,101.7	0.00	0.00	0.00
16,900.0	90.00	180.20	6,988.0	-2,306.99	-10,003.7	-2,017.9	10,200.4	0.00	0.00	0.00
17,000.0	90.00	180.20	6,988.0	-2,306.99	-10,103.7	-2,018.3	10,299.0	0.00	0.00	0.00
17,100.0	90.00	180.20	6,988.0	-2,306.99	-10,203.7	-2,018.6	10,397.7	0.00	0.00	0.00
17,200.0	90.00	180.20	6,988.0	-2,306.99	-10,303.7	-2,019.0	10,496.3	0.00	0.00	0.00
17,300.0	90.00	180.20	6,988.0	-2,306.99	-10,403.7	-2,019.3	10,595.0	0.00	0.00	0.00
17,400.0	90.00	180.20	6,988.0	-2,306.99	-10,503.7	-2,019.7	10,693.6	0.00	0.00	0.00
17,500.0	90.00	180.20	6,988.0	-2,306.99	-10,603.7	-2,020.0	10,792.3	0.00	0.00	0.00
17,600.0	90.00	180.20	6,988.0	-2,306.99	-10,703.7	-2,020.4	10,890.9	0.00	0.00	0.00
17,700.0	90.00	180.20	6,988.0	-2,306.99	-10,803.7	-2,020.7	10,989.5	0.00	0.00	0.00
17,800.0	90.00	180.20	6,988.0	-2,306.99	-10,903.7	-2,021.1	11,088.2	0.00	0.00	0.00
17,900.0	90.00	180.20	6,988.0	-2,306.99	-11,003.7	-2,021.4	11,186.8	0.00	0.00	0.00
18,000.0	90.00	180.20	6,988.0	-2,306.99	-11,103.7	-2,021.8	11,285.5	0.00	0.00	0.00
18,100.0	90.00	180.20	6,988.0	-2,306.99	-11,203.7	-2,022.2	11,384.1	0.00	0.00	0.00
18,200.0	90.00	180.20	6,988.0	-2,307.00	-11,303.7	-2,022.5	11,482.8	0.00	0.00	0.00
18,300.0	90.00	180.20	6,988.0	-2,307.00	-11,403.7	-2,022.9	11,581.4	0.00	0.00	0.00
18,400.0	90.00	180.20	6,988.0	-2,307.00	-11,503.7	-2,023.2	11,680.1	0.00	0.00	0.00
18,500.0	90.00	180.20	6,988.0	-2,307.00	-11,603.7	-2,023.6	11,778.7	0.00	0.00	0.00
18,600.0	90.00	180.20	6,988.0	-2,307.00	-11,703.7	-2,023.9	11,877.3	0.00	0.00	0.00
18,700.0	90.00	180.20	6,988.0	-2,307.00	-11,803.7	-2,024.3	11,976.0	0.00	0.00	0.00
18,800.0	90.00	180.20	6,988.0	-2,307.00	-11,903.7	-2,024.6	12,074.6	0.00	0.00	0.00
BHL - CS-SCOTT 3-1-13 (P2)										
18,809.2	90.00	180.20	6,988.0	-2,307.00	-11,912.9	-2,024.7	12,083.7	0.00	0.00	0.00

Database:	EDM 5000.1 Single User Db	Local Co-ordinate Reference:	Well CS-SCOTT 3-1-13
Company:	EXTRACTION OIL & GAS	TVD Reference:	KB-EST @ 4681.0usft (Original Well Elev)
Project:	WELD COUNTY, COLORADO (NAD 83)	MD Reference:	KB-EST @ 4681.0usft (Original Well Elev)
Site:	SW SE SEC 36 T6N R66W 6th P.M.	North Reference:	True
Well:	CS-SCOTT 3-1-13	Survey Calculation Method:	Minimum Curvature
Wellbore:	ORIGINAL WELLBORE		
Design:	PROPOSAL #2		

Formations

MD (usft)	TVD (usft)	Name	Lithology	Dip (°)	Dip Direction (°)
3,856.7	3,651.0	PARKMAN			
4,691.0	4,416.0	SUSSEX			
5,166.5	4,852.0	SHANNON			
7,304.0	6,858.0	NIOBRARA			

Plan Annotations

MD (usft)	TVD (usft)	Local Coordinates		Comment
		+N/-S (usft)	+E/-W (usft)	
600.0	600.0	0.0	0.0	START NUDGE (2°/100ft BUR)
1,776.2	1,743.4	-27.2	-236.5	EOB TO 23.52° INC
1,837.9	1,800.0	-30.0	-261.0	9 5/8" SURFACE CSG
5,591.4	5,241.6	-201.2	-1,749.3	END OF TANGENT
6,767.6	6,385.0	-228.4	-1,985.8	EOD TO VERTICAL
6,797.6	6,415.0	-228.4	-1,985.8	KOP (10°/100ft BUR)
7,697.7	6,988.0	-801.4	-1,987.6	LANDING PNT - CS-SCOTT 3-1-13
18,809.2	6,988.0	-11,912.9	-2,024.7	BHL - CS-SCOTT 3-1-13 (P2)