

# LEGEND:

- = 90° SYMBOL
- = PROPOSED WELLHEAD.
- = TARGET BOTTOM HOLE.
- = TOP OF PRODUCTION.
- = SECTION CORNERS LOCATED.

T10N, R57W, 6th P.M.

1917 Brass Cap,  
1.0' High  
Lat: 40.817086°  
Long: 103.803497°

R  
58  
W

S89°44'58"E - 2560.47' (Meas.)

S89°50'21"E - 2664.91' (Meas.)

2011 Alum. Cap,  
#28285, 0.2' High  
Lat: 40.817050°  
Long: 103.794247°

1917 Brass Cap,  
Flush W/ Ground  
Lat: 40.817025°  
Long: 103.784622°

LOT 1

LOT 2

LOT 3

LOT 4

2012 Alum. Cap,  
Flush W/ Ground  
Lat: 40.809803°  
Long: 103.803386°

HORSETAIL #30E-3135

Elev. Ungraded Ground = 4812.3'

Top of Production 30

1917 Brass Cap,  
0.8' High  
Lat: 40.809725°  
Long: 103.784528°

NOTE:  
THE PROPOSED TARGET BOTTOM HOLE FOR  
THIS WELL IS LOCATED IN LOT 4 OF SECTION  
31, T10N, R57W, 6th P.M. AT 100' FSL 660'  
FWL. IT BEARS S00°04'16"E 7801.28' FROM  
THE PROPOSED TOP OF PRODUCTION.

1917 Brass Cap,  
1.8' High  
Lat: 40.802467°  
Long: 103.794042°

1917 Brass Cap,  
0.4' High  
Lat: 40.802425°  
Long: 103.784433°

2010 Alum. Cap,  
Flush W/ Ground  
Lat: 40.802556°  
Long: 103.803122°

N89°17'46"W - 2514.76' (Meas.)

N89°42'21"W - 2660.62' (Meas.)

Target Bottom Hole

PDOP = 1.3



NAD 83 (TOP OF PRODUCTION)	NAD 83 (SURFACE LOCATION)
LATITUDE = 40°48'34.23" (40.809508)	LATITUDE = 40°48'38.04" (40.810567)
LONGITUDE = 103°48'01.74" (103.800483)	LONGITUDE = 103°48'04.05" (103.801125)
NAD 27 (TOP OF PRODUCTION)	NAD 27 (SURFACE LOCATION)
LATITUDE = 40°48'34.28" (40.809522)	LATITUDE = 40°48'38.09" (40.810581)
LONGITUDE = 103°47'59.94" (103.799983)	LONGITUDE = 103°48'02.24" (103.800622)

**BASIS OF BEARINGS**  
BASIS OF BEARINGS IS A G.P.S. OBSERVATION

**BASIS OF ELEVATION**

SPOT ELEVATION LOCATED AT THE NORTHEAST CORNER OF SECTION 15, T9N, R58W, 6th P.M. TAKEN FROM THE GATEHOOK SPRING, QUADRANGLE, COLORADO, WELD COUNTY, 7.5 MINUTE QUAD (TOPOGRAPHIC MAP) PUBLISHED BY THE UNITED STATES DEPARTMENT OF THE INTERIOR, GEOLOGICAL SURVEY. SAID ELEVATION IS MARKED AS BEING 4679 FEET.



**UELS, LLC**  
Corporate Office \* 85 South 200 East  
Vernal, UT 84078 \* (435) 789-1017



**CERTIFICATE**  
THIS IS TO CERTIFY THAT THE ABOVE PLAT WAS PREPARED FROM FIELD NOTES OF ACTUAL SURVEYS MADE BY ME OR UNDER MY SUPERVISION AND THAT THE SAME ARE TRUE AND CORRECT TO THE BEST OF MY KNOWLEDGE AND BELIEF.

REGISTERED LAND SURVEYOR  
REGISTRATION NO. 28285  
STATE OF COLORADO

**WHITING OIL & GAS CORP.**

**HORSETAIL #30E-3135 (SURFACE HOLE LOCATION)**  
**LOT 2, SECTION 30, T10N, R57W, 6th P.M.**  
**WELD COUNTY, COLORADO**

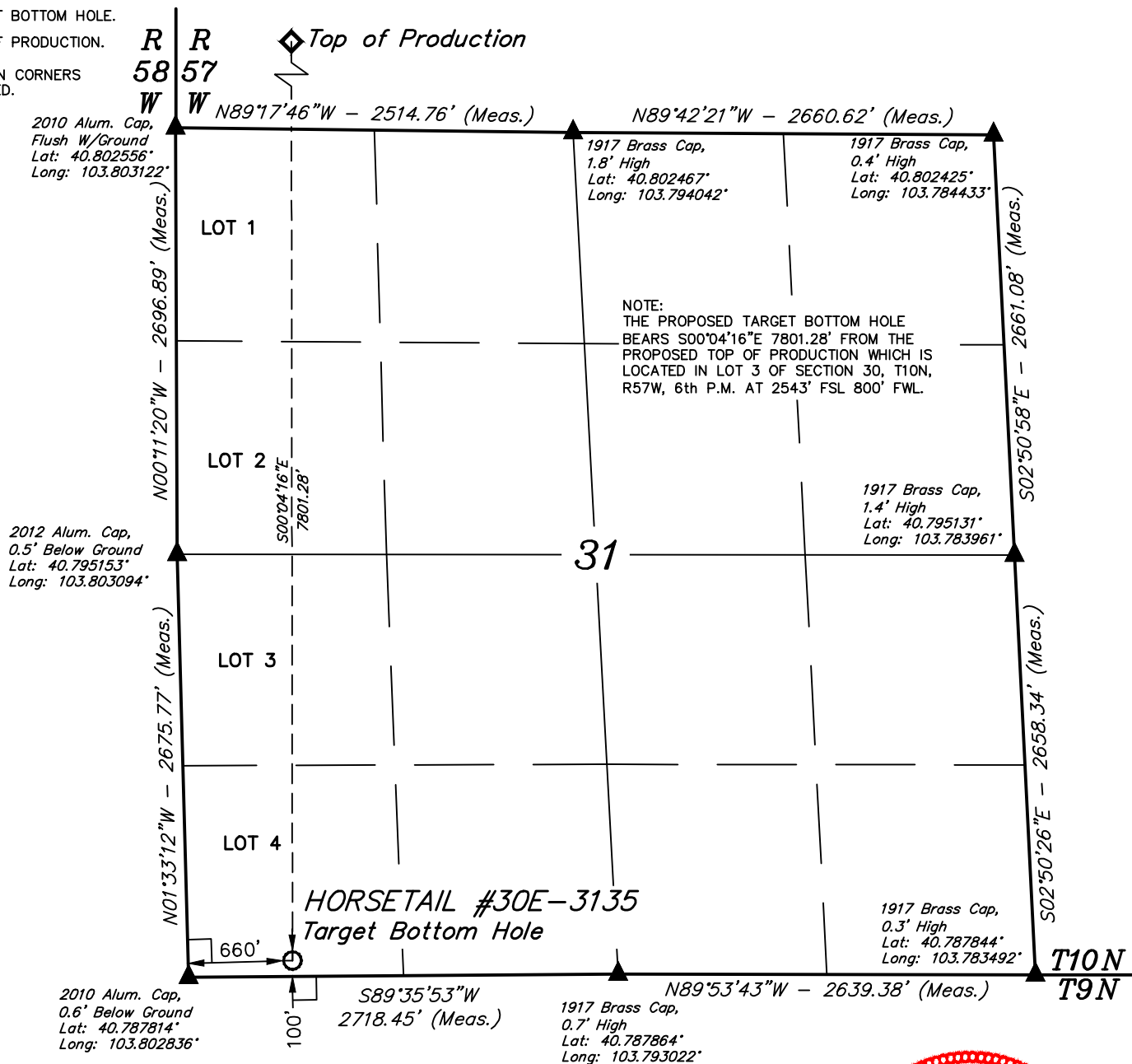
SURVEYED BY: JARED CHRISTOPHER, B.C.	DATE: 04-24-15
DRAWN BY: H.K.W.	DATE DRAWN: 02-18-14
SCALE: 1" = 1000'	REVISED: 11-23-15 J.M.C.

**WELL LOCATION PLAT**

**LEGEND:**

- = 90° SYMBOL  
 ○ = TARGET BOTTOM HOLE.  
 ◇ = TOP OF PRODUCTION.  
 ▲ = SECTION CORNERS LOCATED.

**T10N, R57W, 6th P.M.**



<b>NAD 83 (TARGET BOTTOM HOLE)</b>
LATITUDE = 40°47'17.16" (40.788100)
LONGITUDE = 103°48'01.66" (103.800461)
<b>NAD 27 (TARGET BOTTOM HOLE)</b>
LATITUDE = 40°47'17.21" (40.788114)
LONGITUDE = 103°47'59.86" (103.799961)



**BASIS OF BEARINGS**  
BASIS OF BEARINGS IS A G.P.S. OBSERVATION

**BASIS OF ELEVATION**

SPOT ELEVATION LOCATED AT THE NORTHEAST CORNER OF SECTION 15, T9N, R58W, 6th P.M. TAKEN FROM THE GATEHOOK SPRING, QUADRANGLE, COLORADO, WELD COUNTY, 7.5 MINUTE QUAD (TOPOGRAPHIC MAP) PUBLISHED BY THE UNITED STATES DEPARTMENT OF THE INTERIOR, GEOLOGICAL SURVEY. SAID ELEVATION IS MARKED AS BEING 4679 FEET.



**UELS, LLC**  
Corporate Office \* 85 South 200 East  
Vernal, UT 84078 \* (435) 789-1017



**CERTIFICATE**  
THIS IS TO CERTIFY THAT THE ABOVE PLAT WAS PREPARED FROM FIELD NOTES OF ACTUAL SURVEYS MADE BY ME OR UNDER MY SUPERVISION AND THAT THE SAME ARE TRUE AND CORRECT TO THE BEST OF MY KNOWLEDGE AND BELIEF.

REGISTERED LAND SURVEYOR  
REGISTRATION NO. 28285  
STATE OF COLORADO

**WHITING OIL & GAS CORP.**

**HORSETAIL #30E-3135 (TARGET BOTTOM HOLE)**  
**LOT 4, SECTION 31, T10N, R57W, 6th P.M.**  
**WELD COUNTY, COLORADO**

SURVEYED BY: JARED CHRISTOPHER, B.C.	DATE: 04-24-15
DRAWN BY: H.K.W.	DATE DRAWN: 02-18-14
SCALE: 1" = 1000'	REVISED: 11-23-15 J.M.C.
<b>WELL LOCATION PLAT</b>	