



Remediation Work Plan

11/24/2015

Apache Canyon 26-02

API 05071088130000

Lease # FEE

Lat: 37.061710, Long: -104.964302

Sec. 26, T34S, R68W

1.0 PURPOSE and SCOPE

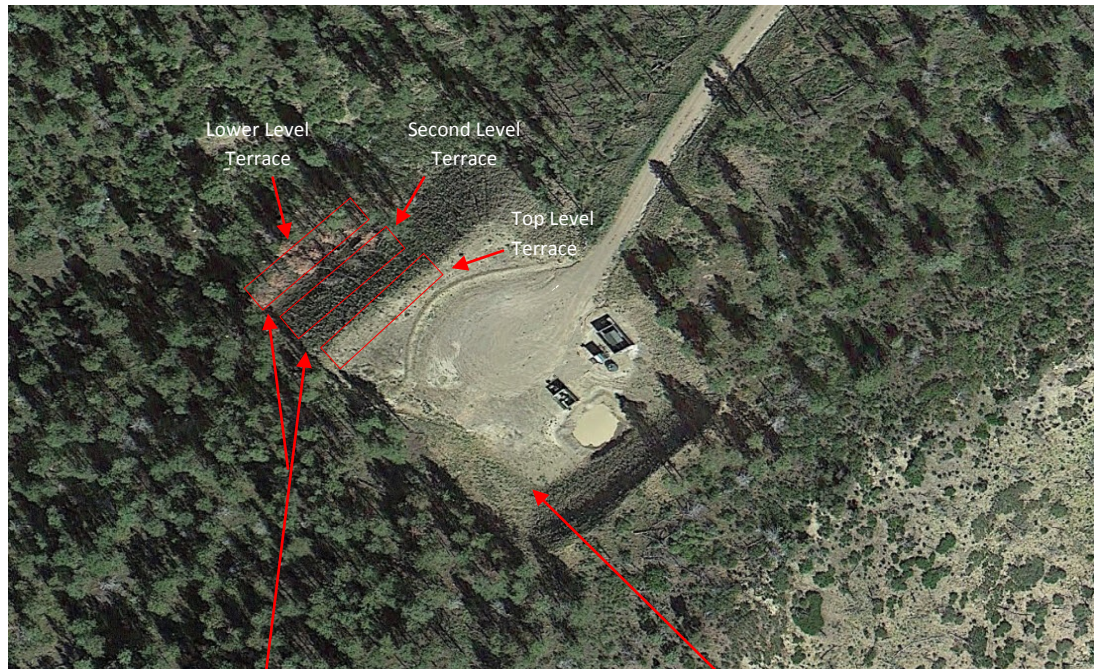
1.1) The purpose of this document is to ensure remediation of the sloughed portion of the pad surface and associated fill slope as required by applicable laws and regulations. This remediation work plan is designed to provide environmentally sound, safe, prudent and specific guidelines. Implementation of Best Management Practices, will return disturbed soils to a level consistent with the surrounding topography and vegetation, prior to disturbance.

2.0 PRE-RECLAMATION SITE INSPECTION

2.1) A site inspection by XTO Energy, Inc. representatives **Brent Beaty, Carl Chavez, Lyndon Harrison, Carl Vialpando, Joseph Garcia, Nick Murlo** took place on **10/28/2015**, to determine a strategy for recovering & stabilizing displaced material from the fill slope.

3.0 PROCEDURES

3.1) Work is proposed to start the week of 6/6/2016 due to hunting restrictions per CPW. No new disturbance will be allowed outside current disturbed areas. Notifications will be provided to the proper agencies via sundry notifications, e-mail, or phone within required time frames.



3.2) Available top soil, typically the top 6", will be stockpiled during remediation, and will be redistributed after completion of earthwork.

3.3) Displaced material from fill slope will be re-contoured back into a stable slope through the use of terraces. Leftover excess material from fill slope after terracing will be placed into cut slope on location. The removal of sharp angular corners and redefinition of natural drainage will be priority allowing for additional contouring, as needed, to aid in erosion control. Remediated areas will be tracked in, leaving the surface as rough as necessary, to provide sufficient root establishment, growth, and stabilization of disturbed areas.

3.4) The proper agencies will be notified before seeding commences. Appropriate certified weed free seed mixes (**determined during onsite inspection**) will be used. **XTO/CPW seed mix: Big Bluestem @ 2.20lbs, Western Wheatgrass @ 2.86lbs, Alfalfa @ 2.86lbs, Orchardgrass @ 2.86lbs, Arizona Fescue @ 3.08lbs, Sideoats Grama @ 2.86lbs, Switchgrass @ 2.86lbs, Quickguard @ 8.50lbs, Little Bluestem @ 2.42lbs, Winterfat @ 1.38lbs, True Mountain Mahogany @ 0.55lbs, Four Wing Saltbush @ 2.20lbs, Antelope Bitterbrush @ 0.55lbs, Mexican Cliffrose @ 0.27, Serviceberry @ 0.55lbs.**

4.0 WEED MANAGEMENT

4.1) Use of approved pesticides/herbicides shall be according to applicable Federal, State and local laws. Management of Invasive and Noxious Weeds, as listed on the COGCC Noxious and Invasive list, will be dealt with in a prompt and environmentally safe manner. Noxious or invasive weeds will be treated using pesticides/herbicides appropriate for the type of weed.

5.0 MONITORING

5.1) Monitoring will be conducted in accordance with COGCC rules and the CDPHE Stormwater General Permit.

APACHE CANYON 26-02
NW NE 26-34S-68W NAD 83
LAT. 37.061710
LONG. 104.964302

