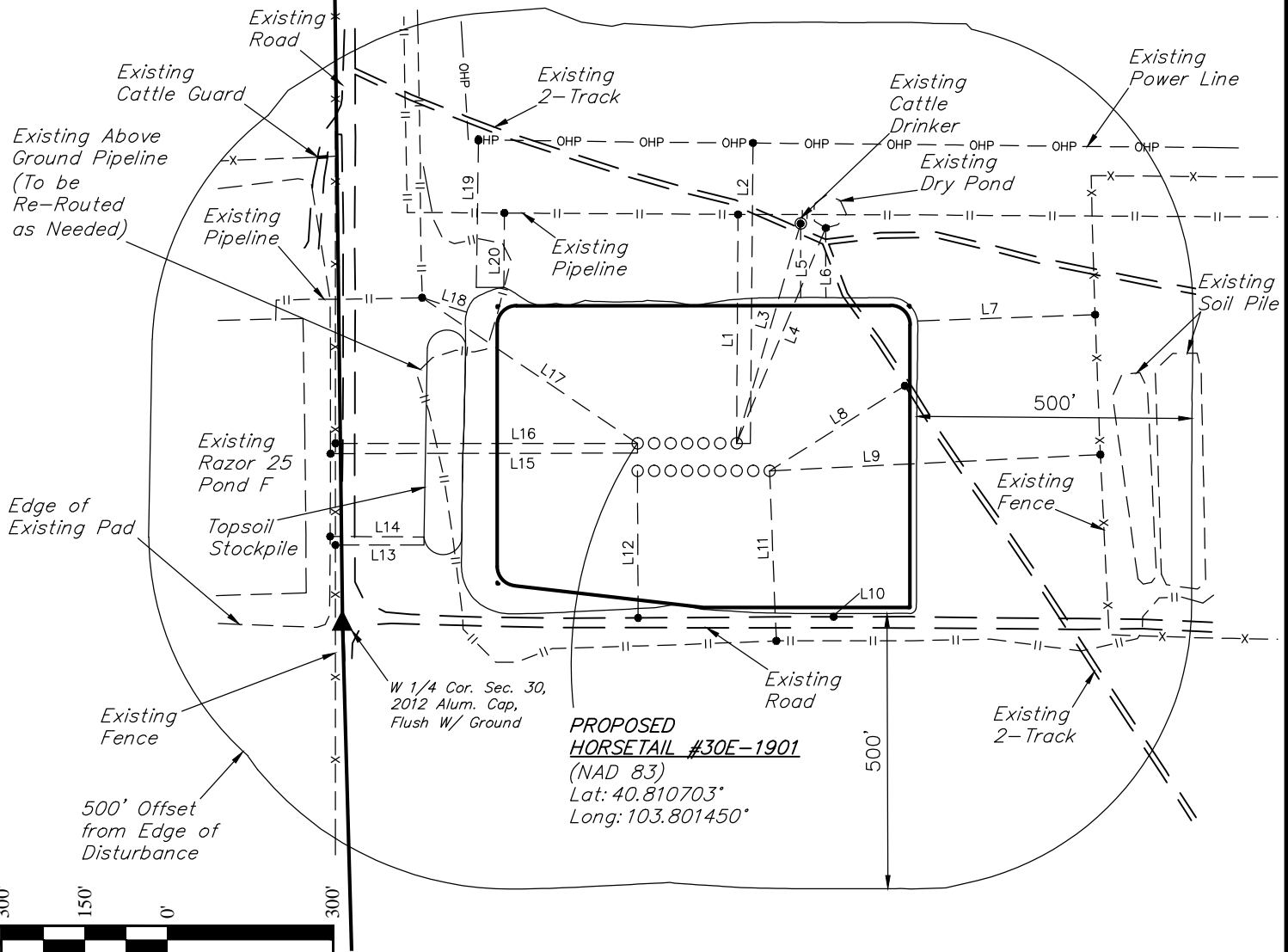


R 58 W
R 57 W
Section 25
Section 30

LINE TABLE			LINE TABLE		
LINE	DIRECTION	LENGTH	LINE	DIRECTION	LENGTH
L1	NORTH	416'	L11	S02°E	309'
L2	N01°E	546'	L12	SOUTH	267'
L3	N16°E	416'	L13	WEST	161'
L4	N23°E	424'	L14	WEST	170'
L5	NORTH	134'	L15	WEST	558'
L6	NORTH	126'	L16	WEST	549'
L7	N88°E	323'	L17	N56°W	472'
L8	N58°E	290'	L18	N72°W	85'
L9	N87°E	602'	L19	N01°E	267'
L10	SOUTH	6'	L20	NORTH	135'



WHITING OIL & GAS CORP.

HORSETAIL #30E-3101, 3134, 3102, 3135, 3103, 3136, 3104, 3137, 3138, 1901, 1934, 1902, 1935, 1903, 1936 & 1904
LOT 2, SECTION 30, T10N, R57W, 6th P.M.
WELD COUNTY, COLORADO

SURVEYED BY: JARED CHRISTOPHER, B.C.	DATE: 04-24-15
DRAWN BY: H.K.W.	DATE DRAWN: 02-18-14
SCALE: 1" = 300'	REVISED: 05-05-15 K.B.

LOCATION DRAWING



UELS, LLC
Corporate Office * 85 South 200 East
Vernal, UT 84078 * (435) 789-1017