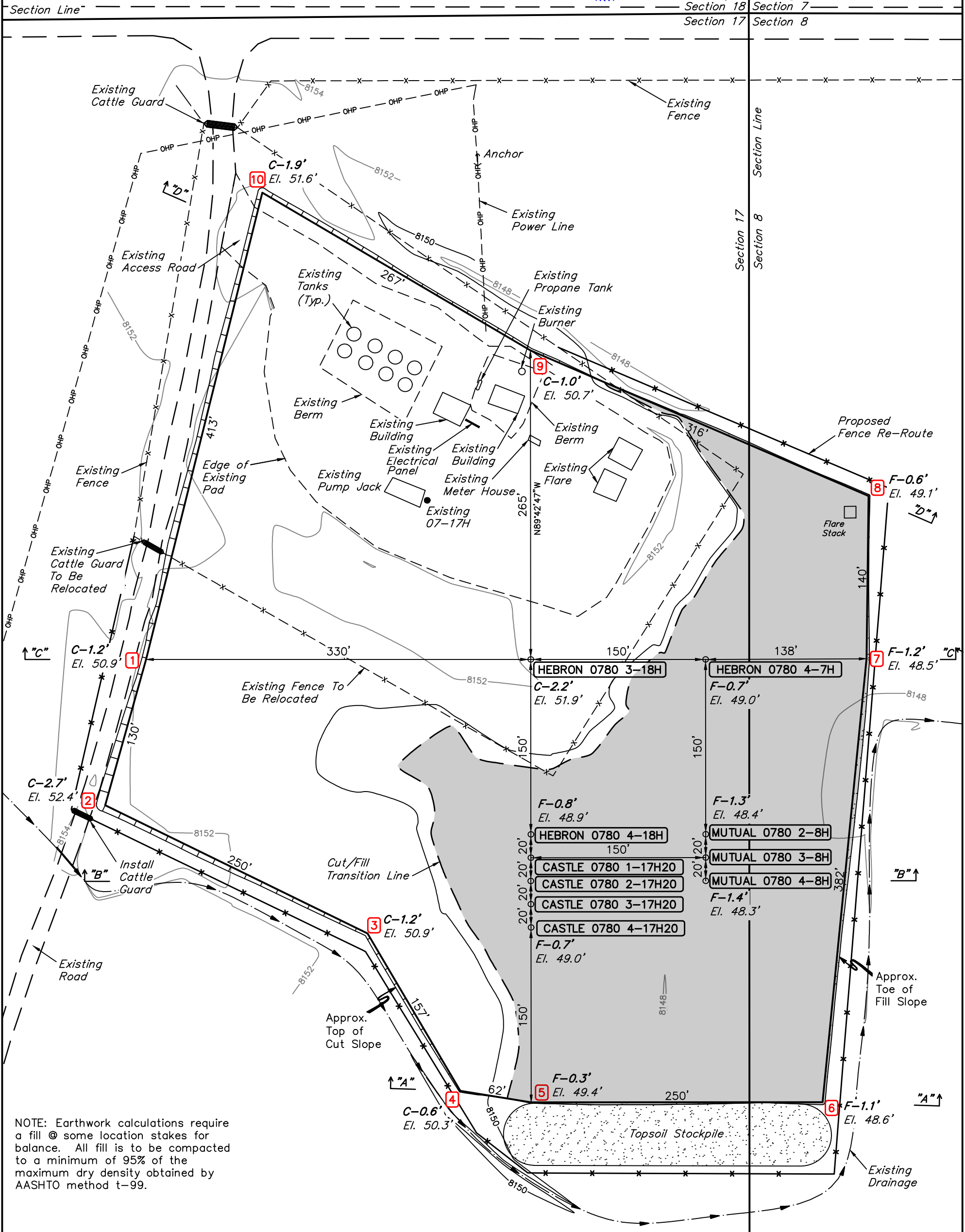
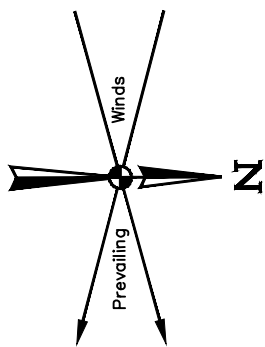


SandRidge Exploration & Production  
CONSTRUCTION LAYOUT FOR  
MUTUAL 17 PAD ON EXISTING MUTUAL 07-17H  
SECTION 17, T7N, R80W, 6th P.M.  
NW 1/4 NW 1/4

FIGURE #1

SCALE: 1" = 80'  
DATE: 03-06-14  
DRAWN BY: J.L.H.  
REVISED: 11-25-15 C.D.L.  
REVISED: 12-22-15 S.S.



NOTE: Earthwork calculations require a fill @ some location stakes for balance. All fill is to be compacted to a minimum of 95% of the maximum dry density obtained by AASHTO method t-99.

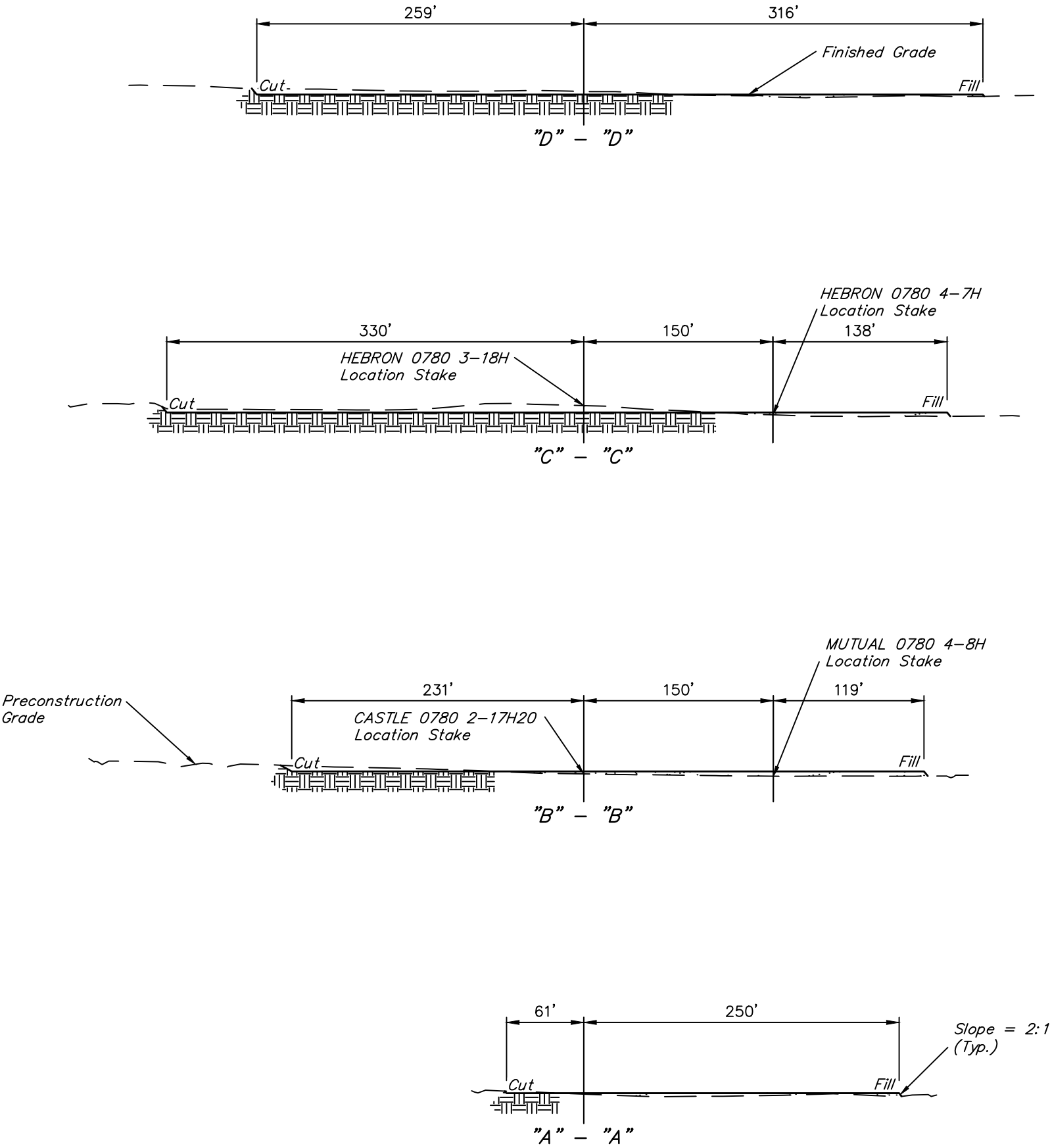
Elev. Ungraded Ground At HEBRON 0780 3-18H Loc. Stake = 8151.9'  
FINISHED GRADE ELEV. AT HEBRON 0780 3-18H LOC. STAKE = 8149.7'

UINTAH ENGINEERING & LAND SURVEYING  
85 So. 200 East \* Vernal, Utah 84078 \* (435) 789-1017

SandRidge Exploration & Production  
CONSTRUCTION LAYOUT CROSS SECTIONS FOR  
MUTUAL 17 PAD ON EXISTING MUTUAL 07-17H  
SECTION 17, T7N, R80W, 6th P.M.  
NW 1/4 NW 1/4

FIGURE #2

1" = 40'  
X-Section  
Scale  
1" = 100'  
DATE: 03-06-14  
DRAWN BY: J.L.H.  
REVISED: 11-25-15 C.D.L.  
REVISED: 12-22-15 S.S.



\* NOTE:  
FILL QUANTITY INCLUDES  
5% FOR COMPACTION

APPROXIMATE YARDAGES

(5") Topsoil Stripping	=	4,160 Cu. Yds.
Remaining Location	=	7,450 Cu. Yds.
TOTAL CUT	=	11,610 CU. YDS.
FILL	=	7,450 CU. YDS.

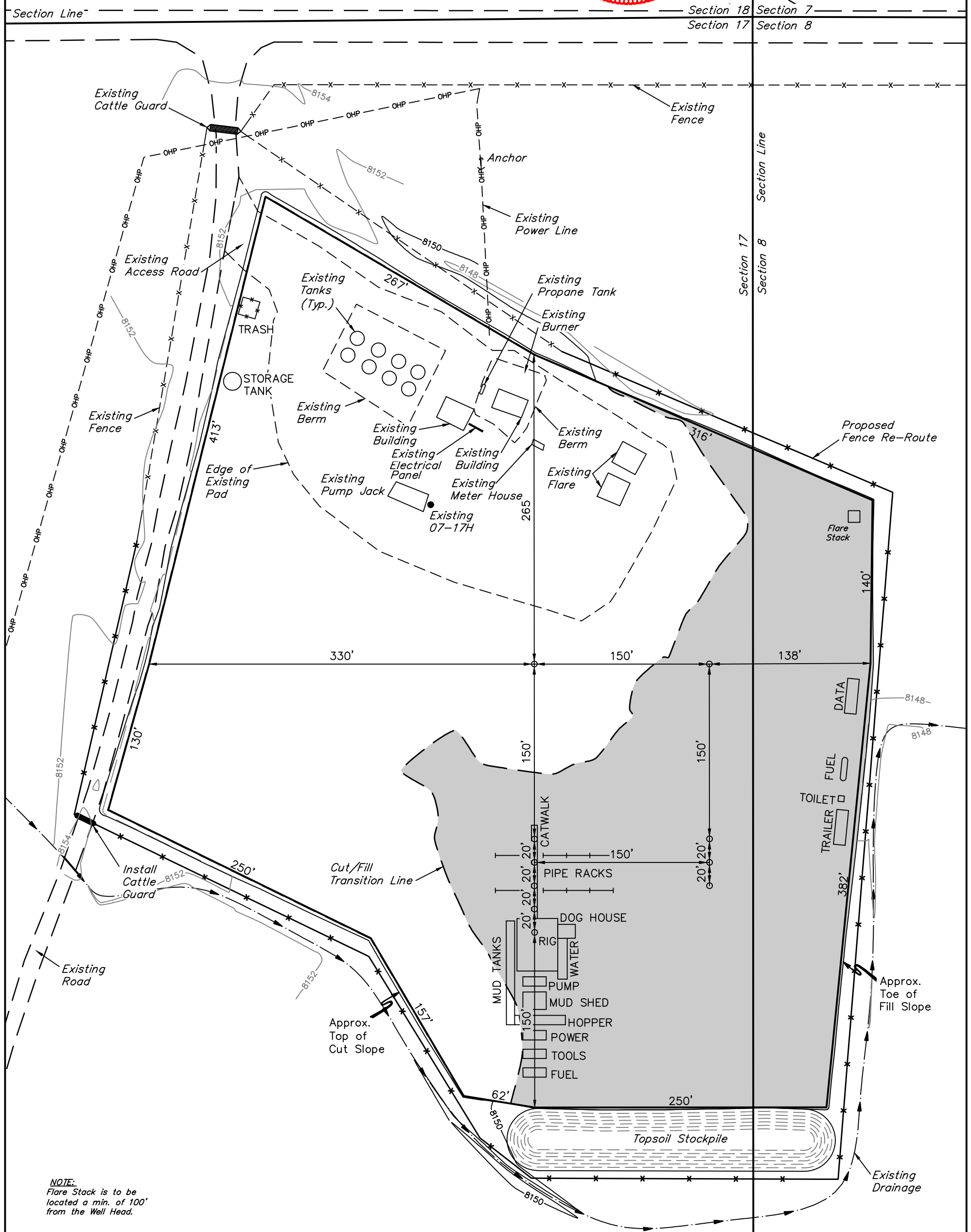
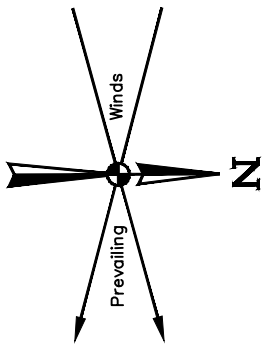
EXCESS MATERIAL	=	4,160 Cu. Yds.
Topsoil	=	4,160 Cu. Yds.
EXCESS UNBALANCE (After Interim Rehabilitation)	=	0 Cu. Yds.

APPROXIMATE ACREAGE  
WELL SITE DISTURBANCE = ± 9.381 ACRES

UINTAH ENGINEERING & LAND SURVEYING  
85 So. 200 East \* Vernal, Utah 84078 \* (435) 789-1017

TYPICAL RIG LAYOUT FOR  
MUTUAL 17 PAD ON EXISTING MUTUAL 07-17H  
SECTION 17, T7N, R80W, 6th P.M.  
NW 1/4 NW 1/4

SCALE: 1" = 80'  
DATE: 03-06-14  
DRAWN BY: J.L.H.  
REVISED: 11-25-15 C.D.L.  
REVISED: 12-22-15 S.S.



UINTAH ENGINEERING & LAND SURVEYING  
85 So. 200 East \* Vernal, Utah 84078 \* (435) 789-1017