

WELL LOCATION PLAT
T7N, R80W, 6th P.M.

EE3 LLC

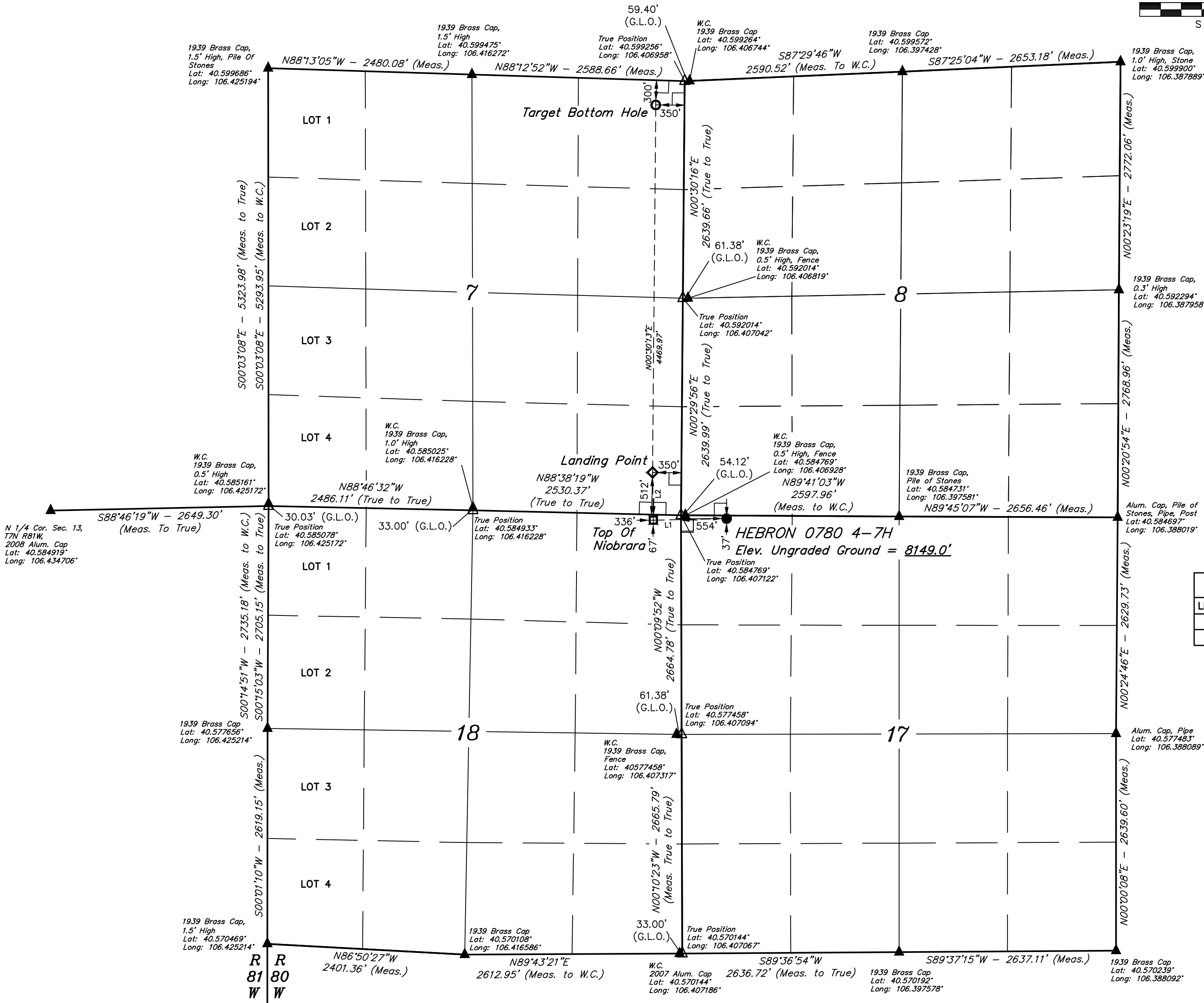
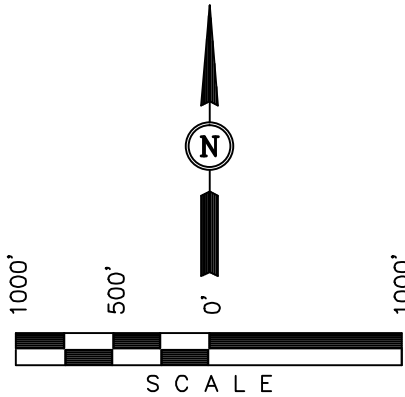
Well location, HEBRON 0780 4-7H, located as shown in the NW 1/4 NW 1/4 of Section 17, T7N, R80W, 6th P.M., JACKSON County, Colorado.

BASIS OF ELEVATION

SPOT ELEVATION AT THE SOUTHEAST CORNER OF SECTION 29, T7N, R80W, 6th P.M., TAKEN FROM THE COALMONT QUADRANGLE, COLORADO, JACKSON COUNTY, 7.5 MINUTE QUAD (TOPOGRAPHIC MAP) PUBLISHED BY THE UNITED STATES DEPARTMENT OF THE INTERIOR, GEOLOGICAL SURVEY. SAID ELEVATION IS MARKED AS BEING 8156 FEET.

BASIS OF BEARINGS

BASIS OF BEARINGS IS A G.P.S. OBSERVATION.



LINE TABLE		
LINE	DIRECTION	LENGTH
L1	S88°46'37"W	890.20'
L2	N00°59'16"W	580.09'

NOTE:
THE PROPOSED WELLHEAD FOR THE
HEBRON 0780 4-7H BEARS
S85°24'25"E 501.87' FROM THE
NORTHWEST COR. SEC. 17 W.C.

- LEGEND:
- 90° SYMBOL
 - PROPOSED WELLHEAD.
 - LANDING POINT.
 - TOP OF NIOBRARA.
 - TARGET BOTTOM HOLE.
 - SECTION CORNERS LOCATED (NAD 83)
 - SECTION CORNERS RE-ESTABLISHED (Not Set on Ground.) (NAD 83)

REVISED: 12-16-15 C.D.L.
REVISED: 12-14-15 C.D.L.

UNTAH ENGINEERING & LAND SURVEYING			
85 SOUTH 200 EAST - VERNAL, UTAH 84078			
(435) 789-1017			
SCALE	1" = 1000'	DATE SURVEYED:	11-19-15
PARTY	CHAD MEIERS, C.J. C.D.L.	DATE DRAWN:	11-23-15
WEATHER	COLD	REFERENCES	G.L.O. PLAT
		FILE	EE3 LLC

NAD 83 (TARGET BOTTOM HOLE)	NAD 83 (LANDING POINT)	NAD 83 (TOP OF NIOBRARA)	NAD 83 (SURFACE LOCATION)
LATITUDE = 40°35'54.46" (40.598461)	LATITUDE = 40°35'10.31" (40.586197)	LATITUDE = 40°35'04.58" (40.584606)	LATITUDE = 40°35'04.77" (40.584658)
LONGITUDE = 106°24'29.62" (106.408228)	LONGITUDE = 106°24'30.12" (106.408367)	LONGITUDE = 106°24'29.99" (106.408331)	LONGITUDE = 106°24'18.46" (106.405128)
NAD 27 (TARGET BOTTOM HOLE)	NAD 27 (LANDING POINT)	NAD 27 (TOP OF NIOBRARA)	NAD 27 (SURFACE LOCATION)
LATITUDE = 40°35'54.54" (40.598483)	LATITUDE = 40°35'10.39" (40.586219)	LATITUDE = 40°35'04.66" (40.584628)	LATITUDE = 40°35'04.85" (40.584681)
LONGITUDE = 106°24'27.51" (106.407642)	LONGITUDE = 106°24'28.01" (106.407781)	LONGITUDE = 106°24'27.88" (106.407744)	LONGITUDE = 106°24'16.35" (106.404542)
STATE PLANE NAD 83 (CO. NORTH)	STATE PLANE NAD 83 (CO. NORTH)	STATE PLANE NAD 83 (CO. NORTH)	STATE PLANE NAD 83 (CO. NORTH)
N: 1462152.81 E: 2747794.22	N: 1457685.50 E: 2747709.51	N: 1457105.66 E: 2747713.60	N: 1457115.61 E: 2748603.38
STATE PLANE NAD 27 (CO. NORTH)	STATE PLANE NAD 27 (CO. NORTH)	STATE PLANE NAD 27 (CO. NORTH)	STATE PLANE NAD 27 (CO. NORTH)
N: 462150.72 E: 1747950.44	N: 457683.39 E: 1747865.76	N: 457103.55 E: 1747869.87	N: 457113.50 E: 1748759.64