

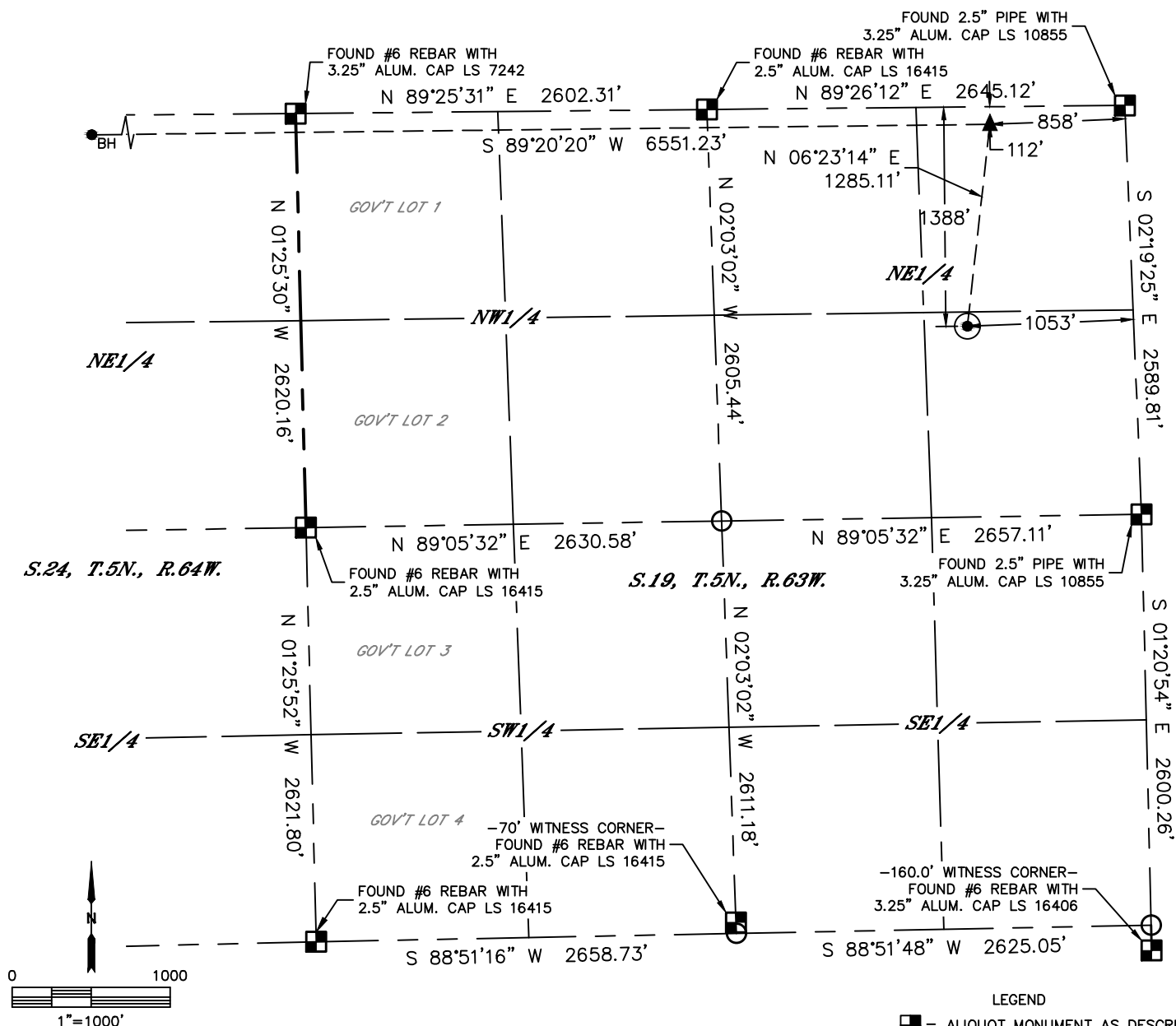


Lat40°, Inc. 6250 W. 10th Street, Unit 2, Greeley, CO 970-515-5294

# WELL LOCATION CERTIFICATE

COCKROFT 19U-404

SECTION: 19  
TOWNSHIP: 5N  
RANGE: 63W  
6TH. P.M.  
WELD COUNTY, CO



CLIENT: PDC ENERGY				LANDMAN: PATRICK FINLEY			
INSTRUMENT OPERATOR: CHASE MILLER				SURVEY DATE: 8/13/15		SURFACE USE: CROP LAND	
SHL FOOTAGE	SHL LAT °	SHL LONG °	SHL PDOP	SHL ELEV (FT.)	SHL 1/4/1/4	SHL S-T-R	
1388 FNL 1053 FEL	40.38814	-104.47376	2.0	4554	SENE	19-5-63	

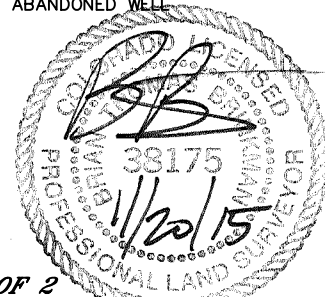
BHL FOOTAGE	BHL LAT °	BHL LONG °	BHL S-T-R	EP LAT °	EP LONG °	EP S-T-R
127 FNL 2160 FEL	40.39164	-104.49671	24-5-64	40.39164	-104.47320	19-5-63

## NOTE:

- 1) Bearings shown are Grid Bearings of the Colorado State Plane Coordinate System, North Zone, North American Datum 1983. The lineal dimensions as contained herein are based upon the "U.S. Survey Foot."
- 2) Distances to section lines measured at 90 degrees from said section lines.
- 3) Ground elevations are based on an observed GPS elevation (NAVD 1988 DATUM).
- 4) Latitude and Longitude shown are (NAD 83 DATUM).
- 5) IMPROVEMENTS: See LOCATION DRAWING for all visible improvements within 500' of oil and gas location.
- 6) This map does not represent a boundary survey.

NEAREST CULTURAL ITEMS	
BUILDING	±406' SE
BUILDING UNIT	±406' SE
HIGH OCCUPANCY BUILDING UNIT	5280'+
DESIGNATED OUTSIDE ACTIVITY AREA	5280'+
PUBLIC ROAD (COUNTY ROAD 388)	±438' SW
ABOVE GROUND UTILITY	±405' SE
RAILROAD	5280'+
PROPERTY LINE	±448' SW

- LEGEND
- = ALIQUOT MONUMENT AS DESCRIBED
  - = CALCULATED POSITION
  - = SURFACE HOLE LOCATION (SHL)
  - ▲ = ENTRY POINT LOCATION (EP)
  - BH = BOTTOM HOLE LOCATION (BHL)
  - ⊕ = EXISTING WELL
  - ⊙ = ABANDONED WELL



SHEET 1 OF 2

Brian T. Brinkman—On behalf of Lat40°, Inc.  
Colorado Licensed Professional Land Surveyor No. 38175  
DATE: rev11/20/2015  
PROJECT#: 2015114

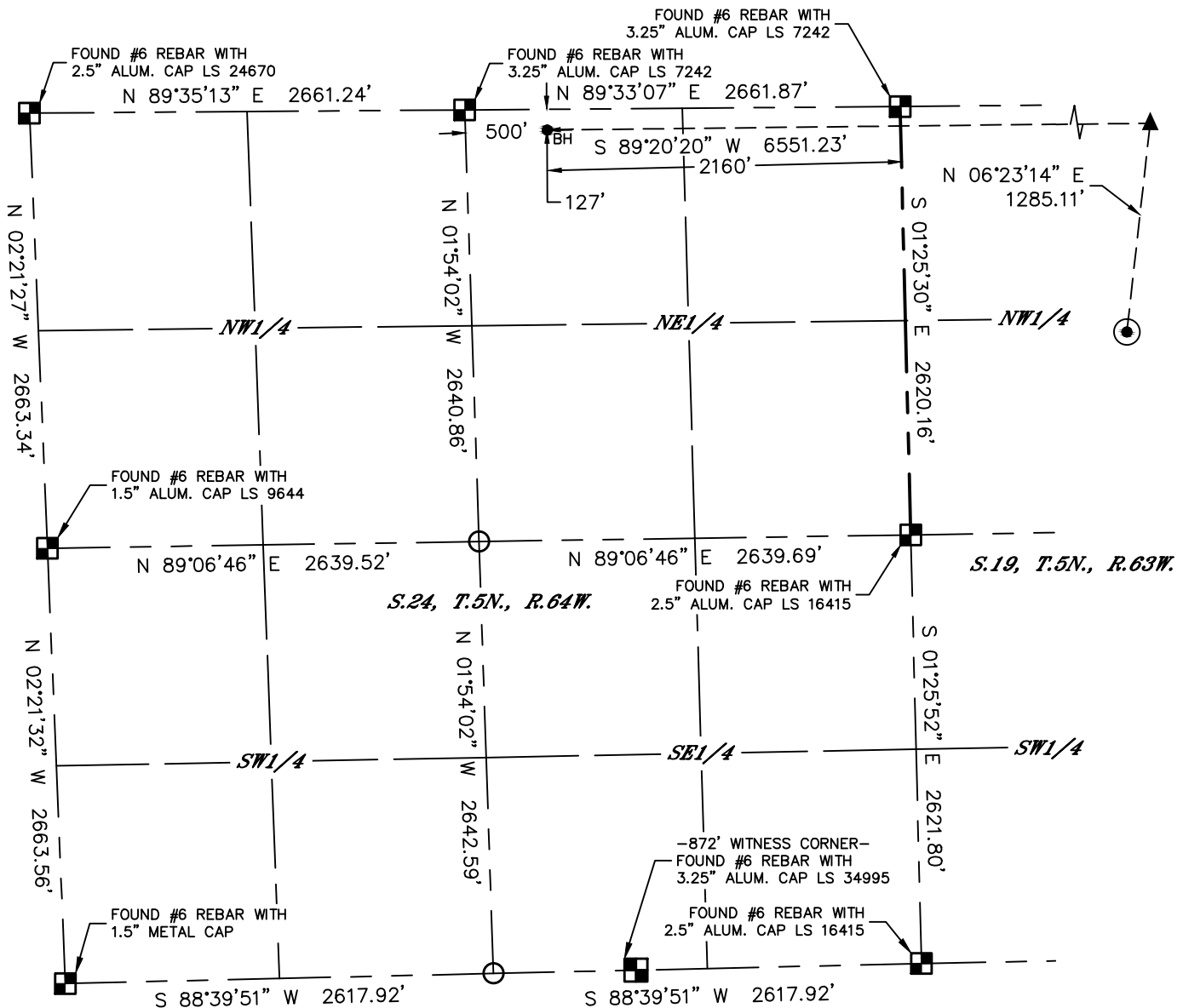


Lat40°, Inc. 6250 W. 10th Street, Unit 2, Greeley, CO 970-515-5294

# WELL LOCATION CERTIFICATE

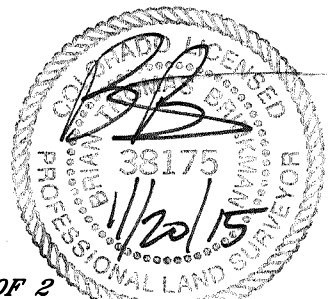
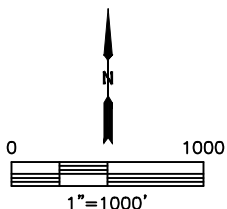
COCKROFT 19U-404

SECTION: 19  
TOWNSHIP: 5N  
RANGE: 63W  
6TH. P.M.  
WELD COUNTY, CO



## LEGEND

- = ALIQUOT MONUMENT AS DESCRIBED
- = CALCULATED POSITION
- ⊙ = SURFACE HOLE LOCATION (SHL)
- ▲ = ENTRY POINT LOCATION (EP)
- = BOTTOM HOLE LOCATION (BHL)
- ⊕ = EXISTING WELL
- ⊖ = ABANDONED WELL



**SHEET 2 OF 2**

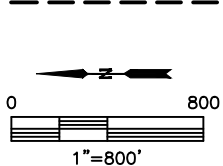
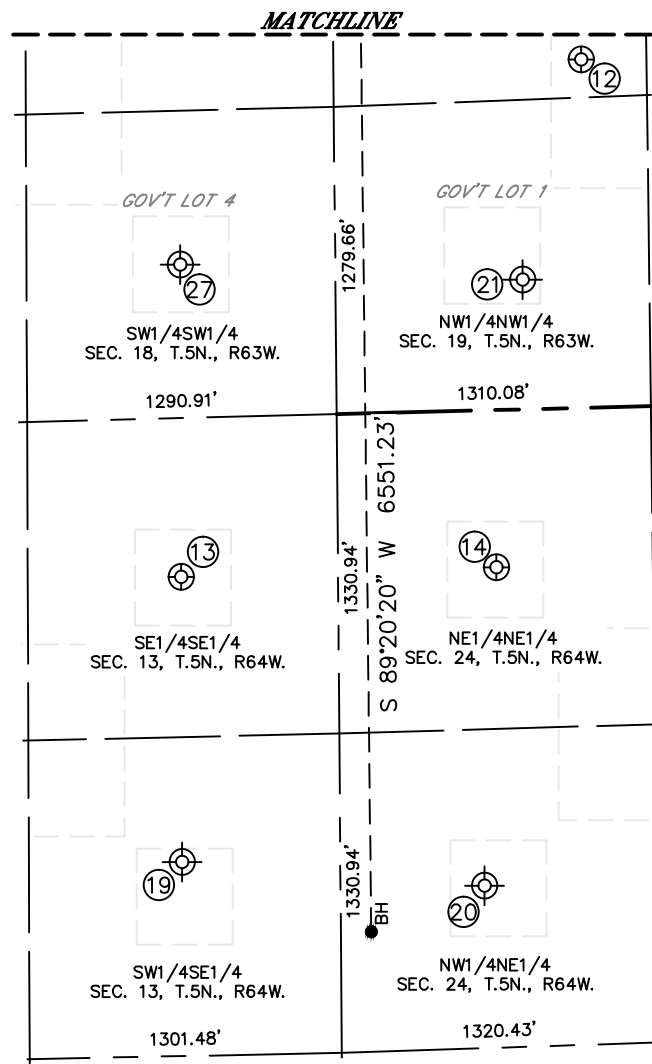
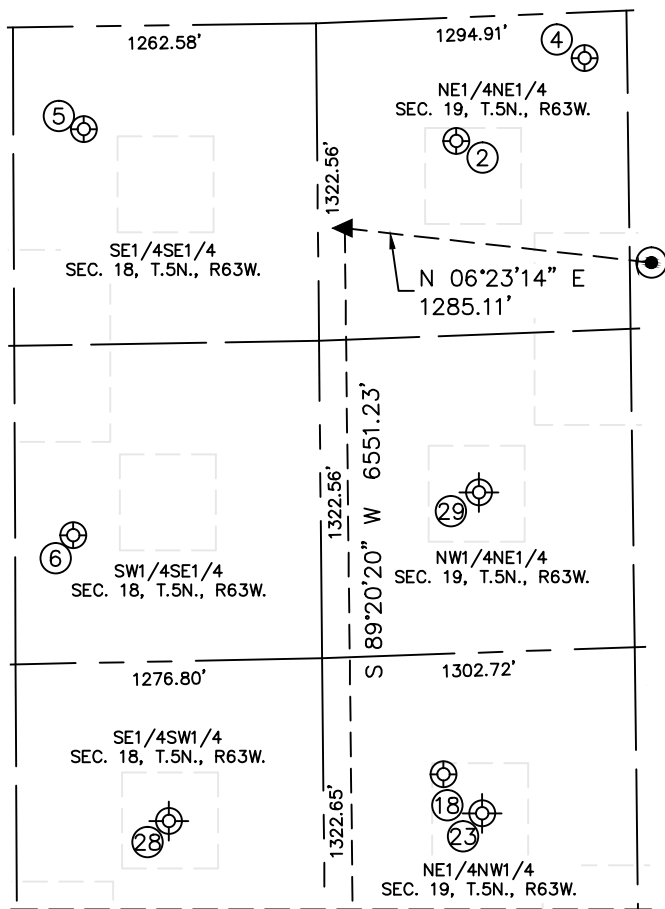
Brian T. Brinkman—On behalf of Lat40°, Inc.  
Colorado Licensed Professional Land Surveyor No. 38175  
DATE: rev11/20/2015  
PROJECT#: 2015114



Lat40°, Inc. 6250 W. 10th Street, Unit 2, Greeley, CO 970-515-5294

# SITE SKETCH COCKROFT 19U-404

SECTION: 19  
TOWNSHIP: 5N  
RANGE: 63W  
6TH. P.M.  
WELD COUNTY, CO



WELL NO.	WELL NAME	SHL FOOTAGE				SHL LAT°	SHL LONG°	PDOP	ELEV (FT.)	1/4/1/4
2	COCKROFT 41-19	580	FNL	514	FEL	40.39036	-104.47191	3.0	4555	NENE
4	COCKROFT 19V	1118	FNL	191	FEL	40.38888	-104.47070	1.8	4580	NENE
5	CHRISTENSON 16-18	972	FSL	428	FEL	40.39462	-104.47167	3.1	4602	SESE
6	CHRISTENSON 15-18	1033	FSL	2119	FEL	40.39479	-104.47774	3.1	4563	SWSE
12	OCHSNER 19A	1033	FNL	1451	FWL	40.38913	-104.48370	2.6	4559	NENW
13	NAKAGAWA B13-16	654	FSL	662	FEL	40.39377	-104.49137	1.9	4567	SESE
14	ROTHE 1-24	661	FNL	656	FEL	40.39016	-104.49128	2.0	4563	NENE
18	SLW 21-19	500	FNL	2106	FWL	40.39059	-104.48138	1.9	4558	NENW
19	NAKAGAWA-PMB 13-15	660	FSL	1850	FEL	40.39380	-104.49571	N/A	4563	SWSE
20	ROTHE 2-24	600	FNL	1980	FEL	40.39034	-104.49613	N/A	4559	NWNE
21	JOHNSON 1	780	FNL	540	FWL	40.38988	-104.48708	N/A	4559	NWNW
23	JOHNSON 3	660	FNL	1940	FWL	40.39036	-104.48225	N/A	4557	NENW
27	ODLE BB18-13	646	FSL	639	FWL	40.39355	-104.48670	N/A	4561	SWSW
28	ODLE BB18-14	646	FSL	1941	FWL	40.39374	-104.48200	N/A	4557	SESW
29	CHRISTENSON 2-19	660	FNL	1980	FEL	40.39087	-104.47736	N/A	4546	NWNE

NOTE: THE ABANDONED WELL DATA SHOWN IN RED ABOVE WAS OBTAINED FROM COGCC SCOUT CARDS.

DATE: rev11/20/2015  
PROJECT#: 2015114