

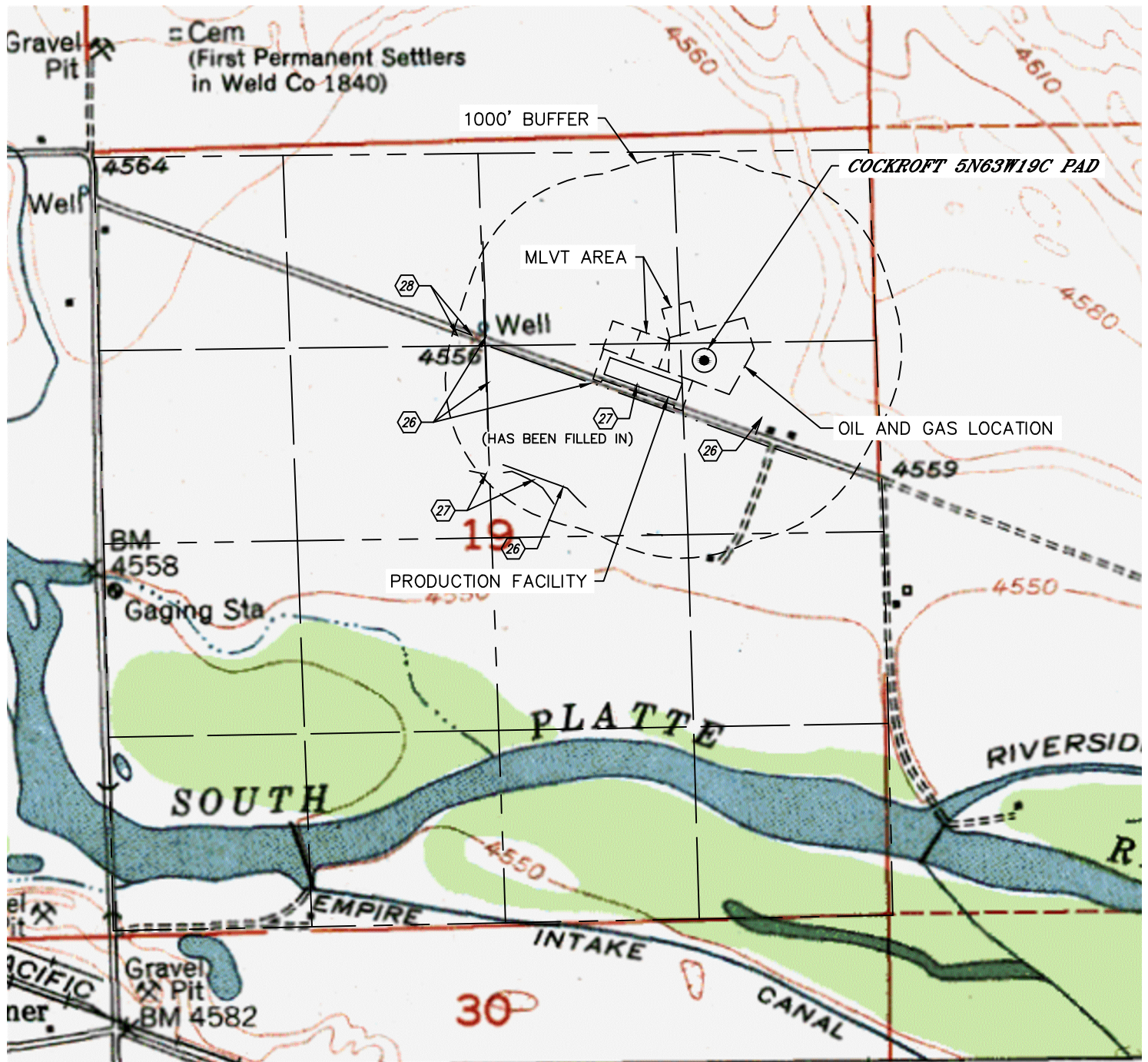


Lat40°, Inc. 6250 W. 10th Street, Unit 2, Greeley, CO 970-515-5294

HYDROLOGY MAP

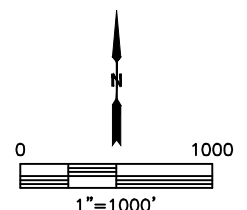
COCKROFT 5N63W19C PAD

SECTION: 19
TOWNSHIP: 5N
RANGE: 63W
6TH. P.M.
WELD COUNTY, CO



DISTANCES MEASURED FROM THE EDGE OF THE OIL AND GAS LOCATION.

- ②⑥ DITCH 270' SE, 718' W, 754' SW, 782' NW
- ②⑦ LOW AREA 53' NE (HAS BEEN FILLED IN), 804' & 974' SW
- ②⑧ BORROW DITCH 864' & 873' NW



NEAREST DOWN GRADIENT SURFACE WATER: DITCH 270' SE

DATE: 11/5/2015
PROJECT#: 2015114