



Lat40°, Inc. 6250 W. 10th Street, Unit 2, Greeley, CO 970-515-5294

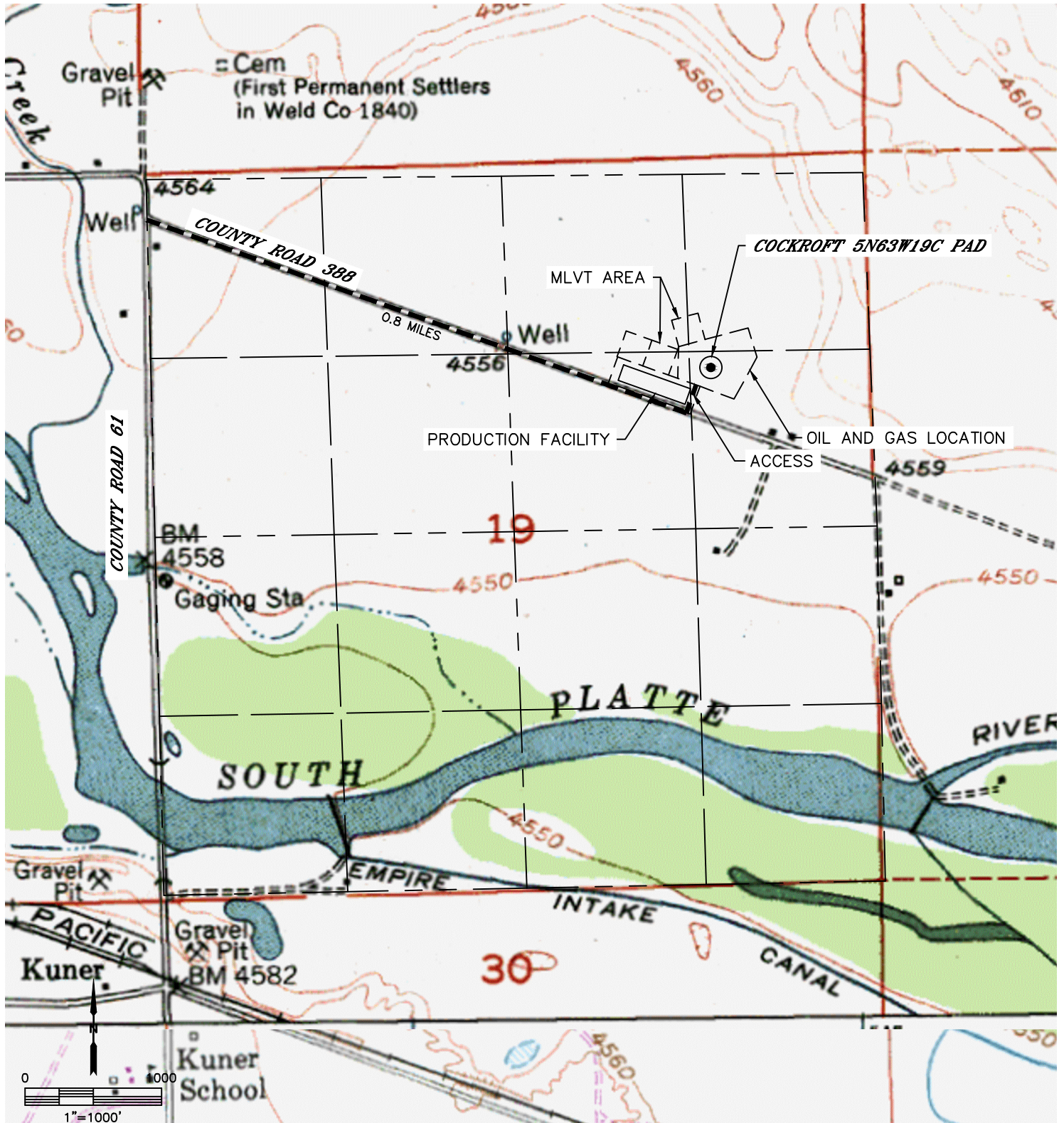
ACCESS ROAD MAP

COCKROFT 5N63W19C PAD

SECTION: 19
TOWNSHIP: 5N
RANGE: 63W
6TH. P.M.
WELD COUNTY, CO

DRIVING DIRECTIONS TO COCKROFT 5N63W19C PAD

FROM THE INTERSECTION OF COUNTY ROAD 61 AND COUNTY ROAD 388 GO 0.8 MILES SOUTHEAST ALONG COUNTY ROAD 388 TO A PROPOSED ACCESS TO THE NORTHEAST. GO NORTHEAST ON SAID ACCESS TO PROPOSED DRILL PAD.





Lat40°, Inc. 6250 W. 10th Street, Unit 2, Greeley, CO 970-515-5294

ACCESS ROAD MAP

COCKROFT 5N63W19C PAD

SECTION: 19
TOWNSHIP: 5N
RANGE: 63W
6TH. P.M.
WELD COUNTY, CO

