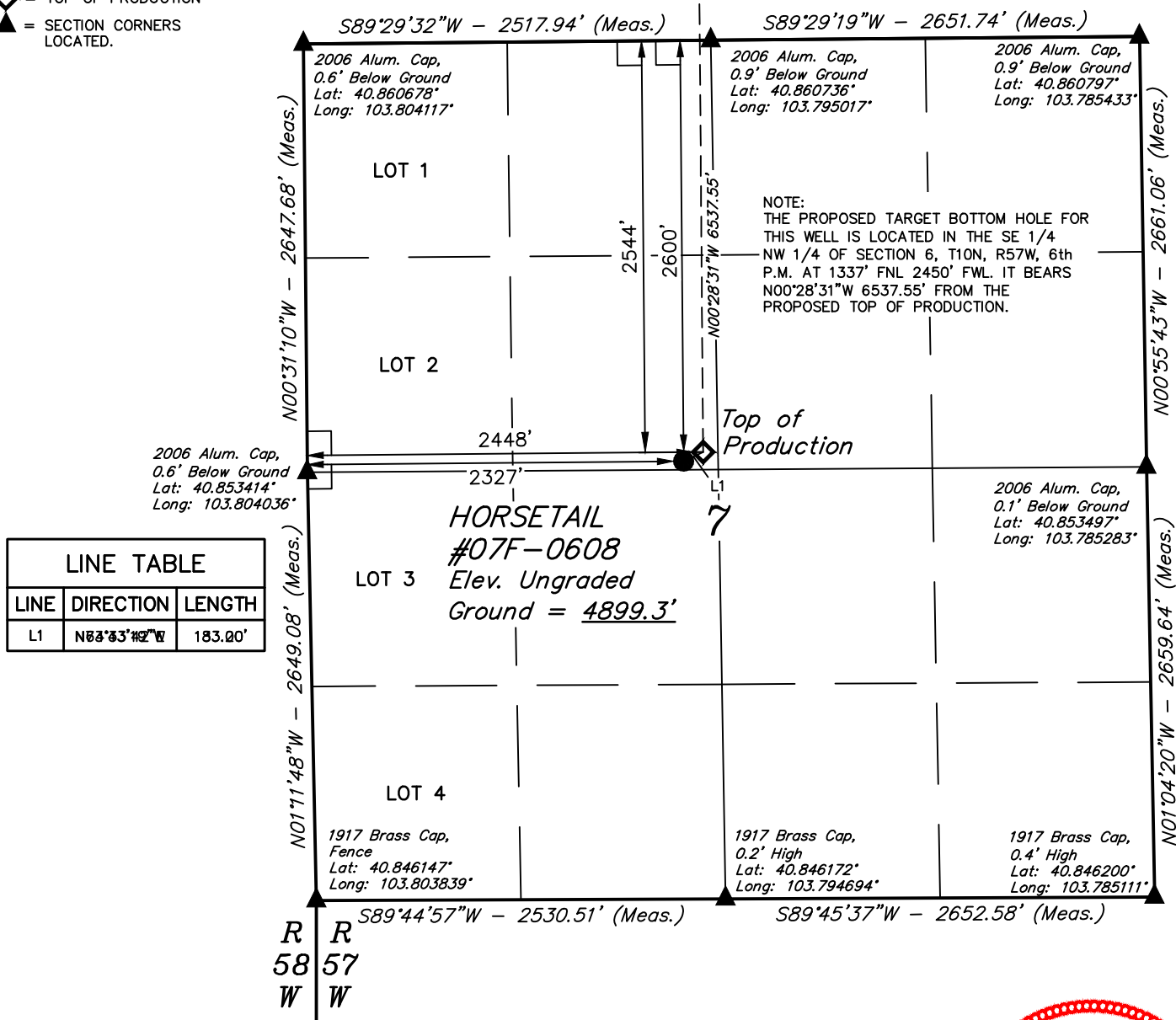


LEGEND:

- = 90° SYMBOL
- = PROPOSED WELLHEAD.
- = TARGET BOTTOM HOLE.
- = TOP OF PRODUCTION
- = SECTION CORNERS LOCATED.

T10N, R57W, 6th P.M.

Target
Bottom Hole



LINE TABLE		
LINE	DIRECTION	LENGTH
L1	N62°33'42\"W	183.20'

PDOP = 1.7



NAD 83 (TOP OF PRODUCTION)	NAD 83 (SURFACE LOCATION)
LATITUDE = 40°51'13.52\" (40.853756)	LATITUDE = 40°51'12.95\" (40.853597)
LONGITUDE = 103°47'42.69\" (103.795192)	LONGITUDE = 103°47'44.25\" (103.795625)
NAD 27 (TOP OF PRODUCTION)	NAD 27 (SURFACE LOCATION)
LATITUDE = 40°51'13.57\" (40.853769)	LATITUDE = 40°51'13.01\" (40.853614)
LONGITUDE = 103°47'40.89\" (103.794692)	LONGITUDE = 103°47'42.45\" (103.795125)

BASIS OF BEARINGS

BASIS OF BEARINGS IS A G.P.S. OBSERVATION

BASIS OF ELEVATION

SPOT ELEVATION LOCATED AT THE NORTHEAST CORNER OF SECTION 15, T9N, R58W, 6th P.M. TAKEN FROM THE GATEHOOK SPRING, QUADRANGLE, COLORADO, WELD COUNTY, 7.5 MINUTE QUAD (TOPOGRAPHIC MAP) PUBLISHED BY THE UNITED STATES DEPARTMENT OF THE INTERIOR, GEOLOGICAL SURVEY. SAID ELEVATION IS MARKED AS BEING 4679 FEET.



CERTIFICATE

THIS IS TO CERTIFY THAT THE ABOVE PLAT WAS PREPARED FROM FIELD NOTES OF ACTUAL SURVEYS MADE BY ME OR UNDER MY SUPERVISION, AND THAT THE SAME ARE TRUE AND CORRECT TO THE BEST OF MY KNOWLEDGE AND BELIEF.

REGISTERED LAND SURVEYOR
REGISTRATION NO. 28285
STATE OF COLORADO

WHITING OIL & GAS CORP.

HORSETAIL #07F-0608 (SURFACE LOCATION)
SE 1/4 NW 1/4, SECTION 7, T10N, R57W, 6th P.M.
WELD COUNTY, COLORADO

SURVEYED BY: GREG WEIMER, C.J.	DATE: 12-09-14
DRAWN BY: K.B.	DATE DRAWN: 08-07-14
SCALE: 1" = 1000'	REVISED: 12-23-15

WELL LOCATION PLAT

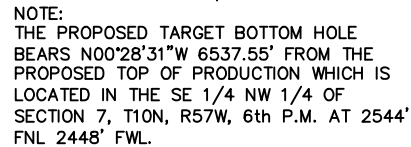


UELS, LLC
Corporate Office * 85 South 200 East
Vernal, UT 84078 * (435) 789-1017

T10N, R57W, 6th P.M.

- 1917 Brass Cap,
0.3' High
Lat: 40.875367°
Long: 103.795042°

- 1917 Brass Cap,
0.4' High
Lat: 40.875436°
Long: 103.785333°




2006 Alum. Cap,
0.9' Below Ground
Lat: 40.860736°
Long: 103.795017°

2006 Alum. Cap,
0.9' Below Ground
Lat: 40.860797°
Long: 103.785433°

CERTIFICATE

THIS IS TO CERTIFY THAT THE ABOVE MAP WAS PREPARED FROM FIELD NOTES OF ACTUAL SURVEYS MADE BY ME OR UNDER MY SUPERVISION, AND THAT THE SAME ARE TRUE AND CORRECT TO THE BEST OF MY KNOWLEDGE AND BELIEF.



NAD 83 (TARGET BOTTOM HOLE)
 LATITUDE = 40°52'18.10" (40.871694)
 LONGITUDE = 103°47'43.35" (103.795375)
NAD 27 (TARGET BOTTOM HOLE)
 LATITUDE = 40°52'18.15" (40.871708)
 LONGITUDE = 103°47'41.55" (103.794875)



REGISTERED LAND SURVEYOR
REGISTRATION NO. 28285
STATE OF COLORADO 12-23-15

BASIS OF BEARINGS

BASIS OF BEARINGS IS A G.P.S. OBSERVATION

SPOT ELEVATION LOCATED AT THE NORTHEAST CORNER OF SECTION 15, T9N, R58W, 6th P.M. TAKEN FROM THE GATEHOOK SPRING, QUADRANGLE, COLORADO, WELD COUNTY, 7.5 MINUTE QUAD (TOPOGRAPHIC MAP) PUBLISHED BY THE UNITED STATES DEPARTMENT OF THE INTERIOR, GEOLOGICAL SURVEY. SAID ELEVATION IS MARKED AS BEING 4679 FEET.



UELS, LLC

**Corporate Office * 85 South 200 East
Vernal, UT 84078 * (435) 789-1017**

WHITING OIL & GAS CORP.

HORSETAIL #07F-0608 (TARGET BOTTOM HOLE)
SE 1/4 NW 1/4, SECTION 6, T10N, R57W, 6th P.M.
WELD COUNTY, COLORADO

SURVEYED BY: GREG WEIMER, C.J.	DATE: 12-09-14
DRAWN BY: K.B.	DATE DRAWN: 08-07-14
SCALE: 1" = 1000'	REVISED: 12-23-15

WELL LOCATION PLAT

