

Interim Reclamation Inspection

Inspection Date: 12/22/2015

Operator: Noble Energy Inc.

Location ID: 421847

API #: 05-123-33080

Weld County, CO

Section 22 T9S R59W

Aaron Trujillo
Reclamation Specialist
COGCC

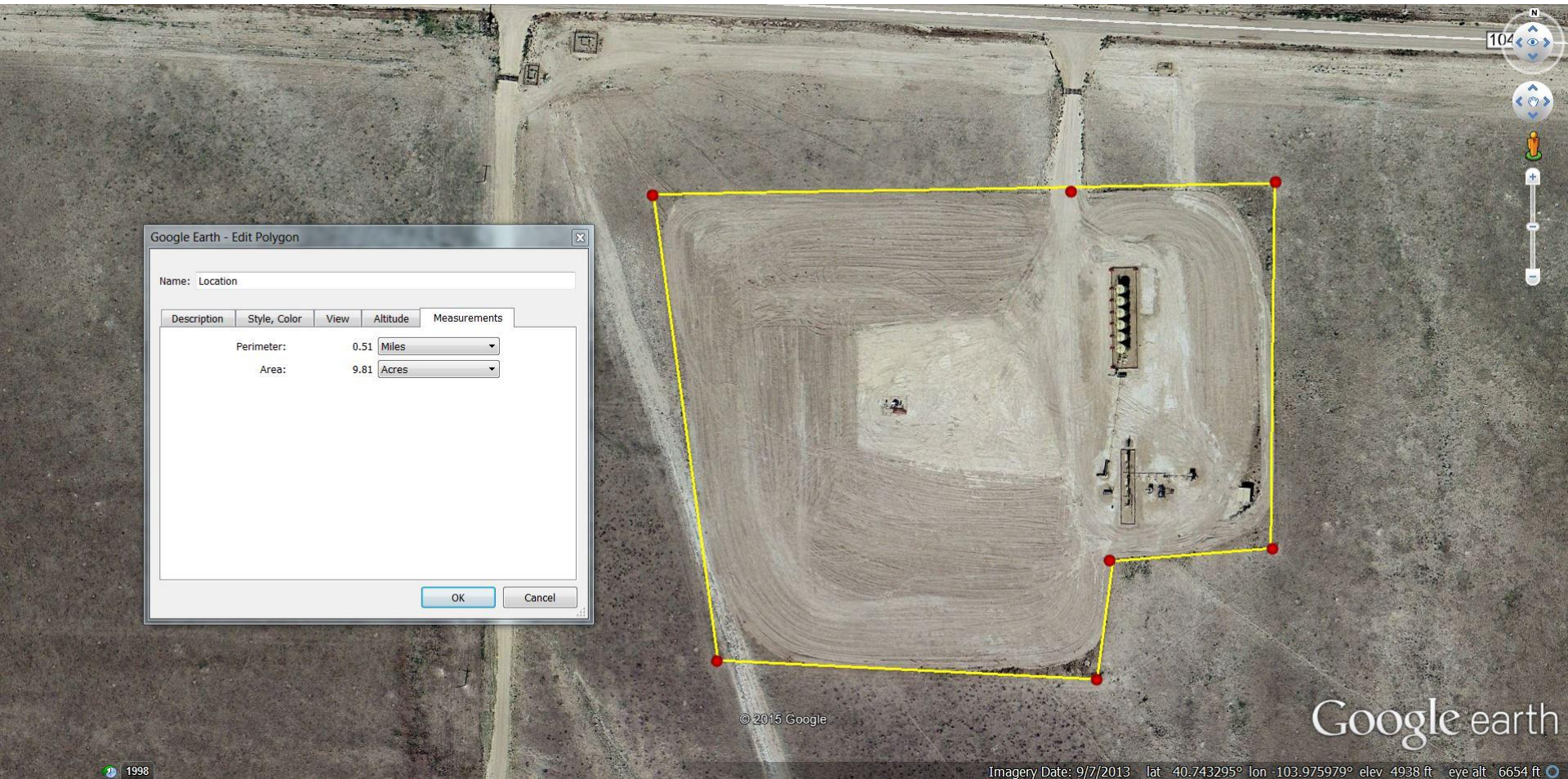


Figure 1: Aerial image of location. Area of location pre-interim reclamation was approximately 9.8 acres.

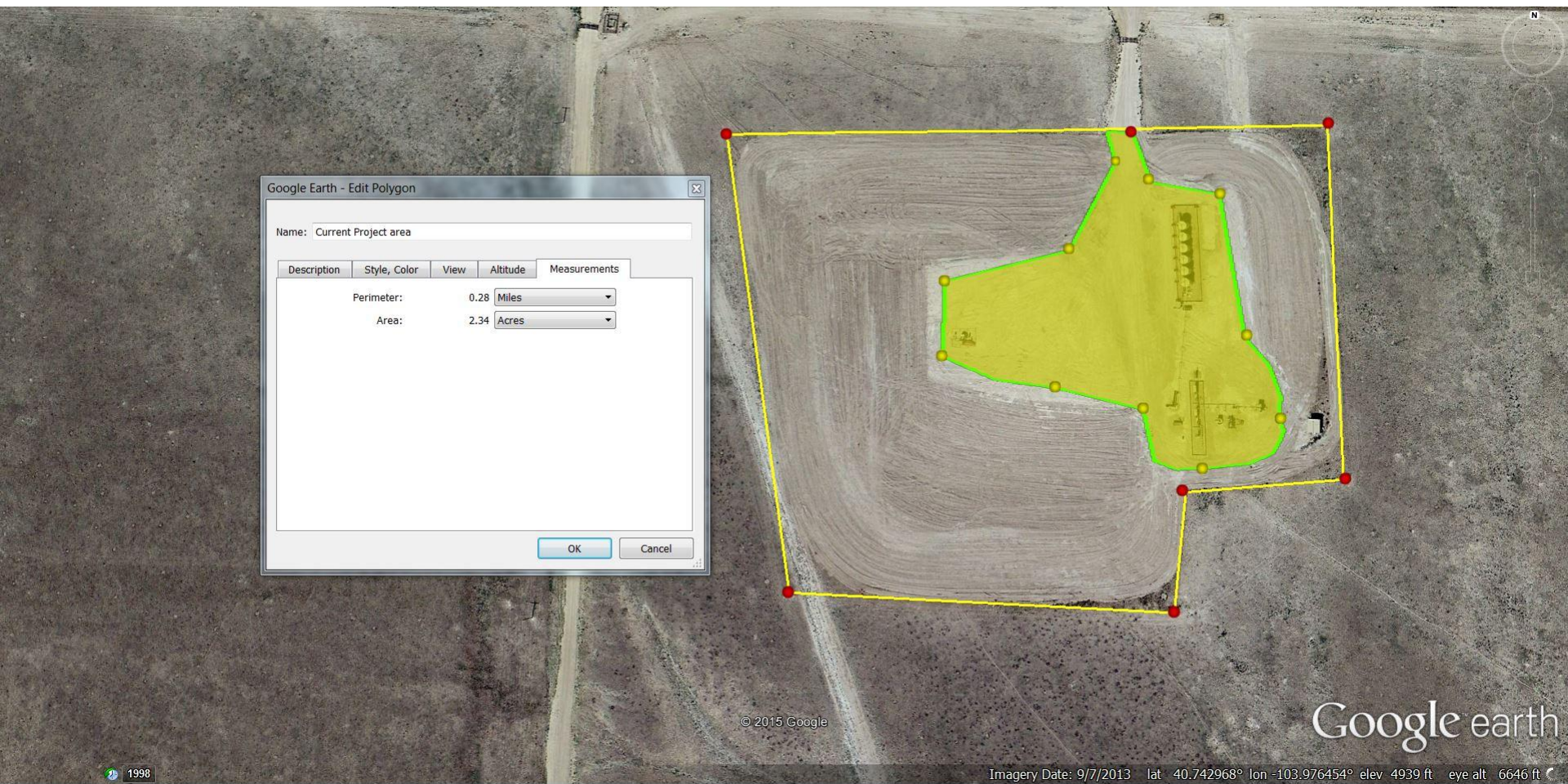


Figure 2: Aerial image of location. Current size of project area is approximately 2.3 acres.

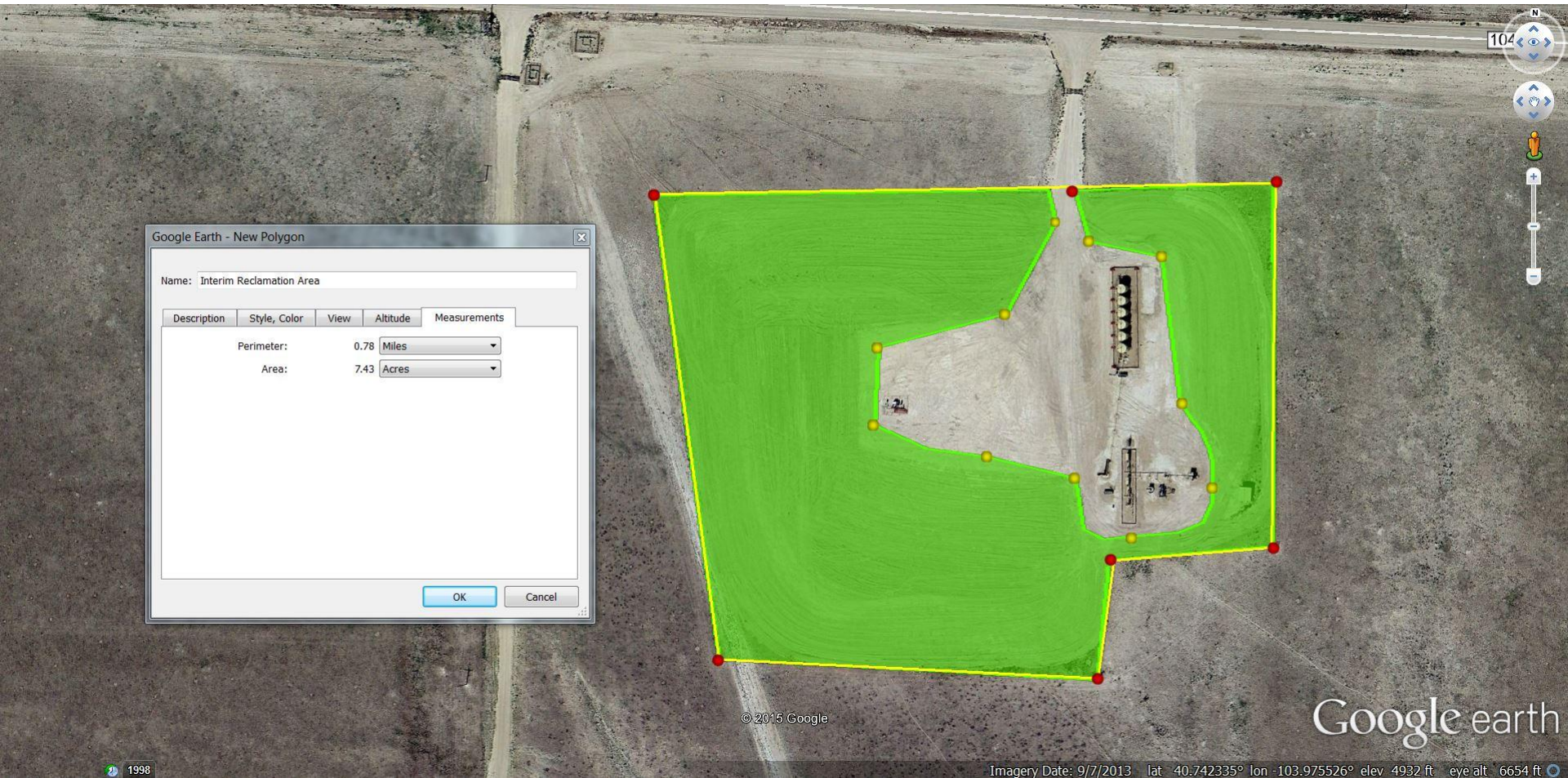


Figure 3: Aerial image of location. Image shows current size of interim reclamation in process is approximately 7.4 acres.



Figure 4: Photo taken from northern end of location. Photo of sign at location entrance.



Figure 5: Photo taken from the northern end of location, facing southeast. Photo shows location and interim area.



Figure 6: Photo taken from the northern end of location, facing south. Photo shows location and interim area.



Figure 7: Photo taken from the northern end of location, facing southwest. Photo shows location and interim area.



Figure 8: Photo taken from northeast corner of location, facing west. Photo shows interim reclamation in process.



Figure 9: Photo taken from northeast corner of location, facing south. Photo shows interim reclamation in process.



Figure 10: Photo taken from southeast corner of location, north west. Photo shows interim reclamation in process.



Figure 11: Photo taken from southeast corner of location, facing west. Photo shows interim reclamation in process.



Figure 12: Photo taken from southern end of location, facing north. Photo shows interim reclamation in process.



Figure 13: Photo taken from southern end of location, facing west. Photo shows interim reclamation in process.



Figure 14: Photo taken from southern end of location. Photo shows current vegetation is predominantly undesirable, weedy plant species. This is common throughout location.



12.22.2015 11:46

Figure 15: Photo taken from southwest corner of location, facing east. Photo shows interim reclamation in process.



Figure 16: Photo taken from southwest corner of location, facing north. Photo shows interim reclamation in process.



Figure 17: Photo taken from west end of location. Photo shows current vegetation is predominantly undesirable, weedy plant species. Photo continues on figure 18.



Figure 18: Continuation from figure 17. Photo shows some evidence of germination of perennial grass beneath weed debris.



Figure 19: Photo taken from north end of location. Photo shows example of some areas of the interim reclamation with no evidence of perennial growth or germination.