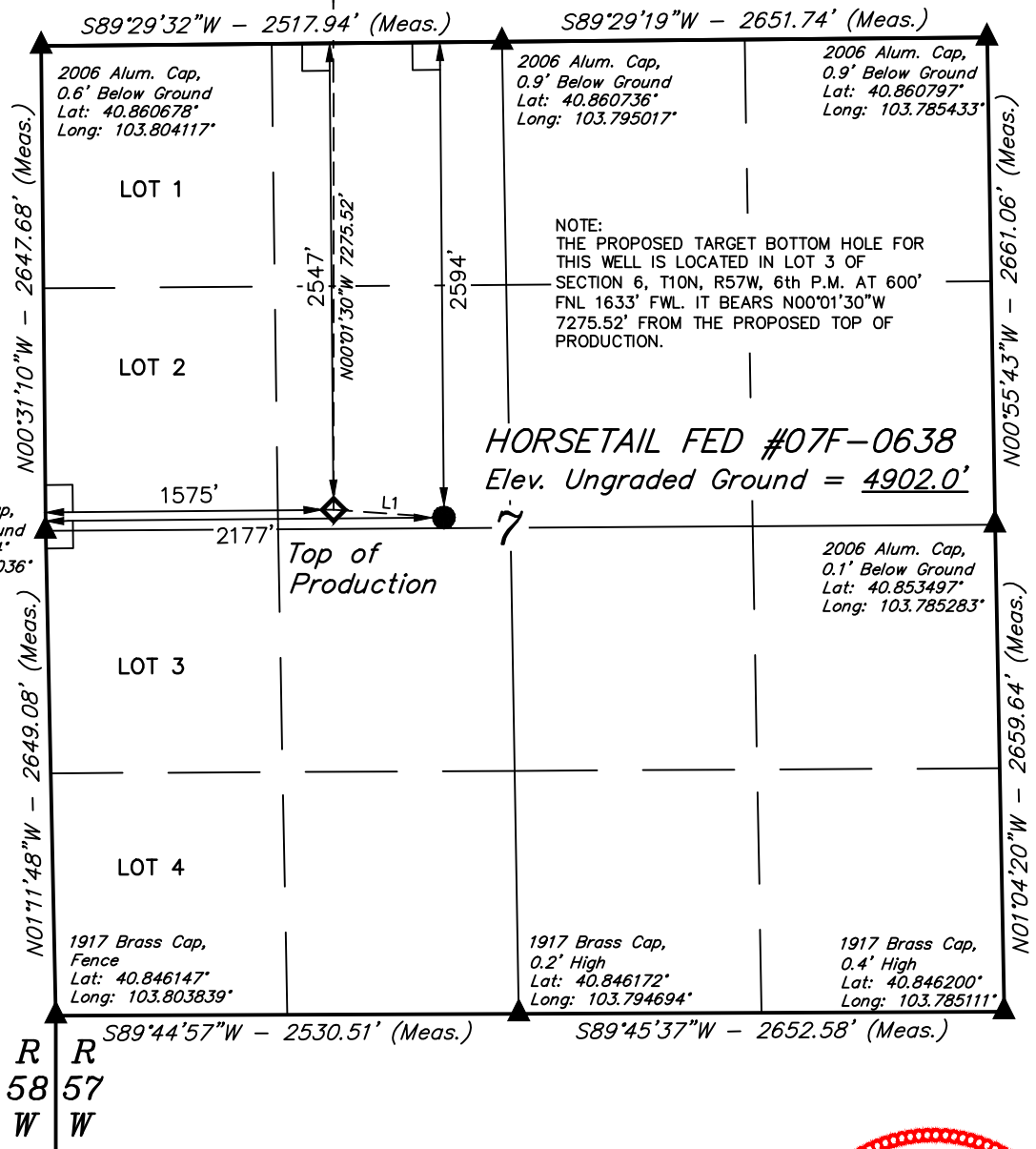


T10N, R57W, 6th P.M.

LEGEND:

- └─┘ = 90° SYMBOL
- = PROPOSED WELLHEAD.
- = TARGET BOTTOM HOLE.
- ◇ = TOP OF PRODUCTION
- ▲ = SECTION CORNERS LOCATED.

Target
Bottom Hole



LINE TABLE		
LINE	DIRECTION	LENGTH
L1	N86°00'26"W	604.28'

PDOP = 2.5



NAD 83 (TOP OF PRODUCTION)		NAD 83 (SURFACE LOCATION)	
LATITUDE = 40°51'13.42"	(40.853728)	LATITUDE = 40°51'13.00"	(40.853611)
LONGITUDE = 103°47'54.05"	(103.798347)	LONGITUDE = 103°47'46.21"	(103.796169)
NAD 27 (TOP OF PRODUCTION)		NAD 27 (SURFACE LOCATION)	
LATITUDE = 40°51'13.47"	(40.853742)	LATITUDE = 40°51'13.05"	(40.853625)
LONGITUDE = 103°47'52.24"	(103.797844)	LONGITUDE = 103°47'44.40"	(103.795667)

CERTIFICATE
THIS IS TO CERTIFY THAT THE ABOVE PLAT WAS PREPARED FROM FIELD NOTES OF ACTUAL SURVEYS MADE BY ME OR UNDER MY SUPERVISION AND THAT THE SAME ARE TRUE AND CORRECT TO THE BEST OF MY KNOWLEDGE AND BELIEF.

Greg Weimer
28285
REGISTERED LAND SURVEYOR
REGISTRATION NO. 28285
STATE OF COLORADO
2015

BASIS OF BEARINGS
BASIS OF BEARINGS IS A G.P.S. OBSERVATION

BASIS OF ELEVATION

SPOT ELEVATION LOCATED AT THE NORTHEAST CORNER OF SECTION 15, T9N, R58W, 6th P.M. TAKEN FROM THE GATEHOOK SPRING, QUADRANGLE, COLORADO, WELD COUNTY, 7.5 MINUTE QUAD (TOPOGRAPHIC MAP) PUBLISHED BY THE UNITED STATES DEPARTMENT OF THE INTERIOR, GEOLOGICAL SURVEY. SAID ELEVATION IS MARKED AS BEING 4679 FEET.



WHITING OIL & GAS CORP.

HORSETAIL FED #07F-0638 (SURFACE LOCATION)
SE 1/4 NW 1/4, SECTION 7, T10N, R57W, 6th P.M.
WELD COUNTY, COLORADO

SURVEYED BY: GREG WEIMER, C.J.	DATE: 12-09-14
DRAWN BY: K.B.	DATE DRAWN: 11-07-14
SCALE: 1" = 1000'	REVISED: 12-15-15 C.C.

WELL LOCATION PLAT

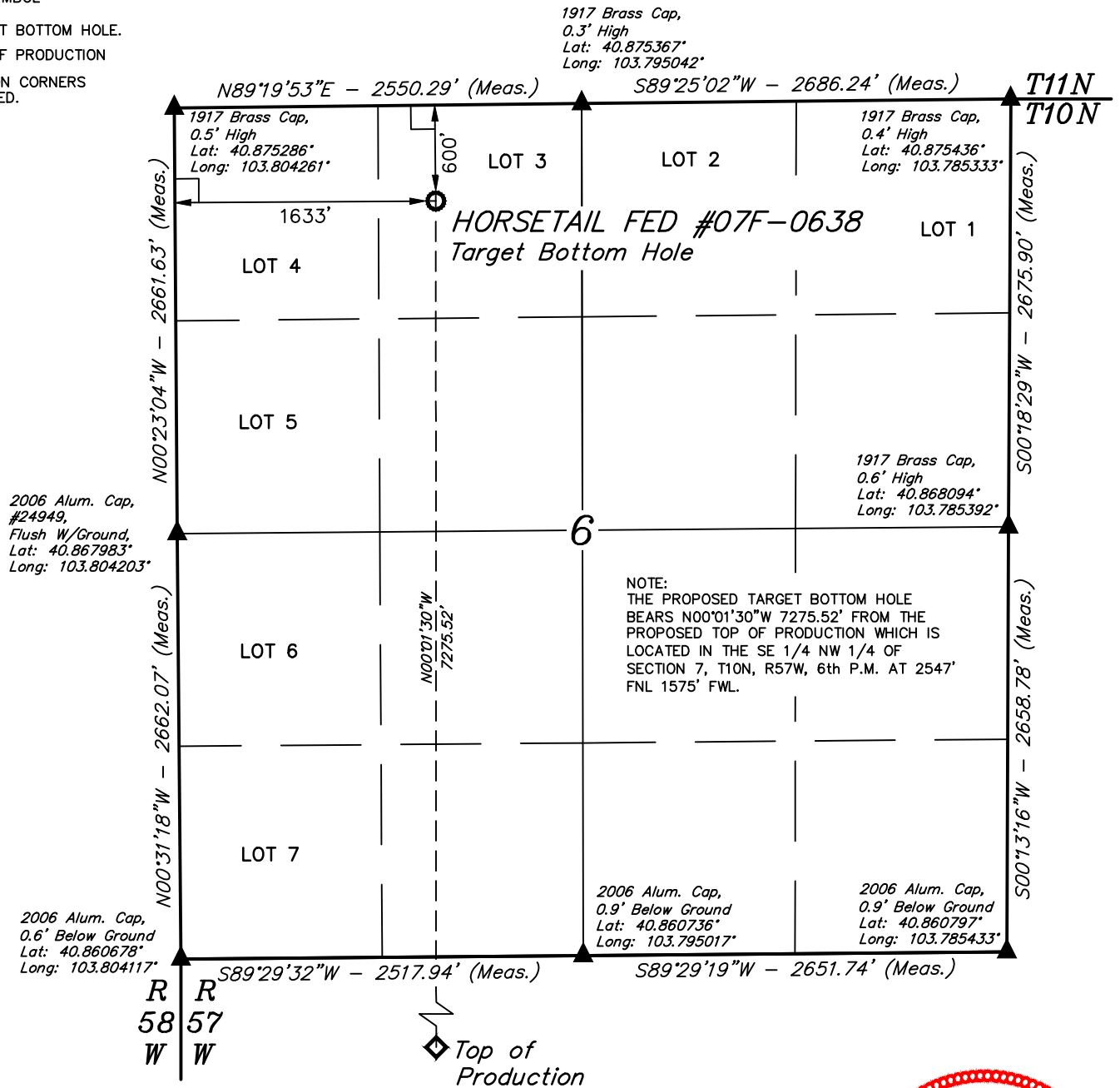


UELS, LLC
Corporate Office * 85 South 200 East
Vernal, UT 84078 * (435) 789-1017

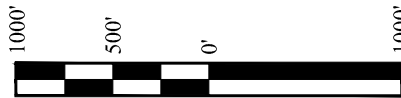
LEGEND:

- └─ = 90° SYMBOL
- = TARGET BOTTOM HOLE.
- ◇ = TOP OF PRODUCTION
- ▲ = SECTION CORNERS LOCATED.

T10N, R57W, 6th P.M.



NAD 83 (TARGET BOTTOM HOLE)
LATITUDE = 40°52'25.29" (40.873692)
LONGITUDE = 103°47'54.04" (103.798344)
NAD 27 (TARGET BOTTOM HOLE)
LATITUDE = 40°52'25.34" (40.873706)
LONGITUDE = 103°47'52.24" (103.797844)



CERTIFICATE

THIS IS TO CERTIFY THAT THE ABOVE PLAT WAS PREPARED FROM FIELD NOTES OF ACTUAL SURVEYS MADE BY ME OR UNDER MY SUPERVISION AND THAT THE SAME ARE TRUE AND CORRECT TO THE BEST OF MY KNOWLEDGE AND BELIEF.



BASIS OF BEARINGS
BASIS OF BEARINGS IS A G.P.S. OBSERVATION

BASIS OF ELEVATION

SPOT ELEVATION LOCATED AT THE NORTHEAST CORNER OF SECTION 15, T9N, R58W, 6th P.M. TAKEN FROM THE GATEHOOK SPRING, QUADRANGLE, COLORADO, WELD COUNTY, 7.5 MINUTE QUAD (TOPOGRAPHIC MAP) PUBLISHED BY THE UNITED STATES DEPARTMENT OF THE INTERIOR, GEOLOGICAL SURVEY. SAID ELEVATION IS MARKED AS BEING 4679 FEET.

WHITING OIL & GAS CORP.

HORSETAIL FED #07F-0638 (TARGET BOTTOM HOLE)
LOT 3, SECTION 6, T10N, R57W, 6th P.M.
WELD COUNTY, COLORADO



UELS, LLC
Corporate Office * 85 South 200 East
Vernal, UT 84078 * (435) 789-1017



SURVEYED BY: GREG WEIMER, C.J.	DATE: 12-09-14
DRAWN BY: K.B.	DATE DRAWN: 11-07-14
SCALE: 1" = 1000'	REVISED: 12-15-15 C.C.

WELL LOCATION PLAT