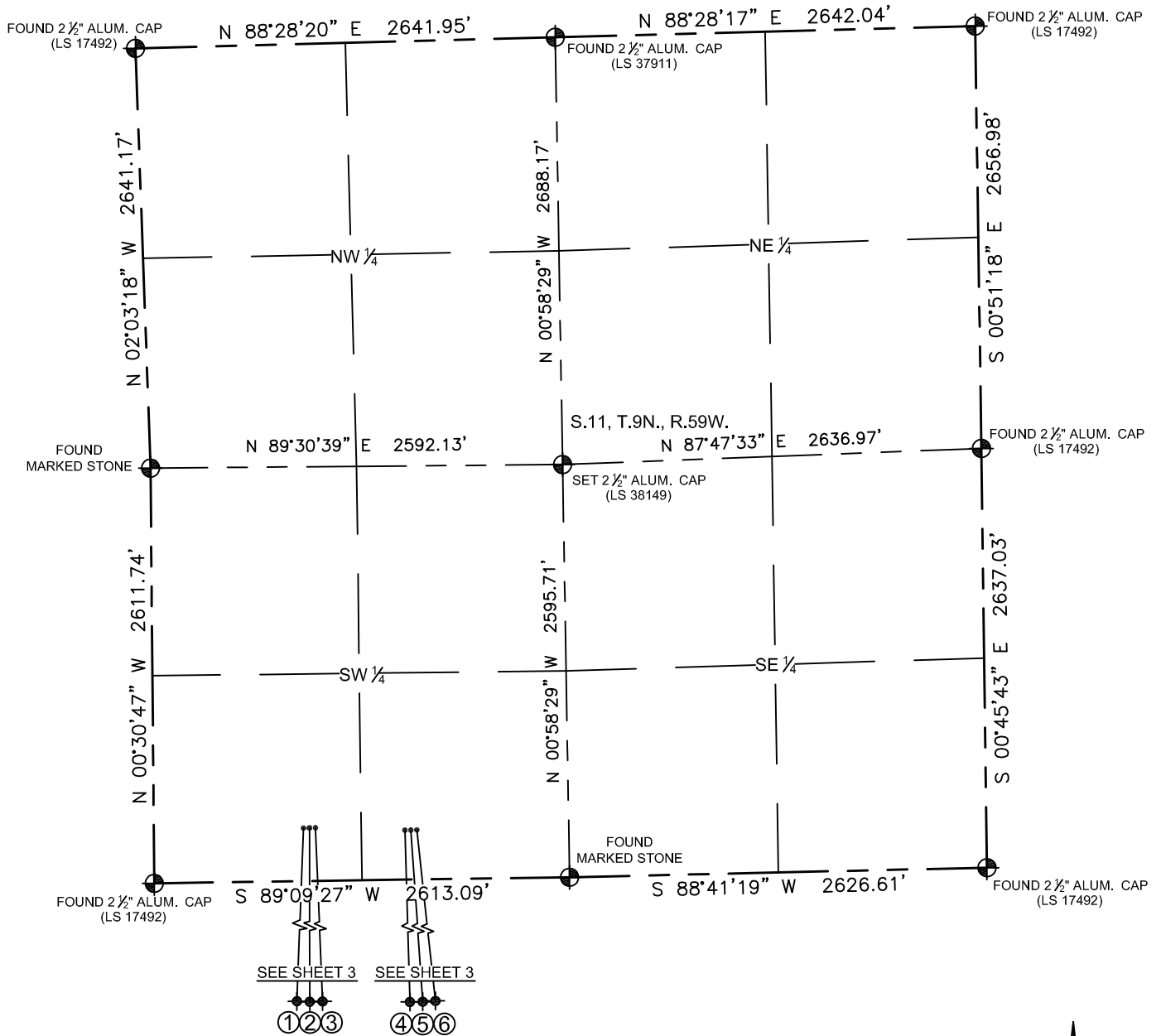


**MULTI-WELL PLAN**

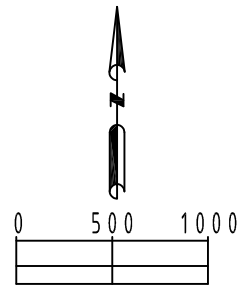
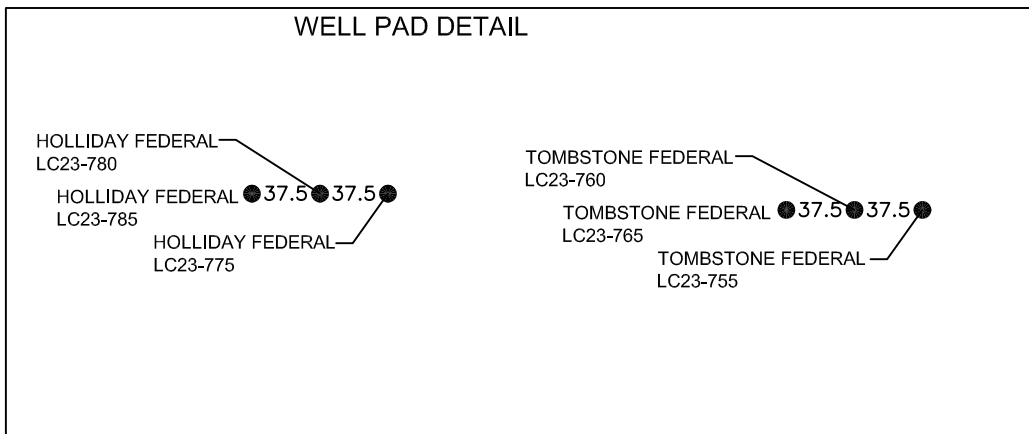
LC11-13 PAD

THIS MAP DOES NOT REPRESENT A BOUNDARY SURVEY

SECTION: 11  
TOWNSHIP: 9N  
RANGE: 59W



SEE SHEET 3  
①②③      ④⑤⑥



**LEGEND**

- ⊕ = FOUND MONUMENT
- = PROPOSED WELL
- ⊙ = BOTTOM HOLE
- ◆ = EXISTING WELL

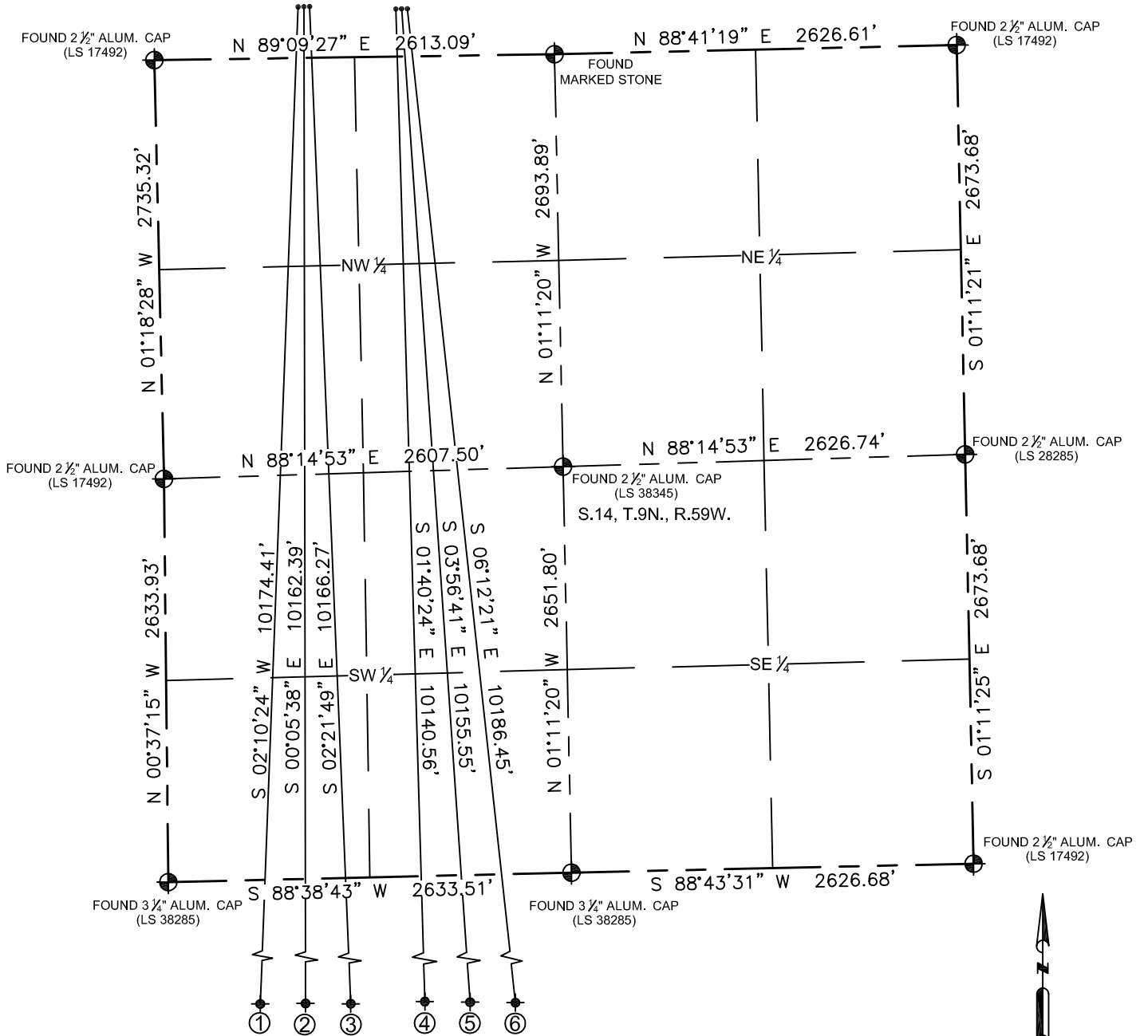
SHEET 1 OF 4  
FIELD DATE: 04-23-14  
DRAWING DATE: 07-31-15  
DRAWN BY: JWJ  
CHECKED BY: KAD

MULTI-WELL PLAN

LC11-13 PAD

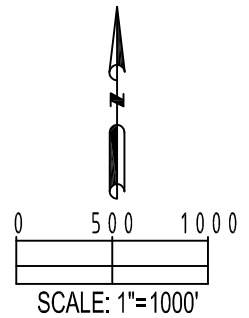
THIS MAP DOES NOT REPRESENT A BOUNDARY SURVEY

SECTION: 11  
TOWNSHIP: 9N  
RANGE: 59W



SHEET 2 OF 4

FIELD DATE: 04-23-14
DRAWING DATE: 07-31-15
DRAWN BY: JWJ
CHECKED BY: KAD



**LEGEND**

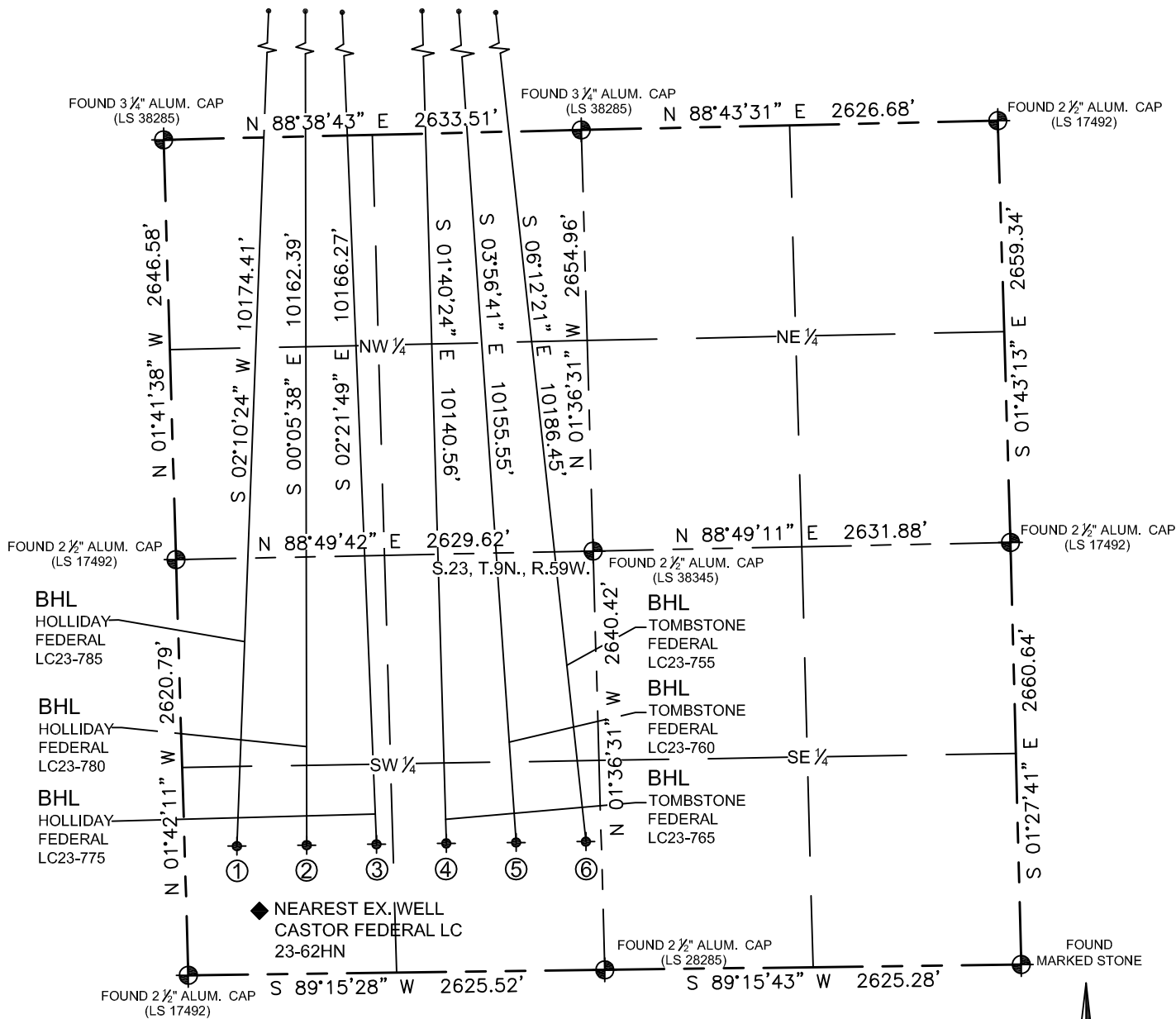
- = FOUND MONUMENT
- = PROPOSED WELL
- ⊕ = BOTTOM HOLE
- ◆ = EXISTING WELL

MULTI-WELL PLAN

LC11-13 PAD

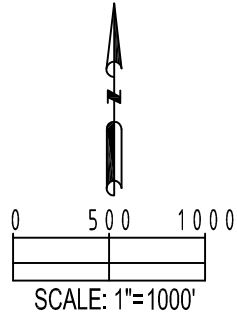
THIS MAP DOES NOT REPRESENT A BOUNDARY SURVEY

SECTION: 11  
TOWNSHIP: 9N  
RANGE: 59W



◆ NEAREST EX. WELL  
CASTOR FEDERAL LC  
23-62HN

- |  |  |  |
|--|--|--|
| ①  | ②  | ③  |
| BOTTOM HOLE:<br>HOLLIDAY FEDERAL<br>LC23-785<br>810' FSL<br>330' FWL<br>LAT: 40.73127°N<br>LONG: 103.95342°W   | BOTTOM HOLE:<br>HOLLIDAY FEDERAL<br>LC23-780<br>810' FSL<br>770' FWL<br>LAT: 40.73126°N<br>LONG: 103.95183°W   | BOTTOM HOLE:<br>HOLLIDAY FEDERAL<br>LC23-775<br>810' FSL<br>1210' FWL<br>LAT: 40.73125°N<br>LONG: 103.95024°W  |
| ④  | ⑤  | ⑥  |
| BOTTOM HOLE:<br>TOMBSTONE FEDERAL<br>LC23-765<br>810' FSL<br>1650' FWL<br>LAT: 40.73125°N<br>LONG: 103.94866°W | BOTTOM HOLE:<br>TOMBSTONE FEDERAL<br>LC23-760<br>810' FSL<br>2090' FWL<br>LAT: 40.73124°N<br>LONG: 103.94707°W | BOTTOM HOLE:<br>TOMBSTONE FEDERAL<br>LC23-755<br>810' FSL<br>2530' FWL<br>LAT: 40.73124°N<br>LONG: 103.94548°W |



- LEGEND**
- = FOUND MONUMENT
  - = PROPOSED WELL
  - ◆ = BOTTOM HOLE
  - ◆ = EXISTING WELL

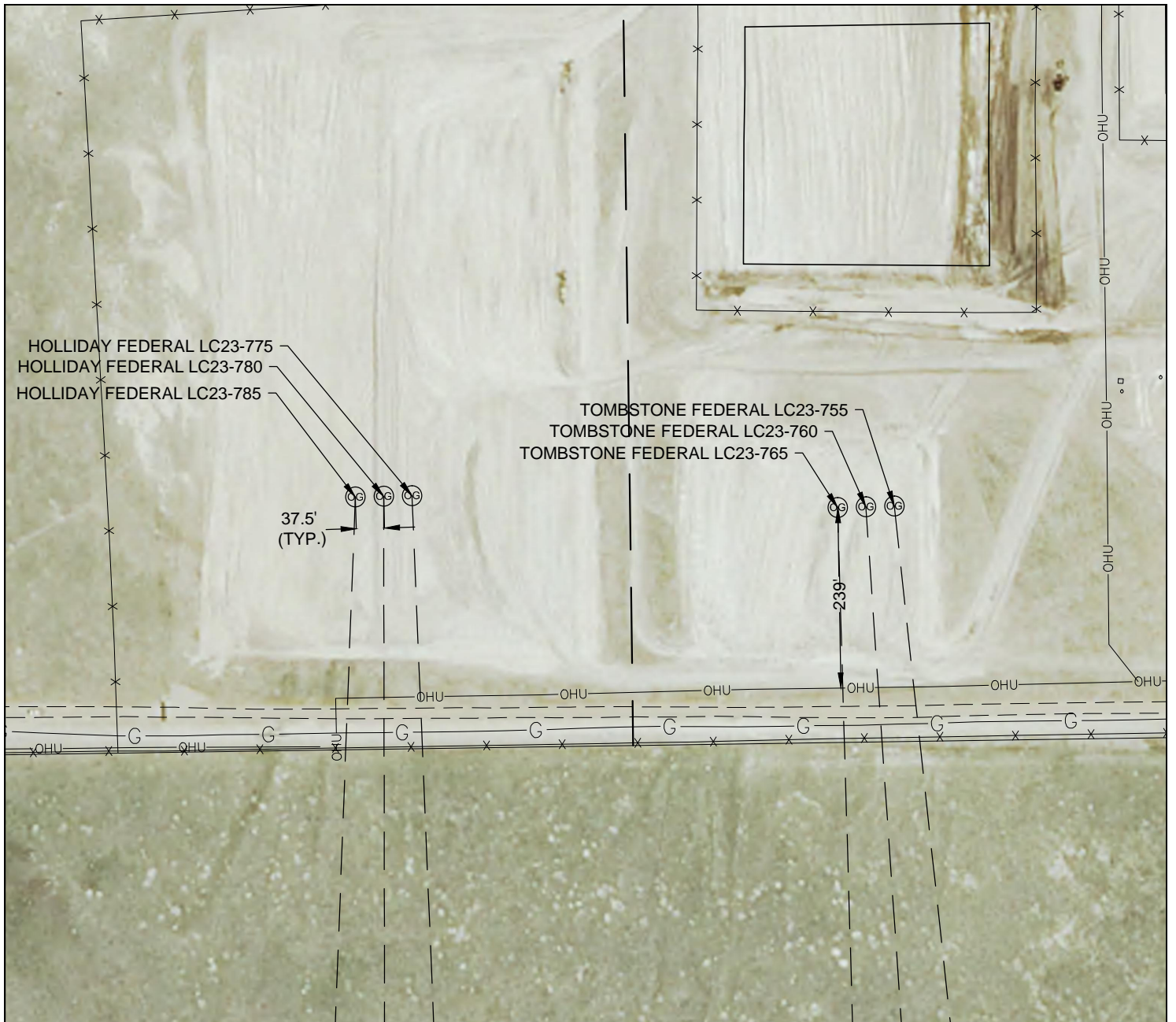
SHEET 3 OF 4

FIELD DATE: 04-23-14
DRAWING DATE: 07-31-15
DRAWN BY: JWJ
CHECKED BY: KAD

# MULTI WELL PLAN

## LC11-13 PAD

SECTION: 11  
TOWNSHIP: 9N  
RANGE: 59W



SHEET 4 OF 4

FIELD DATE: 04-23-14
DRAWING DATE: 08-03-15
DRAWN BY: KAD
CHECKED BY: JLG

