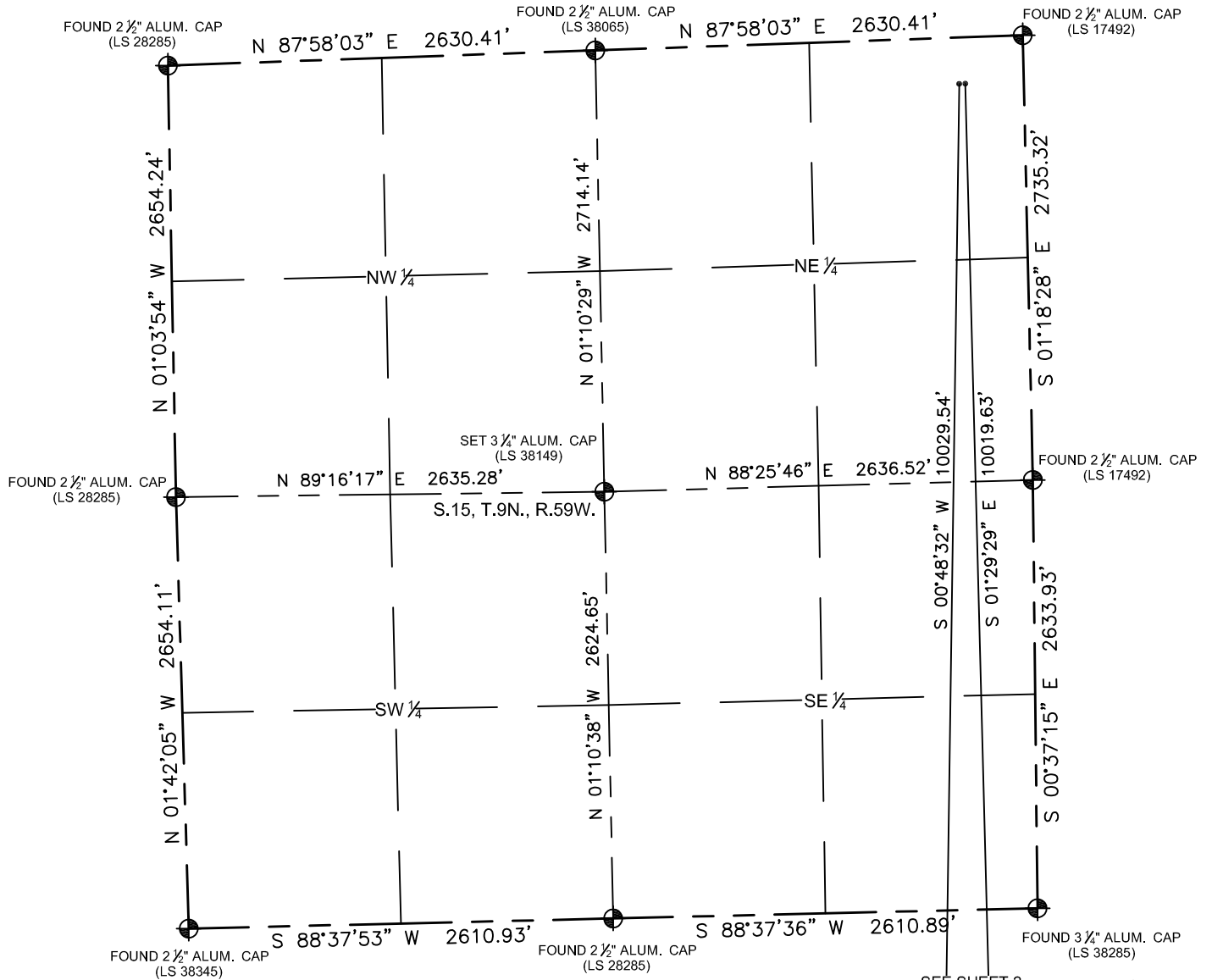


MULTI-WELL PLAN

LC15-01 PAD

THIS MAP DOES NOT REPRESENT A BOUNDARY SURVEY

SECTION: 15
TOWNSHIP: 9N
RANGE: 59W



SEE SHEET 2

WELL PAD DETAIL

KRAMER FEDERAL
LC22-725

KRAMER FEDERAL
LC22-720

37.5

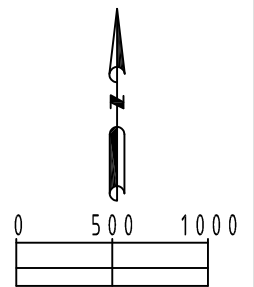
SHEET 1 OF 3

FIELD
DATE:
07-14-15

DRAWING
DATE:
07-31-15

DRAWN BY:
JWJ

CHECKED BY:
KAD



SCALE: 1"=1000'

LEGEND

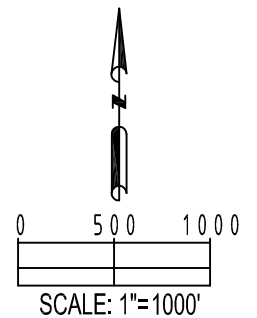
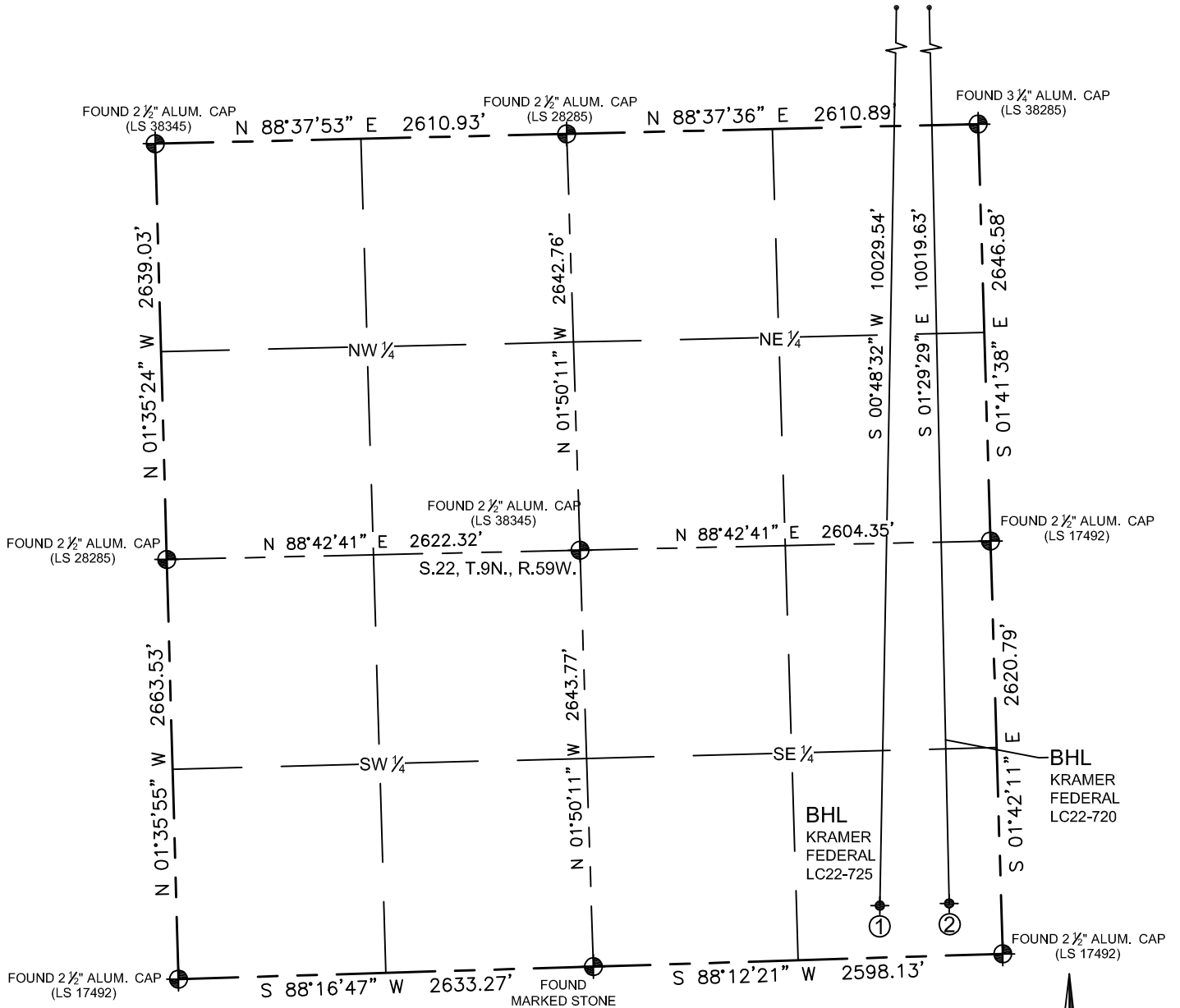
- = FOUND MONUMENT
- = PROPOSED WELL
- ⊕ = BOTTOM HOLE
- ◆ = EXISTING WELL

MULTI-WELL PLAN

LC15-01 PAD

THIS MAP DOES NOT REPRESENT A BOUNDARY SURVEY

SECTION: 15
TOWNSHIP: 9N
RANGE: 59W



SHEET 2 OF 3

FIELD DATE: 07-14-15
DRAWING DATE: 07-31-15
DRAWN BY: JWJ
CHECKED BY: KAD

①

BOTTOM HOLE:
KRAMER FEDERAL
LC22-725
330' FSL
770' FEL
LAT: 40.72992°N
LONG: 103.95737°W

②

BOTTOM HOLE:
KRAMER FEDERAL
LC22-720
330' FSL
330' FEL
LAT: 40.72994°N
LONG: 103.95578°W

LEGEND

- = FOUND MONUMENT
- = PROPOSED WELL
- ⊙ = BOTTOM HOLE
- ◆ = EXISTING WELL

MULTI WELL PLAN

LC15-01 PAD

SECTION: 15
TOWNSHIP: 9N
RANGE: 59W



SHEET 3 OF 3

FIELD DATE: 07-14-15
DRAWING DATE: 07-31-15
DRAWN BY: KAD
CHECKED BY: JLG

