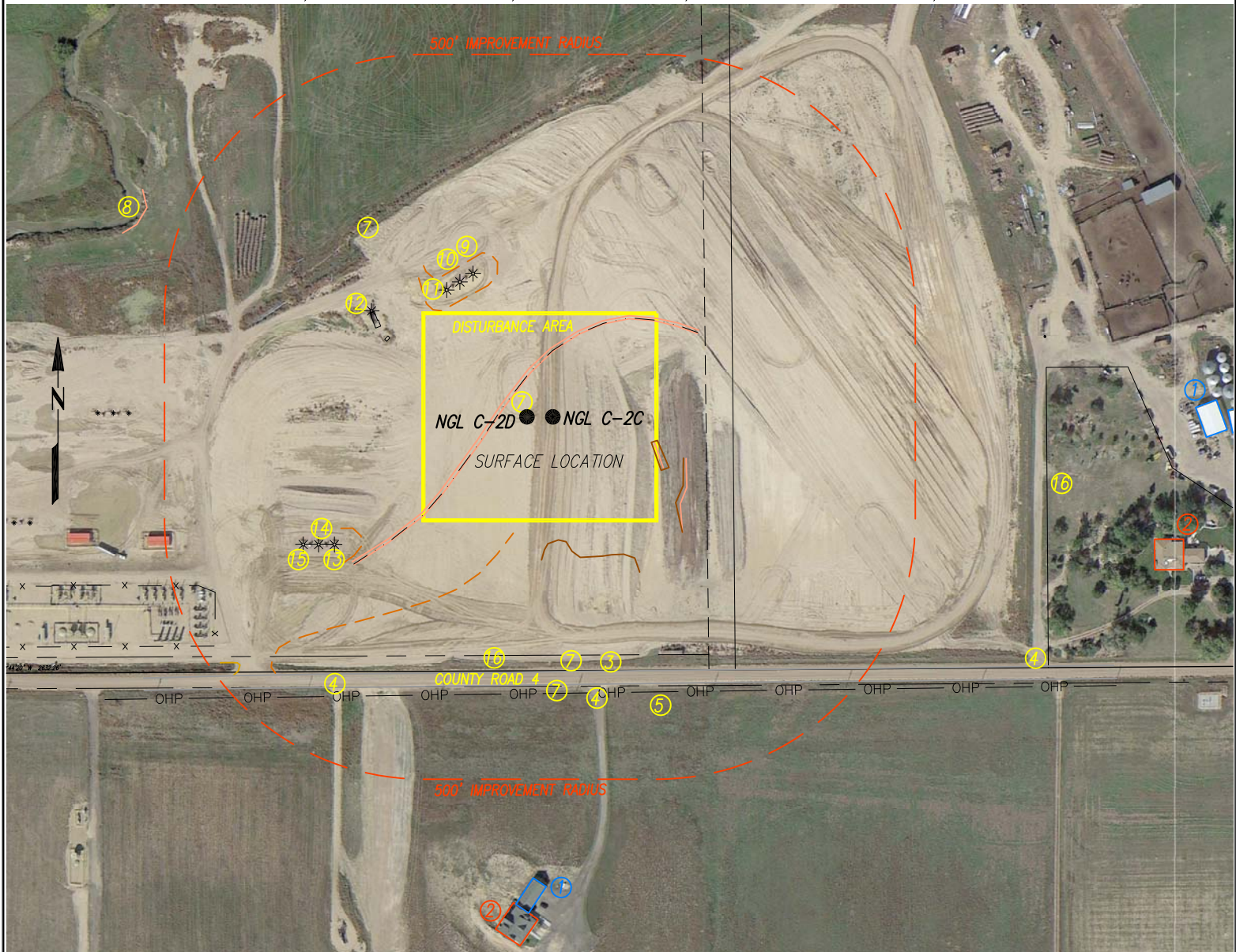


# LOCATION DRAWING: NGL C-2C & C-2D

SECTION 28, TOWNSHIP 1 NORTH, RANGE 67 WEST, 6TH P.M. WELD COUNTY, COLORADO



## NGL C-2C

### BUILDINGS:

- ① 1242' E
- ① 1304' E
- ① 891' S

### BUILDING UNITS:

- ② 941' S
- ② 1186' SE

HIGH OCCUPANCY  
BUILDING UNITS: 5280'

DESIGNATED OUTSIDE  
ACTIVITY AREA: 5280'

### ROADS:

- ③ COUNTY ROAD 4: 490' S
- ③ COUNTY ROAD 17: 2337' W
- ④ PRIVATE ROAD: 538' S,  
1053' SE, 668' SW

### UTILITIES:

- ⑤ ELECTRIC: 534' S

### RAILROAD:

- ⑥ 5280'

### WATER:

- ⑦ DITCH: 88' NW, 485' S, 530' S,  
520' NW

- ⑧ BIG DRY CREEK: 883' NW

### WELLS:

- ⑨ D&C FARMS 36C-33HZ WELL: 317' NW
- ⑩ D&C FARMS 14N-33HZ WELL: 316' NW
- ⑪ D&C FARMS 35C-33HZ WELL: 319' NW
- ⑫ YOXALL FARMS #1 WELL: 406' NW
- ⑬ HOWARD 28N-28HZ WELL: 489' SW
- ⑭ HOWARD 3C-28HZ WELL: 515' SW
- ⑮ HOWARD 29N-28HZ WELL: 541' SW

### NEAREST PROPERTY LINE:

- ⑯ 348' E, 490' S

## NGL C-2D

### UTILITIES:

- ⑤ ELECTRIC: 534' S

### RAILROAD:

- ⑥ 5280'

### WATER:

- ⑦ DITCH: 50' NW, 485' S, 530' S,  
479' NW

- ⑧ BIG DRY CREEK: 839' NW

### WELLS:

- ⑨ D&C FARMS 36C-33HZ WELL: 296' NW
- ⑩ D&C FARMS 14N-33HZ WELL: 291' NW
- ⑪ D&C FARMS 35C-33HZ WELL: 290' NW
- ⑫ YOXALL FARMS #1 WELL: 363' NW
- ⑬ HOWARD 28N-28HZ WELL: 446' SW
- ⑭ HOWARD 3C-28HZ WELL: 472' SW
- ⑮ HOWARD 29N-28HZ WELL: 498' SW

### NEAREST PROPERTY LINE:

- ⑯ 398' E, 490' S

PREPARED FOR:

**NGL WATER  
SOLUTIONS DJ, LLC**

**Acklam, Inc.**

DATE SURVEYED: 10/16/2015

DATE DRAFTED: 10/17/2015

DRAFTED BY: JAM CHECKED BY: SMF

JOB No. 155081 REVISED:

## LOCATION DRAWING - NGL C-2C & C-2D

**NGL C-2C**  
490' FSL & 2337' FWL  
**NGL C-2D**  
491' FSL & 2287' FWL



**NOTICE:** According to Colorado law you must commence any legal action based upon any defect in this survey within three years after you first discover such defect. In no event may any action based upon any defect in this survey be commenced more than ten years from the date of the certification shown hereon.