



PROJECT DETAILS: Weld County, CO NAD 83

Geodetic System: US State Plane 1983
Datum: North American Datum 1983
Ellipsoid: GRS 1980
Zone: Colorado Northern Zone
System Datum: Mean Sea Level
Local North: True

Project: Weld County, CO NAD 83
Site: Anschutz Equus Farms 4-62-20_21 NWNW Pad
Well: Anschutz Equus Farms 4-62-20-0108B2B
Wellbore: OH
Design: Plan 1



Azinuths to True North
Magnetic North: 8.29°



Magnetic Field
Strength: 52607.1nT
Dip Angle: 66.96°
Date: 9/23/2015
Model: BGGM2015

Plan: Plan 1 (Anschutz Equus Farms 4-62-20-0108B2B/OH)

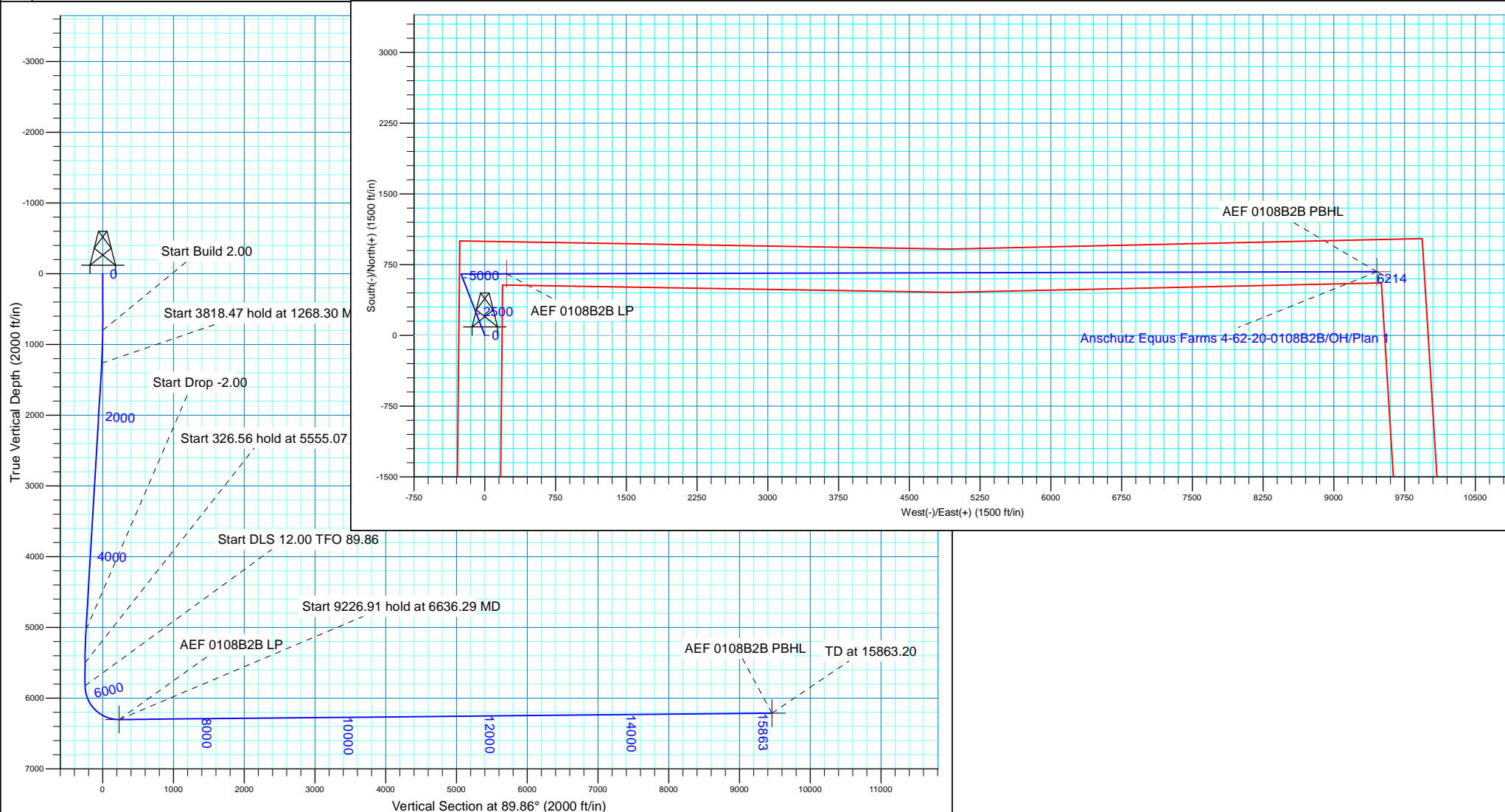
Created By: Seth Burstad Date: 9-9-2015

SECTION DETAILS

MD	Inc	Azi	TVD	+N/-S	+E/-W	Dleg	TFace	VSect
0.00	0.00	0.00	0.00	0.00	0.00	0.00	0.00	0.00
800.00	0.00	0.00	800.00	0.00	0.00	0.00	0.00	0.00
1268.30	9.37	338.95	1266.22	35.64	-13.72	2.00	338.95	-13.63
5086.77	9.37	338.95	5033.78	615.60	-236.91	0.00	0.00	-235.41
5555.07	0.00	0.00	5500.00	651.24	-250.63	2.00	180.00	-249.04
5881.63	0.00	0.00	5826.56	651.24	-250.63	0.00	0.00	-249.04
6636.29	90.56	89.86	6304.00	652.46	231.49	12.00	89.86	233.08
15863.20	90.56	89.86	6214.00	675.76	9457.93	0.00	0.00	9459.56

WELL DETAILS: Anschutz Equus Farms 4-62-20-0108B2B

+N/-S	+E/-W	Northing	Ground Level: Easting	4603.00 Latitude	Longitude
0.00	0.00	1355037.20	3318972.31	40° 18' 8.391 N	104° 21' 22.810 W





Bill Barrett Corp.

Weld County, CO NAD 83

Anschutz Equus Farms 4-62-20_21 NWNW Pad

Anschutz Equus Farms 4-62-20-0108B2B

OH

Plan: Plan 1

Standard Planning Report

23 September, 2015



Database:	Casper District	Local Co-ordinate Reference:	Well Anschutz Equus Farms 4-62-20-0108B2B
Company:	Bill Barrett Corp.	TVD Reference:	GL 4603' & KB 16' @ 4619.00ft
Project:	Weld County, CO NAD 83	MD Reference:	GL 4603' & KB 16' @ 4619.00ft
Site:	Anschutz Equus Farms 4-62-20_21 NWNW Pad	North Reference:	True
Well:	Anschutz Equus Farms 4-62-20-0108B2B	Survey Calculation Method:	Minimum Curvature
Wellbore:	OH		
Design:	Plan 1		

Project	Weld County, CO NAD 83		
Map System:	US State Plane 1983	System Datum:	Mean Sea Level
Geo Datum:	North American Datum 1983		
Map Zone:	Colorado Northern Zone		

Site						Anschutz Equus Farms 4-62-20_21 NWNW Pad											
Site Position:			Northing:			1,355,007.69 usft			Latitude:			40° 18' 8.100 N					
From:			Lat/Long			Easting:			3,318,971.86 usft			Longitude:			104° 21' 22.820 W		
Position Uncertainty:			0.00 ft			Slot Radius:			13.200 in			Grid Convergence:			0.74		

Well	Anschutz Equus Farms 4-62-20-0108B2B, 996' FNL 275' FWL Sec 20 T4N R62W					
Well Position	+N/-S	29.48 ft	Northing:	1,355,037.18 usft	Latitude:	40° 18' 8.391 N
	+E/-W	0.84 ft	Easting:	3,318,972.32 usft	Longitude:	104° 21' 22.810 W
Position Uncertainty		0.00 ft	Wellhead Elevation:	0.00 ft	Ground Level:	4,603.00 ft

Wellbore	OH				
Magnetics	Model Name	Sample Date	Declination (°)	Dip Angle (°)	Field Strength (nT)
	BGGM2015	9/23/2015	8.29	66.96	52,607

Design	Plan 1				
Audit Notes:					
Version:	Phase:	PLAN		Tie On Depth:	0.00
Vertical Section:	Depth From (TVD) (ft)	+N/-S (ft)	+E/-W (ft)	Direction (°)	
	0.00	0.00	0.00	89.86	

Plan Sections										
Measured Depth (ft)	Inclination (°)	Azimuth (°)	Vertical Depth (ft)	+N/-S (ft)	+E/-W (ft)	Dogleg Rate (°/100ft)	Build Rate (°/100ft)	Turn Rate (°/100ft)	TFO (°)	Target
0.00	0.00	0.00	0.00	0.00	0.00	0.00	0.00	0.00	0.00	
800.00	0.00	0.00	800.00	0.00	0.00	0.00	0.00	0.00	0.00	
1,268.30	9.37	338.95	1,266.22	35.64	-13.72	2.00	2.00	0.00	338.95	
5,086.77	9.37	338.95	5,033.78	615.60	-236.91	0.00	0.00	0.00	0.00	
5,555.07	0.00	0.00	5,500.00	651.24	-250.63	2.00	-2.00	0.00	180.00	
5,881.63	0.00	0.00	5,826.56	651.24	-250.63	0.00	0.00	0.00	0.00	
6,636.29	90.56	89.86	6,304.00	652.46	231.49	12.00	12.00	11.91	89.86	
15,863.20	90.56	89.86	6,214.00	675.77	9,457.93	0.00	0.00	0.00	0.00	AEF 0108B2B PBHL

Database:	Casper District	Local Co-ordinate Reference:	Well Anschutz Equus Farms 4-62-20-0108B2B
Company:	Bill Barrett Corp.	TVD Reference:	GL 4603' & KB 16' @ 4619.00ft
Project:	Weld County, CO NAD 83	MD Reference:	GL 4603' & KB 16' @ 4619.00ft
Site:	Anschutz Equus Farms 4-62-20_21 NWNW Pad	North Reference:	True
Well:	Anschutz Equus Farms 4-62-20-0108B2B	Survey Calculation Method:	Minimum Curvature
Wellbore:	OH		
Design:	Plan 1		

Planned Survey									
Measured Depth (ft)	Inclination (°)	Azimuth (°)	Vertical Depth (ft)	+N/-S (ft)	+E/-W (ft)	Vertical Section (ft)	Dogleg Rate (°/100ft)	Build Rate (°/100ft)	Turn Rate (°/100ft)
0.00	0.00	0.00	0.00	0.00	0.00	0.00	0.00	0.00	0.00
100.00	0.00	0.00	100.00	0.00	0.00	0.00	0.00	0.00	0.00
200.00	0.00	0.00	200.00	0.00	0.00	0.00	0.00	0.00	0.00
300.00	0.00	0.00	300.00	0.00	0.00	0.00	0.00	0.00	0.00
400.00	0.00	0.00	400.00	0.00	0.00	0.00	0.00	0.00	0.00
500.00	0.00	0.00	500.00	0.00	0.00	0.00	0.00	0.00	0.00
600.00	0.00	0.00	600.00	0.00	0.00	0.00	0.00	0.00	0.00
700.00	0.00	0.00	700.00	0.00	0.00	0.00	0.00	0.00	0.00
800.00	0.00	0.00	800.00	0.00	0.00	0.00	0.00	0.00	0.00
Start Build 2.00									
900.00	2.00	338.95	899.98	1.63	-0.63	-0.62	2.00	2.00	0.00
1,000.00	4.00	338.95	999.84	6.51	-2.51	-2.49	2.00	2.00	0.00
1,100.00	6.00	338.95	1,099.45	14.65	-5.64	-5.60	2.00	2.00	0.00
1,200.00	8.00	338.95	1,198.70	26.02	-10.01	-9.95	2.00	2.00	0.00
1,268.30	9.37	338.95	1,266.22	35.64	-13.72	-13.63	2.00	2.00	0.00
Start 3818.47 hold at 1268.30 MD									
1,300.00	9.37	338.95	1,297.49	40.46	-15.57	-15.47	0.00	0.00	0.00
1,400.00	9.37	338.95	1,396.16	55.65	-21.42	-21.28	0.00	0.00	0.00
1,500.00	9.37	338.95	1,494.83	70.83	-27.26	-27.09	0.00	0.00	0.00
1,600.00	9.37	338.95	1,593.50	86.02	-33.11	-32.90	0.00	0.00	0.00
1,700.00	9.37	338.95	1,692.16	101.21	-38.95	-38.70	0.00	0.00	0.00
1,800.00	9.37	338.95	1,790.83	116.40	-44.80	-44.51	0.00	0.00	0.00
1,900.00	9.37	338.95	1,889.50	131.59	-50.64	-50.32	0.00	0.00	0.00
2,000.00	9.37	338.95	1,988.16	146.77	-56.49	-56.13	0.00	0.00	0.00
2,100.00	9.37	338.95	2,086.83	161.96	-62.33	-61.94	0.00	0.00	0.00
2,200.00	9.37	338.95	2,185.50	177.15	-68.18	-67.74	0.00	0.00	0.00
2,300.00	9.37	338.95	2,284.16	192.34	-74.02	-73.55	0.00	0.00	0.00
2,400.00	9.37	338.95	2,382.83	207.53	-79.87	-79.36	0.00	0.00	0.00
2,500.00	9.37	338.95	2,481.50	222.71	-85.71	-85.17	0.00	0.00	0.00
2,600.00	9.37	338.95	2,580.16	237.90	-91.56	-90.98	0.00	0.00	0.00
2,700.00	9.37	338.95	2,678.83	253.09	-97.40	-96.78	0.00	0.00	0.00
2,800.00	9.37	338.95	2,777.50	268.28	-103.25	-102.59	0.00	0.00	0.00
2,900.00	9.37	338.95	2,876.16	283.47	-109.09	-108.40	0.00	0.00	0.00
3,000.00	9.37	338.95	2,974.83	298.66	-114.94	-114.21	0.00	0.00	0.00
3,100.00	9.37	338.95	3,073.50	313.84	-120.78	-120.02	0.00	0.00	0.00
3,200.00	9.37	338.95	3,172.17	329.03	-126.63	-125.82	0.00	0.00	0.00
3,300.00	9.37	338.95	3,270.83	344.22	-132.47	-131.63	0.00	0.00	0.00
3,400.00	9.37	338.95	3,369.50	359.41	-138.32	-137.44	0.00	0.00	0.00
3,500.00	9.37	338.95	3,468.17	374.60	-144.16	-143.25	0.00	0.00	0.00
3,600.00	9.37	338.95	3,566.83	389.78	-150.01	-149.06	0.00	0.00	0.00
3,700.00	9.37	338.95	3,665.50	404.97	-155.85	-154.86	0.00	0.00	0.00
3,800.00	9.37	338.95	3,764.17	420.16	-161.70	-160.67	0.00	0.00	0.00
3,900.00	9.37	338.95	3,862.83	435.35	-167.54	-166.48	0.00	0.00	0.00
4,000.00	9.37	338.95	3,961.50	450.54	-173.39	-172.29	0.00	0.00	0.00
4,100.00	9.37	338.95	4,060.17	465.73	-179.23	-178.10	0.00	0.00	0.00
4,200.00	9.37	338.95	4,158.83	480.91	-185.08	-183.90	0.00	0.00	0.00
4,300.00	9.37	338.95	4,257.50	496.10	-190.92	-189.71	0.00	0.00	0.00
4,400.00	9.37	338.95	4,356.17	511.29	-196.77	-195.52	0.00	0.00	0.00
4,500.00	9.37	338.95	4,454.83	526.48	-202.62	-201.33	0.00	0.00	0.00
4,600.00	9.37	338.95	4,553.50	541.67	-208.46	-207.14	0.00	0.00	0.00
4,666.38	9.37	338.95	4,619.00	551.75	-212.34	-210.99	0.00	0.00	0.00
BASE OF FOX HILLS									

Database:	Casper District	Local Co-ordinate Reference:	Well Anschutz Equus Farms 4-62-20-0108B2B
Company:	Bill Barrett Corp.	TVD Reference:	GL 4603' & KB 16' @ 4619.00ft
Project:	Weld County, CO NAD 83	MD Reference:	GL 4603' & KB 16' @ 4619.00ft
Site:	Anschutz Equus Farms 4-62-20_21 NWNW Pad	North Reference:	True
Well:	Anschutz Equus Farms 4-62-20-0108B2B	Survey Calculation Method:	Minimum Curvature
Wellbore:	OH		
Design:	Plan 1		

Planned Survey									
Measured Depth (ft)	Inclination (°)	Azimuth (°)	Vertical Depth (ft)	+N/-S (ft)	+E/-W (ft)	Vertical Section (ft)	Dogleg Rate (°/100ft)	Build Rate (°/100ft)	Turn Rate (°/100ft)
4,700.00	9.37	338.95	4,652.17	556.85	-214.31	-212.94	0.00	0.00	0.00
4,800.00	9.37	338.95	4,750.84	572.04	-220.15	-218.75	0.00	0.00	0.00
4,855.91	9.37	338.95	4,806.00	580.53	-223.42	-222.00	0.00	0.00	0.00
SHANNON									
4,900.00	9.37	338.95	4,849.50	587.23	-226.00	-224.56	0.00	0.00	0.00
5,000.00	9.37	338.95	4,948.17	602.42	-231.84	-230.37	0.00	0.00	0.00
5,086.77	9.37	338.95	5,033.78	615.60	-236.91	-235.41	0.00	0.00	0.00
Start Drop -2.00									
5,100.00	9.10	338.95	5,046.84	617.58	-237.68	-236.17	2.00	-2.00	0.00
5,200.00	7.10	338.95	5,145.84	630.73	-242.74	-241.19	2.00	-2.00	0.00
5,300.00	5.10	338.95	5,245.27	640.65	-246.55	-244.99	2.00	-2.00	0.00
5,400.00	3.10	338.95	5,345.01	647.32	-249.12	-247.54	2.00	-2.00	0.00
5,500.00	1.10	338.95	5,444.93	650.75	-250.44	-248.85	2.00	-2.00	0.00
5,555.07	0.00	0.00	5,500.00	651.24	-250.63	-249.04	2.00	-2.00	0.00
Start 326.56 hold at 5555.07 MD									
5,600.00	0.00	0.00	5,544.93	651.24	-250.63	-249.04	0.00	0.00	0.00
5,700.00	0.00	0.00	5,644.93	651.24	-250.63	-249.04	0.00	0.00	0.00
5,800.00	0.00	0.00	5,744.93	651.24	-250.63	-249.04	0.00	0.00	0.00
5,881.63	0.00	0.00	5,826.56	651.24	-250.63	-249.04	0.00	0.00	0.00
Start DLS 12.00 TFO 89.86									
5,900.00	2.20	89.86	5,844.93	651.24	-250.28	-248.68	12.00	12.00	0.00
6,000.00	14.20	89.86	5,943.72	651.28	-236.03	-234.44	12.00	12.00	0.00
6,100.00	26.20	89.86	6,037.40	651.36	-201.56	-199.97	12.00	12.00	0.00
6,106.27	26.96	89.86	6,043.00	651.37	-198.75	-197.16	12.00	12.00	0.00
SHARON SPRINGS									
6,200.00	38.20	89.86	6,121.86	651.50	-148.36	-146.77	12.00	12.00	0.00
6,256.38	44.97	89.86	6,164.00	651.59	-110.96	-109.37	12.00	12.00	0.00
NIOBRARA									
6,300.00	50.20	89.86	6,193.41	651.67	-78.77	-77.18	12.00	12.00	0.00
6,323.50	53.02	89.86	6,208.00	651.72	-60.35	-58.76	12.00	12.00	0.00
A CHALK									
6,333.61	54.24	89.86	6,214.00	651.74	-52.21	-50.61	12.00	12.00	0.00
TD (HORIZONTAL)									
6,342.28	55.28	89.86	6,219.00	651.76	-45.13	-43.54	12.00	12.00	0.00
A MARL									
6,400.00	62.20	89.86	6,248.93	651.88	4.18	5.78	12.00	12.00	0.00
6,444.97	67.60	89.86	6,268.00	651.99	44.89	46.48	12.00	12.00	0.00
TOP "B" TARGET									
6,500.00	74.20	89.86	6,286.00	652.12	96.86	98.46	12.00	12.00	0.00
6,600.00	86.20	89.86	6,302.98	652.37	195.23	196.82	12.00	12.00	0.00
6,636.29	90.56	89.86	6,304.00	652.46	231.49	233.08	12.00	12.00	0.00
Start 9226.91 hold at 6636.29 MD									
6,636.71	90.59	89.86	6,304.00	652.46	231.91	233.51	6.93	6.93	0.00
LANDING POINT									
6,700.00	90.56	89.86	6,303.38	652.62	295.20	296.79	0.05	-0.05	0.00
6,800.00	90.56	89.86	6,302.41	652.87	395.19	396.79	0.00	0.00	0.00
6,900.00	90.56	89.86	6,301.43	653.12	495.19	496.78	0.00	0.00	0.00
7,000.00	90.56	89.86	6,300.45	653.38	595.18	596.78	0.00	0.00	0.00
7,100.00	90.56	89.86	6,299.48	653.63	695.18	696.77	0.00	0.00	0.00
7,200.00	90.56	89.86	6,298.50	653.88	795.17	796.77	0.00	0.00	0.00
7,300.00	90.56	89.86	6,297.53	654.14	895.17	896.76	0.00	0.00	0.00

Database:	Casper District	Local Co-ordinate Reference:	Well Anschutz Equus Farms 4-62-20-0108B2B
Company:	Bill Barrett Corp.	TVD Reference:	GL 4603' & KB 16' @ 4619.00ft
Project:	Weld County, CO NAD 83	MD Reference:	GL 4603' & KB 16' @ 4619.00ft
Site:	Anschutz Equus Farms 4-62-20_21 NWNW Pad	North Reference:	True
Well:	Anschutz Equus Farms 4-62-20-0108B2B	Survey Calculation Method:	Minimum Curvature
Wellbore:	OH		
Design:	Plan 1		

Planned Survey									
Measured Depth (ft)	Inclination (°)	Azimuth (°)	Vertical Depth (ft)	+N/-S (ft)	+E/-W (ft)	Vertical Section (ft)	Dogleg Rate (°/100ft)	Build Rate (°/100ft)	Turn Rate (°/100ft)
7,400.00	90.56	89.86	6,296.55	654.39	995.16	996.76	0.00	0.00	0.00
7,500.00	90.56	89.86	6,295.58	654.64	1,095.16	1,096.76	0.00	0.00	0.00
7,600.00	90.56	89.86	6,294.60	654.89	1,195.15	1,196.75	0.00	0.00	0.00
7,700.00	90.56	89.86	6,293.63	655.15	1,295.15	1,296.75	0.00	0.00	0.00
7,800.00	90.56	89.86	6,292.65	655.40	1,395.14	1,396.74	0.00	0.00	0.00
7,900.00	90.56	89.86	6,291.68	655.65	1,495.14	1,496.74	0.00	0.00	0.00
8,000.00	90.56	89.86	6,290.70	655.90	1,595.13	1,596.73	0.00	0.00	0.00
8,100.00	90.56	89.86	6,289.72	656.16	1,695.13	1,696.73	0.00	0.00	0.00
8,200.00	90.56	89.86	6,288.75	656.41	1,795.12	1,796.72	0.00	0.00	0.00
8,300.00	90.56	89.86	6,287.77	656.66	1,895.12	1,896.72	0.00	0.00	0.00
8,400.00	90.56	89.86	6,286.80	656.91	1,995.11	1,996.71	0.00	0.00	0.00
8,500.00	90.56	89.86	6,285.82	657.17	2,095.11	2,096.71	0.00	0.00	0.00
8,600.00	90.56	89.86	6,284.85	657.42	2,195.10	2,196.70	0.00	0.00	0.00
8,700.00	90.56	89.86	6,283.87	657.67	2,295.10	2,296.70	0.00	0.00	0.00
8,800.00	90.56	89.86	6,282.90	657.92	2,395.09	2,396.69	0.00	0.00	0.00
8,900.00	90.56	89.86	6,281.92	658.18	2,495.09	2,496.69	0.00	0.00	0.00
9,000.00	90.56	89.86	6,280.95	658.43	2,595.08	2,596.68	0.00	0.00	0.00
9,100.00	90.56	89.86	6,279.97	658.68	2,695.08	2,696.68	0.00	0.00	0.00
9,200.00	90.56	89.86	6,279.00	658.94	2,795.07	2,796.67	0.00	0.00	0.00
9,300.00	90.56	89.86	6,278.02	659.19	2,895.07	2,896.67	0.00	0.00	0.00
9,400.00	90.56	89.86	6,277.04	659.44	2,995.06	2,996.66	0.00	0.00	0.00
9,500.00	90.56	89.86	6,276.07	659.69	3,095.06	3,096.66	0.00	0.00	0.00
9,600.00	90.56	89.86	6,275.09	659.95	3,195.05	3,196.66	0.00	0.00	0.00
9,700.00	90.56	89.86	6,274.12	660.20	3,295.05	3,296.65	0.00	0.00	0.00
9,800.00	90.56	89.86	6,273.14	660.45	3,395.04	3,396.65	0.00	0.00	0.00
9,900.00	90.56	89.86	6,272.17	660.70	3,495.04	3,496.64	0.00	0.00	0.00
10,000.00	90.56	89.86	6,271.19	660.96	3,595.03	3,596.64	0.00	0.00	0.00
10,100.00	90.56	89.86	6,270.22	661.21	3,695.03	3,696.63	0.00	0.00	0.00
10,200.00	90.56	89.86	6,269.24	661.46	3,795.02	3,796.63	0.00	0.00	0.00
10,300.00	90.56	89.86	6,268.27	661.71	3,895.02	3,896.62	0.00	0.00	0.00
10,400.00	90.56	89.86	6,267.29	661.97	3,995.01	3,996.62	0.00	0.00	0.00
10,500.00	90.56	89.86	6,266.31	662.22	4,095.01	4,096.61	0.00	0.00	0.00
10,600.00	90.56	89.86	6,265.34	662.47	4,195.00	4,196.61	0.00	0.00	0.00
10,700.00	90.56	89.86	6,264.36	662.73	4,295.00	4,296.60	0.00	0.00	0.00
10,800.00	90.56	89.86	6,263.39	662.98	4,394.99	4,396.60	0.00	0.00	0.00
10,900.00	90.56	89.86	6,262.41	663.23	4,494.99	4,496.59	0.00	0.00	0.00
11,000.00	90.56	89.86	6,261.44	663.48	4,594.98	4,596.59	0.00	0.00	0.00
11,100.00	90.56	89.86	6,260.46	663.74	4,694.98	4,696.58	0.00	0.00	0.00
11,200.00	90.56	89.86	6,259.49	663.99	4,794.97	4,796.58	0.00	0.00	0.00
11,300.00	90.56	89.86	6,258.51	664.24	4,894.97	4,896.57	0.00	0.00	0.00
11,400.00	90.56	89.86	6,257.54	664.49	4,994.96	4,996.57	0.00	0.00	0.00
11,500.00	90.56	89.86	6,256.56	664.75	5,094.96	5,096.57	0.00	0.00	0.00
11,600.00	90.56	89.86	6,255.58	665.00	5,194.95	5,196.56	0.00	0.00	0.00
11,700.00	90.56	89.86	6,254.61	665.25	5,294.95	5,296.56	0.00	0.00	0.00
11,800.00	90.56	89.86	6,253.63	665.50	5,394.94	5,396.55	0.00	0.00	0.00
11,900.00	90.56	89.86	6,252.66	665.76	5,494.94	5,496.55	0.00	0.00	0.00
12,000.00	90.56	89.86	6,251.68	666.01	5,594.93	5,596.54	0.00	0.00	0.00
12,100.00	90.56	89.86	6,250.71	666.26	5,694.93	5,696.54	0.00	0.00	0.00
12,200.00	90.56	89.86	6,249.73	666.52	5,794.92	5,796.53	0.00	0.00	0.00
12,300.00	90.56	89.86	6,248.76	666.77	5,894.92	5,896.53	0.00	0.00	0.00
12,400.00	90.56	89.86	6,247.78	667.02	5,994.91	5,996.52	0.00	0.00	0.00
12,500.00	90.56	89.86	6,246.81	667.27	6,094.91	6,096.52	0.00	0.00	0.00

Database:	Casper District	Local Co-ordinate Reference:	Well Anschutz Equus Farms 4-62-20-0108B2B
Company:	Bill Barrett Corp.	TVD Reference:	GL 4603' & KB 16' @ 4619.00ft
Project:	Weld County, CO NAD 83	MD Reference:	GL 4603' & KB 16' @ 4619.00ft
Site:	Anschutz Equus Farms 4-62-20_21 NWNW Pad	North Reference:	True
Well:	Anschutz Equus Farms 4-62-20-0108B2B	Survey Calculation Method:	Minimum Curvature
Wellbore:	OH		
Design:	Plan 1		

Planned Survey									
Measured Depth (ft)	Inclination (°)	Azimuth (°)	Vertical Depth (ft)	+N/-S (ft)	+E/-W (ft)	Vertical Section (ft)	Dogleg Rate (°/100ft)	Build Rate (°/100ft)	Turn Rate (°/100ft)
12,600.00	90.56	89.86	6,245.83	667.53	6,194.90	6,196.51	0.00	0.00	0.00
12,700.00	90.56	89.86	6,244.85	667.78	6,294.90	6,296.51	0.00	0.00	0.00
12,800.00	90.56	89.86	6,243.88	668.03	6,394.89	6,396.50	0.00	0.00	0.00
12,900.00	90.56	89.86	6,242.90	668.28	6,494.88	6,496.50	0.00	0.00	0.00
13,000.00	90.56	89.86	6,241.93	668.54	6,594.88	6,596.49	0.00	0.00	0.00
13,100.00	90.56	89.86	6,240.95	668.79	6,694.87	6,696.49	0.00	0.00	0.00
13,200.00	90.56	89.86	6,239.98	669.04	6,794.87	6,796.48	0.00	0.00	0.00
13,300.00	90.56	89.86	6,239.00	669.29	6,894.86	6,896.48	0.00	0.00	0.00
13,400.00	90.56	89.86	6,238.03	669.55	6,994.86	6,996.47	0.00	0.00	0.00
13,500.00	90.56	89.86	6,237.05	669.80	7,094.85	7,096.47	0.00	0.00	0.00
13,600.00	90.56	89.86	6,236.08	670.05	7,194.85	7,196.47	0.00	0.00	0.00
13,700.00	90.56	89.86	6,235.10	670.31	7,294.84	7,296.46	0.00	0.00	0.00
13,800.00	90.56	89.86	6,234.13	670.56	7,394.84	7,396.46	0.00	0.00	0.00
13,900.00	90.56	89.86	6,233.15	670.81	7,494.83	7,496.45	0.00	0.00	0.00
14,000.00	90.56	89.86	6,232.17	671.06	7,594.83	7,596.45	0.00	0.00	0.00
14,100.00	90.56	89.86	6,231.20	671.32	7,694.82	7,696.44	0.00	0.00	0.00
14,200.00	90.56	89.86	6,230.22	671.57	7,794.82	7,796.44	0.00	0.00	0.00
14,300.00	90.56	89.86	6,229.25	671.82	7,894.81	7,896.43	0.00	0.00	0.00
14,400.00	90.56	89.86	6,228.27	672.07	7,994.81	7,996.43	0.00	0.00	0.00
14,500.00	90.56	89.86	6,227.30	672.33	8,094.80	8,096.42	0.00	0.00	0.00
14,600.00	90.56	89.86	6,226.32	672.58	8,194.80	8,196.42	0.00	0.00	0.00
14,700.00	90.56	89.86	6,225.35	672.83	8,294.79	8,296.41	0.00	0.00	0.00
14,800.00	90.56	89.86	6,224.37	673.08	8,394.79	8,396.41	0.00	0.00	0.00
14,900.00	90.56	89.86	6,223.40	673.34	8,494.78	8,496.40	0.00	0.00	0.00
15,000.00	90.56	89.86	6,222.42	673.59	8,594.78	8,596.40	0.00	0.00	0.00
15,100.00	90.56	89.86	6,221.44	673.84	8,694.77	8,696.39	0.00	0.00	0.00
15,200.00	90.56	89.86	6,220.47	674.09	8,794.77	8,796.39	0.00	0.00	0.00
15,300.00	90.56	89.86	6,219.49	674.35	8,894.76	8,896.38	0.00	0.00	0.00
15,400.00	90.56	89.86	6,218.52	674.60	8,994.76	8,996.38	0.00	0.00	0.00
15,500.00	90.56	89.86	6,217.54	674.85	9,094.75	9,096.37	0.00	0.00	0.00
15,600.00	90.56	89.86	6,216.57	675.11	9,194.75	9,196.37	0.00	0.00	0.00
15,700.00	90.56	89.86	6,215.59	675.36	9,294.74	9,296.37	0.00	0.00	0.00
15,800.00	90.56	89.86	6,214.62	675.61	9,394.74	9,396.36	0.00	0.00	0.00
15,863.20	90.56	89.86	6,214.00	675.77	9,457.93	9,459.56	0.00	0.00	0.00
TD at 15863.20									

Design Targets									
Target Name	Dip Angle (°)	Dip Dir. (°)	TVD (ft)	+N/-S (ft)	+E/-W (ft)	Northing (usft)	Easting (usft)	Latitude	Longitude
AEF 0108B2B PBHL - hit/miss target - Shape	0.00	0.00	6,214.00	675.77	9,457.93	1,355,834.87	3,328,420.73	40° 18' 15.052 N	104° 19' 20.730 W
AEF 0108B2B LP - plan misses target center by 0.01ft at 6636.29ft MD (6304.00 TVD, 652.46 N, 231.49 E) - Point	0.00	0.00	6,304.00	652.47	231.49	1,355,692.58	3,319,195.37	40° 18' 14.839 N	104° 21' 19.822 W

Database:	Casper District	Local Co-ordinate Reference:	Well Anschutz Equus Farms 4-62-20-0108B2B
Company:	Bill Barrett Corp.	TVD Reference:	GL 4603' & KB 16' @ 4619.00ft
Project:	Weld County, CO NAD 83	MD Reference:	GL 4603' & KB 16' @ 4619.00ft
Site:	Anschutz Equus Farms 4-62-20_21 NWNW Pad	North Reference:	True
Well:	Anschutz Equus Farms 4-62-20-0108B2B	Survey Calculation Method:	Minimum Curvature
Wellbore:	OH		
Design:	Plan 1		

Casing Points					
Measured Depth (ft)	Vertical Depth (ft)	Name	Casing Diameter (in)	Hole Diameter (in)	
15,863.20	6,214.00	7"	7.000	8.750	

Formations						
Measured Depth (ft)	Vertical Depth (ft)	Name	Lithology	Dip (°)	Dip Direction (°)	
4,666.38	4,619.00	BASE OF FOX HILLS		0.00		
4,855.91	4,806.00	SHANNON		0.00		
6,106.27	6,043.00	SHARON SPRINGS		0.00		
6,256.38	6,164.00	NIOBRARA		0.00		
6,323.50	6,208.00	A CHALK		0.00		
6,333.61	6,214.00	TD (HORIZONTAL)		0.00		
6,342.28	6,219.00	A MARL		0.00		
6,444.97	6,268.00	TOP "B" TARGET		0.00		
6,636.71	6,304.00	LANDING POINT		0.00		

Plan Annotations					
Measured Depth (ft)	Vertical Depth (ft)	Local Coordinates			
		+N/-S (ft)	+E/-W (ft)	Comment	
800.00	800.00	0.00	0.00	Start Build 2.00	
1,268.30	1,266.22	35.64	-13.72	Start 3818.47 hold at 1268.30 MD	
5,086.77	5,033.78	615.60	-236.91	Start Drop -2.00	
5,555.07	5,500.00	651.24	-250.63	Start 326.56 hold at 5555.07 MD	
5,881.63	5,826.56	651.24	-250.63	Start DLS 12.00 TFO 89.86	
6,636.29	6,304.00	652.46	231.49	Start 9226.91 hold at 6636.29 MD	
15,863.20	6,214.00	675.77	9,457.93	TD at 15863.20	