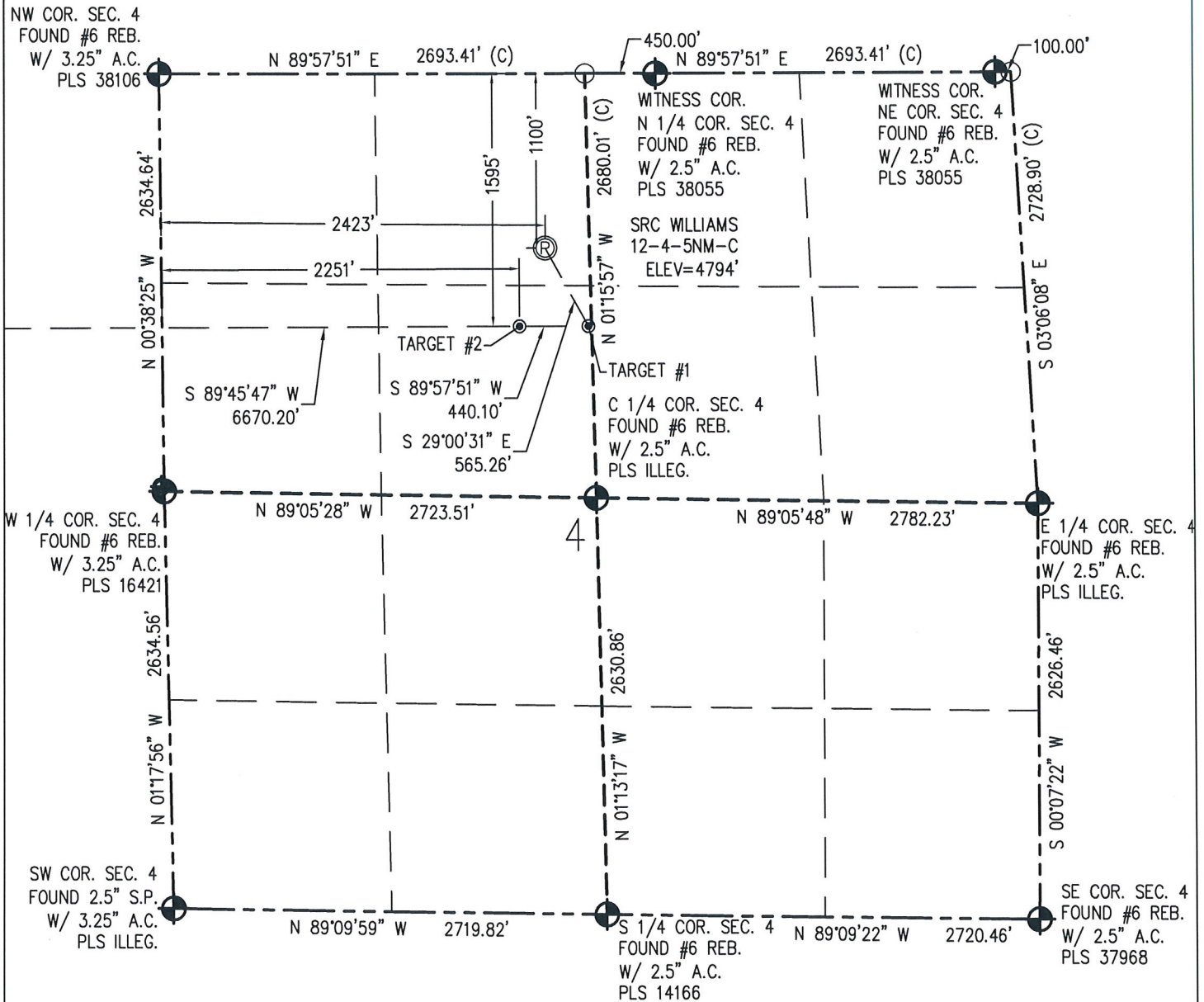


**WELL LOCATION CERTIFICATE**  
THIS MAP DOES NOT REPRESENT A BOUNDARY SURVEY

IN ACCORDANCE WITH A REQUEST FROM CRAIG RASMUSON - SYNERGY RESOURCES, BASELINE ENGINEERING CORP. HAS DETERMINED THE LOCATION OF THE SRC WILLIAMS 12-4-5NM-C TO BE 1100' FNL AND 2423' FWL, AS MEASURED AT NINETY (90) DEGREES FROM THE SECTION LINE OF SECTION 4, TOWNSHIP 4 NORTH, RANGE 67 WEST AND THE BOTTOM HOLE LOCATION TO BE 1595' FNL AND 460' FWL OF SECTION 5, TOWNSHIP 4 NORTH, RANGE 67 WEST, 6TH PRINCIPAL MERIDIAN, WELD COUNTY, COLORADO.

I HEREBY CERTIFY THAT THIS WELL LOCATION CERTIFICATE WAS PREPARED BY ME, OR UNDER MY DIRECT SUPERVISION, THAT THE FIELD WORK WAS COMPLETED ON 8/17/2015, THAT IT IS NOT A LAND SURVEY PLAT OR AN IMPROVEMENT SURVEY PLAT, AND THAT IT IS NOT TO BE RELIED UPON FOR ESTABLISHMENT OF FENCE, BUILDING, OR OTHER FUTURE IMPROVEMENT LINES.

0 1000  
Scale 1" = 1000 ft

## NOTES:

- 1) NEAREST CULTURAL ITEMS:  
BUILDING: 991' S  
BUILDING UNIT: 1413' S  
HIGH OCCUPANCY BUILDING UNIT: 5280'+  
DESIGNATED OUTSIDE ACTIVITY AREA: 5280'+  
PUBLIC ROAD: WELD COUNTY ROAD 48 1/2 1511' S  
ABOVE GROUND UTILITY: 1553' S  
RAILROAD: 2255' W  
PROPERTY LINE: 375' SE
- 2) SURFACE USE: CROPLAND.
- 3) OPERATOR NAME: WYATT HALL.
- 4) THE NEAREST EXISTING WELL IS: NONE IN QUARTER SECTION.
- 5) Bearings shown are grid bearings of the Colorado State Plane Coordinate System, North Zone, North American Datum 1983/2007. The lineal dimensions as contained herein are based upon the "U.S. Survey Foot."
- 6) Ground elevations are based on an observed GPS elevation (NAVD 88 DATUM).
- 7) IMPROVEMENTS: See LOCATION DRAWING for all visible improvements within 500' of disturbed area.

SURFACE HOLE:  
LATITUDE: 40.345977° N  
LONGITUDE: 104.897630° W  
PDOP: 1.3  
1/4, 1/4: NE1/4NW1/4

BOTTOM HOLE:  
LATITUDE: 40.344669° N  
LONGITUDE: 104.922162° W

TARGET #1:  
LATITUDE: 40.344616° N  
LONGITUDE: 104.896658° W  
TARGET #2:  
LATITUDE: 40.344623° N  
LONGITUDE: 104.898237° W

**LEGEND**

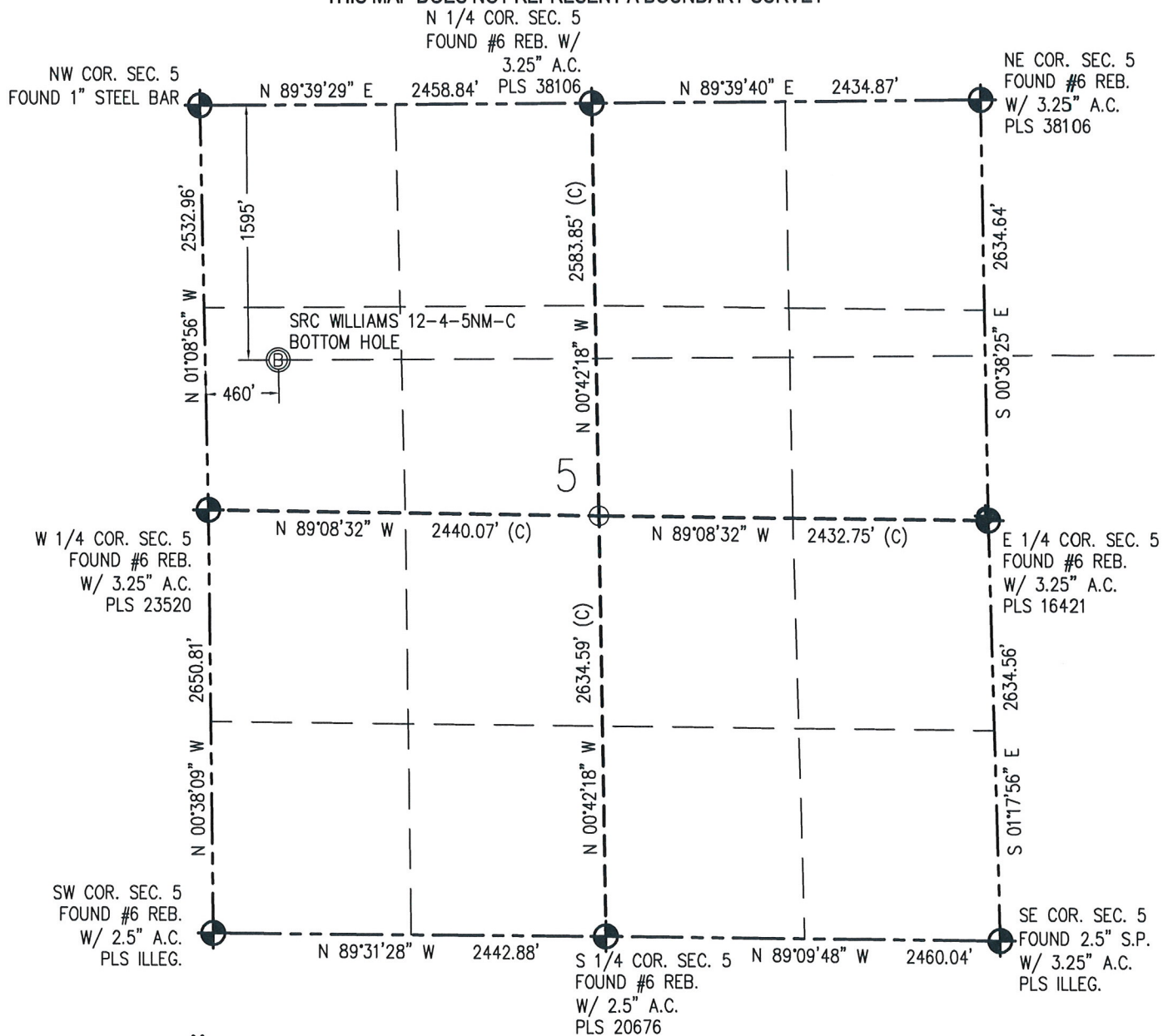
- - FOUND/SET SURVEY MONUMENT PER MONUMENT RECORD EXCEPTIONS NOTED.
- - CALCULATED SURVEY MONUMENT POSITION
- (C) - CALCULATED DIMENSION



AARON A. DEMO  
Professional Land Surveyor Registration No. 38285  
State of Colorado  
FOR AND ON BEHALF OF BASELINE ENGINEERING CORP.

Completed  
11/19/2015

PROJECT #: SYN04N67W04-01

**WELL LOCATION CERTIFICATE****THIS MAP DOES NOT REPRESENT A BOUNDARY SURVEY**

0 1000  
Scale 1" = 1000 ft

**NOTES:**

- 1) NEAREST CULTURAL ITEMS:  
BUILDING: 991' S  
BUILDING UNIT: 1413' S  
HIGH OCCUPANCY BUILDING UNIT: 5280'+  
DESIGNATED OUTSIDE ACTIVITY AREA: 5280'+  
PUBLIC ROAD: WELD COUNTY ROAD 48 1/2 1511' S  
ABOVE GROUND UTILITY: 1553' S  
RAILROAD: 2255' W  
PROPERTY LINE: 375' SE
- 2) SURFACE USE: CROPLAND.
- 3) OPERATOR NAME: WYATT HALL.
- 4) THE NEAREST EXISTING WELL IS: NONE IN QUARTER SECTION.
- 5) Bearings shown are grid bearings of the Colorado State Plane Coordinate System, North Zone, North American Datum 1983/2007. The lineal dimensions as contained herein are based upon the "U.S. Survey Foot."
- 6) Ground elevations are based on an observed GPS elevation (NAVD 88 DATUM).
- 7) IMPROVEMENTS: See LOCATION DRAWING for all visible improvements within 500' of disturbed area.

IN ACCORDANCE WITH A REQUEST FROM CRAIG RASMUSON - SYNERGY RESOURCES, BASELINE ENGINEERING CORP. HAS DETERMINED THE LOCATION OF THE SRC WILLIAMS 12-4-5NM-C TO BE 1100' FNL AND 2423' FWL, AS MEASURED AT NINETY (90) DEGREES FROM THE SECTION LINE OF SECTION 4, TOWNSHIP 4 NORTH, RANGE 67 WEST AND THE BOTTOM HOLE LOCATION TO BE 1595' FNL AND 460' FWL OF SECTION 5, TOWNSHIP 4 NORTH, RANGE 67 WEST, 6TH PRINCIPAL MERIDIAN, WELD COUNTY, COLORADO.

I HEREBY CERTIFY THAT THIS WELL LOCATION CERTIFICATE WAS PREPARED BY ME, OR UNDER MY DIRECT SUPERVISION, THAT THE FIELD WORK WAS COMPLETED ON 8/17/2015, THAT IT IS NOT A LAND SURVEY PLAT OR AN IMPROVEMENT SURVEY PLAT, AND THAT IT IS NOT TO BE RELIED UPON FOR ESTABLISHMENT OF FENCE, BUILDING, OR OTHER FUTURE IMPROVEMENT LINES.

**SURFACE HOLE:**  
LATITUDE: 40.345977° N  
LONGITUDE: 104.897630° W  
PDOP: 1.3  
1/4, 1/4: NE1/4NW1/4

**BOTTOM HOLE:**  
LATITUDE: 40.344669° N  
LONGITUDE: 104.922162° W

**TARGET #1:**  
LATITUDE: 40.344616° N  
LONGITUDE: 104.896658° W  
**TARGET #2:**  
LATITUDE: 40.344623° N  
LONGITUDE: 104.898237° W

**LEGEND**

- - FOUND/SET SURVEY MONUMENT PER MONUMENT RECORD EXCEPTIONS NOTED.
- - CALCULATED SURVEY MONUMENT POSITION
- (C) - CALCULATED DIMENSION



AARON A. DEMO  
Professional Land Surveyor Registration No. 38285  
State of Colorado  
FOR AND ON BEHALF OF BASELINE ENGINEERING CORP.

Completed  
11/19/2015

PROJECT #: SYN04N67W04-01