



December 7, 2015

VIA ELECTRONIC TRANSMITTAL

Director Matt Lepore
Colorado Oil and Gas Conservation Commission
1120 Lincoln Street Suite 801
Denver, Colorado 80203

RE: Rule 318.A.e.
CS-Bittersweet 3-1-13
CS-Bittersweet C1-1-13

Surface Location: SWSE, Section 36, Township 6 North, Range 66 West, Weld County, CO

Dear Mr. Lepore,

Extraction Oil and Gas is planning to drill the captioned horizontal wells in accordance with the provision of COGCC Rule 318A.e.

The proposed wellbore spacing unit consists of:

Section 1-5N-66W: W/2W/2
Section 2-5N-66W: E/2E/2
Section 11-5N-66W: E/2E/2
Section 12-5N-66W: W/2W/2
Section 13-5N-66W: NW/4 NW/4
Section 14-5N-66W: NE/4NE/4

The spacing unit is an 720-acre wellbore spacing unit for the Niobrara and Codell formations.

Extraction Oil and Gas hereby certifies to the Director that all Owners within the proposed spacing unit above were notified and 30 days have passed without objection.

If you have any questions or issues regarding this permit, please contact Alyssa Andrews at 720-420-5749.

Respectfully,

Alyssa Andrews
Agent for Extraction Oil and Gas

NAME: BITTERSWEET

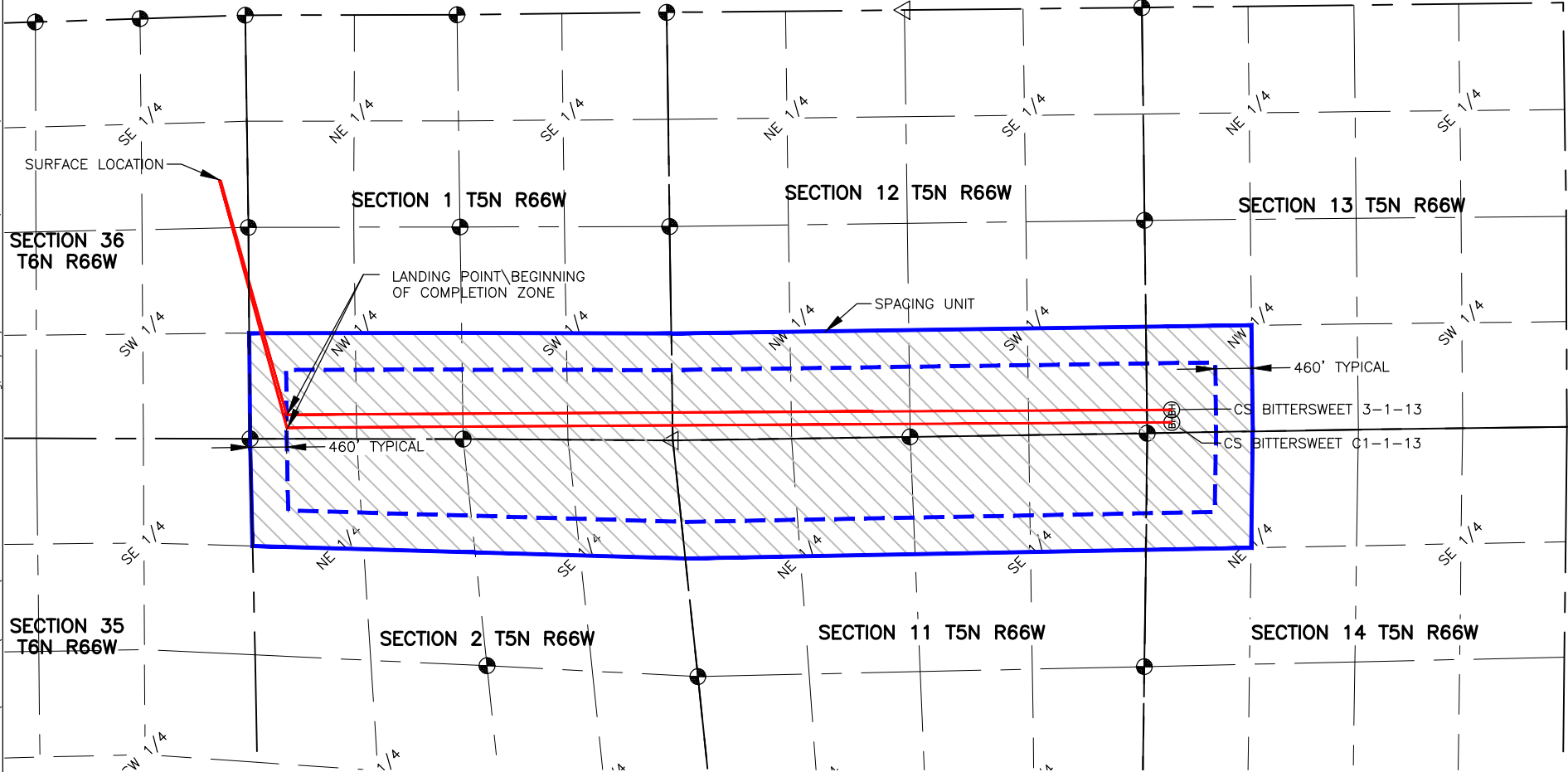
SPACING UNIT: E/2 E/2 SEC 2, W/2 W/2 SEC 1, E/2 E/2 SEC 11, W/2 W/2 SEC 12, NE/4 NE/4 SEC 14, NW/4 NW/4 SEC 13, T5N, R66W
UNIT ACREAGE: 720

WELL NAME	SURFACE LOCATION				LANDING POINT\BEGIN HORIZONTAL COMPLETION ZONE				BOTTOM HOLE\END HORIZONTAL COMPLETION ZONE				COMPLETION ZONE BEARING	COMPLETION ZONE LENGTH
	DIST.	DIR.	DIST.	DIR.	DIST.	DIR.	DIST.	DIR.	DIST.	DIR.	DIST.	DIR.		
CS-BITTERSWEET C1-1-13	357'	FSL	2056'	FEL	460'	FNL	140'	FWL	310'	FNL	129'	FWL	S00°20'09"E	11118.17'
CS-BITTERSWEET 3-1-13	341'	FSL	2063'	FEL	460'	FNL	303'	FWL	310'	FNL	288'	FWL	S00°20'09"E	11117.39'



0 2000

SCALE: 1"= 2000'
U.S. SURVEY FEET



LAMP RYNEARSON
& ASSOCIATES

4715 Innovation Drive 970.226.0342 | P
Fort Collins, CO 80525 970.226.0879 | F
www.LRA-Inc.com

Planned Spacing Unit Exhibit
C Street Directional Project
Bittersweet Spacing Unit

LEGEND

- ALIQUOT CORNER
- ⊕ BOTTOM HOLE
- COMPUTED FROM GLO RECORDS
- SECTION LINE
- QUARTER SECTION LINE
- SIXTEENTH LINE
- ◆ UNION COLONY CORNER
- △ COMPUTED ALIQUOT CORNER FROM MONUMENT ACCESSORIES

drawn by KJW date 10/15/15 cogcc id 430474 project - task number 0210012.00-502 book and page surface - location SW/4 SE/4 SEC 36 T6N R66W

path\filename P:_Engineering\0210012 MRI C Street\DRAWINGS\EXHIBITS\0210012PSUE-BITTERSWEET.dwg

P:_Engineering\0210012 MRI C Street\DRAWINGS\EXHIBITS\0210012PSUE-BITTERSWEET.dwg, 10/15/2015 3:18:01 PM, KELVIN WIESE, LAMP RYNEARSON & ASSOCIATES