

#### NOTES:

- DISTANCES ARE MEASURED PERPENDICULAR TO NEAREST SECTION LINE AND ARE SHOWN ON THE SAME SIDE OF THE SECTION LINE WHERE THE WELL IS LOCATED.
- THIS MAP DOES NOT REPRESENT A MONUMENTED BOUNDARY SURVEY. SIXTEENTH CORNER LOCATIONS ARE COMPUTED, UNLESS OTHERWISE NOTED.
- BOTTOM HOLE LOCATIONS AND HORIZONTAL COMPLETION ZONE PROVIDED BY OTHERS.

#### BASIS OF BEARING:

THE NORTH LINE OF THE NORTHEAST QUARTER OF SECTION 36-T6N-R66W BEARS S89°47'18"E BETWEEN THE NORTH QUARTER CORNER OF SECTION 36 MONUMENTED WITH 3 1/4" A.C. STAMPED "PLS 10855" AND THE NORTHEAST CORNER OF SECTION 36 MONUMENTED WITH A 2 1/2" A.C. STAMPED "LS 19585" BASED ON THE COLORADO NORTH 0501 STATE PLANE COORDINATE SYSTEM.

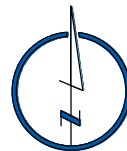
ELEVATIONS ARE BASED ON NAVD 88, AS OBSERVED FROM GPS OBSERVATIONS

#### LEGEND

- ALIQUOT CORNER A.C. ALUMINUM CAP
- BOTTOM HOLE R.B. RANGE BOX
- PROPOSED WELL

#### LAND SURVEYOR'S CERTIFICATION

LAMP, RYNEARSON & ASSOCIATES, INC., OF FT. COLLINS, COLORADO HAS IN ACCORDANCE WITH A REQUEST FROM DUSTIN DYK AT EXTRACTION OIL & GAS, DETERMINED THE SURFACE LOCATION OF THE WELL DESIGNATED AS CS-BITTERSWEET 3-1-13 TO BE 341' FROM THE SOUTH LINE AND 2063' FROM THE EAST LINE OF SECTION 36, TOWNSHIP 6 NORTH, RANGE 66 WEST OF THE 6TH P.M., WELD COUNTY, COLORADO.



0 1000  
 SCALE: 1"= 1000'  
 U.S. SURVEY FEET

FRANK A. KOHL  
 COLORADO PLS 37067

DATE OF SURVEY: 8/19/2010 (SECTION CONTROL)

DATE OF SURVEY: 3/5/2012 (WELL LOCATION)



**LAMP RYNEARSON**  
 & ASSOCIATES

4715 Innovation Drive 970.226.0342 | P  
 Fort Collins, CO 80525 970.226.0879 | F  
 www.LRA-Inc.com

Proposed Well Location Exhibit  
 CS-Bittersweet 3-1-13  
 1 of 4

drawn by  
 KJW

date  
 10/15/15

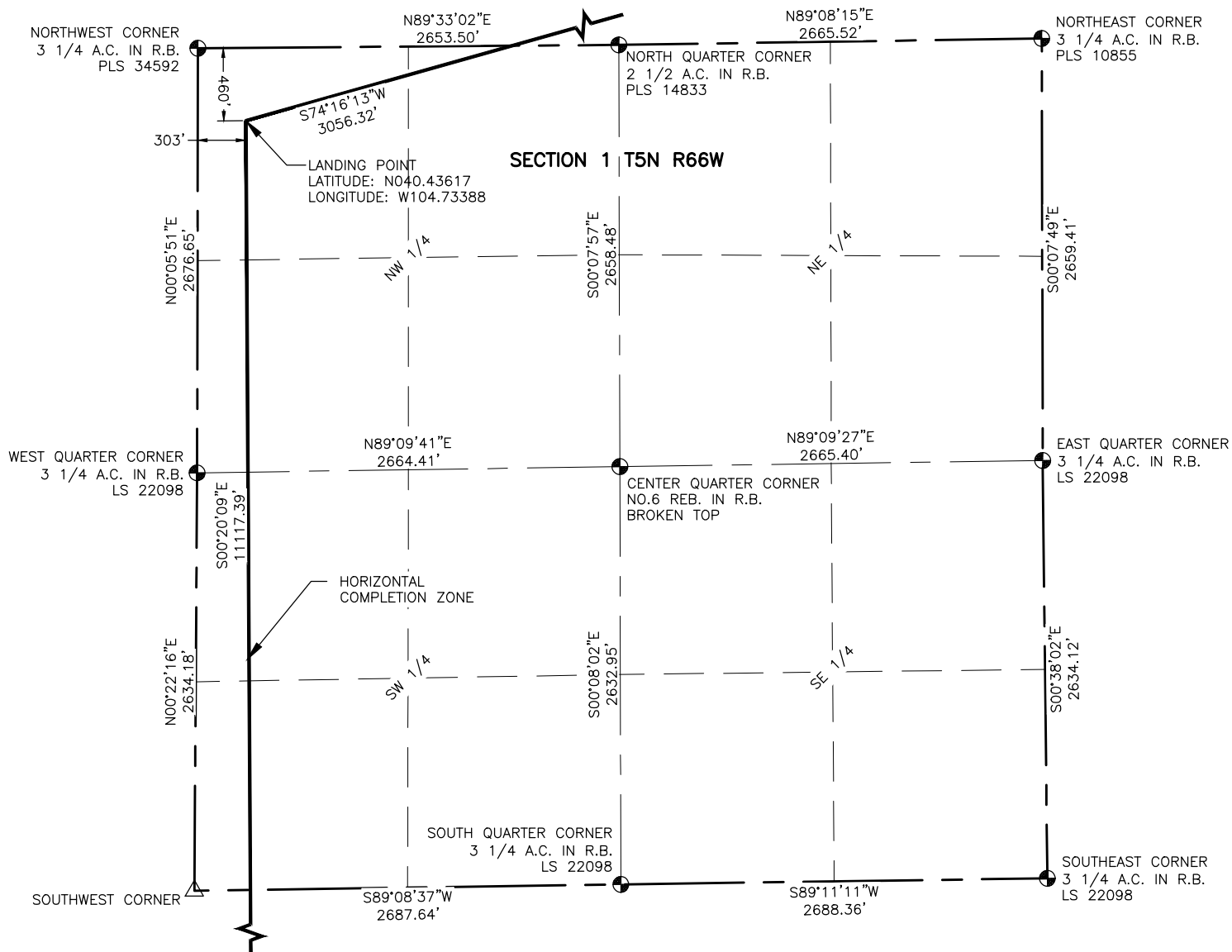
cogcc id  
 430474

project - task number  
 0210012.00-502

book and page  
 MR-01 5-6

surface - location  
 SW/4 SE/4 SEC 36 T6N R66W

path\filename P:\\_Engineering\0210012 MRI C Street\DRAWINGS\EXHIBITS\0210012EXWPD.dwg

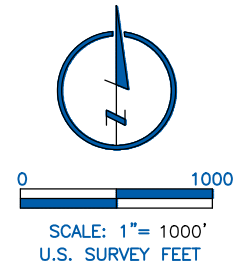


#### NOTES:

- DISTANCES ARE MEASURED PERPENDICULAR TO NEAREST SECTION LINE AND ARE SHOWN ON THE SAME SIDE OF THE SECTION LINE WHERE THE WELL IS LOCATED.
- THIS MAP DOES NOT REPRESENT A MONUMENTED BOUNDARY SURVEY. SIXTEENTH CORNER LOCATIONS ARE COMPUTED, UNLESS OTHERWISE NOTED.
- BOTTOM HOLE LOCATIONS AND HORIZONTAL COMPLETION ZONE PROVIDED BY OTHERS.

#### LEGEND

- ALIQUOT CORNER
- BOTTOM HOLE
- COMPUTED ALIQUOT CORNERS FROM MONUMENT ACCESSORIES
- PROPOSED WELL
- A.C. ALUMINUM CAP
- R.B. RANGE BOX



**LAMP RYNEARSON**  
& ASSOCIATES

4715 Innovation Drive 970.226.0342 | P  
Fort Collins, CO 80525 970.226.0879 | F  
www.LRA-Inc.com

Proposed Well Location Exhibit  
CS-Bittersweet 3-1-13  
2 of 4

drawn by  
KJW

date  
10/15/15

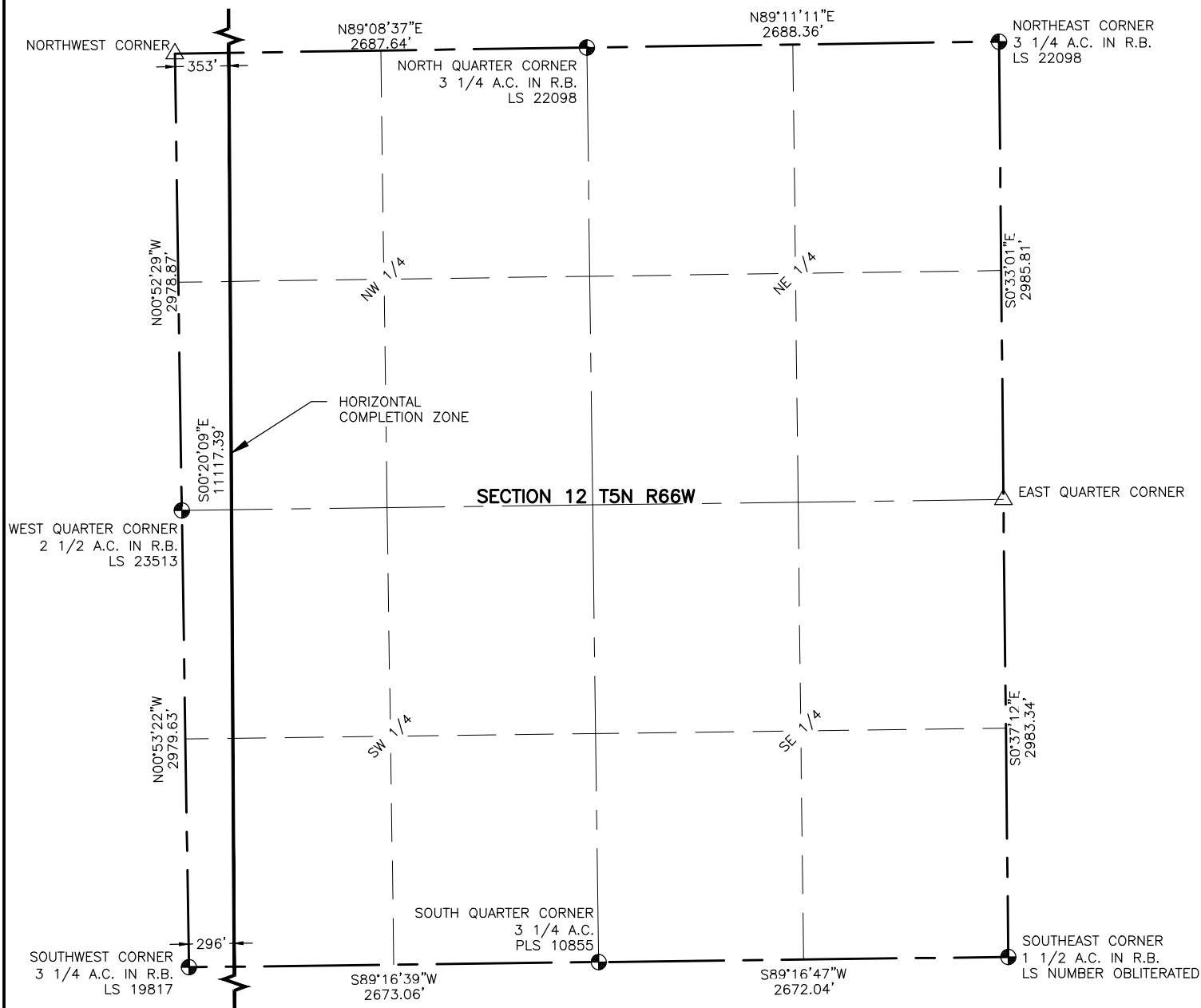
cogcc id  
430474

project - task number  
0210012.00-502

book and page  
MR-01 5-6

surface - location  
SW/4 SE/4 SEC 36 T6N R66W

path\filename P:\\_Engineering\0210012 MRI C Street\DRAWINGS\EXHIBITS\0210012EXWPDA.dwg

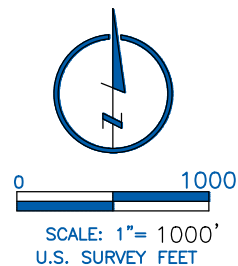


#### NOTES:

- DISTANCES ARE MEASURED PERPENDICULAR TO NEAREST SECTION LINE AND ARE SHOWN ON THE SAME SIDE OF THE SECTION LINE WHERE THE WELL IS LOCATED.
- THIS MAP DOES NOT REPRESENT A MONUMENTED BOUNDARY SURVEY. SIXTEENTH CORNER LOCATIONS ARE COMPUTED, UNLESS OTHERWISE NOTED.
- BOTTOM HOLE LOCATIONS AND HORIZONTAL COMPLETION ZONE PROVIDED BY OTHERS.

#### LEGEND

- ALIQUOT CORNER
- BOTTOM HOLE
- COMPUTED ALIQUOT CORNERS FROM MONUMENT ACCESSORIES
- PROPOSED WELL
- A.C. ALUMINUM CAP
- R.B. RANGE BOX



**LAMP RYNEARSON**  
& ASSOCIATES

4715 Innovation Drive 970.226.0342 | P  
Fort Collins, CO 80525 970.226.0879 | F  
www.LRA-Inc.com

Proposed Well Location Exhibit  
CS-Bittersweet 3-1-13  
3 of 4

drawn by

KJW

date

10/15/15

cogcc id

430474

project - task number

0210012.00-502

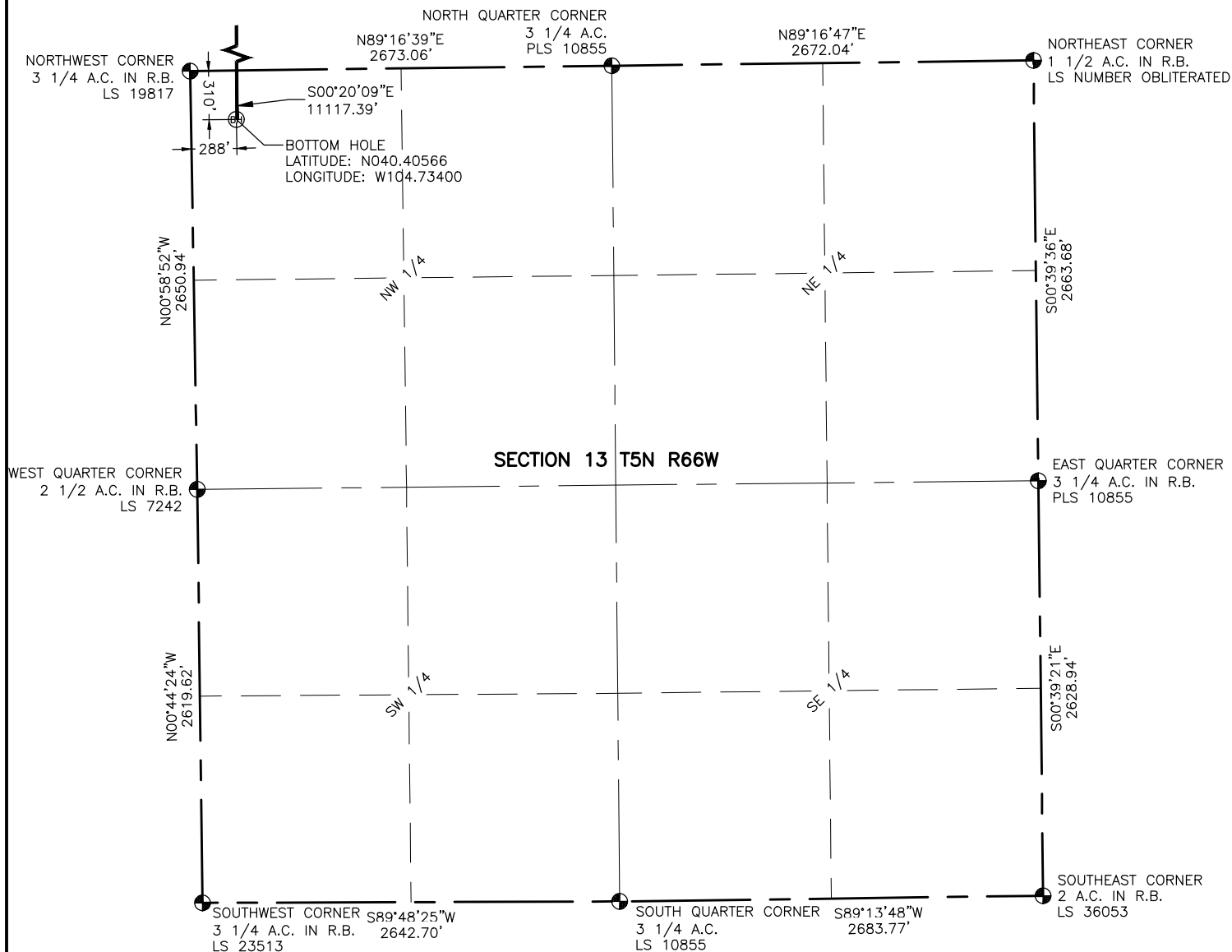
book and page

MR-01 5-6

surface - location

SW/4 SE/4 SEC 36 T6N R66W



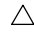

path\filename P:\\_Engineering\0210012 MRI C Street\DRAWINGS\EXHIBITS\0210012EXWPDB.dwg

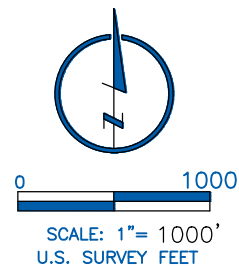


#### NOTES:

- DISTANCES ARE MEASURED PERPENDICULAR TO NEAREST SECTION LINE AND ARE SHOWN ON THE SAME SIDE OF THE SECTION LINE WHERE THE WELL IS LOCATED.
- THIS MAP DOES NOT REPRESENT A MONUMENTED BOUNDARY SURVEY. SIXTEENTH CORNER LOCATIONS ARE COMPUTED, UNLESS OTHERWISE NOTED.
- BOTTOM HOLE LOCATIONS AND HORIZONTAL COMPLETION ZONE PROVIDED BY OTHERS.

#### LEGEND

-  ALIQUOT CORNER
-  BOTTOM HOLE
-  COMPUTED ALIQUOT CORNERS FROM MONUMENT ACCESSORIES
-  PROPOSED WELL
- A.C. ALUMINUM CAP
- R.B. RANGE BOX



4715 Innovation Drive 970.226.0342 | P  
Fort Collins, CO 80525 970.226.0879 | F  
www.LRA-Inc.com

Proposed Well Location Exhibit  
CS-Bittersweet 3-1-13  
4 of 4

drawn by

KJW

date

10/15/15

cogcc id

430474

project - task number

0210012.00-502

book and page

MR-01 5-6

surface - location

SW/4 SE/4 SEC 36 T6N R66W

path\filename P:\\_Engineering\0210012 MRI C Street\DRAWINGS\EXHIBITS\0210012EXWPCD.dwg