

2011 Alum. Cap,
PLS #28285
Lat: 41.001983°
Long: 104.428828°

Re-Established
State Line
Monument (Not
Set on Ground)

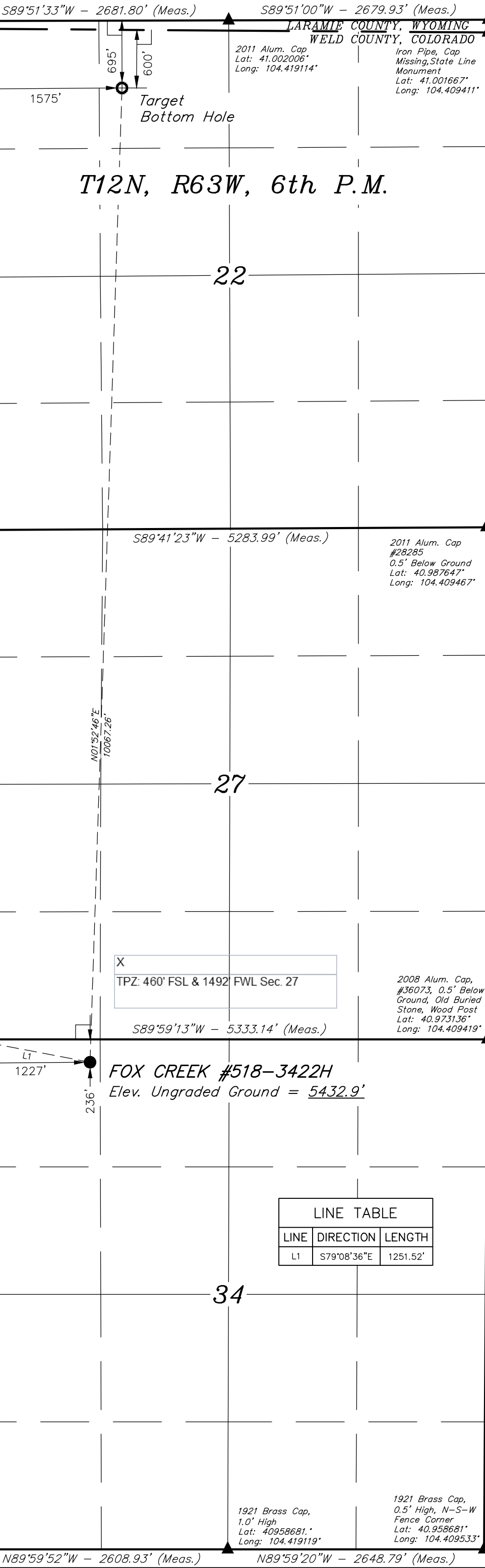
1/2" REBAR
Lat: 40.994722°
Long: 104.428747°

2009 Alum. Cap,
#17492
Lat: 40.987561°
Long: 104.428600°

Set Marked Stone,
N-S Fenceline
Lat: 40.980353°
Long: 104.428711°

2008 Alum. Cap,
#36073 1.0' High,
E-W-S Fence
Corner
Lat: 40.973125°
Long: 104.428728°

2009 Alum. Cap,
0.5' Below Ground
Fenceline
0.7' Below Road
Lat: 40.958681°
Long: 104.428558°



2011 Alum. Cap
#9954
Lat: 41.002028°
Long: 104.409408°

2011 Alum. Cap
Lat: 41.002006°
Long: 104.419114°

Iron Pipe, Cap
Missing, State Line
Monument
Lat: 41.001667°
Long: 104.409411°

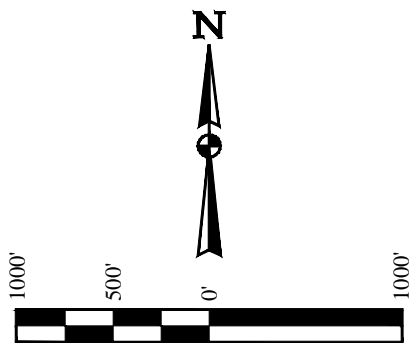
2011 Alum. Cap
#28285
0.5' Below Ground
Lat: 40.987647°
Long: 104.409467°

2008 Alum. Cap,
#36073, 0.5' Below
Ground, Old Buried
Stone, Wood Post
Lat: 40.973136°
Long: 104.409419°

1921 Brass Cap,
1.0' High
Lat: 40.958681°
Long: 104.419119°

1921 Brass Cap,
0.5' High, N-S-W
Fence Corner
Lat: 40.958681°
Long: 104.409533°

- LEGEND:**
- = 90° SYMBOL
 - = PROPOSED WELLHEAD.
 - = TARGET BOTTOM HOLE.
 - = SECTION CORNERS LOCATED.
 - = SECTION CORNERS RE-ESTABLISHED. (Not Set on Ground.)



PDOP = 1.8

BASIS OF BEARINGS
BASIS OF BEARINGS IS A G.P.S. OBSERVATION

BASIS OF ELEVATION
SPOT ELEVATION AT THE NORTHEAST CORNER OF SECTION 1, T11N, R63W, 6th P.M. TAKEN FROM THE HEREFORD, QUADRANGLE, COLORADO, WELD COUNTY, 7.5 MINUTE QUAD (TOPOGRAPHIC MAP) PUBLISHED BY THE UNITED STATES DEPARTMENT OF THE INTERIOR, GEOLOGICAL SURVEY. SAID ELEVATION IS MARKED AS BEING 5352 FEET.

| | |
|--------------------------------|------------------------------|
| NAD 83 (SURFACE LOCATION) | |
| LATITUDE | = 40°58'20.93" (40.972481) |
| LONGITUDE | = 104°25'27.40" (104.424278) |
| NAD 27 (SURFACE LOCATION) | |
| LATITUDE | = 40°58'20.99" (40.972497) |
| LONGITUDE | = 104°25'25.55" (104.423764) |
| STATE PLANE NAD 83 (CO. NORTH) | |
| N: 1598931.61 | E: 3297062.52 |
| STATE PLANE NAD 27 (CO. NORTH) | |
| N: 598929.22 | E: 2297212.04 |

| | |
|--------------------------------|------------------------------|
| NAD 83 (TARGET BOTTOM HOLE) | |
| LATITUDE | = 41°00'00.32" (41.000089) |
| LONGITUDE | = 104°25'23.17" (104.423103) |
| NAD 27 (TARGET BOTTOM HOLE) | |
| LATITUDE | = 41°00'00.38" (41.000106) |
| LONGITUDE | = 104°25'21.32" (104.422589) |
| STATE PLANE NAD 83 (CO. NORTH) | |
| N: 1608994.66 | E: 3297264.75 |
| STATE PLANE NAD 27 (CO. NORTH) | |
| N: 608992.08 | E: 2297414.33 |

CERTIFICATE

THIS IS TO CERTIFY THAT THE ABOVE PLAT WAS PREPARED FROM FIELD NOTES OF ACTUAL SURVEYS MADE BY ME OR UNDER MY SUPERVISION, AND THAT THE SAME ARE TRUE AND CORRECT TO THE BEST OF MY KNOWLEDGE AND BELIEF.

28285

REGISTERED LAND SURVEYOR
REGISTRATION NO. 28285
STATE OF COLORADO

EOG RESOURCES, INC.

FOX CREEK #518-3422H
NW 1/4 NW 1/4, SECTION 34, T12N, R63W, 6th P.M.
WELD COUNTY, COLORADO

UINTAH
ENGINEERING & LAND SURVEYING

UELS, LLC
Corporate Office * 85 South 200 East
Vernal, UT 84078 * (435) 789-1017

| | |
|--------------------------------|----------------------|
| SURVEYED BY: GREG WEIMER, C.J. | DATE: 04-27-15 |
| DRAWN BY: M.O.E. | DATE DRAWN: 04-29-15 |
| SCALE: 1" = 1000' | REVISED: 05-19-15 |

WELL LOCATION PLAT