

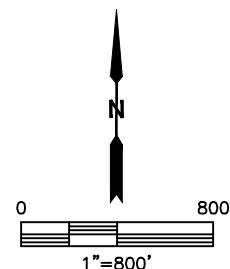
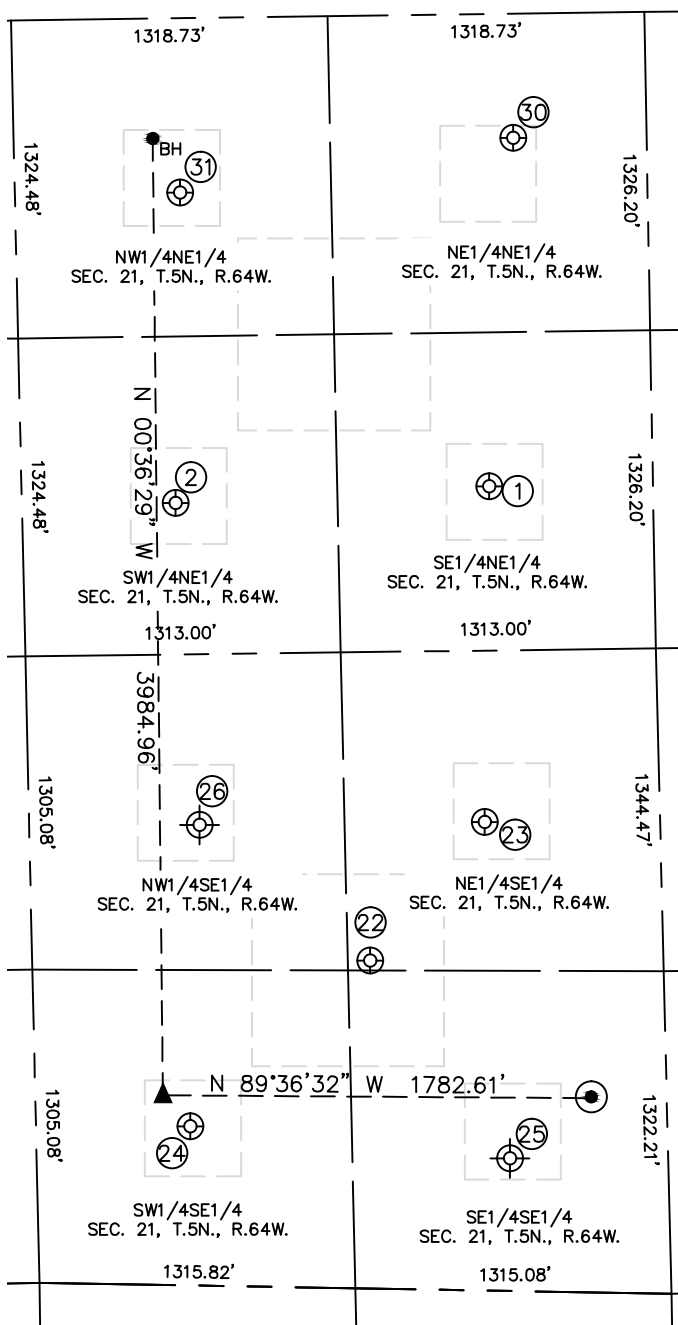


Lat40°, Inc. 6250 W. 10th Street, Unit 2, Greeley, CO 970-515-5294

SITE SKETCH

CHESNUT 21Y-214

SECTION: 21
TOWNSHIP: 5N
RANGE: 64W
6TH. P.M.
WELD COUNTY, CO



WELL NO.	WELL NAME	SHL FOOTAGE				SHL LAT°	SHL LONG°	PDOP	ELEV (FT.)	1/4/1/4
1	KOHLER 8-21	1969	FNL	683	FEL	40.38670	-104.54786	2.4	4609	SENE
2	KOHLER 7-21	2018	FNL	1993	FEL	40.38655	-104.55255	2.0	4611	SWNE
22	CHESNUT 5	1366	FSL	1221	FEL	40.38129	-104.54971	1.9	4634	NESE
23	CHESNUT 1	1956	FSL	730	FEL	40.38286	-104.54798	1.7	4621	NESE
24	CHESNUT 3	662	FSL	1985	FEL	40.37942	-104.55243	1.9	4629	SWSE
25	CHESNUT 2	550	FSL	660	FEL	40.37899	-104.54772	N/A	4636	SESE
26	CHESNUT 4	1915	FSL	1915	FEL	40.38278	-104.55222	N/A	4624	NWSE
30	KOHLER 1-21	518	FNL	555	FEL	40.39068	-104.54744	1.6	4604	NENE
31	PLATTE VALLEY 2-21	727	FNL	1947	FEL	40.39009	-104.55243	1.6	4608	NWNE

NOTE: THE ABANDONED WELL DATA SHOWN IN RED ABOVE WAS OBTAINED FROM COGCC SCOUT CARDS.

DATE: 11/10/2015
PROJECT#: 2014040