

PDC ENERGY

**WELD COUNTY, COLORADO
SE SE SEC. 21 T5N R64W 6th P.M.
CHESNUT 21X-304**

ORIGINAL WELLBORE

14 November, 2015

Plan: PROPOSAL #3





Project: WELD COUNTY, COLORADO
Site: SE SE SEC. 21 T5N R64W 6th P.M.
Well: CHESNUT 21X-304
Wellbore: ORIGINAL WELLBORE
Design: PROPOSAL #3

ANNOTATIONS									
TVD	MD	Inc	Azi	+N/-S	+E/-W	VSec	Dep	Annotation	
1500.0	1500.0	0.00	0.00	0.0	0.0	0.0	0.0	START NUDGE (2°/100ft BUR)	
2479.8	2500.0	20.00	245.00	-73.0	-156.6	-25.6	172.8	EOB TO 20° INC	
2949.7	3000.0	20.00	245.00	-145.3	-311.6	-51.0	343.8	END OF TANGENT	
3090.5	3150.5	21.26	237.23	-170.9	-357.8	-62.5	396.8	EOB & T TO 21.26° INC & 237.23° AZ	
3190.5	3258.6	23.42	237.23	-193.2	-392.4	-74.0	437.8	EOB TO 23.42° INC	
4864.8	5083.2	23.42	237.23	-585.7	-1002.2	-277.6	1163.0	END OF TANGENT	
6003.4	6254.1	0.00	237.23	-713.4	-1200.6	-343.8	1399.0	EOD TO VERTICAL	
6033.4	6284.1	0.00	0.00	-713.4	-1200.6	-343.8	1399.0	KOP (8°/100ft BUR)	
6749.5	7418.2	90.73	0.00	11.9	-1200.6	351.7	2124.3	7" ICP - CHESNUT 21X-304 (P3)	
6697.5	11468.8	90.74	0.00	4062.1	-1200.6	4235.8	6174.5	BHL - CHESNUT 21X-304 (P3)	

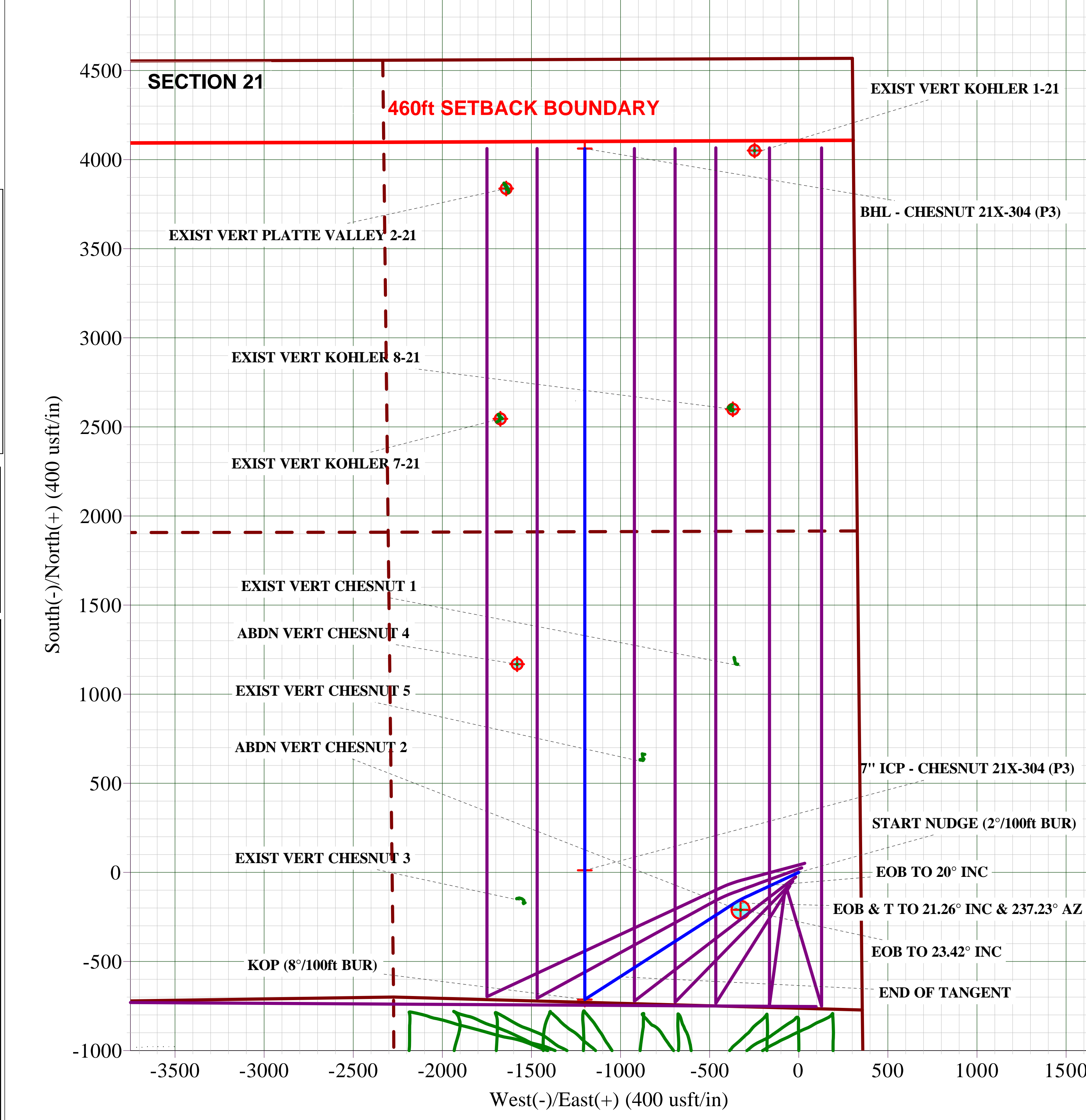
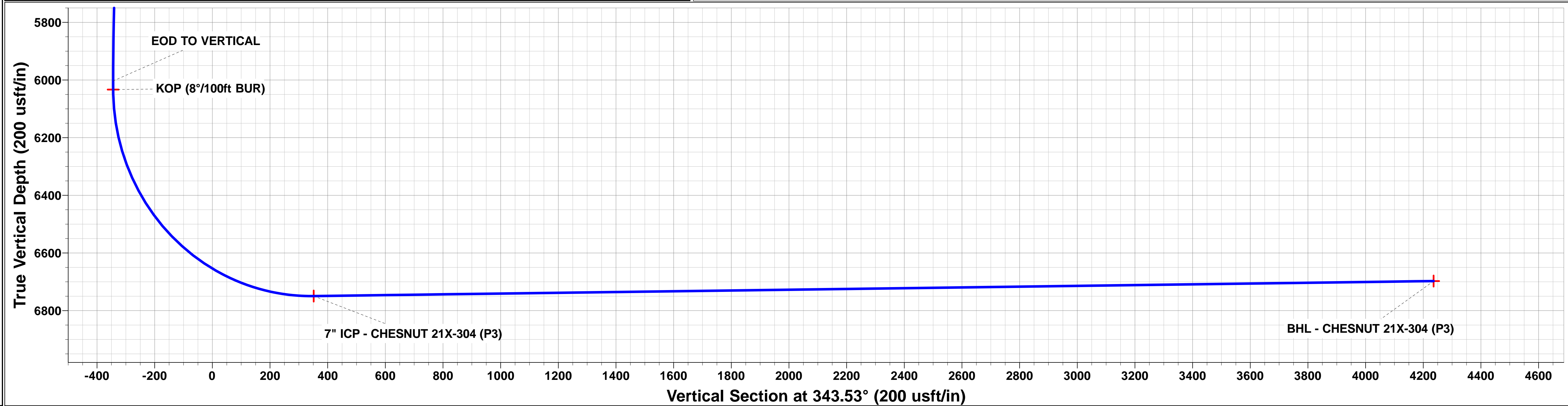
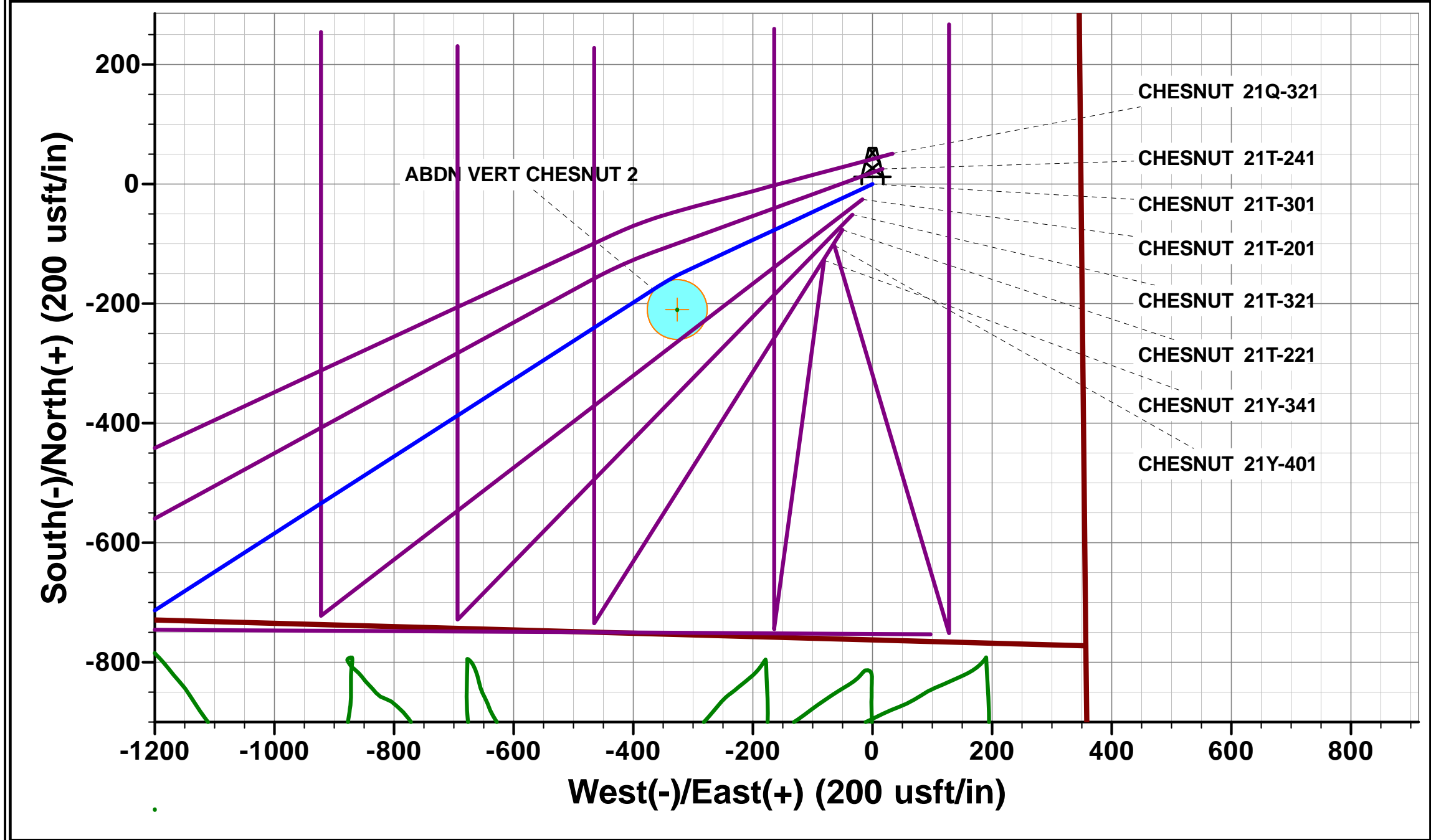
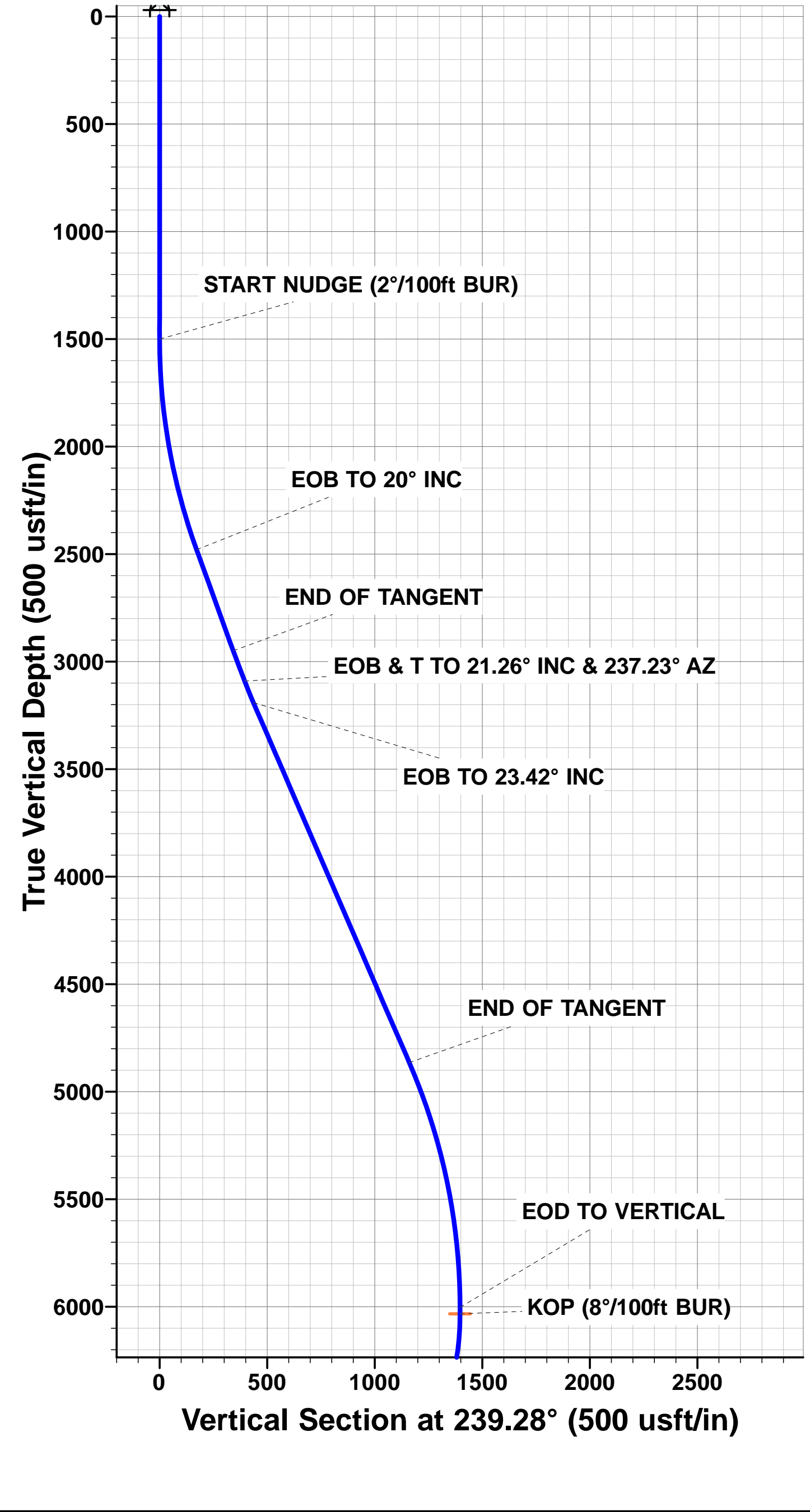
PROPOSED LOCAL COORDINATES:

SHL: 762ft FSL & 348t FEL Sec 21

7" ICP: 773.9ft FSL & 1548.6ft FEL Sec 21

BHL: 500ft FNL & 1506ft FEL Sec 21

WELLBORE TARGET DETAILS (LAT/LONG)					
Name	TVD	+N/-S	+E/-W	Latitude	Longitude
KOP - CHESNUT 21X-304 (P3)	6033.4	-713.4	-1200.6	40.377612	-104.550859
BHL - CHESNUT 21X-304 (P3)	6697.5	4062.1	-1200.6	40.390720	-104.550860
7" ICP - CHESNUT 21X-304 (P3)	6749.5	11.9	-1200.6	40.379603	-104.550859



Planning Report



Database:	EDM 5000.1 Single User Db	Local Co-ordinate Reference:	Well CHESNUT 21X-304
Company:	PDC ENERGY	TVD Reference:	kb-est @ 4651.5usft
Project:	WELD COUNTY, COLORADO	MD Reference:	kb-est @ 4651.5usft
Site:	SE SE SEC. 21 T5N R64W 6th P.M.	North Reference:	True
Well:	CHESNUT 21X-304	Survey Calculation Method:	Minimum Curvature
Wellbore:	ORIGINAL WELLBORE		
Design:	PROPOSAL #3		

Project	WELD COUNTY, COLORADO		
Map System:	US State Plane 1983	System Datum:	Mean Sea Level
Geo Datum:	North American Datum 1983		
Map Zone:	Colorado Northern Zone		Using geodetic scale factor

Site	SE SE SEC. 21 T5N R64W 6th P.M.		
Site Position:		Northing:	1,382,418.54 usft
From:	Map	Easting:	3,265,539.58 usft
Position Uncertainty:	0.0 usft	Slot Radius:	1.10000ft
		Latitude:	40.379223
		Longitude:	-104.546846
		Grid Convergence:	0.62 °

Well	CHESNUT 21X-304		
Well Position	+N/-S	126.4 usft	Northing:
	+E/-W	82.4 usft	Easting:
Position Uncertainty		0.0 usft	Wellhead Elevation:
			Latitude:
			Longitude:
			Ground Level:

Wellbore	ORIGINAL WELLBORE				
Magnetics	Model Name	Sample Date	Declination (°)	Dip Angle (°)	Field Strength (nT)
	IGRF2015	31/08/2015	8.28	66.92	52,611

Design	PROPOSAL #3			
Audit Notes:				
Version:	Phase:	PROTOTYPE	Tie On Depth:	0.0
Vertical Section:	Depth From (TVD) (usft)	+N/-S (usft)	+E/-W (usft)	Direction (°)
	0.0	0.0	0.0	343.53

Plan Sections											
MD (usft)	Inc (°)	Azi (°)	Vertical Depth	SS (usft)	+N/-S (usft)	+E/-W (usft)	Dogleg Rate (°/100usf)	Build Rate (°/100usf)	Turn Rate (°/100usf)	TFO (°)	Target
0.0	0.00	0.00	0.0	-4,651.5	0.0	0.0	0.00	0.00	0.00	0.00	
1,500.0	0.00	0.00	1,500.0	-3,151.5	0.0	0.0	0.00	0.00	0.00	0.00	
2,500.0	20.00	245.00	2,479.8	-2,171.7	-73.0	-156.6	2.00	2.00	0.00	245.00	
3,000.0	20.00	245.00	2,949.7	-1,701.8	-145.3	-311.6	0.00	0.00	0.00	0.00	
3,150.5	21.26	237.23	3,090.5	-1,561.0	-170.9	-357.8	2.00	0.84	-5.16	-69.00	
3,258.5	23.42	237.23	3,190.5	-1,461.0	-193.2	-392.4	2.00	2.00	0.00	0.00	
5,083.2	23.42	237.23	4,864.8	213.3	-585.7	-1,002.2	0.00	0.00	0.00	0.00	
6,254.1	0.00	0.00	6,003.4	1,351.9	-713.4	-1,200.6	2.00	-2.00	0.00	180.00	
6,284.1	0.00	0.00	6,033.4	1,381.9	-713.4	-1,200.6	0.00	0.00	0.00	0.00	KOP - CHESNUT 2
7,418.2	90.73	0.00	6,749.5	2,098.0	11.9	-1,200.6	8.00	8.00	0.00	0.00	
11,468.8	90.74	0.00	6,697.5	2,046.0	4,062.1	-1,200.6	0.00	0.00	0.00	0.96	BHL - CHESNUT 2

Planning Report



Database:	EDM 5000.1 Single User Db	Local Co-ordinate Reference:	Well CHESNUT 21X-304
Company:	PDC ENERGY	TVD Reference:	kb-est @ 4651.5usft
Project:	WELD COUNTY, COLORADO	MD Reference:	kb-est @ 4651.5usft
Site:	SE SE SEC. 21 T5N R64W 6th P.M.	North Reference:	True
Well:	CHESNUT 21X-304	Survey Calculation Method:	Minimum Curvature
Wellbore:	ORIGINAL WELLBORE		
Design:	PROPOSAL #3		

Planned Survey

MD (usft)	Inc (°)	Azi (°)	TVD (usft)	SS (usft)	+N/-S (usft)	+E/-W (usft)	Vertical Section (usft)	Dogleg Rate (°/100usft)	Build Rate (°/100usft)	Turn Rate (°/100usft)
0.0	0.00	0.00	0.0	4,651.50	0.0	0.0	0.0	0.00	0.00	0.00
100.0	0.00	0.00	100.0	4,551.50	0.0	0.0	0.0	0.00	0.00	0.00
200.0	0.00	0.00	200.0	4,451.50	0.0	0.0	0.0	0.00	0.00	0.00
300.0	0.00	0.00	300.0	4,351.50	0.0	0.0	0.0	0.00	0.00	0.00
400.0	0.00	0.00	400.0	4,251.50	0.0	0.0	0.0	0.00	0.00	0.00
500.0	0.00	0.00	500.0	4,151.50	0.0	0.0	0.0	0.00	0.00	0.00
600.0	0.00	0.00	600.0	4,051.50	0.0	0.0	0.0	0.00	0.00	0.00
700.0	0.00	0.00	700.0	3,951.50	0.0	0.0	0.0	0.00	0.00	0.00
800.0	0.00	0.00	800.0	3,851.50	0.0	0.0	0.0	0.00	0.00	0.00
900.0	0.00	0.00	900.0	3,751.50	0.0	0.0	0.0	0.00	0.00	0.00
1,000.0	0.00	0.00	1,000.0	3,651.50	0.0	0.0	0.0	0.00	0.00	0.00
1,100.0	0.00	0.00	1,100.0	3,551.50	0.0	0.0	0.0	0.00	0.00	0.00
1,200.0	0.00	0.00	1,200.0	3,451.50	0.0	0.0	0.0	0.00	0.00	0.00
1,300.0	0.00	0.00	1,300.0	3,351.50	0.0	0.0	0.0	0.00	0.00	0.00
1,400.0	0.00	0.00	1,400.0	3,251.50	0.0	0.0	0.0	0.00	0.00	0.00
START NUDGE (2°/100ft BUR)										
1,500.0	0.00	0.00	1,500.0	3,151.50	0.0	0.0	0.0	0.00	0.00	0.00
1,600.0	2.00	245.00	1,600.0	3,051.52	-0.7	-1.6	-0.3	2.00	2.00	0.00
1,700.0	4.00	245.00	1,699.8	2,951.66	-2.9	-6.3	-1.0	2.00	2.00	0.00
1,800.0	6.00	245.00	1,799.5	2,852.05	-6.6	-14.2	-2.3	2.00	2.00	0.00
1,900.0	8.00	245.00	1,898.7	2,752.80	-11.8	-25.3	-4.1	2.00	2.00	0.00
2,000.0	10.00	245.00	1,997.5	2,654.03	-18.4	-39.4	-6.5	2.00	2.00	0.00
2,100.0	12.00	245.00	2,095.6	2,555.88	-26.5	-56.7	-9.3	2.00	2.00	0.00
2,200.0	14.00	245.00	2,193.1	2,458.44	-36.0	-77.1	-12.6	2.00	2.00	0.00
2,300.0	16.00	245.00	2,289.6	2,361.86	-46.9	-100.6	-16.5	2.00	2.00	0.00
2,400.0	18.00	245.00	2,385.3	2,266.23	-59.3	-127.1	-20.8	2.00	2.00	0.00
EOB TO 20° INC										
2,500.0	20.00	245.00	2,479.8	2,171.68	-73.0	-156.6	-25.6	2.00	2.00	0.00
2,600.0	20.00	245.00	2,573.8	2,077.72	-87.5	-187.6	-30.7	0.00	0.00	0.00
2,700.0	20.00	245.00	2,667.8	1,983.75	-101.9	-218.6	-35.8	0.00	0.00	0.00
2,800.0	20.00	245.00	2,761.7	1,889.78	-116.4	-249.6	-40.9	0.00	0.00	0.00
2,900.0	20.00	245.00	2,855.7	1,795.81	-130.8	-280.6	-45.9	0.00	0.00	0.00
END OF TANGENT										
3,000.0	20.00	245.00	2,949.7	1,701.84	-145.3	-311.6	-51.0	0.00	0.00	0.00
3,100.0	20.80	239.73	3,043.4	1,608.10	-161.5	-342.4	-57.8	2.00	0.80	-5.27
EOB & T TO 21.26° INC & 237.23° AZ										
3,150.5	21.26	237.23	3,090.5	1,560.96	-170.9	-357.8	-62.5	2.00	0.91	-4.96
3,200.0	22.25	237.23	3,136.5	1,514.99	-180.9	-373.3	-67.7	2.00	2.00	0.00
3,258.5	23.42	237.23	3,190.5	1,461.03	-193.2	-392.4	-74.0	2.00	2.00	0.00
EOB TO 23.42° INC										
3,258.6	23.42	237.23	3,190.5	1,460.98	-193.2	-392.4	-74.0	0.00	0.00	0.00
3,300.0	23.42	237.23	3,228.5	1,422.99	-202.1	-406.2	-78.7	0.00	0.00	0.00
3,400.0	23.42	237.23	3,320.3	1,331.23	-223.6	-439.6	-89.8	0.00	0.00	0.00
3,500.0	23.42	237.23	3,412.0	1,239.47	-245.1	-473.1	-101.0	0.00	0.00	0.00
3,600.0	23.42	237.23	3,503.8	1,147.71	-266.6	-506.5	-112.1	0.00	0.00	0.00
3,700.0	23.42	237.23	3,595.6	1,055.94	-288.1	-539.9	-123.3	0.00	0.00	0.00
3,800.0	23.42	237.23	3,687.3	964.18	-309.6	-573.3	-134.4	0.00	0.00	0.00
3,900.0	23.42	237.23	3,779.1	872.42	-331.1	-606.7	-145.6	0.00	0.00	0.00
4,000.0	23.42	237.23	3,870.8	780.66	-352.7	-640.2	-156.7	0.00	0.00	0.00
4,100.0	23.42	237.23	3,962.6	688.89	-374.2	-673.6	-167.9	0.00	0.00	0.00
4,200.0	23.42	237.23	4,054.4	597.13	-395.7	-707.0	-179.1	0.00	0.00	0.00
4,300.0	23.42	237.23	4,146.1	505.37	-417.2	-740.4	-190.2	0.00	0.00	0.00
4,400.0	23.42	237.23	4,237.9	413.61	-438.7	-773.8	-201.4	0.00	0.00	0.00
4,500.0	23.42	237.23	4,329.7	321.84	-460.2	-807.3	-212.5	0.00	0.00	0.00

Planning Report



Database:	EDM 5000.1 Single User Db	Local Co-ordinate Reference:	Well CHESNUT 21X-304
Company:	PDC ENERGY	TVD Reference:	kb-est @ 4651.5usft
Project:	WELD COUNTY, COLORADO	MD Reference:	kb-est @ 4651.5usft
Site:	SE SE SEC. 21 T5N R64W 6th P.M.	North Reference:	True
Well:	CHESNUT 21X-304	Survey Calculation Method:	Minimum Curvature
Wellbore:	ORIGINAL WELLBORE		
Design:	PROPOSAL #3		

Planned Survey

MD (usft)	Inc (°)	Azi (°)	TVD (usft)	SS (usft)	+N/-S (usft)	+E/-W (usft)	Vertical Section (usft)	Dogleg Rate (°/100usft)	Build Rate (°/100usft)	Turn Rate (°/100usft)
4,600.0	23.42	237.23	4,421.4	230.08	-481.7	-840.7	-223.7	0.00	0.00	0.00
4,700.0	23.42	237.23	4,513.2	138.32	-503.2	-874.1	-234.8	0.00	0.00	0.00
4,800.0	23.42	237.23	4,604.9	46.56	-524.8	-907.5	-246.0	0.00	0.00	0.00
4,900.0	23.42	237.23	4,696.7	-45.21	-546.3	-940.9	-257.2	0.00	0.00	0.00
5,000.0	23.42	237.23	4,788.5	-136.97	-567.8	-974.4	-268.3	0.00	0.00	0.00
END OF TANGENT										
5,083.2	23.42	237.23	4,864.8	-213.32	-585.7	-1,002.2	-277.6	0.00	0.00	0.00
5,100.0	23.08	237.23	4,880.3	-228.75	-589.3	-1,007.7	-279.5	2.00	-2.00	0.00
5,200.0	21.08	237.23	4,972.9	-321.41	-609.6	-1,039.4	-290.0	2.00	-2.00	0.00
5,300.0	19.08	237.23	5,066.8	-415.33	-628.2	-1,068.2	-299.7	2.00	-2.00	0.00
5,400.0	17.08	237.23	5,161.9	-510.38	-645.0	-1,094.3	-308.4	2.00	-2.00	0.00
5,500.0	15.08	237.23	5,258.0	-606.46	-660.0	-1,117.6	-316.1	2.00	-2.00	0.00
5,600.0	13.08	237.23	5,355.0	-703.45	-673.2	-1,138.1	-323.0	2.00	-2.00	0.00
5,700.0	11.08	237.23	5,452.7	-801.23	-684.5	-1,155.7	-328.8	2.00	-2.00	0.00
5,800.0	9.08	237.23	5,551.2	-899.69	-694.0	-1,170.4	-333.8	2.00	-2.00	0.00
5,900.0	7.08	237.23	5,650.2	-998.69	-701.6	-1,182.2	-337.7	2.00	-2.00	0.00
6,000.0	5.08	237.23	5,749.6	-1,098.12	-707.3	-1,191.1	-340.7	2.00	-2.00	0.00
6,100.0	3.08	237.23	5,849.4	-1,197.86	-711.2	-1,197.1	-342.7	2.00	-2.00	0.00
6,200.0	1.08	237.23	5,949.3	-1,297.79	-713.1	-1,200.2	-343.7	2.00	-2.00	0.00
EOD TO VERTICAL										
6,254.1	0.00	237.23	6,003.4	-1,351.89	-713.4	-1,200.6	-343.8	2.00	-2.00	0.00
KOP (8°/100ft BUR)										
6,284.1	0.00	0.00	6,033.4	-1,381.89	-713.4	-1,200.6	-343.8	0.00	0.00	0.00
6,300.0	1.27	0.00	6,049.3	-1,397.78	-713.2	-1,200.6	-343.7	7.99	7.99	0.00
6,400.0	9.27	0.00	6,148.8	-1,497.28	-704.0	-1,200.6	-334.9	8.00	8.00	0.00
6,500.0	17.27	0.00	6,246.0	-1,594.53	-681.1	-1,200.6	-312.9	8.00	8.00	0.00
6,600.0	25.27	0.00	6,339.1	-1,687.64	-644.9	-1,200.6	-278.1	8.00	8.00	0.00
6,700.0	33.27	0.00	6,426.3	-1,774.80	-596.0	-1,200.6	-231.3	8.00	8.00	0.00
6,800.0	41.27	0.00	6,505.8	-1,854.32	-535.5	-1,200.6	-173.2	8.00	8.00	0.00
6,900.0	49.27	0.00	6,576.1	-1,924.64	-464.5	-1,200.6	-105.2	8.00	8.00	0.00
7,000.0	57.27	0.00	6,635.9	-1,984.39	-384.4	-1,200.6	-28.4	8.00	8.00	0.00
7,100.0	65.27	0.00	6,683.9	-2,032.42	-296.8	-1,200.6	55.7	8.00	8.00	0.00
7,200.0	73.27	0.00	6,719.3	-2,067.79	-203.4	-1,200.6	145.3	8.00	8.00	0.00
7,300.0	81.27	0.00	6,741.3	-2,089.80	-105.9	-1,200.6	238.7	8.00	8.00	0.00
7,400.0	89.27	0.00	6,749.5	-2,098.04	-6.3	-1,200.6	334.2	8.00	8.00	0.00
7" ICP - CHESNUT 21X-304 (P3)										
7,418.2	90.73	0.00	6,749.5	-2,098.04	11.9	-1,200.6	351.7	8.00	8.00	0.00
7,500.0	90.73	0.00	6,748.5	-2,097.00	93.7	-1,200.6	430.1	0.00	0.00	0.00
7,600.0	90.73	0.00	6,747.2	-2,095.72	193.7	-1,200.6	526.0	0.00	0.00	0.00
7,700.0	90.73	0.00	6,745.9	-2,094.45	293.7	-1,200.6	621.9	0.00	0.00	0.00
7,800.0	90.73	0.00	6,744.7	-2,093.17	393.7	-1,200.6	717.8	0.00	0.00	0.00
7,900.0	90.73	0.00	6,743.4	-2,091.90	493.6	-1,200.6	813.7	0.00	0.00	0.00
8,000.0	90.73	0.00	6,742.1	-2,090.62	593.6	-1,200.6	909.6	0.00	0.00	0.00
8,100.0	90.73	0.00	6,740.8	-2,089.34	693.6	-1,200.6	1,005.5	0.00	0.00	0.00
8,200.0	90.73	0.00	6,739.6	-2,088.06	793.6	-1,200.6	1,101.4	0.00	0.00	0.00
8,300.0	90.73	0.00	6,738.3	-2,086.78	893.6	-1,200.6	1,197.3	0.00	0.00	0.00
8,400.0	90.73	0.00	6,737.0	-2,085.51	993.6	-1,200.6	1,293.2	0.00	0.00	0.00
8,500.0	90.73	0.00	6,735.7	-2,084.23	1,093.6	-1,200.6	1,389.0	0.00	0.00	0.00
8,600.0	90.73	0.00	6,734.4	-2,082.95	1,193.6	-1,200.6	1,484.9	0.00	0.00	0.00
8,700.0	90.73	0.00	6,733.2	-2,081.67	1,293.6	-1,200.6	1,580.8	0.00	0.00	0.00
8,800.0	90.73	0.00	6,731.9	-2,080.38	1,393.6	-1,200.6	1,676.7	0.00	0.00	0.00
8,900.0	90.73	0.00	6,730.6	-2,079.10	1,493.6	-1,200.6	1,772.6	0.00	0.00	0.00
9,000.0	90.73	0.00	6,729.3	-2,077.82	1,593.6	-1,200.6	1,868.5	0.00	0.00	0.00

Planning Report



Database:	EDM 5000.1 Single User Db	Local Co-ordinate Reference:	Well CHESNUT 21X-304
Company:	PDC ENERGY	TVD Reference:	kb-est @ 4651.5usft
Project:	WELD COUNTY, COLORADO	MD Reference:	kb-est @ 4651.5usft
Site:	SE SE SEC. 21 T5N R64W 6th P.M.	North Reference:	True
Well:	CHESNUT 21X-304	Survey Calculation Method:	Minimum Curvature
Wellbore:	ORIGINAL WELLBORE		
Design:	PROPOSAL #3		

Planned Survey										
MD (usft)	Inc (°)	Azi (°)	TVD (usft)	SS (usft)	+N/-S (usft)	+E/-W (usft)	Vertical Section (usft)	Dogleg Rate (°/100usft)	Build Rate (°/100usft)	Turn Rate (°/100usft)
9,100.0	90.74	0.00	6,728.0	-2,076.54	1,693.5	-1,200.6	1,964.4	0.00	0.00	0.00
9,200.0	90.74	0.00	6,726.8	-2,075.25	1,793.5	-1,200.6	2,060.3	0.00	0.00	0.00
9,300.0	90.74	0.00	6,725.5	-2,073.97	1,893.5	-1,200.6	2,156.2	0.00	0.00	0.00
9,400.0	90.74	0.00	6,724.2	-2,072.69	1,993.5	-1,200.6	2,252.1	0.00	0.00	0.00
9,500.0	90.74	0.00	6,722.9	-2,071.40	2,093.5	-1,200.6	2,348.0	0.00	0.00	0.00
9,600.0	90.74	0.00	6,721.6	-2,070.12	2,193.5	-1,200.6	2,443.8	0.00	0.00	0.00
9,700.0	90.74	0.00	6,720.3	-2,068.83	2,293.5	-1,200.6	2,539.7	0.00	0.00	0.00
9,800.0	90.74	0.00	6,719.0	-2,067.54	2,393.5	-1,200.6	2,635.6	0.00	0.00	0.00
9,900.0	90.74	0.00	6,717.8	-2,066.26	2,493.5	-1,200.6	2,731.5	0.00	0.00	0.00
10,000.0	90.74	0.00	6,716.5	-2,064.97	2,593.5	-1,200.6	2,827.4	0.00	0.00	0.00
10,100.0	90.74	0.00	6,715.2	-2,063.68	2,693.5	-1,200.6	2,923.3	0.00	0.00	0.00
10,200.0	90.74	0.00	6,713.9	-2,062.39	2,793.5	-1,200.6	3,019.2	0.00	0.00	0.00
10,300.0	90.74	0.00	6,712.6	-2,061.10	2,893.5	-1,200.6	3,115.1	0.00	0.00	0.00
10,400.0	90.74	0.00	6,711.3	-2,059.82	2,993.4	-1,200.6	3,211.0	0.00	0.00	0.00
10,500.0	90.74	0.00	6,710.0	-2,058.52	3,093.4	-1,200.6	3,306.9	0.00	0.00	0.00
10,600.0	90.74	0.00	6,708.7	-2,057.23	3,193.4	-1,200.6	3,402.8	0.00	0.00	0.00
10,700.0	90.74	0.00	6,707.4	-2,055.94	3,293.4	-1,200.6	3,498.7	0.00	0.00	0.00
10,800.0	90.74	0.00	6,706.2	-2,054.65	3,393.4	-1,200.6	3,594.5	0.00	0.00	0.00
10,900.0	90.74	0.00	6,704.9	-2,053.36	3,493.4	-1,200.6	3,690.4	0.00	0.00	0.00
11,000.0	90.74	0.00	6,703.6	-2,052.07	3,593.4	-1,200.6	3,786.3	0.00	0.00	0.00
11,100.0	90.74	0.00	6,702.3	-2,050.77	3,693.4	-1,200.6	3,882.2	0.00	0.00	0.00
11,200.0	90.74	0.00	6,701.0	-2,049.48	3,793.4	-1,200.6	3,978.1	0.00	0.00	0.00
11,300.0	90.74	0.00	6,699.7	-2,048.19	3,893.4	-1,200.6	4,074.0	0.00	0.00	0.00
11,400.0	90.74	0.00	6,698.4	-2,046.89	3,993.4	-1,200.6	4,169.9	0.00	0.00	0.00
BHL - CHESNUT 21X-304 (P3)										
11,468.8	90.74	0.00	6,697.5	-2,046.00	4,062.1	-1,200.6	4,235.8	0.00	0.00	0.00

Plan Annotations				
MD (usft)	TVD (usft)	Local Coordinates		Comment
		+N/-S (usft)	+E/-W (usft)	
1,500.0	1,500.0	0.0	0.0	START NUDGE (2°/100ft BUR)
2,500.0	2,479.8	-73.0	-156.6	EOB TO 20° INC
3,000.0	2,949.7	-145.3	-311.6	END OF TANGENT
3,150.5	3,090.5	-170.9	-357.8	EOB & T TO 21.26° INC & 237.23° AZ
3,258.6	3,190.5	-193.2	-392.4	EOB TO 23.42° INC
5,083.2	4,864.8	-585.7	-1,002.2	END OF TANGENT
6,254.1	6,003.4	-713.4	-1,200.6	EOD TO VERTICAL
6,284.1	6,033.4	-713.4	-1,200.6	KOP (8°/100ft BUR)
7,418.2	6,749.5	11.9	-1,200.6	7" ICP - CHESNUT 21X-304 (P3)
11,468.8	6,697.5	4,062.1	-1,200.6	BHL - CHESNUT 21X-304 (P3)